

EN

# FCC 230

liebherr.com

## LIEBHERR

Liebherr fixed cargo cranes



**Maximum lifting capacity**  
45 t (Container operation)  
30 t (Grab operation)

**Maximum outreach**  
29.5 m

# Technical data

## Working radius

Min. to max. radius	3.5 m - 29.5 m
---------------------	----------------

## Weight

Weight of crane	approx. 45 t
(without pedestal and lifting attachments)	

## Design conditions

<b>Maximum admissible</b>	
Ambient working temperature	-20°C to +45°C
Humidity maximum	93%
<b>Maximum wind speed</b>	
Working condition	20 m/sec
Parking condition	63 m/sec

## Simultaneous speed

2 motions	Full load and speed
3 motions	Slewing/luffing full load and speed, hoisting approx. 60% (after acceleration)

## Hoisting/lowering

Hoisting/lowering with empty hook	0 m/min - 33 m/min
Hoisting/lowering with 30t	0 m/min - 25 m/min
Hoisting/lowering with 40t	0 m/min - 19 m/min
Hoisting/lowering with 45t	0 m/min - 17 m/min

## Luffing

Luffing time (from 3.5 m - 29.5 m)	approx. 69 sec
------------------------------------	----------------

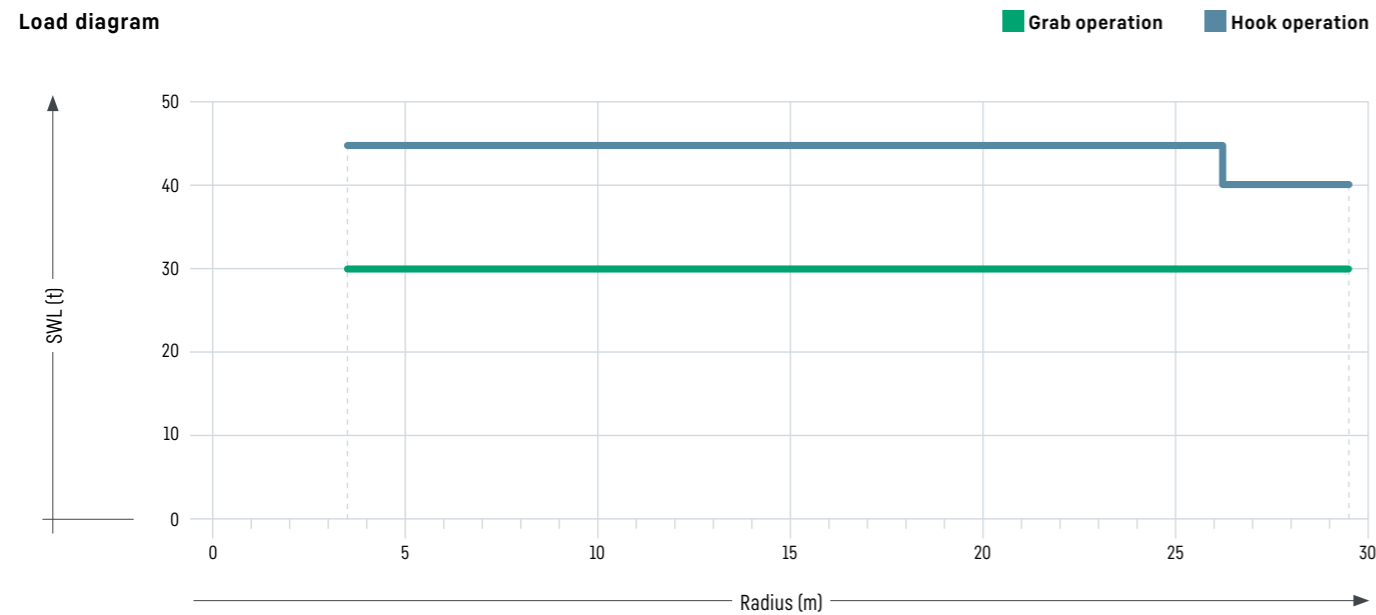
## Slewing

Slewing speed	0 rpm - 1.2 rpm
Slewing range	360° unlimited

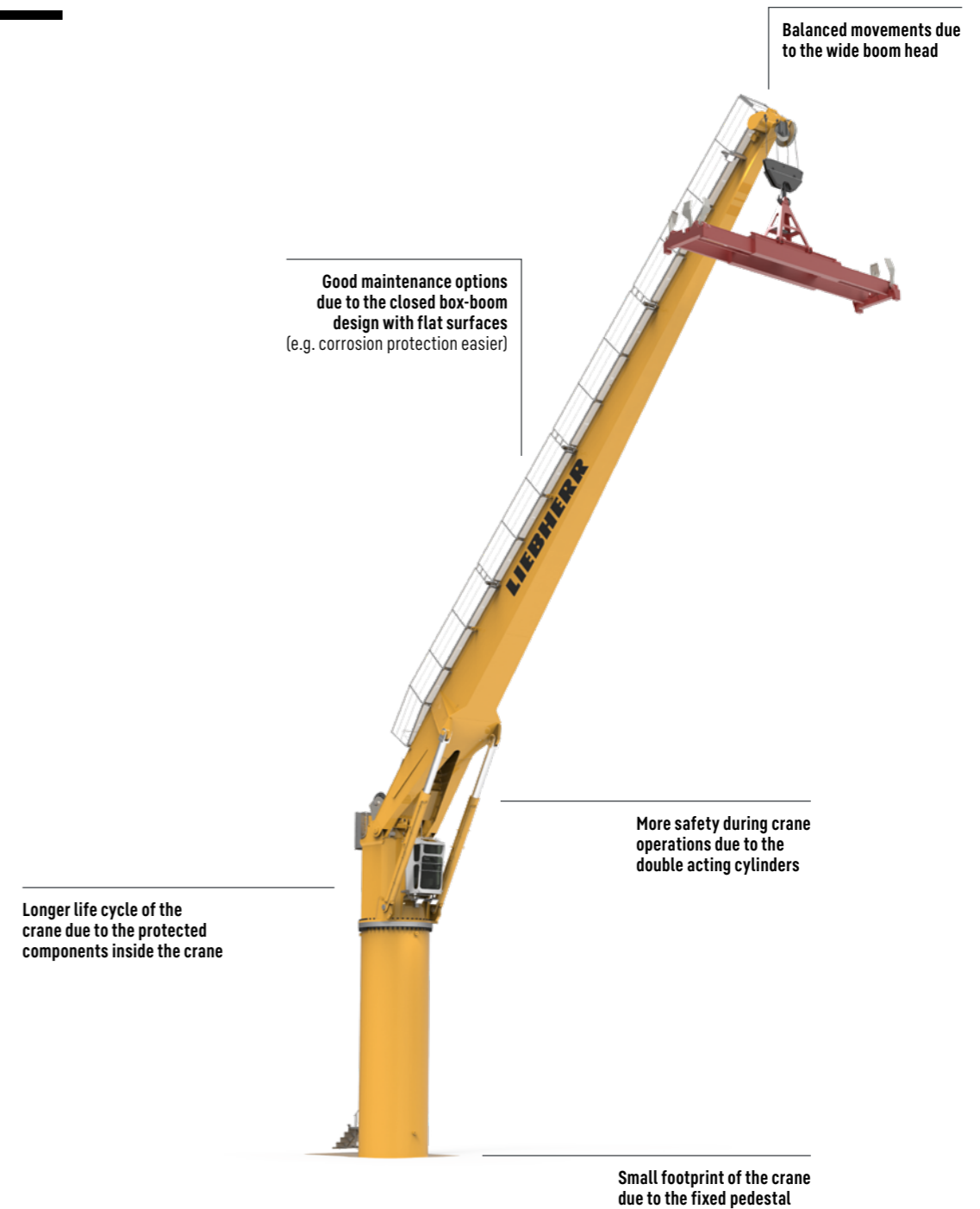
## Electric motor

Type of motor	three phase squirrel cage
Class of protection	IP 54/55
Class of insulation	F/B
Starting	star delta
Nominal output	S6-40% ED
Main power supply range	380 V - 440 V
Auxiliary power supply	230 V, 3 ph

## Load diagram



# General arrangement



# Advantages of Liebherr FCC 230

- Litronic system, designed and tested by Liebherr
- Energy-efficient hydraulic drive
- Components tested and proven for extreme conditions and performance
- Long life hydraulic luffing cylinders (chrome-nickel plated), for reduced maintenance
- Ready for future automation functions

# Optional features

- Comfort variant with large cabin and pleasant ascent option
- Heavy-lift application up to 60 t
- Designed in accordance with the highest European standards (directive 2006/42/EC)
- Automatic spreader and motor grab operation
- Additional platforms and boom walkways for service and maintenance purposes



## LiCAS:

Liebherr cranes can be equipped with the Liebherr Collision Alert System (LiCAS). This additional assistance system sets new levels in operational safety during heavy-duty cargo handling. LiCAS supports the crane driver by permanently detecting the distances between several cranes and warns of potential unsafe conditions.

## LiDAT smartApp:

With LiDAT smartApp, it's possible to analyse your crane (operating and performance) data and get answers from it almost immediately. That leads to direct decisions. The ability to work faster gives operators a competitive edge they didn't have before. The data analytics helps to detect bottle necks and to identify new opportunities.

## LiSIM®:

LiSIM for CBG series increases port safety and productivity by providing a cost-effective and highly efficient crane operator training solution. The development of this sophisticated training tool was prompted by Liebherr's extensive experience in crane operator training. Based on the original Litronic® crane control system, LiSIM® is the only realistic virtual solution available in the market for the training of the precise and innovative control system of Liebherr cranes.