

EN

LS 250

www.liebherr.com

LIEBHERR

Ship cranes



Maximum lifting capacity
Main hoist: 250 t
Auxiliary hoist: 45 t



Maximum outreach
36 m

Technical data

Speeds*

Hoisting/lowering	
250t	0 m/min - 4.4 m/min
0t	0 m/min - 12.8 m/min
Slewing	
Reduced torque	0 rpm - 0.6 rpm
Max. torque	0 rpm - 0.4 rpm
Slewing range	360° unlimited
Luffing time	
120t (from 4,6m - 36m)	approx. 200sec
0t (from 4,6m - 36m)	approx. 125sec
Auxiliary hoist	
45t	0 m/min - 20 m/min
0t	0 m/min - 40 m/min

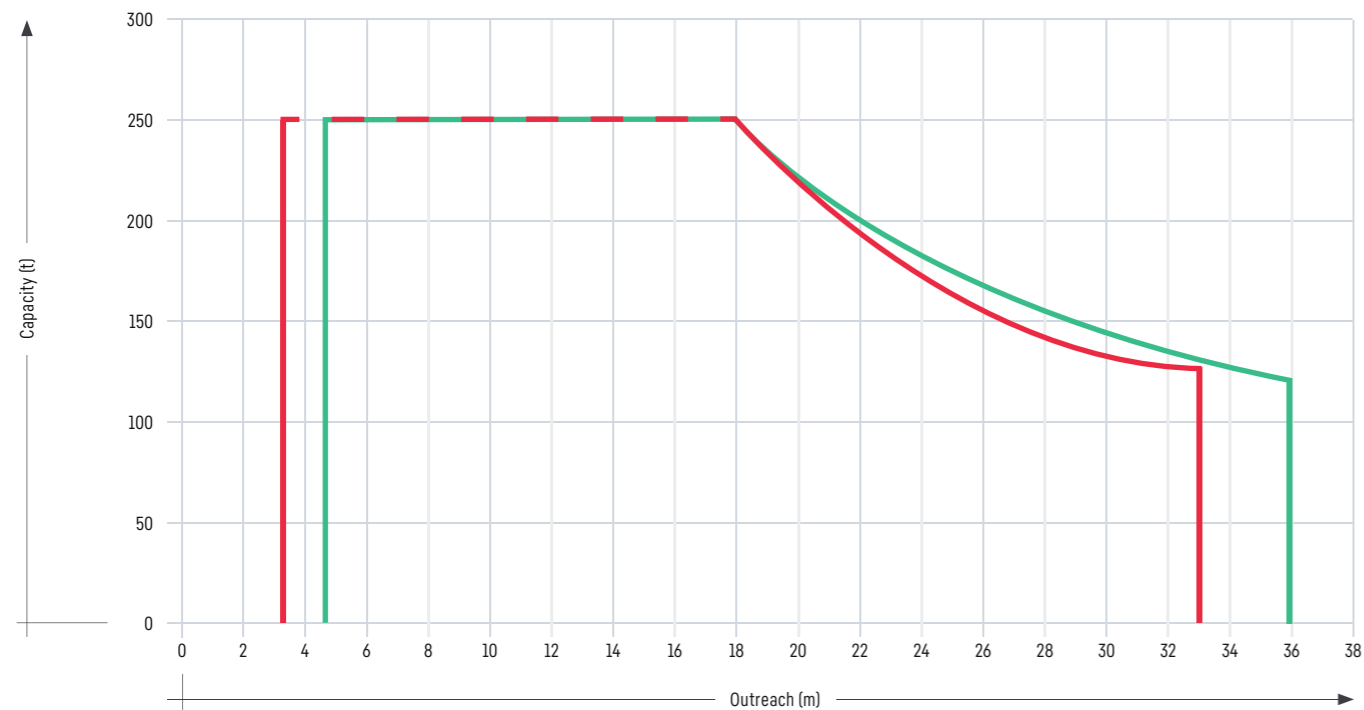
*Referring to 60 Hz

Design conditions

Maximum admissible	
Ambient working temperature	-20°C to +45°C
Humidity maximum	93%
Maximum wind speed	
Working condition	20 m/sec
Parking condition	63 m/sec

Load diagram

■ hook operation (33m) ■ hook operation (36m)**



**Load chart depending on operation conditions and classification societies

Working radius

Config. 1: min. to max. (radius)	3.8 m - 33 m
Config. 2: min. to max. (radius)	4.6 m - 36 m

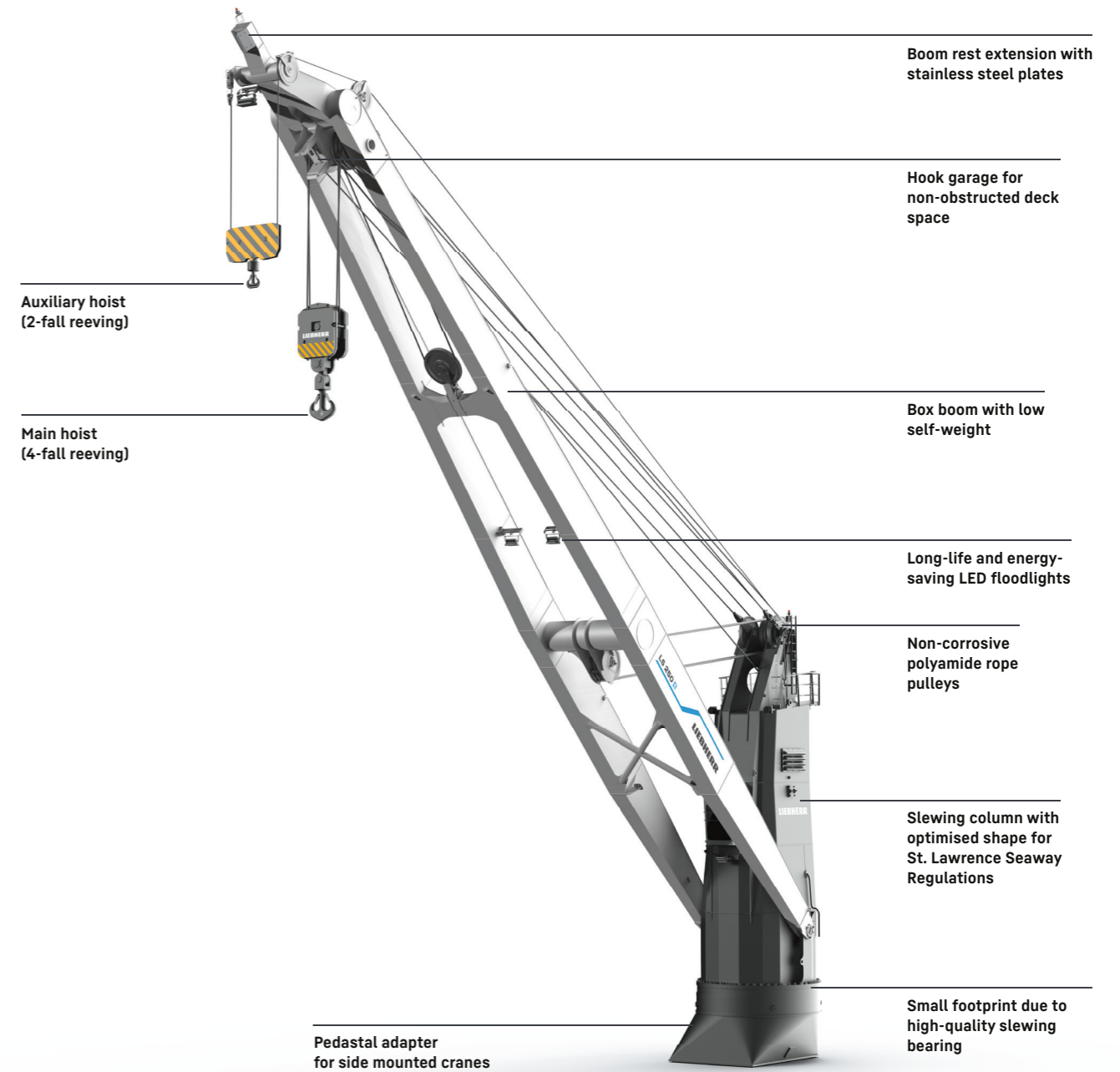
Electric data of the motor

Type of motor	three phase squirrel cage
Class of protection	IP 55
Starting	star delta
Nominal output	2x 140 kW (50 Hz) / 2x 180 kW (60 Hz) (S6 - 40% ED)
Main power supply	400 V (50 Hz) / 440 V (50 Hz)
Auxiliary power supply	230 V, 3 ph

Weight

Weight of crane (without pedestal and lifting attachments)	approx. 145 t
---	---------------

General arrangement



Advantages

- Components developed and produced in-house
- Precise and reliable crane control system Litronic - made by Liebherr
- Energy-efficient constant-pressure hydraulic drive
- Ready for the use of automated assistance systems
- Operator's cabin with A/C

Optional features



Liebherr
ship cranes

- 45t auxiliary hoist with load chart for grab operation and for personnel lift
- Intelligent automatic greasing systems for rope pulleys, slewing bearing and pivot point
- Remote control for precise control of the crane outside the cabin
- Additional monitor on the vessel bridge to get the overview of the crane parameters at all times
- Radio communication system
- Liebherr remote service



Litronic®

The crane management system is the centrepiece for precise and reliable crane operation. The in-house developed and manufactured Litronic is a unique one-system-solution which unites state-of-the-art technologies for advanced crane control. Litronic is the one-level interface between crane and driver. Various analysis tools provide relevant information on the operation. The system empowers the driver to efficiently control the crane and to optimize cargo operation. Litronic is an integrated solution, uniting motor and safety and diagnosis systems, communication and information systems as well as machine data recording. It offers a wide range of possibilities to modularly integrate functionalities and solutions as options during the ordering process upfront or as retrofit kits later on.

LiDAT

Remote maintenance via GSM-modem and LiDAT interface enables immediate troubleshooting by the crew and Liebherr technical advisors. This allows to put back the crane into operation without a separate service visit.

XpertAssist

The XpertAssist subscription offers an extension of the common remote maintenance service, including a direct audio/video uplink to Liebherr's special trained customer service, featuring augmented reality elements for enhanced diagnosis and advanced technical advice.