

# LHM 800

High rise version

[www.liebherr.com](http://www.liebherr.com)

# LIEBHERR

Mobile harbour crane

EN



Maximum lifting capacity  
154 t



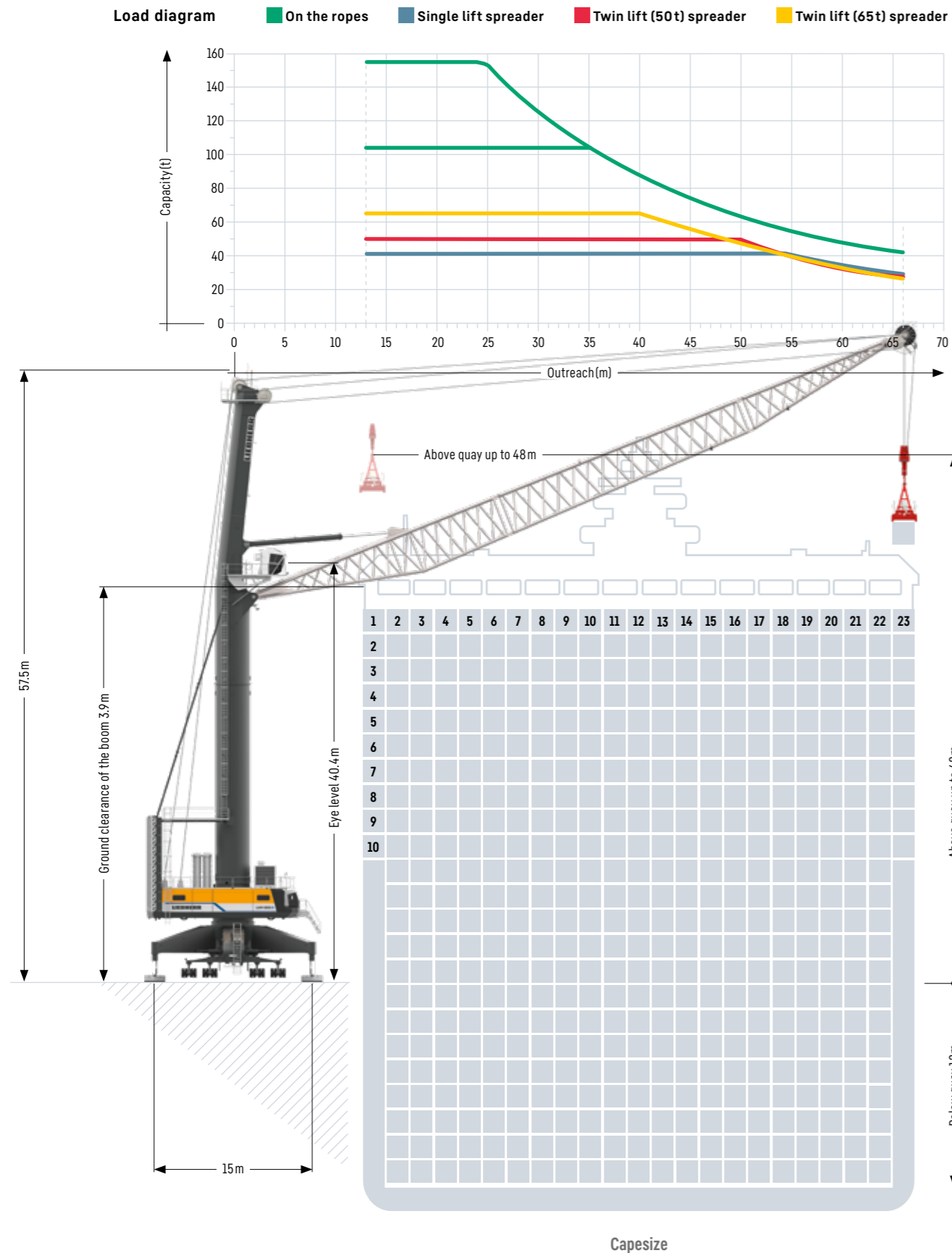
Maximum outreach  
66 m



Ship size  
Ultra large container vessel

# Main dimensions

## Container operation



# Lifting capacities

## Container operation

### Lifting capacity 104 t

Outreach (m)	Spreader operation under			Hook operation on the ropes
	Single lift (t)	Twin lift (50t) (t)	Twin lift (65t) (t)	Standard (t)
13 - 42	41.0	50.0	65.0	104.0
43	41.0	50.0	65.0	103.0
44	41.0	50.0	65.0	99.6
45	41.0	50.0	65.0	96.4
46	41.0	50.0	65.0	93.3
47	41.0	50.0	65.0	90.3
48	41.0	50.0	65.0	87.6
49	41.0	50.0	65.0	84.8
50	41.0	50.0	65.0	82.3
51	41.0	50.0	65.0	79.9
52	41.0	50.0	62.9	77.4
53	41.0	50.0	60.6	75.1
54	41.0	50.0	58.6	73.1
55	41.0	50.0	56.7	71.2
56	41.0	50.0	54.7	69.2
57	41.0	50.0	53.1	67.6
58	41.0	50.0	51.4	65.9
59	41.0	50.0	49.9	64.4
60	41.0	48.7	48.4	62.9
61	41.0	47.4	47.1	61.6
62	41.0	46.1	45.8	60.3
63	41.0	44.9	44.6	59.1
64	41.0	43.7	43.4	57.9
65	41.0	42.5	42.2	56.7
66	41.0	41.4	41.1	55.6

Weight rotator 3.5t ; Weight fully automatic (telescopic) spreader 9.0t  
 Weight twin lift (50t) spreader 10.7t ; Weight twin lift (65t) spreader 11.0t

### Lifting capacity 154 t

Outreach (m)	Spreader operation under			Hook operation on the ropes
	Single lift (t)	Twin lift (50t) (t)	Twin lift (65t) (t)	Standard (t)
13 - 31	41.0	50.0	65.0	154.0
32	41.0	50.0	65.0	152.5
36	41.0	50.0	65.0	130.8
40	41.0	50.0	65.0	114.2
43	41.0	50.0	65.0	103.0
44	41.0	50.0	65.0	99.6
46	41.0	50.0	65.0	93.3
48	41.0	50.0	65.0	87.6
50	41.0	50.0	65.0	82.3
51	41.0	50.0	64.9	79.9
52	41.0	50.0	62.4	77.4
53	41.0	50.0	60.1	75.1
54	41.0	50.0	58.1	73.1
55	41.0	50.0	56.2	71.2
56	41.0	50.0	54.2	69.2
57	41.0	50.0	52.6	67.6
58	41.0	50.0	50.9	65.9
59	41.0	49.7	49.4	64.4
60	41.0	48.2	47.9	62.9
61	41.0	46.9	46.6	61.6
62	41.0	45.6	45.3	60.3
63	41.0	44.4	44.1	59.1
64	41.0	43.2	42.9	57.9
65	41.0	42.0	41.7	56.7
66	41.0	40.9	40.6	55.6

Weight rotator 4.0t ; Weight fully automatic (telescopic) spreader 9.0t  
 Weight twin lift (50t) spreader 10.7t ; Weight twin lift (65t) spreader 11.0t

**Standard configuration – Turnover up to 34 cycles per hour**  
**Pactronic® – Turnover up to 40 cycles per hour**

**Precision to perfection: With incredibly short acceleration times for all crane motions, Liebherr is the top performer in container handling.**

# Technical data

## Hook & container operation

### Capacity and classification

	Capacity	Classification
Standard operation	≤ 154 t	A3
Standard operation	≤ 95 t	A5
Container operation	≤ 63 t	A7

### Main dimensions

Outreach	13 – 64 m
Height of boom fulcrum	36.7 m
Tower cabin height (eye level)	40.4 m
Overall height (top of tower)	57.5 m
Overall length of undercarriage	23.0 m
Overall width of undercarriage	10.3 m
Number of axle sets (standard)	34
Number of axle sets (optional)	40

### Working speeds

Hoisting / lowering	0 – 120 m/min
Slewing	0 – 1.6 rpm
Luffing (average horizontal speed)	66 m/min
Travelling	0 – 4 km/h

### Propping arrangements

Standard supporting base	15.0 m x 15.0 m
Standard pad dimension	8.0 m x 2.0 m
Standard supporting area of pads	16 m <sup>2</sup>

Optional size of supporting pads and bases on request

### Quay load arrangements

Uniformly distributed load	2.24 t/m <sup>2</sup>
Max. load per tyre	6.0 t

Due to a unique undercarriage design the quay loads specified above can even be reduced. Pad sizes, supporting base and the number of axle sets can easily be adapted to comply with the most stringent quay load restrictions.

### Weight

Total weight of crane in container version (104 t winch, 64 m boom, Pactronic <sup>®</sup> )	approx. 748 t
--	---------------

### Hoisting heights

Above quay at minimum radius	48 m
Above quay at maximum radius	48 m
Below quay level	12.0 m

# Optional equipment

### Additional products and services

- Electric drive with high or low voltage connection
- Fully biodegradable hydraulic fluids
- HVO 100 certified drives
- Pactronic<sup>®</sup> - power by accumulator and electronics
- SmartGrip - intelligent grabbing
- Anti-sway system
- Teach-In - semi-automatic point to point system
- Sycratronic<sup>®</sup> - synchronizing crane control system
- Vertical Line Finder - diagonal pull preventing system
- Collision alert system
- LiDAT<sup>®</sup> - smartApp
- Economy software - for optimised fuel consumption
- Video monitoring system
- Radio remote control
- Autopropping undercarriage
- Cyclone air-intake system for the engine
- Low temperature package
- Customer-specific painting & logo
- Additional (driven) axle sets
- Axle sets equipped with foamed tyres
- Different supporting bases and pad sizes
- And many more as per customers' requirements