

EN

# FCC 280

liebherr.com

## LIEBHERR

Liebherr fixed cargo cranes



**Maximum lifting capacity**  
45 t (Container operation)  
35 t (Grab operation)

**Maximum outreach**  
38 m

# Technical data

## Boom configurable working radius

|                                  |            |
|----------------------------------|------------|
| Config. 1: min. to max. (radius) | 4 m - 38 m |
| Config. 2: min. to max. (radius) | 4 m - 32 m |

## Weight

|   |             |
|---|-------------|
| Weight of crane<br>(without pedestal and lifting attachments) | approx. 70t |
|---|-------------|

## Design conditions

|                             |                |
|-----------------------------|----------------|
| <b>Maximum admissible</b>   |                |
| Ambient working temperature | -20°C to +45°C |
| Humidity maximum            | 93%            |
| <b>Maximum wind speed</b>   |                |
| Working condition           | 20 m/sec       |
| Parking condition           | 63 m/sec       |

## Simultaneous speed

|           |  |
|-----------|--|
| 2 motions | Full load and speed  |
| 3 motions | Slewing/luffing full load and speed,<br>hoisting approx. 60 % (after acceleration) |

## Hoisting/lowering

|                                   |                    |
|-----------------------------------|--------------------|
| Hoisting/lowering with empty hook | 0 m/min - 40 m/min |
| Hoisting/lowering with 35t        | 0 m/min - 29 m/min |
| Hoisting/lowering with 45t        | 0 m/min - 23 m/min |

## Luffing

|                                |                |
|--------------------------------|----------------|
| Luffing time (from 4 m - 38 m) | approx. 92 sec |
|--------------------------------|----------------|

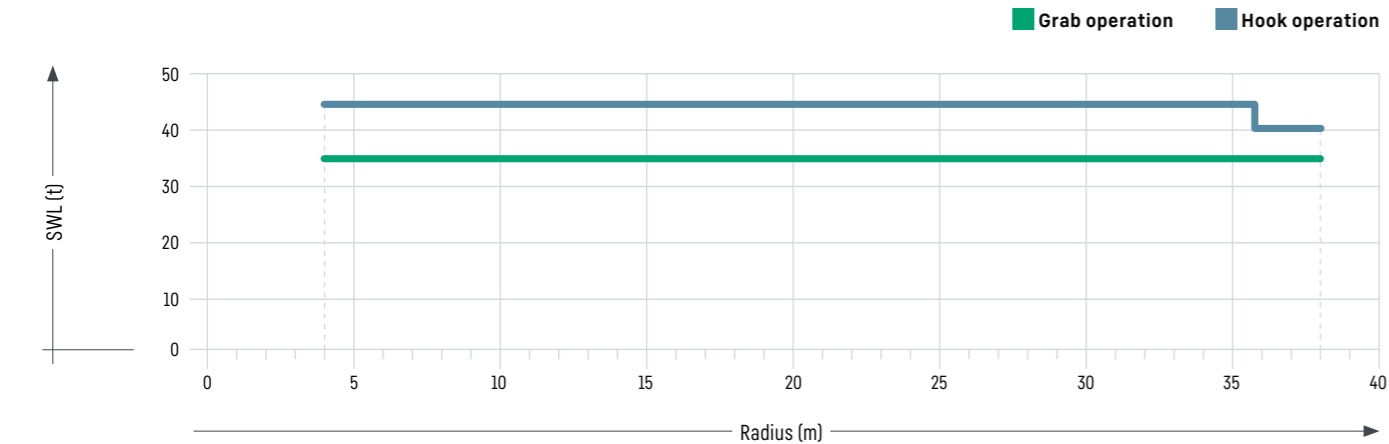
## Slewing

|               |                 |
|---------------|-----------------|
| Slewing speed | 0 rpm - 1.4 rpm |
| Slewing range | 360° unlimited  |

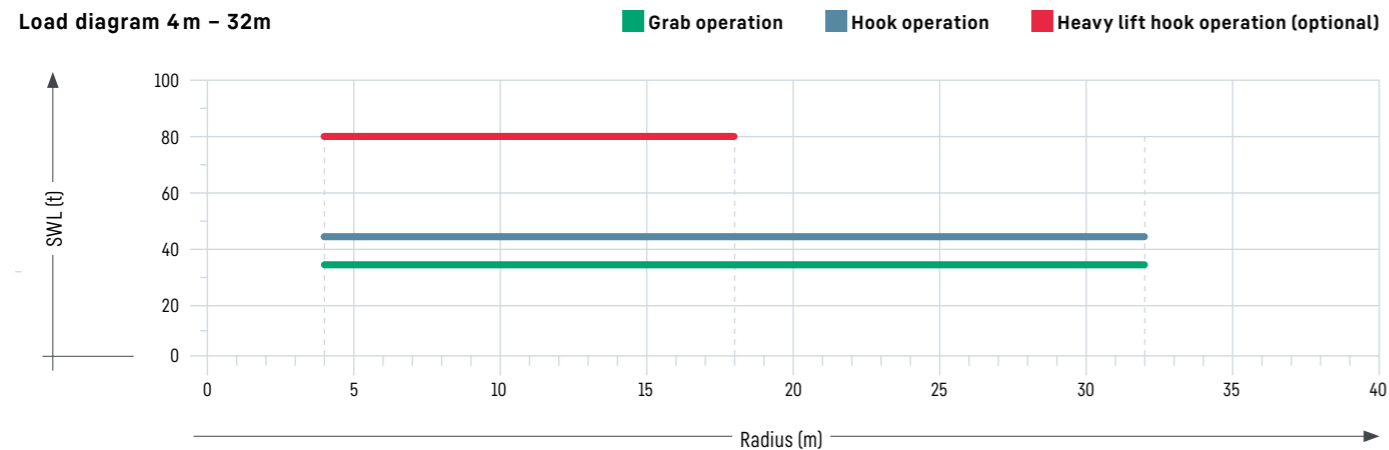
## Electric motor

|                         |                           |
|-------------------------|---------------------------|
| Type of motor           | three phase squirrel cage |
| Class of protection     | IP 55                     |
| Class of insulation     | F/B                       |
| Starting                | star delta                |
| Nominal output          | S6-40 % ED                |
| Main power supply range | 380 V - 440 V             |
| Auxiliary power supply  | 230 V, 3 ph               |

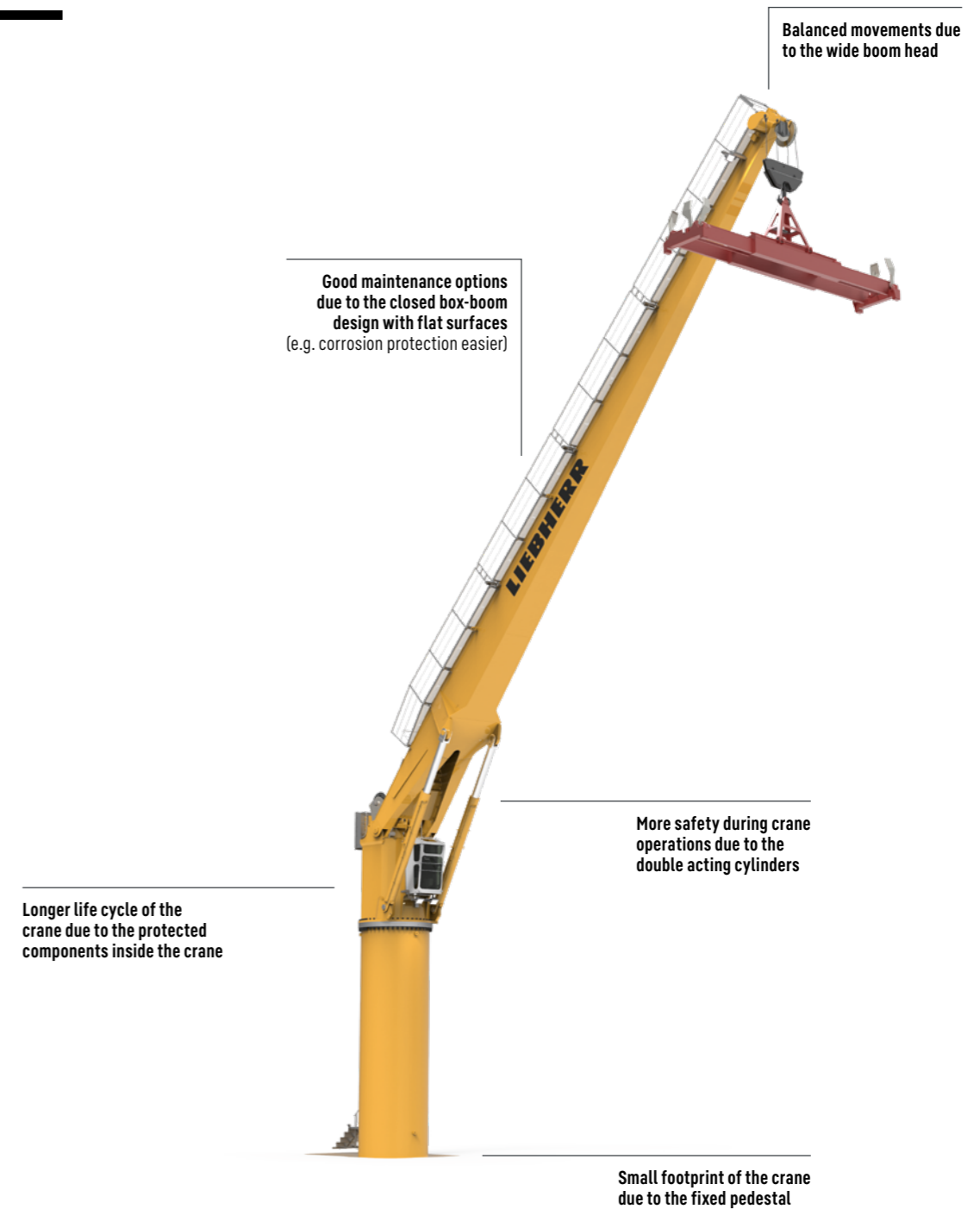
## Load diagram 4 m - 38 m



## Load diagram 4 m - 32m



# General arrangement



# Advantages of Liebherr FCC 280

- Litronic system designed and tested by Liebherr
- Energy-efficient hydraulic drive
- Components tested and proven for extreme conditions and performance
- Long life hydraulic luffing cylinders (chrome-nickel plated) for reduced maintenance
- Ready for the use of automated systems

# Optional features

- Comfort variant with large cabin and pleasant ascent option
- Heavy-lift application up to 80 t
- Designed in accordance with the highest European standards (directive 2006/42/EC)
- Automatic spreader and motor grab operation
- Additional platforms and boom walkways for service and maintenance purposes



## LiCAS:

Liebherr cranes can be equipped with the Liebherr Collision Alert System (LiCAS). This additional assistance system sets new levels in operational safety during heavy-duty cargo handling. LiCAS supports the crane driver by permanently detecting the distances between several cranes and warns of potential unsafe conditions.

## LiDAT smartApp:

With LiDAT smartApp, it's possible to analyse your crane (operating and performance) data and get answers from it almost immediately. That leads to direct decisions. The ability to work faster gives operators a competitive edge they didn't have before. The data analytics helps to detect bottle necks and to identify new opportunities.

## LiSIM®:

LiSIM for CBG series increases port safety and productivity by providing a cost-effective and highly efficient crane operator training solution. The development of this sophisticated training tool was prompted by Liebherr's extensive experience in crane operator training. Based on the original Litronic® crane control system, LiSIM® is the only realistic virtual solution available in the market for the training of the precise and innovative control system of Liebherr cranes.