

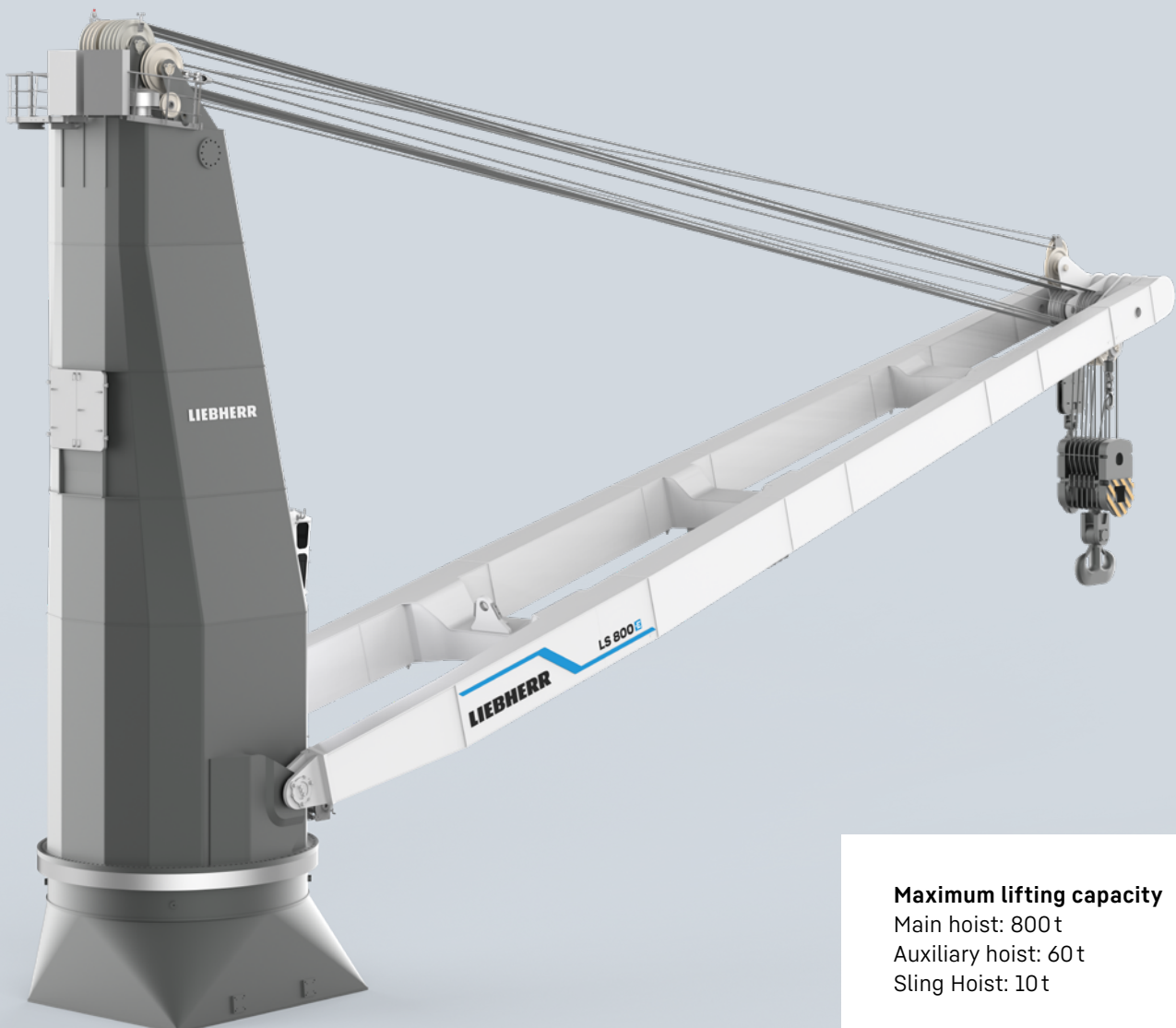
EN

# LS 800 E

[www.liebherr.com](http://www.liebherr.com)

## LIEBHERR

Ship cranes



**Maximum lifting capacity**

Main hoist: 800 t

Auxiliary hoist: 60 t

Sling Hoist: 10 t

# Technical data

## Working radius

min. to max.	6.8 m - 39.0 m
min. to max.	6.8 m - 40.0 m
min. to max.	6.7 m - 40.3 m

## Weight

Weight of crane (without pedestal and lifting attachments)	approx. 385 t
---	---------------

## Design conditions

<b>Maximum admissible</b> Ambient working temperature	-30°C to +45°C
Humidity maximum	93%
<b>Maximum wind speed</b> Working condition	20 m/sec
Parking condition	63 m/sec

## Drive System

Nominal current main supply	800A
Electric Motor Duty Cycles	S1
Class of insulation	F
Type of motors	three phase squirrel cage
Electric motors	Frequency controlled
Main power supply	440 V, 60Hz 3 ph +N
Auxiliary power supply	440V, 60Hz 3ph +N

## Hoisting/lowering

<b>Main hoist</b> 800t	2,3 m/min
≤ 200t	7,0 m/min
<b>Auxiliary hoist</b> 60t	0 m/min - 25,5 m/min
≤ 30t	0 m/min - 12,9 m/min
<b>Sling hoist</b> with 0t	0 m/min - 60 m/min
10t	0 m/min - 31,5 m/min

## Luffing

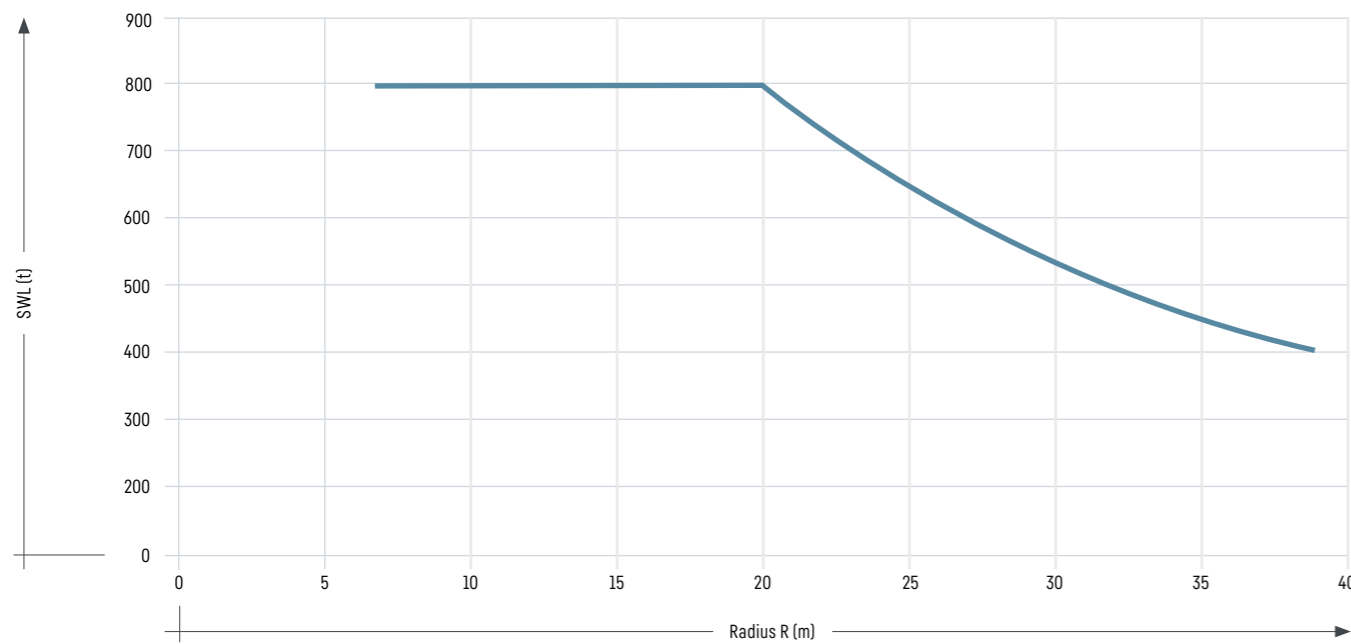
400t (from max. to min.)	approx. 408 sec
0t (from max. to min.)	approx. 305 sec

## Slewing

reduced torque	0 rpm - 0.4 rpm
max. torque	0 rpm - 0.2 rpm
Slewing range	360° unlimited

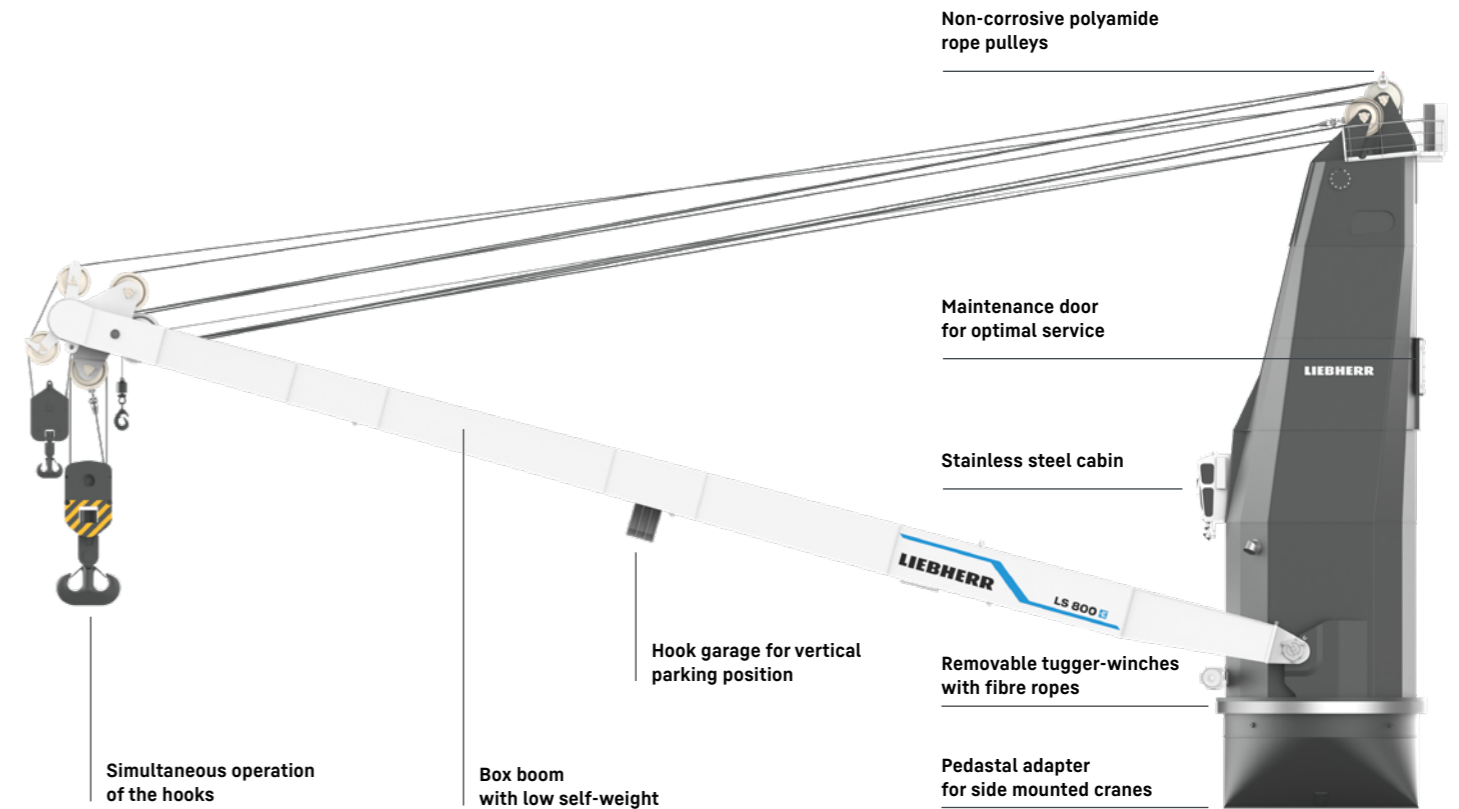
## Load diagram

■ Harbour, sheltered water\*



\*Trim and Heel 3°/3°

# General arrangement



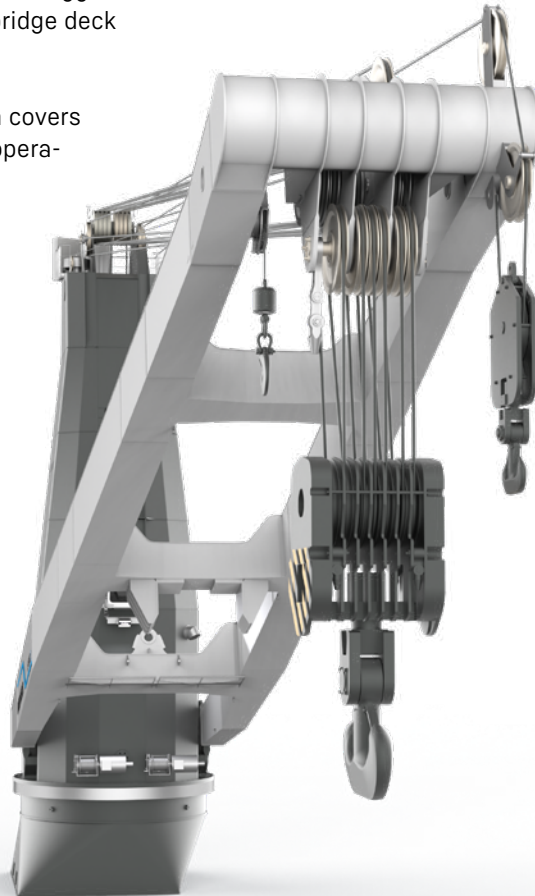
# Advantages

- Fully electric crane with inverter technology
- All components inside the crane column
- Precise and reliable crane control system Litronic - made by Liebherr
- Power saving through active communication between the crane and ship energy management systems
- Power electronics and switch cabinets in separate room with air conditioning
- Components developed and produced in-house
- Vertical boom rest with locking pin inside the crane column

# Features



- 60t auxiliary hoist and 10t sling hoist
- Personnel lift
- Synchronised lifting in tandem operation
- Intelligent automatic greasing systems for slewing bearing, pivot point and rope pulleys
- Remote control for main functions and tugger winches
- Additional monitor on the vessel's bridge deck
- Radio communication system
- Liebherr remote service
- Faster opening and closing of hatch covers and tween decks by switching the operating logic
- Pendulum garages for auxiliary hoist and sling hoist



## Litronic

The crane management system is the centrepiece for precise and reliable crane operation. The in-house developed and manufactured Litronic is a unique one-system-solution which unites state-of-the-art technologies for advanced crane control. Litronic is the one-level interface between crane and driver. Various analysis tools provide relevant information on the operation. The system empowers the driver to efficiently control the crane and to optimize cargo operation. Litronic is an integrated solution, uniting motor and safety and diagnosis systems, communication and information systems as well as machine data recording. It offers a wide range of possibilities to modularly integrate functionalities and solutions as options during the ordering process upfront or as retrofit kits later on.

## LiDAT

Remote maintenance via GSM-modem and LiDAT interface enables immediate troubleshooting by the crew and Liebherr technical advisors. This allows to put back the crane into operation without a separate service visit.

## XpertAssist

The XpertAssist subscription offers an extension of the common remote maintenance service, including a direct audio/video uplink to Liebherr's special trained customer service, featuring augmented reality elements for enhanced diagnosis and advanced technical advice.