
LS 250

www.liebherr.com

LIEBHERR

Ship cranes



Maximum lifting capacity
Main hoist: 250 t
Auxiliary hoist: 45 t

Technical data

Working radius

| | |
|----------------------------------|--------------|
| Config. 1: min. to max. (radius) | 3.8 m - 33 m |
| Config. 2: min. to max. (radius) | 4.6 m - 36 m |

Weight

| | |
|---|---------------|
| Weight of crane (without pedestal and lifting attachments) | approx. 145 t |
|---|---------------|

Design conditions

| | |
|--|----------------|
| Maximum admissible Ambient working temperature | -20°C to +45°C |
| Humidity maximum | 93% |
| Maximum wind speed Working condition | 20 m/sec |
| Parking condition | 63 m/sec |

Electric data of the motor

| | | |
|------------------------|---------------------------|-----------------------|
| Type of motor | three phase squirrel cage | |
| Class of protection | IP 55 | |
| Class of insulation | F | |
| Starting | star delta | |
| | 50 Hz | 60 Hz |
| Nominal output | 2x 140 kW (S6-40% ED) | 2x 180 kW (S6-40% ED) |
| Nominal current | 258 A per motor | 258 A per motor |
| Starting current | 667 A per motor | 656 A per motor |
| Main power supply | 400 V | 440 V |
| Auxiliary power supply | 230 V | 230 V |

Hoisting/lowering

| | |
|------|----------------------|
| 250t | 0 m/min - 4.2 m/min |
| 200t | 0 m/min - 4.2 m/min |
| 150t | 0 m/min - 5.2 m/min |
| 100t | 0 m/min - 9.7 m/min |
| 0t | 0 m/min - 12.8 m/min |

Luffing time

| | |
|---------------------------|-----------------|
| 120 t (from 4,6 m - 36 m) | approx. 230 sec |
| 0t (from 4,6 m - 36 m) | approx. 100 sec |

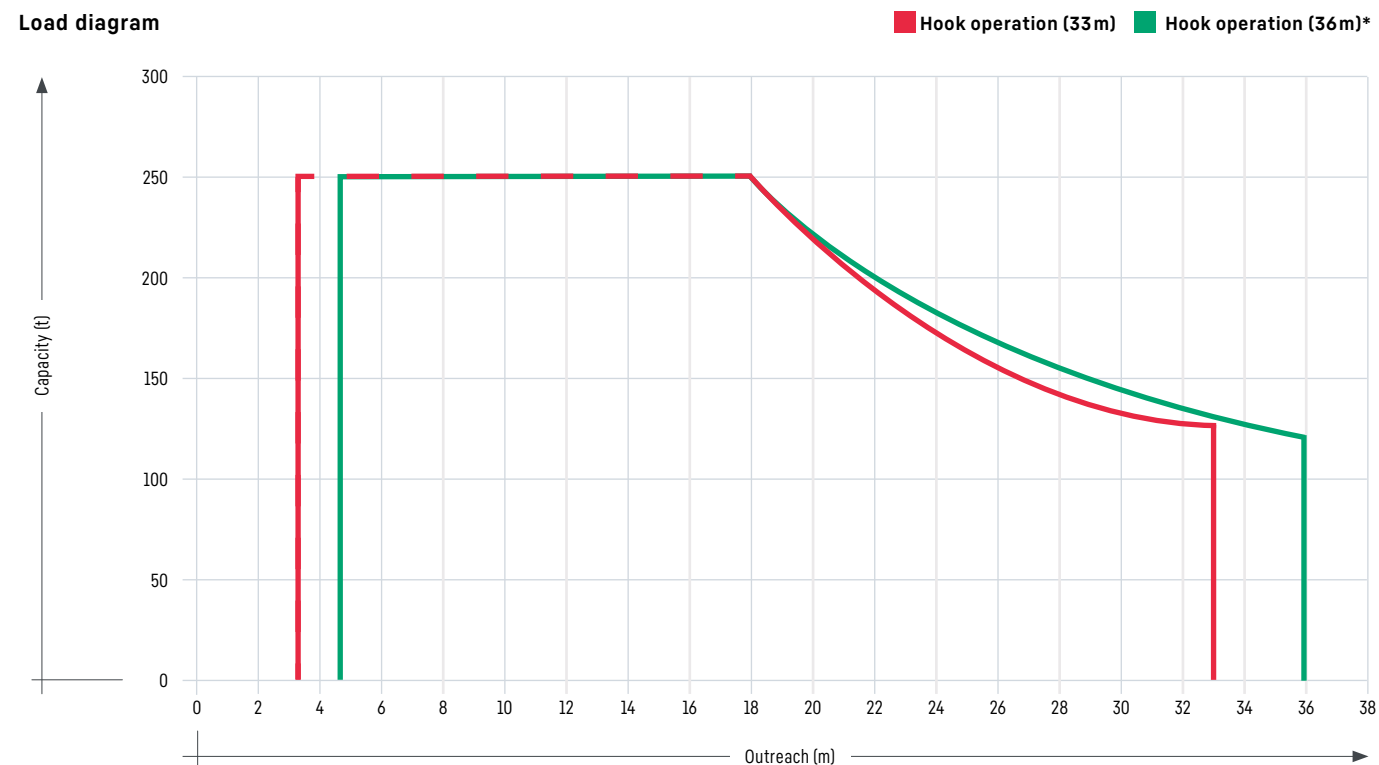
Slewing

| | |
|---------------|-----------------|
| <=100t | 0 rpm - 0.6 rpm |
| >100t | 0 rpm - 0.4 rpm |
| Slewing range | 360° unlimited |

Auxiliary hoist

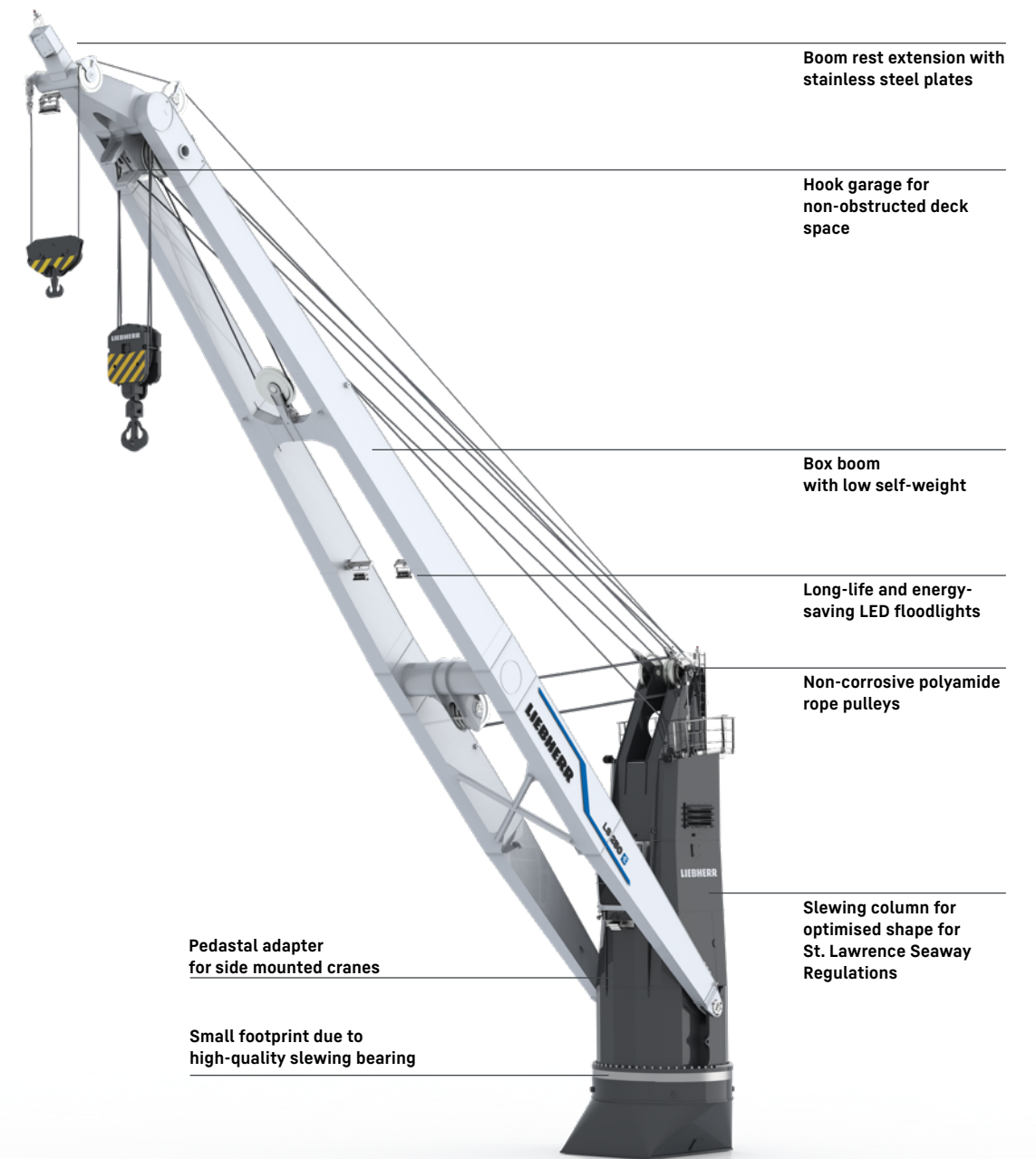
| | |
|-------|--------------------|
| 45 t | 0 m/min - 20 m/min |
| ≤16 t | 0 m/min - 32 m/min |
| 0 t | 0 m/min - 46 m/min |

Load diagram



*Trim and Heel 3°/3°

General arrangement



Boom rest extension with stainless steel plates

Hook garage for non-obstructed deck space

Box boom with low self-weight

Long-life and energy-saving LED floodlights

Non-corrosive polyamide rope pulleys

Slewing column for optimised shape for St. Lawrence Seaway Regulations

Pedestal adapter for side mounted cranes

Small footprint due to high-quality slewing bearing

Advantages

- Components developed and produced in-house
- Precise and reliable crane control system Litronic - made by Liebherr
- Energy-efficient constant-pressure hydraulic drive
- Ready for the use of automated assistance systems
- Operator's cabin with A/C

Features



- 45t auxiliary hoist with load chart for grab operation and for personnel lift
- Intelligent automatic greasing systems for rope pulleys, slewing bearing and pivot point
- Remote control for precise control of the crane outside the cabin
- Additional monitor on the vessel bridge to get the overview of the crane parameters at all times
- Radio communication system
- Liebherr Remote Service



Litronic

The crane management system is the centrepiece for precise and reliable crane operation. The in-house developed and manufactured Litronic is a unique one-system-solution which unites state-of-the-art technologies for advanced crane control. Litronic is the one-level interface between crane and driver. Various analysis tools provide relevant information on the operation. The system empowers the driver to efficiently control the crane and to optimize cargo operation. Litronic is an integrated solution, uniting motor and hydraulic management, safety and diagnosis systems, communication and information systems as well as machine data recording. It offers a wide range of possibilities to modularly integrate functionalities and solutions as options during the ordering process upfront or as retrofit kits later on.

LiDAT

Remote maintenance via GSM-modem and LiDAT interface enables immediate troubleshooting by the crew and Liebherr technical advisors. This allows to put back the crane into operation without a separate service visit.

XpertAssist

The XpertAssist subscription offers an extension of the common remote maintenance service, including a direct audio/video uplink to Liebherr's special trained customer service, featuring augmented reality elements for enhanced diagnosis and advanced technical advice.