

Press release

## **The Crane Finder by Liebherr: now available in a new version and as an app**

- Liebherr has improved the Crane Finder and integrated new features
- Completely revised database
- New app enables user-friendly operation on mobile devices

Liebherr is presenting a new version of the Crane Finder at the Customer Days. The simple tool for finding the right crane and the optimum configuration for a specific load case has been improved in many areas and now includes new integrated features. The Crane Finder is now also available as an app for smartphones and tablets. It offers increased user-friendliness and, thanks to the mobile application, is even more flexible than before.

Ehingen (Donau) (Germany), 11 June 2024 – By simply entering a few details such as the load, required height and desired radius, the Crane Finder provides a list of possible cranes for a specific task. A new version of the Liebherr Crane Finder has been online since mid-May and offers dispatchers and crane operators a wide range of new features and improvements – some in the background, some prominently visible.

### **Updated database**

Liebherr has completely revised the underlying crane data on the basis of the latest load charts and compiled them in a new database. The advantage for users is that the Crane Finder now has access to the latest planning data, all operating modes, more information and significantly more crane types when searching.

The new database enables many more functions and provides additional information, such as details on ballast radius, support, main boom angle, accessory angle and central ballast. As before, all information can be displayed in large tiles or, as a completely new feature, in a compact list view.

### **New feature saves money and boosts environmental protection**

The "Optimise configuration" button is a brand-new addition. As before, the Crane Finder searches for the smallest possible crane for the selected load case – always with the maximum load capacity, i.e. with full ballast. In many cases, however, the crane could do the job with less ballast. The new feature shows the minimum amount of ballast required to fulfil the current load requirement. In most cases, the amount of ballast can be reduced – extra weight that the customer does not need to transport to the construction

site. In this way, the Crane Finder actively helps to save fuel and therefore CO<sub>2</sub>, contributing to environmental protection by helping the crane operator to reduce their transport costs.

A total of 76 mobile and crawler cranes from the current Liebherr portfolio as well as selected older machines are included in the search. A multi-select filter has been added to ensure clarity despite the large number of machines. This lets the user specify with a mouse click whether, for example, they only want the results list to include the LRT cranes in their own fleet.

## **Liebherr Crane Finder – now also available as an app**

For improved user-friendliness on smartphones and tablets – compared to the web version – the Crane Finder is now also available as an app. The mobile application offers a particularly intuitive user interface that enables easy navigation and searching. It also allows even more flexible use – you can access the information you need from anywhere, whether you're on site, in the office or on the move.

The app includes a favourites function that allows users to select their preferred crane models in the MyLiebherr portal and access them quickly. This is particularly useful for crane drivers, as they are primarily interested in information about the crane they are currently operating.

Another advantage of the app is that it can also be used without the user having to register in the MyLiebherr customer portal. However, the app offers additional features for registered users who are logged in via the portal.

The app is now available to download free of charge for iOS and Android devices in the respective stores.

Download for iOS: <https://go.liebherr.com/luf82q>



Download for Android: <https://go.liebherr.com/8y74c6>



## About Liebherr-Werk Echingen GmbH

Liebherr-Werk Echingen GmbH is a leading manufacturer of mobile and crawler cranes. Its range of mobile cranes extends from 2-axle 35 tonne cranes to heavy duty cranes with a lifting capacity of 1200 tonnes and a 9-axle chassis. Its lattice boom cranes on mobile or crawler travel gear deliver lifting capacities of up to 3000 tonnes. With universal boom systems and extensive additional equipment, they can be seen in action on construction sites throughout the world. The Echingen site has a workforce of 5,000. An extensive, global service network guarantees the high availability of Liebherr mobile and crawler cranes. In 2023, the Liebherr plant in Echingen recorded a turnover of 2.81 billion euros.

## About the Liebherr Group – 75 years of moving forward

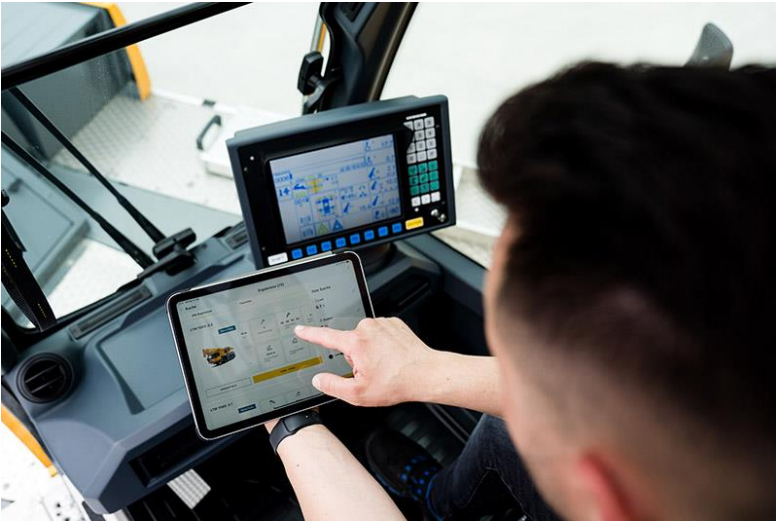
The Liebherr Group is a family-run technology company with a highly diversified product programme. The company is one of the largest construction equipment manufacturers in the world. It also provides high-quality, user-oriented products and services in a wide range of other areas. The Liebherr Group includes over 150 companies across all continents. In 2023, it employed more than 50,000 staff and achieved combined revenues of over 14 billion euros. Liebherr was founded by Hans Liebherr in 1949 in the southern German town of Kirchdorf an der Iller. Since then, the employees have been pursuing the goal of achieving continuous technological innovation, and bringing industry-leading solutions to its customers. Under the slogan '75 years of moving forward', the Group celebrates its 75th anniversary in 2024.

## Images



liebherr-crane-finder-app-01.jpg

Even more user-friendly: find the right crane with the Crane Finder app.



liebherr-crane-finder-app-02.jpg

Crane operators are primarily interested in information about the crane they are currently operating.

## Contact

Wolfgang Beringer  
Marketing and Communication  
Phone: +49 7391 / 502-0  
Email: [wolfgang.beringer@liebherr.com](mailto:wolfgang.beringer@liebherr.com)

## Published by

Liebherr-Werk Ehingen GmbH  
Ehingen (Donau) / Germany  
[www.liebherr.com](http://www.liebherr.com)