

Press release

## LTM 1450-8.1 from Advanced Cranes dismantles weir in Victoria

---

- Liebherr mobile crane LTM 1450-8.1 from Advanced Cranes dismantles Maffra Weir in Victoria, Australia
- Advanced Cranes' 8-axle crane was the first crane of this type in Victoria

The restricted set-up area for a crane made this job a real challenge – an LTM 1450-8.1 from Australian crane contractor Advanced Cranes and Rigging dismantled a weir in Maffra. The hoisting equipment on the 60 year old structure and its concrete bridge were replaced. The weir is on Macalister River, around 200 kilometres east of Melbourne.

Ehingen (Donau), (Germany), 7 September 2021 – “Our LTM 1450-8.1 was the first crane of this type delivered to Victoria”, says Adam Tuddenham, Managing Director of Advanced Cranes and Rigging. The 8-axle crane has been part of Advanced Cranes' fleet since 2020. “Today it is still the only crane of this type in the State of Victoria and is delivering reliable, valuable services for us.” The Liebherr 450-tonne crane can be described as a large fast-erecting crane as it combines particularly good mobility with short set-up times on site. At the same time, it delivers incredible capacity with its long, powerful telescopic boom.

### Restricted set-up area for the large crane

For the job in Maffra, the constricted area for the crane position and the set-up work posed something of a challenge to the team – the LTM 1450-8.1 had to be positioned so that it could complete the hoisting process over the side whilst remaining within the required working radius. The steep slope, uneven terrain and an underground water tunnel made the search for a suitable crane position even harder. By using additional crane mats, the Advanced Cranes team finally managed to level the LTM 1450-8.1 adequately.

Advanced Cranes set up the LTM 1450-8.1 with a 28 metre luffing lattice jib and total ballast of 134 tonnes for this job. VarioBallast® is one of the special features of the Liebherr crane. The ballast radius can be infinitely varied using a simple hydraulic slewing mechanism. At maximum radius, the lifting capacity is also at its maximum. The radius can be reduced in constricted conditions.

Two core holes had been drilled into the 60 year old bridge before the crane started work. The attachment chains were threaded through these and connected using a 9 metre spreader bar. Ultimately the Advanced Cranes team and their LTM 1450-8.1 completed the hoisting work without any problems.

They dismantled the existing gate lifting equipment for the weir and the reinforced concrete bridge. The heaviest load for the 8-axle crane was 32 tonnes plus 4 tonnes for rigging and hook at a 34-metre radius and a maximum hook height of 20 metres.

### **About Liebherr-Werk Ehingen GmbH**

Liebherr-Werk Ehingen GmbH is a leading manufacturer of mobile and crawler cranes. Its range of mobile cranes extends from 2-axle 35 tonne cranes to heavy duty cranes with a lifting capacity of 1200 tonnes and a 9-axle chassis. Its lattice boom cranes on mobile or crawler crane chassis deliver lifting capacities of up to 3000 tonnes. With universal boom systems and extensive additional equipment, they can be seen in action on construction sites throughout the world. The Ehingen site has a workforce of 3,600. Extensive, global service guarantees the high availability of Liebherr mobile and crawler cranes. In 2020, the Liebherr plant in Ehingen recorded a turnover of 2 billion euros.

### **About the Liebherr Group**

The Liebherr Group is a family-run technology company with a widely diversified product range. The company is one of the largest manufacturers of construction machines in the world, but also supplies technically advanced, user-focused products and services in many other sectors. The group currently comprises more than 140 companies based in every continent of the world, has a workforce of around 48,000 and recorded a consolidated total turnover of more than 10.3 billion euros in 2020. Since it was founded in 1949 in Kirchdorf an der Iller in southern Germany, Liebherr's aim has been to win customers by supplying high quality solutions and to contribute to technological progress.

### **Photographs**



liebherr-ltm1450-8-1-advanced-job.jpg

Advanced Cranes' LTM 1450-8.1 dismantled the 60 year old Maffra Weir on Macalister River in Victoria.



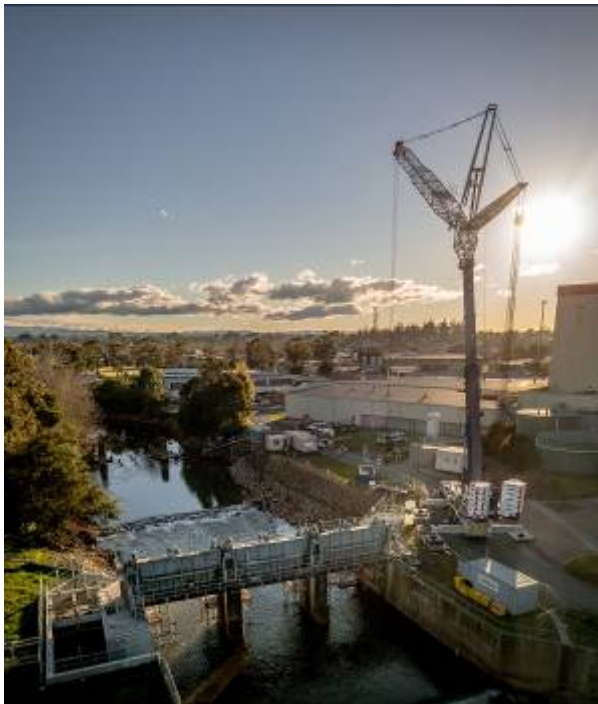
liebherr-ltm1450-8-1-advanced-load.jpg

Securely attached – core holes were drilled into the 30 tonne sections of the reinforced concrete bridge to secure the attachment chains before the hoist was completed.



liebherr-ltm1450-8-1-advanced-set-up.jpg

Constricted conditions, gradients and an underground water tunnel made the search for a set-up position for the LTM 1450-8.1 difficult for Australian crane contractor Advanced Cranes and Rigging.



liebherr-ltm1450-8-1-advanced-maffra.jpg

The LTM 1450-8.1 large fast-erecting crane features excellent mobility and short set-up times. Advanced Cranes received the first crane of this type delivered to Australia.

### **Contact person**

Wolfgang Beringer

Marketing and Communication

Phone: +49 7391/502-3663

Email: [wolfgang.beringer@liebherr.com](mailto:wolfgang.beringer@liebherr.com)

### **Published by**

Liebherr-Werk Ehingen GmbH

Ehingen (Donau) / Germany

[www.liebherr.com](http://www.liebherr.com)