

Press release

## **New Liebherr ship to shore container crane enters service at Terminales Maritimas Del Sureste in the Port of Alicante**

Killarney (Ireland), March 2021 – Liebherr Container Cranes have handed over a ship to shore (STS) container crane to Terminales Maritimas Del Sureste S.A (TMS) in the Port of Alicante, Spain.

The crane has an outreach of 46.9 m, a span of 15.24 m, and a lift height of 36 m with a SWL of 50 tonnes under single lift spreader. The crane will form a key part of the port extension project operated by TMS under a concession provided by the Alicante Port Authority. The extension project will help to provide the port with the necessary infrastructure and modern equipment to meet the competitive challenges into the future. This is in line with transportation policies promoted by the European Union in response to increased maritime traffic in the Mediterranean.

Following the contract award in Quarter 3 2019, the crane was designed and built in Ireland by Liebherr Container Cranes Ltd. The Liebherr STS crane design with high tensile steel and a lattice beam and boom results in an optimised weight distribution for the crane with a low centre of gravity. The Liebherr crane design is perfectly suited to the reduced permissible wheel loading requirements of older quays.

All terminal equipment at TMS is linked to the control center for quality assurance and to guarantee performance in operations. Likewise, the Liebherr crane features a remote crane management system allowing for remote assistance, service and diagnostics. For TMS safety is an important consideration at their facility. The new Liebherr STS features a traffic light system for controlled traffic flow, laser and mechanical crane to crane anti-collision systems, ultrasonic anti-collision systems for gantry travel as well as laser boom to vessel anti-collision and sill beam protection systems.

---

Liebherr Iberica, a mixed sales and service company based in Spain worked closely with Liebherr Container Cranes Ltd. and with Terminales Maritimas Del Sureste to bring the project to a successful completion. For the future, TMS will benefit from the established service network and experienced service engineers of Liebherr Iberica.

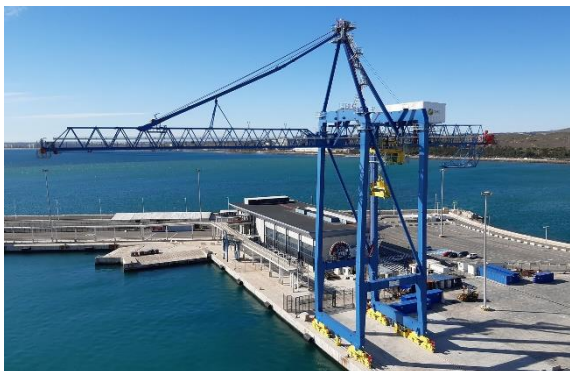
**About Liebherr Container Cranes Ltd.**

Liebherr Container Cranes Ltd. Is one of the world’s leading manufacturers of ship to shore container cranes, rail mounted gantry cranes and rubber tyre gantry cranes. From a base in Killarney, Ireland, Liebherr Container Cranes Ltd designs, builds and exports container cranes worldwide. Founded in 1958 as the first Liebherr factory outside of Germany, today, container cranes manufactured by Liebherr in Ireland are renowned for their quality, longevity and productivity.

**About the Liebherr Group**

The Liebherr Group is a family-run technology company with a highly diversified product portfolio. The company is not only one of the largest construction equipment manufacturers in the world, but also provides high quality and user-oriented products and services in a wide range of other areas. The Liebherr Group includes over 140 companies across all continents, employs more than 48,000 staff and in 2019 achieved combined revenues of over 11.7 billion euros. Since its foundation in 1949 in Kirchdorf an der Iller in Southern Germany, Liebherr has been pursuing the goal of achieving continuous technological innovation, and bringing industry-leading solutions to its customers.

**Images**



liebherr-images-alicante.jpg

**Caption: A new Liebherr ship to shore container crane at TMS, Alicante**

---

**Contact person**

Trevor O'Donoghue

Marketing Manager

Telephone: +353 (0)64 6680459

E-Mail: [trevor.odonoghue@liebherr.com](mailto:trevor.odonoghue@liebherr.com)

**Published by**

Liebherr Container Cranes

Killarney / Ireland

[www.liebherr.com](http://www.liebherr.com)