

Press release

Space limited in Downtown Milan: Liebherr LTM 1350-6.1 convinces with Y-guying

- Casella Autogrù lifts air conditioning units in Downtown Milan using a LTM 1350-6.1
- Very limited space and time to make the lifts onto the roof of 18 floor skyscraper
- LTM 1350-6.1 is the first 350t crane with a Y-guying system

Being involved in supporting activities for the redevelopment project of a skyscraper complex in downtown Milan, Italy, Casella Autogrù choose their Liebherr LTM 1350-6.1 mobile crane to place air conditioning units on the rooftop of a 63 m skyscraper. Crane operator Claudio Lozza lifted the 12.5 t weights carefully with a radius of 45 m under a bit of time pressure, as the road traffic had to be cut off for all the activities period in the sprawling city center.

Ehingen / Donau (Germany), 16 November 2020 – Milan, a lively town in the North of Italy and famous for its cathedral and shopping malls, is also one of the biggest Italian business areas. Every day, restructurings and redevelopments are taking place, as the space in the city center and even the metropolitan area is tight and limited. Casella Autogrù was therefore tasked to take part in the redevelopment of a skyscraper complex in downtown Milan. The complex consists of seven tower building, mainly used for offices and being closely built together. Casella was instructed to place the air conditioning units on the roof top of a 18 floor skyscraper, therefore a lifting height of 70 meters was needed. Their choice for the task was the LTM 1350-6.1. The weight of the single units to be lifted was announced with 12.5 t.

The main challenge – limited space

The main challenge was the limitation of space as the lift took place in the Milan city center. The 350 t crane, installed with the maximum ballast of 100 t, had to be positioned on the center of the roadway. As the road is quite narrow, the outriggers had to be positioned half on the road and half on the side walk on two different heights. During the setup and lift, the road had to be sealed off – therefore time was the second limiting factor on this job.

The new air conditioning units with their 12.5 t had to be lifted to the 63 meter high rooftop with a radius of 45 meters. Therefore the Y-guying system was needed to support the

telescopic boom with the lattice jib attached, a TYVEN configuration. The LTM 1350-6.1 is the smallest crane featuring a Y-guying system.

A challenging job for Claudio Lozza

Arriving first thing in the morning, crane operator Claudio Lozza and his colleagues were really busy to keep the timings during all the job. About eight hours of preparation and two hours with loads on the hook, the day was quite demanding for Claudio, as he explained the job: "The Y-guying system allowed us to benefit from incredible load capacities while guaranteeing reduced dimensions – this was the crucial point during this job. In a nutshell, the Liebherr LTM 1350-6.1 mobile crane is flexible, compact and powerful! Using such a crane for this type of work is really joyful for me." And Claudio is looking forward to the next jobs: "It's always challenging to operate in metropolitan areas, no matter if you are in the open field, in one of the many industrial plants or in the city center – always a question of timing, traffic and limited space. But with this extraordinary crane, handling gets easy and the work is fun."

Casella Autogrù: 60 years of proud company history

Casella Autogrù, based in Piacenza (about 60 km from Milan), a strategic location from a logistical point of view, was founded in 1960. In the early 90ties, the Villa family took over the management of Casella Autogrù, providing – with commitment, passion and determination – a decisive push towards new and even more ambitious goals: the mobile crane rental business started beside the existing activities of transportation, the assembly of prefabricated structures and the chartering of aerial platforms. The mobile crane fleet was constantly renewed and shortly after taking over the business, the first Liebherr cranes came in. Today, being in the market for 60 years, Casella Autogrù operates 31 vehicles, including cranes, electric cranes, road tractors as well as support vehicles and operates throughout Italy and Europe. The areas of application are very varied and include, among others, the construction and maintenance of infrastructure at national level, industrial handling of machinery and plants in all major production sectors.

About Liebherr-Werk Ehingen GmbH

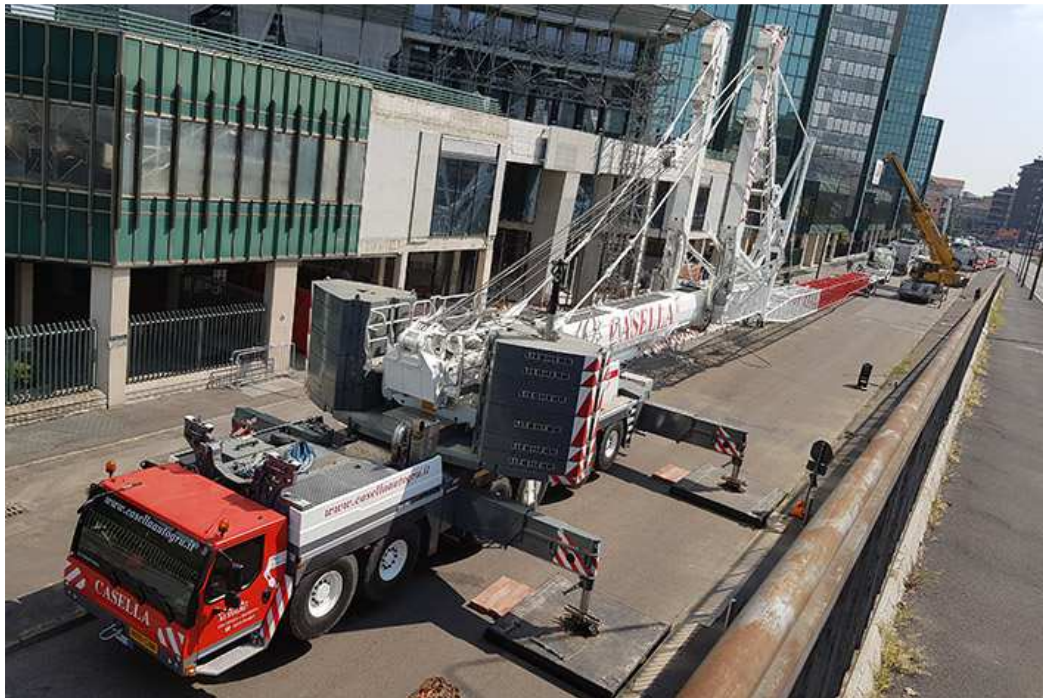
Liebherr-Werk Ehingen GmbH is a leading manufacturer of mobile and crawler cranes. Its range of mobile cranes extends from 2-axle 35 tonne cranes to heavy duty cranes with a lifting capacity of 1200 tonnes and a 9-axle chassis. Its lattice boom cranes on mobile or crawler crane chassis deliver lifting capacities of up to 3000 tonnes. With universal boom systems and extensive additional equipment, they can be seen in action on construction sites throughout the world. The Ehingen site has a workforce of 3,500. Extensive, global service guarantees the

high availability of Liebherr mobile and crawler cranes. In 2019, the Liebherr plant in Ehingen recorded a turnover of 2.1 billion euros.

About the Liebherr Group

The Liebherr Group is a family-run technology company with a widely diversified product range. The company is one of the largest manufacturers of construction machines in the world, but also supplies technically advanced, user-focused products and services in many other sectors. The group currently comprises more than 140 companies based in every continent of the world, has a workforce of over 48,000 and recorded a consolidated total turnover of more than 11.7 billion euros in 2019. Since it was founded in 1949 in Kirchdorf an der Iller in southern Germany, Liebherr's aim has been to win customers by supplying high quality solutions and to contribute to technological progress.

Photographs



liebherr-casella-ltm1350-6.1-1.jpg

Getting ready: Eight hours were needed to assemble the LTM 1350-6.1 with full ballast, Y-guying and lattice jib on the roadway.



liebherr-casella-ltm1350-6.1-2.jpg

Going into the height: The air conditioning units had to be lifted 70 meters with a 45 m radius onto the rooftop.



liebherr-casella-ltm1350-6.1-3.jpg

Limited space is a common problem in large cities such as Milan. The outriggers had to be palced half on the road, half on the sidewalk.

Contact person

Wolfgang Beringer

Marketing and Communication

Phone: +49 7391 / 502 - 3663

Email: wolfgang.beringer@liebherr.com

Published by

Liebherr-Werk Ehingen GmbH

Ehingen (Donau) / Germany

www.liebherr.com