

Press release

## **All in the head – 1,000 tonnes on an 800 tonne crane**

- LR 1800-1.0 tested with 1,000 tonne test load
- 800 tonne head section available for extremely heavy duty jobs
- 800/1000 tonne hook block can be used flexibly and economically for LR 1800-1.0 and LR 11000

**“Maximum performance is all in the head” – the fact that this saying does not just apply to sport was shown recently at the Liebherr test site in Ehingen when a 1,000 tonne test load was suspended from the hook of the LR 1800-1.0. This incredible performance was made possible by the new 800 tonne heavy duty head. A new hook block also played a major role in the test. It can hoist up to 1,000 tonnes and, in addition to the Liebherr 800 tonne crane can also be used for the 1,000 tonne LR 11000.**

Ehingen / Donau (Germany), 15 September 2020 – Liebherr has now delivered more than ten of its new 800 tonne crawler cranes to customers in Europe, North America and Asia. All of them feature the standard 650 tonne S head section and are used for heavy hoisting work in industry and for wind turbine erection jobs.

“The standard head is absolutely adequate for the vast majority of jobs. However, the LR 1800-1.0 is designed to produce its maximum lifting capacity in real-world conditions as it can hoist 800 tonnes with a 9 metre radius on a 57 metre boom. That gives it plenty of scope for real applications. That is why we built the 800 tonne head, and now we have tested it as well”, explained Jens Könneker, Product Manager Crawler Cranes at Liebherr.

For the acceptance testing procedures on crane equipment, the test loads are around 25 percent above the values in the lifting capacity table to ensure a high level of safety when the crane is actually in action. The new 800 tonne head and the new hook block to match it passed the test with flying colours with a 1,000 tonne test load. Könneker said: “The new hook block can be used on both the LR 1800-1.0 and the LR 11000. That is very important for customers who have both crane models. It enables them to use this block for both cranes

---

flexibly and economically. As a result of the higher rope pull on the LR 11000, it can hoist up to 1,000 tonnes”.

For the test hoist, the LR 1800-1.0 had been set up with 70 tonnes of central ballast, 170 tonnes of slewing platform ballast and 228 tonnes of derrick ballast as well as a 33 metre derrick boom. A ballast trailer was used for the derrick ballast. However, the test could also have been carried out with suspended ballast. The ballast trailer is also new and will be available for delivery shortly.

#### **About Liebherr-Werk Ehingen GmbH**

Liebherr-Werk Ehingen GmbH is a leading manufacturer of mobile and crawler cranes. Its range of mobile cranes extends from 2-axle 35 tonne cranes to heavy duty cranes with a lifting capacity of 1200 tonnes and a 9-axle chassis. Its lattice boom cranes on mobile or crawler crane chassis deliver lifting capacities of up to 3000 tonnes. With universal boom systems and extensive additional equipment, they can be seen in action on construction sites throughout the world. The Ehingen site has a workforce of 3,500. Extensive, global service guarantees the high availability of Liebherr mobile and crawler cranes. In 2019, the Liebherr plant in Ehingen recorded a turnover of 2.1 billion euros.

#### **About the Liebherr Group**

The Liebherr Group is a family-run technology company with a widely diversified product range. The company is one of the largest manufacturers of construction machines in the world, but also supplies technically advanced, user-focused products and services in many other sectors. The group currently comprises more than 140 companies based in every continent of the world, has a workforce of over 48,000 and recorded a consolidated total turnover of more than 11.7 billion euros in 2019. Since it was founded in 1949 in Kirchdorf an der Iller in southern Germany, Liebherr’s aim has been to win customers by supplying high quality solutions and to contribute to technological progress.

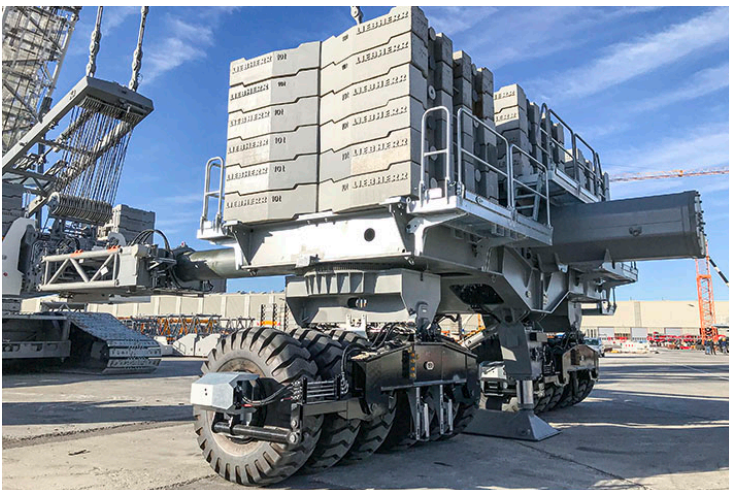
---

## Image



liebherr-lr1800-0-1-1000-tonnes-test.jpg

New heavy duty head – the LR 1800-1.0 is tested with a load of 1000 tonnes.



liebherr-lr1800-0-1-ballast-trailer.jpg

The ballast trailer of the LR 1800-1.0 will be available for delivery shortly.

---

**Contact person**

Wolfgang Beringer

Marketing and Communication

Phone: +00 7391 / 502 - 3663

Email: [wolfgang.beringer@liebherr.com](mailto:wolfgang.beringer@liebherr.com)

**Published by**

Liebherr-Werk Ehingen GmbH

Ehingen (Donau) / Germany

[www.liebherr.com](http://www.liebherr.com)