

### **Dielco Crane Service adds second Liebherr LR 1500 crawler crane for heavy duty lifting in Las Vegas**

- Nevada-based company's fleet now includes 10 Liebherr cranes
- Dielco specializes in high rise steel erection, power generation and telecommunications projects

**Liebherr USA, Co., Newport News, VA (USA) March 5, 2019 — Dielco Crane Service has added a second Liebherr LR 1500 crawler crane to its growing Liebherr fleet. The company chose the crane as the best solution for a recent project – supplying equipment for steel lifts on a multi-million dollar expansion project at a famous resort on the Las Vegas Strip.**

Dielco's new Liebherr LR 1500 crawler crane recently lifted steel trusses that were 240 feet long and 210 US-tons at the project site, which includes the construction of a new, 400,000-square-foot convention center. The LR 1500 fills Dielco's need for a dependable, large capacity crane that is easy to set up and transport.

"The ease of mobility and moving in and out of the job site enables us to be more competitive and help our customers make tight schedules," said Dielco Project Manager Bill Cunningham.

All aspects of the LR 1500 are designed for economy and simplicity. It has a lifting capacity of up to 550 US-tons, a maximum hoist height of 538 feet and a radius up to 472 feet. It is extremely compact and can be transported anywhere in the world without any restrictions.

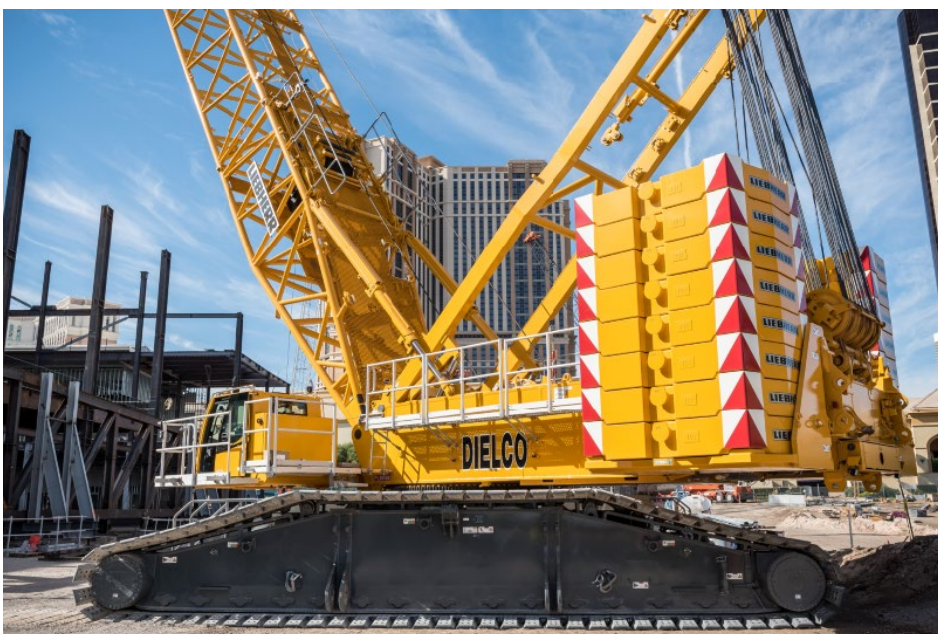
"A great advantage to using Liebherr cranes is the superior quality of the machines as well as great service, great technical solutions and their engineering support for special applications," said Dielco President Dave Dieleman.

Movements start smoothly with the LR 1500's powerful main hoist winch, which handles all lifts up to the maximum load capacity. This makes crane operation easier since there is no need for parallel winch operation for heavyweight lifts.

Dielco has more than 30 years of hands-on of industry experience. The company prides itself on providing customers excellent equipment and timely service. Dielco has a team of over 80 professionals, a fleet of 80 cranes and has completed work at most major hotels in Las Vegas. The company also has worked extensively on wind generation projects in Texas, Colorado and California.

## Images

A Dielco Liebherr LR1500 crawler crane at work



**Contact person**

Ana Cabiedes-Uranga

General Manager, Marketing

Liebherr USA, Co.

Tel: + 757 928 2503

Email: [ana.cabiedes@liebherr.com](mailto:ana.cabiedes@liebherr.com)

**Published by**

Liebherr USA, Co

Newport News, VA

[www.liebherr.com](http://www.liebherr.com)