

Liebherr Group Highlights 2015

Bulle (Switzerland), 29th January 2016 – In the past year Liebherr's product divisions and companies at home and abroad were active in a variety of different areas.

January

The new "LiUP" crane driver elevator system is awarded Gold at the Intermat construction machines exhibition in Paris, France. The Liebherr Demolition Control System (LDC) safety feature for demolition excavators is awarded Silver. Liebherr is the only manufacturer to claim two Innovation Awards.



February

The Bombardier CS300 successfully completes its maiden flight. This is the largest model in the Bombardier CSeries aircraft family. Liebherr equips the aircraft with the landing gear system and the integrated air management system.



April

Liebherr's new continental warehouse at Oberopfingen, Germany, supplies customers all around the world with spare parts for earthmoving machines. The new building has an area of 47,000 m² – as large as six football pitches. The hall features an automatic high-shelving system with more than 60,000 pallet spaces.



May

The pre-series of the new R 9200 mining excavator has been operated successfully at different locations and in various applications including a coal mine in Indonesia and an iron mine in South Africa. This new excavator of 200 tonnes is equipped with a 12.5 m³ bucket to match with mining trucks of the 100 tonnes class.



June

Liebherr-Aerospace and Rolls-Royce found the 50:50 joint venture Aerospace Transmission Technologies GmbH based at Friedrichshafen, Germany. Tony Wood, President Rolls-Royce, Aerospace and Dr. h.c. Willi Liebherr, Chairman of the Administrative Board of Liebherr-International AG, celebrate the joint venture at the Paris Air Show 2015. The joint venture will make available the production technologies for the components of the power transmission gear train of the UltraFan engine. The new engine design should be ready for operation from 2025. A single gearbox will be able to transmit the power of over 500 family cars.



June

The new LR 1500 crawler crane is presented at Customer Days in Ehingen, Germany. The crawler crane makes load capacities in the 500-tonnes category possible with dimensions and component weights that previously have been standard in the 400-tonne class. Its engine output of 350 kW is even in the range of engines for 600-tonners.



August

A 150 EC-B Flat-Top crane is working on the Zugspitze, building the new Eibsee cable car. The crane was erected with the help of a helicopter. At 2,975 m, it is (for the time being) the highest point in Germany.



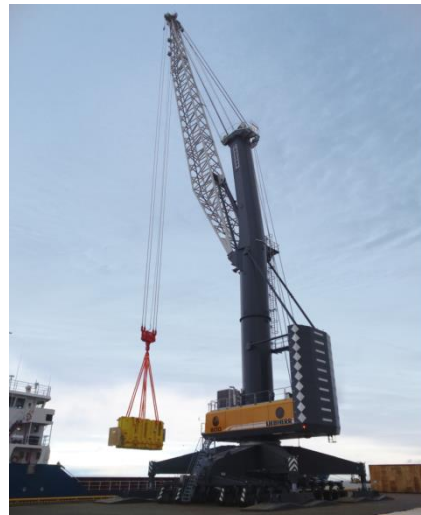
September

At the IFA in Berlin, Germany, Liebherr presents numerous innovations from the Refrigeration and Freezing division, including the new "BluPerformance" equipment line. Refrigeration and freezing units are characterised above all by the new energy efficiency class A+++/-20%, by their perfect finish down to the finest detail and by the precise touch electronics.



September

Liebherr supplies the first LHM 800 mobile harbour crane to the multipurpose Sea Cargo Complex Bronka near St. Petersburg, Russia. With a lifting capacity of 308 tonnes and 64 m outreach, the gigantic mobile harbour crane can handle up to 22 container rows. It is the largest mobile harbour crane currently available on the market.



October

Liebherr presents its new generation of XPower large wheel loaders. The wheel loaders feature a power-split drivetrain, which combines hydrostatic and mechanical drive. The wheel loaders satisfy the Stage IV / Tier 4f emissions standard and are particularly reliable and safe in their operation thanks to their powerful components.



October

At the European Table Tennis Championships in Yekaterinburg, Russia, Liebherr is not only the headline sponsor for the event, but also sponsor of the German and Austrian national teams. The teams win a total of four gold medals as well as one silver and one bronze medal.



December

Liebherr starts the construction of a 2,500 m² factory hall at its plant in Ettlingen, Germany. This will allow the centre for remanufacturing drive components – which is located there – to be expanded. Liebherr expects demand to increase for overhauling customer components for construction machines, mining equipment, mobile cranes and maritime cranes.



Captions

liebherr-crawler-crane-lr1500.jpg

New LR 1500 crawler crane

liebherr-domestic-appliances-blu-performance.jpg

The new "BluPerformance" equipment line at the IFA 2015

liebherr-ettlingen-cut-of-the-spade.jpg

Groundbreaking ceremony in Ettlingen, Germany

liebherr-european-championship-table-tennis-2015.jpg

European Table Tennis Championships in Yekaterinburg, Russia

liebherr-first-flight-cs300-copyright-bombardier.jpg

Bombardier CS300 (Copyright: Bombardier)

liebherr-flat-top-crane-150ec-b-zugspitze-02.jpg

150 EC-B Flat-Top crane on the Zugspitze, Germany

liebherr-intermat-2015.jpg

Liebherr at the Intermat 2015

liebherr-joint-venture-aerospace-rolls-royce-willi-liebherr-tony-wood.jpg

Dr. h.c. Willi Liebherr, Chairman of the Administrative Board of Liebherr-International AG and Tony Wood, President Rolls-Royce, Aerospace

liebherr-l566-xpower-rehandling-material.jpg

New generation of XPower large wheel loaders

liebherr-lhm-800-mobile-harbour-crane-bronka.jpg

LHM 800 mobile harbour crane

liebherr-logistics-centre-oberopfingen.jpg

New continental warehouse at Oberopfingen, Germany

liebherr-mining-r9200.jpg

The pre-series of the new R 9200 mining excavator

Contact partners

Kristian Küppers

Group Spokesman

Tel.: +49 7351 41 - 2708

E-mail: kristian.kueppers@liebherr.com

Published by

Liebherr-International AG

Bulle / Switzerland

www.liebherr.com