

Liebherr Specialist Machines

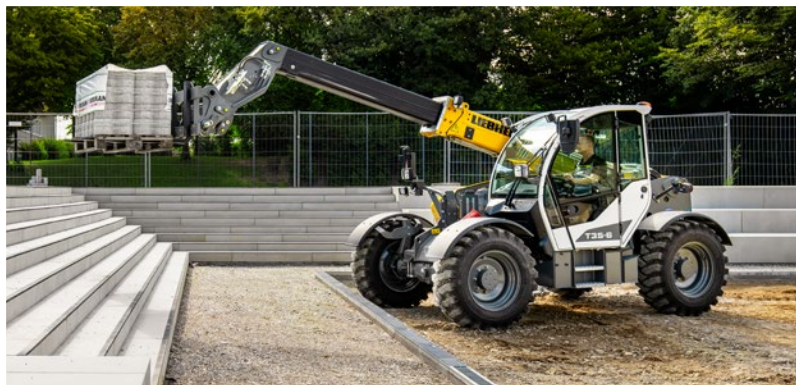
# for Horticultural and Landscape Construction



# LIEBHERR

# Liebherr Specialist Machines for Horticultural and Landscape Construction





For machines used in horticultural and landscape construction, the bottom line is ensuring high mobility and power output under tight maneuvering conditions. Earthmoving machines are therefore ideally compact and agile and also distinguish themselves by versatile and quickly exchangeable attachments, limited load on the bearing surface as well as low-emission drive units. The compact machines of the Liebherr range of earthmoving machinery are perfect for such special uses.

#### **Hydraulic Excavators**

#### **Wheel Loaders and Telescopic Wheel Loader**

#### **Crawler Tractors and Crawler Loaders**

#### **Telescopic Handlers**

# Hydraulic Excavators



**Performance**

Power allied to precision means Liebherr excavators are ideal for garden and landscape projects. They feature a combination of manoeuvrability, stability and visibility and, using a range of configurations and attachments, can be tailored exactly to application requirements.

**Economy**

The 4-cylinder construction machinery engines satisfy latest Stage V emissions regulations that have resulted in further reductions in diesel particulate and NOx emissions – down to almost zero. Liebherr achieves that using an innovative exhaust system with a diesel oxidation catalytic converter and a particulate filter. The in-line engines develop their power via high torque at low engine speeds and for our customers, that translates into big savings on fuel consumption.

**Reliability**

The extensive production knowledge and experience of Liebherr's is evident in its ability to successfully manufacture complete system solutions. Key components such as steel constructions, electronic components, slewing ring, slewing drive and hydraulic cylinders are all developed and manufactured in-house. That guarantees the highest possible quality and allows the components to be coordinated perfectly.

**Comfort**

The Liebherr cab offers plenty of room with all-round visibility provided by large window areas and narrow bars. The ergonomics of the working environment mean that all gear levers and control panels are in easy reach while an intuitive touchscreen enables machine parameters to be easily set. Automatic air conditioning keeps the operator alert throughout long shifts.

**Maintainability**

Liebherr machines are designed for easy servicing and low maintenance costs. Large service doors open wide for ground-level access to all daily maintenance points. Our own hydraulic oils ensure longer change intervals – 6,000 hours of service or more. And instead of defined change intervals, an oil analysis every 1,000 operating hours/one year determines when a change is needed.

# Overview of Hydraulic Excavators

## Innovative Machine Concept for Maximum Power and Precision

- Robust construction machinery engines for continuous use at full load
- Coordinated hydraulic system provides sensitive control

## Top Class Cab for Enhanced Working Quality

- Spacious cab for long working days
- Excellent visibility
- Operator's seat with extensive features
- Large touchscreen with intuitive menu
- Automatic air conditioning
- Sliding two-piece windscreen

## Easy Maintenance, Qualified Service, Fast Response Times

- Short maintenance times
- Automatic central lubrication for uppercarriage, slewing ring and attachments
- LIDAT – Liebherr data transfer system manages and controls the entire fleet
- Advice: application-orientated sales support, service agreements, cost-effective repair alternatives, etc.
- 24-hour delivery





### **Maximum Flexibility and Efficiency**

- Short rear swivel radius
- All-wheel or crab steering for better manoeuvrability
- Swivelling adjustable boom
- Fully automatic LIKUFIX quick coupling system
- Large selection of attachments and coordination of bucket shape and tooth design to match application

### **Strong Undercarriage Concept for Greater Stability and Robustness**

- Excellent weight distribution for stability, greater lifting power and operator comfort
- Travel drive integrated in undercarriage
- Oscillating axle for stability in all positions
- Divided blade aligns the excavator on uneven terrain
- Prop-up grading blade requires no maintenance
- Piston rod guard for support cylinder

## Examples of Use and Technical Data



		<b>A 910 Compact Litronic</b>	<b>A 912 Compact Litronic</b>	<b>A 913 Compact Litronic</b>	<b>A 914 Compact Litronic</b>
Engine output	kW/HP	85/116	90/122	95/129	105/143
Operating Weight	t	12.1–13.1	13.0–14.2	13.9–16.0	15.2–17.5
Bucket Capacity	m <sup>3</sup>	0.15–0.48	0.15–0.48	0.17–0.87	0.17–0.87
Grapple capacity	m <sup>3</sup>	0.10–0.27	0.10–0.27	0.10–0.34	0.17–0.80
Tail radius	mm	1,675	1,675	1,700	1,750

		<b>R 914 Compact Litronic</b>	<b>A 914 Litronic</b>	<b>A 916 Compact Litronic</b>	<b>A 916 Litronic</b>
Engine output	kW/HP	90/122	105/143	110/150	115/156
Operating Weight	t	14.9–17.8	14.9–17.2	16.0–18.3	16.4–18.4
Bucket Capacity	m <sup>3</sup>	0.32–0.80	0.17–0.87	0.17–0.87	0.17–1.05
Grapple capacity	m <sup>3</sup>	0.17–0.40	0.17–0.80	0.17–0.80	0.17–0.80
Tail radius	mm	1,550	-	1,800	-

		<b>A 918 Compact Litronic</b>	<b>R 918 Litronic</b>	<b>R 920 Compact Litronic</b>
Engine output	kW/HP	115/156	120/163	110/150
Operating Weight	t	17.5–19.6	19.5–22.6	18.7–21.9
Bucket Capacity	m <sup>3</sup>	0.17–1.05	0.55–1.15	0.30–0.95
Grapple capacity	m <sup>3</sup>	0.17–0.80	0.17–0.80	0.17–0.40
Tail radius	mm	1,850	-	1,850





# Wheel Loaders and Telescopic Wheel Loader



**Performance**

The high-performance Liebherr wheel loaders L 506 Compact – L 518 Stereo and the new L 509 Tele impress in horticultural and landscape construction due to their versatile and all-purpose use. The unique steering system of the Stereoloaders and the Telescopic wheel loader and the compact design of the Compact Loaders make the wheel loaders extremely agile and versatile. This ensures maximum manoeuvrability and, at the same time, maximum stability in all site situations even in confined spaces. This guarantees precise and safe working and improved efficiency.

**Economy**

The compact design and low operating weight of the Compact Loaders, Stereoloaders and the Telescopic wheel loader guarantee the safe transportation of high payloads and thus an excellent handling capacity. Thanks to their broad range of quick interchangeable attachments, the machines can be optimally configured for operations in horticultural and landscape construction. The hydraulic quick hitch allows quick and efficient attachment changeover. The specially designed telescopic lift arm enables high manipulation heights and long reach. The L 509 Tele is therefore particularly suitable for loading trucks and containers as well as for lifting and stacking loading material. This widens the machine's areas of use and therefore increases its productivity.

**Reliability**

The use of ideally matched components and the stable machine design make the machines especially efficient and guarantee a long life. Reliable operations are possible in even the toughest conditions. The customer therefore has the machine power available when it is urgently required.

**Comfort**

The extremely comfortable cab allows the operator to concentrate on accurate operation without fatigue, which once again means more efficiency and productivity. Well laid out and ergonomically arranged controls guarantee simple handling. The Liebherr control lever allows precise and sensitive control of the machine. The generous glass surfaces of the cab offer exceptional all-round visibility. Moreover, the design of the engine hood which has been optimised for viewing as well as the optional rear area monitoring camera for L 507 Stereo – L 518 Stereo and L 509 Tele ensure ideal visibility. The oscillating centre pivot compensates for unevenness on the ground and provides excellent stability and maximum ride comfort. Even in constricted spaces, maximum safety for people, the machine and the load is guaranteed, while at the same time increasing productivity.

**Maintainability**

The most important points for daily maintenance can be reached safely and conveniently from the ground. The entire engine compartment is accessible via just one enclosure. Quick and safe checks save time and money.

# Wheel Loaders L 506 Compact – L 508 Compact Overview

## Maximum Operator Comfort for Greater Productivity

- Automatic central lubrication system (optional)
- Liebherr control lever
- Air conditioning system (optional)
- Oscillating centre pivot
- Ride control (optional)
- Broad access ladder with anti-slip steps

## Highest Level of Performance

- Z-bar linkage with parallel guidance in fork mode
- Hydraulic quick hitch
- 1st hydraulic additional function (optional)
- Comprehensive range of special equipment for horticultural and landscape construction (optional)

## Short Service Times for Greater Productivity

- LiDAT – Liebherr Data Transfer System (optional)





#### **Productive and Safe Working**

- Roomy, soundproof ROPS/FOPS cab
- Generous glass surfaces of the operator's cab
- Additional working lights, front/rear (optional)
- Back-up alarm acoustical/visual (optional)

#### **Highest Level of Performance**

- Compact and low design
- Clearance height below 2.5 meters
- Mounting panel at rear, for equipment with 3-point attachment (optional)
- Trailer coupling (optional)

#### **Robustness and Quality for Durable Machines**

- Water-cooled diesel engine
- Special tyres for horticultural and landscape construction (optional)

# Wheel Loaders L 507 Stereo – L 518 Stereo Overview

## Maximum Operator Comfort for Greater Productivity

- Automatic central lubrication system (optional)
- Liebherr control lever moving with operator's seat
- Air conditioning system (optional)
- Oscillating centre pivot with damping elements
- Stereo steering
- Ride control (optional)
- Broad access ladder with anti-slip steps and sturdy handrails

## Highest Level of Performance

- Powerful Z-bar linkage with optimised parallel guidance in fork mode
- Hydraulic quick hitch (L 507 – L 509 standard / L 514 – L 518 optional)
- Hydraulic quick hitch LIKUFIX (L 507 – L 509 optional)
- 1st and 2nd electro-hydraulic, proportional additional function (optional)
- High-Flow hydraulic (L 507 – L 509 optional)
- Speeder version (L 507 – L 509 optional)
- Comprehensive range of special equipment for horticultural and landscape construction (optional)





#### **Productive and Safe Working**

- Roomy, soundproof ROPS/FOPS cab
- Generous glass surfaces of the operator's cab
- 180° fold-out window right
- Additional working lights, front/rear (optional)
- Back-up alarm acoustical/visual (optional)
- Rear space monitoring with camera (optional)

#### **Short Service Times for Greater Productivity**

- LiDAT – Liebherr Data Transfer System (optional)
- Radiator easy to maintain and controlled cooling
- Reversible fan drive (optional)
- Air pre-cleaner (optional)

#### **Highest Level of Performance**

- Mounting panel at rear, for equipment with 3-point attachment (optional)
- Trailer coupling (optional)

#### **Robustness and Quality for Durable Machines**

- Water-cooled diesel engine and controlled cooling
- Special tyres for horticultural and landscape construction (optional)

# Telescopic Wheel Loader L 509 Tele Overview

## Maximum Operator Comfort for Greater Productivity

- Automatic central lubrication system (optional)
- Liebherr control lever moving with operator's seat
- Air conditioning system (optional)
- Oscillating centre pivot with damping elements
- Stereo steering
- Ride control (optional)
- Stroke limit damping (optional)
- Broad access ladder with anti-slip steps and sturdy handrails
- Option package "Tele comfort operation":
  - Automatic bucket return programmable
  - Automatic lift arm position and lowering programmable
  - Visualisation of the equipment position

## Highest Level of Performance

- Telescopic lift arm with powerful Z-bar linkage
- Optimised parallel guidance in fork mode throughout the entire lifting range
- Intelligent overload warning system
- Hydraulic quick hitch
- 1st and 2nd electro-hydraulic, proportional additional function (optional)
- High-Flow hydraulic (optional)
- Speeder (38 km/h)
- Comprehensive range of special equipment for horticultural and landscape construction (optional)







#### **Productive and Safe Working**

- Roomy, soundproof ROPS/FOPS cab
- Generous glass surfaces of the operator's cab
- 180° fold-out window right
- Roof window
- Additional working lights, front/rear (optional)
- Back-up alarm acoustical/visual (optional)
- Rear space monitoring with camera (optional)

#### **Short Service Times for Greater Productivity**

- LiDAT – Liebherr Data Transfer System (optional)
- Radiator easy to maintain and controlled cooling
- Reversible fan drive (optional)
- Air pre-cleaner (optional)

#### **Highest Level of Performance**

- Mounting panel at rear, for equipment with 3-point attachment (optional)
- Trailer coupling (optional)

#### **Robustness and Quality for Durable Machines**

- Water-cooled diesel engine and controlled cooling
- Special tyres for horticultural and landscape construction (optional)

## Examples of Use and Technical Data



		<b>L 506 Compact</b>	<b>L 507 Stereo</b>	<b>L 508 Compact</b>
Tipping load	kg	3,100–3,450	3,240–3,750	3,450–3,850
Bucket capacity	m <sup>3</sup>	0.7–0.8	0.8–1.6	0.9–1.0
Operating weight	kg	5,160–5,490	5,550–5,835	5,670–5,920
Engine output	kW/HP	46/63	50/68	50/68
Emission stage	Stage	V	V	V

		<b>L 509 Stereo</b>	<b>L 514 Stereo</b>	<b>L 518 Stereo</b>
Tipping load	kg	3,885–4,430	4,075–5,750	5,025–6,550
Bucket capacity	m <sup>3</sup>	1.1–2.0	1.4–3.5	1.5–4.0
Operating weight	kg	6,390–6,660	8,860–9,985	9,190–10,445
Engine output	kW/HP	54/73	76/103	76/103
Emission stage	Stage	V	V	V

		<b>L 509 Tele</b>
Tipping load	kg	3,600–3,800
Bucket capacity	m <sup>3</sup>	0.9–2.0
Operating weight	kg	7,000–7,150
Max. payload for fork carrier and fork	kg	2,300 <sup>1)</sup>
Max. lifting height for fork carrier and fork	mm	4,800
Engine output	kW/HP	54/73
Emission stage	Stage	V

<sup>1)</sup> Recommended payload for smooth surfaces = 80 % of tipping load, articulated – according to 474-3



## Crawler Tractors and Crawler Loaders



## Performance

The hydrostatic drive on Liebherr's crawler loaders always applies full power to both chains with no interruptions. That gives the machines traction on any surface and on any gradient as well as maximum manoeuvrability, even turning at a standstill. Both the travel drive and the bucket or blade can be controlled sensitively using the joystick. Liebherr's new driver assistance systems increase both speed and quality of grading performance on three levels – from free terrain design with Free Grade, to 2D surface creation with Definition Grade, to automated 3D modelling with 3D Grade.

## Reliability

Developed for the very harshest conditions, Liebherr diesel engines deliver maximum reliability and service life with their robust design and low rated speed. The main and roller frames have a time-tested box design. This delivers high rigidity and excellent absorption of the forces. Components exposed to particularly high stresses are made of cast steel.

## Comfort

The generously sized cab provides an ideal environment for relaxed, safe, productive working. All the instruments and control elements have a clear, ergonomic design and are within easy reach. A clear view of the equipment and perfect all-round visibility enable the operator to concentrate on his work at all times. With a series of individual settings, he can tailor the machines perfectly to how he works. Thanks to the effective insulation and the modern, quiet diesel engine, the sound values in Liebherr crawler loaders are well below the statutory specifications. The pressurised cab keeps the operator's workplace free of dust from the environment.

## Economy

The Liebherr LR 626 and LR 636 crawler loaders are universal machines for garden and landscape work. Fitted with a standard or 4-in-1 bottom dump bucket, they can be used to loosen, clear, excavate, grade and load soil as well as for pushing and grading. The load-independent flow distribution of generation 6 allows even more harmonious simultaneous movements of the front equipment, thus reducing the time required for work cycles. Particularly on soil with a low load capacity, crawler loaders achieve very high handling capacities with minimum ground pressure. For producing precise grading or modelling three-dimensional surfaces, crawler loaders can install material particularly quickly, with centimetre precision and therefore at low cost. The extra long undercarriages and the perfectly coordinated centre of gravity deliver outstanding grading properties. That makes the Liebherr PR 716 and PR 726 crawler loaders the ideal machines for the construction of sports and leisure facilities. The new standard eco mode for lightweight and medium jobs enables the fuel consumption of both machine models to be reduced even further.

## Maintainability

All the points which the operator inspects during his daily routine checks are located on one side of the engine with easy access. The standard hydraulic tipping cab also provides easy access to the components. This means that service work can be completed quickly and efficiently. Competent advice is a matter of course at Liebherr. Experienced expert staff can provide decision-making tools to suit your specific requirements – practical sales advice, service agreements, low-cost repair alternatives, genuine part management as well as remote data transfer for job planning and fleet management.

		LR 626 Litronic	LR 636 G8	PR 716 G8	PR 726 G8
Engine output	kW/HP	105/143	135/187	97/132	125/170
Operating weight	t	16.1–18.6	21.7–23.0	13.3–15.8	17.5–20.8
Bucket capacity, Blade capacity	m <sup>3</sup>	1.50–1.80	1.90–4.60	2.92–3.30	3.33–3.87

# Telescopic Handlers



## Performance

The tried-and-tested hydrostatic travel drive with infinitely variable acceleration without shifting gear and good manoeuvrability guarantees quick work processes even in limited spaces. The construction machine can be used universally and is solid from the ground up. It is designed for maximum performance in various applications. High load capacities, intuitive operation and high performance components allow the driver to complete his work quickly and reliably.

## Reliability

Robust and reliable: as characterised by Liebherr telescopic handlers. Advanced technology with high-quality materials and build quality guarantee maximum availability. A high level of utilisation and value is guaranteed in the long term.

## Comfort

The cab of the telescopic handler from Liebherr is an ideal workplace. It provides an excellent all-around view, has a spacious interior, provides a safe working environment, and its ergonomic controls are ideal for relaxed and productive operation.

## Economy

The Liebherr telescopic handlers are all-rounders that will complement your existing machine fleet and further increase its efficiency. Many different optional attachments allow universal use and increased utilisation of the machines. Top performance, low fuel consumption and minimum maintenance guarantee economy throughout the service life of the machine.

## Maintainability

At Liebherr, superior service is more than a promise, it is a guarantee to every customer. Several production facilities and an extensive service network for construction equipment means close proximity, efficient structures, and fast service reaction times.

		<b>T 35-6 or T 35-6s</b>	<b>T 32-7 or T 32-7s</b>	<b>T 36-7 or T 36-7s</b>
Emission stage	Stage	V or IIIA	V or IIIA	V or IIIA
Engine output	kW/HP	100/136*	100/136*	100/136*
Max. lift capacity	kg	3,500	3,200	3,600
Max. lift height	m	6.13	6.93	6.93
Operating Weight	kg	7,320	7,280	7,310

		<b>T 41-7 or T 41-7s</b>	<b>T 33-10 or T 33-10s</b>
Emission stage	Stage	V or IIIA	V or IIIA
Engine output	kW/HP	100/136*	100/136*
Max. lift capacity	kg	4,100	3,300
Max. lift height	m	6.93	9.75
Operating Weight	kg	7,460	8,050

\* Standard for s-models

# Telescopic Handlers Overview

## Adapted Attachment Tools and Quick Change Systems for Maximum Productivity

- Four different quick change systems are available to choose from
- Extensive range of attachment tools

## Powerful Hydraulic System and Wide Range of Options

- The s telescopic loaders feature a load sensing pump with a LUDV control block. This not only means significantly faster work cycles, but also simultaneous movements
- A hydraulic working circuit is fitted as standard on all models
- An additional working circuit, including socket, is available as an option
- A high flow line is also available for tools with a very high oil requirement
- Automatic reversible fan for blowing out the radiator / engine compartment automatically
- Radiator guard with fine mesh great to prevent the penetration of fine wood chips into the radiator chamber







### **Comfort and Good Visibility are Essential for a Telescopic Loader**

- The multi-adjustable, suspended operator's seat with backrest extension can be adjusted to suit the individual driver
- The steering column swivels by foot release as standard into the appropriate position. It can also be adjusted in height as an option
- The innovative safety design of the roof window provides a perfect view of the load whilst also providing safety for the operator
- The display unit is at the front right, perfectly in the operator's field of vision

### **Infinitely Variable Travel Drive and Excellent Manoeuvrability**

- The infinite variation of the speed means the vehicle can be driven without changing gear – absolutely smoothly
- The engine speed and maximum travel speed can be adjusted with ease using the optional manual control package.

# As Diverse as Landscapes and Gardens

Our Services are Perfect for the Challenges you Face Every Day



## **Saving Time – for Experts who Face the Challenges Themselves**

Hand in hand to find the perfect solution. Do you want to maintain and service your machines yourself? Do you want to order the spare part you require quickly and flexibly regardless of your location and the time and be certain that you have selected the correct part?

The documentation available online and the spare parts shop in MyLiebherr enable you to access all the information you require with just a few clicks. Use our sophisticated logistics for fast deliveries of the parts you require, all in genuine quality of course. That will enable you to work efficiently. And if you're not sure what to do next, our experts are just a phone call away.

## **Transparency – Your Payment Professionals have Full Details of Availability, Costs and Much More at All Times**

Modular maintenance packages and Reman components to suit your company and budget. Are figures and the information they convey your strong point? Do you want to keep your current investments under review at all times and ideally be able to calculate in advance how much using the machine will cost and know all about its availability values?

Liebherr's modular CarePacks are tailored to your needs to show you in advance precisely what costs you can expect to ensure that your machine will continue to perform at its best in the future. For older machines, our Reman range delivers a smart, low cost solution for you.



For further information, services and contact details, go to:

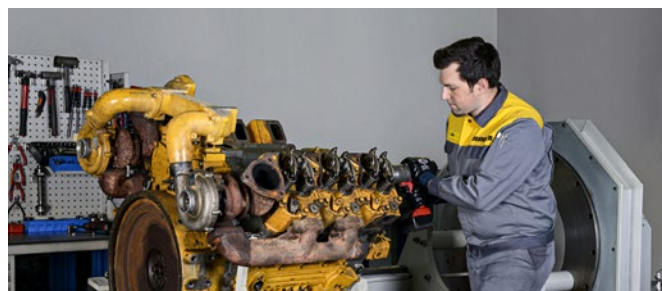
# Reliability and Support – For Decision-Makers and Advance Planning

You are not just interested in short term success, you want to be successful in the long term. Do you regard success not just as turnover, but also satisfied customers and helping to protect resources?

Our dense service network delivers consistency and a basis for planning, today and in the future.

If necessary, our experts are available for you 24/7. Our genuine parts and service experts able you to ensure that your machines retain their value. Our Reman range and a range of lubricants enable you to be successful at low cost whilst also protecting valuable resources.

## Our Services for you at a Glance:



### A Strong Partner

The safe feeling of having a strong partner by your side. Our dense service network means that our service experts are always close at hand. It is important to us that you always have a personal contact because when you need assistance, it's good to know that it's always available.

### Reman Range

The same performance and quality as a new part whilst reducing costs – that is what the replacement parts in our Reman range deliver. A wide range of components is available every day. An ideal solution, particularly for older machines, and at the same time you are helping to protect valuable resources by reusing parts.



### MyLiebherr Portal

In the workshop, on the road or even at the weekend at home, the MyLiebherr portal provides you with the latest machine documentation and spare parts catalogue whenever and wherever you need them. Order the items conveniently and easily using the online shop.

### Lubricants

When designing landscapes and gardens, one objective is to protect nature. Our portfolio of lubricants includes a series of products which enable you to actively help protect resources, including oils with longer change intervals or which are not harmful to the environment. One side-effect of these products is that they can also protect your wallet.

### CarePacks

Our modular CarePacks can provide you with tailored packages of services at a fixed charge. That leaves you to concentrate on your work.

# The Liebherr Group of Companies



## Wide Product Range

The Liebherr Group is one of the largest construction equipment manufacturers in the world. Liebherr's high-value products and services enjoy a high reputation in many other fields. The wide range includes domestic appliances, aerospace and transportation systems, machine tools and maritime cranes.

## Exceptional Customer Benefit

Every product line provides a complete range of models in many different versions. With both their technical excellence and acknowledged quality, Liebherr products offer a maximum of customer benefits in practical applications.

## State-of-the-art Technology

To provide consistent, top quality products, Liebherr attaches great importance to each product area, its components and core technologies. Important modules and components are developed and manufactured in-house, for instance the entire drive and control technology for construction equipment.

## Worldwide and Independent

Hans Liebherr founded the Liebherr family company in 1949. Since then, the family business has steadily grown to a group of more than 140 companies with nearly 48,000 employees located on all continents. The corporate headquarters of the Group is Liebherr-International AG in Bulle, Switzerland. The Liebherr family is the sole owner of the company.

[www.liebherr.com](http://www.liebherr.com)

**Liebherr-Hydraulikbagger GmbH**  
Liebherrstraße 12, D-88457 Kirchdorf/Iller  
☎ +49 7354 80-0, Fax +49 7354 80-7294  
[www.liebherr.com](http://www.liebherr.com)  
E-Mail: [info.lhb@liebherr.com](mailto:info.lhb@liebherr.com)  
[www.facebook.com/LiebherrConstruction](https://www.facebook.com/LiebherrConstruction)

**Liebherr-France SAS**  
2 avenue Joseph Rey, B.P. 90287,  
FR-68005 Colmar Cedex  
☎ +33 3 89 21 30 30, Fax +33 3 89 21 37 93  
[www.liebherr.com](http://www.liebherr.com)  
E-Mail: [info.lfr@liebherr.com](mailto:info.lfr@liebherr.com)  
[www.facebook.com/LiebherrConstruction](https://www.facebook.com/LiebherrConstruction)

**Liebherr-Werk Bischofshofen GmbH**  
Postfach 49, A-5500 Bischofshofen  
☎ +43 50809 1-0, Fax +43 50809 11385  
[www.liebherr.com](http://www.liebherr.com),  
E-Mail: [info.lbh@liebherr.com](mailto:info.lbh@liebherr.com)  
[www.facebook.com/LiebherrConstruction](https://www.facebook.com/LiebherrConstruction)

**Liebherr-Werk Telfs GmbH**  
Hans Liebherr-Straße 35, A-6410 Telfs  
☎ +43 50809 6-100, Fax +43 50809 6-7772  
[www.liebherr.com](http://www.liebherr.com),  
E-Mail: [lwt.marketing@liebherr.com](mailto:lwt.marketing@liebherr.com)  
[www.facebook.com/LiebherrConstruction](https://www.facebook.com/LiebherrConstruction)