

# Safety retrofit solutions from Liebherr

With Liebherr safety retrofits, you keep your device to the current and correspondingly highest possible safety standard for the benefit of your employees and machines.

Preventive retrofit solution for existing devices corresponds to the **DIN standard EN ISO 12609 / EU machinery directive 2006/42 / EC**. The DIN standard - EN ISO 12609 specifies requirements for the safety of truck mixers. The safety retrofit solutions essentially relate to five areas:

- Rear area surveillance
- Fall protection on the platform
- Guardrail protection
- work lighting
- Step on the underrun protection

# So that your Liebherr one Liebherr stays

Get Your  
Contact



Subject to changes

**Liebherr-Mischtechnik GmbH**  
Postfach 145  
88423 Bad Schussenried, Germany  
+49 7583 9 49-800  
[www.liebherr.com](http://www.liebherr.com)  
[www.MyLiebherr.com](http://www.MyLiebherr.com)

Subject to changes  
Printed in Germany LMT-8203 001 20-12-21\_enGB

# Simple retrofit

Safety for truck mixers

# LIEBHERR

Concrete Technology



## Rear area surveillance

This is implemented in the form of a rear view camera, like her can be ordered ex works. We offer you the conversion kit:

**Retrofit set: 848,- €**

for all truck mixers of generations 4 & 5

## Work lights

Due to the change in the standard, the installation of at least one worklight as mandatory, to increase safety in the rear work area guarantee.

Retrofit headlight package - installation is standard below the ladder platform.

**Generation 05: 109,- €**

Restriction: without additional cable set for vehicles with radio remote control pre-installation but without remote control

**Generations 04 & 05: 159,- €**

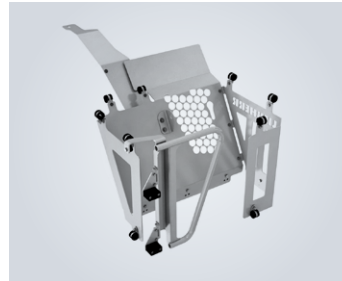
Retrofit set including cable set suitable for all generations



Working lights on the left and reversing camera on the right

## Fall protection and cladding on the ladder platform

The standardization prescribes a self-closing barrier / fall protection in which the handrail of the door is all around at the same height as the handrail of the ladder platform.



The additional cladding of the ladder platform is intended to increase safety when working on the ladder platform. The cladding must be attached on all sides, so that the operating personnel can climb onto the cross braces and the associated dangers is prevented.



**Generation 04: 665,- €**

Retrofit set for ascent with folding ladder or extension ladder version

**Generation 05: 650,- €**

## Step on the underrun protection

The underrun protection must be designed with at least one step, optionally with two steps (shown with one step in the following figure).

**Retrofit step: 62,- €**

Can be assembled on both sides, set includes a step



Scan the QR code, enter the post code, your nearest service partner will be happy to advise you