

# Series-Production Range according to ISO 6022

## Request Data

### General Information

Request Date:	Telephone:
Company:	E-Mail:
Contact Person:	
Road:	Required Quantity:
Postcode, Location:	Batch Size:
Country:	Requested Delivery Date:

### Dimensions [mm]

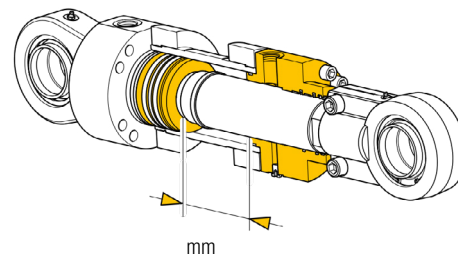
Piston-Ø	Rod-Ø	Piston-Ø	Rod-Ø
63	40	180	110
	45		125
80	50	200	125
	56		140
100	63	220	140
	70		160
125	80	250	160
	90		180
140	90	280	180
	100		200
160	100	320	200
	110		220

### Piston Rod Coating

Chrome Coating 25µm (± 5µm)

Double Chrome Coating with 96 h AASS Rating 10

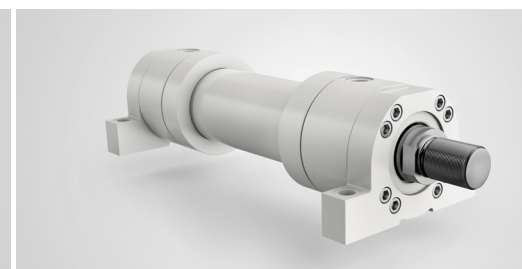
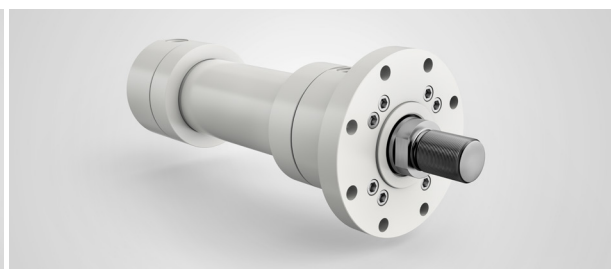
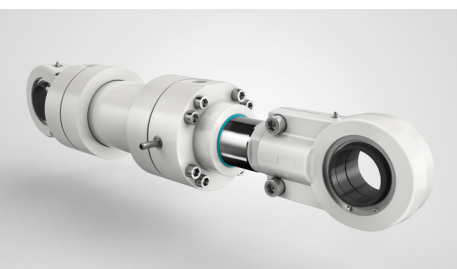
### Stroke



### Painting and Coating

Primed (Standard)

Painted at the customer's request (Liebherr Grey)



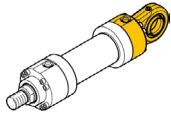
# Series-Production Range according to ISO 6022

## Options and Sensor Technology

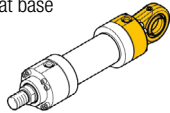
### 1. Mounting Types\*

\*exact measurements are in the **Product Brochure**.

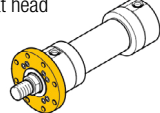
MP3  
Bushing at base



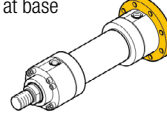
MP5  
Spherical Bearing at base



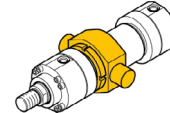
MF3  
Round Flange at head



MF4  
Round Flange at base

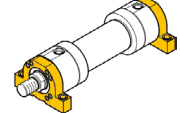


MT4  
Trunnion



Position of Trunnion  
L30= mm

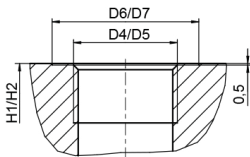
MS2  
Foot Mounting



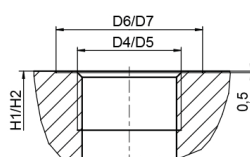
### 2. Oil Connections\*

\*exact measurements are in the **Product Brochure**.

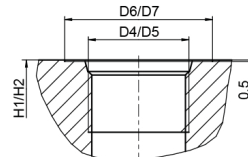
DIN EN ISO 1179-1  
(BSPP)



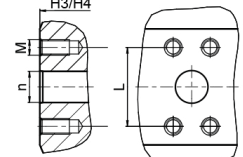
DIN EN ISO 9974-1  
(metric)



SAE J1926  
(UNF-ISO 11926-1)



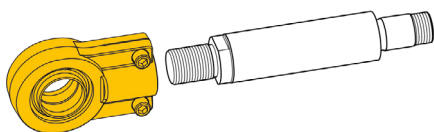
DIN ISO 6162-2  
(SAE 6000 PSI)



Control Block Assembly

### 3. Equipment Options – Piston and Piston Rod

#### 3.1 Piston Rod Head



Premounted  
Swivel Head

#### 3.2 End of Stroke Cushioning

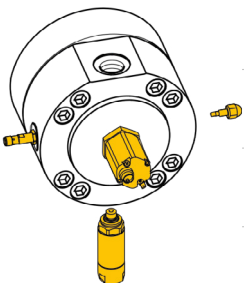


Piston Side

Rod Side

### 4. Equipment Options – Sensor Technology\*

\*positions defined as standard, modifications on customer's request



Proximity Switches	Piston Side
	Rod Side
Pressure Sensor	Piston Side
	Rod Side
Measuring Coupling acc. to ISO 15171-2	Piston Side
	Rod Side
Position Transducer**	

\*\*only mountable on the piston side

**For further questions, please contact us!**

Please return completed form to:

**Liebherr-Components AG**

P.O. Box 222, CH-5415 Nussbaumen/AG

+41 56 296 43 00, Fax +41 56 296 43 01

components.liebherr.com, E-Mail: components@liebherr.com