

Series-Production Range according to ISO 6022

Request Data

General Information

Request Date:	Telephone:		
Company:	E-Mail:		
Contact Person:	Appliaction:		
Road:	Quantity Required:	Prototype Quantity:	Series Quantity:
Postcode, Location:	Lot size:		
Country:	Requested Delivery Date:	Prototype Quantity:	Series Quantity:

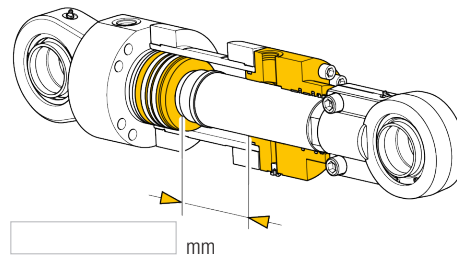
Dimensions [mm]

Piston-Ø	Rod-Ø	Piston-Ø	Rod-Ø
<input type="checkbox"/> 63	<input type="checkbox"/> 40	<input type="checkbox"/> 180	<input type="checkbox"/> 110
	<input type="checkbox"/> 45		<input type="checkbox"/> 125
<input type="checkbox"/> 80	<input type="checkbox"/> 50	<input type="checkbox"/> 200	<input type="checkbox"/> 125
	<input type="checkbox"/> 56		<input type="checkbox"/> 140
<input type="checkbox"/> 100	<input type="checkbox"/> 63	<input type="checkbox"/> 220	<input type="checkbox"/> 140
	<input type="checkbox"/> 70		<input type="checkbox"/> 160
<input type="checkbox"/> 125	<input type="checkbox"/> 80	<input type="checkbox"/> 250	<input type="checkbox"/> 160
	<input type="checkbox"/> 90		<input type="checkbox"/> 180
<input type="checkbox"/> 140	<input type="checkbox"/> 90	<input type="checkbox"/> 280	<input type="checkbox"/> 180
	<input type="checkbox"/> 100		<input type="checkbox"/> 200
<input type="checkbox"/> 160	<input type="checkbox"/> 100	<input type="checkbox"/> 320	<input type="checkbox"/> 200
	<input type="checkbox"/> 110		<input type="checkbox"/> 220

Piston Rod Coating

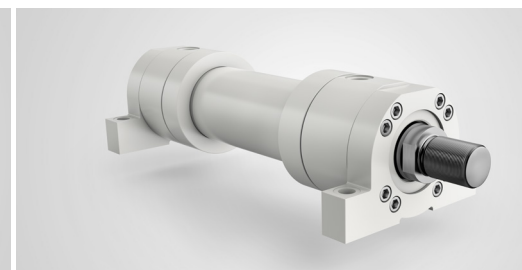
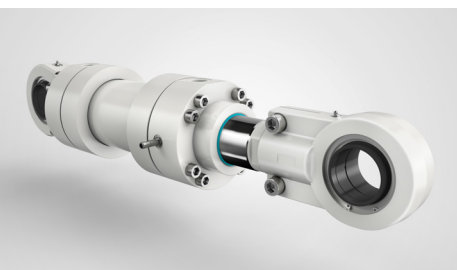
- Chrome Coating 25µm (± 5µm)
- Double Chrome Coating with 96 h AASS Rating 10

Stroke



Painting and Coating

- Primed (Standard)
- Painted (Liebherr Grey)



Series-Production Range according to ISO 6022

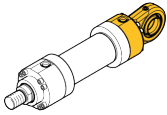
Options and Sensor Technology

1. Mounting Types*

*exact measurements are in the **Product Brochure**

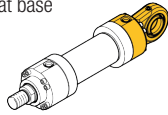
MP3

Bushing at base



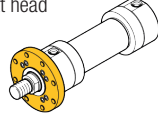
MP5

Spherical Bearing at base



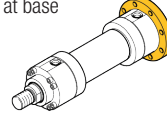
MF3

Round Flange at head



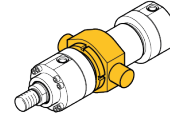
MF4

Round Flange at base



MT4

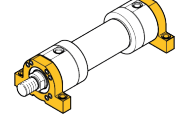
Trunnion



Position of Trunnion
L30= mm

MS2

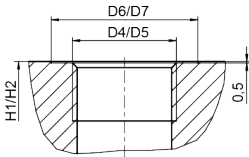
Foot Mounting



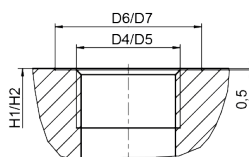
2. Oil Connections*

*exact measurements are in the **Product Brochure**

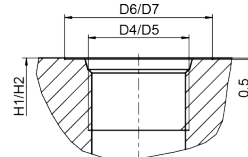
DIN EN ISO 1179-1 (BSP)



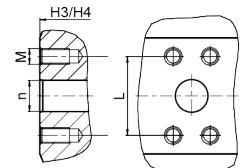
DIN EN ISO 9974-1 (metric)



SAE J1926 (UNF-ISO 11926-1)



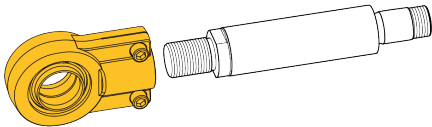
DIN ISO 6162-2 (SAE 6000 PSI)



Control Block Assembly

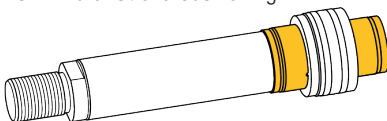
3. Equipment Options – Piston and Piston Rod

3.1 Piston Rod Head



Premounted Swivel Head

3.2 End of Stroke Cushioning

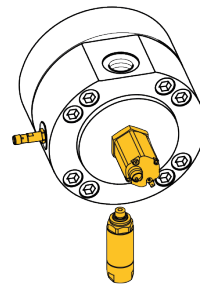


Piston Side

Rod Side

4. Equipment Options – Sensor Technology*

*positions defined as standard, modifications on customer's request



Proximity Switches

Piston Side

Rod Side

Pressure Sensor

Piston Side

Rod Side

Measuring Coupling acc. to ISO 15171-2

Piston Side

Rod Side

Position Transducer**

**only mountable on the piston side

For further questions, please contact us!

Please return completed form to:

	Created	Audited	Approved	Revision
Date:				
Name:				

Liebherr-Components AG

P.O. Box 222, CH-5415 Nussbaumen/AG

☎ +41 56 296 43 00, Fax +41 56 296 43 01

components.liebherr.com, ✉ E-Mail: components@liebherr.com