

380 bar Series-Production Range

Request Data

General Information

Request Date:	Telephone:
Company:	E-Mail:
Contact Person:	
Road:	Required Quantity:
Postcode, Location:	Batch Size:
Country:	Requested Delivery Date:

Dimensions [mm]

Piston-Ø	Rod-Ø	Piston-Ø	Rod-Ø
100	65	150	95
	70		105
105	70	155	100
	75		110
110	70	160	105
	75		110
115	75	165	105
	80		115
120	80	170	110
	85		120
125	80	180	115
	85		125
130	85	190	125
	95		140
135	85	200	125
	95		140
140	90	210	140
	100		150
145	95	220	140
	100		150

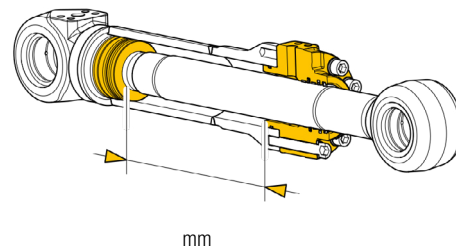
Piston Rod Coating

Double Chrome Coating (50µm Cr) 96h AASS Rating 10

Nickel-Chrome Coating (20µm Ni 30µm Cr) 240h AASS Rating 10

Nickel-Chrome Coating (50µm Ni 30µm Cr) 500h AASS Rating 10

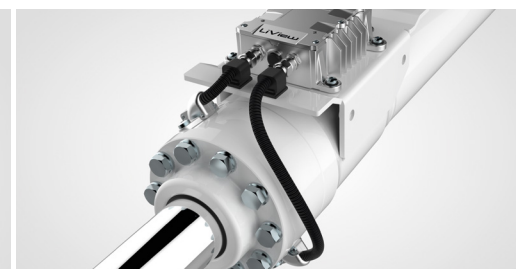
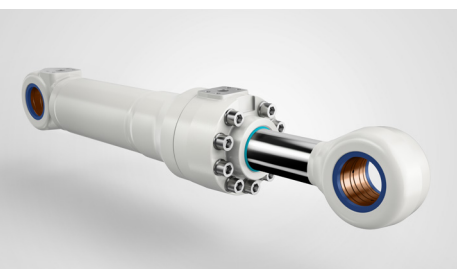
Stroke



Painting and Coating

Painted with Liebherr Grey (Standard)

Maritime Painted RAL:

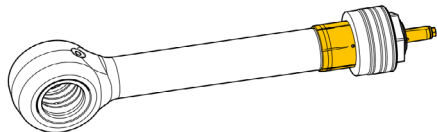


380 bar Series-Production Range

Options and Sensor Technology

1. Equipment Options – Piston and Piston Rod

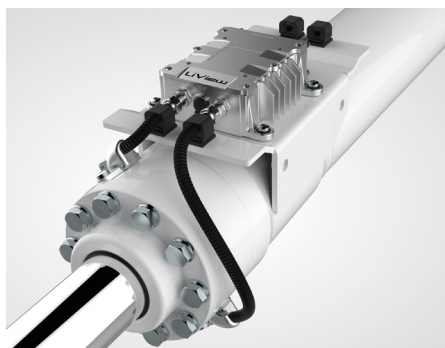
1.1 End of Stroke Cushioning



Piston Side

Rod Side

2. Equipment Options – Sensor Technology



LiView®
Position Transducer

More Information

Exact information about mounting type and oil connection can be found in the **Product Brochure**.

For further questions, please contact us!

Please return completed form to:

Liebherr-Components AG

P.O. Box 222, CH-5415 Nussbaumen/AG

+41 56 296 43 00, Fax +41 56 296 43 01

components.liebherr.com, E-Mail: components@liebherr.com