

260 bar Series-Production Range

Request Data

General Information

Request Date:	Telephone:
Company:	E-Mail:
Contact Person:	
Road:	Required Quantity:
Postcode, Location:	Batch Size:
Country:	Requested Delivery Date:

Dimensions [mm]

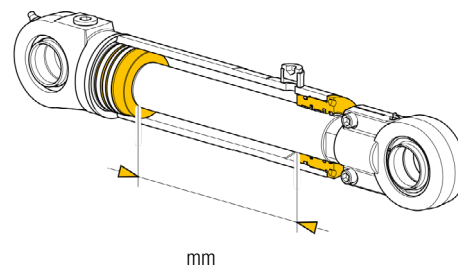
Piston-Ø	Rod-Ø	Piston-Ø	Rod-Ø
90	50	170	100
	60		105
100	60	180	100
	65		115
110	60	190	105
	70		120
120	70	200	115
	80		125
130	75	210	120
	85		140
140	80	220	140
	90		
150	85	230	150
	95		
160	95		
	100		

Piston Rod Coating

Chrome Coating 25µm (± 5µm)

Double Chrome Coating with 96 h AASS Rating 10

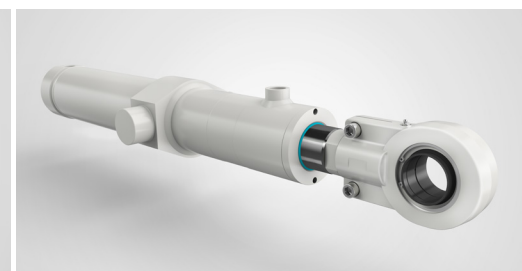
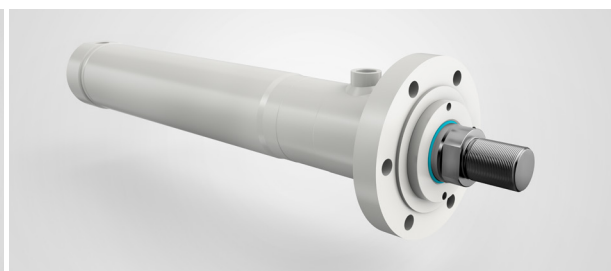
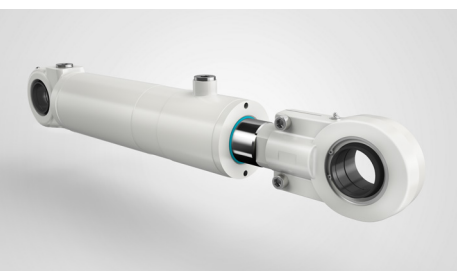
Stroke



Painting and Coating

Primed (Standard)

Painted at the customer's request (Liebherr Grey)



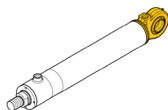
260 bar Series-Production Range

Options

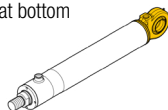
1. Mounting Types*

*exact measurements are in the **Product Brochure**.

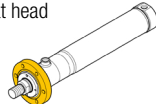
MP3
Bushing at base



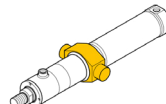
MP5
Spherical Bearing
at bottom



MF3
Round Flange
at head



MT4
Trunnion

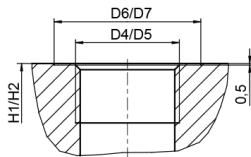


Position of Trunnion
L30= mm

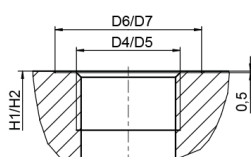
2. Oil Connections*

*exact measurements are in the **Product Brochure**.

DIN EN ISO 1179-1
(BSP)

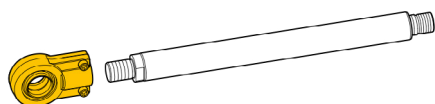


DIN EN ISO 9974-1
(metric)



3. Equipment Options – Piston and Piston Rod

3.1 Piston Rod Head



Premounted
Swivel Head

For further questions, please contact us!

Please return completed form to: