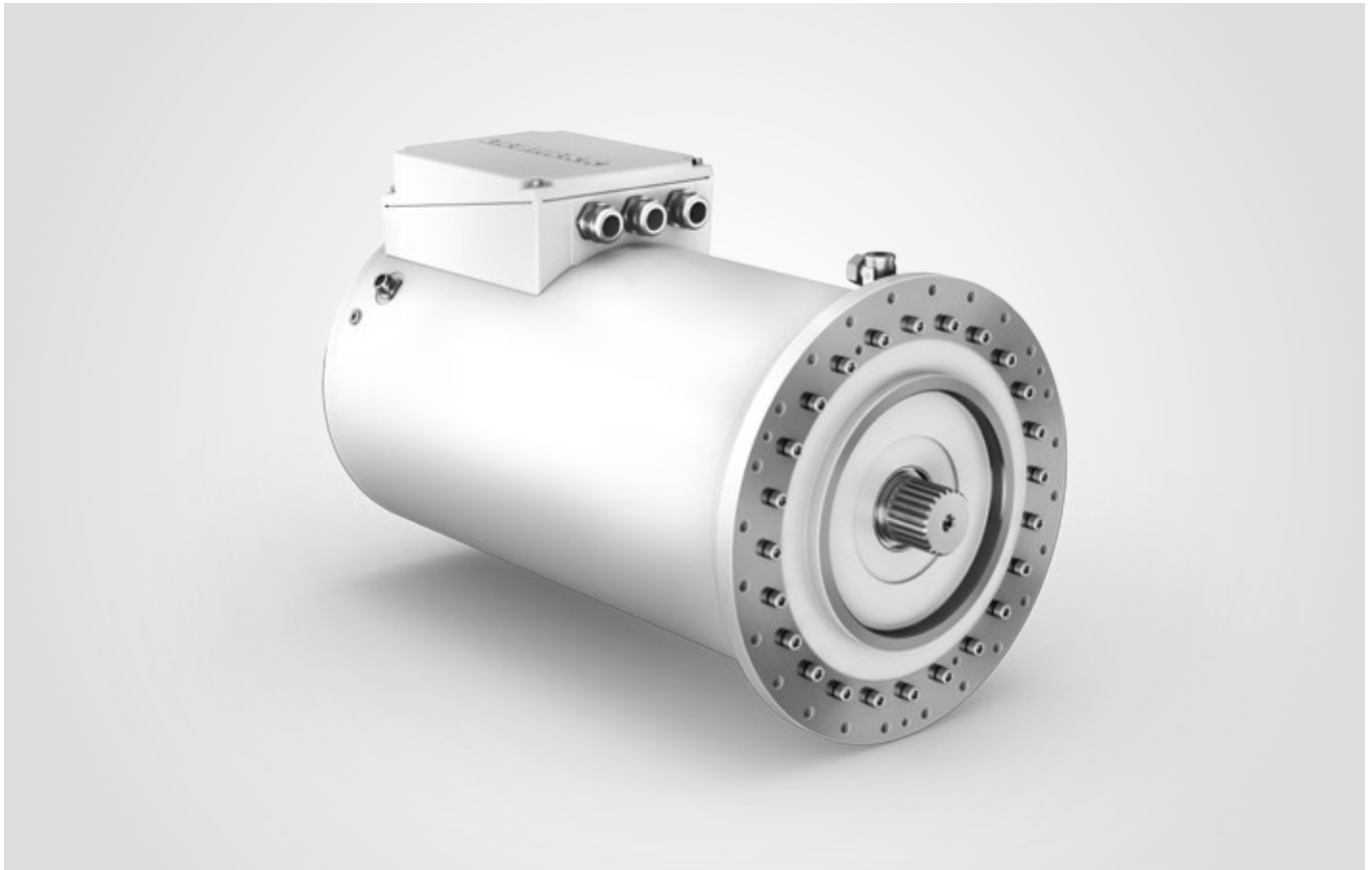


Short Description

Electric motor **PGF22 / 50-C**



PGF22 series permanent magnet synchronous motors from Liebherr have been developed for use under toughest operating conditions.

As the design is extremely resistant to impact loads and features a considerable overload capability, these motors are ideally suited for use in traction drives and for machine tools.

The high permissible coolant temperatures enable the motors to be used under most challenging environmental conditions and allow simple integration.

Features:

- Adjustment range from 700 to 3,500 rpm (factor 5)
- Can be overloaded up to four times / max. 3,500 Nm
- Suitable for coolant temperatures up to 65 °C
- Suitable for impact loads up to 6.5 g

Date: 21.11.2016

Version: 01

Technical Data

Electric motor PGF22/50-C

Technical Data

Type	Electric motor
Design	Permanent magnet synchronous motor
Series	PGF22/50-C
Frame size	225
Protection class	IP 65
Insulation category	F
Rated power	120/82.5 kW S1-100 %
Rated voltage	Y 305/Y 650 V
Rated frequency	35/175 Hz
Rated current	292/130 A
cos ϕ	0.81/0.66
Rated speed	700/3,500 rpm
Nominal torque	1,637/225 Nm
Ambient temperature	-25 °C / +70 °C
Approval	CE
Weight	820 kg
Moment of inertia	1.18 kgm ²
Diameter of flange	530 mm/275 mm/496 mm
DE Shaft	DIN5480 W70x2x34x9H

Torque-speed curve

