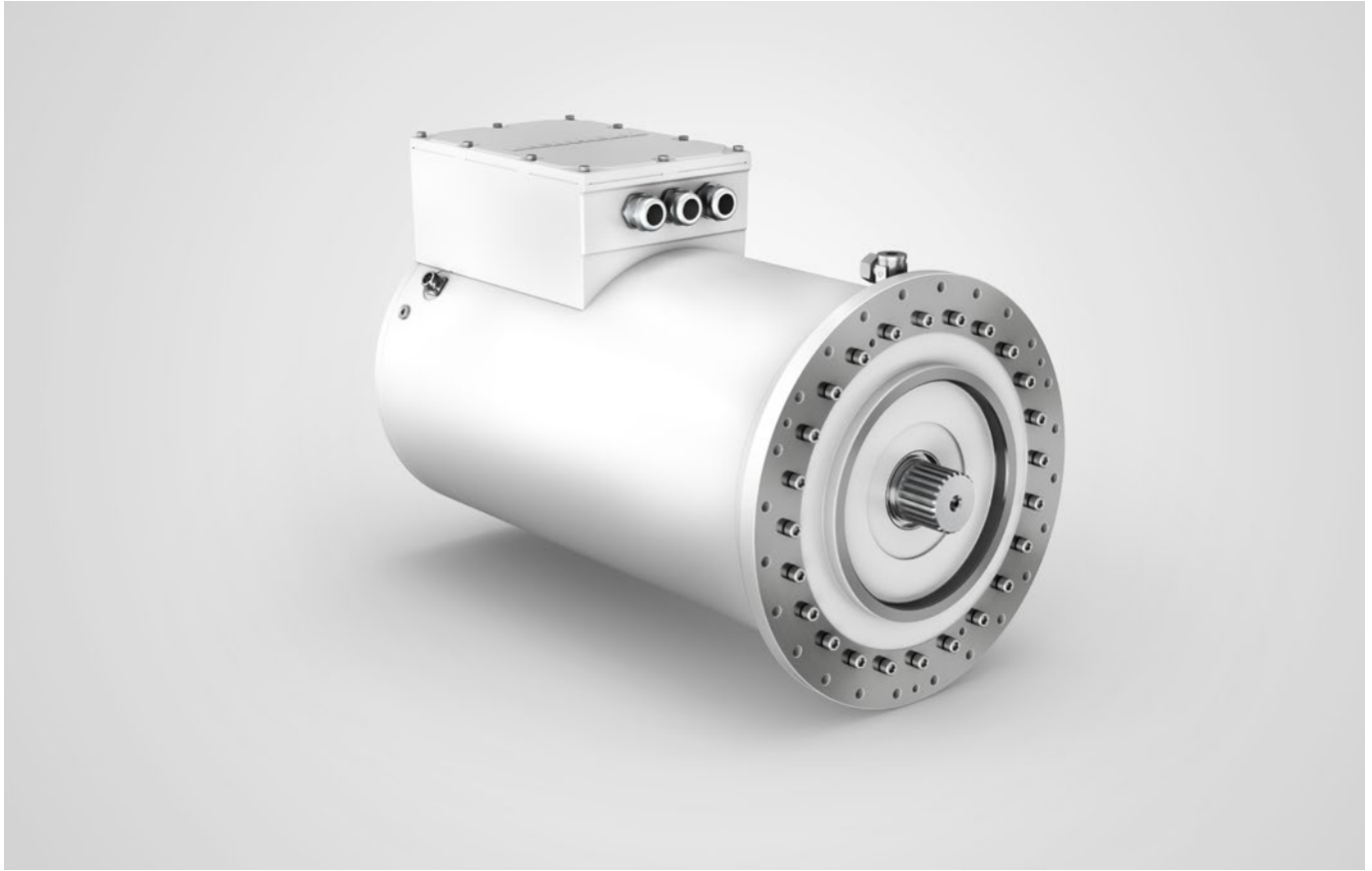


## Short description

# Generator PGF22/50-C



Permanent magnet synchronous generators in the PGF22-C series from Liebherr have been developed for use in the very toughest of conditions.

The high impact resistance of the design and significant overload capacity mean that they are ideal for use in mobile applications.

The high maximum coolant temperatures mean it is suitable for use in very difficult ambient conditions and also allow it to be integrated easily whilst delivering a high efficiency level.

### Features

- Variable speed using AFE mode
- Can be overloaded up to 1.8 times / max. 540 kW
- Suitable for coolant temperatures up to 65°C
- Suitable for impact loads of up to 6.5 g

Date: 18/10/2017

Version: 01

# Technical data

## Generator PGF22/50-C

### Technical data

Type	PGF22/50-C-RE
Design	Permanent magnet synchronous generator
Series	PGF22-C
Design size	225
Degree of protection	IP 65
Insulation class	F
Rated power	415 kVA S1-100%
Rated voltage	Y 635 V
Rated frequency	90 Hz
Rated current	378 A
cos $\phi$	0.721
Rated speed	1,800 rpm
Rated torque	1,660 Nm
Ambient temperature	-25° C / +45° C
Approval	CE
Weight	800 kg
Moment of inertia	1.18 kgm <sup>2</sup>
Flange diameter	535 mm / 312 mm / 502 mm
Shaft end AS	DIN 5480 W75 x 3 x 24 x 8e

### Efficiency diagram

