

Tunnelling components by Liebherr

Liebherr shift gears for Robbins



Liebherr is part of Russia's biggest infrastructure project

With the construction of a new tunnel through the mountain range of Severomuyskiy, the annual transport volume is to be increased from 16 to up to 100 million tonnes. Currently the expansion of the Severomuyskiy Tunnel is the largest infrastructure project in Russia.

Hard rock and EPB machine at once

Judging by the experience gained during the first tunnel construction through the Severomuyskiy mountain range in 1977, the difficult seismic conditions prove to be among the greatest challenges for the new project. Therefore, the Robbins Company has chosen the newly developed shift gears and planetary gearboxes from Liebherr to be installed in its new crossover tunnel boring machine. The shift gears make it possible to modify the whole drive train ratio in the field during the tunnel realization. Consequently it is possible to tune the working parameters of the cutter-head accordingly.



This allows to use the same machine in both operations: for hard rock and EPB (Earth Pressure Balance) conditions. Therefore, the necessity to decide for a certain machine type in the run-up to a TBM project is no longer an issue.

Components and services you can rely on

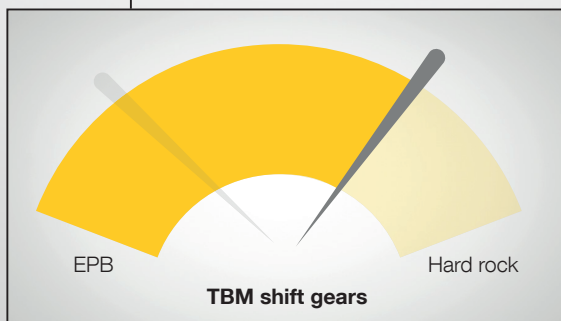
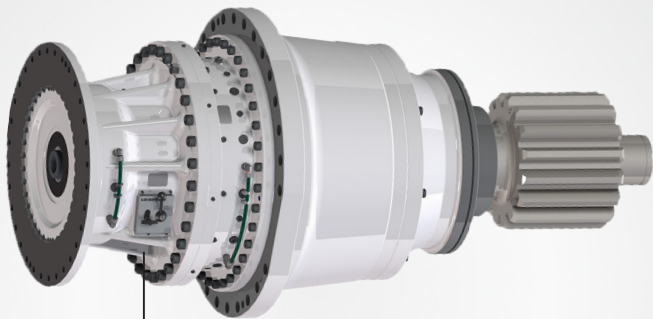
- Made to master extreme environments
- Extensive engineering and consulting services
- One-stop-shop for drives and gearboxes, slewing bearings and other components for tunnel boring machines

LIEBHERR

Components for extreme environments

Your benefits:

- Hard rock and EPB machine at once
- Reduced down-time
- Increased performance of your TBM machine
- No more compromises in choosing the one equivalent TBM machine to match the soil conditions



References

Ø 3 meters and less



Ø 4 meters



Ø 5 meters and more



Contact us now

Your Liebherr contact person will be keen to answer your questions and to discuss your chances and possibilities with Liebherr components for tunnel boring machines.

Email: components@liebherr.com

Liebherr-Components AG

Post Box 222, CH-5415 Nussbaumen/AG

+41 56 296 43 00

E-Mail: components@liebherr.com, components.liebherr.com