

Display family for mobile machinery

Display Controller DC5

Customized to your application



LIEBHERR

Versatile applications



Display Controller DC5

Based on a high-capacity i.MX6 processor and a Linux/Yocto software environment, our displays provide visual comfort and high processing power for the driver's cabin.

Our experience – your advantage

The DC5 is already our fifth display controller generation for mobile machinery. Every day, tens of thousands of our displays reliably supply operators with relevant information – worldwide in various industries, such as construction, agriculture or material handling. Benefit from our cross-industry know how.

Wide range of applications

In addition to displaying operational parameters and camera images, the DC5 display controller also qualifies as visibility aid in accordance with DIN EN ISO 16001:2016. Equipped with high processing power, the DC5 can be used as a control computer and as a programmable input device, thanks to its integrated PCAP touchscreen.

One platform – extensive flexibility



Customized to your application

Using the existing platform design, we are happy to develop an individual display for you, which meets the requirements of your application – and thereby enables you to maximise the benefits of your human-machine interfaces. You can customize various parameters, including:

- Design: configuration of the front frame
- Display: size, quality
- Processing power: processor, memory
- Performance data: temperature range, operating voltage
- Optional interfaces: Bluetooth, CANopen

Higher integration required?

On demand, we integrate additional functionalities into your customized display, such as:

- WLAN
- Mobile communications: 2G, 3G, 4G
- Satellite navigation: GPS, GLONASS, Galileo, Beidou, QZSS

Protecting your investment

Through proactive obsolescence management, we ensure long-term availability of our displays. That way, we protect your investment.

Existing portfolio – technical data

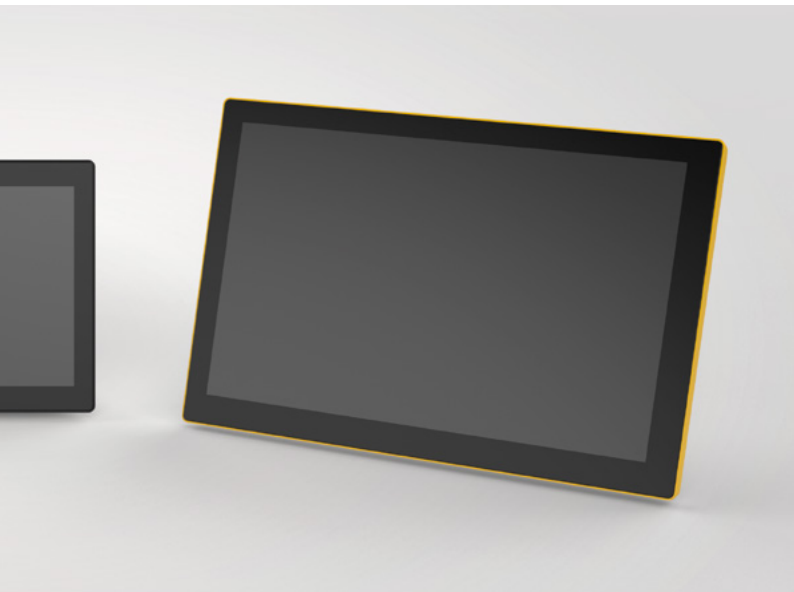


Adapted for your machine – fast and cost-optimized

Our existing DC5 portfolio provides an ideal basis for your individual display controller. The portfolio comprises 7-, 9- and 12-inch DC5 versions. These proven display solutions save time-consuming development and qualification processes. This allows an economic and fast adaption – perfectly optimized for your application.

Technical data

	7 inch	9 inch	12 inch
Processor	i.MX6 quad-core		
Clock speed	800 MHz		
RAM (DDR3)	1 GB		
Flash	32 MB NOR, 4 GB eMMC		
Operating system/ programming	Linux/Yocto Pyro 2.3.3		
Viewing angle	80° all directions	80° all directions	h: -80°, +80° v: -60°, +80°
Brightness	500 cd/m ²	500 cd/m ²	700 cd/m ²
Contrast	900:1	800:1	700:1
Resolution	800 x 480 px	1,280 x 800 px	1,280 x 800 px



Technical data

	7 inch	9 inch	12 inch
Operating voltage	8 V to 32 V		
Housing	Front frame: polyurethane Rear panel: die-cast aluminium		
Coating	antireflective		
Audio	audio system with integrated speakers		
Ethernet	1 x 100BASE-TX 1 x 1000BASE-TX		
Optional interfaces	2 x CAN Bluetooth		
Plug	2 x M12-8A (m, f) 1 x M12-8X (f)		
Mounting	VESA 75		
Dimensions mm (width/height/depth)	186 x 126 x 54	224 x 158 x 54	297 x 200 x 58
Operating temperature	-20 °C to +70 °C	-30 °C to +70 °C	-30 °C to +70 °C

High-quality manufacturing



State-of-the-art manufacturing technologies

Optical Bonding combines display, touch sensor and protective glass to create overall robustness. This high-quality bonding technology ensures that your display raises the challenge of demanding operational conditions. Optical Bonding allows for long-term use of the display with sustained high quality, and provides additional advantages:

- High legibility even in strong sunlight
- No formation of moisture
- No dust
- Increased touch functionality
- High robustness

Reliable in demanding situations

The DC5 family is rated up to IP65 in accordance with ISO 20653. In addition, the DC5 ensures correct display even when operated under electromagnetic interference up to 100 V/m.

Application examples



Safety at work

Everyday accident risk: blind spots and other factors like narrow cabin walls may limit the view of the driver. The solution: use of a camera-monitor-system, implemented with Liebherr's MDC3 digital camera, for instance. Hard-to-see areas for the driver can then be safely displayed on the DC5, thereby avoiding accidents as well as high costs.

Machine monitoring

In addition to camera images, the DC5 can display a clear overview of important operational data and parameters. Furthermore, its high processing power allows for the implementation of alarm functions, making it possible to recognize and avoid potential damage.

Comfort

Operators often spend many hours a day in the driver's cabin. The dirt-resistant DC5 touchscreen allows for comfortable and intuitive multi-touch operation. That can ease daily operations and improve efficiency.

Liebherr-Components AG

Post box 222, CH-5415 Nussbaumen/AG

☎ +41 56 296 43 00, ✉ components@liebherr.com

www.liebherr.com/dc5