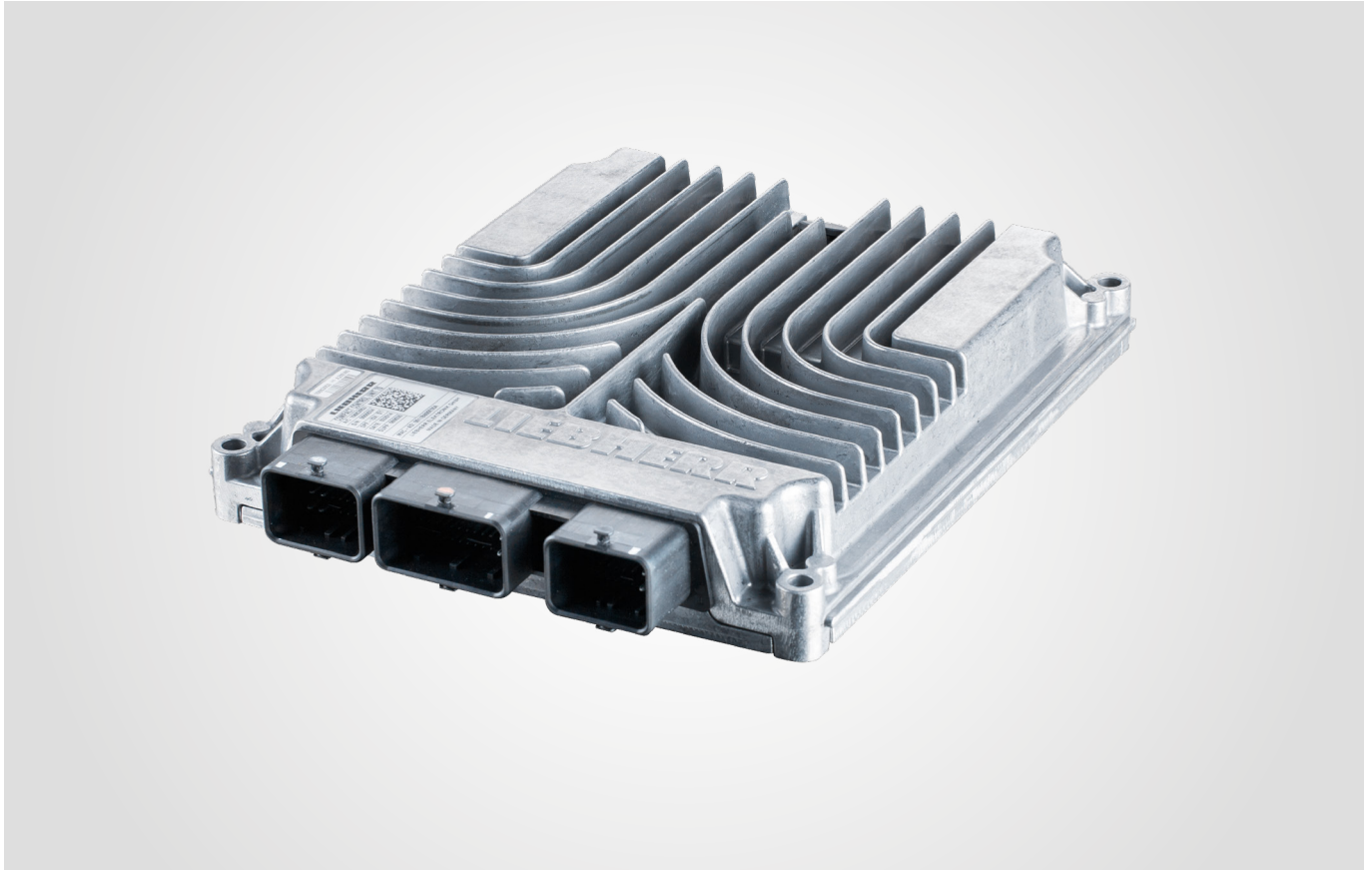


## Short Description

# Compact Control Unit CCU70



The Compact Control Unit from Liebherr-Elektronik GmbH is a versatile, freely programmable control unit. The CCU was specially developed for applications in mobile machinery (e.g. construction equipment and agricultural machinery) and commercial vehicles. Hence, reliability is guaranteed even under the most extreme environmental conditions such as vibration, dirt, humidity, salt spray or electromagnetic interference. The Compact Control Unit has three fieldbus interfaces, 70 local inputs and outputs, over 100 diagnostic paths and can switch currents of up to 40 ampere. A 32-bit processor, clocked with 150 MHz, provides the necessary computing power.

### Features CCU70

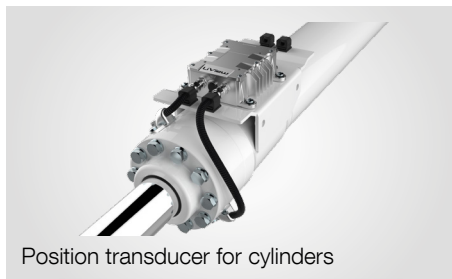
- In- and outputs flexibly configurable
- Easy programming with CODESYS® 3.5 or C/C++
- ISO 14229 UDS diagnostic services
- Robust and reliable in rough environmental conditions
- For use in mobile machinery

# Technical Data

## Compact Control Unit CCU70

### Technical Data

Processor	Freescale SPC5644A; 32-bit
Frequency	150 MHz
Memory	1,216 kB RAM , 4 MB Flash
Analogue inputs	12 x voltage measurement 0–10 V; current measurement 4–20 mA; 10-bit
Digital inputs	22 x pull up/pull down configurable
Resistance inputs	4 x measurement range 500–3,000 Ω; 2 x balanced/2 x unbalanced
Frequency inputs	4 x measurement range 1 Hz–30 kHz
PWM outputs	18 x high-side with current measurement; 10 x 4 A; 8 x 2 A
Analogue outputs	2 x voltage/current configurable; voltage range 0–10 V; current range 4–20 mA
Digital outputs	4 x high-side 2 A
Constant voltage outputs	2 x configurable in 0 V, 5 V, 8 V, 12 V
CAN	3 x 2.0 B by ISO 11898-2; CANopen Master; J1939
Ethernet (for programming)	1 x 10/100 Mbit
Supply voltage	7–32 V; switching on threshold 9 V
Dimensions	254 x 204 x 39 mm
Weight	Approx. 1,500 g
Housing	Die-cast aluminium
Operating temperature	-40 °C to +85 °C
IP rating	IP67; IP6K9K



Position transducer for cylinders



Cameras



Keyboard units



Control electronics



Telematics



Display & control