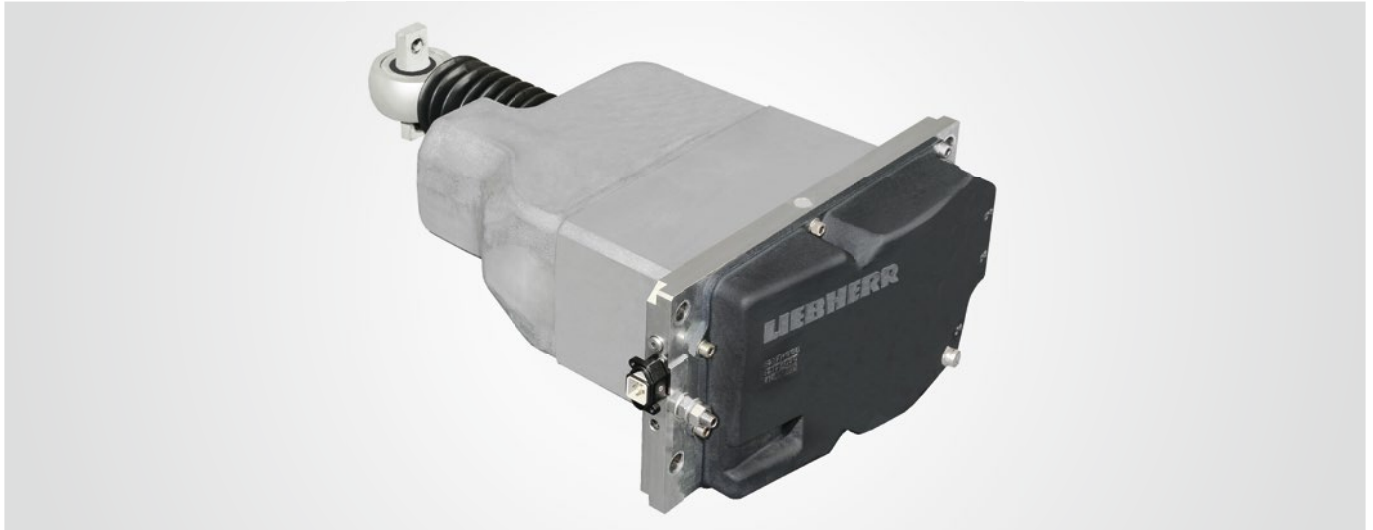


Electro Hydraulic Actuator

Active Lateral Suspension for Zefiro 300



General Technical Data

Stroke	150 mm
Speed	54 mm/s
Force	35 kN
Weight	75 kg
Dimensions (W x L x H)	350 x 500 x 250 mm

Electrical Data

Control Unit	24 V DC
Pump Unit	400 V AC, 50 Hz

Description

The extremely compact design includes a complete hydraulic system and has the electronics fully integrated inside the actuator. This new development is a combination of damper and operating cylinder which actively drive the car into the middle position in curves and improves the riding comfort.

The damper further provides a continuous active control of the lateral forces.

Additional Features

- Actuator technology could be used for many other applications as e.g. tilting, active radius steering and bogie steering device
- Configuration of the actuator can be adapted to given envelope