

---

# R 945 Litronic

---

## LIEBHERR

Crawler excavator

**Generation**

7

**Operating weight**

40,800–46,550 kg

**Engine**

220 kW / 299 HP

Tier 4 Final

**Bucket capacity**

2.00–3.00 m<sup>3</sup>



# Experience the progress R 945

---

## ① Safety

- Panoramic visibility with no obstructions and camera on the rear and the right side
- Tilttable console for easy and safe access to cab
- Emergency exit via the rear cab window whatever the configuration of the excavator
- Right window and windshield in laminated and tinted glass

## ② Equipment

- Choice of 2 types of booms and multiple lengths of equipment
- Longer lifespan of components thanks to a grouping of the lubrication points as standard
- Safety check valves for hoist and stick cylinders (option)

## ③ Maintenance

- Innovative servicing concept, with service points accessible from ground level
- Engine oil, hydraulic oil and fuel levels visible on the display

## ④ Comfort

- Spacious, air-conditioned work space
- Mechanical seat with vertical suspension as standard
- Easy-to-use high resolution 9" colour touchscreen
- Completely retractable front cab window
- LED lighting as standard



## ⑤ Engine

- Liebherr engine that conforms with the US EPA Tier 4 Final exhaust emissions standard
- Automatic engine idling and engine stop

## ⑥ Undercarriage

- Choice of 2 different robust and reliable X-shaped undercarriages with integrated eyes for secure transport
- Easy maintenance
- Maintenance-free track chains and track rollers with lifetime lubrication



# Technical data



## Engine

|                              |  |
|------------------------------|--|
| <b>Rating per ISO 9249</b>   | 220kW (299 HP) at 1,800RPM   |
| <b>Torque</b>                | 1,421 Nm at 1,350RPM   |
| <b>Model</b>                 | Liebherr D944 A7-24  |
| <b>Type</b>                  | 4 cylinder in-line   |
| <b>Bore</b>                  | 130 mm   |
| <b>Stroke</b>                | 150 mm   |
| <b>Displacement</b>          | 8.0l   |
| <b>Engine operation</b>      | 4-stroke diesel<br>Common-Rail<br>Turbo-charged and after-cooler       |
| <b>Exhaust gas treatment</b> | Tier 4 Final<br>DOC + SCR<br>Passive regeneration by thermo management |
| <b>Cooling system</b>        | Water-cooled and oil cooler, after-cooled and fuel cooled              |
| <b>Air cleaner</b>           | Dry-type air cleaner with pre-cleaner                                  |
| <b>Fuel tank</b>             | 729 l  |
| <b>Urea tank</b>             | 90 l   |
| <b>Electrical system</b>     |  |
| <b>Voltage</b>               | 24 V   |
| <b>Batteries</b>             | 2 x 135 Ah / 12 V  |
| <b>Alternator</b>            | Three-phase current 28 V / 140 A                                       |
| <b>Engine idling</b>         | Sensor controlled  |



## Hydraulic controls

|                               |  |
|-------------------------------|--|
| <b>Power distribution</b>     | Via control valves, simultaneous and independent actuation of undercarriage, swing drive and equipment |
| <b>Electric servo circuit</b> | Electro-hydraulic control  |
| <b>Equipment and swing</b>    | Proportional via joystick levers   |
| <b>Travel</b>                 | - Proportional control via foot pedals or removable levers<br>- Automatic or manual speed adjustment   |
| <b>Additional functions</b>   | Proportional regulation via foot pedals or mini-joystick   |



## Hydraulic system

|   |   |
|---|---|
| <b>Hydraulic system</b>                     | Positive Control hydraulic system. Demand-based, double independent pump flows<br>Features high system dynamics and sensitivity provided by integrated system controlling<br>Independent circuit for rotation             |
| <b>Hydraulic pumps</b>                      |   |
| <b>For equipment and travel drive</b>       | Liebherr, variable displacement, swashplate double pump   |
| <b>Max. flow</b>                            | 2 x 315 l/min.  |
| <b>Max. pressure</b>                        | 380 bar   |
| <b>For swing drive</b>                      | Swashplate pump, closed-loop circuit  |
| <b>Max. flow</b>                            | 205 l/min.  |
| <b>Max. pressure</b>                        | 400 bar   |
| <b>Pump management</b>                      | Electronic management synchronous to the control block  |
| <b>Hydraulic tank</b>                       | 239 l   |
| <b>Hydraulic system</b>                     | max. 475 l  |
| <b>Filtration</b>                           | 1 main return filter with integrated partial micro filtration (10 µm)   |
| <b>Cooling system</b>                       | Compact cooler, consisting of a water cooler, with hydraulic oil cooler, gearbox oil cooler, fuel cooler and after-cooler cores and hydrostatically driven fan  |
| <b>MODE selection</b>                       | Adjustment of engine and hydraulic performance via a mode pre-selector to match application, e.g. for especially economical and environmentally friendly operation or for maximum digging performance and heavy-duty jobs |
| <b>Engine speed and performance setting</b> | Stepless adjustment of engine output and hydraulic power via engine speed   |



## Swing drive

|                      |  |
|----------------------|--|
| <b>Drive</b>         | Liebherr swashplate motor with integrated brake valve and torque control |
| <b>Transmission</b>  | Liebherr compact planetary reduction gears                               |
| <b>Swing ring</b>    | Liebherr, sealed race ball bearing swing ring, internal teeth            |
| <b>Swing speed</b>   | 0-8.6 RPM stepless   |
| <b>Swing torque</b>  | 117 kNm  |
| <b>Holding brake</b> | Wet multi-disc (spring applied, pressure released)                       |



## Cab

|                               |  |
|-------------------------------|--|
| <b>Cab</b>                    | ROPS safety cab structure optional (roll-over protection system according to ISO 12117-2:2008) with windscreen, totally or partially retractable (only upper part), under cab roof, LED work headlights integrated in the ceiling, a door with a sliding window (can be opened on both sides), large storing box and several stowing possibilities, shock-absorbing suspension, laminated right hand side and roof windows, all windows tinted, separate extensible window shades for the sunroof window and windscreen, cigarette lighter and 24 V plug, cup holder, mobile phone storage net |
| <b>Operator's seat</b>        | Liebherr-Standard seat, mechanically suspended with weight adjustment, vertical seat damping including consoles and joysticks. Seat and armrests adjustable separately and in combination (adjustable in length, height, and inclination)  |
| Option                        | Liebherr-Comfort seat, airsprung with automatic weight adjustment, vertical and longitudinal seat damping including consoles and joysticks, with seat heating  |
| <b>Arm consoles</b>           | Oscillating consoles with seat, tiltable console left  |
| <b>Operation and displays</b> | Large high-resolution operating unit, intuitive, colour display with touchscreen, video-compatible, numerous setting, control and monitoring options, e.g. air conditioning control, fuel consumption, machine and attachment parameters   |
| <b>Air-conditioning</b>       | Automatic air-conditioning, recirculated air function, fast de-icing and demisting at the press of a button, air vents can be operated via a menu. Recirculated air and fresh air filters can be easily replaced and are accessible from the outside. Heating-cooling unit, designed for extreme outside temperatures, sensors for solar radiation, inside and outside temperatures  |
| <b>Noise emission</b>         |  |
| ISO 6396                      | 80 dB(A) = L <sub>PA</sub> (inside cab)  |
| 2000/14/EC                    | 107 dB(A) = L <sub>WA</sub> (surround noise)   |



## Undercarriage

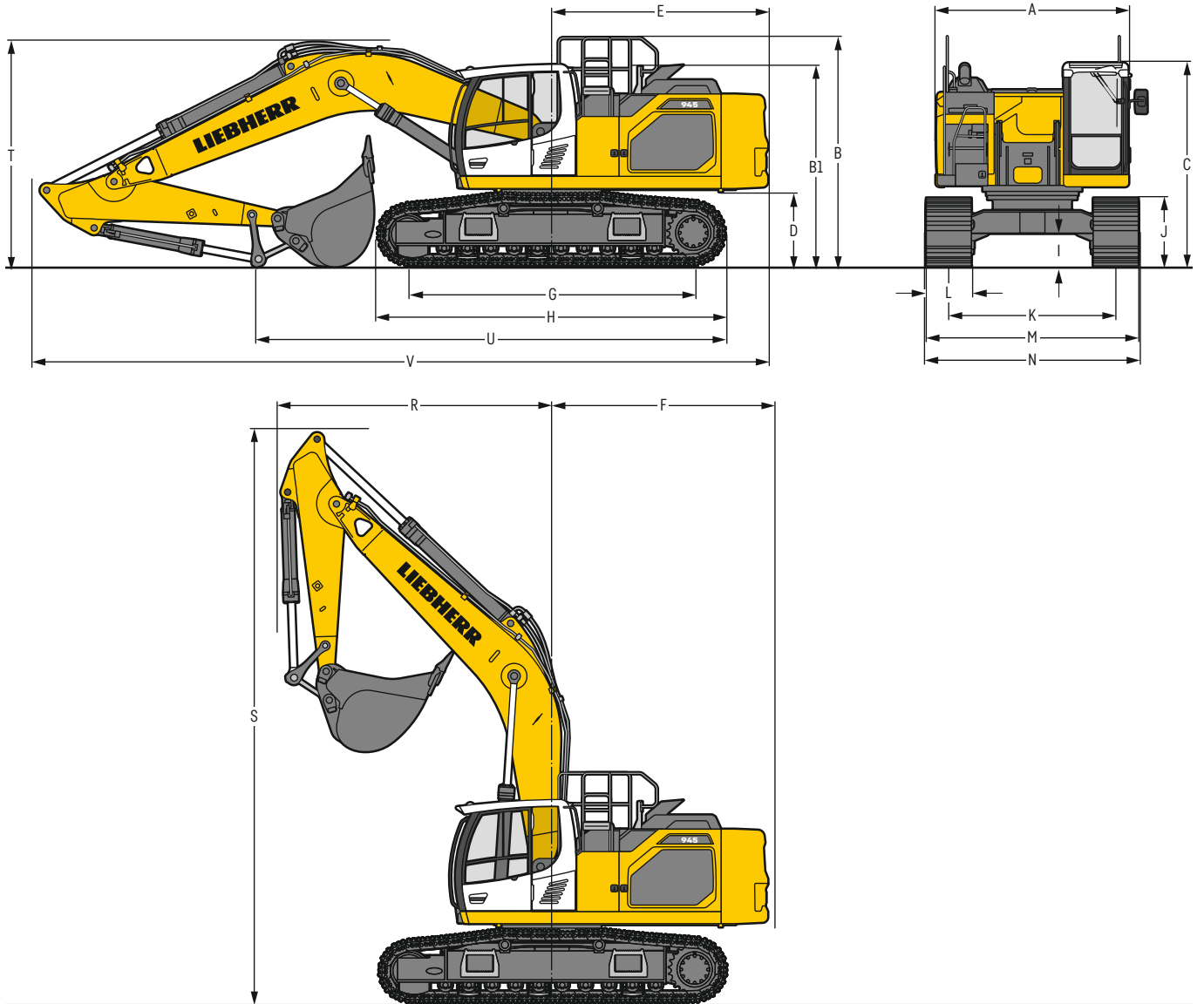
|  |   |
|--|---|
| <b>Versions</b>                        |   |
| S-HD                                   | Gauge 2,890 mm  |
| LC-V                                   | Gauge 2,390 mm / 2,890 mm                                 |
| <b>Drive</b>                           | Liebherr swashplate motor with brake valves on both sides |
| <b>Transmission</b>                    | Liebherr planetary reduction gear                         |
| <b>Maximum travel speed</b>            | 2.9 km/h low range<br>4.6 km/h high range                 |
| <b>Drawbar pull on crawler</b>         | 363 kN  |
| <b>Track components</b>                | D7G, maintenance-free                                     |
| <b>Track rollers / Carrier rollers</b> | 10 / 2 (S-HD)<br>10 / 3 (LC-V)                            |
| <b>Tracks</b>                          | Sealed and greased  |
| <b>Track pads</b>                      | Triple grouser  |
| <b>Holding brake</b>                   | Wet multi-disc (spring applied, pressure released)        |
| <b>Brake valves</b>                    | Integrated into travel motor                              |
| <b>Lashing eyes</b>                    | Integrated  |



## Equipment

|                              |   |
|------------------------------|---|
| <b>Type</b>                  | Combination of resistant steel plates and cast steel components |
| <b>Hydraulic cylinders</b>   | Liebherr cylinders with seal and guidance systems               |
| <b>Bearings</b>              | Sealed, low maintenance   |
| <b>Lubrication</b>           | Liebherr central lubrication system                             |
| <b>Hydraulic connections</b> | Pipes and hoses equipped with SAE split-flange connections      |
| <b>Buckets</b>               | Standard equipped with Liebherr tooth system                    |

# Dimensions



|    | S-HD                                    | mm                  |                     |                     | LC-V                         | mm                           |                              |  |
|----|---|---------------------|---------------------|---------------------|------------------------------|------------------------------|------------------------------|--|
| A  | Uppercarriage width                     | 2,990 <sup>2)</sup> |                     |                     | 2,990 <sup>2)</sup>          |                              |                              |  |
| B  | Uppercarriage height                    | 3,635               |                     |                     | 3,760                        |                              |                              |  |
| B1 | Uppercarriage height (handrails folded) | 3,195               |                     |                     | 3,320                        |                              |                              |  |
| C  | Cab height                              | 3,215               |                     |                     | 3,340                        |                              |                              |  |
| D  | Counterweight ground clearance          | 1,240               |                     |                     | 1,365                        |                              |                              |  |
| E  | Rear-end length                         | 3,350               |                     |                     | 3,350                        |                              |                              |  |
| F  | Tail swing radius                       | 3,450               |                     |                     | 3,450                        |                              |                              |  |
| G  | Wheelbase                               | 4,400               |                     |                     | 4,400                        |                              |                              |  |
| H  | Undercarriage length                    | 5,365               |                     |                     | 5,350                        |                              |                              |  |
| I  | Undercarriage ground clearance          | 550                 |                     |                     | 740                          |                              |                              |  |
| J  | Track height                            | 1,145               |                     |                     | 1,185                        |                              |                              |  |
| K  | Track gauge                             | 2,890               |                     |                     | 2,390/2,890 <sup>3)</sup>    |                              |                              |  |
| L  | Track pad width                         | 600                 | 750                 | 900                 | 600                          | 750                          | 900                          |  |
| M  | Width over tracks                       | 3,490               | 3,640               | 3,790               | 2,990/3,490 <sup>3)</sup>    | 3,140/3,640 <sup>3)</sup>    | 3,290/3,790 <sup>3)</sup>    |  |
| N  | Width over steps                        | 3,695 <sup>1)</sup> | 3,695 <sup>1)</sup> | 3,845 <sup>1)</sup> | 3,200/3,700 <sup>1) 3)</sup> | 3,200/3,700 <sup>1) 3)</sup> | 3,350/3,850 <sup>1) 3)</sup> |  |

<sup>1)</sup> width with removable steps  
<sup>2)</sup> without door stop device and spacer  
<sup>3)</sup> work position

|                              | Stick length<br>m | Mono boom 6.45 m<br>direct mounting |                      |                     | Mono boom SME 6.15 m<br>direct mounting |       |                             | Mono boom SME 6.45 m<br>direct mounting |    |                             |
|------------------------------|-------------------|-------------------------------------|----------------------|---------------------|---|-------|-----------------------------|---|----|-----------------------------|
|                              |                   | S-HD                                | mm                   | LC-V                | S-HD                                    | mm    | LC-V                        | S-HD                                    | mm | LC-V                        |
| <b>R</b> Front swing radius  |                   |                                     | 4,250                |                     |   | 4,050 |                             | 4,250                                   |    |                             |
| <b>S</b> Height with boom up |                   | 8,950                               |                      | 9,000               | 8,750                                   |       | 8,800                       | 8,950                                   |    | 9,050                       |
| <b>T</b> Boom height         | 2.60              | 3,350                               |                      | 3,600               | -                                       |       | -                           | -                                       |    | -                           |
|                              | 2.90              | 3,750                               |                      | 3,800               | -                                       |       | -                           | -                                       |    | -                           |
|                              | 3.25              | 3,800                               |                      | 3,850               | -                                       |       | -                           | -                                       |    | -                           |
|                              | 3.95              | 3,400 <sup>1)</sup>                 |                      | 3,400 <sup>1)</sup> | -                                       |       | -                           | -                                       |    | -                           |
|                              | 2.15 SME          | -                                   |                      | -                   | 3,550 / 3,350 <sup>1)</sup>             |       | 3,550 / 3,350 <sup>1)</sup> | 3,500 / 3,300 <sup>1)</sup>             |    | 3,550 / 3,350 <sup>1)</sup> |
|                              | 2.60 SME          | -                                   |                      | -                   | 3,900 / 3,350 <sup>1)</sup>             |       | 3,900 / 3,400 <sup>1)</sup> | 3,700 / 3,350 <sup>1)</sup>             |    | 3,750 / 3,400 <sup>1)</sup> |
| <b>U</b> Length on ground    | 2.60              | 7,000                               |                      | 7,000               | -                                       |       | -                           | -                                       |    | -                           |
|                              | 2.90              | 6,700                               |                      | 7,000               | -                                       |       | -                           | -                                       |    | -                           |
|                              | 3.25              | 6,250                               |                      | 7,000               | -                                       |       | -                           | -                                       |    | -                           |
|                              | 3.95              | 8,050 <sup>1)</sup>                 |                      | 8,000 <sup>1)</sup> | -                                       |       | -                           | -                                       |    | -                           |
|                              | 2.15 SME          | -                                   |                      | -                   | 7,050 / 9,550 <sup>1)</sup>             |       | 6,850 / 9,500 <sup>1)</sup> | 7,400 / 7,800 <sup>1)</sup>             |    | -                           |
|                              | 2.60 SME          | -                                   |                      | -                   | 6,850 / 9,100 <sup>1)</sup>             |       | 6,850 / 9,100 <sup>1)</sup> | 7,050 / 7,550 <sup>1)</sup>             |    | -                           |
| <b>V</b> Overall length      | 2.60              |                                     | 11,200               |                     | -                                       |       | -                           | -                                       |    | -                           |
|                              | 2.90              |                                     | 11,200               |                     | -                                       |       | -                           | -                                       |    | -                           |
|                              | 3.25              |                                     | 11,200               |                     | -                                       |       | -                           | -                                       |    | -                           |
|                              | 3.95              |                                     | 11,000 <sup>1)</sup> |                     | -                                       |       | -                           | -                                       |    | -                           |
|                              | 2.15 SME          |                                     | -                    |                     | 10,900 / 10,800 <sup>1)</sup>           |       | -                           | 11,200 / 11,100 <sup>1)</sup>           |    | -                           |
|                              | 2.60 SME          |                                     | -                    |                     | 10,900 / 10,800 <sup>1)</sup>           |       | -                           | 11,200 / 11,100 <sup>1)</sup>           |    | -                           |
| Bucket                       |                   |                                     | 2.15 m <sup>3</sup>  |                     |   |       | 2.50 m <sup>3</sup>         |   |    | 2.25 m <sup>3</sup>         |

<sup>1)</sup> without bucket

## Transport dimensions

### removable elements disassembled

|                  | Undercarriage                | Mono boom 6.45 m                              |                     |                             | Mono boom SME 6.15 m          |                             |                             | Mono boom SME 6.45 m          |                             |                             |
|------------------|------------------------------|---|---------------------|-----------------------------|-------------------------------|-----------------------------|-----------------------------|-------------------------------|-----------------------------|-----------------------------|
|                  |                              | mm  | mm                  | mm                          | mm                            | mm                          | mm                          | mm                            | mm                          |                             |
| Pad width        |                              | 600   | 750                 | 900                         | 600                           | 750                         | 900                         | 600                           | 750                         | 900                         |
| Transport width  | S-HD                         | 3,490   | 3,640               | 3,790                       | 3,490                         | 3,640                       | 3,790                       | 3,490                         | 3,640                       | 3,790                       |
|                  | LC-V                         | 2,990   | 3,140               | 3,290                       | 2,990                         | 3,140                       | 3,290                       | 2,990                         | 3,140                       | 3,290                       |
|                  | Undercarriage/<br>Stick<br>m | S-HD  | LC-V                |                             |                               |                             | S-HD                        | LC-V                          |                             |                             |
|                  |                              | mm  | mm                  | mm                          | mm                            | mm                          | mm                          | mm                            | mm                          | mm                          |
| Transport length |                              | 11,200 <sup>2)</sup> / 11,000 <sup>1)3)</sup> |                     |                             | 10,900 / 10,800 <sup>1)</sup> |                             |                             | 11,200 / 11,100 <sup>1)</sup> |                             |                             |
| Transport height | 2.60                         | 3,350   |                     | 3,600                       | -                             |                             |                             | -                             |                             |                             |
|                  | 2.90                         | 3,750   |                     | 3,800                       | -                             |                             |                             | -                             |                             |                             |
|                  | 3.25                         | 3,800   |                     | 3,850                       | -                             |                             |                             | -                             |                             |                             |
|                  | 3.95                         | 3,400 <sup>1)</sup>                           |                     | 3,400 <sup>1)</sup>         | -                             |                             |                             | -                             |                             |                             |
|                  | 2.15 SME                     | -   |                     | -                           | 3,550 / 3,350 <sup>1)</sup>   |                             | 3,550 / 3,350 <sup>1)</sup> | 3,500 / 3,300 <sup>1)</sup>   |                             | 3,550 / 3,350 <sup>1)</sup> |
| 2.60 SME         | -                            |   | -                   | 3,900 / 3,350 <sup>1)</sup> |                               | 3,900 / 3,400 <sup>1)</sup> | 3,700 / 3,350 <sup>1)</sup> |                               | 3,750 / 3,400 <sup>1)</sup> |                             |
| Bucket           |                              |   | 2.15 m <sup>3</sup> |                             |                               |                             | 2.50 m <sup>3</sup>         |                               |                             | 2.25 m <sup>3</sup>         |

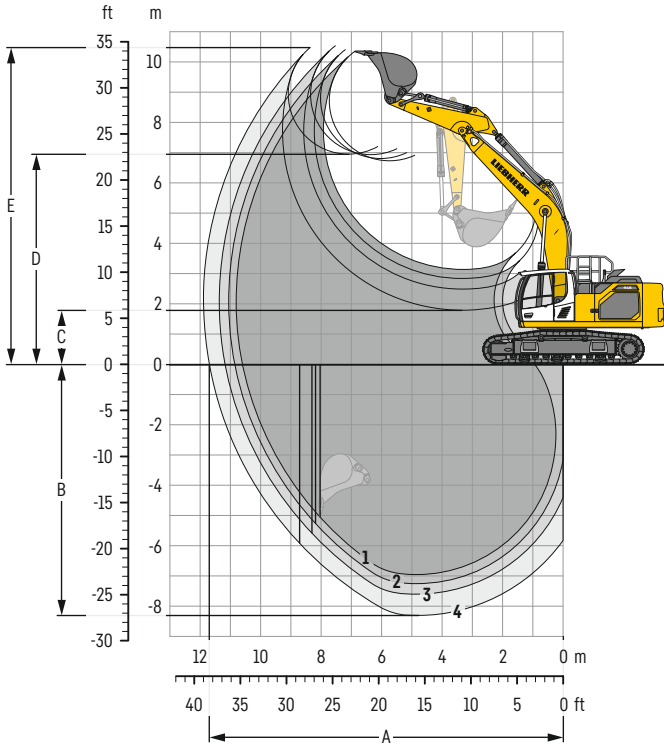
<sup>1)</sup> without bucket

<sup>2)</sup> with sticks 2.60 m, 2.90 m and 3.25 m

<sup>3)</sup> with stick 3.95 m

# Backhoe bucket

with mono boom 6.45 m



## Digging envelope

| without quick coupler        | 1 | 2     | 3     | 4     |       |
|------------------------------|---|-------|-------|-------|-------|
| Stick length                 | m | 2.60  | 2.90  | 3.25  | 3.95  |
| A Max. reach at ground level | m | 10.60 | 10.85 | 11.17 | 11.70 |
| B Max. digging depth         | m | 6.95  | 7.25  | 7.60  | 8.30  |
| C Min. dumping height        | m | 3.14  | 2.84  | 2.49  | 1.79  |
| D Max. dumping height        | m | 6.73  | 6.80  | 6.93  | 6.95  |
| E Max. cutting height        | m | 10.35 | 10.40 | 10.53 | 10.47 |

## Forces

| without quick coupler            | 1  | 2   | 3   | 4   |     |
|----------------------------------|----|-----|-----|-----|-----|
| Stick digging force (ISO 6015)   | kN | 212 | 198 | 183 | 159 |
| Bucket digging force (ISO 6015)  | kN | 238 | 238 | 238 | 238 |
| Stick digging force (SAE J1179)  | kN | 202 | 189 | 176 | 154 |
| Bucket digging force (SAE J1179) | kN | 210 | 210 | 210 | 210 |

## Operating weight and ground pressure

The operating weight includes the basic machine with counterweight 8.4t, mono boom 6.45 m, stick 3.25 m and bucket 2.15 m<sup>3</sup> (1,770 kg).

| Undercarriage   | S-HD               |        |        |        |
|-----------------|--------------------|--------|--------|--------|
| Pad width       | mm                 | 600    | 750    | 900    |
| Weight          | kg                 | 40,800 | 42,050 | 42,900 |
| Ground pressure | kg/cm <sup>2</sup> | 0.72   | 0.59   | 0.50   |

| Undercarriage   | LC-V               |        |        |        |
|-----------------|--------------------|--------|--------|--------|
| Pad width       | mm                 | 600    | 750    | 900    |
| Weight          | kg                 | 43,200 | 44,450 | 45,300 |
| Ground pressure | kg/cm <sup>2</sup> | 0.76   | 0.63   | 0.53   |

The operating weight includes the basic machine with counterweight 9.4t, mono boom 6.45 m, stick 3.25 m and bucket 2.15 m<sup>3</sup> (1,770 kg).

| Undercarriage   | S-HD               |        |        |        |
|-----------------|--------------------|--------|--------|--------|
| Pad width       | mm                 | 600    | 750    | 900    |
| Weight          | kg                 | 41,800 | 43,050 | 43,900 |
| Ground pressure | kg/cm <sup>2</sup> | 0.74   | 0.61   | 0.51   |

| Undercarriage   | LC-V               |        |        |        |
|-----------------|--------------------|--------|--------|--------|
| Pad width       | mm                 | 600    | 750    | 900    |
| Weight          | kg                 | 44,200 | 45,450 | 46,300 |
| Ground pressure | kg/cm <sup>2</sup> | 0.78   | 0.64   | 0.54   |



**Buckets** Machine stability per ISO 10567\* (75% of tipping capacity)

| Cutting width<br>mm             | Capacity<br>ISO 7451<br>m <sup>3</sup> | Weight <sup>3)</sup><br>kg | Weight <sup>4)</sup><br>kg | S-HD undercarriage<br>(with track pads 600 mm) |      |      |      |                    |      |      |      | LC-V undercarriage<br>(with track pads 600 mm) |      |      |      |                    |   |   |   |   |
|---------------------------------|--|----------------------------|----------------------------|--|------|------|------|--------------------|------|------|------|--|------|------|------|--------------------|---|---|---|---|
|                                 |  |                            |                            | without quick coupler                          |      |      |      | with quick coupler |      |      |      | without quick coupler                          |      |      |      | with quick coupler |   |   |   |   |
|                                 |  |                            |                            | Stick length (m)                               |      |      |      |                    |      |      |      | Stick length (m)                               |      |      |      |                    |   |   |   |   |
| 2.60                            | 2.90                                   | 3.25                       | 3.95                       | 2.60   | 2.90 | 3.25 | 3.95 | 2.60               | 2.90 | 3.25 | 3.95 | 2.60   | 2.90 | 3.25 | 3.95 |                    |   |   |   |   |
| <b>with counterweight 8.4 t</b> |  |                            |                            |  |      |      |      |                    |      |      |      |  |      |      |      |                    |   |   |   |   |
| STD <sup>1)</sup>               | 1,650                                  | 2.00                       | 1,730                      | 1,690  | ▲    | ▲    | ▲    | ▲                  | ▲    | ▲    | ▲    | ▲  | ▲    | ▲    | ▲    | ▲                  | ▲ | ▲ | ▲ | ▲ |
|                                 | 1,600                                  | 2.15                       | 1,770                      | 1,730  | ▲    | ▲    | ▲    | ▲                  | ▲    | ▲    | ▲    | ▲  | ▲    | ▲    | ▲    | ▲                  | ▲ | ▲ | ▲ | ▲ |
|                                 | 1,650                                  | 2.25                       | 1,810                      | 1,770  | ▲    | ▲    | ▲    | ■                  | ▲    | ▲    | ▲    | ▲  | ▲    | ▲    | ▲    | ▲                  | ▲ | ▲ | ▲ | ▲ |
|                                 | 1,800                                  | 2.50                       | 1,900                      | 1,860  | ▲    | ▲    | ■    | ▲                  | ▲    | ▲    | ■    | ▲  | ▲    | ▲    | ▲    | ■                  | ▲ | ▲ | ▲ | ■ |
|                                 | 1,800                                  | 2.75                       | 1,970                      | 1,930  | ▲    | ■    | ▲    | ■                  | ▲    | ■    | ▲    | ■  | ▲    | ▲    | ■    | ▲                  | ▲ | ▲ | ■ | ▲ |
| 1,850                           | 3.00                                   | 2,020                      | 1,980                      | ■  | ▲    | ■    | △    | ■                  | ▲    | ■    | △    | ▲  | ■    | ▲    | ■    | ■                  | ■ | ▲ | ■ |   |
| HD <sup>2)</sup>                | 1,650                                  | 2.00                       | 1,830                      | 1,790  | ▲    | ▲    | ▲    | ▲                  | ▲    | ▲    | ▲    | ▲  | ▲    | ▲    | ▲    | ▲                  | ▲ | ▲ | ▲ | ▲ |
|                                 | 1,600                                  | 2.15                       | 1,870                      | 1,830  | ▲    | ▲    | ▲    | ▲                  | ▲    | ▲    | ▲    | ■  | ▲    | ▲    | ▲    | ▲                  | ▲ | ▲ | ▲ | ▲ |
|                                 | 1,650                                  | 2.25                       | 1,910                      | 1,870  | ▲    | ▲    | ▲    | ■                  | ▲    | ▲    | ▲    | ▲  | ▲    | ▲    | ▲    | ▲                  | ▲ | ▲ | ▲ | ▲ |
|                                 | 1,800                                  | 2.50                       | 2,000                      | 1,960  | ▲    | ▲    | ■    | ▲                  | ▲    | ▲    | ■    | ▲  | ▲    | ▲    | ▲    | ■                  | ▲ | ▲ | ▲ | ■ |
|                                 | 1,800                                  | 2.75                       | 2,080                      | 2,040  | ▲    | ■    | ▲    | ▲                  | ■    | ■    | ▲    | △  | ▲    | ▲    | ■    | ▲                  | ▲ | ▲ | ■ | ■ |
| 1,850                           | 3.00                                   | 2,130                      | 2,090                      | ■  | ▲    | ■    | △    | ■                  | ▲    | ■    | △    | ■  | ■    | ▲    | ■    | ■                  | ■ | ▲ | △ |   |
| <b>with counterweight 9.4 t</b> |  |                            |                            |  |      |      |      |                    |      |      |      |  |      |      |      |                    |   |   |   |   |
| STD <sup>1)</sup>               | 1,650                                  | 2.00                       | 1,730                      | 1,690  | ▲    | ▲    | ▲    | ▲                  | ▲    | ▲    | ▲    | ▲  | ▲    | ▲    | ▲    | ▲                  | ▲ | ▲ | ▲ | ▲ |
|                                 | 1,600                                  | 2.15                       | 1,770                      | 1,730  | ▲    | ▲    | ▲    | ▲                  | ▲    | ▲    | ▲    | ▲  | ▲    | ▲    | ▲    | ▲                  | ▲ | ▲ | ▲ | ▲ |
|                                 | 1,650                                  | 2.25                       | 1,810                      | 1,770  | ▲    | ▲    | ▲    | ▲                  | ▲    | ▲    | ▲    | ▲  | ▲    | ▲    | ▲    | ▲                  | ▲ | ▲ | ▲ | ▲ |
|                                 | 1,800                                  | 2.50                       | 1,900                      | 1,860  | ▲    | ▲    | ▲    | ■                  | ▲    | ▲    | ▲    | ■  | ▲    | ▲    | ▲    | ▲                  | ▲ | ▲ | ▲ | ▲ |
|                                 | 1,800                                  | 2.75                       | 1,970                      | 1,930  | ▲    | ▲    | ■    | ▲                  | ▲    | ▲    | ■    | ▲  | ▲    | ▲    | ▲    | ■                  | ▲ | ▲ | ▲ | ■ |
| 1,850                           | 3.00                                   | 2,020                      | 1,980                      | ▲  | ■    | ▲    | ■    | ▲                  | ■    | ▲    | ■    | ▲  | ▲    | ■    | ▲    | ▲                  | ▲ | ■ | ▲ |   |
| HD <sup>2)</sup>                | 1,650                                  | 2.00                       | 1,830                      | 1,790  | ▲    | ▲    | ▲    | ▲                  | ▲    | ▲    | ▲    | ▲  | ▲    | ▲    | ▲    | ▲                  | ▲ | ▲ | ▲ | ▲ |
|                                 | 1,600                                  | 2.15                       | 1,870                      | 1,830  | ▲    | ▲    | ▲    | ▲                  | ▲    | ▲    | ▲    | ▲  | ▲    | ▲    | ▲    | ▲                  | ▲ | ▲ | ▲ | ▲ |
|                                 | 1,650                                  | 2.25                       | 1,910                      | 1,870  | ▲    | ▲    | ▲    | ▲                  | ▲    | ▲    | ▲    | ▲  | ▲    | ▲    | ▲    | ▲                  | ▲ | ▲ | ▲ | ▲ |
|                                 | 1,800                                  | 2.50                       | 2,000                      | 1,960  | ▲    | ▲    | ▲    | ■                  | ▲    | ▲    | ▲    | ■  | ▲    | ▲    | ▲    | ▲                  | ▲ | ▲ | ▲ | ■ |
|                                 | 1,800                                  | 2.75                       | 2,080                      | 2,040  | ▲    | ▲    | ■    | ▲                  | ▲    | ▲    | ■    | ▲  | ▲    | ▲    | ▲    | ■                  | ▲ | ▲ | ▲ | ▲ |
| 1,850                           | 3.00                                   | 2,130                      | 2,090                      | ▲  | ■    | ▲    | ■    | ■                  | ■    | ▲    | ■    | ▲  | ▲    | ■    | ▲    | ▲                  | ▲ | ■ | ■ |   |

\* Indicated loads are based on ISO 10567, at maximum reach, and may be swung 360° on firm and even ground

<sup>1)</sup> Standard bucket with teeth Z 50

<sup>2)</sup> HD bucket with teeth Z 50

<sup>3)</sup> Bucket for direct mounting

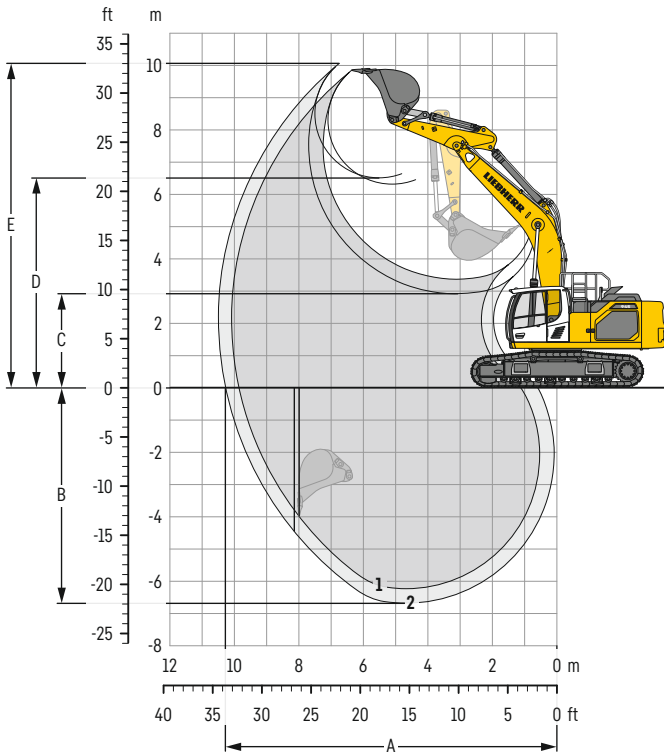
<sup>4)</sup> Bucket for mounting to quick coupler SWA 66 (430 kg)

Other buckets available upon request

Max. material weight ▲ = ≤ 2.0t/m<sup>3</sup>, ■ = ≤ 1.8t/m<sup>3</sup>, ▲ = ≤ 1.65t/m<sup>3</sup>, ■ = ≤ 1.5t/m<sup>3</sup>, △ = ≤ 1.2t/m<sup>3</sup>

# Backhoe bucket

with mono boom SME 6.15 m



## Digging envelope

| without quick coupler        |   | 1    | 2     |
|------------------------------|---|------|-------|
| Stick length                 | m | 2.15 | 2.60  |
|                              |   | SME  | SME   |
| A Max. reach at ground level | m | 9.86 | 10.28 |
| B Max. digging depth         | m | 6.23 | 6.68  |
| C Min. dumping height        | m | 3.37 | 2.92  |
| D Max. dumping height        | m | 6.32 | 6.61  |
| E Max. cutting height        | m | 9.86 | 10.06 |

## Forces

| without quick coupler            |    | 1   | 2   |
|----------------------------------|----|-----|-----|
| Stick digging force (ISO 6015)   | kN | 238 | 212 |
| Bucket digging force (ISO 6015)  | kN | 264 | 264 |
| Stick digging force (SAE J1179)  | kN | 226 | 202 |
| Bucket digging force (SAE J1179) | kN | 233 | 233 |

## Operating weight and ground pressure

The operating weight includes the basic machine with counterweight 8.4 t, mono boom SME 6.15 m, stick SME 2.15 m and HD bucket 2.50 m<sup>3</sup> (2,000 kg).

| Undercarriage   |                    | S-HD   |        |        |
|-----------------|--------------------|--------|--------|--------|
| Pad width       | mm                 | 600    | 750    | 900    |
| Weight          | kg                 | 40,900 | 42,150 | 43,000 |
| Ground pressure | kg/cm <sup>2</sup> | 0.72   | 0.59   | 0.50   |

| Undercarriage   |                    | LC-V   |        |        |
|-----------------|--------------------|--------|--------|--------|
| Pad width       | mm                 | 600    | 750    | 900    |
| Weight          | kg                 | 43,300 | 44,550 | 45,400 |
| Ground pressure | kg/cm <sup>2</sup> | 0.76   | 0.63   | 0.53   |

The operating weight includes the basic machine with counterweight 9.4 t, mono boom SME 6.15 m, stick SME 2.15 m and HD bucket 2.50 m<sup>3</sup> (2,000 kg).

| Undercarriage   |                    | S-HD   |        |        |
|-----------------|--------------------|--------|--------|--------|
| Pad width       | mm                 | 600    | 750    | 900    |
| Weight          | kg                 | 41,900 | 43,150 | 44,000 |
| Ground pressure | kg/cm <sup>2</sup> | 0.74   | 0.61   | 0.52   |

| Undercarriage   |                    | LC-V   |        |        |
|-----------------|--------------------|--------|--------|--------|
| Pad width       | mm                 | 600    | 750    | 900    |
| Weight          | kg                 | 44,300 | 45,550 | 46,400 |
| Ground pressure | kg/cm <sup>2</sup> | 0.78   | 0.64   | 0.54   |

**Buckets** Machine stability per ISO 10567\* (75% of tipping capacity)

| Cutting width<br>mm             | Capacity<br>ISO 7451<br>m <sup>3</sup> | Weight <sup>3)</sup><br>kg | Weight <sup>4)</sup><br>kg | S-HD undercarriage<br>(with track pads 600 mm) |      |                    |      | LC-V undercarriage<br>(with track pads 600 mm) |   |                    |   |
|---------------------------------|--|----------------------------|----------------------------|--|------|--------------------|------|--|---|--------------------|---|
|                                 |  |                            |                            | Stick length (m)                               |      |                    |      | Stick length (m)                               |   |                    |   |
|                                 |  |                            |                            | without quick coupler                          |      | with quick coupler |      | without quick coupler                          |   | with quick coupler |   |
| 2.15                            | 2.60                                   | 2.15                       | 2.60                       | 2.15   | 2.60 | 2.15               | 2.60 |  |   |                    |   |
| <b>with counterweight 8.4 t</b> |  |                            |                            |  |      |                    |      |  |   |                    |   |
| HD <sup>1)</sup>                | 1,600                                  | 2.15                       | 1,870                      | 1,830  | ▲    | ▲                  | ▲    | ▲  | ▲ | ▲                  | ▲ |
|                                 | 1,650                                  | 2.25                       | 1,910                      | 1,870  | ▲    | ▲                  | ▲    | ▲  | ▲ | ▲                  | ▲ |
|                                 | 1,800                                  | 2.50                       | 2,000                      | 1,960  | ▲    | ▲                  | ▲    | ▲  | ▲ | ▲                  | ▲ |
|                                 | 1,800                                  | 2.75                       | 2,080                      | 2,040  | ▲    | ▲                  | ▲    | ▲  | ▲ | ▲                  | ▲ |
|                                 | 1,850                                  | 3.00                       | 2,130                      | 2,090  | ▲    | ■                  | ▲    | ■  | ▲ | ▲                  | ▲ |
| HDR <sup>2)</sup>               | 1,650                                  | 2.00                       | 2,490                      | 2,530  | ▲    | ▲                  | ▲    | ▲  | ▲ | ▲                  | ▲ |
|                                 | 1,650                                  | 2.25                       | 2,570                      | 2,610  | ▲    | ▲                  | ▲    | ▲  | ▲ | ▲                  | ▲ |
|                                 | 1,650                                  | 2.50                       | 2,660                      | 2,700  | ▲    | ▲                  | ▲    | ▲  | ▲ | ▲                  | ▲ |
| <b>with counterweight 9.4 t</b> |  |                            |                            |  |      |                    |      |  |   |                    |   |
| HD <sup>1)</sup>                | 1,600                                  | 2.15                       | 1,870                      | 1,830  | ▲    | ▲                  | ▲    | ▲  | ▲ | ▲                  | ▲ |
|                                 | 1,650                                  | 2.25                       | 1,910                      | 1,870  | ▲    | ▲                  | ▲    | ▲  | ▲ | ▲                  | ▲ |
|                                 | 1,800                                  | 2.50                       | 2,000                      | 1,960  | ▲    | ▲                  | ▲    | ▲  | ▲ | ▲                  | ▲ |
|                                 | 1,800                                  | 2.75                       | 2,080                      | 2,040  | ▲    | ▲                  | ▲    | ▲  | ▲ | ▲                  | ▲ |
|                                 | 1,850                                  | 3.00                       | 2,130                      | 2,090  | ▲    | ▲                  | ▲    | ▲  | ▲ | ▲                  | ▲ |
| HDR <sup>2)</sup>               | 1,650                                  | 2.00                       | 2,490                      | 2,530  | ▲    | ▲                  | ▲    | ▲  | ▲ | ▲                  | ▲ |
|                                 | 1,650                                  | 2.25                       | 2,570                      | 2,610  | ▲    | ▲                  | ▲    | ▲  | ▲ | ▲                  | ▲ |
|                                 | 1,650                                  | 2.50                       | 2,660                      | 2,700  | ▲    | ▲                  | ▲    | ▲  | ▲ | ▲                  | ▲ |

\* Indicated loads are based on ISO 10567, at maximum reach, and may be swung 360° on firm and even ground

<sup>1)</sup> HD bucket with teeth Z 50

<sup>2)</sup> HDR bucket with teeth Z 70

<sup>3)</sup> Bucket for direct mounting

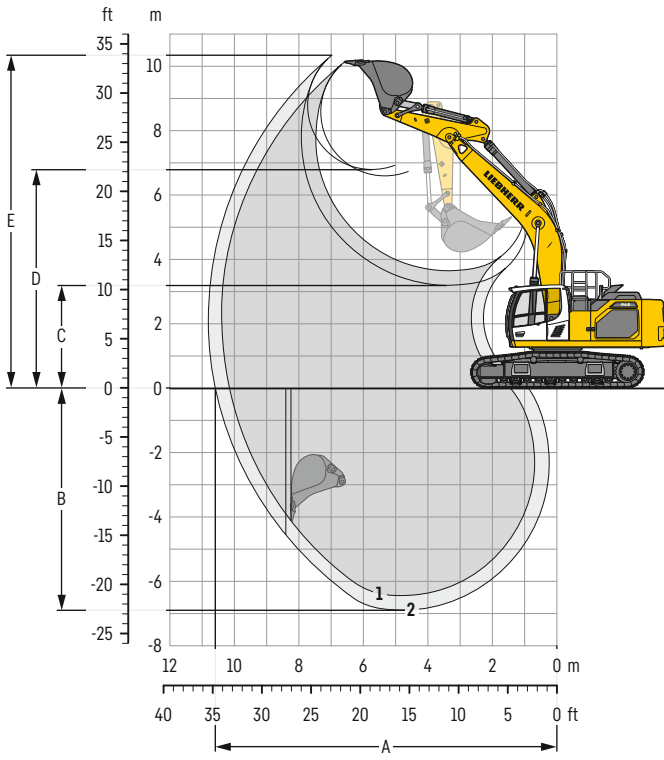
<sup>4)</sup> Bucket for mounting to quick coupler SWA 66 (430 kg)

Other buckets available upon request

Max. material weight ▲ = ≤ 2.0t/m<sup>3</sup>, ■ = ≤ 1.8t/m<sup>3</sup>

# Backhoe bucket

with mono boom SME 6.45 m



## Digging envelope

| without quick coupler        |   | 1     | 2     |
|------------------------------|---|-------|-------|
| Stick length                 | m | 2.15  | 2.60  |
|                              |   | SME   | SME   |
| A Max. reach at ground level | m | 10.17 | 10.58 |
| B Max. digging depth         | m | 6.44  | 6.89  |
| C Min. dumping height        | m | 3.65  | 3.20  |
| D Max. dumping height        | m | 6.60  | 6.79  |
| E Max. cutting height        | m | 10.13 | 10.34 |

## Forces

| without quick coupler            |    | 1   | 2   |
|----------------------------------|----|-----|-----|
| Stick digging force (ISO 6015)   | kN | 238 | 212 |
| Bucket digging force (ISO 6015)  | kN | 264 | 264 |
| Stick digging force (SAE J1179)  | kN | 226 | 202 |
| Bucket digging force (SAE J1179) | kN | 233 | 233 |

## Operating weight and ground pressure

The operating weight includes the basic machine with counterweight 8.4 t, mono boom SME 6.45 m, stick SME 2.60 m and HD bucket 2.25 m<sup>3</sup> (1,910 kg).

| Undercarriage   |                    | S-HD   |        |        |
|-----------------|--------------------|--------|--------|--------|
| Pad width       | mm                 | 600    | 750    | 900    |
| Weight          | kg                 | 41,050 | 42,300 | 43,150 |
| Ground pressure | kg/cm <sup>2</sup> | 0.72   | 0.60   | 0.51   |

| Undercarriage   |                    | LC-V   |        |        |
|-----------------|--------------------|--------|--------|--------|
| Pad width       | mm                 | 600    | 750    | 900    |
| Weight          | kg                 | 43,450 | 44,700 | 45,550 |
| Ground pressure | kg/cm <sup>2</sup> | 0.77   | 0.63   | 0.53   |

The operating weight includes the basic machine with counterweight 9.4 t, mono boom SME 6.45 m, stick SME 2.60 m and HD bucket 2.25 m<sup>3</sup> (1,910 kg).

| Undercarriage   |                    | S-HD   |        |        |
|-----------------|--------------------|--------|--------|--------|
| Pad width       | mm                 | 600    | 750    | 900    |
| Weight          | kg                 | 42,050 | 43,300 | 44,150 |
| Ground pressure | kg/cm <sup>2</sup> | 0.74   | 0.61   | 0.52   |

| Undercarriage   |                    | LC-V   |        |        |
|-----------------|--------------------|--------|--------|--------|
| Pad width       | mm                 | 600    | 750    | 900    |
| Weight          | kg                 | 44,450 | 45,700 | 46,550 |
| Ground pressure | kg/cm <sup>2</sup> | 0.78   | 0.64   | 0.55   |

**Buckets** Machine stability per ISO 10567\* (75% of tipping capacity)

| Cutting width<br>mm             | Capacity<br>ISO 7451<br>m <sup>3</sup> | Weight <sup>3)</sup><br>kg | Weight <sup>4)</sup><br>kg | S-HD undercarriage<br>(with track pads 600 mm) |      |                    |      | LC-V undercarriage<br>(with track pads 600 mm) |   |                    |   |
|---------------------------------|--|----------------------------|----------------------------|--|------|--------------------|------|--|---|--------------------|---|
|                                 |  |                            |                            | Stick length (m)                               |      |                    |      | Stick length (m)                               |   |                    |   |
|                                 |  |                            |                            | without quick coupler                          |      | with quick coupler |      | without quick coupler                          |   | with quick coupler |   |
| 2.15                            | 2.60                                   | 2.15                       | 2.60                       | 2.15   | 2.60 | 2.15               | 2.60 |  |   |                    |   |
| <b>with counterweight 8.4 t</b> |  |                            |                            |  |      |                    |      |  |   |                    |   |
| HD <sup>1)</sup>                | 1,600                                  | 2.15                       | 1,870                      | 1,830  | ▲    | ▲                  | ▲    | ▲  | ▲ | ▲                  | ▲ |
|                                 | 1,650                                  | 2.25                       | 1,910                      | 1,870  | ▲    | ▲                  | ▲    | ▲  | ▲ | ▲                  | ▲ |
|                                 | 1,800                                  | 2.50                       | 2,000                      | 1,960  | ▲    | ▲                  | ▲    | ▲  | ▲ | ▲                  | ▲ |
|                                 | 1,800                                  | 2.75                       | 2,080                      | 2,040  | ▲    | ■                  | ▲    | ■  | ▲ | ▲                  | ▲ |
|                                 | 1,850                                  | 3.00                       | 2,130                      | 2,090  | ■    | ▲                  | ■    | ▲  | ▲ | ■                  | ■ |
| HDR <sup>2)</sup>               | 1,650                                  | 2.00                       | 2,490                      | 2,530  | ▲    | ▲                  | ▲    | ▲  | ▲ | ▲                  | ▲ |
|                                 | 1,650                                  | 2.25                       | 2,570                      | 2,610  | ▲    | ▲                  | ▲    | ▲  | ▲ | ▲                  | ▲ |
|                                 | 1,650                                  | 2.50                       | 2,660                      | 2,700  | ▲    | ■                  | ▲    | ■  | ▲ | ▲                  | ▲ |
| <b>with counterweight 9.4 t</b> |  |                            |                            |  |      |                    |      |  |   |                    |   |
| HD <sup>1)</sup>                | 1,600                                  | 2.15                       | 1,870                      | 1,830  | ▲    | ▲                  | ▲    | ▲  | ▲ | ▲                  | ▲ |
|                                 | 1,650                                  | 2.25                       | 1,910                      | 1,870  | ▲    | ▲                  | ▲    | ▲  | ▲ | ▲                  | ▲ |
|                                 | 1,800                                  | 2.50                       | 2,000                      | 1,960  | ▲    | ▲                  | ▲    | ▲  | ▲ | ▲                  | ▲ |
|                                 | 1,800                                  | 2.75                       | 2,080                      | 2,040  | ▲    | ▲                  | ▲    | ▲  | ▲ | ▲                  | ▲ |
|                                 | 1,850                                  | 3.00                       | 2,130                      | 2,090  | ▲    | ■                  | ▲    | ■  | ▲ | ▲                  | ▲ |
| HDR <sup>2)</sup>               | 1,650                                  | 2.00                       | 2,490                      | 2,530  | ▲    | ▲                  | ▲    | ▲  | ▲ | ▲                  | ▲ |
|                                 | 1,650                                  | 2.25                       | 2,570                      | 2,610  | ▲    | ▲                  | ▲    | ▲  | ▲ | ▲                  | ▲ |
|                                 | 1,650                                  | 2.50                       | 2,660                      | 2,700  | ▲    | ▲                  | ▲    | ▲  | ▲ | ▲                  | ▲ |

\* Indicated loads are based on ISO 10567, at maximum reach, and may be swung 360° on firm and even ground

<sup>1)</sup> HD bucket with teeth Z 50

<sup>2)</sup> HDR bucket with teeth Z 70

<sup>3)</sup> Bucket for direct mounting

<sup>4)</sup> Bucket for mounting to quick coupler SWA 66 (430 kg)

Other buckets available upon request

Max. material weight ▲ = ≤ 2.0t/m<sup>3</sup>, ■ = ≤ 1.8t/m<sup>3</sup>, ▲ = ≤ 1.65t/m<sup>3</sup>

# Lift capacities

with mono boom 6.45 m, counterweight 8.4 t and track pads 600 mm

## Stick 2.60 m

| Under-carriage<br>m | 3.0m  |       | 4.5m  |       | 6.0m  |       | 7.5m |       | 9.0m |      | m     |     |
|---------------------|-------|-------|-------|-------|-------|-------|------|-------|------|------|-------|-----|
|                     |       |       |       |       |       |       |      |       |      |      |       |     |
| 9.0                 |       |       |       |       |       |       |      |       |      |      |       |     |
| 7.5                 |       |       |       |       |       |       |      |       |      |      |       |     |
| 6.0                 |       |       |       |       | 10.0* | 10.0* |      |       |      | 9.8* | 9.8*  | 6.9 |
| 4.5                 |       |       |       |       | 10.6* | 10.6* | 8.9  | 9.7*  |      | 8.1  | 9.6*  | 7.9 |
| 3.0                 |       |       | 15.4* | 15.4* | 11.9* | 11.9* | 8.6  | 10.2* |      | 7.1  | 9.6*  | 8.5 |
| 1.5                 |       |       | 17.2  | 18.5* | 11.4  | 13.3* | 8.3  | 10.9* |      | 6.6  | 9.7*  | 8.8 |
| 0                   |       |       | 16.4  | 16.6* | 10.9  | 14.3* | 8.1  | 11.4* |      | 6.5  | 9.7   | 8.8 |
| -1.5                | 15.4* | 15.4* | 16.2  | 19.6* | 10.7  | 14.7* | 7.9  | 11.6* |      | 6.7  | 10.0* | 8.6 |
| -3.0                | 20.0* | 20.0* | 16.3  | 18.3* | 10.6  | 14.1* | 7.9  | 11.1* |      | 7.3  | 10.1* | 8.0 |
| -4.5                |       |       | 16.0* | 16.0* | 10.8  | 12.5* |      |       |      | 8.6  | 10.1* | 7.1 |
| -6.0                |       |       | 11.9* | 11.9* |       |       |      |       |      | 9.4* | 9.4*  | 5.7 |
| 9.0                 |       |       |       |       | 10.0* | 10.0* |      |       |      | 9.8* | 9.8*  | 6.9 |
| 7.5                 |       |       |       |       | 10.7* | 10.7* | 9.4  | 9.7*  |      | 8.5  | 9.6*  | 7.9 |
| 6.0                 |       |       | 15.7* | 15.7* | 12.0* | 12.0* | 9.1  | 10.2* |      | 7.5  | 9.6*  | 8.5 |
| 4.5                 |       |       | 18.2  | 18.7* | 12.1  | 13.4* | 8.8  | 10.9* |      | 7.1  | 9.7*  | 8.8 |
| 3.0                 |       |       | 16.7* | 16.7* | 11.6  | 14.4* | 8.6  | 11.4* |      | 6.9  | 9.8*  | 8.8 |
| 1.5                 |       |       | 17.3  | 19.5* | 11.4  | 14.6* | 8.4  | 11.6* |      | 7.2  | 10.0* | 8.6 |
| 0                   |       |       | 16.4* | 16.4* | 11.4  | 14.0* | 8.4  | 11.0* |      | 7.8  | 10.1* | 8.0 |
| -1.5                | 19.6* | 19.6* | 17.4  | 18.2* | 11.5  | 12.3* |      |       |      | 9.4  | 10.1* | 7.1 |
| -3.0                |       |       | 15.8* | 15.8* |       |       |      |       |      | 9.2* | 9.2*  | 5.7 |
| -4.5                |       |       | 11.4* | 11.4* |       |       |      |       |      |      |       |     |
| -6.0                |       |       |       |       |       |       |      |       |      |      |       |     |

## Stick 2.90 m

| Under-carriage<br>m | 3.0m  |       | 4.5m  |       | 6.0m  |       | 7.5m  |       | 9.0m |      | m   |      |      |      |     |
|---------------------|-------|-------|-------|-------|-------|-------|-------|-------|------|------|-----|------|------|------|-----|
|                     |       |       |       |       |       |       |       |       |      |      |     |      |      |      |     |
| 9.0                 |       |       |       |       |       |       |       |       |      |      |     |      |      |      |     |
| 7.5                 |       |       |       |       |       |       |       |       |      |      |     |      |      |      |     |
| 6.0                 |       |       |       |       |       |       | 10.2* | 10.2* | 8.9  | 9.3* |     | 9.3* | 9.3* | 7.2  |     |
| 4.5                 |       |       |       |       |       |       | 10.6* | 10.6* | 8.9  | 9.3* |     | 7.7  | 9.1* | 8.2  |     |
| 3.0                 |       |       | 14.6* | 14.6* | 11.5* | 11.5* | 8.7   | 9.9*  |      |      |     | 6.8  | 9.2* | 8.7  |     |
| 1.5                 |       |       | 17.4  | 17.8* | 11.5  | 13.0* | 8.3   | 10.6* | 6.4  | 9.3* |     | 6.4  | 9.3* | 9.0  |     |
| 0                   |       |       | 16.5  | 19.6* | 10.9  | 14.1* | 8.1   | 11.2* | 6.3  | 9.4  |     | 6.2  | 9.3  | 9.0  |     |
| -1.5                | 15.4* | 15.4* | 16.2  | 19.7* | 10.6  | 14.6* | 7.9   | 11.5* |      |      |     | 6.4  | 9.6  | 8.8  |     |
| -3.0                | 21.5* | 21.5* | 16.2  | 18.7* | 10.6  | 14.2* | 7.8   | 11.2* |      |      |     | 6.9  | 9.8* | 8.3  |     |
| -4.5                |       |       | 16.2* | 16.2* | 13.0* | 13.0* | 9.6*  | 9.6*  |      |      |     | 8.0  | 9.9* | 7.5  |     |
| -6.0                |       |       |       |       |       |       |       |       |      |      |     | 9.5* | 9.5* | 6.1  |     |
| 9.0                 |       |       |       |       |       |       |       |       |      |      |     |      |      |      |     |
| 7.5                 |       |       |       |       |       |       |       |       |      |      |     | 9.2* | 9.2* | 7.2  |     |
| 6.0                 |       |       |       |       |       |       | 10.3* | 10.3* | 9.4* | 9.4* |     | 8.1  | 9.1* | 8.2  |     |
| 4.5                 |       |       | 14.9* | 14.9* | 11.6* | 11.6* | 9.2   | 9.9*  |      |      |     | 7.2  | 9.2* | 8.7  |     |
| 3.0                 |       |       | 18.1* | 18.1* | 12.1  | 13.1* | 8.9   | 10.7* |      |      | 6.8 | 9.3* | 6.8  | 9.3* | 9.0 |
| 1.5                 |       |       | 17.5  | 19.7* | 11.6  | 14.2* | 8.6   | 11.3* | 6.7  | 9.5* |     | 6.7  | 9.5* | 9.0  |     |
| 0                   |       |       | 17.3  | 19.7* | 11.4  | 14.6* | 8.4   | 11.5* |      |      |     | 6.8  | 9.7* | 8.8  |     |
| -1.5                | 16.1* | 16.1* | 17.3  | 18.6* | 11.3  | 14.2* | 8.4   | 11.1* |      |      |     | 7.4  | 9.9* | 8.3  |     |
| -3.0                | 21.1* | 21.1* | 16.4* | 16.4* | 11.4  | 12.7* |       |       |      |      |     | 8.8  | 9.9* | 7.5  |     |
| -4.5                |       |       | 12.5* | 12.5* |       |       |       |       |      |      |     | 9.4* | 9.4* | 6.1  |     |
| -6.0                |       |       |       |       |       |       |       |       |      |      |     |      |      |      |     |

## Stick 3.25 m

| Under-carriage<br>m | 3.0m  |       | 4.5m  |       | 6.0m  |       | 7.5m |       | 9.0m |      | m    |      |     |  |
|---------------------|-------|-------|-------|-------|-------|-------|------|-------|------|------|------|------|-----|--|
|                     |       |       |       |       |       |       |      |       |      |      |      |      |     |  |
| 9.0                 |       |       |       |       |       |       |      |       |      |      |      |      |     |  |
| 7.5                 |       |       |       |       |       |       | 8.8* | 8.8*  |      | 8.1* | 8.1* | 7.6  |     |  |
| 6.0                 |       |       |       |       |       |       | 8.9* | 8.9*  |      | 7.2  | 8.0* | 8.5  |     |  |
| 4.5                 | 20.8* | 20.8* | 13.7* | 13.7* | 10.9* | 10.9* | 8.7  | 9.5*  | 6.5  | 8.7* | 6.4  | 8.1* | 9.1 |  |
| 3.0                 |       |       | 17.0* | 17.0* | 11.5  | 12.5* | 8.3  | 10.3* | 6.4  | 9.0* | 6.0  | 8.5* | 9.3 |  |
| 1.5                 |       |       | 16.5  | 19.2* | 10.9  | 13.8* | 8.0  | 11.0* | 6.2  | 9.3* | 5.9  | 8.8  | 9.4 |  |
| 0                   | 7.5*  | 7.5*  | 16.1  | 19.7* | 10.6  | 14.4* | 7.8  | 11.4* | 6.1  | 9.2  | 6.0  | 9.0  | 9.1 |  |
| -1.5                | 14.8* | 14.8* | 16.0  | 18.9* | 10.4  | 14.3* | 7.7  | 11.2* |      |      | 6.4  | 9.4* | 8.6 |  |
| -3.0                | 22.9* | 22.9* | 16.2  | 17.2* | 10.5  | 13.2* | 7.8  | 10.1* |      |      | 7.4  | 9.6* | 7.8 |  |
| -4.5                | 18.0* | 18.0* | 13.9* | 13.9* | 10.6* | 10.6* |      |       |      |      | 9.4* | 9.4* | 6.6 |  |
| -6.0                |       |       |       |       |       |       |      |       |      |      |      |      |     |  |
| 9.0                 |       |       |       |       |       |       |      |       |      | 8.6* | 8.6* |      |     |  |
| 7.5                 |       |       |       |       |       |       | 8.7* | 8.7*  |      | 8.1* | 8.1* | 7.6  |     |  |
| 6.0                 |       |       |       |       | 9.7*  | 9.7*  | 8.9* | 8.9*  |      | 7.6  | 8.0* | 8.5  |     |  |
| 4.5                 | 21.7* | 21.7* | 14.0* | 14.0* | 11.1* | 11.1* | 9.2  | 9.6*  | 6.9  | 8.7* | 6.8  | 8.1* | 9.1 |  |
| 3.0                 |       |       | 17.2* | 17.2* | 12.2  | 12.6* | 8.8  | 10.3* | 6.8  | 9.0* | 6.4  | 8.6* | 9.3 |  |
| 1.5                 |       |       | 17.6  | 19.3* | 11.6  | 13.8* | 8.5  | 11.0* | 6.6  | 9.3* | 6.3  | 9.0* | 9.4 |  |
| 0                   | 8.2*  | 8.2*  | 17.2  | 19.6* | 11.3  | 14.4* | 8.3  | 11.4* | 6.5  | 9.3* | 6.4  | 9.2* | 9.1 |  |
| -1.5                | 15.5* | 15.5* | 17.1  | 18.8* | 11.2  | 14.2* | 8.2  | 11.2* |      |      | 6.9  | 9.4* | 8.6 |  |
| -3.0                | 22.6* | 22.6* | 17.0* | 17.0* | 11.2  | 13.0* | 8.3  | 10.0* |      |      | 8.1  | 9.6* | 7.8 |  |
| -4.5                | 17.5* | 17.5* | 13.6* | 13.6* | 10.2* | 10.2* |      |       |      |      | 9.3* | 9.3* | 6.6 |  |
| -6.0                |       |       |       |       |       |       |      |       |      |      |      |      |     |  |

## Stick 3.95 m

| Under-carriage<br>m | 3.0m  |       | 4.5m  |       | 6.0m  |       | 7.5m |       | 9.0m |      | m |      |      |     |
|---------------------|-------|-------|-------|-------|-------|-------|------|-------|------|------|---|------|------|-----|
|                     |       |       |       |       |       |       |      |       |      |      |   |      |      |     |
| 9.0                 |       |       |       |       |       |       |      |       |      |      |   |      |      |     |
| 7.5                 |       |       |       |       |       |       | 7.7* | 7.7*  |      |      |   | 6.7* | 6.7* |     |
| 6.0                 |       |       |       |       |       |       | 8.0* | 8.0*  | 6.7  | 6.8* |   | 6.3* | 6.3* | 8.3 |
| 4.5                 |       |       |       |       |       |       | 8.7* | 8.7*  | 6.5  | 8.0* |   | 5.8  | 6.5* | 9.6 |
| 3.0                 | 13.0* | 13.0* | 15.3* | 15.3* | 11.5* | 11.5* | 8.3  | 9.6*  | 6.3  | 8.5* |   | 5.5  | 6.8* | 9.9 |
| 1.5                 | 7.1*  | 7.1*  | 16.7  | 18.0* | 11.0  | 13.0* | 8.0  | 10.4* | 6.1  | 8.9* |   | 5.3  | 7.3* | 9.9 |
| 0                   | 10.0* | 10.0* | 16.0  | 19.3* | 10.5  | 14.0* | 7.7  | 11.0* | 6.0  | 9.1  |   | 5.4  | 8.2  | 9.7 |
| -1.5                | 14.7* | 14.7* | 15.8  | 19.2* | 10.3  | 14.2* | 7.5  | 11.1* | 5.9  | 9.0  |   | 5.7  | 8.8  | 9.2 |
| -3.0                | 20.6* | 20.6* | 15.8  | 18.0* | 10.2  | 13.6* | 7.5  | 10.6* |      |      |   | 6.5  | 9.1* | 8.4 |
| -4.5                | 21.2* | 21.2* | 15.6* | 15.6* | 10.4  | 11.8* |      |       |      |      |   | 8.0  | 9.3* | 7.3 |
| -6.0                |       |       | 11.0* | 11.0* |       |       |      |       |      |      |   | 8.9* | 8.9* | 5.5 |
| 9.0                 |       |       |       |       |       |       |      |       |      |      |   |      |      |     |
| 7.5                 |       |       |       |       |       |       | 7.7* | 7.7*  |      |      |   | 6.7* | 6.7* | 8.3 |
| 6.0                 |       |       |       |       |       |       | 8.1* | 8.1*  | 7.0* | 7.0* |   | 6.3* | 6.3* | 9.1 |
| 4.5                 |       |       |       |       |       |       | 8.8* | 8.8*  | 6.9  | 8.1* |   | 6.2  | 6.5* | 9.6 |
| 3.0                 | 11.4* | 11.4* | 15.6* | 15.6* | 11.6* | 11.6* | 8.9  | 9.7*  | 6.7  | 8.5* |   | 5.8  | 6.8* | 9.9 |
| 1.5                 | 7.2*  | 7.2*  | 17.8  | 18.2* | 11.7  | 13.1* | 8.5  | 10.5* | 6.5  | 8.9* |   | 5.7  | 7.4* | 9.9 |
| 0                   | 10.4* | 10.4* | 17.1  | 19.3* | 11.2  | 14.0* | 8.2  | 11.0* | 6.4  | 9.2* |   | 5.8  | 8.4* | 9.7 |
| -1.5                | 15.1* | 15.1* | 16.9  | 19.2* | 11.0  | 14.2* | 8.1  | 11.1* | 6.3  | 9.0* |   | 6.2  | 8.8* | 9.2 |
| -3.0                | 21.2* | 21.2* | 16.9  | 17.9* | 11.0  | 13.5* | 8.1  | 10.5* |      |      |   | 7.0  | 9.1* | 8.4 |
| -4.5                | 20.7* | 20.7* | 15.3* | 15.3* | 11.2  | 11.6* |      |       |      |      |   | 8.8  | 9.3* | 7.3 |
| -6.0                |       |       | 10.4* | 10.4* |       |       |      |       |      |      |   | 8.8* | 8.8* | 5.5 |

Height Can be slewed through 360° In longitudinal position of undercarriage Max. reach \* Limited by hydr. capacity

The load values are quoted in tons (t) at stick end (without bucket), and may be swung 360° on firm and even ground. Adjacent values are valid for the undercarriage when in the longitudinal position. Capacities are valid for 600 mm wide track pads. Indicated loads are based on ISO 10567 standard and do not exceed 75% of tipping or 87% of hydraulic capacity (indicated via \*). Without bucket cylinder, link and lever the lift capacities will increase by 495 kg. Lifting capacity of the excavator is limited by machine stability and hydraulic capacity. According to European Standard, EN 474-5: In the European Union excavators have to be equipped with an overload warning device, a load diagram and automatic safety check valves on hoist cylinders and stick cylinder(s), when they are used for lifting operations which require the use of lifting accessories. Determine maximum load lift from load lift chart displayed in the operator's cab or from load lift chart detailed in the operator's manual supplied with the machine.

# Lift capacities

with mono boom 6.45 m, counterweight 9.4 t and track pads 600 mm

## Stick 2.60 m

| Under-carriage<br>m | 3.0m  |       | 4.5m  |       | 6.0m  |       | 7.5m  |       | 9.0m |       | m    |       |     |
|---------------------|-------|-------|-------|-------|-------|-------|-------|-------|------|-------|------|-------|-----|
|                     |       |       |       |       |       |       |       |       |      |       |      |       |     |
| 9.0                 |       |       |       |       |       |       |       |       |      |       |      |       |     |
| 7.5                 |       |       |       |       |       |       |       |       |      |       |      |       |     |
| 6.0                 |       |       |       |       | 10.0* | 10.0* |       |       |      | 9.8*  | 9.8* | 6.9   |     |
| 4.5                 |       |       |       |       | 10.6* | 10.6* | 9.4   | 9.7*  |      | 8.6   | 9.6* | 7.9   |     |
| 3.0                 |       |       |       |       | 15.4* | 15.4* | 11.9* | 11.9* | 9.2  | 10.2* | 7.6  | 9.6*  | 8.5 |
| 1.5                 |       |       |       |       | 18.3  | 18.5* | 12.2  | 13.3* | 8.9  | 10.9* | 7.1  | 9.7*  | 8.8 |
| 0                   |       |       |       |       | 16.6* | 16.6* | 11.7  | 14.3* | 8.6  | 11.4* | 7.0  | 9.8*  | 8.8 |
| -1.5                | 15.4* | 15.4* | 17.5  | 18.3* | 11.4  | 14.1* | 8.4   | 11.1* |      |       | 7.2  | 10.0* | 8.6 |
| -3.0                | 20.0* | 20.0* | 16.0* | 16.0* | 11.5  | 12.5* |       |       |      |       | 7.8  | 10.1* | 8.0 |
| -4.5                |       |       | 11.9* | 11.9* |       |       |       |       |      |       | 9.2  | 10.1* | 7.1 |
| -6.0                |       |       |       |       |       |       |       |       |      |       | 9.4* | 9.4*  | 5.7 |
| 9.0                 |       |       |       |       | 10.0* | 10.0* |       |       |      |       | 9.8* | 9.8*  | 6.9 |
| 7.5                 |       |       |       |       | 10.7* | 10.7* | 9.7*  | 9.7*  |      |       | 9.0  | 9.6*  | 7.9 |
| 6.0                 |       |       |       |       | 15.7* | 15.7* | 12.0* | 12.0* | 9.7  | 10.2* | 8.0  | 9.6*  | 8.5 |
| 4.5                 |       |       |       |       | 18.7* | 18.7* | 12.9  | 13.4* | 9.4  | 10.9* | 7.5  | 9.7*  | 8.8 |
| 3.0                 |       |       |       |       | 16.7* | 16.7* | 12.4  | 14.4* | 9.2  | 11.4* | 7.4  | 9.8*  | 8.8 |
| 1.5                 |       |       |       |       | 18.5  | 19.5* | 12.2  | 14.6* | 9.0  | 11.6* | 7.7  | 10.0* | 8.6 |
| 0                   |       |       |       |       | 16.4* | 16.4* | 18.2* | 18.2* | 12.1 | 14.0* | 8.4  | 10.1* | 8.0 |
| -1.5                | 16.4* | 16.4* | 15.8* | 15.8* | 12.3  | 12.3* |       |       |      |       | 10.0 | 10.1* | 7.1 |
| -3.0                | 19.6* | 19.6* | 11.4* | 11.4* |       |       |       |       |      |       | 9.2* | 9.2*  | 5.7 |
| -4.5                |       |       |       |       |       |       |       |       |      |       |      |       |     |
| -6.0                |       |       |       |       |       |       |       |       |      |       |      |       |     |

## Stick 2.90 m

| Under-carriage<br>m | 3.0m  |       | 4.5m  |       | 6.0m |       | 7.5m  |       | 9.0m  |       | m   |       |      |      |      |      |     |
|---------------------|-------|-------|-------|-------|------|-------|-------|-------|-------|-------|-----|-------|------|------|------|------|-----|
|                     |       |       |       |       |      |       |       |       |       |       |     |       |      |      |      |      |     |
| 9.0                 |       |       |       |       |      |       |       |       |       |       |     |       |      |      |      |      |     |
| 7.5                 |       |       |       |       |      |       |       |       |       |       |     |       |      |      |      |      |     |
| 6.0                 |       |       |       |       |      |       | 10.2* | 10.2* | 9.3*  | 9.3*  |     | 9.3*  | 9.3* | 7.2  |      |      |     |
| 4.5                 |       |       |       |       |      |       | 14.6* | 14.6* | 11.5* | 11.5* | 9.2 | 9.9*  | 8.2  | 9.1* | 8.2  |      |     |
| 3.0                 |       |       |       |       |      |       | 17.8* | 17.8* | 12.2  | 13.0* | 8.9 | 10.6* | 7.3  | 9.2* | 8.7  |      |     |
| 1.5                 |       |       |       |       |      |       | 17.6  | 19.6* | 11.7  | 14.1* | 8.6 | 11.2* | 6.8  | 9.3* | 6.8  | 9.3* | 9.0 |
| 0                   |       |       |       |       |      |       | 17.3  | 19.7* | 11.4  | 14.6* | 8.4 | 11.5* | 6.7  | 9.5* | 6.7  | 9.4* | 9.0 |
| -1.5                | 15.4* | 15.4* | 17.3  | 18.7* | 11.3 | 14.2* | 8.4   | 11.2* |       |       |     |       | 6.8  | 9.7* | 6.8  | 9.7* | 8.8 |
| -3.0                | 21.5* | 21.5* | 16.6* | 16.6* | 11.4 | 12.9* |       |       |       |       |     |       | 7.4  | 9.8* | 7.4  | 9.8* | 8.3 |
| -4.5                | 16.2* | 16.2* | 13.0* | 13.0* | 9.6* | 9.6*  |       |       |       |       |     |       | 8.6  | 9.9* | 8.6  | 9.9* | 7.5 |
| -6.0                |       |       |       |       |      |       |       |       |       |       |     |       | 9.5* | 9.5* | 9.5* | 9.5* | 6.1 |
| 9.0                 |       |       |       |       |      |       |       |       |       |       |     |       |      |      |      |      |     |
| 7.5                 |       |       |       |       |      |       |       |       |       |       |     |       |      |      | 9.2* | 9.2* | 7.2 |
| 6.0                 |       |       |       |       |      |       | 10.3* | 10.3* | 9.4*  | 9.4*  |     |       | 8.6  | 9.1* | 8.6  | 9.1* | 8.2 |
| 4.5                 |       |       |       |       |      |       | 14.9* | 14.9* | 11.6* | 11.6* | 9.7 | 9.9*  | 7.7  | 9.2* | 7.7  | 9.2* | 8.7 |
| 3.0                 |       |       |       |       |      |       | 18.1* | 18.1* | 12.9  | 13.1* | 9.4 | 10.7* | 7.3  | 9.3* | 7.2  | 9.3* | 9.0 |
| 1.5                 |       |       |       |       |      |       | 18.7  | 19.7* | 12.4  | 14.2* | 9.1 | 11.3* | 7.1  | 9.5* | 7.1  | 9.5* | 9.0 |
| 0                   |       |       |       |       |      |       | 18.4  | 19.7* | 12.1  | 14.6* | 9.0 | 11.5* | 7.3  | 9.7* | 7.3  | 9.7* | 8.8 |
| -1.5                | 16.1* | 16.1* | 18.4  | 18.6* | 12.0 | 14.2* | 8.9   | 11.1* |       |       |     |       | 7.9  | 9.9* | 7.9  | 9.9* | 8.3 |
| -3.0                | 21.1* | 21.1* | 16.4* | 16.4* | 12.2 | 12.7* |       |       |       |       |     |       | 9.4  | 9.9* | 9.4  | 9.9* | 7.5 |
| -4.5                |       |       |       |       |      |       |       |       |       |       |     |       | 9.4* | 9.4* | 9.4* | 9.4* | 6.1 |
| -6.0                |       |       |       |       |      |       |       |       |       |       |     |       |      |      |      |      |     |

## Stick 3.25 m

| Under-carriage<br>m | 3.0m  |       | 4.5m  |       | 6.0m  |       | 7.5m |       | 9.0m |      | m    |      |     |
|---------------------|-------|-------|-------|-------|-------|-------|------|-------|------|------|------|------|-----|
|                     |       |       |       |       |       |       |      |       |      |      |      |      |     |
| 9.0                 |       |       |       |       |       |       |      |       |      |      |      |      |     |
| 7.5                 |       |       |       |       |       |       | 8.8* | 8.8*  |      |      | 8.1* | 8.1* | 7.6 |
| 6.0                 |       |       |       |       |       |       | 8.9* | 8.9*  |      |      | 7.7  | 8.0* | 8.5 |
| 4.5                 | 20.8* | 20.8* | 13.7* | 13.7* | 10.9* | 10.9* | 9.2  | 9.5*  | 7.0  | 8.7* | 6.9  | 8.1* | 9.1 |
| 3.0                 |       |       | 17.0* | 17.0* | 12.3  | 12.5* | 8.9  | 10.3* | 6.8  | 9.0* | 6.4  | 8.5* | 9.3 |
| 1.5                 |       |       | 17.7  | 19.2* | 11.7  | 13.8* | 8.6  | 11.0* | 6.7  | 9.3* | 6.3  | 9.0* | 9.4 |
| 0                   | 7.5*  | 7.5*  | 17.2  | 19.7* | 11.3  | 14.4* | 8.4  | 11.4* | 6.5  | 9.4* | 6.4  | 9.2* | 9.1 |
| -1.5                | 14.8* | 14.8* | 17.2  | 18.9* | 11.2  | 14.3* | 8.3  | 11.2* |      |      | 6.9  | 9.4* | 8.6 |
| -3.0                | 22.9* | 22.9* | 17.2* | 17.2* | 11.3  | 13.2* | 8.3  | 10.1* |      |      | 7.9  | 9.6* | 7.8 |
| -4.5                | 18.0* | 18.0* | 13.9* | 13.9* | 10.6* | 10.6* |      |       |      |      | 9.4* | 9.4* | 6.6 |
| -6.0                |       |       |       |       |       |       |      |       |      |      |      |      |     |
| 9.0                 |       |       |       |       |       |       |      |       |      |      | 8.6* | 8.6* |     |
| 7.5                 |       |       |       |       |       |       | 8.7* | 8.7*  |      |      | 8.1* | 8.1* | 7.6 |
| 6.0                 |       |       |       |       |       |       | 8.9* | 8.9*  |      |      | 8.0* | 8.0* | 8.5 |
| 4.5                 | 21.7* | 21.7* | 14.0* | 14.0* | 11.1* | 11.1* | 9.6* | 9.6*  | 7.4  | 8.7* | 7.3  | 8.1* | 9.1 |
| 3.0                 |       |       | 17.2* | 17.2* | 12.6* | 12.6* | 9.4  | 10.3* | 7.2  | 9.0* | 6.8  | 8.6* | 9.3 |
| 1.5                 |       |       | 18.7  | 19.3* | 12.4  | 13.8* | 9.1  | 11.0* | 7.1  | 9.3* | 6.7  | 9.0* | 9.4 |
| 0                   | 8.2*  | 8.2*  | 18.3  | 19.6* | 12.1  | 14.4* | 8.9  | 11.4* | 7.0  | 9.3* | 6.9  | 9.2* | 9.1 |
| -1.5                | 15.5* | 15.5* | 18.3  | 18.8* | 11.9  | 14.2* | 8.8  | 11.2* |      |      | 7.4  | 9.4* | 8.6 |
| -3.0                | 22.6* | 22.6* | 17.0* | 17.0* | 12.0  | 13.0* | 8.9  | 10.0* |      |      | 8.6  | 9.6* | 7.8 |
| -4.5                | 17.5* | 17.5* | 13.6* | 13.6* | 10.2* | 10.2* |      |       |      |      | 9.3* | 9.3* | 6.6 |
| -6.0                |       |       |       |       |       |       |      |       |      |      |      |      |     |

## Stick 3.95 m

| Under-carriage<br>m | 3.0m  |       | 4.5m  |       | 6.0m  |       | 7.5m |       | 9.0m |      | m    |      |      |      |     |
|---------------------|-------|-------|-------|-------|-------|-------|------|-------|------|------|------|------|------|------|-----|
|                     |       |       |       |       |       |       |      |       |      |      |      |      |      |      |     |
| 9.0                 |       |       |       |       |       |       |      |       |      |      | 6.7* | 6.7* |      |      |     |
| 7.5                 |       |       |       |       |       |       | 7.7* | 7.7*  |      |      |      |      | 6.4* | 6.4* | 8.3 |
| 6.0                 |       |       |       |       |       |       | 8.0* | 8.0*  | 6.8* | 6.8* |      |      | 6.3* | 6.3* | 9.1 |
| 4.5                 |       |       |       |       |       |       | 9.8* | 9.8*  | 8.7* | 8.7* | 7.0  | 8.0* | 6.3  | 6.5* | 9.6 |
| 3.0                 | 13.0* | 13.0* | 15.3* | 15.3* | 11.5* | 11.5* | 8.9  | 9.6*  | 6.8  | 8.5* | 5.9  | 6.8* | 9.9  |      |     |
| 1.5                 | 7.1*  | 7.1*  | 17.9  | 18.0* | 11.7  | 13.0* | 8.6  | 10.4* | 6.6  | 8.9* | 5.7  | 7.3* | 9.9  |      |     |
| 0                   | 10.0* | 10.0* | 17.2  | 19.3* | 11.3  | 14.0* | 8.3  | 11.0* | 6.4  | 9.1* | 5.8  | 8.3* | 9.7  |      |     |
| -1.5                | 14.7* | 14.7* | 16.9  | 19.2* | 11.0  | 14.2* | 8.1  | 11.1* | 6.3  | 9.0* | 6.2  | 8.8* | 9.2  |      |     |
| -3.0                | 20.6* | 20.6* | 17.0  | 18.0* | 11.0  | 13.6* | 8.1  | 10.6* |      |      | 7.0  | 9.1* | 8.4  |      |     |
| -4.5                | 21.2* | 21.2* | 15.6* | 15.6* | 11.2  | 11.8* |      |       |      |      | 8.6  | 9.3* | 7.3  |      |     |
| -6.0                |       |       | 11.0* | 11.0* |       |       |      |       |      |      | 8.9* | 8.9* | 5.5  |      |     |
| 9.0                 |       |       |       |       |       |       |      |       |      |      |      |      | 6.7* | 6.7* |     |
| 7.5                 |       |       |       |       |       |       | 7.7* | 7.7*  |      |      |      |      | 6.4* | 6.4* | 8.3 |
| 6.0                 |       |       |       |       |       |       | 8.1* | 8.1*  | 7.0* | 7.0* |      |      | 6.3* | 6.3* | 9.1 |
| 4.5                 |       |       |       |       |       |       | 8.8* | 8.8*  | 7.4  | 8.1* | 6.5* | 6.5* | 9.6  |      |     |
| 3.0                 | 11.4* | 11.4* | 15.6* | 15.6* | 11.6* | 11.6* | 9.4  | 9.7*  | 7.2  | 8.5* | 6.3  | 6.8* | 9.9  |      |     |
| 1.5                 | 7.2*  | 7.2*  | 18.2* | 18.2* | 12.4  | 13.1* | 9.1  | 10.5* | 7.0  | 8.9* | 6.1  | 7.4* | 9.9  |      |     |
| 0                   | 10.4* | 10.4* | 18.2  | 19.3* | 12.0  | 14.0* | 8.8  | 11.0* | 6.8  | 9.2* | 6.2  | 8.4* | 9.7  |      |     |
| -1.5                | 15.1* | 15.1* | 18.0  | 19.2* | 11.8  | 14.2* | 8.6  | 11.1* | 6.8  | 9.0* | 6.7  | 8.8* | 9.2  |      |     |
| -3.0                | 21.2* | 21.2* | 17.9* | 17.9* | 11.7  | 13.5* | 8.6  | 10.5* |      |      | 7.5  | 9.1* | 8.4  |      |     |
| -4.5                | 20.7* | 20.7* | 15.3* | 15.3* | 11.6* | 11.6* |      |       |      |      | 9.3* | 9.3* | 7.3  |      |     |
| -6.0                |       |       | 10.4* | 10.4* |       |       |      |       |      |      | 8.8* | 8.8* | 5.5  |      |     |

Height Can be slewed through 360° In longitudinal position of undercarriage Max. reach \* Limited by hydr. capacity

The load values are quoted in tons (t) at stick end (without bucket), and may be swung 360° on firm and even ground. Adjacent values are valid for the undercarriage when in the longitudinal position. Capacities are valid for 600 mm wide track pads. Indicated loads are based on ISO 10567 standard and do not exceed 75% of tipping or 87% of hydraulic capacity (indicated via \*). Without bucket cylinder, link and lever the lift capacities will increase by 495 kg. Lifting capacity of the excavator is limited by machine stability and hydraulic capacity. According to European Standard, EN 474-5: In the European Union excavators have to be equipped with an overload warning device, a load diagram and automatic safety check valves on hoist cylinders and stick cylinder(s), when they are used for lifting operations which require the use of lifting accessories. Determine maximum load lift from load lift chart displayed in the operator's cab or from load lift chart detailed in the operator's manual supplied with the machine.

# Lift capacities

with mono boom SME 6.15 m, counterweight 8.4 t and track pads 600 mm

## Stick SME 2.15 m

| Under-carriage<br>m | 3.0m  |       | 4.5m  |       | 6.0m  |       | 7.5m |       | 9.0m  |       | m   |
|---------------------|-------|-------|-------|-------|-------|-------|------|-------|-------|-------|-----|
|                     |       |       |       |       |       |       |      |       |       |       |     |
| 7.5                 |       |       |       |       | 11.2* | 11.2* |      |       | 11.2* | 11.2* | 6.0 |
| 6.0                 |       |       |       |       | 11.4* | 11.4* |      |       | 9.4   | 10.7* | 7.1 |
| 4.5                 |       |       | 16.1* | 16.1* | 11.9  | 12.5* | 8.5  | 10.8* | 8.1   | 10.6* | 7.7 |
| 3.0                 |       |       | 17.1  | 19.0* | 11.3  | 13.7* | 8.3  | 11.3* | 7.5   | 10.7* | 8.0 |
| 1.5                 |       |       | 16.4  | 19.2* | 10.9  | 14.6* | 8.0  | 11.6* | 7.3   | 10.8* | 8.1 |
| 0                   |       |       | 16.3  | 19.3* | 10.7  | 14.6* | 7.9  | 11.5* | 7.6   | 10.9* | 7.8 |
| -1.5                | 19.7* | 19.7* | 16.4  | 17.6* | 10.7  | 13.7* |      |       | 8.4   | 11.0* | 7.2 |
| -3.0                | 17.4* | 17.4* | 14.6* | 14.6* | 11.0  | 11.1* |      |       | 10.6  | 10.6* | 6.2 |
| -4.5                |       |       |       |       |       |       |      |       |       |       |     |
| 7.5                 |       |       |       |       | 11.2* | 11.2* |      |       | 11.2* | 11.2* | 6.0 |
| 6.0                 |       |       | 13.6* | 13.6* | 11.5* | 11.5* |      |       | 9.9   | 10.7* | 7.1 |
| 4.5                 |       |       | 16.4* | 16.4* | 12.6* | 12.6* | 9.0  | 10.8* | 8.5   | 10.6* | 7.7 |
| 3.0                 |       |       | 18.1  | 19.2* | 12.0  | 13.8* | 8.8  | 11.3* | 7.9   | 10.7* | 8.0 |
| 1.5                 |       |       | 17.5  | 19.5* | 11.6  | 14.6* | 8.6  | 11.6* | 7.8   | 10.8* | 8.1 |
| 0                   |       |       | 17.4  | 19.2* | 11.4  | 14.6* | 8.5  | 11.4* | 8.1   | 10.9* | 7.8 |
| -1.5                | 20.4* | 20.4* | 17.4* | 17.4* | 11.4  | 13.5* |      |       | 9.1   | 11.0* | 7.2 |
| -3.0                | 17.0* | 17.0* | 14.2* | 14.2* | 10.7* | 10.7* |      |       | 10.5* | 10.5* | 6.2 |
| -4.5                |       |       |       |       |       |       |      |       |       |       |     |

## Stick SME 2.60 m

| Under-carriage<br>m | 3.0m  |       | 4.5m  |       | 6.0m  |       | 7.5m |       | 9.0m  |       | m   |
|---------------------|-------|-------|-------|-------|-------|-------|------|-------|-------|-------|-----|
|                     |       |       |       |       |       |       |      |       |       |       |     |
| 7.5                 |       |       |       |       | 10.3* | 10.3* |      |       | 10.3* | 10.3* | 6.5 |
| 6.0                 |       |       |       |       | 10.7* | 10.7* | 8.7  | 10.0* |       |       | 7.5 |
| 4.5                 |       |       | 15.0* | 15.0* | 11.9* | 11.9* | 8.5  | 10.3* |       |       | 8.2 |
| 3.0                 |       |       | 17.4  | 18.1* | 11.4  | 13.2* | 8.3  | 10.9* |       |       | 8.5 |
| 1.5                 |       |       | 16.5  | 19.7* | 10.9  | 14.3* | 8.0  | 11.4* |       |       | 8.5 |
| 0                   |       |       | 16.2  | 19.6* | 10.6  | 14.6* | 7.9  | 11.5* |       |       | 8.2 |
| -1.5                | 18.5* | 18.5* | 16.3  | 18.3* | 10.6  | 14.0* | 7.8  | 10.8* |       |       | 7.7 |
| -3.0                | 20.0* | 20.0* | 15.7* | 15.7* | 10.8  | 12.1* |      |       |       |       | 6.8 |
| -4.5                |       |       | 10.8* | 10.8* |       |       |      |       |       |       | 5.2 |
| 7.5                 |       |       |       |       | 10.3* | 10.3* |      |       |       |       | 6.5 |
| 6.0                 |       |       |       |       | 10.8* | 10.8* | 9.3  | 10.0* |       |       | 7.5 |
| 4.5                 |       |       | 15.3* | 15.3* | 12.0* | 12.0* | 9.1  | 10.3* |       |       | 8.2 |
| 3.0                 |       |       | 18.3* | 18.3* | 12.1  | 13.3* | 8.8  | 10.9* |       |       | 8.5 |
| 1.5                 |       |       | 17.6  | 19.8* | 11.6  | 14.3* | 8.5  | 11.4* |       |       | 8.5 |
| 0                   |       |       | 17.3  | 19.6* | 11.4  | 14.6* | 8.4  | 11.5* |       |       | 8.2 |
| -1.5                | 19.4* | 19.4* | 17.4  | 18.2* | 11.3  | 13.9* | 8.4  | 10.6* |       |       | 7.7 |
| -3.0                | 19.6* | 19.6* | 15.4* | 15.4* | 11.5  | 11.8* |      |       |       |       | 6.8 |
| -4.5                |       |       |       |       |       |       |      |       |       |       | 5.2 |

Height Can be slewed through 360° In longitudinal position of undercarriage Max. reach \* Limited by hydr. capacity

The load values are quoted in tons (t) at stick end (without bucket), and may be swung 360° on firm and even ground. Adjacent values are valid for the undercarriage when in the longitudinal position. Capacities are valid for 600 mm wide track pads. Indicated loads are based on ISO 10567 standard and do not exceed 75% of tipping or 87% of hydraulic capacity (indicated via \*). Without bucket cylinder, link and lever the lift capacities will increase by 590 kg. Lifting capacity of the excavator is limited by machine stability and hydraulic capacity.

According to European Standard, EN 474-5: In the European Union excavators have to be equipped with an overload warning device, a load diagram and automatic safety check valves on hoist cylinders and stick cylinder(s), when they are used for lifting operations which require the use of lifting accessories.

Determine maximum load lift from load lift chart displayed in the operator's cab or from load lift chart detailed in the operator's manual supplied with the machine.



# Lift capacities

with mono boom SME 6.15 m, counterweight 9.4 t and track pads 600 mm

## Stick SME 2.15 m

| Under-carriage<br>m | 3.0m  |       | 4.5m  |       | 6.0m  |       | 7.5m |       | 9.0m  |       | m   |
|---------------------|-------|-------|-------|-------|-------|-------|------|-------|-------|-------|-----|
|                     |       |       |       |       |       |       |      |       |       |       |     |
| 7.5                 |       |       |       |       | 11.2* | 11.2* |      |       | 11.2* | 11.2* | 6.0 |
| 6.0                 |       |       |       |       | 11.4* | 11.4* |      |       | 10.1  | 10.7* | 7.1 |
| 4.5                 |       |       | 16.1* | 16.1* | 12.5* | 12.5* | 9.1  | 10.8* | 8.6   | 10.6* | 7.7 |
| 3.0                 |       |       | 18.2  | 19.0* | 12.1  | 13.7* | 8.8  | 11.3* | 8.0   | 10.7* | 8.0 |
| 1.5                 |       |       | 17.6  | 19.2* | 11.7  | 14.6* | 8.6  | 11.6* | 7.8   | 10.8* | 8.1 |
| 0                   |       |       | 17.4  | 19.3* | 11.5  | 14.6* | 8.5  | 11.5* | 8.1   | 10.9* | 7.8 |
| -1.5                | 19.7* | 19.7* | 17.6  | 17.6* | 11.5  | 13.7* |      |       | 9.0   | 11.0* | 7.2 |
| -3.0                | 17.4* | 17.4* | 14.6* | 14.6* | 11.1* | 11.1* |      |       | 10.6* | 10.6* | 6.2 |
| -4.5                |       |       |       |       |       |       |      |       |       |       |     |
| 7.5                 |       |       |       |       | 11.2* | 11.2* |      |       | 11.2* | 11.2* | 6.0 |
| 6.0                 |       |       | 13.6* | 13.6* | 11.5* | 11.5* |      |       | 10.5  | 10.7* | 7.1 |
| 4.5                 |       |       | 16.4* | 16.4* | 12.6* | 12.6* | 9.6  | 10.8* | 9.1   | 10.6* | 7.7 |
| 3.0                 |       |       | 19.2* | 19.2* | 12.8  | 13.8* | 9.4  | 11.3* | 8.4   | 10.7* | 8.0 |
| 1.5                 |       |       | 18.6  | 19.5* | 12.4  | 14.6* | 9.2  | 11.6* | 8.3   | 10.8* | 8.1 |
| 0                   |       |       | 18.6  | 19.2* | 12.2  | 14.6* | 9.1  | 11.4* | 8.7   | 10.9* | 7.8 |
| -1.5                | 20.4* | 20.4* | 17.4* | 17.4* | 12.2  | 13.5* |      |       | 9.7   | 11.0* | 7.2 |
| -3.0                | 17.0* | 17.0* | 14.2* | 14.2* | 10.7* | 10.7* |      |       | 10.5* | 10.5* | 6.2 |
| -4.5                |       |       |       |       |       |       |      |       |       |       |     |

## Stick SME 2.60 m

| Under-carriage<br>m | 3.0m  |       | 4.5m  |       | 6.0m  |       | 7.5m |       | 9.0m  |       | m   |
|---------------------|-------|-------|-------|-------|-------|-------|------|-------|-------|-------|-----|
|                     |       |       |       |       |       |       |      |       |       |       |     |
| 7.5                 |       |       |       |       | 10.3* | 10.3* |      |       | 10.3* | 10.3* | 6.5 |
| 6.0                 |       |       |       |       | 10.7* | 10.7* | 9.3  | 10.0* |       |       | 7.5 |
| 4.5                 |       |       | 15.0* | 15.0* | 11.9* | 11.9* | 9.1  | 10.3* | 8.0   | 9.9*  | 8.2 |
| 3.0                 |       |       | 18.1* | 18.1* | 12.2  | 13.2* | 8.8  | 10.9* | 7.4   | 10.0* | 8.5 |
| 1.5                 |       |       | 17.7  | 19.7* | 11.7  | 14.3* | 8.6  | 11.4* | 7.2   | 10.1* | 8.5 |
| 0                   |       |       | 17.4  | 19.6* | 11.4  | 14.6* | 8.4  | 11.5* | 7.5   | 10.3* | 8.2 |
| -1.5                | 18.5* | 18.5* | 17.4  | 18.3* | 11.4  | 14.0* | 8.4  | 10.8* | 8.2   | 10.4* | 7.7 |
| -3.0                | 20.0* | 20.0* | 15.7* | 15.7* | 11.5  | 12.1* |      |       | 9.9   | 10.3* | 6.8 |
| -4.5                |       |       | 10.8* | 10.8* |       |       |      |       | 9.2*  | 9.2*  | 5.2 |
| 7.5                 |       |       |       |       | 10.3* | 10.3* |      |       | 10.2* | 10.2* | 6.5 |
| 6.0                 |       |       |       |       | 10.8* | 10.8* | 9.8  | 10.0* | 9.6   | 9.9*  | 7.5 |
| 4.5                 |       |       | 15.3* | 15.3* | 12.0* | 12.0* | 9.6  | 10.3* | 8.4   | 9.9*  | 8.2 |
| 3.0                 |       |       | 18.3* | 18.3* | 12.9  | 13.3* | 9.4  | 10.9* | 7.8   | 10.0* | 8.5 |
| 1.5                 |       |       | 18.7  | 19.8* | 12.4  | 14.3* | 9.1  | 11.4* | 7.7   | 10.1* | 8.5 |
| 0                   |       |       | 18.5  | 19.6* | 12.1  | 14.6* | 9.0  | 11.5* | 8.0   | 10.3* | 8.2 |
| -1.5                | 19.4* | 19.4* | 18.2* | 18.2* | 12.1  | 13.9* | 9.0  | 10.6* | 8.8   | 10.4* | 7.7 |
| -3.0                | 19.6* | 19.6* | 15.4* | 15.4* | 11.8* | 11.8* |      |       | 10.3* | 10.3* | 6.8 |
| -4.5                |       |       |       |       |       |       |      |       |       |       | 5.2 |

Height Can be slewed through 360° In longitudinal position of undercarriage Max. reach \* Limited by hydr. capacity

The load values are quoted in tons (t) at stick end (without bucket), and may be swung 360° on firm and even ground. Adjacent values are valid for the undercarriage when in the longitudinal position. Capacities are valid for 600 mm wide track pads. Indicated loads are based on ISO 10567 standard and do not exceed 75% of tipping or 87% of hydraulic capacity (indicated via \*). Without bucket cylinder, link and lever the lift capacities will increase by 590 kg. Lifting capacity of the excavator is limited by machine stability and hydraulic capacity.

According to European Standard, EN 474-5: In the European Union excavators have to be equipped with an overload warning device, a load diagram and automatic safety check valves on hoist cylinders and stick cylinder(s), when they are used for lifting operations which require the use of lifting accessories.

Determine maximum load lift from load lift chart displayed in the operator's cab or from load lift chart detailed in the operator's manual supplied with the machine.

# Lift capacities

with mono boom SME 6.45 m, counterweight 8.4 t and track pads 600 mm

## Stick SME 2.15 m

| Under-carriage<br>m | 3.0m  |       | 4.5m  |       | 6.0m  |       | 7.5m |       | 9.0m |  | m     |       |     |
|---------------------|-------|-------|-------|-------|-------|-------|------|-------|------|--|-------|-------|-----|
|                     |       |       |       |       |       |       |      |       |      |  |       |       |     |
| 7.5                 |       |       |       |       | 10.6* | 10.6* |      |       |      |  | 10.5* | 10.5* | 6.6 |
| 6.0                 |       |       |       |       | 11.1* | 11.1* |      |       |      |  | 8.8   | 10.1* | 7.5 |
| 4.5                 |       |       | 16.2* | 16.2* | 11.8  | 12.2* | 8.5  | 10.4* |      |  | 7.6   | 10.0* | 8.1 |
| 3.0                 |       |       |       |       | 11.2  | 13.5* | 8.2  | 11.0* |      |  | 7.0   | 10.1* | 8.4 |
| 1.5                 |       |       |       |       | 10.8  | 14.3* | 8.0  | 11.4* |      |  | 6.9   | 10.2* | 8.4 |
| 0                   |       |       | 16.2  | 18.7* | 10.6  | 14.4* | 7.8  | 11.4* |      |  | 7.1   | 10.3* | 8.1 |
| -1.5                | 15.3* | 15.3* | 16.3  | 17.2* | 10.6  | 13.6* | 7.9  | 10.5* |      |  | 7.8   | 10.4* | 7.5 |
| -3.0                | 17.0* | 17.0* | 14.7* | 14.7* | 10.8  | 11.5* |      |       |      |  | 9.6   | 10.2* | 6.5 |
| -4.5                |       |       |       |       |       |       |      |       |      |  |       |       |     |
| 7.5                 |       |       |       |       | 10.6* | 10.6* |      |       |      |  | 10.5* | 10.5* | 6.6 |
| 6.0                 |       |       | 13.5* | 13.5* | 11.2* | 11.2* | 9.2  | 10.1* |      |  | 9.1   | 10.1* | 7.5 |
| 4.5                 |       |       | 16.5* | 16.5* | 12.4* | 12.4* | 9.0  | 10.5* |      |  | 8.0   | 10.0* | 8.1 |
| 3.0                 |       |       |       |       | 11.8  | 13.6* | 8.7  | 11.0* |      |  | 7.4   | 10.1* | 8.4 |
| 1.5                 |       |       |       |       | 11.4  | 14.4* | 8.4  | 11.4* |      |  | 7.3   | 10.2* | 8.4 |
| 0                   |       |       | 17.1  | 18.6* | 11.2  | 14.3* | 8.3  | 11.3* |      |  | 7.6   | 10.4* | 8.1 |
| -1.5                | 16.8* | 16.8* | 17.1* | 17.1* | 11.2  | 13.5* |      |       |      |  | 8.4   | 10.4* | 7.5 |
| -3.0                | 16.7* | 16.7* | 14.4* | 14.4* | 11.3* | 11.3* |      |       |      |  | 10.1* | 10.1* | 6.5 |
| -4.5                |       |       |       |       |       |       |      |       |      |  |       |       |     |

## Stick SME 2.60 m

| Under-carriage<br>m | 3.0m  |       | 4.5m  |       | 6.0m  |       | 7.5m |       | 9.0m |  | m    |      |     |
|---------------------|-------|-------|-------|-------|-------|-------|------|-------|------|--|------|------|-----|
|                     |       |       |       |       |       |       |      |       |      |  |      |      |     |
| 7.5                 |       |       |       |       | 9.8*  | 9.8*  |      |       |      |  | 9.6* | 9.6* | 7.1 |
| 6.0                 |       |       |       |       | 10.4* | 10.4* | 8.8  | 9.5*  |      |  | 8.0  | 9.4* | 8.0 |
| 4.5                 |       |       | 15.1* | 15.1* | 11.7* | 11.7* | 8.5  | 10.0* |      |  | 7.0  | 9.4* | 8.5 |
| 3.0                 |       |       | 17.1  | 18.2* | 11.3  | 13.0* | 8.2  | 10.6* |      |  | 6.5  | 9.4* | 8.8 |
| 1.5                 |       |       | 16.3  | 16.5* | 10.8  | 14.1* | 7.9  | 11.2* |      |  | 6.4  | 9.6* | 8.8 |
| 0                   |       |       | 16.1  | 19.2* | 10.5  | 14.4* | 7.8  | 11.3* |      |  | 6.5  | 9.8* | 8.5 |
| -1.5                | 15.3* | 15.3* | 16.1  | 18.0* | 10.5  | 13.8* | 7.7  | 10.8* |      |  | 7.1  | 9.9* | 7.9 |
| -3.0                | 19.5* | 19.5* | 15.7* | 15.7* | 10.6  | 12.2* |      |       |      |  | 8.5  | 9.8* | 7.0 |
| -4.5                |       |       | 11.6* | 11.6* |       |       |      |       |      |  | 9.1* | 9.1* | 5.5 |
| 7.5                 |       |       |       |       | 9.9*  | 9.9*  |      |       |      |  | 9.6* | 9.6* | 7.1 |
| 6.0                 |       |       |       |       | 10.5* | 10.5* | 9.2  | 9.5*  |      |  | 8.3  | 9.4* | 8.0 |
| 4.5                 |       |       | 15.4* | 15.4* | 11.8* | 11.8* | 9.0  | 10.0* |      |  | 7.4  | 9.4* | 8.5 |
| 3.0                 |       |       | 17.9  | 18.4* | 11.9  | 13.2* | 8.7  | 10.7* |      |  | 6.9  | 9.4* | 8.8 |
| 1.5                 |       |       | 16.6* | 16.6* | 11.4  | 14.1* | 8.4  | 11.2* |      |  | 6.8  | 9.6* | 8.8 |
| 0                   |       |       | 17.0  | 19.1* | 11.2  | 14.3* | 8.2  | 11.3* |      |  | 7.0  | 9.8* | 8.5 |
| -1.5                | 16.3* | 16.3* | 17.1  | 17.8* | 11.1  | 13.7* | 8.2  | 10.7* |      |  | 7.7  | 9.9* | 7.9 |
| -3.0                | 19.2* | 19.2* | 15.4* | 15.4* | 11.3  | 12.0* |      |       |      |  | 9.2  | 9.8* | 7.0 |
| -4.5                |       |       | 11.1* | 11.1* |       |       |      |       |      |  | 9.0* | 9.0* | 5.5 |

Height Can be slewed through 360° In longitudinal position of undercarriage Max. reach \* Limited by hydr. capacity

The load values are quoted in tons (t) at stick end (without bucket), and may be swung 360° on firm and even ground. Adjacent values are valid for the undercarriage when in the longitudinal position. Capacities are valid for 600 mm wide track pads. Indicated loads are based on ISO 10567 standard and do not exceed 75% of tipping or 87% of hydraulic capacity (indicated via \*). Without bucket cylinder, link and lever the lift capacities will increase by 590 kg. Lifting capacity of the excavator is limited by machine stability and hydraulic capacity.

According to European Standard, EN 474-5: In the European Union excavators have to be equipped with an overload warning device, a load diagram and automatic safety check valves on hoist cylinders and stick cylinder(s), when they are used for lifting operations which require the use of lifting accessories.

Determine maximum load lift from load lift chart displayed in the operator's cab or from load lift chart detailed in the operator's manual supplied with the machine.

# Lift capacities

with mono boom SME 6.45 m, counterweight 9.4 t and track pads 600 mm

## Stick SME 2.15 m

| Under-carriage<br>m | 3.0m  |       | 4.5m  |       | 6.0m  |       | 7.5m |       | 9.0m |  | m     |       |     |
|---------------------|-------|-------|-------|-------|-------|-------|------|-------|------|--|-------|-------|-----|
|                     |       |       |       |       |       |       |      |       |      |  |       |       |     |
| 7.5                 |       |       |       |       | 10.6* | 10.6* |      |       |      |  | 10.5* | 10.5* | 6.6 |
| 6.0                 |       |       |       |       | 11.1* | 11.1* |      |       |      |  | 9.3   | 10.1* | 7.5 |
| 4.5                 |       |       | 16.2* | 16.2* | 12.2* | 12.2* | 9.1  | 10.4* |      |  | 8.1   | 10.0* | 8.1 |
| 3.0                 |       |       |       |       | 12.0  | 13.5* | 8.8  | 11.0* |      |  | 7.5   | 10.1* | 8.4 |
| 1.5                 |       |       |       |       | 11.5  | 14.3* | 8.5  | 11.4* |      |  | 7.4   | 10.2* | 8.4 |
| 0                   |       |       | 17.3  | 18.7* | 11.3  | 14.4* | 8.4  | 11.4* |      |  | 7.6   | 10.3* | 8.1 |
| -1.5                | 15.3* | 15.3* | 17.2* | 17.2* | 11.4  | 13.6* | 8.5  | 10.5* |      |  | 8.4   | 10.4* | 7.5 |
| -3.0                | 17.0* | 17.0* | 14.7* | 14.7* | 11.5* | 11.5* |      |       |      |  | 10.2* | 10.2* | 6.5 |
| -4.5                |       |       |       |       |       |       |      |       |      |  |       |       |     |
| 7.5                 |       |       |       |       | 10.6* | 10.6* |      |       |      |  | 10.5* | 10.5* | 6.6 |
| 6.0                 |       |       | 13.5* | 13.5* | 11.2* | 11.2* | 9.7  | 10.1* |      |  | 9.7   | 10.1* | 7.5 |
| 4.5                 |       |       | 16.5* | 16.5* | 12.4* | 12.4* | 9.5  | 10.5* |      |  | 8.5   | 10.0* | 8.1 |
| 3.0                 |       |       |       |       | 12.6  | 13.6* | 9.2  | 11.0* |      |  | 7.9   | 10.1* | 8.4 |
| 1.5                 |       |       |       |       | 12.1  | 14.4* | 9.0  | 11.4* |      |  | 7.8   | 10.2* | 8.4 |
| 0                   |       |       | 18.3  | 18.6* | 12.0  | 14.3* | 8.9  | 11.3* |      |  | 8.1   | 10.4* | 8.1 |
| -1.5                | 16.8* | 16.8* | 17.1* | 17.1* | 12.0  | 13.5* |      |       |      |  | 9.0   | 10.4* | 7.5 |
| -3.0                | 16.7* | 16.7* | 14.4* | 14.4* | 11.3* | 11.3* |      |       |      |  | 10.1* | 10.1* | 6.5 |
| -4.5                |       |       |       |       |       |       |      |       |      |  |       |       |     |

## Stick SME 2.60 m

| Under-carriage<br>m | 3.0m  |       | 4.5m  |       | 6.0m  |       | 7.5m |       | 9.0m |  | m    |      |     |
|---------------------|-------|-------|-------|-------|-------|-------|------|-------|------|--|------|------|-----|
|                     |       |       |       |       |       |       |      |       |      |  |      |      |     |
| 7.5                 |       |       |       |       | 9.8*  | 9.8*  |      |       |      |  | 9.6* | 9.6* | 7.1 |
| 6.0                 |       |       |       |       | 10.4* | 10.4* | 9.4  | 9.5*  |      |  | 8.5  | 9.4* | 8.0 |
| 4.5                 |       |       | 15.1* | 15.1* | 11.7* | 11.7* | 9.1  | 10.0* |      |  | 7.5  | 9.4* | 8.5 |
| 3.0                 |       |       | 18.2* | 18.2* | 12.1  | 13.0* | 8.8  | 10.6* |      |  | 7.0  | 9.4* | 8.8 |
| 1.5                 |       |       | 16.5* | 16.5* | 11.6  | 14.1* | 8.5  | 11.2* |      |  | 6.8  | 9.6* | 8.8 |
| 0                   |       |       | 17.2  | 19.2* | 11.3  | 14.4* | 8.3  | 11.3* |      |  | 7.0  | 9.8* | 8.5 |
| -1.5                | 15.3* | 15.3* | 17.3  | 18.0* | 11.2  | 13.8* | 8.3  | 10.8* |      |  | 7.7  | 9.9* | 7.9 |
| -3.0                | 19.5* | 19.5* | 15.7* | 15.7* | 11.4  | 12.2* |      |       |      |  | 9.1  | 9.8* | 7.0 |
| -4.5                |       |       | 11.6* | 11.6* |       |       |      |       |      |  | 9.1* | 9.1* | 5.5 |
| 7.5                 |       |       |       |       | 9.9*  | 9.9*  |      |       |      |  | 9.6* | 9.6* | 7.1 |
| 6.0                 |       |       | 10.5* | 10.5* | 9.5*  | 9.5*  |      |       |      |  | 8.9  | 9.4* | 8.0 |
| 4.5                 |       |       | 15.4* | 15.4* | 11.8* | 11.8* | 9.6  | 10.0* |      |  | 7.8  | 9.4* | 8.5 |
| 3.0                 |       |       | 18.4* | 18.4* | 12.6  | 13.2* | 9.2  | 10.7* |      |  | 7.4  | 9.4* | 8.8 |
| 1.5                 |       |       | 16.6* | 16.6* | 12.2  | 14.1* | 9.0  | 11.2* |      |  | 7.2  | 9.6* | 8.8 |
| 0                   |       |       | 18.2  | 19.1* | 11.9  | 14.3* | 8.8  | 11.3* |      |  | 7.5  | 9.8* | 8.5 |
| -1.5                | 16.3* | 16.3* | 17.8* | 17.8* | 11.9  | 13.7* | 8.8  | 10.7* |      |  | 8.2  | 9.9* | 7.9 |
| -3.0                | 19.2* | 19.2* | 15.4* | 15.4* | 12.0* | 12.0* |      |       |      |  | 9.8  | 9.8* | 7.0 |
| -4.5                |       |       | 11.1* | 11.1* |       |       |      |       |      |  | 9.0* | 9.0* | 5.5 |

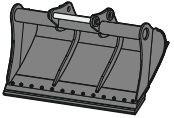
Height Can be slewed through 360° In longitudinal position of undercarriage Max. reach \* Limited by hydr. capacity

The load values are quoted in tons (t) at stick end (without bucket), and may be swung 360° on firm and even ground. Adjacent values are valid for the undercarriage when in the longitudinal position. Capacities are valid for 600 mm wide track pads. Indicated loads are based on ISO 10567 standard and do not exceed 75% of tipping or 87% of hydraulic capacity (indicated via \*). Without bucket cylinder, link and lever the lift capacities will increase by 590 kg. Lifting capacity of the excavator is limited by machine stability and hydraulic capacity.

According to European Standard, EN 474-5: In the European Union excavators have to be equipped with an overload warning device, a load diagram and automatic safety check valves on hoist cylinders and stick cylinder(s), when they are used for lifting operations which require the use of lifting accessories.

Determine maximum load lift from load lift chart displayed in the operator's cab or from load lift chart detailed in the operator's manual supplied with the machine.

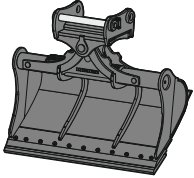
# Attachments



## Rigid ditch cleaning bucket

### GRL 05, for mounting to quick coupler SWA 66

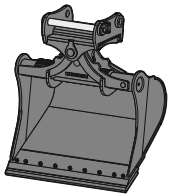
|               |                |       |       |       |       |       |
|---------------|----------------|-------|-------|-------|-------|-------|
| Cutting width | mm             | 2,000 | 2,200 | 2,400 | 2,800 | 2,800 |
| Capacity      | m <sup>3</sup> | 1.45  | 1.65  | 1.50  | 2.60  | 2.90  |
| Weight        | kg             | 994   | 1,048 | 930   | 1,522 | 1,561 |



## Tiltable ditch cleaning bucket

### GRL 100, 2 x 50° tiltable, for mounting to quick coupler SWA 66

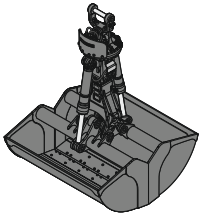
|               |                |       |       |       |       |       |       |
|---------------|----------------|-------|-------|-------|-------|-------|-------|
| Cutting width | mm             | 2,000 | 2,000 | 2,000 | 2,200 | 2,400 | 2,400 |
| Capacity      | m <sup>3</sup> | 0.70  | 1.20  | 1.45  | 1.65  | 0.85  | 1.45  |
| Weight        | kg             | 1,375 | 1,520 | 1,595 | 1,660 | 1,475 | 1,610 |



## Tilt bucket

### SL 100, 2 x 50° tiltable, for mounting to quick coupler SWA 66

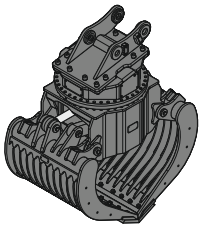
|               |                |       |       |       |       |       |       |       |
|---------------|----------------|-------|-------|-------|-------|-------|-------|-------|
| Cutting width | mm             | 1,600 | 1,600 | 1,700 | 1,800 | 1,800 | 1,800 | 1,800 |
| Capacity      | m <sup>3</sup> | 1.45  | 1.75  | 1.85  | 1.60  | 2.00  | 1.60  | 2.00  |
| Weight        | kg             | 1,520 | 1,635 | 1,695 | 1,620 | 1,690 | 1,749 | 1,757 |
| HD version    |                |       |       |       |       | X     |       | X     |



## Clamshell grab

### GMZ 80, clamshell buckets, for mounting to quick coupler SWA 66

|               |                |       |       |       |       |
|---------------|----------------|-------|-------|-------|-------|
| Cutting width | mm             | 1,200 | 1,400 | 1,650 | 2,000 |
| Capacity      | m <sup>3</sup> | 1.40  | 1.70  | 2.00  | 2.50  |
| Weight        | kg             | 1,452 | 1,558 | 1,693 | 1,877 |



## Sorting grab

ribbed

perforated

### SG 40, for mounting to quick coupler SWA 66

|               |                |       |       |       |       |
|---------------|----------------|-------|-------|-------|-------|
| Cutting width | mm             | 1,100 | 1,300 | 1,100 | 1,300 |
| Capacity      | m <sup>3</sup> | 1.10  | 1.40  | 1.30  | 1.60  |
| Weight        | kg             | 2,320 | 2,895 | 2,230 | 2,800 |

# Serial equipment

## Undercarriage

- Lashing eyes
- Sprocket with dirt ejector
- Track and carrier rollers, sealed and lifetime-lubricated

## Uppercarriage

- Access platforms without protruding parts
- Anti-skid surfaces
- Automatic swing brake lock
- DEF tank filling indicator
- DEF tank lockable access hatch
- Engine hood with gas spring opening
- Filters accessible from ground level
- Handrails
- Hydraulic oil level, visible from ground level
- Lockable service doors
- Lockable storage and accessories compartment
- Main switch, accessible from ground level
- Main switch, electric, with timer
- Main switch, manual, lockable
- Positioning swing brake manual
- Protection grid on radiator fan
- Sound insulation
- Swing-out radiators
- Windshield washer fluid tank, accessible from ground level

## Hydraulic system

- Dedicated swing circuit
- Filter with integrated fine filters
- Hydraulic pressure measuring ports
- Liebherr Positive Control system with 2 independent circuits
- Magnetic rod
- Pressure accumulator for controlled lowering of equipment with engine turned off

## Engine

- Air filter with automatic dust ejector
- Automatic engine idling / speed increase, controlled via joystick sensors
- Common-Rail injection system
- Engine oil dipstick
- Exhaust gas after-treatment system – SCR
- Fixed geometry turbocharger
- Fuel fine filter
- Fuel pre-filter and water separator
- Fuel priming pump
- Intercooler
- Power Pack US EPA Tier 4 Final

## Cab

- 2" seat belt with retractor
- 9" multifunction colour touchscreen
- Air conditioning, automatic, tri-zone, controlled via display
- Armrests adjustable in length, height and inclination
- Bottle holder
- Cab air filters housing, accessible from ground level
- Cab door sliding windows
- Cigarette lighter
- Coat hook
- DEF consumption on touchscreen
- DEF level on touchscreen
- Electric socket in cabin (24 V)
- Emergency hammer
- Engine coolant level, visible from the cab
- Engine oil level on touchscreen
- Footrest
- Fuel consumption on touchscreen
- Fuel level on touchscreen
- Hydraulic oil level on touchscreen
- Interior lighting
- Laminated right hand side window
- Laminated roof window
- LiDAT Plus (Liebherr data transfer system)
- Mechanical hour meter, visible from ground level
- Mobile phone storage net
- Movement priority between swing and boom, adjustable via touchscreen
- Movement priority for stick-in, adjustable via touchscreen
- Operating modes
- Power modes
- Rain hood over front window opening
- Rearview mirror
- Rear window emergency exit
- Retractable laminated two-piece windscreen
- Roll-down sun blinds for windscreen and roof window
- Rubber floor mat, fixed on floor and removable
- Shortcut buttons on joystick configurable
- Stepless adjustable engine speed
- Storage nets
- Storage spaces
- Swing braking torque adjustable via touchscreen
- Swing drive gearbox oil level, visible from the cab
- Tilttable console left
- Tinted windows
- Visco-elastic damping
- Windscreen wiper and washer

## Equipment

- Anti-drift system boom cylinders
- Anti-drift system stick cylinder
- Boom cylinders regeneration
- Pivot points made of cast steel
- SAE split flanges on high pressure lines
- Stick cylinder regeneration

# Equipment standard / option

## Undercarriage

|  |   |
|--|---|
| Chain guide 3 pieces   | ● |
| Chain guide 4 pieces   | + |
| Chain guide full length  | + |
| Cover and base plate for undercarriage centre section            | ● |
| Reinforced cover and base plate for undercarriage centre section | + |
| Reinforced cover plate for centre section (LC-V undercarriage)   | + |
| Steps  | ● |
| Steps wide   | + |
| Track pads triple grouser reinforced 600 mm                      | ● |
| Track pads triple grouser reinforced 750 / 900 mm                | + |
| Tracks, sealed and greased, reinforced                           | ● |
| Travel drive gearbox protection                                  | + |
| Travel motor housing protection                                  | + |
| Undercarriage LC-V   | + |
| Undercarriage S-HD   | + |

## Uppercarriage

|   |                 |
|---|-----------------|
| Batteries high capacity   | +               |
| Batteries standard capacity   | ●               |
| Centralised lubrication system (automatic)                                  | +               |
| Centralised lubrication system (manual)                                     | ●               |
| Cold kit -30 °C   | +               |
| Cold kit -40 °C   | +               |
| Counterweight heavy 9.4 t   | +               |
| Counterweight standard 8.4 t  | ●               |
| External starting aid (24 V)  | +               |
| Front right rearview mirror   | ● <sup>1)</sup> |
| Fuel anti-theft protection  | +               |
| Headlight on uppercarriage, front right, LED, 1 piece, protection included  | ● <sup>1)</sup> |
| Headlight on uppercarriage, front right, LED+, 1 piece, protection included | + <sup>1)</sup> |
| Headlight on uppercarriage, lateral right, LED+, 1 piece                    | + <sup>1)</sup> |
| Headlight on uppercarriage, lateral left, LED+, 1 piece                     | + <sup>1)</sup> |
| Headlights on uppercarriage, rear, LED+, 2 pieces                           | + <sup>1)</sup> |
| Lockable fuel tank cap  | ●               |
| Lockable fuel tank cap with padlock   | +               |
| Lockable storage box  | +               |
| Rearview mirror on counterweight  | ●               |
| Safe uppercarriage side access platform                                     | +               |
| Tank refilling pump fuel  | +               |
| Tool set including storage case   | ●               |
| Uppercarriage bottom closure sheets   | ●               |

## Hydraulic system

|  |   |
|--|---|
| Filter for hydraulic hammer return flow  | + |
| High pressure circuit flow summation   | + |
| High pressure circuit with Tool Control (20 attachment adjustments on display) | + |
| Liebherr hydraulic oil   | ● |
| Liebherr hydraulic oil, adapted for extreme climate conditions                 | + |
| Medium pressure circuit  | + |

## Engine

|  |   |
|--|---|
| Air pre-filter with cyclonical dust trap | + |
| Air pre-filter with oil bath dust trap   | + |
| Pre-heating system for fuel              | + |

## Cab

|  |                 |
|--|-----------------|
| Acoustic travel alarm deactivatable      | +               |
| Auxiliary heater programmable            | +               |
| Cold kit -30 °C                          | +               |
| Cold kit -40 °C                          | +               |
| Dark tinted windows                      | +               |
| Electric socket in cabin (12 V)          | +               |
| Emergency stop in cab                    | +               |
| FGPS front guard                         | +               |
| FGPS front guard tiltable                | +               |
| FOPS top guard                           | +               |
| Handrests elevated for joysticks         | +               |
| Headlights on cab, front, LED, 2 pieces  | ● <sup>1)</sup> |
| Headlights on cab, front, LED+, 2 pieces | + <sup>1)</sup> |
| Luminosity control (LED+ headlights)     | +               |
| Operator seat Comfort                    | +               |
| Operator seat Standard                   | ●               |
| Overload warning system                  | +               |
| Radio Comfort                            | +               |
| Radio pre-installation                   | ●               |
| Rear view monitoring camera              | +               |
| Right hand side view monitoring camera   | +               |
| Roof window protection grid              | +               |
| ROPS safety cab structure (ISO 12117-2)  | +               |
| Rotating beacon on cabin, LED, 1 piece   | +               |
| Sun visor                                | +               |
| Windscreen bottom protection grid        | +               |

## Equipment

|  |                 |
|--|-----------------|
| Boom bottom protection                         | +               |
| Bucket cylinder rod protection                 | +               |
| Floating boom                                  | +               |
| Headlight on boom, right, LED, 1 piece         | ● <sup>1)</sup> |
| Headlight on boom, right, LED+, 1 piece        | + <sup>1)</sup> |
| Liebherr bucket range                          | +               |
| Liebherr tooth system                          | +               |
| Mono boom 6.45 m                               | +               |
| Mono boom SME 6.15 m                           | +               |
| Mono boom SME 6.45 m                           | +               |
| Pipe fracture safety valve for stick cylinder  | +               |
| Pipe fracture safety valves for boom cylinders | +               |
| Quick coupler SWA 66 hydraulic                 | +               |
| Quick coupler SWA 66 mechanical                | +               |
| Stick 2.60 m                                   | +               |
| Stick 2.90 m                                   | +               |
| Stick 3.25 m                                   | +               |
| Stick 3.95 m                                   | +               |
| Stick bottom protection                        | +               |
| Stick SME 2.15 m                               | +               |
| Stick SME 2.60 m                               | +               |

● = Standard, + = Option

<sup>1)</sup> Equipment not individually available, but only as predefined packages

Non-exhaustive list, please contact us for further information.

Options and / or special equipment, supplied by vendors other than Liebherr, are only to be installed with the knowledge and approval of Liebherr in order to retain warranty.



# The Liebherr Group



## Global and independent: more than 70 years of success

Liebherr was founded in 1949 when, with the development of the world's first mobile tower crane, Hans Liebherr laid the foundations for a family business now employing nearly 51,000 people and comprising over 140 companies across every continent.

The parent company is Liebherr-International AG in Bulle, Switzerland, whose associates are exclusively members of the Liebherr family.

## Leaders and pioneers

Liebherr is a pioneer and its forward-looking approach has seen it make important contributions to technology history over a wide variety of industries. Employees throughout the world continue to share the courage of the founder, sharing a passion to produce innovative products and a determination to provide world-leading equipment and machinery.

## Diversified portfolio

The company is one of the world's biggest construction equipment manufacturers and provides high-quality, user-oriented products and services to sectors including: earthmoving, material handling, deep foundations, mining, mobile and crawler cranes, tower cranes, concrete production and distribution, maritime cranes, aerospace and transportation, gear technology and automation, refrigeration and freezing, components and hotels.

## Customised care

Liebherr solutions are characterised by precision, implementation and longevity. The company is committed to technological excellence and to providing customers with solutions that match their needs exactly. That customer focus does not end with delivery of a product but continues through a comprehensive range of back-up and support services.

[www.liebherr.com](http://www.liebherr.com)

## Liebherr-France SAS

2 avenue Joseph Rey, B.P. 90287 • 68005 Colmar Cedex, France • Phone +33 389 213030  
info.lfr@liebherr.com • [www.liebherr.com](http://www.liebherr.com) • [www.facebook.com/LiebherrConstruction](https://www.facebook.com/LiebherrConstruction)