

The largest of a successful family.

# 125 K



#### Technical data

Max. lifting capacity	8,000 kg
Max. radius	55 m
Max. lifting capacity at the jib head	1,300 kg
Maximum hook height	65 m

# LIEBHERR

# 125 K



**External cabin**  
for optional use, can be installed  
without additional equipment

**SPEED2LIFT**  
Pure 2-line operation for  
maximum handling capacity

**Intelligent control system**  
PLC system, graphic display,  
remote diagnostic, etc.

**MICROMOVE**  
Fine positioning with  
millimetre precision at  
the touch of a button

**Load Plus**  
Hoist up to 20 % more by  
reducing drive unit speeds

**Ten different intermediate  
hook heights**  
from 19.3 m to 41.5 m

## The largest of a successful family.

A modern crane with a long history – the K series has been a common sight on construction sites around the world for years. The series has been extended upwards with the 125 K. The modern control system, compact footprint on the construction site and outstanding performance values make the 125 K the clear leader among fast-erecting cranes in its class.

You get the performance of a top-slewing crane with all the benefits and mobility of a fast-erecting crane.

Maximum hook height of 41.5 m  
or up to 65.5 m with a 30° luffed position



55 m jib length  
Jib can be split  
(35 m, 40 m, 45 m, 50 m, 55 m)

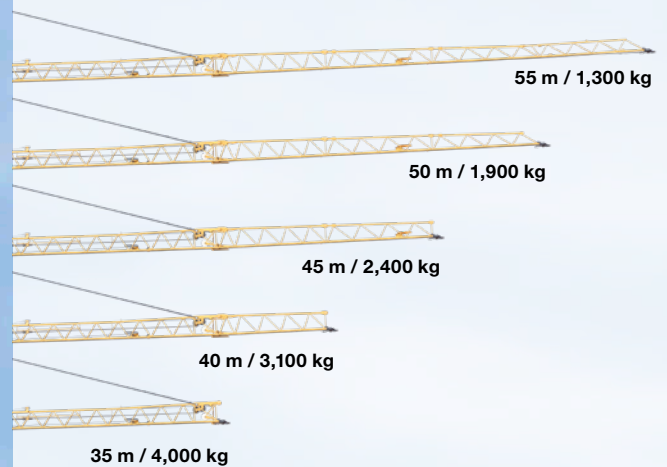
The 125 K can be transported in the form of a trailer or semitrailer using the Liebherr axle portfolio



Variable slewing radii



Range with carry



### Rail travel gear

If you have a large project, the crane can also be used with rail travel gear. This even allows the crane to be moved with a load.



### LED construction site lamps

Durable, reliable LED floodlights allow you to decide when your working day ends.



### Modern radio control

Developed with customers and proven through many jobs on your construction sites.





## Familiarly good – the K series.

### From the very beginning...

- Low-cost transport:
  - with a modular range of axles
  - all ready to go
- Low-cost assembly
  - with low-maintenance rope kinematics
  - thanks to self-ballasting mode
  - simple scaling
- Fast climbing allows various hook heights to be used:
 

– tower retracted	19.3 m
– tower extended	29.5 m
– 5 tower sections inserted	41.5 m
– 30° luffed jib position	65.5 m

### ... to a safe conclusion

- High handling capacities:
  - high-speed, low-maintenance, high-performance driving units
  - radio control and control system from the cabin
- Litronic –
  - safety-based control system with modern assistance systems
  - operating-range limiting system
  - SPEED2LIFT for high handling capacity
  - oscillation-damping system and wind force moment control for jib stabilisation at load transport
  - Micromove fine positioning system
  - lifting capacity increase using Load-Plus up to 20 %
  - adjustable slewing gear modes for free adjustment of the turning performance