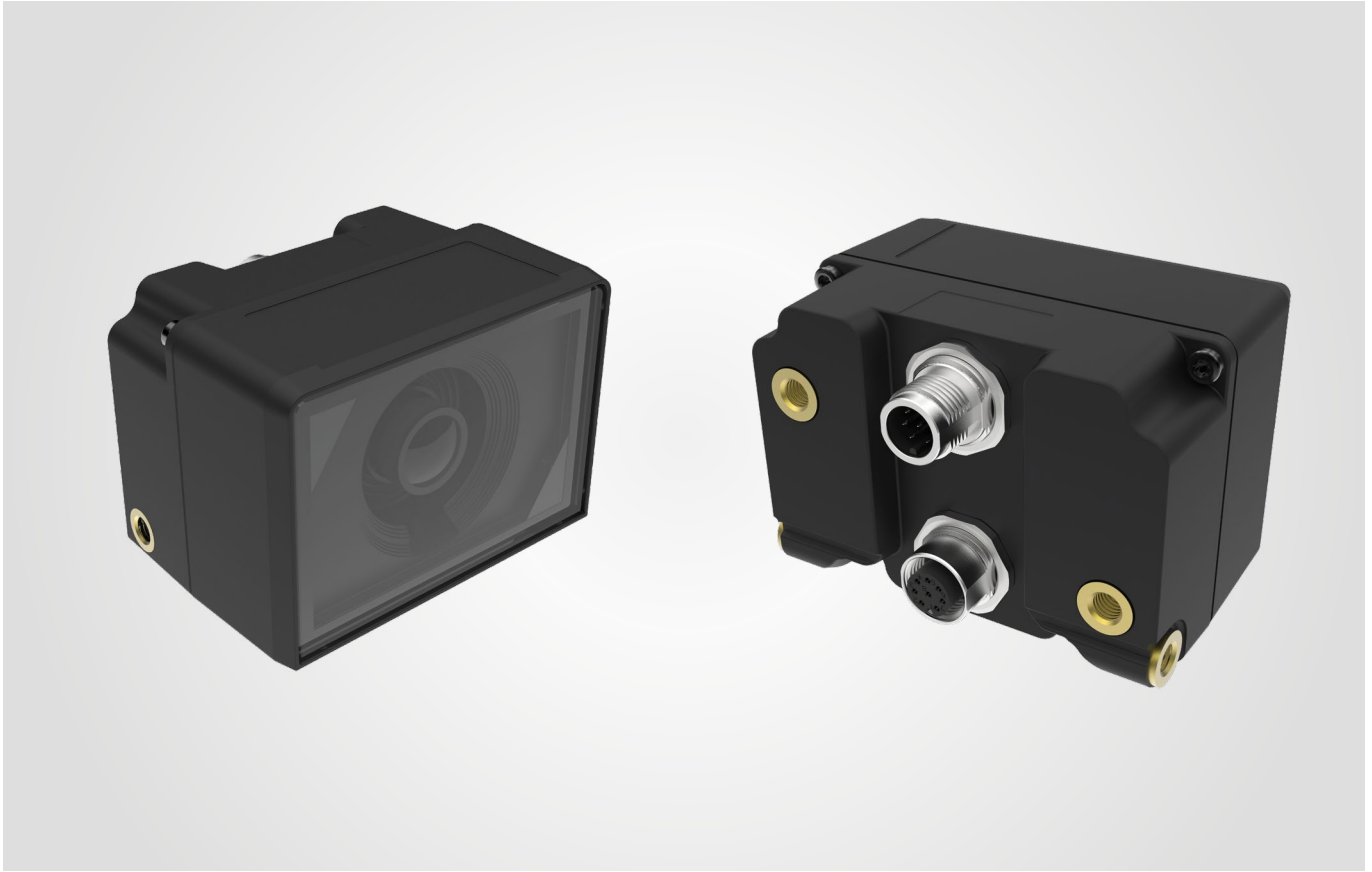


## Short Description

# Mobile Digital Camera MDC3



The MDC3 is specially qualified for harsh operational conditions. Designed for mobile machinery, the high-definition camera is ideal for monitoring areas which are difficult to see by the operator and hence provides additional safety. The camera further increases operational comfort and allows for enhanced working efficiency. To ensure a smooth video footage on the display, the data rate (bit/s) is adjustable. The camera is also capable of identifying and transferring visual information like edges of objects. In addition, the camera automatically and reliably keeps the objective free from ice and fog – ensuring clear view even at extreme temperatures.

Via Ethernet interface it is easy to integrate the camera into a higher-level control system or to connect it to a display unit. The integrated Ethernet switch provides an additional Ethernet port. So, the MDC3 can be directly connected to other cameras. Thus, multiple cameras require only one central Ethernet port.

### Features

- Resolution: max. 1,280 x 960 pixels
- High Dynamic Range (HDR)
- -40 °C up to +85 °C
- Frame rate up to 40 fps
- Minimal latency
- Integrated Ethernet switch
- HFOV: 30°, 60°, 90°, 120°
- Anti-ice and anti-fog function
- Highly resilient

# Technical Data

## Mobile Digital Camera MDC3

### Technical Data

Image resolution	320 x 176 to max. 1,280 x 960 pixels
Colour resolution	24-bit HDR
Horizontal field of view	30°, 60°, 90°, 120° <sup>1)</sup>
Latency	≤ 75 ms (picture to interface)
Frame rate	Max. 40 fps
Video format	MJPEG/H.264
Ethernet interfaces	2 x 100 BASE-TX in accordance with IEEE 802.3
Operating voltage	9 V to 32 V
Power rating	6 W to 24 W
Dimensions (W/H/D)	77 x 55 x 60 mm
Weight	Approx. 160 g
Housing	Polyurethane (095GF)
Connector type	2 x M12-8A (male / female, incl. 4 pins PWR)
Operating temperature	-40 °C to +85 °C
IP rating	IP6K7, IP6K9K according to ISO 20653

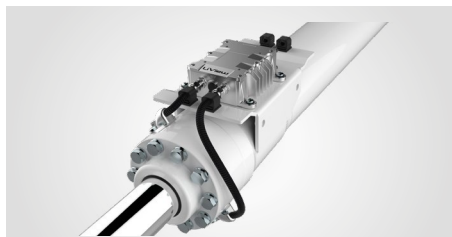
<sup>1)</sup> Further horizontal field of view angles upon request

### Sensor functions

Edge detection, optical flow

### Accessories

Protective cap for plugs (plastic or metal), mounting bracket, initial operation cable M12/RJ45, daisy chain cable M12/M12



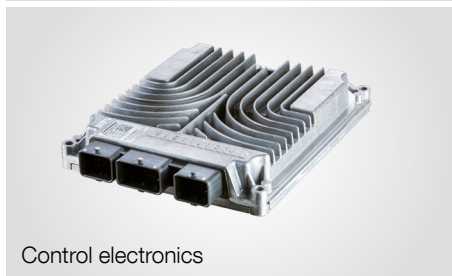
Position transducer for cylinders



Cameras



Keyboard units



Control electronics



Telematics



Display & control