
R 992 Litronic

LIEBHERR

Crawler excavator



Generation

5.2

Engine

420 kW / 571 HP
Stage IIIA
(compliant)

Operating weight

Backhoe: 85,800–95,000 kg
Shovel: 91,500–93,300 kg

Bucket capacity

Backhoe: 4.20–6.80 m³
Shovel: 5.10–6.00 m³

Experience progress: R 992

Equipment

- Wide choice of backhoe front boom and stick configurations
- Welded structure with cast steel components for improved stress-resistance and longer service life
- Safety check valves to prevent boom and stick cylinder pipes from bursting, with integrated regeneration system for lower fuel consumption

Buckets

- Different levels of protection to suit different areas of application:
 - Standard for loose, non-abrasive materials
 - HD for hard-to-break, moderately abrasive materials
 - HDV for highly abrasive materials
- Different blade designs:
 - straight (for earth-moving and grading)
 - semi-delta (for hard-to-break, hard-to-extract materials)
 - delta (for compacted or slightly cracked materials)

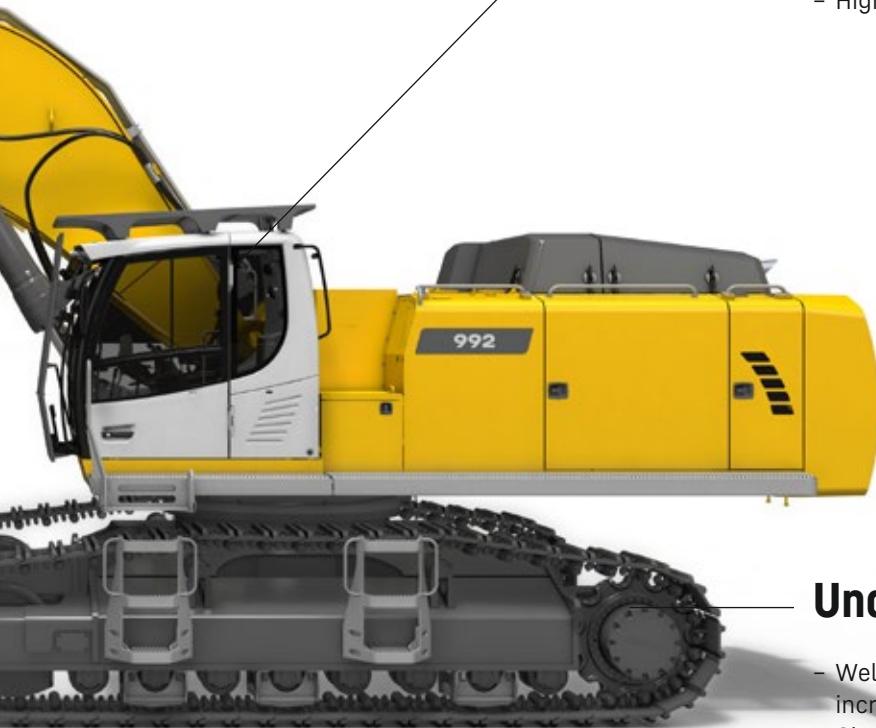


New functions / options

- **Liebherr Power Efficiency – Engine Control**
Up to 10% lower fuel consumption
- **Bucket Fill Assist**
Automatic bucket-filling cycle for increased productivity
- **Modetronic**
Customisable operating modes for optimum adjustment of work cycles to each type of application

Comfort

- Quiet, comfortable cab, the largest and most spacious in its category
- Seat with heater and pneumatic multi-directional shock absorption (air conditioning optional)
- High-resolution 9" color touchscreen



Undercarriage

- Welded undercarriage with rigid X profile for increased robustness
- Chamfered rack pads with double grouser for more manoeuvrability on difficult terrain
- Moulded two-tooth sprocket for longer service life
- Track rollers on double bearings for increased reliability and durability over time
- Stronger travel motor housing protection for improved resistance to wear and tear from hard, abrasive rocks

Experience progress: R 992 Shovel

Safety

- Completely unobstructed panoramic view, plus rear-view and side-view monitoring cameras for increased safety
- Retractable console for safe and easy access to the cab
- Impact-resistant windscreen and roof glass panel
- Cab riser for the best possible view of the loading area (optional)

Equipment

- Cast steel parts
- Shovel attachment with parallel drivetrain for powerful, even penetration
- Bucket cylinders positioned under the equipment for better protection against the elements
- Safety valves on boom cylinder for pipe burst protection

Buckets

- The front shovel is the perfect shape for digging deep into the material and for a high filling rate
- Several levels of protection for the front shovel, depending on requirements:
 - Type I: Non-abrasive materials, such as limestone without flint
 - Type II: Shot material, or easily breakable rock (classification 3 to 4 according to DIN 18300)
 - Type III: Highly abrasive materials, such as rocks with a high silica content, sandstone, granite, etc.
- Different design of blades: straight blade (loading), semi-delta (compacted materials), delta (direct excavation)
- Front shovel with semi-automatic flap closure, ideally shaped for optimum material penetration and high filling rate





Cab

- Comfortable and ergonomic design
- 9" high-resolution colour touch screen
- Wider for more comfort
- Impact resistant windows at the front and in the roof as standard
- Optional FOPS and FGPS protection guards
- Operator's cab with a fixed riser for a full view over the work area

Maintenance

- Access platform for engine and hydraulic control block compartments to enable safe, ergonomic maintenance work
- Left and right catwalks as standard; wide catwalks with hand rail optional
- Automatic central lubrication system as standard
- Shut-off valve on hydraulic tank outlet as standard

Technical data



Engine

Rating per ISO 9249	420kW (571HP) at 1,800RPM
Torque	2,939Nm at 1,300RPM
Model	Liebherr D9508 A7
Type	8 cylinder V engine
Bore	128mm
Stroke	157mm
Displacement	16.16l
Engine operation	4-stroke diesel Common-Rail
Exhaust gas treatment	Engine Stage IIIA: with EGR
Cooling system	Water-cooled and integrated motor oil cooler, after-cooled and fuel cooled
Air cleaner	Dry-type air cleaner with pre-cleaner, primary and safety elements
Fuel tank	1,498l
Electrical system	
Voltage	24V
Batteries	2 x 180Ah/12V
Starter	24V/7.8kW
Alternator	Three-phase current 28V/140A
Engine idling	Sensor controlled
Motor management	Connection to the integrated excavator system controlling via CAN-BUS to the economical utilisation of the service that is available



Hydraulic controls

Power distribution	Via control valves in single block with integrated safety valves
Flow summation	To boom and stick
Closed-loop circuit	For uppercarriage swing drive
Servo circuit	Electro-hydraulic control
Equipment and swing	Proportional via joystick levers
Travel	- Proportional control via foot pedals or removable levers - Speed pre-selection
Additional functions	Proportional regulation via foot pedals or mini-joystick



Hydraulic system

Hydraulic pumps	Two Liebherr variable displacement, swashplate pumps
For equipment and travel drive	Two x 498l/min.
Max. flow	350 bar
Max. pressure	Reversible, variable displacement, swashplate pump, closed-loop circuit
For swing drive	315l/min.
Max. flow	350 bar
Max. pressure	Electro-hydraulic with electronic engine speed sensing regulation, minimum flow adjustment, flow compensation, high flow
Pump regulation	536l
Hydraulic tank	1,134l
Hydraulic system	2 full flow filters in return line with integrated fine filter area (5µm)
Filtration	Cooler for transmission pump oil and cooler for oil and condenser of air-conditioning with hydrostatically controlled fan drives
Cooling system	
MODE selection	Adjustment of engine and hydraulic performance via a mode pre-selector to match application, e.g. for especially economical and environmentally friendly operation or for maximum digging performance and heavy-duty jobs
RPM adjustment	Stepless adjustment of engine output via RPM at each selected mode
Tool Control	20 pre-adjustable pump flows and pressures for add-on attachments



Swing drive

Drive	Liebherr swashplate motor with integrated brake valve
Transmission	Liebherr compact planetary reduction gears
Swing ring	Liebherr, sealed race ball bearing swing ring, internal teeth
Swing speed	0-5.9RPM stepless
Swing torque	295kNm
Holding brake	Wet multi-disc (spring applied, pressure released)



Cab

Cab	LED work headlights integrated in the ceiling, a door with a sliding window (can be opened on both sides), large storing box and several stowing possibilities, shock-absorbing suspension, sound damping insulating, tinted laminated safety glass, separate window shades for the sunroof window and windscreen, cigarette lighter and 12V plug, storage bins, lunchbox, cup holder
Operator's seat	Liebherr-Comfort seat, airsprung with automatic weight adjustment, vertical and longitudinal seat damping including consoles and joysticks. Seat and armrests adjustable separately and in combination (adjustable in length, height and inclination), seat heating as standard
Arm consoles	Oscillating consoles with seat, tiltable console left
Operation and displays	Large high-resolution operating unit, intuitive, colour display with touchscreen, video-compatible, numerous setting, control and monitoring options, e.g. air conditioning control, fuel consumption, machine and attachment parameters
Air-conditioning	Automatic air-conditioning, recirculated air function, fast de-icing and demisting at the press of a button, air vents can be operated via a menu. Recirculated air and fresh air filters can be easily replaced and are accessible from the outside. Heating-cooling unit, designed for extreme outside temperatures, sensors for solar radiation, inside and outside temperatures
Noise emission ISO 6396 2000/14/EC	80 dB(A) = L_{pA} (inside cab) 110 dB(A) = L_{WA} (surround noise)



Undercarriage

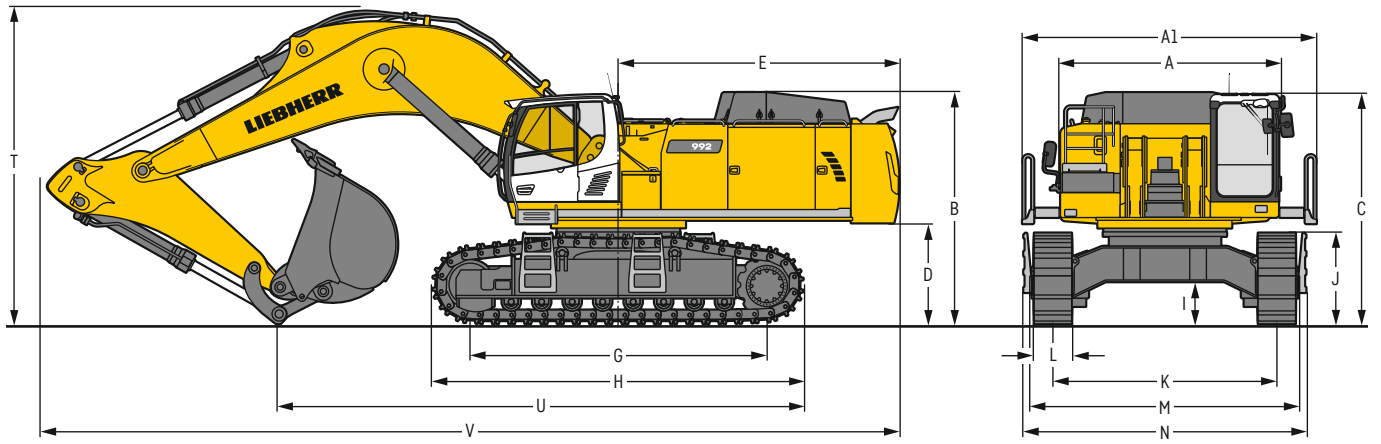
Versions	
HD	Gauge 3,600 mm
LC-V	Gauge 3,590 mm
Drive	Liebherr swashplate motor with brake valves on both sides
Transmission	Liebherr compact planetary reduction gear
Maximum travel speed	4.3 km/h
Drawbar pull on crawler	568 kN
Track components	D9G, maintenance-free
Track rollers / Carrier rollers	8 / 2 (HD) 9 / 3 (LC-V)
Tracks	Sealed and greased
Track pads	Double grouser
Holding brake	Wet multi-disc (spring applied, pressure released)
Brake valves	Outside the travel motor
Lashing eyes	Integrated



Equipment

Type	Combination of resistant steel plates and cast steel components
Hydraulic cylinders	Liebherr cylinders with seal and guidance systems
Bearings	Sealed, low maintenance
Lubrication	Automatic central lubrication system (except link and tilt geometry)
Hydraulic connections	Pipes and hoses equipped with SAE split-flange connections
Buckets	Standard equipped with Liebherr tooth system

Dimensions



		HD	mm	LC-V	mm
A	Uppercarriage width		3,565		3,565
A1	Uppercarriage width with catwalks		4,730		4,730
B	Uppercarriage height		3,725		3,865
C	Cab height		3,695		3,835
D	Counterweight ground clearance		1,620		1,755
E	Rear-end length		4,515		4,515
G	Wheelbase		4,770		5,160
H	Undercarriage length		5,960		6,335
I	Undercarriage ground clearance		690		950
J	Track height		1,460		1,495
K	Track gauge		3,600		2,750 / 3,590 ¹⁾
L	Track pad width		500 600 750		500 600 750
M	Width over tracks		4,380 4,380 4,380		3,490 / 4,330 ¹⁾ 3,490 / 4,330 ¹⁾ 3,500 / 4,340 ¹⁾
N	Width over steps		5,010 5,010 5,010		4,045 / 4,885 ¹⁾ 4,045 / 4,885 ¹⁾ 4,045 / 4,885 ¹⁾

¹⁾ work position

		Stick length m	Mono boom 7.20 m direct mounting	
			HD mm	LC-V mm
T	Boom height	2.90	5,100	5,150
		3.30	5,250	5,350
U	Length on ground	2.90	8,450	8,600
		3.30	8,200	8,350
V	Overall length	2.90	13,800	13,800
		3.30	13,500	13,500
	Bucket		5.20 m ³	

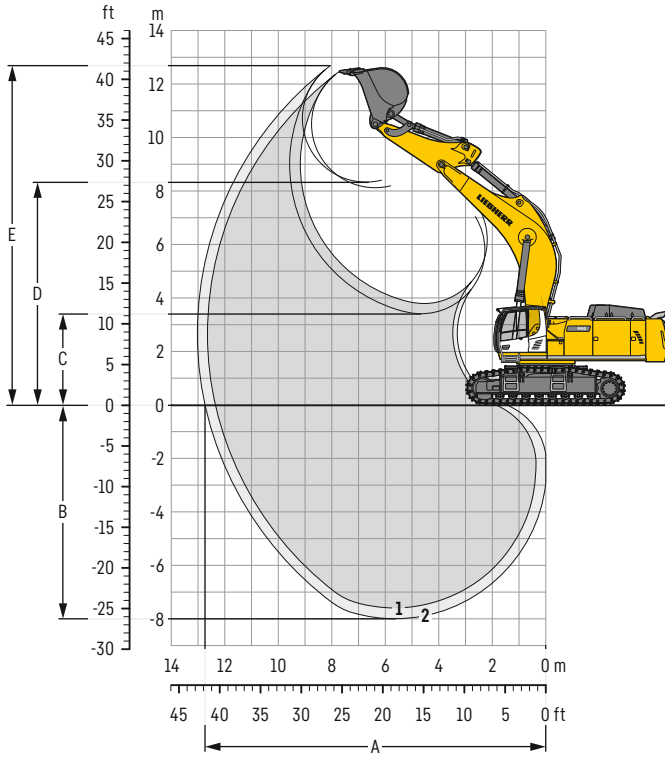
Transport dimensions

removable elements disassembled

		Mono boom 7.20 m	
		mm	
Transport width		4,730	
	Undercarriage/ Stick m	HD	LC-V
		mm	
Transport length	2.90	13,800	13,800
	3.30	13,500	13,500
Transport height	2.90	5,100	5,150
	3.30	5,250	5,350
Bucket		5.20 m ³	

Backhoe bucket

with mono boom 7.20 m



Digging envelope

without quick coupler		1	2
Stick length	m	2.90	3.30
A Max. reach at ground level	m	12.30	12.70
B Max. digging depth	m	7.45	7.85
C Min. dumping height	m	3.80	3.40
D Max. dumping height	m	8.25	8.50
E Max. cutting height	m	12.60	12.85

Forces

without quick coupler		1	2
Stick digging force (ISO 6015)	kN	390	361
Bucket digging force (ISO 6015)	kN	485	485
Stick digging force (SAE J1179)	kN	374	347
Bucket digging force (SAE J1179)	kN	437	437

Operating weight and ground pressure

The operating weight includes the basic machine with counterweight 14.1t, mono boom 7.20 m, stick 2.90 m and bucket 5.20 m³ (4,650 kg).

Undercarriage		HD		
Pad width	mm	500	600	750
Weight	kg	85,800	86,600	87,700
Ground pressure	kg/cm ²	1.65	1.39	1.13

Undercarriage		LC-V		
Pad width	mm	500	600	750
Weight	kg	91,200	92,000	93,100
Ground pressure	kg/cm ²	1.64	1.38	1.12

The operating weight includes the basic machine with counterweight 16.0t, mono boom 7.20 m, stick 2.90 m and bucket 5.20 m³ (4,650 kg).

Undercarriage		HD		
Pad width	mm	500	600	750
Weight	kg	87,700	88,500	89,600
Ground pressure	kg/cm ²	1.69	1.43	1.17

Undercarriage		LC-V		
Pad width	mm	500	600	750
Weight	kg	93,100	93,900	95,000
Ground pressure	kg/cm ²	1.68	1.42	1.16

Buckets Machine stability per ISO 10567* (75% of tipping capacity)

Cutting width mm	Capacity ISO 7451 m ³	Weight kg	HD undercarriage (with track pads 600 mm)		LC-V undercarriage (with track pads 600 mm)	
			Stick length (m)		Stick length (m)	
			2.90	3.30	2.90	3.30
with counterweight 14.1 t						
STD ¹⁾	2,200	5.20	4,650	▲	▲	▲
	2,300	5.60	4,850	▲	▲	▲
	2,300	6.20	5,050	■	▲	■
	2,500	6.80	5,400	▲	■	▲
HD ²⁾	2,200	4.60	5,100	▲	▲	▲
	2,200	5.20	5,300	▲	▲	▲
	2,300	5.60	5,550	▲	■	▲
	2,300	6.20	5,800	■	▲	■
HDV ³⁾	2,000	4.20	5,600	▲	▲	▲
	2,200	4.70	5,850	▲	▲	▲
	2,200	5.20	6,250	▲	■	▲
	2,300	5.70	6,500	■	▲	■
with counterweight 16.0 t						
STD ¹⁾	2,200	5.20	4,650	▲	▲	▲
	2,300	5.60	4,850	▲	▲	▲
	2,300	6.20	5,050	▲	■	▲
	2,500	6.80	5,400	▲	▲	■
HD ²⁾	2,200	4.60	5,100	▲	▲	▲
	2,200	5.20	5,300	▲	▲	▲
	2,300	5.60	5,550	▲	▲	▲
	2,300	6.20	5,800	▲	■	▲
HDV ³⁾	2,000	4.20	5,600	▲	▲	▲
	2,200	4.70	5,850	▲	▲	▲
	2,200	5.20	6,250	▲	▲	▲
	2,300	5.70	6,500	▲	■	▲

* Indicated loads are based on ISO 10567, at maximum reach, and may be swung 360° on firm and even ground

¹⁾ Standard bucket with Liebherr teeth Z 90

²⁾ HD bucket with Liebherr teeth Z 90

³⁾ HDV bucket with Liebherr teeth Z 90

Other buckets available upon request

Max. material weight ▲ = ≤ 2.0t/m³, ■ = ≤ 1.8t/m³, ▲ = ≤ 1.65t/m³, ■ = ≤ 1.5t/m³

Lift capacities

with mono boom 7.20 m, counterweight 14.1 t and track pads 600 mm

Stick 2.90 m

Under-carriage m	3.0m		4.5m		6.0m		7.5m		9.0m		10.5m		m	
10.5													23.9* 23.9*	6.4
9.0													21.3* 21.3*	8.0
7.5													19.5 20.2*	9.0
6.0					27.7* 27.7*								16.9 19.9*	9.7
4.5					31.9* 31.9*	23.6* 23.6*							15.5 19.9	10.1
3.0					32.2 35.5*	24.6 25.6*							14.7 19.0	10.3
1.5					30.1 37.0*	21.8 28.9*							15.0 19.5	9.9
0					29.9 35.1*	17.4 22.7							16.1 21.1*	9.3
-1.5			38.5* 38.5*		30.2 31.4*	16.9 22.1							18.6 20.7*	8.5
-3.0	40.6* 40.6*		38.9* 38.9*		21.8 25.0*								19.2* 19.2*	7.1
-4.5			30.5* 30.5*		24.6* 24.6*									
10.5													23.5* 23.5*	6.4
9.0													21.2* 21.2*	8.0
7.5													20.1 20.2*	9.0
6.0					28.0* 28.0*	23.7* 23.7*							17.6 19.9*	9.7
4.5					32.2* 32.2*	25.7 25.8*							16.2 20.2*	10.1
3.0					33.6 35.7*	19.5 22.3*							15.5 20.8*	10.3
1.5					32.2 37.3*	18.8 23.2*							15.4 20.9*	10.2
0					31.6 36.9*	17.9 23.7*							15.9 21.1*	9.9
-1.5			40.4* 40.4*		31.5 34.9*	17.8 22.2*							17.2 21.1*	9.3
-3.0	42.5* 42.5*		38.4* 38.4*		23.0 24.5*								19.9 20.6*	8.5
-4.5			29.5* 29.5*		23.8* 23.8*								18.9* 18.9*	7.1

Stick 3.30 m

Under-carriage m	3.0m		4.5m		6.0m		7.5m		9.0m		10.5m		m	
10.5													20.1* 20.1*	7.0
9.0													18.2* 18.2*	8.4
7.5													17.3* 17.3*	9.4
6.0													15.9 17.1*	10.1
4.5													14.6 17.3*	10.5
3.0													13.9 18.0*	10.6
1.5													14.1 18.3	10.3
0													15.1 19.7	9.7
-1.5			36.8* 36.8*										17.1 20.1*	8.9
-3.0	36.6* 36.6*		41.3* 41.3*										19.1* 19.1*	7.7
-4.5			33.5* 33.5*											
10.5													19.9* 19.9*	7.0
9.0													18.1* 18.1*	8.4
7.5													17.3* 17.3*	9.4
6.0													16.5 17.1*	10.1
4.5													15.3 17.4*	10.5
3.0													14.6 18.0*	10.6
1.5													14.5 19.3*	10.6
0													14.9 20.1*	10.3
-1.5			38.3* 38.3*										16.0 20.2*	9.7
-3.0	38.2* 38.2*		40.8* 40.8*										18.3 20.0*	8.9
-4.5			32.7* 32.7*										18.9* 18.9*	7.7

Height Can be slewed through 360° In longitudinal position of undercarriage Max. reach * Limited by hydr. capacity

The load values are quoted in tons (t) at stick end (without bucket), and may be swung 360° on firm and even ground. Adjacent values are valid for the undercarriage when in the longitudinal position. Capacities are valid for 600 mm wide track pads. Indicated loads are based on ISO 10567 standard and do not exceed 75% of tipping or 87% of hydraulic capacity (indicated via *). Without bucket cylinder, link and lever the lift capacities will increase by 1,320 kg. Lifting capacity of the excavator is limited by machine stability and hydraulic capacity.

According to European Standard, EN 474-5: In the European Union excavators have to be equipped with an overload warning device, a load diagram and automatic safety check valves on hoist cylinders and stick cylinder(s), when they are used for lifting operations which require the use of lifting accessories.

Determine maximum load lift from load lift chart displayed in the operator's cab or from load lift chart detailed in the operator's manual supplied with the machine.

Lift capacities

with mono boom 7.20 m, counterweight 16.0 t and track pads 600 mm

Stick 2.90 m

Under-carriage m	3.0m		4.5m		6.0m		7.5m		9.0m		10.5m		m	
10.5												23.9*	23.9*	6.4
9.0							21.9*	21.9*				21.3*	21.3*	8.0
7.5							22.1*	22.1*	20.4*	20.4*		20.2*	20.2*	9.0
6.0					27.7*	27.7*	23.6*	23.6*	20.5	21.3*		18.0	19.9*	9.7
4.5					31.9*	31.9*	25.6*	25.6*	19.9	22.2*		16.5	20.2*	10.1
3.0					34.3	35.5*	25.0	27.6*	19.2	23.2*		15.8	20.2	10.3
1.5					32.9	37.2*	24.0	28.9*	18.6	23.8*		15.6	20.1	10.2
0					32.2	37.0*	23.4	29.1*	18.2	23.7		16.0	20.7	9.9
-1.5			38.5*	38.5*	32.0	35.1*	23.1	28.0*	18.1	22.4*		17.3	21.1*	9.3
-3.0	40.6*	40.6*	38.9*	38.9*	31.4*	31.4*	23.3	25.0*				19.9	20.7*	8.5
-4.5			30.5*	30.5*	24.6*	24.6*						19.2*	19.2*	7.1
10.5												23.5*	23.5*	6.4
9.0							21.9*	21.9*				21.2*	21.2*	8.0
7.5							22.2*	22.2*	21.1*	21.1*		20.2*	20.2*	9.0
6.0					28.0*	28.0*	23.7*	23.7*	21.3	21.4*		18.7	19.9*	9.7
4.5					32.2*	32.2*	25.8*	25.8*	20.7	22.3*		17.2	20.2*	10.1
3.0					35.7	35.7*	26.0	27.7*	20.0	23.2*		16.5	20.8*	10.3
1.5					34.3	37.3*	25.1	28.9*	19.5	23.9*		16.4	20.9*	10.2
0					33.7	36.9*	24.5	29.1*	19.1	23.7*		16.9	21.1*	9.9
-1.5			40.4*	40.4*	33.6	34.9*	24.3	27.8*	19.0	22.2*		18.3	21.1*	9.3
-3.0	42.5*	42.5*	38.4*	38.4*	31.0*	31.0*	24.5	24.5*				20.6*	20.6*	8.5
-4.5			29.5*	29.5*	23.8*	23.8*						18.9*	18.9*	7.1

Stick 3.30 m

Under-carriage m	3.0m		4.5m		6.0m		7.5m		9.0m		10.5m		m	
10.5												20.1*	20.1*	7.0
9.0							20.6*	20.6*				18.2*	18.2*	8.4
7.5							21.0*	21.0*	20.0*	20.0*		17.3*	17.3*	9.4
6.0					26.3*	26.3*	22.6*	22.6*	20.5*	20.5*		17.0	17.1*	10.1
4.5					30.6*	30.6*	24.8*	24.8*	20.0	21.5*		15.6	17.3*	10.5
3.0					34.5*	34.5*	25.1	26.9*	19.2	22.7*	15.2	14.9	18.0*	10.6
1.5					33.2	36.8*	24.1	28.5*	18.6	23.5*	14.9	14.7	19.0	10.6
0					32.3	37.2*	23.4	29.0*	18.2	23.6		15.1	19.5	10.3
-1.5			36.8*	36.8*	32.0	35.8*	23.1	28.3*	17.9	22.8*		16.2	20.2*	9.7
-3.0	36.6*	36.6*	41.3*	41.3*	32.1	32.6*	23.1	25.9*				18.4	20.1*	8.9
-4.5			33.5*	33.5*	26.8*	26.8*	20.1*	20.1*				19.1*	19.1*	7.7
10.5												19.9*	19.9*	7.0
9.0							20.5*	20.5*				18.1*	18.1*	8.4
7.5							21.1*	21.1*	20.0*	20.0*		17.3*	17.3*	9.4
6.0					26.7*	26.7*	22.8*	22.8*	20.5*	20.5*		17.1*	17.1*	10.1
4.5					31.0*	31.0*	25.0*	25.0*	20.8	21.6*	16.3	16.3	17.4*	10.5
3.0					34.8*	34.8*	26.2	27.1*	20.1	22.7*	15.9	15.6	18.0*	10.6
1.5					34.6	36.9*	25.1	28.6*	19.5	23.6*	15.6	15.5	19.3*	10.6
0					33.7	37.1*	24.5	29.0*	19.0	23.7*		16.0	20.1*	10.3
-1.5			38.3*	38.3*	33.5	35.6*	24.2	28.2*	18.9	22.7*		17.2	20.2*	9.7
-3.0	38.2*	38.2*	40.8*	40.8*	32.2*	32.2*	24.3	25.6*				19.6	20.0*	8.9
-4.5			32.7*	32.7*	26.1*	26.1*	19.2*	19.2*				18.9*	18.9*	7.7

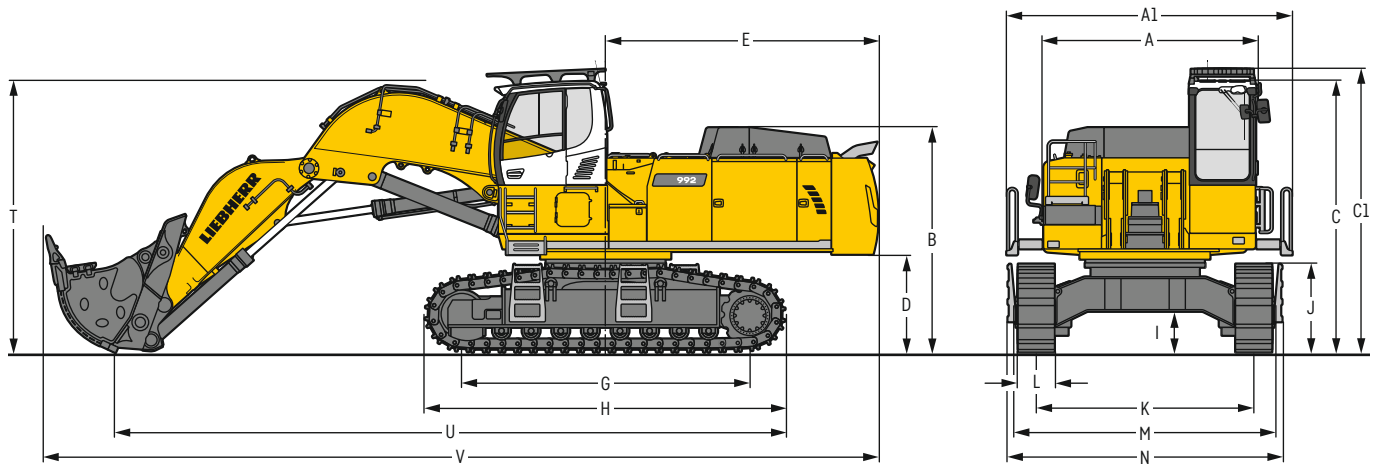
Height Can be slewed through 360° In longitudinal position of undercarriage Max. reach * Limited by hydr. capacity

The load values are quoted in tons (t) at stick end (without bucket), and may be swung 360° on firm and even ground. Adjacent values are valid for the undercarriage when in the longitudinal position. Capacities are valid for 600 mm wide track pads. Indicated loads are based on ISO 10567 standard and do not exceed 75% of tipping or 87% of hydraulic capacity (indicated via *). Without bucket cylinder, link and lever the lift capacities will increase by 1,320 kg. Lifting capacity of the excavator is limited by machine stability and hydraulic capacity.

According to European Standard, EN 474-5: In the European Union excavators have to be equipped with an overload warning device, a load diagram and automatic safety check valves on hoist cylinders and stick cylinder(s), when they are used for lifting operations which require the use of lifting accessories.

Determine maximum load lift from load lift chart displayed in the operator's cab or from load lift chart detailed in the operator's manual supplied with the machine.

Dimensions front shovel



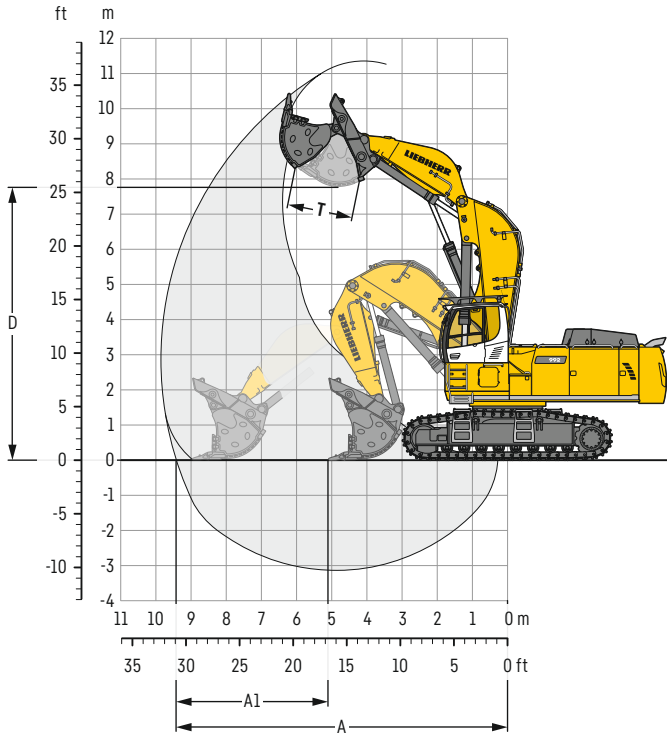
	HD	mm		HD	mm
A	Uppercarriage width	3,565	I	Undercarriage ground clearance	690
A1	Uppercarriage width with catwalks	4,730	J	Track height	1,460
B	Uppercarriage height	3,725	K	Track gauge	3,600
C	Cab height	4,495	L	Track pad width	500 600 750
C1	Cab height with FOPS top guard	4,690	M	Width over tracks	4,380 4,380 4,380
D	Counterweight ground clearance	1,620	N	Width over steps	5,010 5,010 5,010
E	Rear-end length	4,515	T	Boom height	4,500
G	Wheelbase	4,770	U	Length on ground	11,100
H	Undercarriage length	5,960	V	Overall length	13,850

Transport dimensions

removable elements disassembled

	Shovel equipment mm
Transport width	4,730
Transport length	13,850
Transport height	4,690
Shovel	5.10m ³

Front shovel



Digging envelope

A	Max. reach at ground level	m	9.40
A1	Max. crowd length	m	3.90
D	Max. dumping height	m	7.80
T	Bucket opening width	mm	1,825

Forces

Max. crowd force	kN	690
Max. crowd force at ground level	kN	490
Max. breakout force	kN	500

Operating weight and ground pressure

The operating weight includes the basic machine with cab elevation 800 mm, shovel equipment and front shovel 5.10 m³ (9,200 kg), level II.

		HD		
		500	600	750
Undercarriage				
Pad width	mm	500	600	750
Weight	kg	91,500	92,200	93,300
Ground pressure	kg/cm ²	1.76	1.48	1.20

Front shovels

Cutting width	Capacity ISO 7451	Weight	Wear kit level		
				mm	m ³
2,700	5.10	8,450	I		HD undercarriage
2,700	5.10	9,200	II	▲	Shovel equipment
2,700	5.10	10,150	III	■	
2,700	5.40	10,600	III	■	
2,700	5.60	8,750	I	■	
2,700	5.60	9,500	II	■	
2,700	6.00	9,950	I	▲	
2,700	6.00	10,700	II	■	

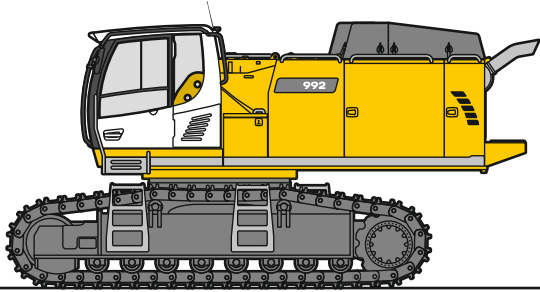
Level I: For non-abrasive materials, such as limestone without flint inclusion, shot material or easily breakable rock, i.e., deteriorated rock, soft limestone, shale, etc.

Level II: For pre-blasted heavy rock, or deteriorated, cracked material (classification 3 to 4, according to DIN 18300)

Level III: For highly-abrasive materials such as rock with a high silica content, sandstone etc.

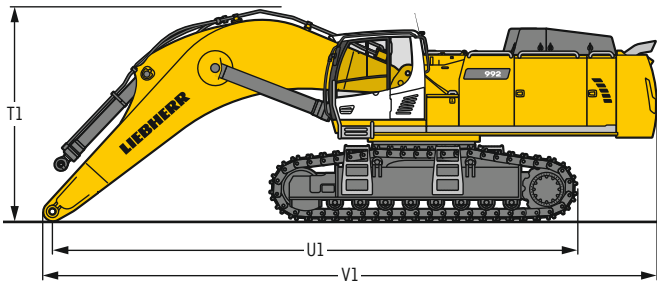
Max. material weight ▲ = ≤ 2.0t/m³, ■ = ≤ 1.8t/m³, ▲ = ≤ 1.65t/m³, ■ = ≤ 1.5t/m³

Dimensions and weights



Basic machine

Track pads	mm	500	600	750
Weight with backhoe equipment and HD undercarriage without counterweight	kg	51,050	51,800	52,900
Weight with shovel equipment and HD undercarriage without counterweight	kg	51,150	51,900	53,000
Weight with backhoe equipment and LC-V undercarriage without counterweight	kg	56,400	57,200	58,350



Machine without stick

		HD	LC-V
T1	mm	4,150	4,250
U1	mm	10,350	10,400
V1	mm	11,950	11,900



Cab elevation

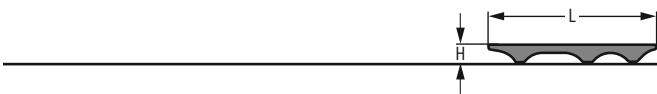
800 mm

L Length	mm	1,890
H Height	mm	925
Width	mm	1,370
Weight	kg	600



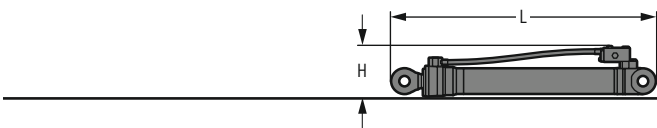
Counterweight

		Std	heavy
L Length	mm	775	775
H Height	mm	1,595	1,595
Width	mm	3,360	3,360
Weight	kg	14,100	16,000



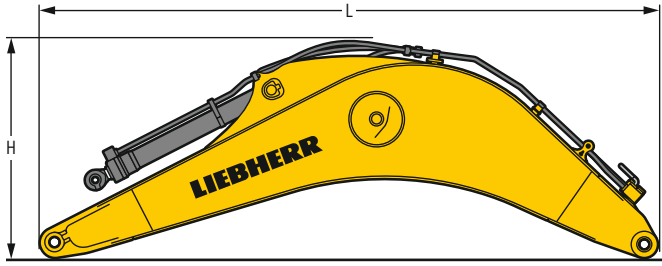
Upper protection screen

L Length	mm	1,960
H Height	mm	190
Width	mm	1,110
Weight	kg	75



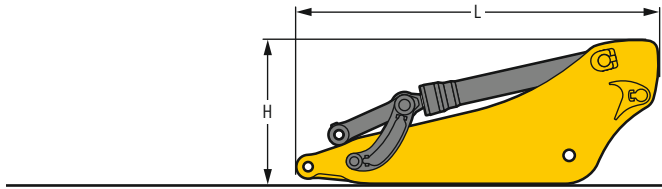
Hoist cylinders (two)

L Length	mm	2,920
H Height	mm	550
Width	mm	400
Weight	kg	2 x 1,050



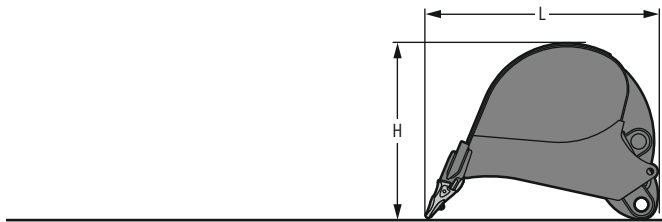
Mono boom with stick cylinder

Boom length	m	7.20
L Length	mm	7,550
H Height	mm	2,700
Width	mm	1,460
Weight	kg	9,500



Stick with bucket cylinder

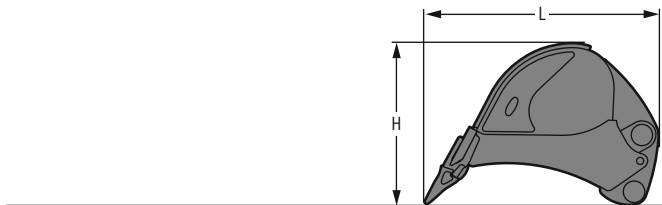
Stick length	m	2.90	3.30
L Length	mm	4,050	4,450
H Height	mm	1,700	1,650
Width	mm	900	900
Weight	kg	4,450	4,600



Backhoe buckets

Std

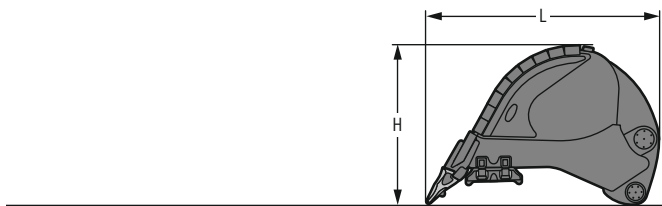
Cutting width	mm	2,200	2,300	2,300	2,500
Capacity	m ³	5.20	5.60	6.20	6.80
L Length	mm	2,750	2,750	2,850	2,850
H Height	mm	2,150	2,150	2,150	2,150
Width	mm	2,250	2,350	2,350	2,500
Weight	kg	4,650	4,850	5,050	5,400



Backhoe buckets

HD

Cutting width	mm	2,200	2,200	2,300	2,300
Capacity	m ³	4.60	5.20	5.60	6.20
L Length	mm	2,650	2,750	2,750	2,850
H Height	mm	2,100	2,150	2,150	2,150
Width	mm	2,250	2,250	2,350	2,350
Weight	kg	5,100	5,300	5,550	5,800

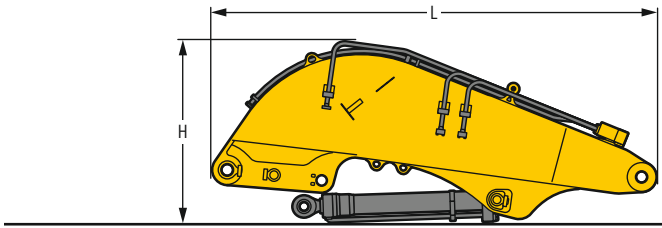


Backhoe buckets

HDV

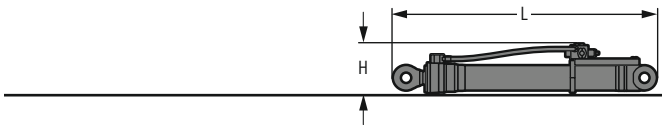
Cutting width	mm	2,000	2,200	2,200	2,300
Capacity	m ³	4.20	4.70	5.20	5.70
L Length	mm	2,650	2,650	2,750	2,750
H Height	mm	2,150	2,150	2,200	2,200
Width	mm	2,050	2,250	2,250	2,350
Weight	kg	5,600	5,850	6,250	6,500

Dimensions and weights



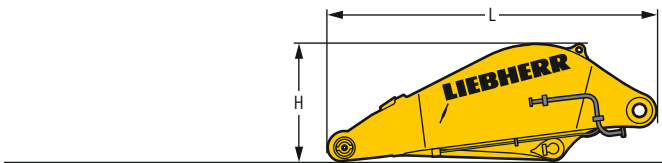
Shovel boom

L Length	mm	4,950
H Height	mm	2,050
Width	mm	1,650
Weight without crowd cylinder	kg	7,300
Weight crowd cylinder	kg	2 x 450



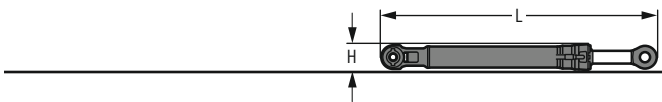
Shovel hoist cylinders (two)

L Length	mm	2,920
H Height	mm	550
Width	mm	450
Weight	kg	2 x 1,100



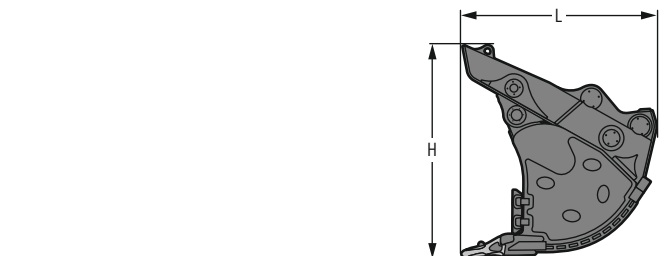
Shovel stick

L Length	mm	3,660
H Height	mm	1,300
Width	mm	1,800
Weight	kg	4,650



Shovel bucket cylinders (two)

L Length	mm	3,050
H Height	mm	450
Width	mm	450
Weight	kg	2 x 625



Front shovels

Cutting width	mm	2,700	2,700	2,700	2,700
Capacity	m ³	5.10	5.40	5.60	6.00
L Length	mm	2,600	2,500	2,620	2,550
H Height	mm	2,700	2,440	2,470	2,465
Width	mm	2,700	2,700	2,700	2,700
Weight					
Level I	kg	8,450	-	8,750	9,950
Level II	kg	9,200	-	9,500	10,700
Level III	kg	10,150	10,600	-	-

Serial equipment

Undercarriage

- Lashing eyes
- Sprocket with dirt ejector
- Track and carrier rollers, sealed and lifetime-lubricated
- Travel motor housing protection

Uppercarriage

- Access platforms without protruding parts
- Anti-skid surfaces
- Automatic swing brake lock
- Centralised lubrication system (automatic)
- Engine hood with gas spring opening
- Extended tool set including tool box
- Handrails
- Liebherr Power Efficiency – Engine Control
- Lockable fuel tank cap with padlock
- Lockable service doors
- Lockable storage box
- Main switch, accessible from ground level
- Pre-heating system for fuel
- Protection grid on radiator fan
- Sound insulation
- Swing-out radiators
- Windshield washer fluid tank

Hydraulic system

- Dedicated swing circuit
- Filter with integrated fine filters
- Hydraulic pressure measuring ports
- Hydraulic tank shut-off valve
- Magnetic rod
- Pressure accumulator for controlled lowering of equipment with engine turned off

Engine

- Air filter with automatic dust ejector
- Automatic engine idling / speed increase, controlled via joystick sensors
- Common-Rail injection system
- Exhaust gas after-treatment system – EGR
- Fixed geometry turbocharger
- Fuel fine filter
- Fuel pre-filter and water separator
- Fuel priming pump
- Intercooler
- Power Pack EU Stage IIIA (for select markets)
- Stepless adjustable engine speed

Cab

- 9" multifunction colour touchscreen
- Air conditioning, automatic, tri-zone, controlled via display
- Armrests adjustable in length, height and inclination
- Bottle holder
- Cab door sliding windows
- Cigarette lighter
- Coat hook
- Electric socket in cabin (12 V)
- Electric socket in cabin (24 V)
- Emergency hammer
- Engine oil level on touchscreen
- Footrest
- Fuel consumption on touchscreen
- Fuel level on touchscreen
- Impact resistant roof window
- Impact resistant two-piece windscreen
- Interior lighting
- Laminated right hand side window
- LiDAT Plus (Liebherr data transfer system)*
- Mobile phone storage net
- Modetronic
- Movement priority between swing and boom, adjustable via touchscreen
- Rain hood over front window opening
- Rearview mirror
- Rear view monitoring camera
- Rear view monitoring camera distance gauge
- Rear window emergency exit
- Roll-down sun blinds for windscreen and roof window
- Rubber floor mat, fixed on floor and removable
- Storage box
- Storage nets
- Storage spaces
- Tilttable console left
- Tinted windows
- Visco-elastic damping
- Windscreen wiper and washer
- Work mode selector

Equipment

- Anti-drift system boom cylinders
- Anti-drift system stick cylinder
- Boom cylinders regeneration
- Pipe fracture safety valve for stick cylinder
- Pipe fracture safety valves for boom cylinders
- Pivot points made of cast steel
- SAE split flanges on high pressure lines
- Stick bottom protection
- Stick cylinder regeneration

* optionally extendable after one year

Equipment standard / option

Undercarriage

Chain guide 3 pieces	●
Chain guide 4 pieces	+
Chain guide full length	+
Reinforced cover and base plate for undercarriage centre section	+
Reinforced cover plate for centre section (LC-V undercarriage)	+
Screws protection for sideframe (LC-V undercarriage)	+
Steps	●
Track pads double grouser 500 mm, chamfered	+
Track pads double grouser 600 mm, chamfered	●
Track pads double grouser 750 mm, chamfered	+
Travel drive gearbox protection	+
Undercarriage HD	+
Undercarriage LC-V	+
Undercarriage protection plate for drop-ball application	+

Uppercarriage

Air pre-filter with cyclonic dust trap	+
Boxing ring	+
Catwalks left and right	●
Catwalk wide with railing	+
Counterweight heavy 16.0 t	+
Counterweight standard 14.1 t	●
Filter for hydraulic hammer return flow	+
Fixed cab riser 800 mm	+
Front right rearview mirror	●
Headlight on uppercarriage, lateral right, LED+, 1 piece	+ ¹⁾
Headlights on uppercarriage, front, LED, 2 pieces, protections included	● ¹⁾
Headlights on uppercarriage, front, LED+, 2 pieces, protections included	+ ¹⁾
Headlights on uppercarriage, rear, LED+, 2 pieces	+ ¹⁾
Lighting for tank area	+ ¹⁾
Lighting for uppercarriage access	+ ¹⁾
Radiator fine mesh protection grid	+
Reversible fan drive	+
Skyview 360°	+
Special painting	+
Swing ring and lubrication hoses protection	+
Tank refilling pump fuel	+
Wiggins coupling for fuel	+

Hydraulic system

Bypass filter for hydraulic oil	+
Liebherr hydraulic oil	●
Liebherr hydraulic oil, adapted for extreme climate conditions	+
Liebherr hydraulic oil, biodegradable	+

Engine

Engine shut-down with overrun	+
Lighting for engine compartment	+ ¹⁾

● = Standard, + = Option

¹⁾ Equipment not individually available, but only as predefined packages

Non-exhaustive list, please contact us for further information.

Options and / or special equipment, supplied by vendors other than Liebherr, are only to be installed with the knowledge and approval of Liebherr in order to retain warranty.

Cab

2" seat belt with retractor	●
Acoustic travel alarm deactivatable	+
Auxiliary heater programmable	+
Bottom windscreen wiper	+
Coming / Leaving Home	+ ¹⁾
Cool box (12V)	+
Dark tinted windows	+
Electrically adjustable and heated outside rear-view mirrors	+
Emergency stop in cab	+
FGPS front guard tiltable	+
Fire extinguisher	+
FOPS top guard	+
Handrests elevated for joysticks	+
Headlights on cab, front, LED, 2 pieces	● ¹⁾
Headlights on cab, front, LED+, 2 pieces	+ ¹⁾
Headlights on cab roof, front, LED+, 2 pieces	+ ¹⁾
High pressure circuit switchable on pedals or mini-joystick	+
High pressure circuit with Tool Control (20 attachment adjustments on display)	+
Lighting for cabin access	+ ¹⁾
Luminosity control (LED+ headlights)	+ ¹⁾
Medium pressure circuit	+
Operator seat Comfort	●
Operator seat Premium	+
Overload warning system	+
Radio Comfort	+
Radio pre-installation	●
Right hand side view monitoring camera	+
Roof sun shield	+
Roof window wiper	+
Rotating beacon on cabin, LED, 1 piece	+
Shortcut buttons on joystick configurable	●
Sun visor	+

Equipment

Boom bottom protection	+
Boom cylinders rod protection	+
Bucket cylinder rod protection	+
Bucket Fill Assist	+
Floating boom	+
Headlights on boom, LED, 2 pieces, protections included	● ¹⁾
Headlights on boom, LED+, 2 pieces, protections included	+ ¹⁾
Mono boom 7.20 m	+
Preparation for ripper tooth	+
Quick coupler SWA 92 hydraulic	+
Shovel boom 4.60 m	+
Shovel stick 3.30 m	+
Special painting	+
Stick 2.90 m	+
Stick 3.30 m	+

Liebherr-France SAS

2 avenue Joseph Rey, B.P. 90287 • 68005 Colmar Cedex, France • Phone +33 389 213030
info.lfr@liebherr.com • www.liebherr.com • www.facebook.com/LiebherrConstruction