



125 USt



197 ft



217 ft



299 ft

Engineered for the future, built on experience

LTM 1110-5.2

Mobile crane
Grue mobile

LIEBHERR

Mobile and crawler cranes

Improved load capacity
Capacités de charge améliorées



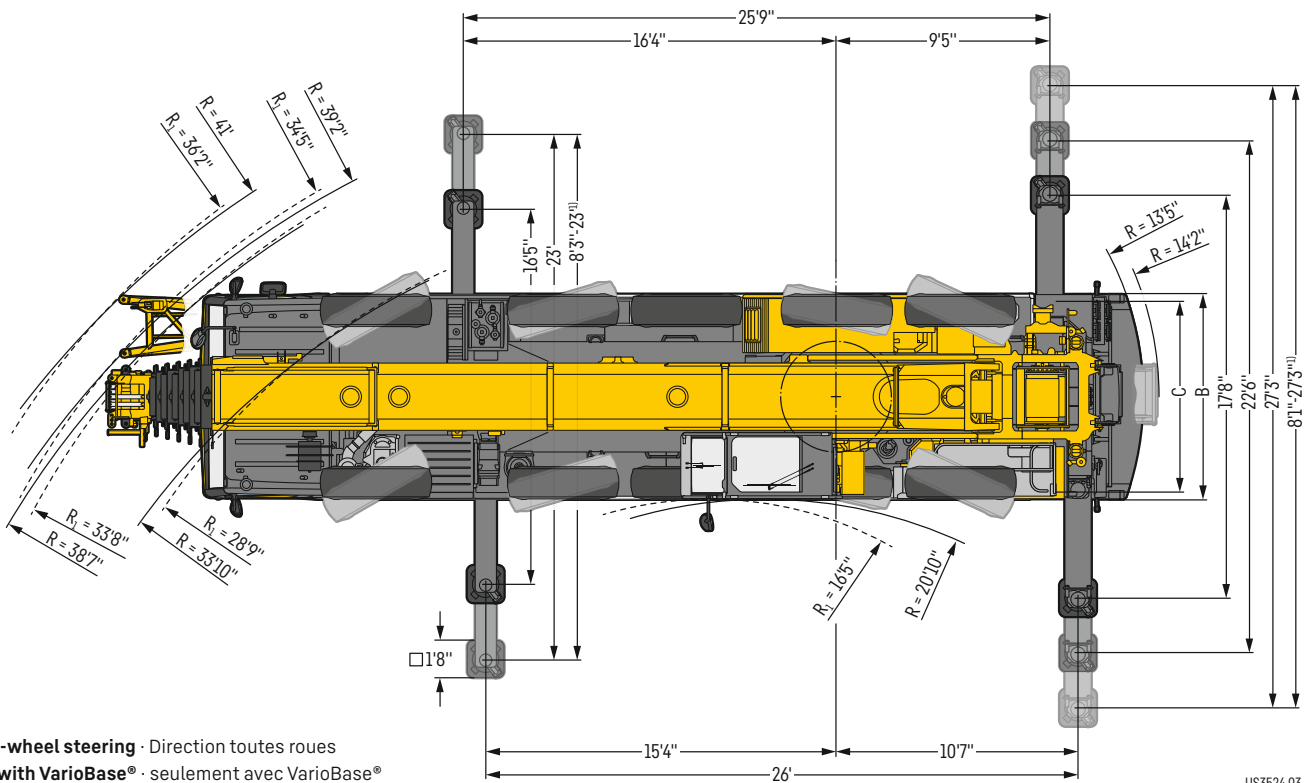
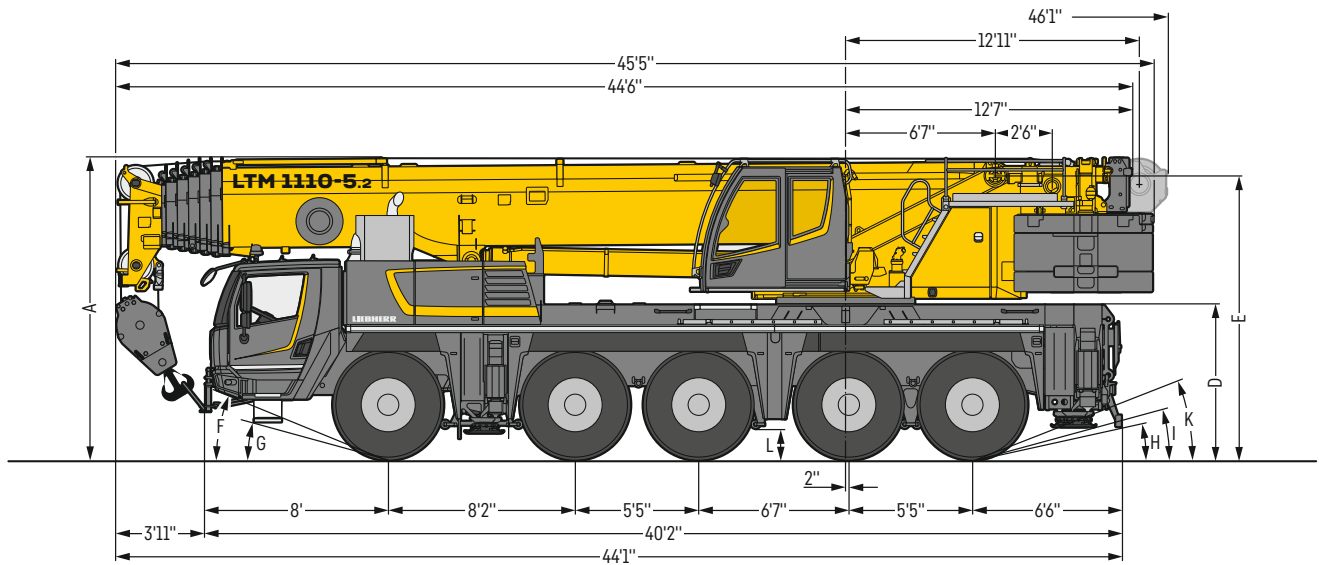
Technical data

Caractéristiques technique

Dimensions	
Encombrement	3
Mobile Crane	
Grue mobile	4-5
New products	
Nouveautés	6-8
ZF-TraXon DynamicPerform	9
Mechanically/hydraulically adjustable folding jib	
Pointe pliante réglable mécaniquement/hydrauliquement	10
VarioBallast Counterweight radius	
VarioBallast Rayon de contrepoids	12
Crane data	
Dates de la grue	13
Counterweight	
Contrepoids	14
On-road driving	
Déplacement sur route	15
Jobsite driving	
Déplacement sur chantier	15
Boom/jib combinations	
Configurations de flèche	16
T	17-21
TK/TNZK	22-25
TVK/TVNZK	26-33
TK	34-35
Equipment	
Équipement	11; 36-37
Description of symbols	
Explication des symboles	38
Remarks	
Remarques	39

Dimensions


Encombrement



R_1 = All-wheel steering · Direction toutes roues
¹⁾ only with VarioBase® · seulement avec VarioBase®

US3524.03

Dimensions · Encombrement

	A	A 5" *	B	C	D	E	F	G	H	I	K	L
445/95 R 25 (16.00 R 25)	13'1"	12'9"	9'	7'7"	6'9"	12'4"	23°	16°	12°	15°	21°	1'3"
525/80 R 25 (20.5 R 25)	13'1"	12'9"	9'4"	7'7"	6'9"	12'4"	23°	16°	12°	15°	21°	1'3"

* lowered · abaissé

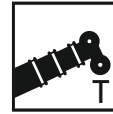
LTM 1110-5.2

LICCON3

The third generation LICCON control system features the same time-tested operation as previous generations and adds a fast data bus, significantly more storage space and greater computing power. LICCON3 cranes are prepared for telemetry and fleet management.

La troisième génération de la commande LICCON est basée sur la commande éprouvée et marque des points avec un bus de données plus rapide, un espace de stockage nettement plus grand et une puissance de calcul plus importante. Les grues LICCON3 sont préparées pour la télémétrie et la gestion de flotte.

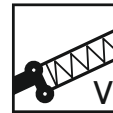




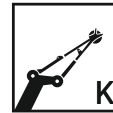
197 ft



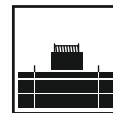
35 ft – 62 ft



2 x 23 ft



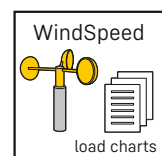
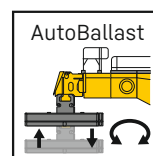
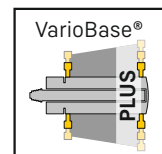
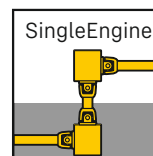
9 ft 6 in



63,900 lb



400 kW (544 h.p.)



New products

Nouveautés



Modern design featuring premium materials and timeless form.

Design moderne grâce à des matériaux de qualité supérieure et une ligne intemporelle.



Ergonomic features such as a side window roller blind and central locking system with remote control key (option).

Détails ergonomiques comme un store latéral et un système de fermeture centrale avec une radiocommande (option).



Spacious driver's cab with lots of useful trays and storage compartments.

Cabine du grutier avec de nombreuses tablettes et de nombreux compartiments de rangement utiles.

Multifunction steering wheel and multifunction display, for example, to control the cruise control function and display the tyre pressures (option).

Volant multifonctions et affichage multifonctions par exemple pour la commande de la fonction régulateur de vitesse et affichage de la pression des pneumatiques (option).



Simple, fast control of all main functions using key modules.

Commande simple et rapide de toutes les fonctions importantes avec des modules de touches.



Functional crane operator's cab with great visibility and useful storage trays, can be tilted 20° backwards.

Cabine de grue fonctionnelle avec un vaste champ de vision et des tablettes utiles, inclinables de 20° en arrière.



Intuitive control using simple key modules, interactive display and time-tested components.

Commande intuitive avec un module de touches simple, un affichage interactif et des composants éprouvés.



LED driving light (option) to improve visibility and durability.

Feux de route version LED (option) pour une meilleure visibilité et une meilleure longévité.



LED working light to perfectly illuminate the complete working area.

Éclairage de travail LED pour un éclairage optimal de la zone de travail complète.



ZF-TraXon

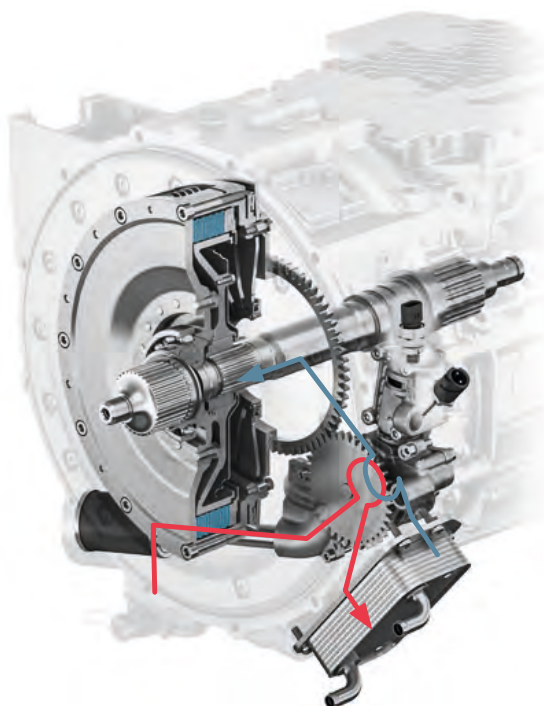
DynamicPerform



Automated shift gearbox, Oil-cooled multi-disk clutch,
Boîte de vitesses automatisée, Embrayage multidisque sous bain d'huile

Wet multidisks ensure durable starts and wear-free maneuvering

Le multidisque humide garantit un démarrage durable et un maniement sans usure



Cooling oil circuit prevents overheating and downtime

Le circuit d'huile de refroidissement protège contre surchauffes et temps d'arrêt



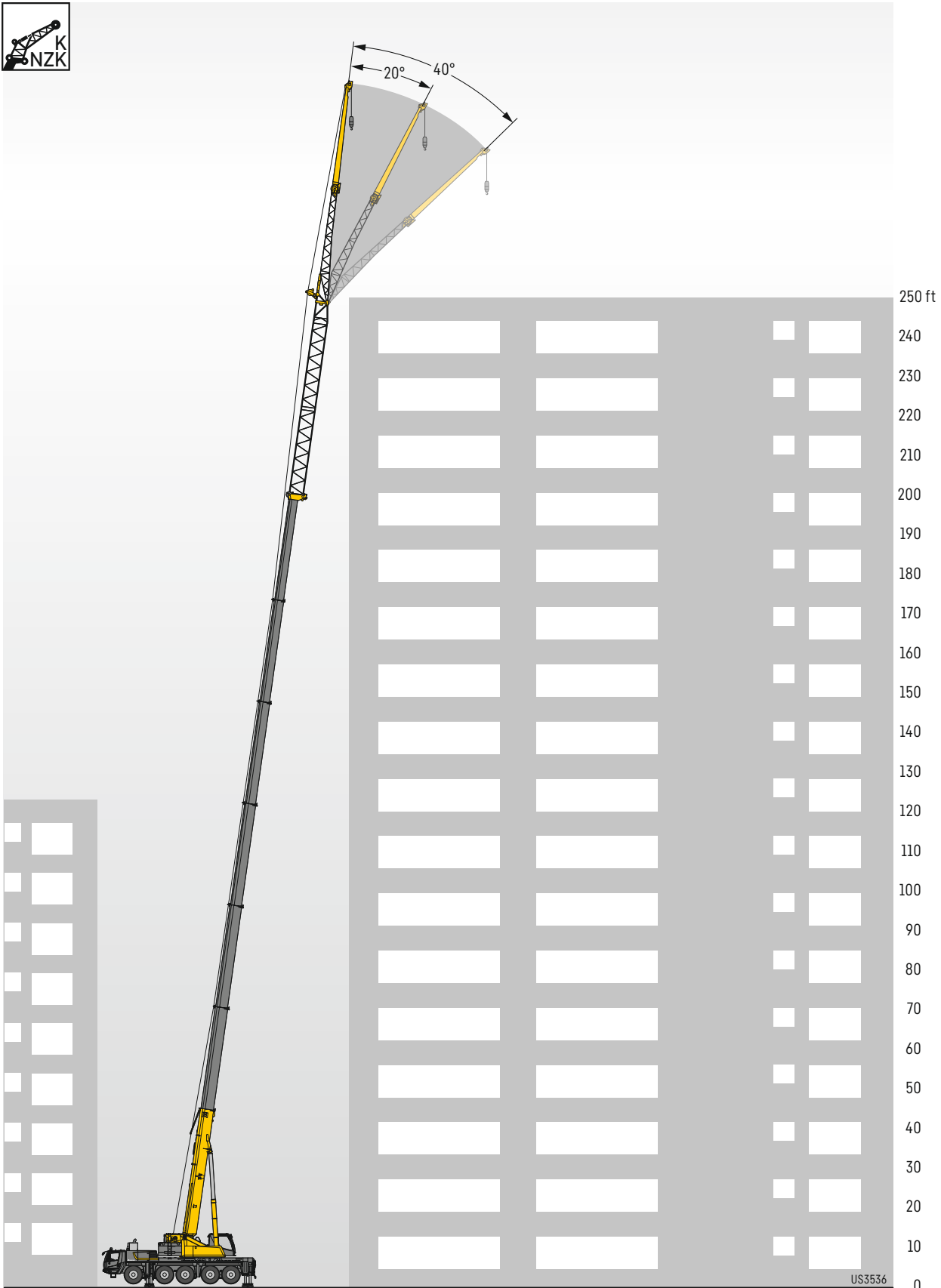
Hillstart Aid makes starting on gradients easier. Move off safely and easily without rolling backwards.

La fonction Hillstart-Aid facilite le démarrage en côte. Démarrage sûr et facile sans recul du véhicule.



Mechanically/hydraulically adjustable folding jib

Pointe pliante réglable mécaniquement/hydrauliquement



US3536

Practical work equipment

Équipement de travail pratique

- Mechanically or hydraulically adjustable double swing-away jib (option)
 - Greater working range and working over difficult edges
 - Interchangeable with many of the crane models
-
- Double fléchette pliante réglable mécaniquement et hydrauliquement (option)
 - Grande zone de travail et travail audessus d'arêtes gênantes
 - Échangeable avec de nombreux autres types de grue



Far away, yet very close

Loin et pourtant si proche

Camera system for telescopic boom and equipment including colour monitor (option)

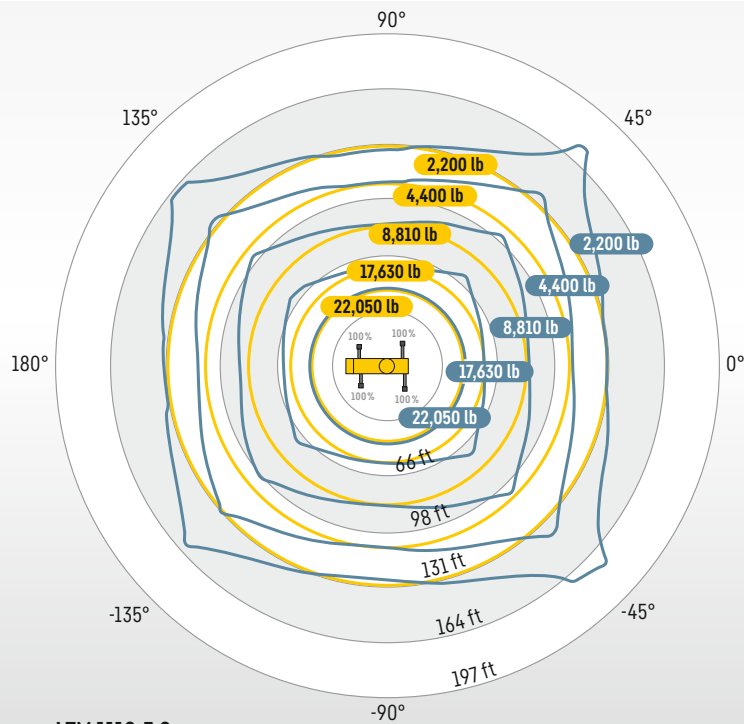
- Ideal for working over difficult edges
- Helpful zoom function

Système de caméra pour flèche télescopique et équipement avec écran couleur (option)

- Idéal pour travailler au-dessus d'arêtes gênantes
- Fonction zoom pratique

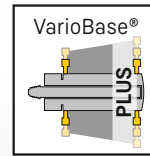


VarioBase® Plus



Greater safety in constricted working conditions
Plus de sécurité dans les zones de travail étroites

Higher lifting capacity and larger working range
Une capacité plus importante et une zone de travail plus large



LTM 1110-5.2



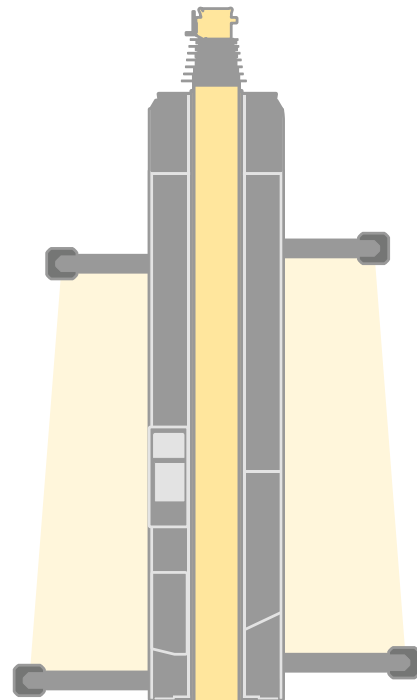
US3535

Greater safety

The maximum lifting capacities are calculated individually and precisely for every situation. This ensures safe working practice with any chosen support base.

Sécurité accrue

Les charges autorisées sont calculées individuellement et en fonction de la situation actuelle. Les opérations sont ainsi sécurisées avec chaque base de calage au choix.







S3527









Crane data

Dates de la grue

Hook block · Moufles à crochet

			
181,200 lb	7	12	2,750 lb
167,300 lb	5	11	2,100 / 1,650 lb
109,550 lb	3	7	1,550 / 1,100 lb
48,500 lb	1	3	990 lb
16,300 lb	-	1	550 lb

Crane carrier · Châssis porteur










	 min.	 max.	 %		
445/95 R 25 (16.00 R 25)	0.3	53	56,5		12 / R2
525/80 R 25 (20.5 R 25)	0.3	53	56,5		4 / R2

Theoretical gradeability · aptitude théorique en pente

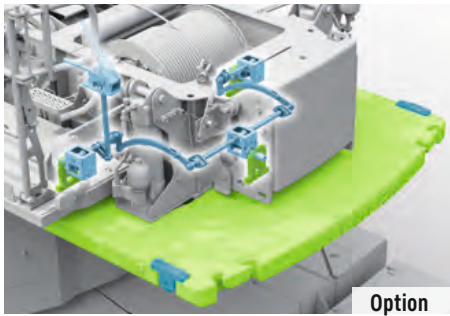
Max. supporting forces · Forces d'appui max.

		
Fmax	130,000 lb	162,000 lb

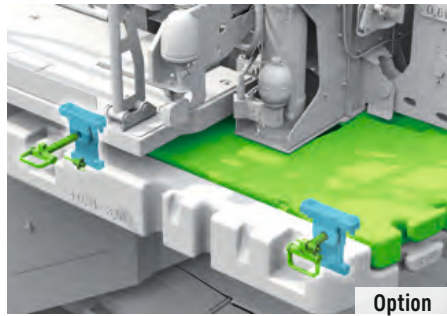
Crane superstructure · Partie tournante

			
 0 - 410 ft/min single line · au brin simple	19 mm	820 ft	16.635 lb
 0 - 410 ft/min single line · au brin simple	19 mm	820 ft	16.635 lb
 0 - 1.4 rpm			
 approx. 45 seconds to reach 83° boom angle env. 45 s jusqu'à 83°			
 approx. 430 seconds for boom extension from 38 ft - 197 ft env. 430 s pour passer de 38 ft - 197 ft			

Counterweight Contrepoids



Option



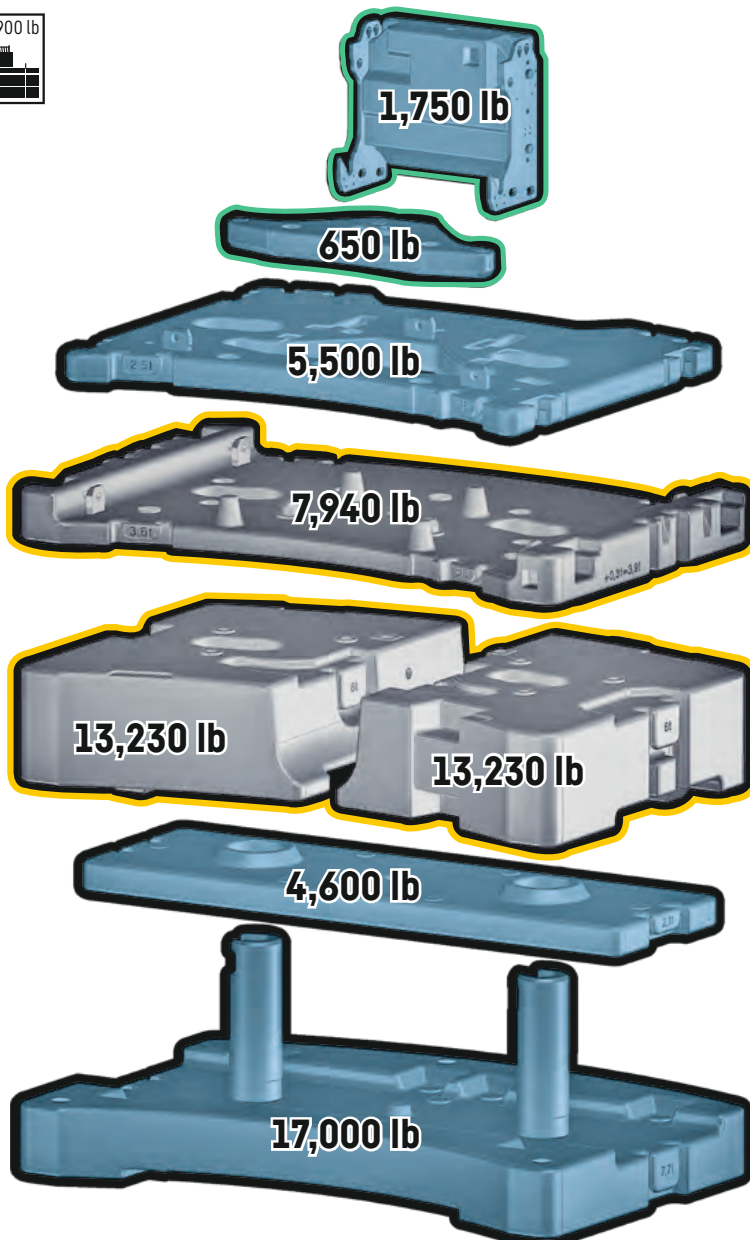
Option

Fast changing system for various driving situations

Système de changement rapide pour les configurations de conduite les plus diverses



63,900 lb



22,050 lb axle load
22,050 lb de charge par essieu

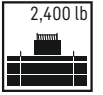
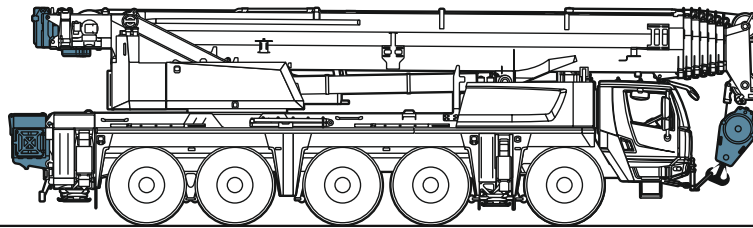
26,400 lb axle load
26,400 lb de charge par essieu

Technically transportable
Transport techniquement simplifié

Additional counterweight
Contrepoids additionnel

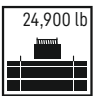
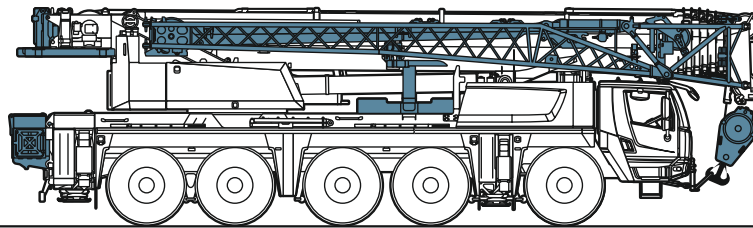
On-road driving

Déplacement sur route



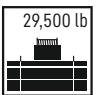
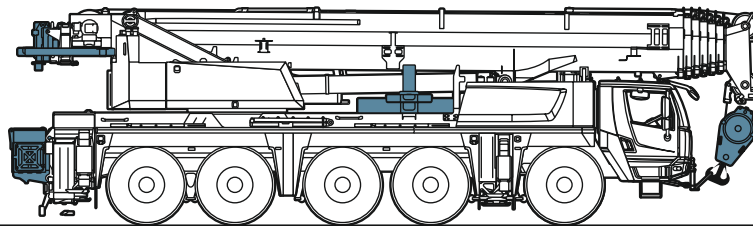
≤ 105,800 lb

≤ 22,050 lb ≤ 22,050 lb ≤ 22,050 lb
 ≤ 22,050 lb ≤ 22,050 lb



≤ 132,000 lb

≤ 26,450 lb ≤ 26,450 lb ≤ 26,450 lb
 ≤ 26,450 lb ≤ 26,450 lb

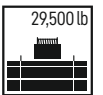
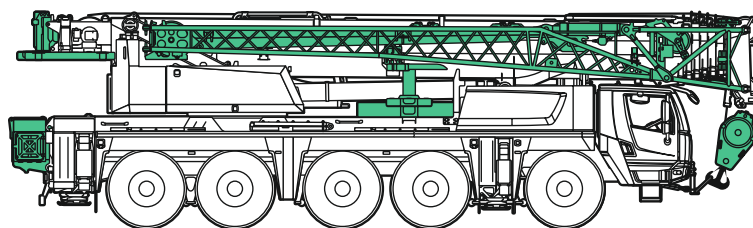


≤ 132,000 lb

≤ 26,450 lb ≤ 26,450 lb ≤ 26,450 lb
 ≤ 26,450 lb ≤ 26,450 lb

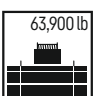
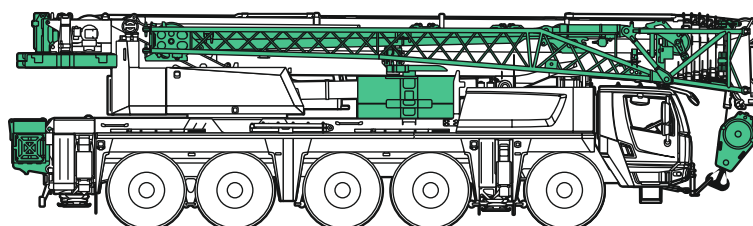
Jobsite driving

Déplacement sur chantier



≤ 138,900 lb

≤ 28,650 lb ≤ 28,650 lb ≤ 28,650 lb
 ≤ 28,650 lb ≤ 28,650 lb



≤ 176,500 lb

≤ 35,275 lb ≤ 35,275 lb ≤ 35,275 lb
 ≤ 35,275 lb ≤ 35,275 lb

US3542

Boom/jib combinations

Configurations de flèche

T Telescopic boom - Flèche télescopique

K/NZK Mechanically/hydraulically adjustable folding jib
Pointe pliante réglable mécaniquement/hydrauliquement

V Telescopic boom extension
Rallonge de flèche télescopique

K Assembly jib
Fléchette de montage

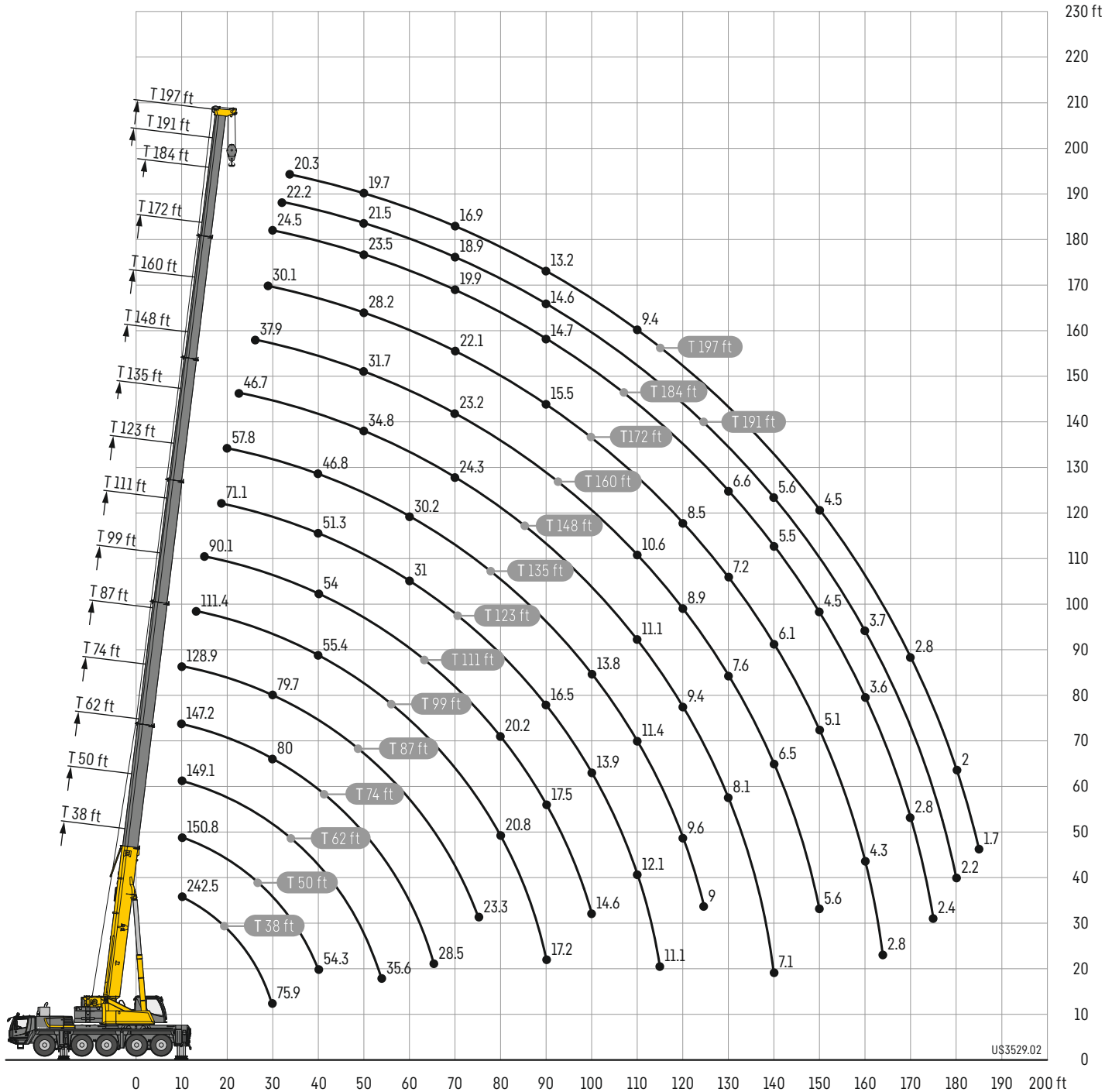


S3537

Lifting heights

Hauteurs de levage

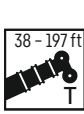
T



Lifting capacities

Forces de levage

T



Improved load capacity
Capacités de charge améliorées

	38 ft		50 ft	62 ft	74 ft	87 ft	99 ft	111 ft	123 ft	135 ft	148 ft	160 ft	172 ft	184 ft	191 ft	197 ft	
	*																
10	242.5	181.1	150.8	149.1	147.2	128.9											10
11	213.2	181.1	151.5	149.8	147.7	132.6											11
12	212	181.1	151.8	150.5	147.9	133											12
13	205.9	173.2	152.1	151.3	146.9	132.3	111.4										13
14	198.3	164.7	152.4	152.1	147.4	131.5	111.4										14
15	189.7	156.9	152.2	151.8	148	131.4	110.8	90.1									15
16	181.1	149.9	148.7	147.6	145.9	131.9	110.2	90.3									16
17	172.6	142.2	141.3	140.3	138.9	131.2	109.6	90	71.1								17
18	165.4	134.9	133.8	132.5	132	129.1	108.9	89.7	71.3								18
19	156.9	127.8	126.7	125.7	125.5	122.5	108.3	89.3	71.1								19
20	147.9	121.2	121.9	122.2	119.4	116.5	107.4	88.9	70.7	57.8							20
22	132.6	109	110.3	111.4	111.2	107.8	103.5	88.2	69.5	57.5							22
24	119.8	98.6	100.4	101.2	101.8	98.8	97.4	87.5	68.1	56.9	46.7						24
26	108.6	89.8	91.8	92.6	92.6	92.5	90.2	85.9	66.6	56.1	46.4	37.9					26
28	99.6	82.4	84.4	85.1	85.3	86.2	83.4	80.6	64.7	55.2	46	37.9	30.1				28
30	85.3	75.9	78.2	78.7	80	79.7	77.9	75	62.4	54.2	45.4	37.8	30.1	24.5			30
32			72.6	72.7	74.2	74.1	72.6	69.9	60	52.8	44.5	37.5	30.1	24.5	22.2		32
34			67.2	67.6	69	68.9	67.9	65.4	58.1	51.2	43.6	37.2	30.1	24.5	22.2	20.3	34
36			62.5	63.1	64.1	64.2	63.4	61.4	56	49.7	42.6	36.8	30	24.5	22.2	20.3	36
38			58.3	59.6	59.9	59.8	59.3	57.4	53.9	48.2	41.4	36.3	29.8	24.5	22.2	20.2	38
40			54.3	55.8	56.2	56	55.4	54	51.3	46.8	40.3	35.8	29.7	24.4	22.1	20.1	40
45				47.4	47.7	47.6	46.8	46.2	45.2	43.2	37.5	33.9	29.2	24	21.8	19.9	45
50				40.8	41.1	40.9	40.4	40	40.5	38.4	34.8	31.7	28.2	23.5	21.5	19.7	50
55				35.6	36.2	35.6	35.1	36	35.2	33.9	32.4	29.6	26.7	23	21	19.4	55
60					32	31.4	32.3	31.7	31	30.2	29.3	27.8	25.1	22.1	20.5	18.7	60
65					28.5	27.8	28.7	28	27.3	27.6	27.2	25.7	23.6	21	19.7	17.8	65
70						25.7	25.7	25	24.9	24.6	24.3	23.2	22.1	19.9	18.9	16.9	70
75						23.3	23	22.4	22.7	22.1	21.7	21.3	20.4	18.7	17.9	15.9	75
80							20.8	20.2	20.4	19.7	19.9	19.1	18.4	17.7	16.9	15	80
85							18.9	18.5	18.3	18	17.8	17	16.9	16.3	15.9	14	85
90								17.2	17.5	16.5	16.8	16	15.6	14.7	14.6	13.2	90
95									15.9	14.9	15.3	14.4	14.4	13.9	13.1	12.4	95
100									14.6	13.9	13.8	13	13	12.4	11.7	11.8	100
105										13.1	12.6	12.3	11.8	11.2	10.4	10.3	105
110										12.1	11.4	11.1	10.6	10.1	9.4	9.6	110
115										11.1	10.4	10.1	9.7	9.2	8.6	8.7	115
120											9.6	9.4	8.9	8.5	7.9	8	120
125											9	8.7	8.2	7.8	7.2	7.1	125
130												8.1	7.6	7.2	6.6	6.7	130
135												7.5	7	6.6	6	6.1	135
140													7.1	6.5	6.1	5.5	140
145														6	5.6	5	145
150														5.6	5.1	4.5	150
155															4.7	4	155
160																4.3	160
165																2.8	165
170																	170
175																	175
180																	180
185																	185

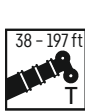
* ± 0° over rear · en arriere

t_305_001_09001_00_000 / maxt_305_001_02001_00_000

Lifting capacities

Forces de levage

T



Improved load capacity
Capacités de charge améliorées

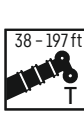
	38 ft	50 ft	62 ft	74 ft	87 ft	99 ft	111 ft	123 ft	135 ft	148 ft	160 ft	172 ft	184 ft	191 ft	197 ft	
10	153.2	150.8	149.1	147.2	128.9											10
11	153.2	151.5	149.8	147.7	132.6											11
12	153.2	151.8	150.5	147.9	133											12
13	153.2	152.1	151.3	146.9	132.3	111.4										13
14	153.2	151.8	152.1	145.9	131.5	111.4										14
15	146.8	143.9	143.2	140.9	131.4	110.8	90.1									15
16	137.5	136.1	133.9	132.4	126.5	110.2	90.3									16
17	128.1	126.9	125.7	123.8	119	109.6	90	71.1								17
18	120.4	120	121.2	118.8	113.2	106.5	89.7	71.3								18
19	113.4	114.7	115.5	113.5	107.5	100.8	89	71.1								19
20	106.9	108.2	109.6	106	101.2	94.9	88.2	70.7	57.8							20
22	95.4	98	98	94.9	89.3	84.2	79	69.5	57.5							22
24	85.3	87.9	86.9	85.1	79.8	75.4	70.8	66.1	56.9	46.7						24
26	75.7	78.8	79.5	76	72.1	68.2	63.9	61.2	56	46.4	37.9					26
28	67.9	70.8	71.7	68.9	65.8	61.7	58.1	57.2	53.8	46	37.9	30.1				28
30	61.2	64	65.3	62.9	59.8	56.6	55.1	52.6	49.8	45.4	37.8	30.1	24.5			30
32		58.3	59.6	57.6	55	52	51.3	48.4	46	43.6	37.5	30.1	24.5	22.2		32
34		52.5	54.5	53.2	50.8	49.7	47.5	45.1	43.8	41.2	37.2	30.1	24.5	22.2	20.3	34
36		47.6	49.5	49.7	47.1	46.6	44.3	42.2	40.9	39.5	36.6	30	24.5	22.2	20.3	36
38		43.4	45.2	46.2	43.7	43.6	41.3	40.3	38.2	36.6	34.6	29.8	24.5	22.2	20.2	38
40		39.7	41.5	42.6	41	40.7	38.8	38.1	35.8	35	33.1	29.7	24.4	22.1	20.1	40
45			34.2	35.1	35.9	34.8	33	32.5	31.9	30.5	28.9	27.5	24	21.8	19.9	45
50			28.6	30	30.2	30	28.5	28.3	27.9	26.5	25.5	24.8	23	21.5	19.7	50
55			24.4	25.7	25.8	25.5	25.9	24.7	24.8	23.4	22.8	21.6	20.4	20.2	19.3	55
60				22.2	22.2	22.5	22.3	22.2	21.6	21.1	20.2	19.1	17.8	17.8	17.4	60
65				19.3	19.3	19.7	19.4	19.3	18.7	18.4	17.7	16.9	15.7	15.7	15.2	65
70					16.8	17.3	17	16.9	16.3	16	15.4	14.8	13.8	13.8	13.5	70
75					14.8	15.1	14.9	14.7	14.2	13.9	13.3	12.7	11.8	11.9	11.7	75
80						13.4	13.1	13	12.4	12.1	11.6	11	10.2	10.2	10.1	80
85						11.9	11.6	11.4	10.9	10.6	10	9.5	8.8	9	8.7	85
90						10.6	10.2	10.1	9.6	9.3	8.9	8.5	7.8	7.8	7.7	90
95							9.2	9.1	8.6	8.4	7.9	7.5	6.8	6.9	6.7	95
100							8.4	8.2	7.7	7.5	7.1	6.6	6	6.1	5.9	100
105								7.5	7	6.7	6.3	5.8	5.2	5.3	5.1	105
110								6.8	6.3	6.1	5.6	5.1	4.5	4.6	4.5	110
115								6.2	5.7	5.4	5	4.5	3.9	4	3.8	115
120									5.1	4.9	4.4	4	3.3	3.5	3.2	120
125									4.7	4.4	3.9	3.5	2.8	2.9	2.7	125
130										3.9	3.4	2.9	2.2	2.4	2.1	130
135										3.5	2.9	2.4	1.6	1.8		135
140										3	2.4	1.9				140
145											2					145
150											1.6					150

maxt_305_001_02044_00_000

Lifting capacities

Forces de levage

T



Improved load capacity
Capacités de charge améliorées

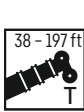
	38 ft	50 ft	62 ft	74 ft	87 ft	99 ft	111 ft	123 ft	135 ft	148 ft	160 ft	172 ft	184 ft	191 ft	197 ft	
10	153.2	150.8	149.1	147.2	128.9											10
11	153.2	151.5	149.8	147.7	132.6											11
12	153.2	151.8	150.5	147.9	133											12
13	153.2	152.1	151.3	146.9	132.3	111.4										13
14	152.1	151.7	150.1	145.4	131.5	111.4										14
15	144.6	142.2	140.7	138.4	131.4	110.8	90.1									15
16	135	133.6	131.6	130	121.8	109.8	90.3									16
17	125.8	124.6	123.4	121	115	107.3	90	71.1								17
18	118.3	118.8	120.1	115.8	110.1	102.6	89.7	71.3								18
19	111.3	112.7	113.8	108	102.5	95.7	87.1	71.1								19
20	104.8	106.3	107	102.6	95.9	89.8	83.3	70.7	57.8							20
22	93.1	95.8	93	89.8	84.5	79.5	74.6	68.9	57.5							22
24	82.2	85.1	83.8	80.5	75.5	71.2	66.8	63.3	56.9	46.7						24
26	72.9	76	75.1	71.8	68.1	64.3	60.2	59.1	54.7	46.4	37.9					26
28	65.3	68.2	67.7	65	62.1	58.2	57.1	54	50.6	45.9	37.9	30.1				28
30	58.1	61.4	61.6	59.4	56.4	53.8	52.5	49.5	47.4	44.6	37.8	30.1	24.5			30
32		55	56.2	54.9	51.8	50.7	48.3	45.5	44.5	41.9	37.5	30.1	24.5	22.2		32
34		49.4	51.4	50.6	47.8	47.5	44.8	43.5	41.3	39.8	36.5	30.1	24.5	22.2	20.3	34
36		44.7	46.6	46.8	44.3	44.1	41.7	40.9	38.4	37.1	34.9	30	24.5	22.2	20.3	36
38		40.7	42.5	43.5	42.1	41.1	38.8	38.1	36.1	35	33.3	29.8	24.5	22.2	20.2	38
40		37.2	39.1	40.1	39.9	38.3	36.4	35.7	34.5	33.1	31.6	29.1	24.4	22.1	20.1	40
45			32	33.1	33.7	32.7	30.9	30.5	30.1	28.5	27.1	26	23.9	21.8	19.9	45
50			26.8	28.2	28.3	28	28	26.7	26.3	24.9	24.3	23	21.6	21.2	19.7	50
55			22.7	24.1	24.1	24.2	24.2	24.1	23.1	22.4	21.2	20	18.7	18.6	18.2	55
60				20.6	20.6	21	20.8	20.7	20	19.6	18.7	17.5	16.2	16.2	15.9	60
65				17.9	17.8	18.3	18	17.9	17.2	16.9	16.3	15.4	14.2	14.2	13.7	65
70					15.5	15.9	15.7	15.5	14.9	14.6	14	13.3	12.3	12.3	12	70
75					13.4	13.8	13.6	13.4	12.9	12.6	12	11.3	10.5	10.6	10.4	75
80						12.1	11.8	11.7	11.1	10.8	10.3	9.8	9	9.1	9	80
85						10.6	10.3	10.2	9.7	9.5	9	8.5	7.8	8	7.7	85
90						9.5	9.2	9.1	8.6	8.4	7.9	7.5	6.8	6.9	6.7	90
95							8.3	8.2	7.7	7.5	7	6.6	5.9	6	5.8	95
100							7.5	7.4	6.9	6.7	6.2	5.8	5.1	5.2	5.1	100
105								6.7	6.2	6	5.5	5.1	4.4	4.5	4.3	105
110								6	5.5	5.3	4.9	4.4	3.7	3.9	3.6	110
115								5.5	5	4.7	4.3	3.8	3.1	3.2	2.9	115
120									4.5	4.2	3.8	3.3	2.5	2.6	2.3	120
125									4	3.7	3.2	2.7	1.8	2	1.6	125
130										3.2	2.7	2.2				130
135										2.8	2.2	1.6				135
140										2.4	1.8					140

maxt_305_001_02052_00_000

Lifting capacities

Forces de levage

T



Improved load capacity
Capacités de charge améliorées

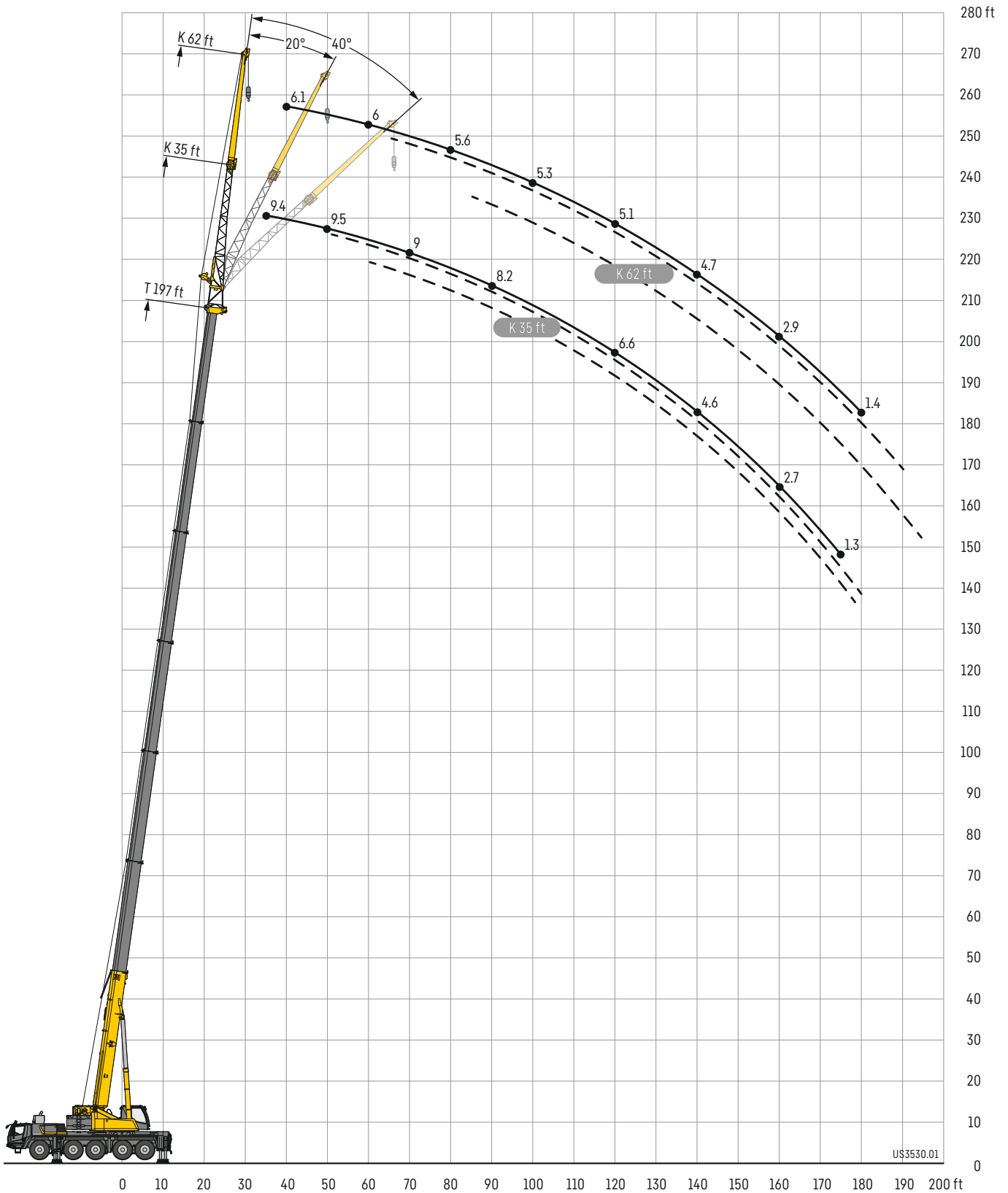
	38 ft	50 ft	62 ft	74 ft	87 ft	99 ft	111 ft	123 ft	135 ft	148 ft	160 ft	172 ft	184 ft	191 ft	197 ft	
10	153.2	150.8	149.1	147.2	128.9											10
11	153.2	151.5	149.8	147.7	132.6											11
12	153.2	151.8	150.5	142	132.4											12
13	151.7	151.3	140.9	131.5	119.9	111.1										13
14	142.4	140.5	125	118.9	114.3	104.1										14
15	132.1	125.1	120.7	114.2	104.1	95.3	86.5									15
16	123	118.3	109.9	104.1	95.3	87.2	80.6									16
17	113.5	106.7	100.9	94.4	87.5	80.6	74	68.1								17
18	104.2	98.1	93.2	87	80.7	74.7	70.8	65.8								18
19	94.8	90.8	86.4	80.6	74.9	69.4	67.4	62.1								19
20	86.6	83.2	79.7	75	69.8	66.1	62.7	58.1	53.9							20
22	73.6	71.8	68.8	66	61.2	59.8	56	53.1	49.5							22
24	63.3	62.4	60.6	59	56.3	53.4	49.9	48.1	44.9	41.9						24
26	53.6	55.2	54	52.3	50.6	48.2	44.9	43.7	41.1	38.9	35					26
28	46.2	49.2	48.4	47.6	46	43.4	41.7	39.8	38.2	35.7	33.1	29.3				28
30	40.1	43.7	43.8	43.4	41.6	39.4	38.5	37	35	33.2	30.6	27.9	24.5			30
32		38.7	39.4	39.4	37.8	36.4	35.1	33.7	31.9	30.5	28.4	26.5	24.5	22.2		32
34		34.5	35.7	35.8	34.5	33.9	32.2	31.1	29.2	28	26.3	24.7	22.7	21.8	20.3	34
36		30.7	32.4	32.6	31.5	31.1	29.7	28.6	26.8	25.8	24.3	22.7	21	20.6	19.6	36
38		27.3	29.4	29.9	28.8	28.7	27.4	26.4	24.8	23.6	22.3	20.9	19.1	19.2	18.6	38
40		24.5	26.5	27.6	26.6	26.4	25.5	24.5	22.9	21.9	20.7	19.3	17.7	17.5	17.1	40
45			20.5	21.9	22	22	21.1	20.3	19.2	18.3	17.1	16	14.5	14.5	14	45
50			16.2	17.6	17.6	18.2	17.7	17.2	16	15.4	14.3	13.2	11.8	11.9	11.6	50
55			13	14.3	14.3	14.9	14.6	14.4	13.6	13	12	11	9.8	9.8	9.4	55
60				11.6	11.7	12.2	11.9	11.8	11.1	10.8	10.1	9.1	8	8	7.7	60
65				9.7	9.7	10.1	9.9	9.8	9.2	9	8.5	7.6	6.5	6.6	6.2	65
70					8.3	8.6	8.5	8.4	7.9	7.6	7.1	6.3	5.2	5.3	5	70
75					7.1	7.5	7.3	7.1	6.7	6.5	5.9	5.1	4	4.1	3.8	75
80						6.5	6.3	6.1	5.7	5.5	4.8	4	2.8	3	2.6	80
85						5.6	5.4	5.3	4.8	4.6	3.9	3	1.7	1.9		85
90						5	4.7	4.5	4.1	3.8	3	2				90
95							4	3.9	3.4	3	2					95
100							3.4	3.3	2.7	2.2						100
105								2.6	1.9							105
110								2.1								110
115								1.7								115

maxt_305_001_02073_00_000

Lifting heights

Hauteurs de levage

TK/TNZK

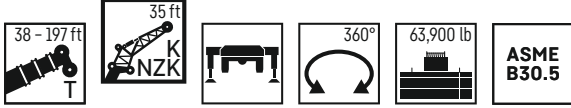


US3530.01

Lifting capacities

Forces de levage

TK/TNZK



	38 ft						111 ft			123 ft			135 ft			148 ft		
	K/NZK 35 ft																	
	0°	20°	40°	0°	20°	40°	0°	20°	40°	0°	20°	40°	0°	20°	40°			
10	32.5																	
11	32.5																	
12	32.5																	
13	32.5																	
14	32.5																	
15	32.5																	
16	32.5	32.5																
17	32.5	32.5																
18	32.5	32.5																
19	32.5	32.5																
20	32.5	32.5		32.5														
22	32.5	32.5		32.5														
24	32.5	32.3	23.7	32.5			32.5											
26	32.5	31.3	22.8	32.5			32.5			30.4								
28	32	29.9	22	32.5			32.5			30.4			24.5					
30	30.8	28.4	21.2	32.5	32.4		32.5			30.4			24.5					
32	29.5	26.8	20.6	32.5	32.1		32.5			30.3			24.5					
34	28.1	25.5	20	32.5	31.4		32.5	30.9		30.1			24.4					
36	26.6	24.4	19.4	32.5	30.6		32.5	30.4		29.9	27.5		24.4					
38	24.9	23.4	18.8	32.5	29.8	20.9	32.5	30		29.7	27.2		24.3					
40	23.4	22.5	18.5	32.4	29	20.6	32.5	29.6		29.5	26.9		24.1	22.6				
45	20	20.3	17.5	31.6	27.3	19.9	32.5	28.3	20.3	28.5	26.2	20	23.6	22.2				
50	17.5	18.6	16.4	30.6	25.8	19.2	31.3	26.8	19.6	27.3	25.5	19.4	23	21.9	19			
55	15.3	17.3	15.9	29.6	24.5	18.6	29.6	25.4	19	25.8	24.7	18.8	22.2	21.2	18.4			
60	13.6	16.2	15.7	28.2	23.3	18.1	27.9	24.2	18.5	24.1	23.6	18.3	21.1	20.2	18			
65	12.1	15.5		26.2	22.2	17.6	25.3	23.2	18	22.6	22.2	17.9	19.9	19.2	17.6			
70				23.8	21.2	17.2	22.7	22.2	17.6	20.8	20.8	17.4	18.7	18.2	17.2			
75				21.3	20.3	16.8	20.1	20.7	17.1	18.8	19.5	17.1	17.4	17.2	16.7			
80				18.8	19.5	16.4	17.7	19	16.7	17.3	17.8	16.8	16.2	16.3	16			
85				16.8	17.8	16.2	15.7	16.8	16.3	15.4	15.8	16.4	14.5	15.2	15.2			
90				15	15.9	15.9	14.3	14.8	15.5	13.7	14.6	14.8	13.3	13.9	14.4			
95				13.4	14.2	14.7	12.8	13.6	13.9	12.2	13.1	13.7	12.2	12.2	13.1			
100				12	12.7	13.1	11.4	12.1	12.7	11.4	11.6	12.2	10.9	11.4	11.5			
105				10.7	11.3	11.7	10.4	10.8	11.3	10.3	10.6	10.8	9.7	10.4	10.9			
110				9.7	10.1	10.4	9.8	9.7	10.1	9.3	9.8	10.1	9.1	9.4	9.8			
115				8.8	9.2	9.4	9	9.3	9.3	8.5	8.9	9.3	8.6	8.7	8.9			
120				8.1	8.4	8.6	8.3	8.7	8.9	8.1	8.2	8.5	7.9	8.3	8.3			
125				7.4	7.7	7.8	7.6	8	8.1	7.7	7.7	7.8	7.2	7.7	7.9			
130				6.8	7	7	7	7.3	7.4	7.3	7.4	7.4	6.7	7	7.2			
135				6.3	6.4			6.6	6.7	6.7	6.9	6.9	6.4	6.4	6.6			
140								6.4	6.3	6.5	6.5	6.7	6.2	6.1	6.2			
145								6.1	6.2	6	6	6.3	5.7	5.9	6			
150								6	6.1			5.6	5.8	5.6	5.7			
155												5.2	5.3	5.2	5.2			
160												4.9	4.9	4.9	4.9			
165													4.1	4.3	4.3			
170														3.7	3.9			
175															3.4			

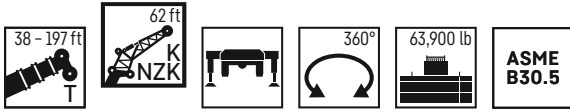
	160 ft			172 ft			184 ft			191 ft			197 ft		
	K/NZK 35 ft														
	0°	20°	40°	0°	20°	40°	0°	20°	40°	0°	20°	40°	0°	20°	40°
30	14.9														
32	19.8														
34	19.8			14.7											
36	19.8			14.7											
38	19.8			14.7											
40	19.4			14.7											
45	19.3	18.1		14.7	14.6										
50	18.9	17.7		14.5	14.3										
55	18.4	17.6	17.3	14.2	14.1	13.8									
60	17.8	17.1	16.7	13.9	13.7	13.7									
65	17	16.3	15.9	13.5	13.3	13.2									
70	16.2	15.5	15.2	13	12.7	12.6									
75	15.4	14.8	14.4	12.5	12.2	12.1									
80	14.6	14.1	13.8	12	11.6	11.5									
85	13.8	13.4	13.2	11.4	11.2	11									
90	12.7	12.8	12.6	10.9	10.7	10.6									
95	11.3	12.1	12	10.4	10.3	10.2									
100	10.3	11	11.4	10	9.8	9.8									
105	9.7	9.8	10.3	9.3	9.4	9.4									
110	9	9.3	9.3	8.5	9	9.1									
115	8.2	8.7	8.8	7.9	8.3	8.6									
120	7.4	7.9	8.3	7.6	7.5	7.9									
125	7.1	7.2	7.7	7.1	7.3	7.3									
130	6.9	6.9	7	6.4	6.9	7									
135	6.3	6.6	6.7	5.8	6.3	6.6									
140	5.8	6.1	6.3	5.3	5.7	6									
145	5.3	5.6	5.8	4.8	5.2	5.4									
150	4.8	5.1	5.3	4.4	4.7	4.9									
155	4.4	4.7	4.8	3.9	4.3	4.4									
160	4	4.3	4.4	3.5	3.8	4									
165	3.5	3.8	3.9	3	3.3	3.5									
170	3.1	3.4	3.4	2.6	2.9	3									
175	2.7	2.9	2.9	2.2	2.5	2.5									
180	2.4	2.5	2.4	1.9	2.1	2.1									
185	2.1	2.1		1.5	1.7	1.7									
190					1.3										

t_305_002_00001_00_000

Lifting capacities

Forces de levage

TK/TNZK



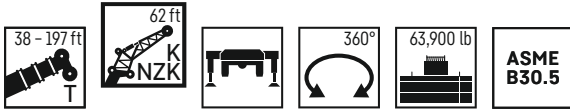
	38 ft			111 ft			123 ft			135 ft			148 ft			
	K/NZK 62 ft															
	0°	20°	40°	0°	20°	40°	0°	20°	40°	0°	20°	40°	0°	20°	40°	
11	20.6															11
12	20.4															12
13	20.2															13
14	19.9															14
15	19.6															15
16	19.3															16
17	19															17
18	18.7															18
19	18.4															19
20	18															20
22	17.3															22
24	16.7			15.1												24
26	16			15			14.7									26
28	15.5			15			14.6			13.4						28
30	14.8	11.3		14.8			14.5			13.3			11.9			30
32	14.2	11		14.6			14.4			13.3			11.8			32
34	13.6	10.6		14.4			14.3			13.2			11.8			34
36	13.1	10.3		14.2			14.1			13.1			11.7			36
38	12.6	10		14			13.9			13			11.7			38
40	12.1	9.8		13.8			13.8			12.8			11.6			40
45	11	9.3	8.1	13.2	9.9		13.3	10		12.5			11.4			45
50	10	8.8	7.8	12.7	9.6		12.8	9.7		12.2	9.6		11.2			50
55	9	8.4	7.5	12.1	9.3		12.3	9.4		11.8	9.3		11	9.1		55
60	8.3	8.1	7.3	11.6	9	7.6	11.8	9.2	7.6	11.4	9.1		10.7	8.9		60
65	7.6	7.8	7.1	11.1	8.8	7.5	11.3	8.9	7.5	11.1	8.8	7.5	10.4	8.7		65
70	7	7.5	7	10.5	8.6	7.3	10.9	8.7	7.4	10.7	8.6	7.4	10.2	8.5	7.3	70
75	6.5	7.3	6.9	10.1	8.4	7.2	10.4	8.5	7.3	10.3	8.4	7.3	9.9	8.3	7.2	75
80	6.1	7.1	6.9	9.7	8.1	7.1	10	8.3	7.2	10	8.2	7.2	9.7	8.1	7.1	80
85	5.7	7	6.9	9.5	8	7.1	9.7	8.1	7.1	9.6	8.1	7.1	9.4	8	7	85
90	5.3	6.9		9.2	7.8	7	9.4	7.9	7.1	9.4	7.9	7	9.2	7.8	7	90
95				8.9	7.6	6.9	9.1	7.8	7	9.1	7.8	7	9	7.7	6.9	95
100				8.6	7.5	6.9	8.9	7.6	6.9	8.9	7.6	6.9	8.7	7.6	6.9	100
105				8.3	7.4	6.8	8.6	7.5	6.9	8.7	7.5	6.8	8.5	7.5	6.8	105
110				8	7.3	6.8	8.4	7.4	6.8	8.5	7.4	6.8	8.3	7.3	6.8	110
115				7.6	7.2	6.8	8	7.3	6.8	8.1	7.3	6.8	8	7.3	6.8	115
120				7.3	7.1	6.8	7.7	7.2	6.8	7.8	7.2	6.7	7.7	7.2	6.7	120
125				7	7	6.8	7.3	7.1	6.8	7.4	7.1	6.7	7.2	7.1	6.7	125
130				6.8	6.9	6.8	7	7	6.8	7	7	6.7	6.5	7	6.7	130
135				6.5	6.9	6.8	6.7	6.9	6.8	6.5	6.8	6.7	6.3	6.7	6.7	135
140				6.3	6.9	6.8	6.4	6.5	6.8	5.9	6.6	6.7	6	6.2	6.6	140
145				5.9	6.3	6.5	6	6.3	6.4	5.7	6	6.4	5.5	5.8	6.1	145
150				5.5	5.8	5.9	5.6	6	6.2	5.4	5.5	5.9	5.1	5.6	5.7	150
155				5	5.3	5.3	5.1	5.5	5.7	5.2	5.3	5.4	4.7	5.2	5.5	155
160				4.6	4.8		4.7	5.1	5.2	4.8	5.1	5.2	4.5	4.8	5.1	160
165				4.2			4.5	4.6	4.7	4.5	4.8	4.9	4.3	4.4	4.6	165
170							4.3	4.4		4.3	4.4	4.5	4.1	4.2	4.3	170
175							4.1	4.2		4.2	4.2	4.4	3.8	4.1	4.2	175
180										3.8	4		3.4	3.8	3.9	180
185										3.5	3.6		3.1	3.4	3.4	185
190										3.1			2.8	3	3	190
195													2.5	2.7		195
200													2.2			200

t_305_002_01001_00_000

Lifting capacities

Forces de levage

TK/TNZK



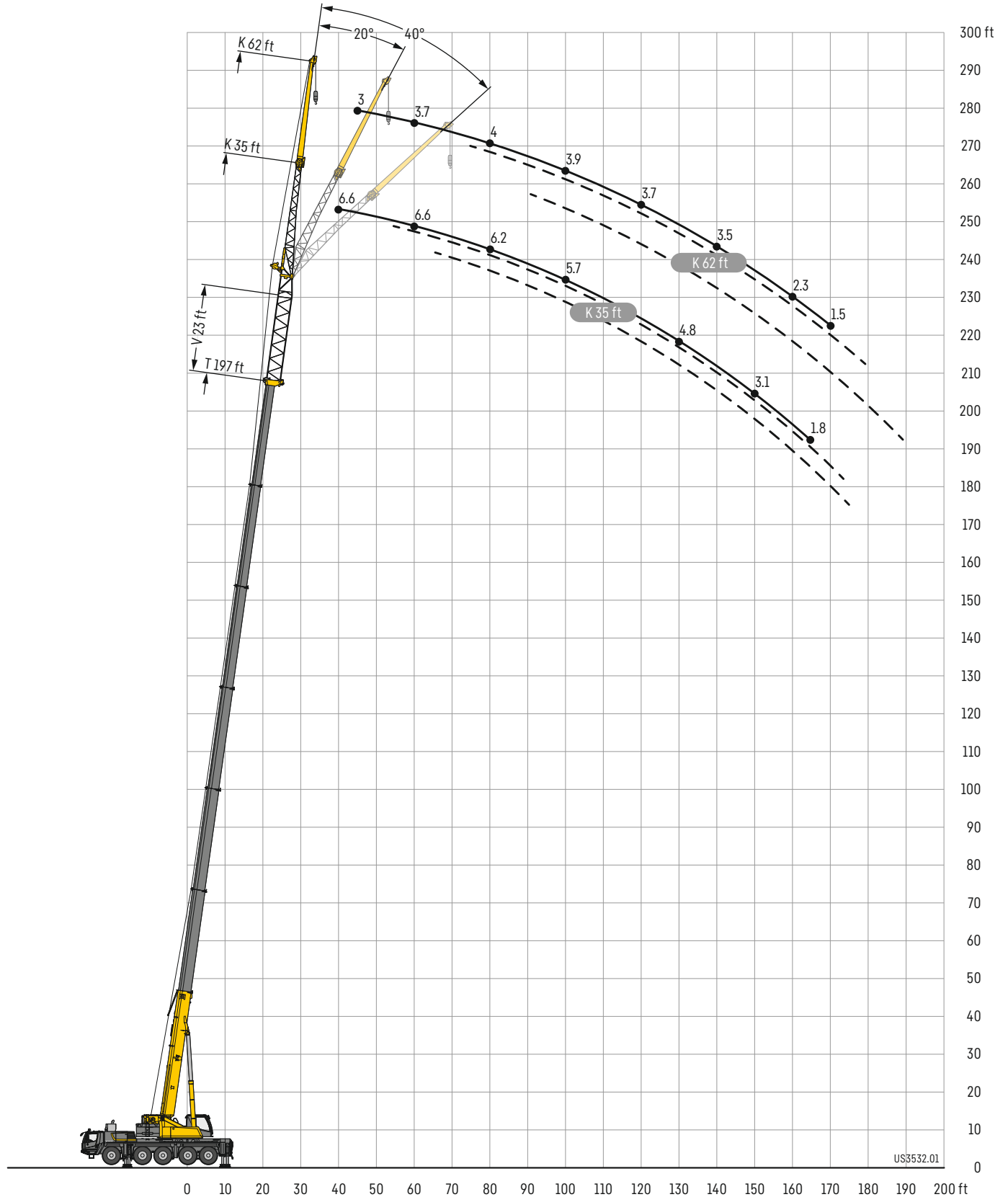
	160 ft			172 ft			184 ft			191 ft			197 ft			
	K / NZK 62 ft															
	0°	20°	40°	0°	20°	40°	0°	20°	40°	0°	20°	40°	0°	20°	40°	
32	10.4															32
34	10.4			9.1												34
36	10.3			9.1			7.7									36
38	10.3			9			7.7			6.9						38
40	10.2			9			7.7			6.9			6.1			40
45	10.2			8.9			7.7			6.8			6.1			45
50	10.1			8.9			7.4			6.7			6.1			50
55	9.9	8.8		8.7			7.2			6.5			6.1			55
60	9.8	8.6		8.6	8		7			6.4			6			60
65	9.7	8.4		8.4	8		6.9	6.6		6.3	5.9		5.8	5.5		65
70	9.5	8.3		8.3	7.9		6.7	6.5		6.1	5.9		5.7	5.5		70
75	9.4	8.1	7.1	8.2	7.8	7	6.7	6.5		6	5.9		5.6	5.5		75
80	9.2	8	7	8.1	7.7	6.9	6.6	6.5	6.5	6	5.9		5.6	5.4		80
85	9	7.8	7	8	7.6	6.8	6.5	6.5	6.5	5.9	5.8	5.9	5.5	5.4	5.5	85
90	8.9	7.7	6.9	7.9	7.5	6.8	6.4	6.4	6.4	5.8	5.8	5.9	5.4	5.4	5.5	90
95	8.7	7.6	6.9	7.8	7.4	6.8	6.4	6.4	6.2	5.8	5.8	5.9	5.3	5.4	5.5	95
100	8.5	7.5	6.8	7.7	7.3	6.7	6.3	6.3	6.1	5.7	5.7	5.9	5.3	5.4	5.5	100
105	8.4	7.4	6.8	7.6	7.2	6.7	6.3	6.1	5.9	5.7	5.7	5.7	5.2	5.4	5.5	105
110	8.2	7.3	6.7	7.4	7.1	6.7	6.2	6	5.8	5.6	5.7	5.6	5.2	5.4	5.5	110
115	7.8	7.2	6.7	7.3	7	6.6	6.1	5.8	5.7	5.6	5.6	5.5	5.2	5.3	5.4	115
120	7.2	7.1	6.7	7	6.9	6.6	6	5.7	5.5	5.5	5.5	5.4	5.1	5.2	5.3	120
125	6.9	7	6.7	6.6	6.7	6.5	5.9	5.6	5.4	5.4	5.4	5.3	5.1	5.2	5.2	125
130	6.6	6.7	6.7	6.1	6.6	6.5	5.7	5.4	5.3	5.3	5.2	5.2	5	5.1	5.1	130
135	6.1	6.4	6.6	5.6	6.3	6.4	5.4	5.3	5.2	5.3	5.1	5.1	4.9	5	5	135
140	5.5	6.2	6.3	5.4	5.8	6.2	5	5.2	5.1	5	5	5	4.7	4.9	4.9	140
145	5.2	5.8	6.1	5.1	5.2	5.8	4.6	5	5	4.6	4.9	4.8	4.3	4.8	4.8	145
150	5	5.2	5.7	4.7	4.9	5.3	4.1	4.8	4.9	4.1	4.8	4.8	3.8	4.6	4.7	150
155	4.7	4.8	5.2	4.3	4.8	4.8	3.7	4.4	4.8	3.7	4.4	4.6	3.3	4.2	4.6	155
160	4.3	4.6	4.7	3.9	4.5	4.7	3.3	4	4.4	3.2	4	4.5	2.9	3.8	4.3	160
165	4	4.5	4.6	3.5	4.1	4.4	2.8	3.5	4	2.8	3.6	4	2.6	3.3	3.9	165
170	3.6	4.1	4.3	3.1	3.7	4	2.4	3.1	3.6	2.4	3.2	3.6	2.2	2.9	3.5	170
175	3.2	3.7	3.9	2.7	3.3	3.6	2	2.7	3.1	2	2.8	3.2	1.8	2.5	3	175
180	2.8	3.3	3.5	2.3	2.9	3.2	1.6	2.3	2.7	1.7	2.4	2.8	1.4	2.2	2.6	180
185	2.5	2.9	3.1	2	2.5	2.8		1.9	2.3		2	2.4		1.8	2.2	185
190	2.1	2.5	2.6	1.6	2.1	2.3		1.5	1.8		1.6	1.9		1.4	1.8	190
195	1.9	2.2	2.2		1.8	1.9			1.4			1.5			1.4	195
200	1.6	1.8	1.8		1.4	1.5										200
205		1.5														205

t_305_002_01001_00_000

Lifting heights

Hauteurs de levage

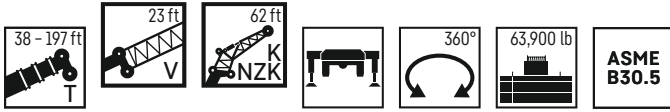
TVK/TVNZK



Lifting capacities

Forces de levage

TVK/TVNZK



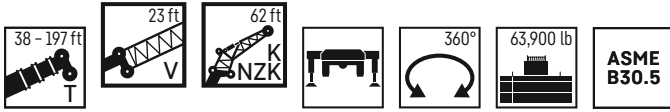
	38 ft + 23 ft			111 ft + 23 ft			123 ft + 23 ft			135 ft + 23 ft			148 ft + 23 ft			
	0°	20°	40°	0°	20°	40°	0°	20°	40°	0°	20°	40°	0°	20°	40°	
12	19															12
13	18.9															13
14	18.8															14
15	18.7															15
16	18.6															16
17	18.5															17
18	18.4															18
19	18.2															19
20	18															20
22	17.7															22
24	17.2			13.1												24
26	16.8			13												26
28	16.4			12.9			12.7									28
30	15.9			12.9			12.6			11.3						30
32	15.5			12.8			12.5			11.2						32
34	15	11		12.7			12.4			11.1			9.7			34
36	14.6	10.7		12.6			12.4			11.1			9.7			36
38	14.1	10.4		12.5			12.3			11			9.7			38
40	13.7	10.2		12.4			12.2			11			9.6			40
45	12.6	9.7		12.1			12			10.8			9.6			45
50	11.7	9.3	7.9	11.8	9.5		11.8	9.6		10.7			9.5			50
55	10.9	8.9	7.7	11.5	9.2		11.5	9.3		10.5	9.1		9.4			55
60	10.1	8.6	7.5	11.2	9		11.2	9.1		10.4	8.9		9.4	8.5		60
65	9.3	8.3	7.3	10.8	8.8	7.4	10.9	8.9		10.2	8.7		9.3	8.4		65
70	8.6	8	7.2	10.5	8.6	7.3	10.6	8.7	7.4	10	8.5	7.3	9.2	8.2		70
75	8.1	7.7	7.1	10.1	8.4	7.3	10.3	8.5	7.3	9.7	8.4	7.2	9	8.1	7.1	75
80	7.5	7.4	6.9	9.8	8.2	7.2	10	8.3	7.2	9.5	8.2	7.1	8.9	8	7	80
85	7	7	6.7	9.4	8	7.1	9.7	8.1	7.1	9.2	8.1	7.1	8.7	7.8	7	85
90	6.6	6.6	6.5	9.1	7.8	7	9.4	8	7	9	7.9	7	8.4	7.6	6.9	90
95	6.2	6.3	6.2	8.7	7.6	6.9	9	7.8	7	8.8	7.7	6.9	8.2	7.4	6.9	95
100	5.9	5.9	5.9	8.4	7.4	6.8	8.7	7.6	6.8	8.5	7.5	6.9	8	7.2	6.7	100
105	5.6	5.6	5.7	8.1	7.2	6.7	8.4	7.4	6.7	8.2	7.3	6.7	7.8	7.1	6.6	105
110	5.3	5.4		7.7	6.9	6.5	8.1	7.2	6.6	7.9	7.1	6.6	7.6	6.9	6.4	110
115	5.1			7.4	6.7	6.3	7.8	7	6.5	7.7	6.9	6.5	7.3	6.7	6.3	115
120				7.2	6.5	6.2	7.4	6.8	6.4	7.2	6.7	6.3	6.9	6.5	6.1	120
125				6.9	6.3	6.1	7	6.6	6.2	6.9	6.5	6.2	6.3	6.3	6	125
130				6.7	6.1	5.9	6.7	6.4	6.1	6.4	6.3	6	6.1	6.2	5.9	130
135				6.5	6	5.8	6.3	6.2	6	5.8	6	5.9	5.7	5.9	5.8	135
140				6.2	5.8	5.7	5.8	6	5.8	5.5	5.8	5.8	5.2	5.6	5.7	140
145				5.8	5.7	5.6	5.3	5.7	5.7	5.2	5.5	5.6	4.7	5.4	5.5	145
150				5.3	5.5	5.5	4.9	5.4	5.5	4.8	5.1	5.4	4.5	5	5.3	150
155				4.9	5.4	5.4	4.7	4.9	5.3	4.3	4.9	5	4.3	4.5	5	155
160				4.5	4.9	5.1	4.4	4.5	4.8	4	4.5	4.8	4	4.2	4.5	160
165				4	4.5	4.6	4.1	4.3	4.5	3.8	4.1	4.4	3.6	4	4.1	165
170				3.6	4	4.1	3.7	4.1	4.2	3.6	3.7	4	3.2	3.8	3.9	170
175				3.2	3.6	3.6	3.3	3.7	3.9	3.3	3.5	3.6	3	3.4	3.7	175
180				2.9	3.1		3	3.3	3.4	3	3.4	3.5	2.8	2.9	3.3	180
185				2.5	2.7		2.9	3	3	2.7	3.1	3.2	2.7	2.7	2.8	185
190							2.8	2.8	2.9	2.6	2.7	2.8	2.4	2.6	2.7	190
195							2.5	2.6		2.4	2.5	2.6	2.1	2.5	2.6	195
200							2.4			2.2	2.4	2.4	1.8	2.1	2.2	200
205										2	2.1		1.5	1.8	1.9	205
210										1.7	1.8			1.5	1.5	210

t_305_004_01001_00_000

Lifting capacities

Forces de levage

TVK/TVNZK



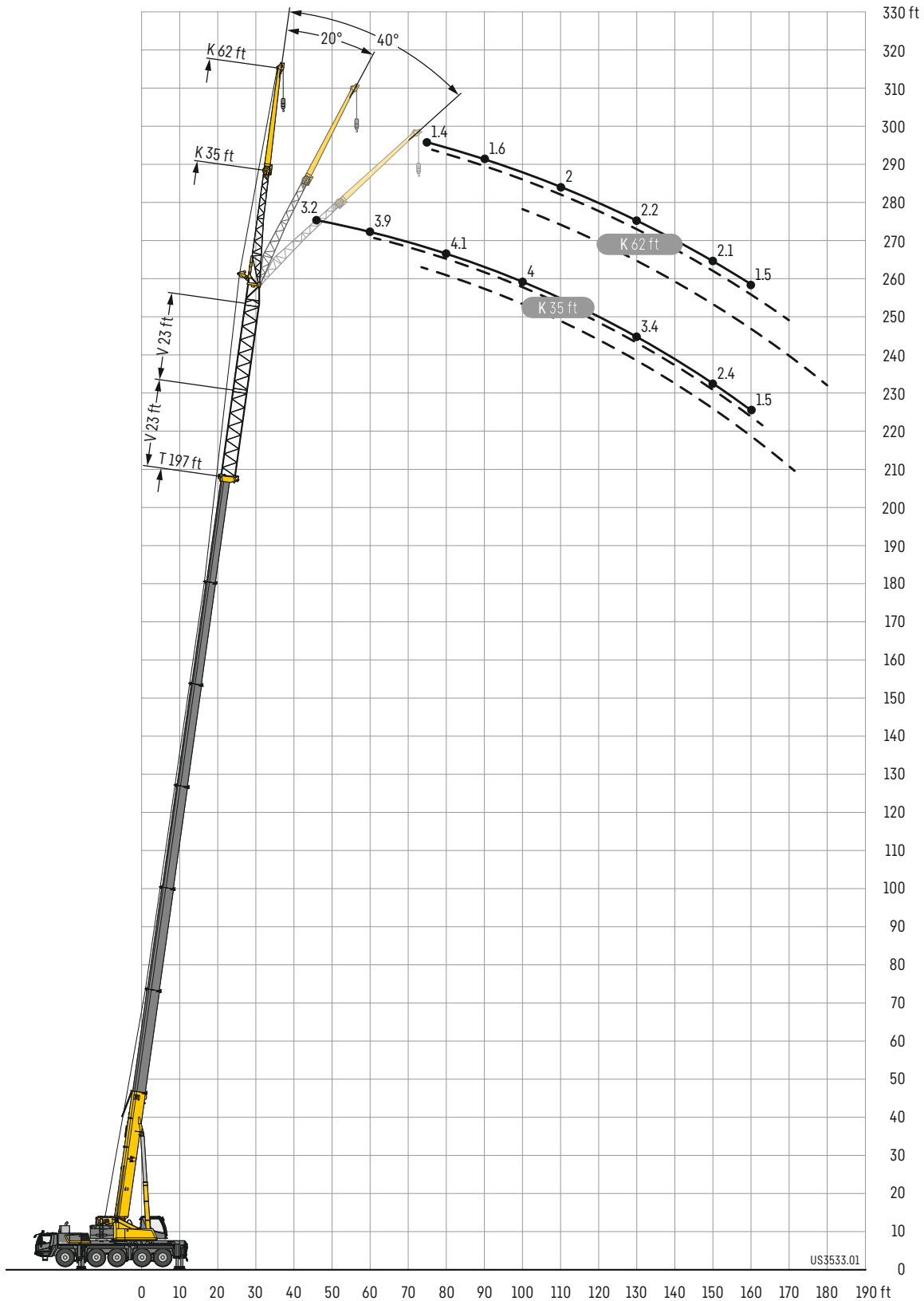
	160 ft + 23 ft			172 ft + 23 ft			184 ft + 23 ft			191 ft + 23 ft			197 ft + 23 ft				
	K / NZK 62 ft																
	0°	20°	40°	0°	20°	40°	0°	20°	40°	0°	20°	40°	0°	20°	40°		
36	8.5															36	
38	8.5															38	
40	8.5			7												40	
45	8.5			7			5.2				3.9			3		45	
50	8.4			7			5.3				4.2			3.3		50	
55	8.3			6.8			5.3				4.4			3.5		55	
60	8.1	7.4		6.6			5.3				4.5			3.7		60	
65	7.9	7.4		6.4	6		5.2				4.5			3.9		65	
70	7.7	7.4		6.2	6		5.1	4.8			4.5	4.3		3.9		70	
75	7.6	7.3		6.2	6		5	4.8			4.5	4.3		4	3.9	75	
80	7.4	7.2	6.7	6.1	5.9		4.9	4.8			4.4	4.3		4	3.9	80	
85	7.3	7.2	6.7	6	5.9	5.6	4.9	4.7	4.6		4.3	4.2		4	3.9	85	
90	7.2	7.1	6.7	5.9	5.8	5.7	4.8	4.7	4.6		4.3	4.2	4.1	4	3.9	3.8	90
95	7.1	7	6.6	5.9	5.8	5.6	4.8	4.6	4.5		4.2	4.2	4.1	3.9	3.9	3.8	95
100	7	6.9	6.4	5.8	5.8	5.6	4.7	4.6	4.5		4.2	4.2	4.1	3.9	3.8	3.8	100
105	6.9	6.7	6.3	5.7	5.8	5.6	4.6	4.5	4.5		4.1	4.1	4.1	3.8	3.8	3.8	105
110	6.8	6.5	6.2	5.7	5.7	5.6	4.5	4.4	4.4		4.1	4.1	4.1	3.8	3.8	3.9	110
115	6.7	6.4	6.1	5.6	5.6	5.6	4.4	4.3	4.3		4	4.1	4.1	3.7	3.8	3.8	115
120	6.5	6.3	6	5.5	5.4	5.6	4.3	4.2	4.1		3.9	4	4	3.7	3.8	3.8	120
125	6.2	6.1	5.8	5.4	5.3	5.5	4.2	4.1	4		3.9	3.9	3.9	3.7	3.8	3.7	125
130	5.7	6	5.7	5.2	5.2	5.4	4.1	4	3.9		3.8	3.8	3.8	3.6	3.7	3.7	130
135	5.1	5.8	5.6	5	5	5.2	4	3.8	3.8		3.7	3.7	3.7	3.6	3.6	3.6	135
140	4.9	5.5	5.5	4.6	4.9	5	3.8	3.7	3.7		3.7	3.6	3.6	3.5	3.5	3.5	140
145	4.7	4.9	5.4	4	4.8	4.9	3.7	3.6	3.6		3.6	3.5	3.5	3.4	3.4	3.5	145
150	4.3	4.6	5	3.6	4.4	4.7	3.4	3.5	3.5		3.4	3.4	3.4	3.1	3.4	3.4	150
155	3.9	4.4	4.6	3.5	4	4.5	3.1	3.4	3.4		3	3.3	3.3	2.7	3.3	3.3	155
160	3.5	4.2	4.4	3.4	3.5	4.2	2.7	3.3	3.3		2.6	3.2	3.2	2.3	3.1	3.2	160
165	3.2	3.7	4.1	3.1	3.2	3.7	2.3	3	3.2		2.2	3	3.1	1.9	2.8	3.1	165
170	3.1	3.3	3.8	2.7	3.1	3.3	1.9	2.7	3.1		1.8	2.6	3.1	1.5	2.4	3	170
175	2.8	3	3.3	2.3	2.9	3.1	1.4	2.3	2.8		1.4	2.2	2.8	2	2.6	2.6	175
180	2.5	2.9	2.9	1.9	2.6	3		1.9	2.4			1.9	2.4		1.6	2.2	180
185	2.1	2.6	2.8	1.6	2.2	2.6		1.5	2			1.5	2		1.8	1.8	185
190	1.8	2.3	2.6		1.9	2.2			1.6				1.6			1.4	190
195	1.5	2	2.2		1.5	1.8											195
200		1.6	1.8			1.4											200
205			1.5														205
210																	210

t_305_004_01001_00_000

Lifting heights

Hauteurs de levage

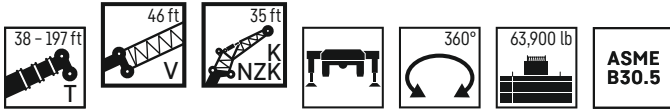
TVK/TVNZK



Lifting capacities

Forces de levage

TVK/TVNZK



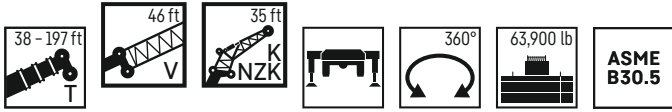
	38 ft + 46 ft			111 ft + 46 ft			123 ft + 46 ft			135 ft + 46 ft			148 ft + 46 ft			
	0°	20°	40°	0°	20°	40°	0°	20°	40°	0°	20°	40°	0°	20°	40°	
12	32.5															12
13	32.5															13
14	32.5															14
15	32.5															15
16	32.4															16
17	32.3															17
18	31.9															18
19	31.5															19
20	30.4															20
22	28.5															22
24	26.7	23.5														24
26	25	22.1		19.8												26
28	23.4	20.9		19.4			19									28
30	22.1	19.8		19.1			18.8			14.6						30
32	20.9	18.7	17.2	18.7			18.4			14.5						32
34	19.9	17.6	16.4	18.3			18.2			14.5			11.5			34
36	18.8	16.8	15.6	17.9			17.8			14.4			11.5			36
38	17.8	15.9	14.9	17.5	15.3		17.5			14.3			11.5			38
40	16.7	15.1	14.2	17.1	14.9		17.1	15.3		14.2			11.5			40
45	14.4	13.5	12.7	16	13.9		16.3	14.4		13.7	12.8		11.3			45
50	12.7	12	11.5	14.8	13	11.8	15.3	13.4	12.2	13.2	12.2		11	10.5		50
55	11.4	10.6	10.4	13.8	12.1	11.1	14.4	12.7	11.5	12.6	11.6	10.7	10.7	10.1		55
60	10.1	9.7	9.4	13	11.4	10.5	13.4	11.9	10.9	12.1	11	10.2	10.3	9.8	9.3	60
65	9.2	8.9	8.7	12.2	10.7	9.9	12.7	11.2	10.3	11.5	10.4	9.7	10	9.4	9	65
70	8.5	8.2	8.1	11.3	10.2	9.5	12	10.5	9.8	10.9	9.9	9.3	9.6	9.1	8.7	70
75	7.8	7.6	7.5	10.6	9.7	9.1	11.3	10.1	9.4	10.5	9.5	9	9.3	8.8	8.4	75
80	7.3	7.1	7	9.8	9.2	8.7	10.5	9.6	9	10	9.1	8.6	9.1	8.5	8.1	80
85	6.7	6.6	6.6	9.4	8.8	8.3	9.9	9.2	8.7	9.6	8.8	8.3	8.8	8.2	7.9	85
90	6.3	6.2	6.2	8.9	8.3	8	9.3	8.8	8.3	9.1	8.5	8.1	8.4	7.9	7.6	90
95	5.8	5.8	5.8	8.5	8	7.6	8.9	8.4	8	8.7	8.1	7.8	8.1	7.7	7.4	95
100	5.5	5.5	5.5	8.1	7.6	7.4	8.5	8	7.7	8.3	7.8	7.5	7.8	7.4	7.2	100
105	5.2	5.1	5.2	7.8	7.4	7.1	8.2	7.7	7.4	8	7.5	7.3	7.6	7.2	7	105
110	4.9	4.9		7.4	7.1	6.8	7.8	7.4	7.1	7.7	7.2	7	7.3	6.9	6.7	110
115				7.1	6.8	6.6	7.4	7.1	6.9	7.2	7	6.8	7.1	6.7	6.5	115
120				6.8	6.5	6.4	7	6.9	6.7	6.9	6.8	6.6	6.4	6.5	6.3	120
125				6.5	6.3	6.2	6.6	6.5	6.5	6.4	6.4	6.4	5.9	6.2	6.2	125
130				6.3	6.1	5.9	6.3	6.2	6.2	5.7	6.1	6.1	5.6	5.7	6	130
135				6	5.9	5.8	5.7	5.9	5.9	5.3	5.7	5.8	5.2	5.5	5.5	135
140				5.5	5.7	5.6	5.2	5.5	5.6	5	5.1	5.4	4.6	5.1	5.3	140
145				5	5.4	5.5	4.7	5.1	5.3	4.6	4.9	4.9	4.2	4.6	4.8	145
150				4.6	5	5.1	4.4	4.6	4.8	4.2	4.5	4.7	4	4.1	4.4	150
155				4.1	4.5	4.6	4.2	4.3	4.3	3.7	4.1	4.3	3.7	3.9	4	155
160				3.6	4	4.1	3.8	4.1	4.1	3.5	3.6	3.8	3.3	3.7	3.8	160
165				3.2	3.5	3.6	3.4	3.7	3.8	3.3	3.4	3.5	2.8	3.2	3.5	165
170				2.8	3.1	3.1	2.9	3.2	3.3	3	3.2	3.3	2.6	2.8	3	170
175				2.4	2.6	2.6	2.7	2.8	2.9	2.6	2.9	3	2.5	2.5	2.5	175
180				2.1	2.2		2.6	2.6	2.6	2.3	2.5	2.6	2.3	2.4	2.4	180
185							2.4	2.5	2.5	2.2	2.3	2.3	2	2.3	2.3	185
190							2.1	2.2	2.1	2	2.1	2.2	1.7	1.9	2	190
195							2	2		1.8	1.9	1.9	1.4	1.6	1.6	195
200										1.5	1.6	1.6				200

t.305.004_02001.00.000

Lifting capacities

Forces de levage

TVK/TVNZK



	160 ft + 46 ft			172 ft + 46 ft			184 ft + 46 ft			191 ft + 46 ft			197 ft + 46 ft			
	0°	20°	40°	0°	20°	40°	0°	20°	40°	0°	20°	40°	0°	20°	40°	
36	9.1															36
38	9.1															38
40	9.1			7.3												40
45	9.1			7.3			5.6			4.3			3.2			45
50	9.1	9		7.3			5.6			4.6			3.4			50
55	9.1	8.8		7.3	7.3		5.6			4.7			3.7			55
60	8.9	8.6	8.4	7.2	7.3		5.5	5.5		4.7	5		3.9	4.2		60
65	8.7	8.4	8.2	7.2	7.2	6.8	5.4	5.4		4.8	4.9		4	4.3		65
70	8.6	8.2	8	7.1	7	6.8	5.3	5.3	5.3	4.8	4.9	4.8	4.1	4.3		70
75	8.4	8	7.7	6.9	6.9	6.7	5.2	5.2	5.2	4.7	4.8	4.7	4.1	4.4	4.3	75
80	8.1	7.8	7.5	6.8	6.8	6.7	5.1	5.1	5.1	4.7	4.6	4.6	4.1	4.4	4.3	80
85	7.9	7.5	7.3	6.7	6.6	6.5	5	4.9	5	4.6	4.6	4.6	4.2	4.3	4.3	85
90	7.7	7.3	7.1	6.5	6.4	6.4	4.9	4.8	4.8	4.4	4.5	4.5	4.1	4.2	4.2	90
95	7.4	7.1	6.9	6.3	6.2	6.2	4.7	4.6	4.6	4.3	4.3	4.4	4.1	4.1	4.1	95
100	7.1	6.9	6.7	6.1	6.1	6.1	4.6	4.5	4.5	4.2	4.2	4.3	4	4	4.1	100
105	6.9	6.7	6.6	5.9	5.9	5.9	4.4	4.3	4.3	4.1	4.1	4.1	3.9	3.9	4	105
110	6.6	6.5	6.4	5.7	5.7	5.7	4.3	4.2	4.2	4	4	4	3.8	3.8	3.9	110
115	6.4	6.3	6.2	5.5	5.5	5.5	4.1	4.1	4	3.9	3.9	3.9	3.7	3.7	3.7	115
120	6.1	6.1	6.1	5.3	5.3	5.3	4	3.9	3.9	3.7	3.7	3.8	3.6	3.6	3.6	120
125	5.6	5.9	5.9	5.1	5.1	5.1	3.8	3.8	3.8	3.6	3.6	3.7	3.5	3.5	3.5	125
130	5	5.6	5.7	4.8	4.9	4.9	3.7	3.6	3.6	3.5	3.5	3.5	3.4	3.4	3.4	130
135	4.7	5.1	5.4	4.4	4.7	4.8	3.5	3.5	3.5	3.4	3.4	3.4	3.3	3.3	3.3	135
140	4.5	4.6	4.9	3.8	4.3	4.6	3.4	3.4	3.4	3.3	3.3	3.3	3.2	3.2	3.2	140
145	4.2	4.4	4.4	3.3	3.9	4.3	3.2	3.3	3.3	3.1	3.2	3.2	2.8	3.1	3.1	145
150	3.7	4.1	4.2	3.2	3.4	3.8	2.8	3.2	3.2	2.7	3	3.1	2.4	3	3	150
155	3.2	3.7	4	3.1	3.1	3.3	2.4	2.8	3.1	2.3	2.8	2.9	2	2.5	2.9	155
160	2.9	3.2	3.5	2.8	2.9	3	1.9	2.4	2.7	1.9	2.4	2.7	1.5	2.1	2.5	160
165	2.8	2.8	3	2.4	2.8	2.9	1.4	2	2.4	1.3	2	2.3		1.7	2	165
170	2.5	2.7	2.7	1.9	2.4	2.7		1.5	1.9		1.5	1.9			1.6	170
175	2.1	2.5	2.6	1.5	2	2.2			1.4			1.4				175
180	1.7	2.1	2.3		1.6	1.8										180
185	1.3	1.7	1.9			1.4										185
190		1.3	1.5													190

t_305_004_02001_00_000

Lifting capacities

Forces de levage

TVK/TVNZK

38 - 197 ft

46 ft

62 ft

63,900 lb

ASME B30.5

	38 ft + 46 ft			111 ft + 46 ft			123 ft + 46 ft			135 ft + 46 ft			148 ft + 46 ft			
	K/NZK 62 ft															
	0°	20°	40°	0°	20°	40°	0°	20°	40°	0°	20°	40°	0°	20°	40°	
15	15.7															15
16	15.6															16
17	15.5															17
18	15.5															18
19	15.4															19
20	15.3															20
22	15.2															22
24	15.1															24
26	15															26
28	14.9															28
30	14.7				10.7											30
32	14.5				10.6			10.4								32
34	14.2				10.5			10.4				9.2				34
36	14				10.5			10.4				9.2				36
38	13.7	10.6			10.4			10.3				9.2				38
40	13.3	10.4			10.4			10.2				9.2		7.9		40
45	12	9.9			10.2			10.1				9.1		7.9		45
50	10.8	9.6			10			10				9		7.8		50
55	9.7	9.1	7.8		9.6	8.6		9.7	8.8			8.8		7.7		55
60	8.8	8.4	7.6		9.2	8.2		9.4	8.5			8.5	7.9	7.5		60
65	8.1	7.8	7.4		8.8	7.9		9	8.1			8.3	7.6	7.3	6.7	65
70	7.5	7.2	7		8.4	7.5	6.9		8.6	7.7		8	7.3	7.2	6.7	70
75	6.9	6.7	6.6		8	7.2	6.7		8.3	7.4	6.8	7.7	7	6.5	7	75
80	6.4	6.2	6.2		7.6	6.9	6.4		7.9	7.1	6.6	7.4	6.8	6.3	6.8	80
85	5.9	5.8	5.8		7.3	6.6	6.1		7.6	6.8	6.3	7.2	6.5	6.1	6.6	85
90	5.5	5.5	5.4		6.9	6.3	5.9		7.3	6.5	6.1	6.9	6.3	5.9	6.4	90
95	5.2	5.1	5.1		6.6	6	5.7		6.9	6.3	5.9	6.6	6	5.7	6.2	95
100	4.8	4.8	4.8		6.3	5.8	5.5		6.6	6	5.6	6.4	5.8	5.5	6	100
105	4.5	4.5	4.5		6	5.6	5.3		6.3	5.8	5.4	6.1	5.6	5.3	5.7	105
110	4.3	4.2	4.3		5.8	5.3	5.1		6	5.5	5.3	5.8	5.4	5.1	5.5	110
115	4	4	4		5.5	5.1	4.9		5.8	5.3	5.1	5.6	5.2	5	5.3	115
120	3.8	3.7	3.8		5.3	4.9	4.7		5.6	5.1	4.9	5.4	5	4.8	5.1	120
125	3.5	3.5	3.6		5.1	4.7	4.6		5.3	4.9	4.7	5.2	4.8	4.7	5	125
130	3.3	3.3	3.4		4.8	4.6	4.4		5.1	4.8	4.6	5	4.7	4.5	4.8	130
135	3.2	3.2			4.6	4.4	4.3		4.9	4.6	4.4	4.9	4.5	4.4	4.6	135
140					4.5	4.2	4.1		4.7	4.4	4.3	4.6	4.4	4.2	4.3	140
145					4.3	4.1	4		4.5	4.3	4.2	4.3	4.2	4.1	4.2	145
150					4.1	3.9	3.9		4.2	4.1	4	4	4.1	4	3.9	150
155					4	3.8	3.8		4	4	3.9	3.8	3.9	3.9	3.4	155
160					3.8	3.7	3.6		3.7	3.8	3.8	3.5	3.8	3.8	3.2	160
165					3.7	3.6	3.5		3.4	3.6	3.6	3.2	3.5	3.6	3	165
170					3.4	3.5	3.4		3.2	3.4	3.5	2.8	3.4	3.4	2.8	170
175					3	3.4	3.4		3	3.1	3.3	2.6	3	3.3	3	175
180					2.6	3.1	3.3		2.6	3	3.1	2.5	2.6	3	2.4	180
185					2.3	2.7	2.8		2.3	2.7	2.9	2.3	2.4	2.6	1.7	185
190					1.9	2.3	2.4		2	2.4	2.6	1.9	2.3	2.4	1.6	190
195					1.6	1.9	1.9		1.8	2	2.2	1.6	2.1	2.2	1.5	195
200					1.3	1.6	1.5		1.7	1.8	1.8	1.4	1.8	2	1.5	200
205									1.5	1.7	1.7		1.5	1.6		205
210										1.5	1.5					210

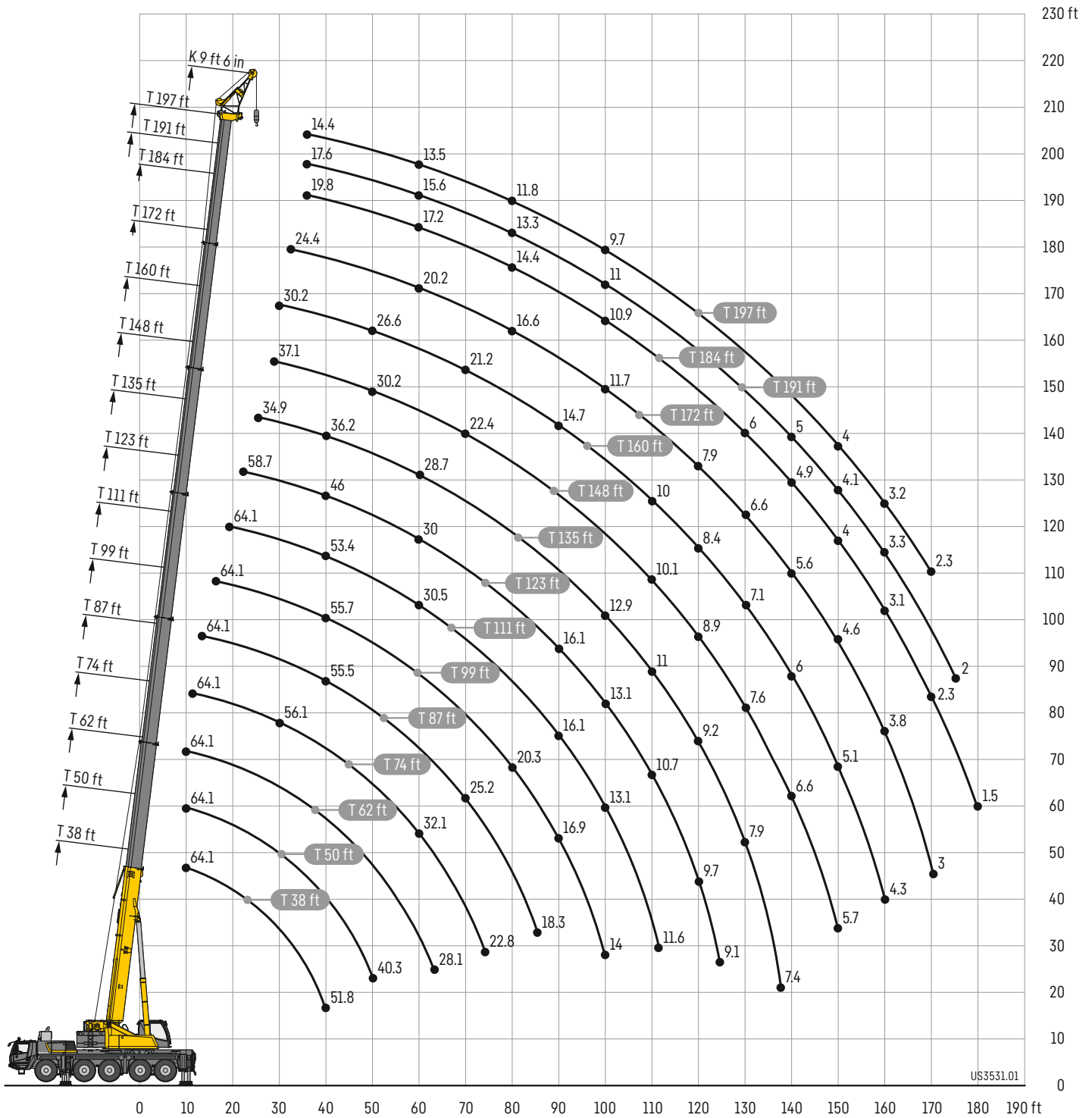
	160 ft + 46 ft			172 ft + 46 ft			184 ft + 46 ft			191 ft + 46 ft			197 ft + 46 ft			
	K/NZK 62 ft															
	0°	20°	40°	0°	20°	40°	0°	20°	40°	0°	20°	40°	0°	20°	40°	
45	6.3															45
50	6.4				4.2							1.6				50
55	6.4				4.4							1.7				55
60	6.4				4.6							1.7				60
65	6.2	5.7			4.7							1.8				65
70	6.1	5.6			4.7							1.9				70
75	6	5.6			4.7	4.5						2	2.5			75
80	5.9	5.6			4.7	4.4						2.1	2.7			80
85	5.8	5.5			4.6	4.4						2.2	2.9			85
90	5.7	5.4	5.1		4.5	4.4						2.4	2.9			90
95	5.6	5.3	5		4.4	4.3	4.1					2.5	2.9	2.8		95
100	5.5	5.1	4.9		4.4	4.3	4.1					2.6	2.9	2.8		100
105	5.3	5	4.8		4.3	4.3	4.1					2.7	2.9	2.8	2.5	105
110	5.2	4.8	4.6		4.2	4.3	4.1					2.7	2.9	2.8	2.5	110
115	5	4.7	4.5		4.1	4.2	4.1					2.8	2.9	2.8	2.1	115
120	4.9	4.6	4.4		4.1	4.1	4					2.7	2.8	2.8	2.2	120
125	4.7	4.4	4.3		4	4.1	4					2.6	2.8	2.8	2.2	125
130	4.6	4.3	4.2		3.9	4	3.9					2.6	2.7	2.7	2.2	130
135	4.4	4.2	4.1		3.8	3.8	3.8					2.5	2.6	2.6	2.2	135
140	4	4.1	4		3.7	3.7	3.7					2.4	2.5	2.5	2.1	140
145	3.7	3.9	3.9		3.4	3.6	3.6					2.4	2.4	2.4	2.1	145
150	3.5	3.8	3.8		2.9	3.5	3.5					2.3	2.3	2.4	2.1	150
155	3.2	3.5	3.7		2.5	3.3	3.5					2.2	2.3	2.3	2	155
160	2.9	3.3	3.6		2.3	3	3.4					1.9	2.2	2.2	1.5	160
165	2.5	3.2	3.3		2.2	2.6	3.2					1.6	2.1	2.2	2.1	165
170	2.1	2.9	3.1		2	2.2	2.8					1.4	1.9	2	1.7	170
175	1.9	2.5	3		1.7	2	2.4					1.7	1.9	1.9	1.9	175
180	1.9	2.1	2.6		1.9	2	2					1.9	1.8	1.8	1.6	180
185	1.7	1.8	2.2		1.7	1.8	1.8					1.5				185
190		1.7	1.9		1.3	1.7	1.7									190
195		1.5	1.6			1.5										195
200			1.5													200

t_305_004_03001_00_000

Lifting heights

Hauteurs de levage

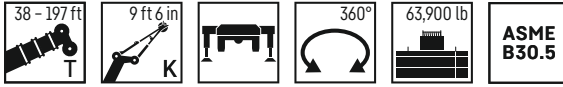
TK



Lifting capacities

Forces de levage

TK



	38 ft	50 ft	62 ft	74 ft	87 ft	99 ft	111 ft	123 ft	135 ft	148 ft	160 ft	172 ft	184 ft	191 ft	197 ft	
	K 9 ft 6 in															
10	64.1	64.1	64.1													10
11	64.1	64.1	64.1	64.1												11
12	64.1	64.1	64.1	64.1												12
13	64.1	64.1	64.1	64.1												13
14	64.1	64.1	64.1	64.1	64.1											14
15	64.1	64.1	64.1	64.1	64.1											15
16	64.1	64.1	64.1	64.1	64.1	64.1										16
17	64.1	64.1	64.1	64.1	64.1	64.1										17
18	64.1	64.1	64.1	64.1	64.1	64.1										18
19	64.1	64.1	64.1	64.1	64.1	64.1	64.1									19
20	64.1	64.1	64.1	64.1	64.1	64.1	64.1									20
22	64.1	64.1	64.1	64.1	64.1	64.1	64.1	58.7								22
24	64.1	64.1	64.1	64.1	64.1	64.1	64.1	57.4	34.9							24
26	64.1	64.1	64.1	64.1	64.1	64.1	64.1	56.1	42.7							26
28	64.1	64.1	64.1	64.1	64.1	64.1	64.1	54.8	41.8	37.1						28
30	64.1	64.1	64.1	64.1	64.1	64.1	63.9	53.4	40.9	36.6	30.2					30
32	64.1	64.1	64.1	64.1	64.1	64.1	62.4	51.9	39.9	36.1	30	24.4				32
34	64.1	64.1	64.1	64.1	64.1	64.1	60.8	50.5	39	35.5	29.8	24.2				34
36	62	63.6	63.6	63.1	62.4	61.7	59.3	49	38.1	35	29.6	24	19.8	17.6	14.4	36
38	58.1	59.4	60	59.8	59.2	57.9	56.8	47.5	37.2	34.4	29.3	23.8	19.7	17.5	14.4	38
40	51.8	55.6	56.1	56.1	55.5	55.7	53.4	46	36.2	33.8	28.9	23.6	19.5	17.4	14.4	40
45		47	47.5	48	48.4	47.7	46.1	42.4	34	32.1	27.8	22.9	19.1	17.1	14.2	45
50		40.3	40.9	41.9	41.7	41.1	40.2	38.2	32.2	30.2	26.6	22.2	18.6	16.6	14	50
55			36.3	36.5	36.3	35.7	34.8	34.1	30.4	28.3	25.3	21.2	18	16.1	13.8	55
60			32	32.1	31.9	31.4	30.5	30	28.7	26.5	24	20.2	17.2	15.6	13.5	60
65			28.1	28.5	28.3	27.7	26.8	26.8	26.2	24.7	22.6	19.2	16.5	15	13.1	65
70				25.4	25.2	24.6	24.2	24.1	23.1	22.4	21.2	18.3	15.7	14.5	12.7	70
75				22.8	22.5	21.9	22.4	21.3	20.9	20.4	19.6	17.5	15.1	13.9	12.3	75
80					20.2	20.3	20	18.9	19	18.5	17.6	16.6	14.4	13.3	11.8	80
85					18.3	18.8	17.9	17.7	17	16.4	16.1	15.6	13.7	12.8	11.2	85
90						16.9	16.1	16.1	15.2	15.2	14.7	13.8	13	12.2	10.7	90
95						15.4	14.5	14.6	13.8	13.8	13.2	12.4	12.2	11.7	10.2	95
100						14	13.1	13.1	12.9	12.5	11.7	11.7	10.9	11	9.7	100
105							11.9	11.9	11.9	11.9	11.2	10.9	10.5	9.7	9.8	105
110							11.6	10.7	11	10.1	10	9.5	8.8	8.9	8.7	110
115								10.1	10	9.5	9.2	8.7	8	8.1	8	115
120								9.7	9.2	8.9	8.4	7.9	7.3	7.3	7.3	120
125								9.1	8.5	8.3	7.7	7.3	6.6	6.7	6.6	125
130									7.9	7.6	7.1	6.6	6	6.1	6	130
135									7.4	7.1	6.5	6.1	5.4	5.5	5.5	135
140										6.6	6	5.6	4.9	5	5	140
145										6.1	5.5	5.1	4.4	4.5	4.5	145
150										5.7	5.1	4.6	4	4.1	4	150
155											4.7	4.2	3.6	3.7	3.6	155
160											4.3	3.8	3.1	3.3	3.2	160
165												3.4	2.7	2.8	2.8	165
170												3	2.3	2.4	2.3	170
175													1.9	2		175
180														1.5		180

t.305.006.12001.00.000

Equipment

Crane carrier

Frame	Liebherr designed and manufactured, box-type, torsion resistant design of hightensile fine grained structural steel.
Outriggers	4-point supporting system, hydraulically telescopic into horizontal and vertical direction. Operation with remote control, automatic support leveling, electronic inclination display.
Engine	6-cylinder Diesel, make Liebherr, watercooled, output 400 kW (544 h.p.), max. torque 1856 lb-ft. Exhaust emissions to (EU 2016/1628 and EPA/CARB or ECE-R.96, spark arrestor. Fuel reservoir: 148 gallons.
Transmission	Automated 12-speed manual gearbox with oil-cooled multi-disk clutch including interarder. Distributor gear, two-stage, with locking differential.
Axles	Low maintenance carrier axles, all 5 axles steered. Axle 2, 4 and 5 are equipped with planetary gears, all driven axles with transverse differential locks, axle 4 with longitudinal differential lock.
Cardan shaft	All cardan shafts with 70° diagonal toothing and maintenance free.
Suspension	All axles are mounted on hydropneumatic suspension – “Niveumatik suspension” and are lockable hydraulically.
Tyres	10 tyres, size: 445/95 R 25 (16.00 R 25).
Steering	2-circuit system with hydraulic servo steering. Active speed depending rear axle steering, special steering programs for various driving situations.
Brakes	Service brake: all-wheel servo-air brake, all axles are equipped with disc brakes, dual circuit. Parking brake: Spring brake actuator, acting on the wheels of the 2nd to 5th axle. Sustained-action brakes: Engine brake as exhaust retarder with Liebherr additional brake system ZBS. Interarder in gearbox.
Driver's cab	Spacious, corrosion-resistant driver's cab which is disconnected from the vehicle frame using spring and damper systems.
Electrical system	Modern data bus technique, 24 Volt DC.

Crane superstructure

Frame	Liebherr-manufactured, torsionally rigid steel construction made from high-tensile fine-grain steel. Slewing ring.
Crane drive	Mechanical drive of the crane hydraulic from the chassis. Variable axial piston pumps with servo control and power regulation.
Control	Electric “Load Sensing” control, simultaneous operation of 4 working motions, 2 self-centering hand control levers (joy-stick type).
Hoist gear	Axial piston fixed displacement motor, Liebherr hoist drum with integrated planetary gear and spring-loaded static brake.
Luffing gear	1 differential ram with pilot-controlled brake valve.
Slewing gear	Axial piston fixed displacement motor, planetary gear, spring-loaded static brake. Slewing gear invertible from released to locked as a standard feature.
Crane cab	Large screen area, compound glass, comfort furnishing, cabin tiltable 20° to rear.
Safety devices	LICCON3 safe load indicator, test system hoist limit switch, safety valves to prevent pipe and hose ruptures.
Telescopic boom	1 base section and 6 telescopic sections. All telescopic sections hydraulically extendable independent of one another. Rapid-cycle telescoping system TELEMATIK. Boom length: 38 ft – 197 ft.
Counterweight	29,500 lb
Electrical system	Modern data bus technique, 24 Volt DC.

Additional equipment

K	Assembly jib 9 ft 6 in
K	Single folding jib, 35 ft. Double swing-away jib 35 ft – 62 ft. Mechanical adjustment 0°; 20°; 40°.
NZK	Single folding jib, 35 ft. Double swing-away jib 35 ft – 62 ft. Hydraulic adjustment 0° – 40°.
V	Telescopic boom extension 2 x 23 ft
2nd hoist gear	For two-hook operation or for operation with swing-away jib if the hoist rope shall remain reeved.
Additional counterweight	34,400 lb for a total counterweight of 63,900 lb.
Tyres	10 tyres, size 525/80 R 25 (20.5 R 25).
Drive 10 x 8	Additional drive of the 1st axle.

Other items of equipment available on request.

Équipement

Châssis porteur

Cadre	Fabrication Liebherr, construction en caisson indéformable, en acier à haute résistance à grains fins.
Calage	Dispositif de calage horizontal et vertical en 4 points, entièrement déployable hydrauliquement. Utilisation avec commande à distance, mise à niveau automatique du calage, inclinomètre électronique.
Moteur	Moteur diesel, 6 cylindres, fabriqué par Liebherr, à refroidissement par eau, de 400 kW (544 ch), couple max. 1856 lb-ft. Emissions des gaz d'échappement conformes aux directives (EU) 2016/1628 et EPA/CARB ou ECE-R.96, pare-étincelles. Capacité du réservoir à carburant: 148 gallons.
Boîte de vitesse	Boîte de vitesses 12 rapports automatisée avec embrayage multidisque sous bain d'huile, incl. ralentisseur. Mécanisme de distribution deux étages avec blocage du différentiel de distribution.
Essieux	Essieux nécessitant peu d'entretien, les 5 essieux sont directeurs. Les essieux 2, 4 et 5 sont des essieux planétaires, tous les essieux moteurs avec différentiel transversal et l'essieu 4 avec différentiel longitudinal.
Arbres articulés	Tous les flasques de croisillons avec denture en croix 70° et sans entretien.
Suspension	Suspension hydropneumatique «Niveumatik» – sur tous les essieux. Chaque essieu peut être bloqué hydrauliquement.
Pneumatiques	10 pneus de taille: 445/95 R 25 (16.00 R 25).
Direction	2 circuits avec direction assistée hydraulique. Direction active des essieux arrière et dépendante de la vitesse, programmes de direction spéciaux pour les différents modes de déplacement.
Freins	Freins de service: servofrein à air comprimé, tous les essieux sont munis de freins à disque, à 2 circuits. Frein à main: ressort accumulé agissant sur les roues des essieux 2 à 5. Freins continus: frein moteur par clapet sur échappement avec système de ralentissement Liebherr ZBS. Ralentisseur monté sur boîte de vitesse.
Cabine	Cabine du grutier spacieuse, résistant à la corrosion, découplée du châssis de l'engin grâce à des systèmes à ressorts amortisseurs.
Installation électrique	Technique moderne de transmission de données par BUS de données, courant continu 24 Volts.

Partie tournante

Cadre	Fabrication Liebherr, construction soudée indéformable, en acier à grain fin haute résistance. Couronne pivotante à billes.
Entraînement	Entraînement mécanique de l'hydraulique de la grue par le châssis de la grue. Pompes réglables à pistons axiaux avec servocommande et réglage de puissance.
Commande	Direction électrique «Load Sensing», 4 mouvements de travail dirigeable simultanément, deux leviers de commande à 4 positions et à autocentrage.
Mécanisme de levage	Moteur à cylindrée constante et à pistons axiaux. Treuil de marque Liebherr équipé d'un engrenage planétaire et d'un frein d'arrêt commandé par ressort.
Mécanisme de relevage	1 vérin différentiel avec clapet de frein commandé.
Dispositif de rotation	Moteur à cylindrée constante à pistons axiaux, engrenage planétaire, frein d'arrêt commandé par ressort. Orientation de série commutable en circuit hydraulique ouvert ou fermé (freinage automatique ou au pied).
Cabine de grue	Large champ de vision, vitrage de sécurité, équipement pour un confort idéal, cabine inclinable de 20° vers l'arrière.
Dispositif de sécurité	Contrôleur de charge «LICCON3», système test limitation de la course pour le levage, soupape de sûreté contre la rupture de tubes et de tuyaux.
Flèche télescopique	1 élément de base et 6 éléments télescopiques. Tous les éléments télescopiques indépendamment les uns des autres. Système de télescopage séquentiel rapide, TELEMATIK. Longueur de flèche: 38 ft – 197 ft.
Contrepoids	29,500 lb
Installation électrique	Technique moderne de transmission de données par BUS de données. Courant continu 24 Volts.

Équipement supplémentaire

K	Flechette de montage 9 ft 6 in
K	Flechette pliante simple, longueur 35 ft. Double flechette pliante 35 ft – 62 ft. Réglage mécanique 0°; 20°; 40°.
NZK	Flechette pliante simple, longueur 35 ft. Double flechette pliante 35 ft – 62 ft. Réglage hydraulique 0° – 40°.
V	Rallonge flèche télescopique 2 x 23 ft
2ème mécanisme de levage	Pour l'utilisation du deuxième crochet, ou bien pour une utilisation avec flechette pliante lorsque le câble de levage principal rest mouflé.
Contrepoids additionnel	34,400 lb pour un contrepoids total de 63,900 lb.
Pneumatiques	10 pneus. Taille: 525/80 R 25 (20.5 R 25).
Entraînement 10 x 8	Essieu 1 est entraîné additionnellement.

Autres équipements supplémentaires sur demande.

Description of symbols

Explication des symboles



Max. capacity
Capacité max.



Gear
Vitesse



Radius
Portée



Max. hoist height
Hauteur de levage max.



Onroad gear
Vitesse de route



Counterweight
Contrepoids



Max. radius
Portée max.



Crawl speed
Marche lente



Outriggers
Calage



Tyres
Pneumatiques



Max. supporting forces
Forces d'appui max.



Slewing gear / Working area
Mécanisme d'orientation / Plage de travail



Hookblock/Capacity
Moufle à crochet/Capacité de charge



Crane superstructure
Partie tournante de la grue



Standard
Norme



No. of sheaves
Poulies



infinitely variable
en continu



Telescopic boom
Flèche télescopique



No. of lines
Brins



Rope diameter
Diamètre



Mechanically/hydraulically adjustable folding jib
Pointe pliante réglable mécaniquement/hydrauliquement



Weight
Poids



Rope length
Longueur du câble



Telescopic boom extension
Rallonge flèche télescopique



Engine
Moteur



Max. single line pull
Effort au brin maxi.



Assembly jib
Flechette de montage



Crane carrier
Châssis porteur



Hoist gear
Treuil de levage



Driving speed
Vitesse de translation



Slewing speeds
Vitesses d'orientation



Gradability
Aptitude à graver les pentes



Boom length
Longueur de la flèche



Transmission
Boîte de vitesse



Boom position
Position de la flèche

Remarks

1. The lifting capacities do not exceed 85 % of the tipping load according to ASME B 30.5. The crane's structural steelwork is in accordance with EN 13000 and ASME B 30.5.
2. For the calculation of the load charts at least a wind speed of 30 ft/s (9 m/s, 20 mph) and regarding the load a sail area of 1 m² per ton load and a wind resistance coefficient of 1.2 on the load have been taken into account. For lifting of loads with large sail areas and/or high wind resistance coefficients the maximum wind speed as stated in the load charts has to be reduced.
3. The lifting capacities stated are valid for lifting operation only (corresponding with crane classification according to ISO 4301-1, crane group A1).
4. Lifting capacities are given in kip.
5. The weight of the hook blocks and hooks is part of the load and therefore it must be deducted from the lifting capacities.
6. Working radii are measured from the slewing center.
7. The stated lengths of the telescopic boom are maximum values and may deviate slightly.
8. The lifting capacities given for the telescopic boom apply if the folding jib is removed.
9. Subject to modification of lifting capacities.
10. Lifting capacities above 153,200 lb / 181,200 lb only with additional pulley block/special equipment.
11. The data of this brochure serves only for general information. All information is provided without warranty. Instructions for the correct commissioning of the crane please take from the operation manual and the load chart book.
12. The illustrations in this brochure may feature accessories and special equipment not included in the standard scope of delivery.

Remarques

1. La capacité de charge ne doit pas dépasser 85 % de la charge de basculement conformément à ASME B 30.5. La structure métallique de la grue est conforme à EN 13000 et ASME B 30.5.
2. Une vitesse de vent de 30 ft/s (9 m/s, 20 mph) minimum, une surface de prise au vent de 1 m² par tonne ainsi qu'un coefficient de résistance au vent de la charge 1,2 sont pris en compte pour le calcul des tableaux de charge. Lorsque des charges ayant une surface de prise au vent et/ou un coefficient de résistance au vent plus élevé(e)s) sont levées, la vitesse de vent maximale indiquée dans les tableaux de charge doit être réduite.
3. Forces de levage pour application de grue de montage (correspond à la classification de grues selon ISO 4301-1, groupe de grues A1).
4. Les charges sont indiquées en kip.
5. Le poids du crochet de levage resp. de la moufle à crochet est une partie de la charge et doit donc être déduit de la capacité de charge.
6. Les portées sont calculées à partir de l'axe de rotation.
7. Les longueurs indiquées pour la flèche télescopique sont des valeurs maximales et peuvent légèrement varier dans la réalité.
8. Les charges indiquées pour la flèche télescopique sont valables lorsque la fléchette pliante est démontée.
9. Charges données sous réserve de modification.
10. Forces de levage plus de 153,200 lb / 181,200 lb seulement avec moufle additionnel/equipement supplémentaire.
11. Les données de cette brochure sont données à titre informatif. Ces renseignements sont sans garantie. Les consignes relatives à la bonne mise en service de la grue sont disponibles dans le manuel d'utilisation et le manuel de tableaux de charge.
12. Les figures contiennent également des accessoires et des équipements spéciaux non inclus de série dans la livraison.

MyLiebherr

Our MyLiebherr portal is the easy way for you to access Liebherr's digital service world.
Take advantage of extensive basic and additional services for your mobile and crawler cranes.

Avec notre portail MyLiebherr, accédez facilement à l'univers numérique du service de Liebherr.
Bénéficiez dès maintenant d'un service global et de prestations complémentaires pour vos grues mobiles et sur chenilles.



One portal, all services

MyLiebherr



Planning

Crane Finder



Operations

Performance



Planning

Crane Planner 2.0



Operations

Documents



Maintenance

Spare Parts Catalogue



Planning

LICCON Work Planner



Training

Digital Crane Operator



Maintenance

Parts Shop

Proposition 65



WARNING: This product can expose you to chemicals, including exhaust emissions, including lead and lead compounds, which are known to the State of California to cause cancer, birth defects or other reproductive harm.
For more information see: www.P65warnings.ca.gov/diesel

Subject to modification · Sous réserve de modifications

Liebherr-Werk Ehingen GmbH · Postfach 1361 · 89582 Ehingen, Germany
Phone +49 73 91 5 02-0 · www.liebherr.com

MyLiebherr



Printed in Germany (1)
lwe-td-305-02-us09-2023