

Derrick equipment

LR 1300 SX
Litronic®

Complies with ANSI/ASME B 30.5
1006.01



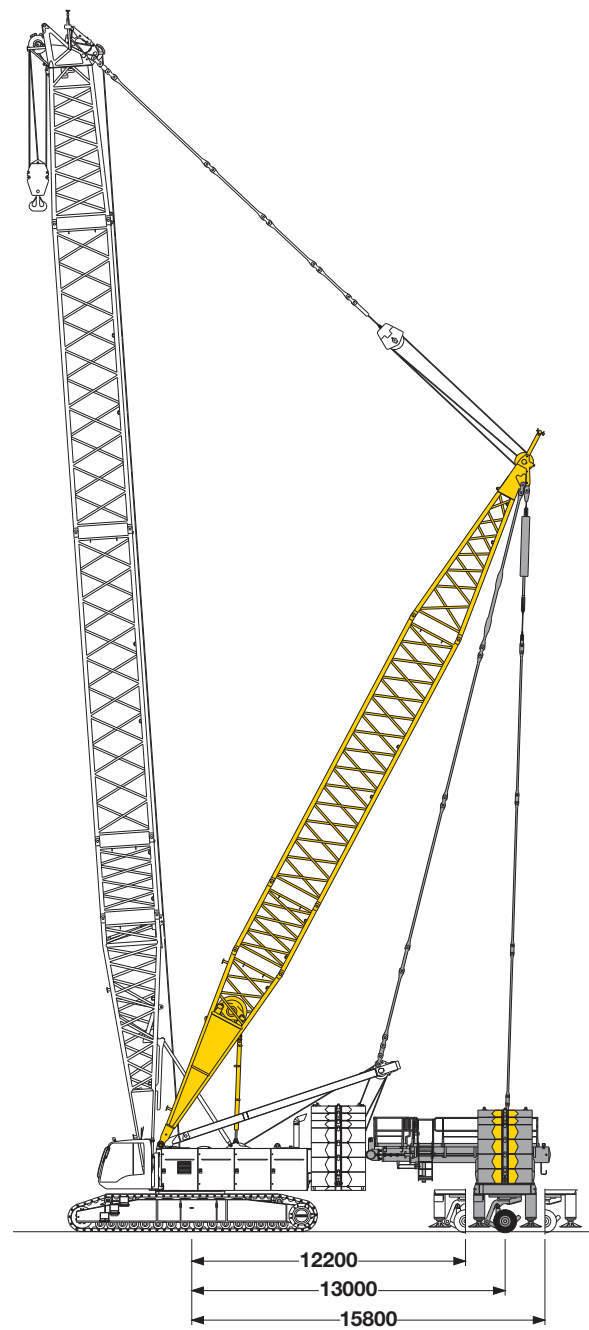
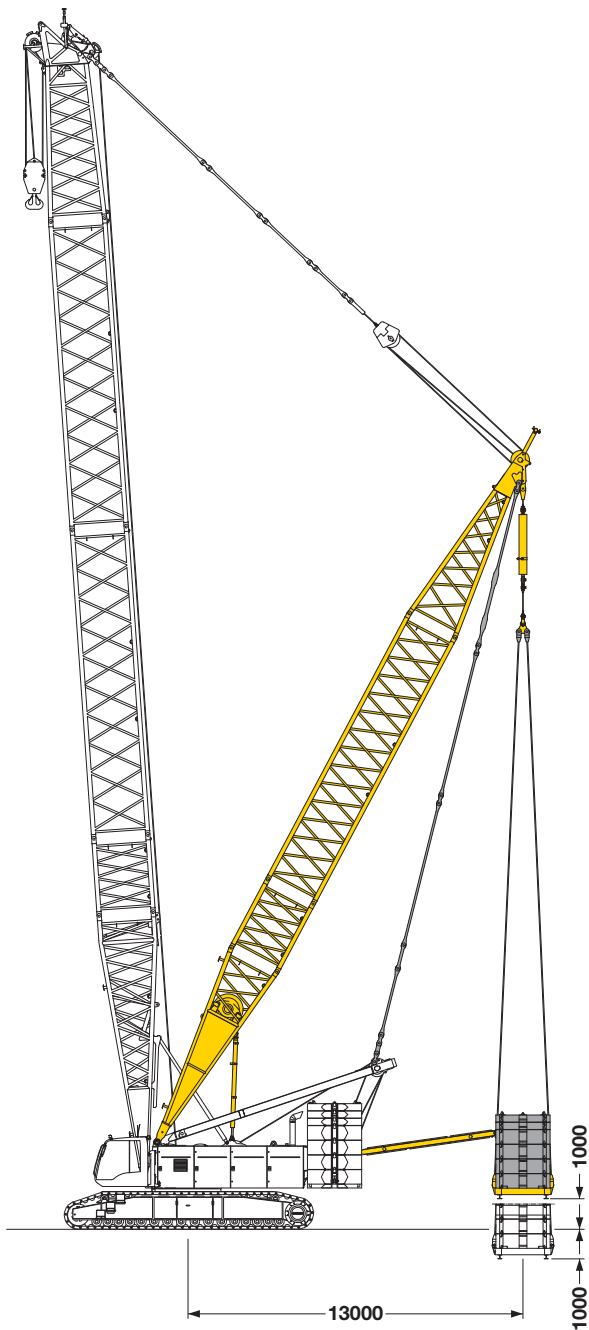
LIEBHERR

Dimensions

Basic machine with derrick equipment

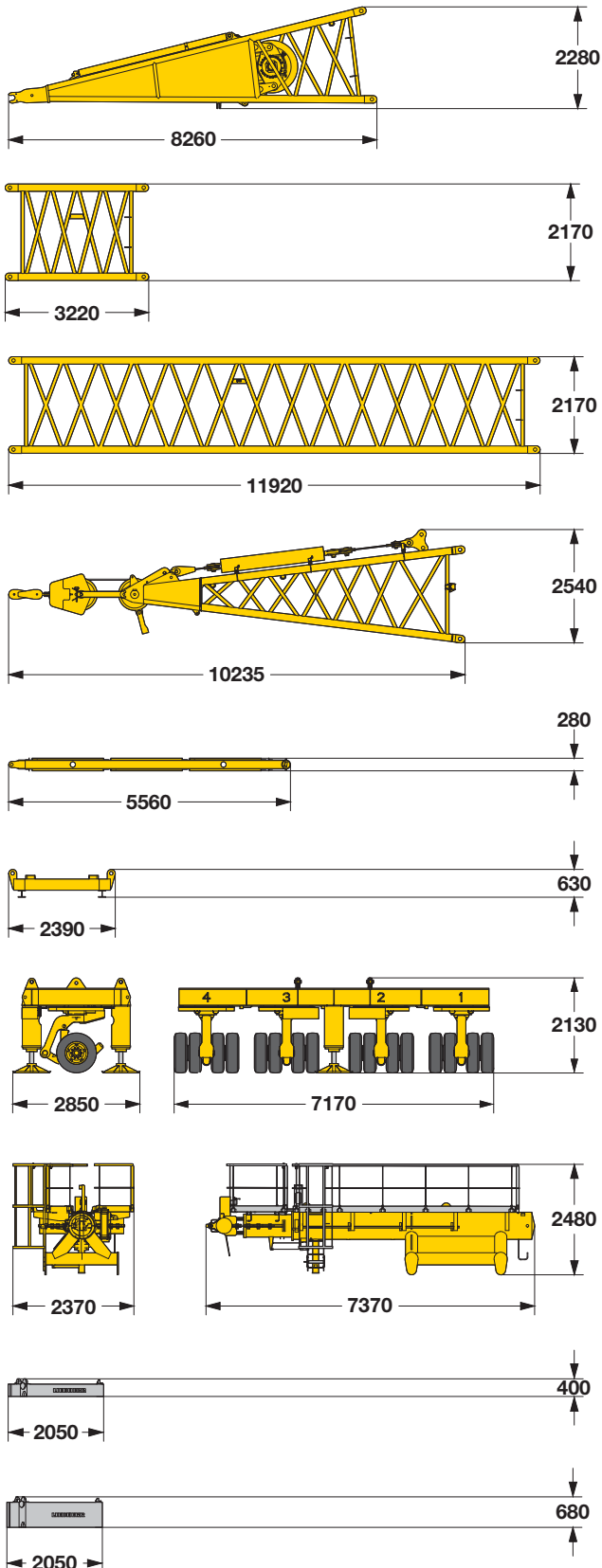
Derrick equipment
with suspended counterweight

Derrick equipment
with wheeled counterweight carriage



Transport dimensions and weights

Basic machine and boom (No. 2220.xx)



Derrick foot (No. 2220.24)

Width	2420 mm
Weight incl. rope	7800 kg

Boom section (No. 2220.24)

Width	2420 mm
Weight incl. pendant straps	1030 kg

Boom section (No. 2220.22)

Width	2420 mm
Weight incl. pendant straps	2560 kg

Boom head (No. 2220.22)

Width	2420 mm
Weight incl. pendant straps	5400 kg

Spacer frame

Width	2470 mm
Weight incl. pendant straps	495 kg

Counterweight frame

Width	5050 mm
Weight incl. pendant ropes	14360 kg

Wheeled counterweight carriage

Width	2850 mm
Weight incl. pendant straps	13155 kg

Telescopic unit

Width	2370 mm
Weight incl. pendant straps	6645 kg

Counterweight

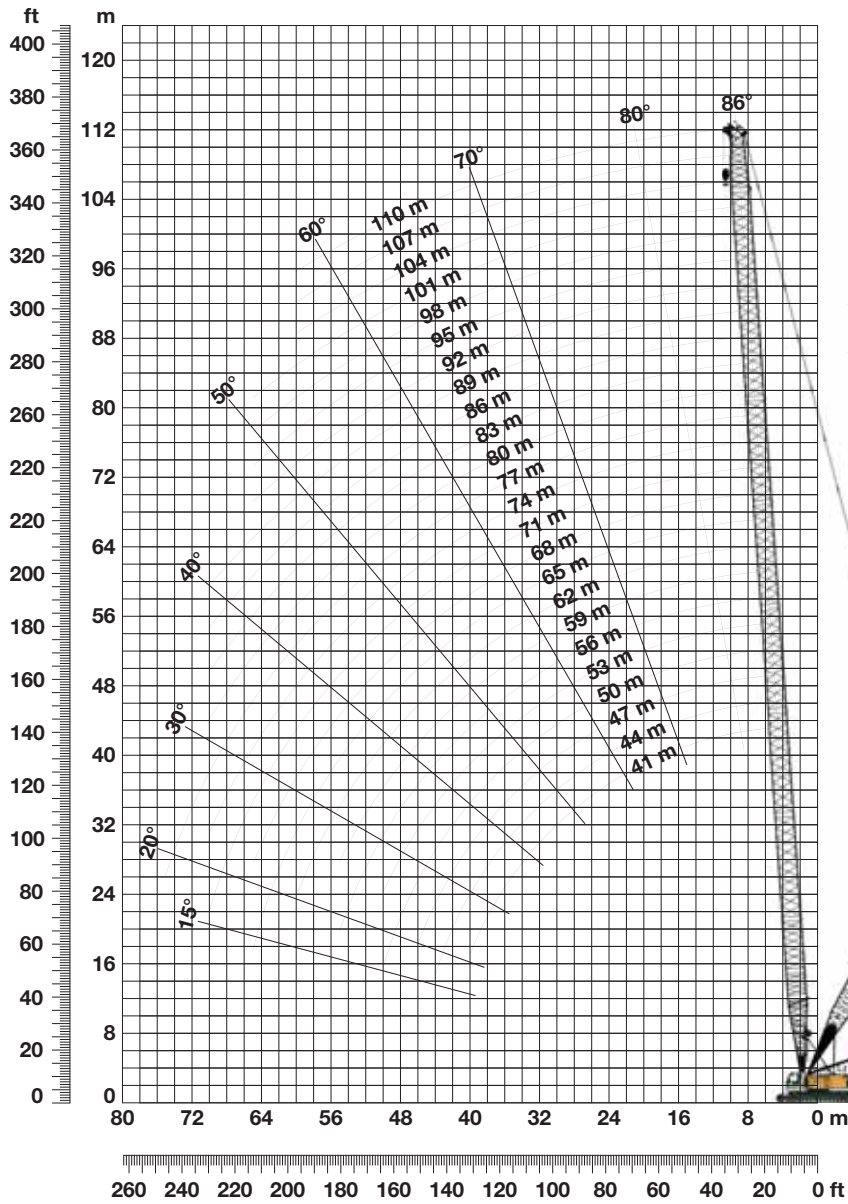
	5 t
Width	2120 mm
Weight incl. pendant straps	5000 kg

Counterweight

	10 t
Width	2120 mm
Weight incl. pendant straps	10000 kg

Working range - main boom 86° - 15°

with 104 t counterweight and 57 t carbody counterweight (main boom No. 2821.30)



Auxiliary jib 36 t



The maximum capacity of the auxiliary jib is 36 t. The corresponding load chart is programmed in the LMI system.

Main boom

from 41 m to 110 m (Table 1 - No. 2821.30)

	Length	Configuration for boom lengths																								
		10 m	11 m	12 m	13 m	14 m	15 m	16 m	17 m	18 m	19 m	20 m	21 m	22 m	23 m	24 m	25 m	26 m	27 m	28 m	29 m					
Boom foot	10 m	1	1	1	1	1	1	1	1	1	1	1	1	1	1	1	1	1	1	1	1					
Boom section	3 m		1		1		1		1		1		1		1		1		1		1					
Boom section	6 m			1	1		1	1		1	1		1	1		1	1		1	1						
Boom section	12 m	2	2	2	2	3	3	3	3	4	4	4	4	5	5	5	5	6	6	6	6	7	7	7	7	
Boom head	7 m	1	1	1	1	1	1	1	1	1	1	1	1	1	1	1	1	1	1	1	1	1	1	1	1	
Boom length (m)		41	44	47	50	53	56	59	62	65	68	71	74	77	80	83	86	89	92	95	98	101	104	107	110	
Auxiliary jib possible		✓	✓	✓	✓	✓	✓	✓	✓	✓	✓	✓	✓	✓	✓	✓	✓	✓	✓	✓	✓	✓	✓	✓	✓	✓

Load chart - main boom

with 104 t counterweight and 57 t carbody counterweight (main boom No. 2821.30)

**Capacities in metric tons for boom lengths (41 m - 110 m) - with 215 kN winches
104 t counterweight and 57 t carbody counterweight**

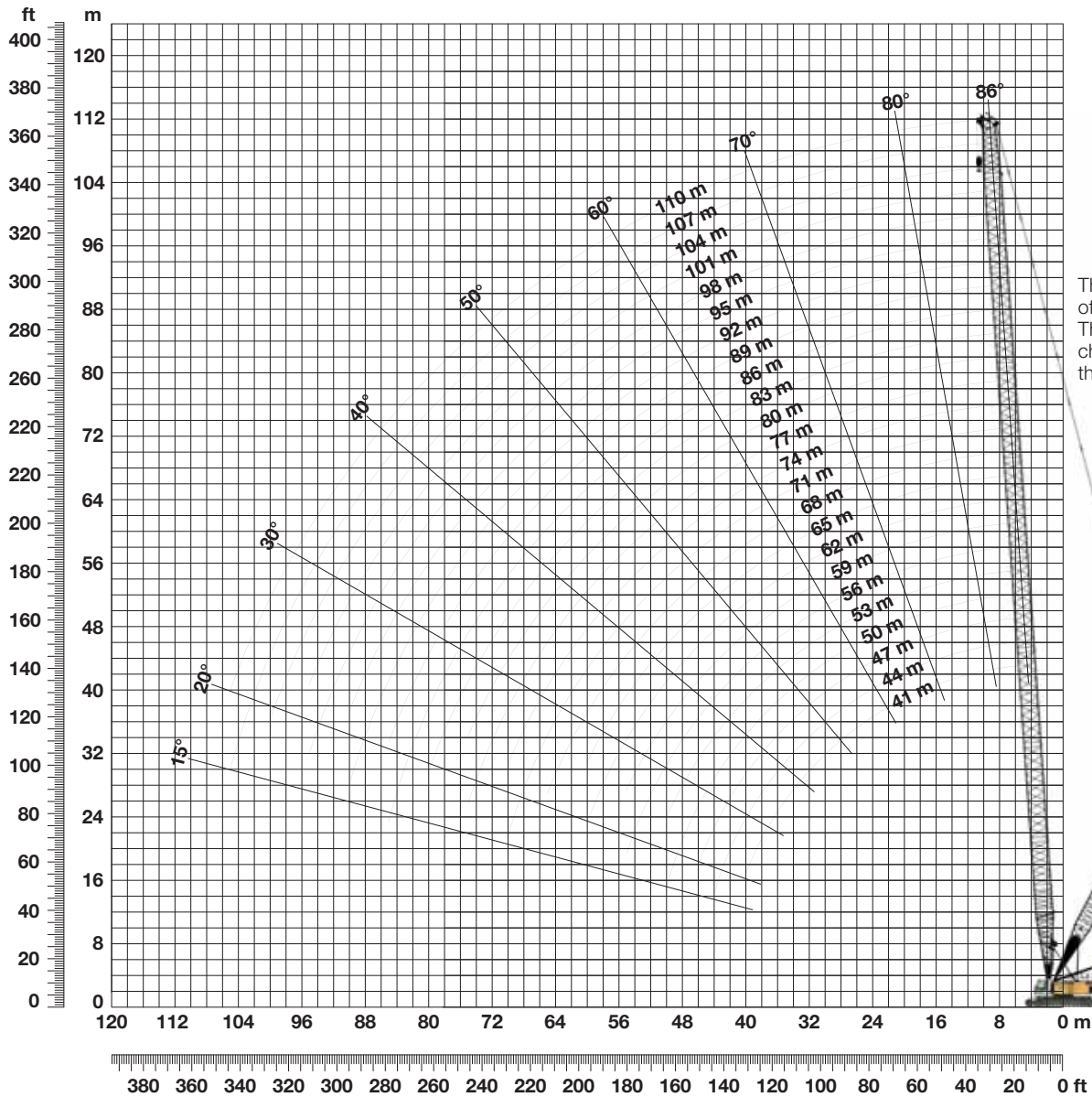
Radius (m)	41 t	47 t	50 t	56 t	62 t	68 t	74 t	80 t	86 t	95 t	104 t	110 t	Radius (m)
5.8	268.2												5.8
6	252.5												6
7	203.2	203.2	203.1	203.1									7
8	169.6	169.6	169.4	169.2	168.9	168.6							8
9	144.8	144.8	144.8	144.6	144.2	143.8	143.3	134.0	115.7				9
10	126.4	126.2	126.0	125.7	125.2	124.8	124.3	123.8	115.7	94.3			10
12	100.1	99.8	99.5	99.1	98.6	98.1	97.5	97.0	96.3	94.3	77.7	68.5	12
14	82.1	81.7	81.4	81.0	80.4	79.9	79.3	78.7	78.0	77.1	76.1	68.5	14
16	69.3	68.9	68.5	68.1	67.5	66.9	66.3	65.7	65.0	64.0	63.0	62.2	16
18	64.1	59.2	58.9	58.5	57.8	57.3	56.5	55.9	55.2	54.2	53.1	52.4	18
20	56.1	55.6	55.3	50.5	49.9	49.3	48.6	48.0	47.2	46.2	45.1	44.8	20
22	49.3	48.8	48.5	48.1	44.0	43.4	42.7	42.0	41.3	40.2	39.1	38.3	22
24	44.1	43.7	43.3	42.9	38.7	38.1	37.4	36.7	36.0	34.9	33.8	33.0	24
26	39.4	39.0	38.6	38.2	37.6	33.8	33.0	32.4	31.6	30.6	29.8	29.0	26
28	35.5	35.0	34.7	34.2	33.6	33.0	30.1	29.0	28.2	27.2	26.0	25.2	28
30	32.1	31.6	31.3	30.8	30.2	29.9	29.2	25.8	25.0	23.9	22.7	21.9	30
32	29.3	28.9	28.5	28.1	27.5	26.9	26.2	25.6	22.2	21.1	19.9	19.1	32
34	26.7	26.2	25.9	25.5	24.8	24.3	23.6	22.9	22.2	18.7	17.5	16.7	34
36	24.3	23.9	23.6	23.1	22.5	22.0	21.2	20.6	19.8	18.8	15.3	15.1	36
38	22.2	21.8	21.5	21.1	20.4	19.9	19.2	18.5	17.8	16.7	14.1	13.2	38
40	20.4	20.0	19.6	19.2	18.6	18.0	17.3	16.7	15.9	15.1	14.4	11.4	40
42		18.3	18.0	17.6	16.9	16.4	15.7	15.1	14.9	13.9	12.7	11.8	42
44		16.8	16.4	16.0	15.4	15.1	14.7	14.1	13.3	12.3	11.1	10.3	44
46		15.4	15.1	15.1	14.6	14.0	13.3	12.7	11.9	10.9	9.7	8.9	46
48			14.2	13.9	13.3	12.7	12.0	11.4	10.6	9.6	8.4	7.6	48
50			12.9	12.6	12.1	11.5	10.8	10.2	9.4	8.4	7.2	6.4	50
55				10.0	9.4	8.9	8.2	7.6	6.9	5.8	4.7	3.8	55
60					7.2	6.8	6.1	5.5	4.7	3.7	2.5	1.7	60
65						4.9	4.3	3.7	2.9	1.9			65
70							2.7	2.1	1.4				70

TLT 10539958 - 141906 offiziell

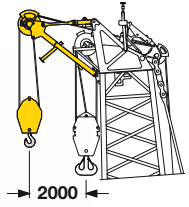
Above load charts are for reference only. For actual lift duty please refer to load chart in operator's cab or manual.

Working range - main boom 86° - 15°

with 104 t counterweight and 57 t carbody counterweight and
max. 120 t suspended counterweight at 13 m radius (main boom No. 2821.30)



Auxiliary jib 36 t



The maximum capacity of the auxiliary jib is 36 t. The corresponding load chart is programmed in the LMI system.

Main boom

from 41 m to 110 m (Table 1 - No. 2821.30)

Length	Configuration for boom lengths																								
	41	44	47	50	53	56	59	62	65	68	71	74	77	80	83	86	89	92	95	98	101	104	107	110	
Boom foot	10 m	1	1	1	1	1	1	1	1	1	1	1	1	1	1	1	1	1	1	1	1	1	1	1	
Boom section	3 m		1		1		1		1		1		1		1		1		1		1		1		
Boom section	6 m			1	1			1	1			1	1			1	1			1	1			1	
Boom section	12 m	2	2	2	2	3	3	3	3	4	4	4	4	5	5	5	5	6	6	6	6	7	7	7	7
Boom head	7 m	1	1	1	1	1	1	1	1	1	1	1	1	1	1	1	1	1	1	1	1	1	1	1	
Boom length (m)		41	44	47	50	53	56	59	62	65	68	71	74	77	80	83	86	89	92	95	98	101	104	107	110
Auxiliary jib possible		✓	✓	✓	✓	✓	✓	✓	✓	✓	✓	✓	✓	✓	✓	✓	✓	✓	✓	✓	✓	✓	✓	✓	✓

Load chart - main boom

with 104 t counterweight and 57 t carbody counterweight and max. 120 t suspended counterweight at 13 m radius (main boom No. 2821.30)

Main boom 41 m

Radius (m)	Suspended counterweight in metric tons at 13 m radius				
	2 t	60 t	80 t	100 t	120 t
5,8	268.2	300.5			
7	203.2	300.5	300.5		
8	169.6	281.8	300.5	300.5	
9	144.8	241.9	275.5	299.9	299.9
10	126.4	211.8	241.0	270.5	299.4
12	100.1	168.8	192.5	216.1	239.8
14	82.1	139.8	159.5	179.5	199.2
16	69.3	118.8	135.9	153.0	170.2
18	64.1	107.7	122.7	137.7	152.7
20	56.1	94.7	108.1	121.4	134.8
22	49.3	84.4	96.4	108.4	120.4
24	44.1	75.7	86.8	97.8	108.7
26	39.4	68.7	78.7	88.7	98.9
28	35.5	62.5	71.9	81.2	90.4
30	32.1	57.4	66.0	74.5	83.3
32	29.3	52.8	60.8	68.9	77.0
34	26.7	48.7	56.4	63.9	71.5
36	24.3	45.1	52.3	59.5	66.6
38	22.2	42.0	48.7	55.5	62.2
40	20.4	39.1	45.4	51.9	57.3
42					
44					

Main boom 47 m

Radius (m)	Suspended counterweight in metric tons at 13 m radius				
	2 t	60 t	80 t	100 t	120 t
7	203.2	269.0	269.0		
8	169.6	268.7	268.7	268.7	
9	144.8	241.7	268.3	268.3	268.3
10	126.2	211.5	240.7	266.9	266.9
12	99.8	168.4	192.1	215.7	239.4
14	81.7	139.4	159.1	179.0	198.8
16	68.9	118.3	135.4	152.6	169.7
18	59.2	102.7	117.5	132.5	147.5
20	55.6	94.3	107.6	121.0	134.3
22	48.8	83.9	95.9	108.0	120.0
24	43.7	75.2	86.4	97.3	108.2
26	39.0	68.2	78.2	88.4	98.4
28	35.0	62.0	71.4	80.7	89.9
30	31.6	56.9	65.5	74.2	82.8
32	28.9	52.3	60.3	68.5	76.5
34	26.2	48.2	55.9	63.4	71.1
36	23.9	44.8	51.9	59.1	66.1
38	21.8	41.6	48.3	55.1	61.8
40	20.0	38.7	45.0	51.5	58.0
42	18.3	36.1	42.3	48.3	54.4
44	16.8	33.7	39.6	45.3	51.2
46	15.4	31.6	37.1	42.7	48.1

Main boom 50 m

Radius (m)	Suspended counterweight in metric tons at 13 m radius				
	2 t	60 t	80 t	100 t	120 t
7	203.1	252.8	252.8		
9	144.8	241.5	251.8	251.8	
10	126.0	211.3	240.5	251.0	251.0
12	99.5	168.2	191.8	215.4	239.1
14	81.4	139.0	158.8	178.7	198.6
16	68.5	117.9	135.1	152.2	169.3
18	58.9	102.3	117.1	132.1	147.1
20	55.3	94.0	107.3	120.7	134.0
22	48.5	83.6	95.6	107.6	119.6
24	43.3	74.9	86.0	96.9	107.9
26	38.6	67.8	77.8	88.0	98.0
28	34.7	61.7	71.1	80.3	89.6
32	28.5	51.9	59.9	68.1	76.1
34	25.9	47.9	55.6	63.1	70.7
36	23.6	44.5	51.5	58.8	65.8
38	21.5	41.3	47.9	54.8	61.4
40	19.6	38.4	44.9	51.2	57.6
42	18.0	35.8	41.9	47.9	54.1
44	16.4	33.4	39.3	45.0	50.8
46	15.1	31.3	36.9	42.4	47.9
48	14.2	29.3	34.6	40.0	45.2
50	12.9	27.4	32.5	37.6	42.2

Main boom 56 m

Radius (m)	Suspended counterweight in metric tons at 13 m radius				
	2 t	60 t	80 t	100 t	120 t
7	203.1	225.0			
8	169.2	224.9	224.9		
9	144.6	224.5	224.5	224.5	
12	99.1	167.8	191.4	215.0	220.9
14	81.0	138.6	158.5	178.3	198.2
16	68.1	117.5	134.6	151.8	168.9
18	58.5	101.9	116.9	131.6	146.6
20	50.5	89.2	102.8	116.1	129.5
22	48.1	83.2	95.2	107.2	119.2
24	42.9	74.5	85.6	96.5	107.4
28	34.2	61.2	70.7	79.9	89.1
32	28.1	51.5	59.7	67.7	75.7
34	25.5	47.4	55.1	62.6	70.3
36	23.1	44.1	51.1	58.3	65.4
38	21.1	40.9	47.5	54.3	61.0
40	19.2	38.0	44.5	50.7	57.2
42	17.6	35.4	41.5	47.5	53.7
44	16.0	33.0	38.9	44.8	50.4
46	15.1	30.9	36.5	42.1	47.5
48	13.9	29.0	34.3	39.6	45.0
50	12.6	27.2	32.2	37.4	42.5
55	10.0	23.1	27.8	32.4	37.0

Above load charts are for reference only. For actual lift duty please refer to load chart in operator's cab or manual.

Load chart - main boom

with 104 t counterweight and 57 t carbody counterweight and
max. 120 t suspended counterweight at 13 m radius (main boom No. 2821.30)

Main boom 62 m

Radius (m)	Suspended counterweight in metric tons at 13 m radius				
	2 t	60 t	80 t	100 t	120 t
8	168.9	197.4			
9	144.2	196.7	196.7		
10	125.2	195.9	195.9	195.9	
12	98.6	167.2	190.8	194.4	194.4
14	80.4	138.0	158.0	177.7	193.1
16	67.5	117.0	134.0	151.1	168.2
18	57.8	101.2	116.2	131.0	146.0
20	49.9	88.6	102.2	115.5	128.8
22	44.0	78.7	90.7	102.9	114.9
24	38.7	70.6	81.5	92.4	103.3
28	33.6	60.6	70.0	79.2	88.6
32	27.5	50.9	59.1	67.0	75.0
36	22.5	43.4	50.5	57.7	64.7
38	20.4	40.2	46.9	53.7	60.3
40	18.6	37.4	43.8	50.1	56.6
42	16.9	34.8	40.9	46.9	53.0
44	15.4	32.4	38.3	44.1	49.8
46	14.6	30.3	35.9	41.5	46.9
48	13.3	28.4	33.7	39.0	44.4
50	12.1	26.6	31.6	36.8	41.9
55	9.4	22.6	27.3	31.9	36.5
60	7.2	19.3	23.5	27.8	32.0

Main boom 68 m

Radius (m)	Suspended counterweight in metric tons at 13 m radius				
	2 t	60 t	80 t	100 t	120 t
8	168.6	173.1			
10	124.8	171.9	171.9		
12	98.1	166.7	171.0	171.0	
14	79.9	137.5	157.4	171.0	171.0
16	66.9	116.6	133.5	150.6	167.7
18	57.3	100.7	115.6	130.6	145.4
20	49.3	88.3	101.6	114.9	128.2
22	43.4	78.1	90.1	102.3	114.3
24	38.1	70.0	80.9	91.8	102.9
28	33.0	60.0	69.5	78.7	88.1
32	26.9	50.3	58.5	66.5	74.5
36	22.0	42.9	49.9	57.1	64.2
38	19.9	39.7	46.3	53.1	59.8
40	18.0	36.8	43.3	49.6	56.0
42	16.4	34.2	40.4	46.3	52.5
44	15.1	31.9	37.7	43.6	49.3
46	14.0	29.9	35.3	40.9	46.4
48	12.7	27.9	33.1	38.5	43.8
50	11.5	26.1	31.1	36.2	41.4
55	8.9	22.1	26.8	31.4	36.0
60	6.8	18.8	23.1	27.3	31.5
65	4.9	16.1	19.9	23.8	27.7

Main boom 74 m

Radius (m)	Suspended counterweight in metric tons at 13 m radius				
	2 t	60 t	80 t	100 t	120 t
9	143.3	152.0			
12	97.5	150.9	150.9	150.9	
14	79.3	136.8	150.8	150.8	150.8
16	66.3	115.9	132.8	149.9	150.8
18	56.5	100.0	114.9	129.9	144.7
20	48.6	87.6	100.9	114.2	127.5
22	42.7	77.4	89.4	101.6	113.6
24	37.4	69.3	80.2	91.1	102.2
28	30.1	56.6	65.8	75.0	84.4
32	26.2	49.6	57.8	65.8	73.9
36	21.2	42.2	49.2	56.4	63.4
38	19.2	39.0	45.6	52.4	59.2
40	17.3	36.1	42.6	48.9	55.3
42	15.7	33.5	39.7	45.6	51.8
44	14.7	31.2	37.0	42.9	48.6
46	13.3	29.2	34.6	40.2	45.6
48	12.0	27.2	32.4	37.8	43.1
50	10.8	25.4	30.4	35.5	40.7
55	8.2	21.4	26.1	30.7	35.3
60	6.1	18.2	22.4	26.7	30.9
65	4.3	15.4	19.3	23.2	27.1
70	2.7	13.3	16.6	20.2	23.9

Main boom 80 m

Radius (m)	Suspended counterweight in metric tons at 13 m radius				
	2 t	60 t	80 t	100 t	120 t
9	134.0	134.0			
12	97.0	134.0	134.0		
14	78.7	134.0	134.0	134.0	
16	65.7	115.3	132.2	134.0	134.0
18	55.9	99.3	114.3	129.3	134.0
20	48.0	86.9	100.2	113.5	126.8
24	36.7	68.6	79.5	90.4	101.5
28	29.0	55.9	65.1	74.4	83.8
32	25.6	49.0	57.2	65.1	73.3
36	20.6	41.5	48.5	55.8	62.8
38	18.5	38.3	45.0	51.8	58.6
40	16.7	35.5	42.0	48.2	54.7
42	15.1	32.9	39.0	45.0	51.1
44	14.1	30.5	36.4	42.3	47.9
46	12.7	28.5	34.0	39.6	45.0
48	11.4	26.6	31.8	37.2	42.5
50	10.2	24.8	29.9	34.9	40.1
55	7.6	20.8	25.5	30.1	34.7
60	5.5	17.6	21.8	26.1	30.3
65	3.7	15.1	18.7	22.6	26.6
70	2.1	12.8	16.1	19.7	23.3
75		10.6	14.0	17.1	20.5

Above load charts are for reference only. For actual lift duty please refer to load chart in operator's cab or manual.

Load chart - main boom

with 104 t counterweight and 57 t carbody counterweight and max. 120 t suspended counterweight at 13 m radius (main boom No. 2821.30)

Main boom 86 m

Radius (m)	Suspended counterweight in metric tons at 13 m radius				
	2 t	60 t	80 t	100 t	120 t
9	115.7				
10	115.7	115.7			
14	78.0	115.7	115.7		
16	65.0	114.6	115.7	115.7	
18	55.2	98.6	113.6	115.7	115.7
20	47.2	86.2	99.5	112.8	115.7
24	36.0	67.8	78.7	89.6	100.7
28	28.2	55.2	64.4	73.8	83.0
32	22.2	45.6	53.8	61.8	70.0
36	19.8	40.8	47.8	55.0	62.0
40	15.9	34.7	41.2	47.5	53.9
42	14.9	32.1	38.3	44.4	50.4
44	13.3	29.9	35.6	41.5	47.2
46	11.9	27.8	33.2	38.8	44.4
48	10.6	25.8	31.1	36.4	41.8
50	9.4	24.0	29.2	34.2	39.3
55	6.9	20.1	24.8	29.4	34.0
60	4.7	16.8	21.1	25.3	29.6
65	2.9	14.5	18.0	21.9	25.8
70	1.4	12.1	15.4	19.0	22.6
75		10.0	13.4	16.4	19.8
85		6.4	9.4	12.4	15.1

Main boom 95 m

Radius (m)	Suspended counterweight in metric tons at 13 m radius				
	2 t	60 t	80 t	100 t	120 t
10	94.3				
12	94.3	94.3			
16	64.0	94.3	94.3		
18	54.2	94.3	94.3	94.3	
20	46.2	85.2	94.3	94.3	94.3
24	34.9	66.8	77.7	88.6	94.3
28	27.2	54.1	63.3	72.8	81.9
32	21.1	44.9	52.8	60.7	68.9
36	18.8	39.8	46.8	54.0	61.0
38	16.7	36.5	43.4	50.0	56.8
40	15.1	33.7	40.2	46.4	52.9
42	13.9	31.1	37.3	43.4	49.4
44	12.3	28.9	34.6	40.5	46.2
46	10.9	26.8	32.2	37.8	43.4
48	9.6	24.8	30.1	35.4	40.7
50	8.4	23.0	28.2	33.2	38.3
55	5.8	19.1	23.7	28.4	32.9
60	3.7	15.8	20.1	24.4	28.6
65	1.9	13.5	17.0	20.9	24.8
70		11.1	14.8	18.0	21.6
80		7.2	10.4	13.5	16.4
90		4.1	6.9	9.7	12.5

Main boom 104 m

Radius (m)	Suspended counterweight in metric tons at 13 m radius				
	2 t	60 t	80 t	100 t	120 t
12	77.7				
14	76.1	77.7			
16	63.0	77.7	77.7		
20	45.1	77.7	77.7	77.7	
24	33.8	65.7	76.6	77.7	77.7
28	26.0	53.0	62.2	71.6	77.7
32	19.9	43.7	51.6	59.7	67.7
36	15.3	36.3	43.6	50.6	57.8
40	14.4	32.5	39.0	45.3	51.7
42	12.7	30.1	36.1	42.3	48.2
44	11.1	27.7	33.4	39.3	45.0
46	9.7	25.6	31.1	36.7	42.3
48	8.4	23.6	29.0	34.2	39.6
50	7.2	21.8	27.0	32.0	37.1
55	4.7	17.9	22.6	27.3	31.8
60	2.5	15.1	18.9	23.2	27.5
65		12.3	15.9	19.8	23.7
70		9.9	13.6	16.9	20.5
80		6.0	9.2	12.4	15.3
90		3.0	5.8	8.7	11.5
95		1.7	4.4	7.1	9.7
100			3.1	5.6	8.1

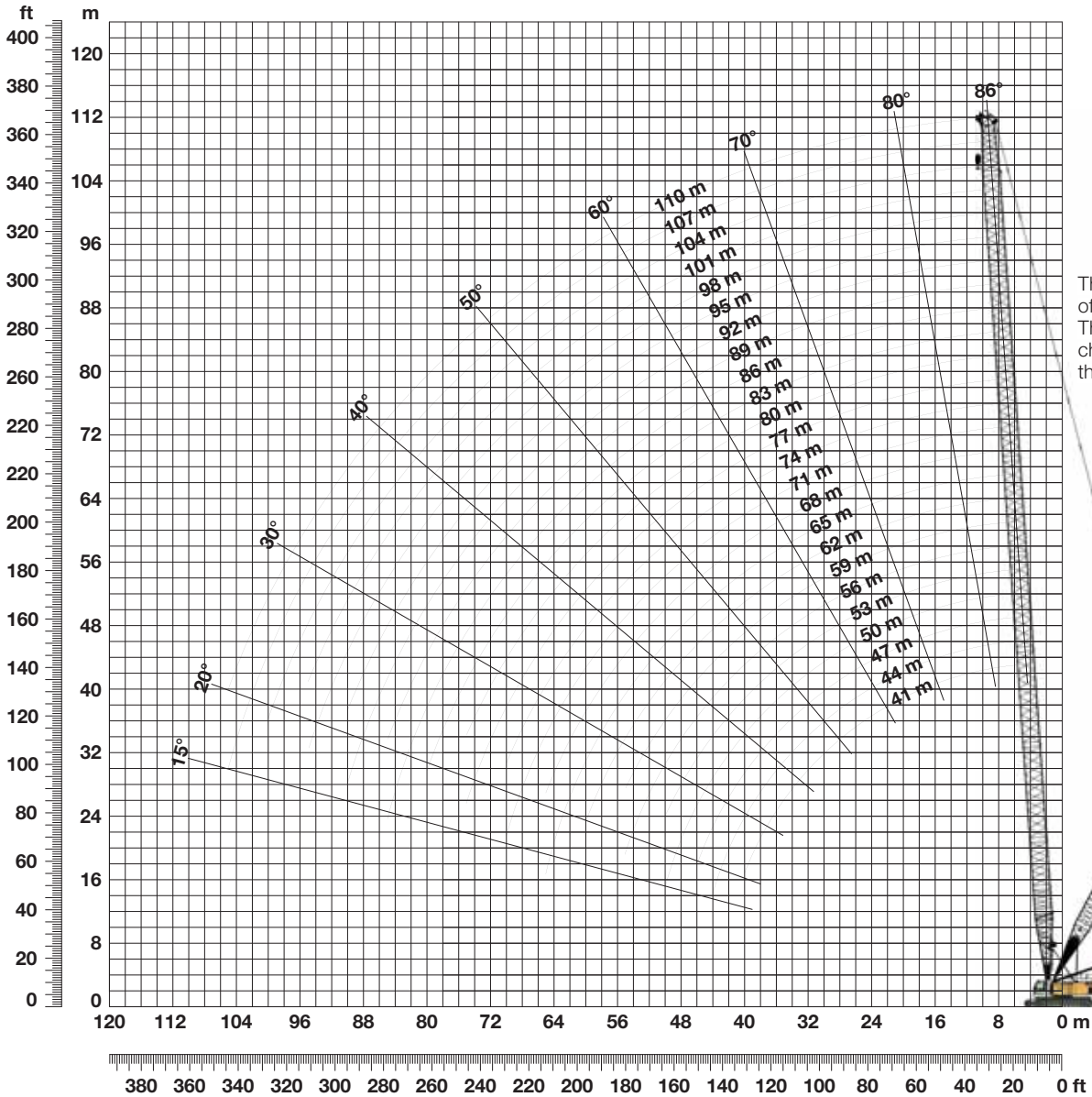
Main boom 110 m

Radius (m)	Suspended counterweight in metric tons at 13 m radius				
	2 t	60 t	80 t	100 t	120 t
12	68.5				
14	68.5	68.5			
18	52.4	68.5	68.5		
22	38.3	68.5	68.5	68.5	
26	29.0	58.1	68.1	68.5	68.5
28	25.2	52.2	61.4	68.5	68.5
32	19.1	42.9	50.8	59.0	66.9
36	15.1	35.5	42.7	49.7	57.0
40	11.4	29.9	36.2	42.6	48.9
42	11.8	29.3	35.3	41.4	47.4
44	10.3	26.9	32.6	38.5	44.4
46	8.9	24.8	30.2	35.8	41.4
48	7.6	22.8	28.2	33.4	38.8
50	6.4	21.0	26.2	31.2	36.3
55	3.8	17.1	21.8	26.4	31.0
60	1.7	14.3	18.1	22.4	26.7
65		11.5	15.1	19.0	22.9
70		9.1	12.8	16.1	19.7
80		5.3	8.5	11.6	14.8
90		2.2	5.1	7.9	10.7
100			2.3	4.9	7.4
105			1.2	3.6	5.9

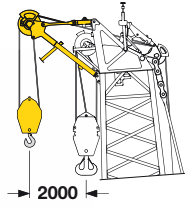
Above load charts are for reference only. For actual lift duty please refer to load chart in operator's cab or manual.

Working range - main boom 86° - 15°

with 104 t counterweight and 57 t carbody counterweight and
120 t wheeled counterweight carriage at 13 m radius (main boom No. 2821.30)



Auxiliary jib 36 t



The maximum capacity of the auxiliary jib is 36 t. The corresponding load chart is programmed in the LMI system.

Main boom

from 41 m to 110 m (Table 1 - No. 2821.30)

Length	Configuration for boom lengths																							
	10 m	11	12	13	14	15	16	17	18	19	20	21	22	23	24	25	26	27	28	29				
Boom foot	1	1	1	1	1	1	1	1	1	1	1	1	1	1	1	1	1	1	1	1				
Boom section		1		1		1		1		1		1		1		1		1		1				
Boom section			1	1			1	1			1	1			1	1			1	1				
Boom section	2	2	2	2	3	3	3	3	4	4	4	4	5	5	5	5	6	6	6	6	7	7	7	7
Boom head	1	1	1	1	1	1	1	1	1	1	1	1	1	1	1	1	1	1	1	1	1	1	1	1
Boom length (m)	41	44	47	50	53	56	59	62	65	68	71	74	77	80	83	86	89	92	95	98	101	104	107	110
Auxiliary jib possible	✓	✓	✓	✓	✓	✓	✓	✓	✓	✓	✓	✓	✓	✓	✓	✓	✓	✓	✓	✓	✓	✓	✓	✓

Load chart - main boom

with 104 t counterweight and 57 t carbody counterweight and
120 t wheeled counterweight carriage at 13 m radius (main boom No. 2821.30)

Capacities in metric tons for boom lengths (41 m - 110 m) - with 215 kN winches
104 t counterweight and 57 t carbody counterweight and 120 t wheeled counterweight carriage

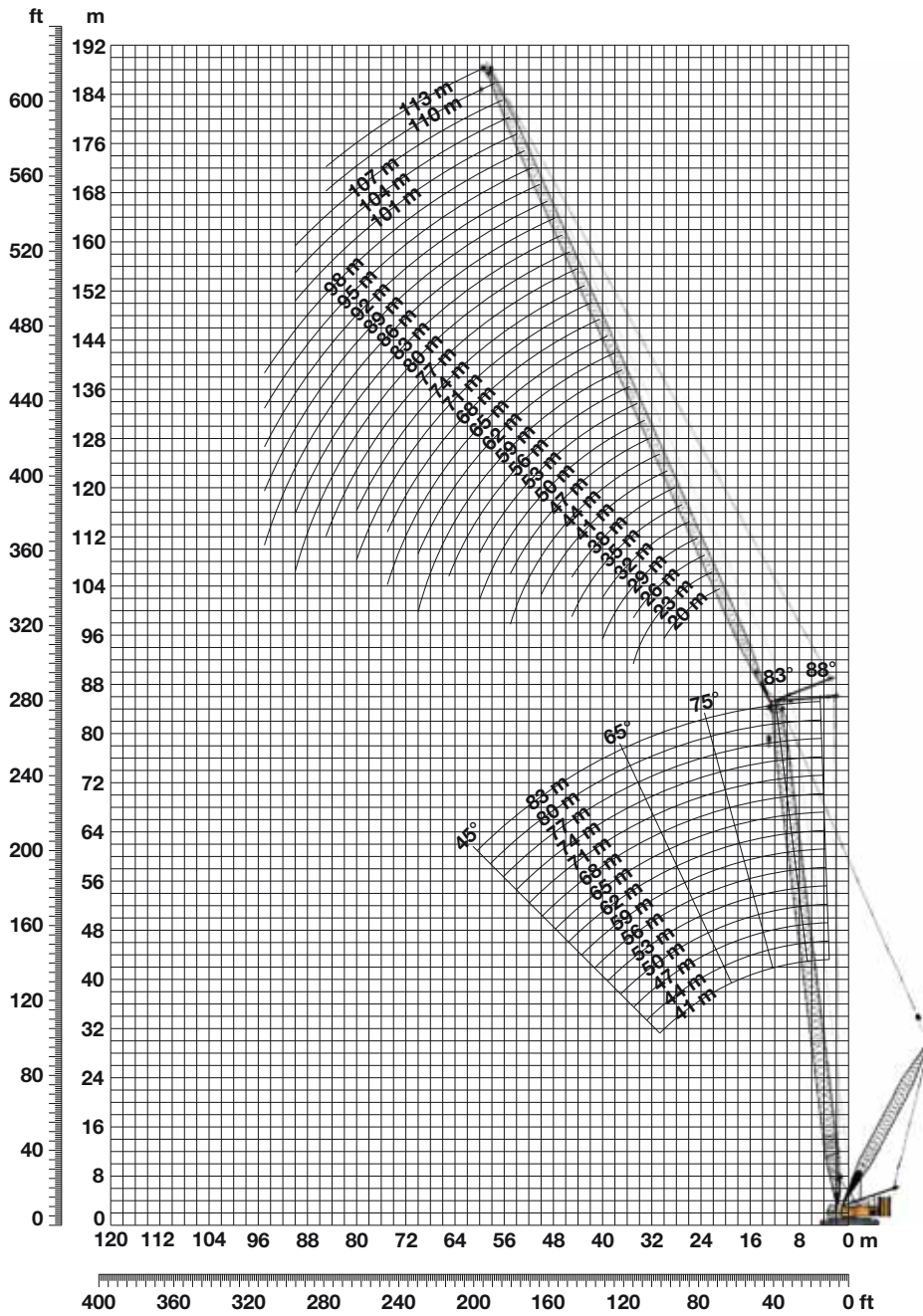
Radius (m)	41 t	47 t	50 t	56 t	62 t	68 t	74 t	80 t	86 t	95 t	104 t	110 t	Radius (m)
6	300.5												6
7	300.5	269.0	252.8	225.0									7
8	300.5	268.7	252.3	224.9	197.4	173.1	30.1						8
9	299.9	268.3	251.8	224.5	196.7	172.8	152.0	134.0	115.7				9
10	299.4	266.9	251.0	224.1	195.9	171.9	151.6	134.0	115.7	94.3			10
12	239.8	239.4	239.1	220.9	194.4	171.0	150.9	134.0	115.7	94.3	77.7	68.5	12
14	199.2	198.8	198.6	198.2	193.1	171.0	150.8	134.0	115.7	94.3	77.7	68.5	14
16	170.2	169.7	169.3	168.9	168.2	167.7	150.8	134.0	115.7	94.3	77.7	68.5	16
18	152.7	147.5	147.1	146.6	146.0	145.4	144.7	134.0	115.7	94.3	77.7	68.5	18
20	134.8	134.3	134.0	129.5	128.8	128.2	127.5	126.8	115.7	94.3	77.7	68.5	20
22	120.4	120.0	119.6	119.2	114.9	114.3	113.6	112.9	112.1	94.3	77.7	68.5	22
24	108.7	108.2	107.9	107.4	103.3	102.9	102.2	101.5	100.7	94.3	77.7	68.5	24
26	98.9	98.4	98.0	97.6	97.0	93.2	92.5	91.8	91.0	90.0	77.7	68.5	26
28	90.4	89.9	89.6	89.1	88.6	88.1	84.4	83.8	83.0	81.9	77.7	68.5	28
30	83.3	82.8	82.4	82.0	81.4	80.8	80.1	76.7	75.9	74.9	73.9	68.5	30
32	77.0	76.5	76.1	75.7	75.0	74.5	73.9	73.3	70.0	68.9	67.7	66.9	32
34	71.5	71.1	70.7	70.3	69.6	69.1	68.4	67.7	67.0	63.5	62.3	61.5	34
36	66.6	66.1	65.8	65.4	64.7	64.2	63.4	62.8	62.0	61.0	57.8	57.0	36
38	62.2	61.8	61.4	61.0	60.3	59.8	59.2	58.6	57.9	56.8	53.5	52.7	38
40	57.3	58.0	57.6	57.2	56.6	56.0	55.3	54.7	53.9	52.9	51.7	48.9	40
42		54.4	54.1	53.7	53.0	52.5	51.8	51.1	50.4	49.4	48.2	47.4	42
44		51.2	50.8	50.4	49.8	49.3	48.6	47.9	47.2	46.2	45.0	44.4	44
46		48.1	47.9	47.5	46.9	46.4	45.6	45.0	44.4	43.4	42.3	41.4	46
48			45.2	45.0	44.4	43.8	43.1	42.5	41.8	40.7	39.6	38.8	48
50			42.2	42.5	41.9	41.4	40.7	40.1	39.3	38.3	37.1	36.3	50
55				37.0	36.5	36.0	35.3	34.7	34.0	32.9	31.8	31.0	55
60					32.0	31.5	30.9	30.3	29.6	28.6	27.5	26.7	60
65						27.7	27.1	26.6	25.8	24.8	23.7	22.9	65
70							23.9	23.3	22.6	21.6	20.5	19.7	70
75								20.5	19.8	18.8	17.7	16.9	75
80									17.3	16.4	15.3	14.8	80
85									15.1	14.5	13.4	12.7	85
90										12.5	11.5	10.7	90
95											9.7	9.0	95
100											8.1	7.4	100
105												5.9	105

TLT 10539958 - 141906 offiziell

Above load charts are for reference only. For actual lift duty please refer to load chart in operator's cab or manual.

Working range - luffing jib 78° - 15°

with max. 124 t counterweight and 57 t carbody counterweight (luffing jib No. 2316.xx)



Jib configuration for jib lengths (41 - 113 m)

Boom configuration (No. 2821.30) for boom lengths (41 - 110 m) - see table 1, page 10

	Length	Configuration for luffing jib lengths																								
		41	44	47	50	53	56	59	62	65	68	71	74	77	80	83	86	89	92	95	98	101	104	107	110	113
Fixed jib foot	10 m	1	1	1	1	1	1	1	1	1	1	1	1	1	1	1	1	1	1	1	1	1	1	1	1	1
Fixed jib section	3 m	1		1		1		1		1		1		1		1		1		1		1		1		1
Fixed jib section	6 m	1			1	1			1	1			1	1			1	1			1	1			1	1
Fixed jib section	12 m	1	2	2	2	2	3	3	3	3	4	4	4	4	5	5	5	5	6	6	6	6	7	7	7	7
Fixed jib head	10 m	1	1	1	1	1	1	1	1	1	1	1	1	1	1	1	1	1	1	1	1	1	1	1	1	1
Fixed jib length (m)		41	44	47	50	53	56	59	62	65	68	71	74	77	80	83	86	89	92	95	98	101	104	107	110	113

Load chart - luffing jib 78° - 15°

with max. 124 t counterweight and 57 t carbody counterweight (luffing jib No. 2316.xx)
Main boom angle 88°

Main boom 44 m

Radius (m)	Jib length in (m)							
	41	53	65	77	89	95	104	113
	t	t	t	t	t	t	t	t
13.2	84.6							
18	64.8	59.3						
20	57.4	56.6	42.9					
22	51.2	50.4	42.0	30.1				
24	46.1	45.3	41.3	30.1	22.9			
26	42.2	41.4	40.3	30.1	22.8	19.3		
28	38.6	37.8	37.0	29.8	22.2	19.0	14.9	
55		15.8	15.1	14.7	13.8	13.4	11.0	8.2
65			11.9	11.2	10.3	9.9	9.3	7.5
75				8.6	7.8	7.4	6.8	6.1
85					5.9	5.5	4.9	4.2
95						4.0	3.4	1.0
105							2.2	

Main boom 50 m

Radius (m)	Jib length in (m)							
	41	53	65	77	89	95	104	113
	t	t	t	t	t	t	t	t
13.4	76.9							
18	64.7	54.7						
20	57.3	53.6	40.3					
22	51.1	50.3	39.6	29.7				
24	46.1	45.2	39.0	29.5	22.1			
26	42.2	41.4	37.8	28.8	22.1	18.8		
28	38.5	37.7	36.9	28.4	21.7	18.6	14.6	
55		15.8	15.1	14.6	13.8	13.4	10.8	8.1
65			11.9	11.1	10.3	9.9	9.3	7.4
75				8.6	7.8	7.4	6.8	6.1
85					5.9	5.5	4.9	4.2
95						4.0	3.4	1.1
105							2.2	

Main boom 62 m

Radius (m)	Jib length in (m)							
	41	53	65	77	89	95	104	113
	t	t	t	t	t	t	t	t
13.9	63.0							
18	59.4	46.7						
20	57.0	45.4	35.3					
22	50.8	44.0	34.7	26.6				
24	45.8	42.7	34.0	26.4	20.2			
26	41.9	41.1	33.1	25.9	20.2	17.5		
28	38.3	37.5	32.3	25.5	19.9	17.4	13.7	
55		15.6	15.1	14.5	13.6	12.9	10.5	7.8
65			11.8	11.0	10.2	9.8	9.1	7.2
75				8.5	7.7	7.3	6.7	6.0
85					5.8	5.4	4.8	4.1
95						3.9	3.3	1.2
105							2.1	

Main boom 74 m

Radius (m)	Jib length in (m)							
	41	53	65	77	89	95	104	113
	t	t	t	t	t	t	t	t
14.3	52.3							
18	49.3	39.6						
20	47.5	38.5	30.1					
22	45.4	37.4	30.0	23.5				
24	43.4	36.3	29.4	23.4				
26	41.6	35.1	28.5	23.0	18.2	16.0		
28	38.0	33.7	27.8	22.6	17.9	15.9	12.9	
55		15.5	15.1	14.3	13.4	12.3	9.9	7.4
65			11.7	10.9	10.0	9.6	9.0	6.8
75				8.4	7.5	7.1	6.5	5.8
85					5.7	5.3	4.7	4.0
95						3.8	3.2	1.3
105							2.0	

Main boom 80 m

Radius (m)	Jib length in (m)							
	41	53	65	77	89	95	104	113
	t	t	t	t	t	t	t	t
14.5	46.9							
18	45.0	36.5						
20	43.3	35.5	28.3					
22	41.6	34.5	28.0	22.0				
24	39.8	33.4	27.3	21.9				
26	38.4	32.4	26.5	21.5	17.2	15.0		
28	36.4	31.1	25.8	21.1	16.8	15.0	12.3	
55		15.4	15.0	14.2	12.7	11.6	9.6	7.2
65			11.6	10.8	9.9	9.5	8.7	6.6
75				8.3	7.5	7.1	6.4	5.7
85					5.6	5.2	4.6	3.9
95						3.7	3.1	1.4
105							1.9	

Main boom 83 m

Radius (m)	Jib length in (m)							
	41	53	65	77	89	95	104	113
	t	t	t	t	t	t	t	t
14.6	44.9							
18	43.0	35.0						
20	41.4	34.1	27.2					
22	39.8	33.1	27.0					
24	38.2	32.1	26.3	21.3				
26	36.9	31.2	25.6	20.8	16.7	14.6		
28	35.0	29.9	24.9	20.4	16.4	14.6	12.0	
55		15.3	15.0	14.1	12.2	11.2	9.5	7.1
65			11.5	10.7	9.9	9.5	8.5	6.5
75				8.2	7.4	7.0	6.4	5.6
85					5.6	5.2	4.6	3.9
95						3.7	3.1	1.4
105							1.9	

TLT 10539958 - M 141906 offiziell

Counterweight 124 t 104 t 74 t

Capacities in metric tons with luffing jib (No. 2316.xx), max. 124 t counterweight + 57 t carbody counterweight. Above load charts are for reference only. For actual lift duty and complete chart with all available configurations please refer to load chart in operator's cab or manual.

Load chart - luffing jib 78° - 15°

with max. 124 t counterweight and 57 t carbody counterweight (luffing jib No. 2316.xx)

Main boom angle 83°

Main boom 44 m

Radius (m)	Jib length in (m)							
	41	53	65	77	89	95	104	113
20.6	51.6							
26	39.1	38.2						
28	35.7	34.8	33.8					
32	30.3	29.8	28.8	27.9				
36	26.5	25.6	24.7	23.7	20.9			
38	24.7	23.9	23.0	22.0	20.7	17.4		
40	23.1	22.3	21.4	20.5	19.5	17.2	13.0	
55		14.8	13.9	13.0	12.1	11.7	11.0	8.5
65			10.7	9.8	8.9	8.5	7.8	7.1
75				7.5	6.6	6.2	5.5	4.8
85					4.8	4.4	3.8	3.1
95						3.0	2.4	1.7
105							1.3	

Main boom 50 m

Radius (m)	Jib length in (m)							
	41	53	65	77	89	95	104	113
21.3	48.6							
26	38.5	37.5						
30	32.3	31.3	30.4					
32	30.1	29.2	28.3	27.3				
36	26.0	25.1	24.2	23.2	20.5			
38	24.3	23.4	22.5	21.5	20.4	17.0		
40	22.7	21.9	21.0	20.0	19.1	17.0	12.9	
55		14.5	13.6	12.7	11.8	11.3	10.6	8.5
65			10.4	9.5	8.6	8.2	7.5	6.8
75				7.2	6.4	5.9	5.3	4.5
85					4.6	4.2	3.6	2.9
95						3.2	2.8	1.5
105							1.1	

Main boom 62 m

Radius (m)	Jib length in (m)							
	41	53	65	77	89	95	104	113
22.7	43.5							
28	33.7	32.7						
30	31.0	30.1	29.4					
34	26.8	25.9	24.9	23.9				
38	23.3	22.4	21.4	20.4	19.4			
40	21.8	20.9	19.9	19.0	18.0	16.2		
42	20.4	19.6	18.6	17.7	16.7	16.1	12.3	
44	19.2	18.4	17.4	16.5	15.5	15.0	12.3	9.2
60		12.0	11.2	10.3	9.3	8.9	8.2	7.4
70			8.5	7.7	6.8	6.3	5.7	4.9
85				4.9	4.1	3.7	3.1	2.3
95					2.8	2.4	1.8	1.1
100						1.8	1.2	

Main boom 74 m

Radius (m)	Jib length in (m)							
	41	53	65	77	89	95	104	113
24.2	38.4							
28	32.1	31.0						
32	27.5	26.5	25.4					
36	23.7	22.7	21.7	20.6				
40	20.7	19.7	18.7	17.7	16.7	15.2		
44	18.2	17.3	16.4	15.4	14.8	14.3	11.6	
48	16.2	15.3	14.8	13.8	12.8	12.3	11.2	8.6
55		12.9	12.0	11.0	10.0	9.6	8.9	7.8
65			9.0	8.1	7.2	6.7	6.0	5.2
75				6.0	5.1	4.7	4.0	3.2
85					4.4	3.5	3.1	2.5
95						2.3	1.9	1.2
100							1.3	

Main boom 80 m

Radius (m)	Jib length in (m)							
	41	53	65	77	89	95	104	113
24.9	36.0							
28	31.2							
32	26.7	25.7	24.6					
36	23.0	22.0	20.9	19.9				
40	20.1	19.1	18.1	17.0	16.0			
44	17.7	16.8	15.8	15.1	14.2	13.7	11.3	
48	15.7	15.1	14.3	13.2	12.2	11.7	10.8	8.3
55		12.4	11.5	10.5	9.5	9.1	8.3	7.5
65			8.6	7.7	6.8	6.3	5.6	4.8
75			6.5	5.7	4.8	4.3	3.6	2.9
85				4.1	3.2	2.8	2.1	1.4
95					2.0	1.6		
100						1.1		

Main boom 83 m

Radius (m)	Jib length in (m)							
	41	53	65	77	89	95	104	113
25.3	34.8							
28	30.7							
30	28.6	27.5						
34	24.4	23.3	22.1					
36	22.6	21.6	20.6	19.5				
40	19.7	18.8	17.7	16.7	15.6			
42	18.5	17.6	16.5	15.5	14.9	14.0		
44	17.4	16.5	15.5	14.9	13.8	13.3	11.0	
55		12.2	11.3	10.3	9.3	8.8	8.1	7.2
65			8.4	7.5	6.5	6.1	5.4	4.6
75			6.4	5.5	4.6	4.1	3.4	2.7
85				3.9	3.1	2.6	2.0	1.2
95					1.9	1.4		

TLT 10539958 - M 141906 offiziell

Counterweight 124 t 104 t 74 t

Capacities in metric tons with luffing jib (No. 2316.xx), max. 124 t counterweight + 57 t carbody counterweight. Above load charts are for reference only. For actual lift duty and complete chart with all available configurations please refer to load chart in operator's cab or manual.

Load chart - luffing jib 78° - 15°

with max. 124 t counterweight and 57 t carbody counterweight (luffing jib No. 2316.xx)
Main boom angle 75°

Main boom 44 m

Radius (m)	Jib length in (m)							
	41 t	53 t	65 t	77 t	89 t	95 t	104 t	113 t
31.9	26.8							
38	21.5	20.4						
42	18.8	17.8						
44	17.7	16.7	15.7					
46	16.7	15.7	15.1					
48	15.7	15.1	14.2	13.1				
50	15.1	14.3	13.3	12.3				
55		12.4	11.4	10.4	9.4	8.7		
65		9.5	8.6	7.6	6.7	6.2	5.5	4.7
75			6.5	5.6	4.7	4.2	3.5	2.7
85				4.1	3.2	2.7	2.0	1.3
90					2.5	2.1	1.4	
100					1.4	1.0		

Main boom 50 m

Radius (m)	Jib length in (m)							
	41 t	53 t	65 t	77 t	89 t	95 t	104 t	113 t
33.5	24.0							
38	20.4							
40	19.1	18.0						
44	16.8	15.8	15.1					
48	15.1	14.3	13.3					
50	14.5	13.5	12.5	11.4				
55	12.5	11.7	10.7	9.6	8.6			
60		10.2	9.2	8.2	7.1	6.7		
65		8.9	8.0	7.0	6.0	5.5	4.8	3.9
75			6.0	5.0	4.1	3.6	2.9	2.1
85				3.6	2.6	2.2	1.5	
90				2.9	2.0	1.6		
95					1.5	1.1		

Main boom 62 m

Radius (m)	Jib length in (m)							
	41 t	53 t	65 t	77 t	89 t	95 t	104 t	113 t
36.6	19.0							
40	16.9							
42	15.8	14.7						
44	15.1	14.1						
48	13.5	12.4	11.3					
55	11.0	10.0	8.9	7.8				
60		8.6	7.6	6.6	5.5	5.0		
65		7.5	6.5	5.5	4.4	3.9	3.2	
70		6.5	5.6	4.6	3.5	3.0	2.3	1.4
75			4.7	3.8	2.7	2.3	1.5	
80			4.0	3.1	2.1	1.6		
85				2.4	1.5	1.0		
90				1.9				

Main boom 74 m

Radius (m)	Jib length in (m)							
	41 t	53 t	65 t	77 t	89 t	95 t	104 t	113 t
39.7	14.5							
42	13.8							
44	12.9							
46	12.1	10.9						
48	11.3	10.2						
50	10.6	9.5	8.1					
55	9.1	8.1	7.0	5.6				
60	7.9	6.9	5.8	4.7	3.5			
65		5.9	4.9	3.8	2.7	2.1		
70		5.0	4.0	3.0	1.9	1.4		
75			3.3	2.3	1.2			
80			2.7	1.7				
85			2.1	1.2				

Main boom 80 m

Radius (m)	Jib length in (m)							
	41 t	53 t	65 t	77 t	89 t	95 t	104 t	113 t
41.2	12.4							
42	12.4							
44	11.6							
46	10.9							
48	10.2	9.0						
50	9.5	8.4						
55	8.2	7.1	5.9					
60	7.0	6.0	4.8	3.7				
65		5.0	4.0	2.9	1.7	1.2		
70		4.2	3.2	2.1	1.0			
75		3.5	2.6	1.5				
80			2.0					
85			1.5					

Main boom 83 m

Radius (m)	Jib length in (m)							
	41 t	53 t	65 t	77 t	89 t	95 t	104 t	113 t
42	11.4							
44	10.9							
46	10.2							
48	9.6	8.3						
50	9.0	7.8						
55	7.6	6.5	5.3					
60	6.5	5.5	4.3	3.2				
65		4.6	3.5	2.4	1.2			
70		3.8	2.8	1.7				
75		3.1	2.2	1.1				
80			1.6					
85			1.1					

TLT 10539958 - M 141906 offiziell

Counterweight 124 t 104 t 74 t

Capacities in metric tons with luffing jib (No. 2316.xx), max. 124 t counterweight + 57 t carbody counterweight. Above load charts are for reference only. For actual lift duty and complete chart with all available configurations please refer to load chart in operator's cab or manual.

Load chart - luffing jib 78° - 15°

with max. 124 t counterweight and 57 t carbody counterweight (luffing jib No. 2316.xx)

Main boom angle 65°

Main boom 44 m

Radius (m)	Jib length in (m)							
	41	53	65	77	89	95	104	113
45.3	15.5	t	t	t	t	t	t	t
46	15.2							
48	14.7							
50	13.9							
55	12.1	11.0						
60	10.5	9.6	8.5					
65		8.4	7.3					
70		7.3	6.3	5.3				
75			5.4	4.4	3.4			
80			4.7	3.7	2.7	2.2		
85				3.0	2.0	1.6		
90				2.4	1.5			
95				1.9				

Main boom 50 m

Radius (m)	Jib length in (m)							
	41	53	65	77	89	95	104	113
47.8	13.0	t	t	t	t	t	t	t
48	12.9							
50	12.5							
55	10.8	9.5						
60	9.5	8.4						
65		7.3	6.2					
70		6.3	5.3	4.2				
75		5.5	4.5	3.4				
80			3.8	2.8	1.7	1.2		
85			3.2	2.2	1.1			
90				1.6				
95				1.2				

Main boom 62 m

Radius (m)	Jib length in (m)							
	41	53	65	77	89	95	104	113
52.9	8.5	t	t	t	t	t	t	t
55	8.1							
60	7.0	5.7						
65	6.0	4.9						
70		4.2	3.0					
75		3.5	2.4	1.3				
80		2.9	1.9					
85			1.4					

Main boom 74 m

Radius (m)	Jib length in (m)							
	41	53	65	77	89	95	104	113
57.9	4.4	t	t	t	t	t	t	t
60	4.2							
65	3.5	2.2						
70	2.8	1.7						
75		1.2						

Main boom 80 m

Radius (m)	Jib length in (m)							
	41	53	65	77	89	95	104	113
60.5	2.5	t	t	t	t	t	t	t
65	2.1							
70	1.6							
75	1.1							

Main boom 83 m

Radius (m)	Jib length in (m)							
	41	53	65	77	89	95	104	113
61.7	1.6	t	t	t	t	t	t	t
65	1.4							

TLT 10539958 - M 141906 offiziell

Counterweight 124 t 104 t 74 t

Capacities in metric tons with luffing jib (No. 2316.xx), max. 124 t counterweight + 57 t carbody counterweight. Above load charts are for reference only. For actual lift duty and complete chart with all available configurations please refer to load chart in operator's cab or manual.

Load chart - luffing jib 78° - 15°

with max. 124 t counterweight and 57 t carbody counterweight (luffing jib No. 2316.xx)

Main boom angle 45°

Main boom 44 m

Radius (m)	Jib length in (m)							
	41	53	65	77	89	95	104	113
	t	t	t	t	t	t	t	t
67.6	4.7							
70	4.5							
80		2.2						
85		1.7						

Main boom 50 m

Radius (m)	Jib length in (m)							
	41	53	65	77	89	95	104	113
	t	t	t	t	t	t	t	t
71.9	2.6							
75	2.3							

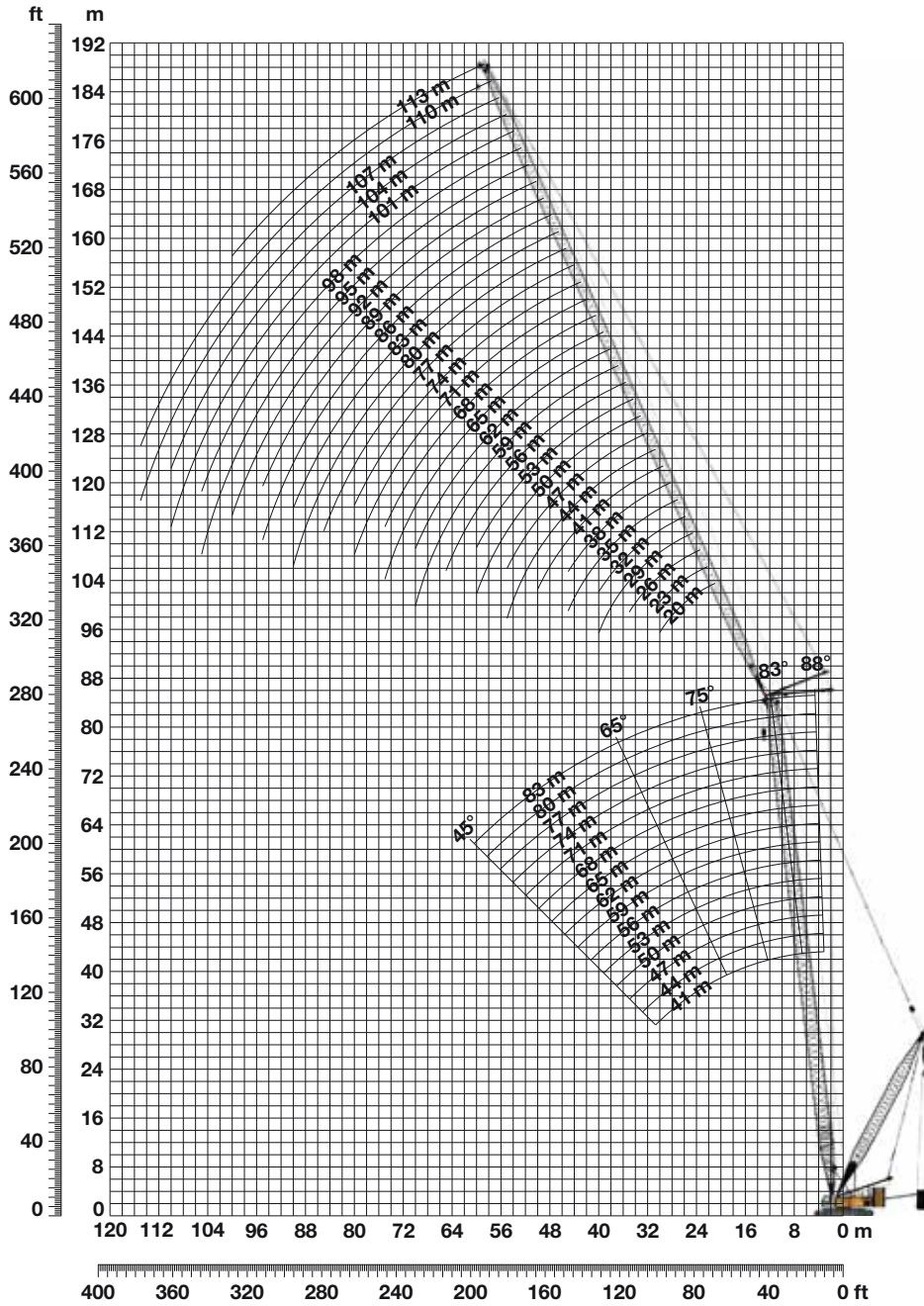
TLT 10539958 - M 141906 offiziell

Counterweight 124 t 104 t 74 t

Capacities in metric tons with luffing jib (No. 2316.xx), max. 124 t counterweight + 57 t carbody counterweight. Above load charts are for reference only. For actual lift duty and complete chart with all available configurations please refer to load chart in operator's cab or manual.

Working range - luffing jib 78° - 15°

with 124 t counterweight and 57 t carbody counterweight and max. 120 t suspended counterweight at 13 m radius (luffing jib No. 2316.xx)



Jib configuration for jib lengths (41 - 113 m)

Boom configuration (No. 2821.30) for boom lengths (41 - 110 m) - see table 1, page 10

	Length	Configuration for luffing jib lengths																								
		41	44	47	50	53	56	59	62	65	68	71	74	77	80	83	86	89	92	95	98	101	104	107	110	113
Fixed jib foot	10 m	1	1	1	1	1	1	1	1	1	1	1	1	1	1	1	1	1	1	1	1	1	1	1	1	1
Fixed jib section	3 m	1		1		1		1		1		1		1		1		1		1		1		1		1
Fixed jib section	6 m	1			1	1			1	1			1	1			1	1			1	1			1	1
Fixed jib section	12 m	1	2	2	2	2	3	3	3	3	4	4	4	4	5	5	5	5	6	6	6	6	7	7	7	7
Fixed jib head	10 m	1	1	1	1	1	1	1	1	1	1	1	1	1	1	1	1	1	1	1	1	1	1	1	1	1
Fixed jib length (m)		41	44	47	50	53	56	59	62	65	68	71	74	77	80	83	86	89	92	95	98	101	104	107	110	113

Load chart - luffing jib 78° - 15°

with 124 t counterweight and 57 t carbody counterweight and max. 120 t suspended counterweight at 13 m radius (luffing jib No. 2316.xx)
Main boom angle 88°

Main boom 44 m

Radius (m)	Jib length in (m)							
	41 t	53 t	65 t	77 t	89 t	95 t	104 t	113 t
14	84.6							
18	79.3	59.3						
19	77.6	58.4	42.9					
22	67.6	56.0	42.0	30.1				
24	61.4	54.6	41.3	30.1	22.9			
26	56.2	51.3	40.3	30.1	22.8	19.3		
28	51.2	48.1	39.5	29.8	22.2	19.0	14.9	
30	47.1	45.6	38.4	29.2	21.8	18.5	14.6	11.2
55		17.8	20.1	19.7	16.7	14.3	11.0	8.2
75				10.9	11.3	10.5	9.0	6.9
90					6.0	6.6	6.6	2.5
95						4.9	5.5	1.0
105							2.6	

Main boom 50 m

Radius (m)	Jib length in (m)							
	41 t	53 t	65 t	77 t	89 t	95 t	104 t	113 t
13.4	76.9							
16	74.8	55.2						
19	70.6	54.1	40.3					
22	64.8	51.8	39.6	29.7				
24	61.1	50.3	39.0	29.5	22.1			
26	56.8	48.4	37.8	28.8	22.1	18.8		
28	51.7	46.5	37.0	28.4	21.7	18.6	14.6	
30	47.5	45.0	36.0	27.8	21.3	18.1	14.3	11.0
55		18.1	20.2	19.8	16.6	14.1	10.8	8.1
75				11.0	11.3	10.5	9.0	6.8
90					6.2	6.7	6.6	2.6
95						5.0	5.6	1.1
105							2.7	

Main boom 62 m

Radius (m)	Jib length in (m)							
	41 t	53 t	65 t	77 t	89 t	95 t	104 t	113 t
13.9	63.0							
17	60.8	46.9						
19	58.2	46.0	35.3					
22	54.5	44.0	34.7	26.6				
24	52.1	42.7	34.0	26.4	20.2			
26	49.8	41.3	33.1	25.9	20.2	17.5		
28	47.0	39.8	32.3	25.5	19.9	17.4	13.7	
30	44.6	38.6	31.5	24.9	19.6	17.0	13.6	10.4
55		18.8	20.1	18.4	15.2	13.4	10.5	7.8
75				11.5	11.3	10.3	8.8	6.6
90					6.5	7.1	6.6	2.7
95						5.4	5.7	1.2
105							3.0	

Main boom 74 m

Radius (m)	Jib length in (m)							
	41 t	53 t	65 t	77 t	89 t	95 t	104 t	113 t
14.3	52.3							
17	50.2	39.6						
20	47.5	38.5	30.1					
22	45.4	37.4	30.0	23.5				
26	41.8	35.1	28.5	23.0	18.2	16.0		
28	39.6	33.7	27.8	22.6	17.9	15.9	12.9	
30	37.7	32.5	27.1	22.1	17.5	15.6	12.9	9.7
55		18.5	17.8	16.0	13.5	12.3	9.9	7.4
65			14.1	13.8	12.2	11.0	9.2	6.8
80				9.1	10.2	9.3	7.8	6.0
90					6.7	7.3	6.8	2.7
95						5.6	6.1	1.3
105							3.2	

Main boom 80 m

Radius (m)	Jib length in (m)							
	41 t	53 t	65 t	77 t	89 t	95 t	104 t	113 t
14.5	46.9							
17	45.7	36.5						
20	43.3	35.5	28.3					
22	41.6	34.5	28.0	22.0				
26	38.4	32.4	26.5	21.5	17.2	15.0		
28	36.4	31.1	25.8	21.1	16.8	15.0	12.3	
30	34.7	30.1	25.2	20.6	16.5	14.8	12.3	9.3
55		18.2	16.7	14.9	12.7	11.6	9.6	7.2
65			13.7	12.9	11.3	10.3	8.7	6.6
80				9.1	9.4	8.7	7.6	5.9
90					6.6	7.0	6.4	2.7
95						5.5	5.5	1.4
105							3.3	

Main boom 83 m

Radius (m)	Jib length in (m)							
	41 t	53 t	65 t	77 t	89 t	95 t	104 t	113 t
14.6	44.9							
18	43.0	35.0						
20	41.4	34.1	27.2					
24	38.2	32.1	26.3	21.3				
26	36.9	31.2	25.6	20.8	16.7	14.6		
28	35.0	29.9	24.9	20.4	16.4	14.6	12.0	
30	33.3	28.9	24.4	19.9	16.1	14.3	12.0	9.1
55		17.9	16.2	14.4	12.2	11.2	9.5	7.1
65			13.6	12.6	10.9	10.0	8.6	6.5
80				9.0	9.2	8.4	7.6	5.8
90					6.6	6.9	6.3	2.7
95						5.5	5.5	1.4
105							3.4	

TLT 10539958 - M 141906 offiziell

Suspended counterweight 120 t 100 t 80 t 60 t 20 t 0 t

Capacities in metric tons with luffing jib (No. 2316.xx), 124 t counterweight + 57 t carbody counterweight. Above load charts are for reference only. For actual lift duty and complete chart with all available configurations please refer to load chart in operator's cab or manual.

Load chart - luffing jib 78° - 15°

with 124 t counterweight and 57 t carbody counterweight and
max. 120 t suspended counterweight at 13 m radius (luffing jib No. 2316.xx)
Main boom angle 83°

Main boom 44 m

Radius (m)	Jib length in (m)							
	41	53	65	77	89	95	104	113
	t	t	t	t	t	t	t	t
20.6	81.4							
26	67.9	58.8						
28	61.4	56.7	42.1					
32	51.0	49.2	40.9	30.1				
36	43.5	42.6	38.3	29.4	20.9			
38	40.1	39.4	36.6	28.9	20.7	17.4		
42	34.7	34.5	33.4	27.8	19.9	16.8	13.0	9.7
55		22.3	22.9	21.5	17.6	14.8	11.3	8.5
80				10.7	11.3	10.5	8.7	6.7
90					8.0	8.3	7.3	3.5
95						6.6	6.7	1.9
100						4.9	5.4	
105							4.1	

Main boom 50 m

Radius (m)	Jib length in (m)							
	41	53	65	77	89	95	104	113
	t	t	t	t	t	t	t	t
21.3	77.2							
26	69.6	55.9						
30	58.1	53.3	40.1					
32	52.7	49.7	39.4	29.4				
36	44.8	43.9	37.5	28.8	20.5			
38	41.3	40.6	36.1	28.3	20.4	17.0		
42	35.7	35.2	33.7	27.2	19.6	16.6	12.8	
44	32.9	33.2	31.6	26.7	19.3	16.2	12.6	9.5
60		18.1	20.4	19.6	16.6	14.1	10.8	8.0
80				11.1	11.4	10.6	8.8	6.5
95					6.4	6.9	6.9	2.1
100						5.2	5.7	
105							4.4	

Main boom 62 m

Radius (m)	Jib length in (m)							
	41	53	65	77	89	95	104	113
	t	t	t	t	t	t	t	t
22.7	64.0							
28	59.5	47.3						
30	57.1	46.2	35.7					
34	49.6	43.5	34.7	26.8				
38	43.3	40.4	33.1	26.1	19.4			
40	40.2	37.8	32.4	25.7	19.2	16.2		
42	37.4	35.6	31.8	25.2	18.9	16.1	12.3	
44	35.2	33.8	30.7	24.7	18.6	15.8	12.3	9.2
60		19.9	21.0	19.8	16.1	13.7	10.5	7.8
85				9.6	10.7	9.8	8.1	5.9
95					7.0	7.4	7.1	2.5
100						5.8	6.2	1.1
110							3.4	

Main boom 74 m

Radius (m)	Jib length in (m)							
	41	53	65	77	89	95	104	113
	t	t	t	t	t	t	t	t
24.2	52.4							
28	50.1	40.1						
32	46.5	38.6	29.8					
36	42.2	36.4	29.4	23.6				
40	38.6	34.0	28.2	23.1	17.9	15.2		
44	34.9	31.4	26.9	22.2	17.4	15.0	11.6	
46	33.3	30.4	26.1	21.7	17.1	14.7	11.6	8.6
60		20.9	20.5	18.6	15.2	13.1	10.1	7.6
70			16.0	15.5	14.0	12.0	9.3	7.0
85				10.4	10.9	9.8	8.1	6.1
95					7.7	8.0	7.2	2.9
100						6.4	6.6	1.5
110							3.9	

Main boom 80 m

Radius (m)	Jib length in (m)							
	41	53	65	77	89	95	104	113
	t	t	t	t	t	t	t	t
24.9	47.6							
30	44.3	36.4						
32	42.7	35.7	28.6					
36	39.3	33.6	27.8	22.1				
40	36.2	31.7	26.5	21.7	16.9			
42	34.4	30.4	25.7	21.2	16.9	14.6		
44	32.8	29.3	25.1	20.8	16.6	14.5	11.3	
46	31.3	28.3	24.4	20.3	16.4	14.3	11.2	8.3
60		20.8	19.6	17.1	14.3	12.6	9.9	7.4
85				10.6	10.6	9.6	8.0	6.1
95					7.8	8.1	7.1	3.1
100						6.6	6.8	1.7
110							4.2	

Main boom 83 m

Radius (m)	Jib length in (m)							
	41	53	65	77	89	95	104	113
	t	t	t	t	t	t	t	t
25.3	44.4							
30	42.6	34.9						
34	39.6	33.6	27.4					
36	37.7	32.4	26.9	21.4				
40	34.9	30.6	25.6	21.0	16.5			
42	33.2	29.4	24.9	20.6	16.4	14.2		
44	31.6	28.3	24.3	20.2	16.2	14.2	11.0	
48	28.9	26.5	22.9	19.3	15.7	13.7	10.8	8.2
60		20.5	19.0	16.5	13.9	12.4	9.7	7.3
85				10.7	10.5	9.5	7.9	6.0
95					8.0	8.1	7.2	3.2
105						5.1	5.6	
110							4.3	

TLT 10539958 - M 141906 offiziell

Suspended counterweight **120 t** **100 t** **80 t** **60 t** **20 t** **0 t**

Capacities in metric tons with luffing jib (No. 2316.xx), 124 t counterweight + 57 t carbody counterweight. Above load charts are for reference only. For actual lift duty and complete chart with all available configurations please refer to load chart in operator's cab or manual.

Load chart - luffing jib 78° - 15°

with 124 t counterweight and 57 t carbody counterweight and max. 120 t suspended counterweight at 13 m radius (luffing jib No. 2316.xx)
Main boom angle 75°

Main boom 44 m

Radius (m)	Jib length in (m)							
	41 t	53 t	65 t	77 t	89 t	95 t	104 t	113 t
32	64.2							
38	51.5	48.0						
44	40.7	39.8	36.7					
48	35.6	34.6	33.3	27.0				
55		27.9	26.9	25.3	18.1	14.8		
60		24.1	23.8	22.4	17.4	14.6	10.9	
65		19.6	20.8	19.9	16.7	14.0	10.6	7.9
75			15.3	15.6	14.7	13.0	9.8	7.3
80				14.2	13.1	12.0	9.5	7.0
85				12.0	11.8	10.9	9.0	6.7
100					7.2	7.4	7.1	2.3
105						5.9	6.0	
115							3.6	

Main boom 50 m

Radius (m)	Jib length in (m)							
	41 t	53 t	65 t	77 t	89 t	95 t	104 t	113 t
33.5	63.9							
40	50.4	47.7						
44	43.2	41.7	36.4					
50	35.1	34.1	32.8	26.4				
55	27.6	29.3	28.1	25.4	17.8			
60		25.5	24.8	23.2	17.3	14.5		
65		21.1	21.7	20.5	16.7	13.9	10.6	7.8
70			19.2	18.3	15.3	13.4	10.1	7.5
75			16.3	16.2	14.0	12.9	9.7	7.2
90				10.6	10.3	9.8	8.3	6.4
100					7.8	7.9	7.2	2.8
105						6.5	6.4	1.2
115							4.0	

Main boom 62 m

Radius (m)	Jib length in (m)							
	41 t	53 t	65 t	77 t	89 t	95 t	104 t	113 t
36.6	60.4							
42	51.8	46.6						
48	41.8	40.5	34.6					
55	32.4	32.2	30.8	24.7				
60		27.7	26.6	24.0	16.9	13.9		
65		23.9	23.5	21.8	16.4	13.8	10.3	
70		19.6	20.6	19.7	15.9	13.3	10.0	7.4
75			18.1	17.4	15.3	12.9	9.7	7.1
80			15.3	15.5	14.4	12.5	9.3	6.9
90				12.0	11.7	10.6	8.6	6.4
105					7.2	7.4	7.0	2.2
110						6.0	6.0	
115							4.9	

Main boom 74 m

Radius (m)	Jib length in (m)							
	41 t	53 t	65 t	77 t	89 t	95 t	104 t	113 t
39.7	52.6							
46	44.5	41.1						
50	40.5	39.4	30.0					
55	36.2	34.5	29.6	23.1				
60	29.7	30.0	27.9	22.7	16.1			
65		26.2	25.1	22.0	15.9	13.4		
70		22.4	22.2	20.2	15.5	12.9	9.8	
75			19.7	18.6	15.1	12.5	9.5	7.0
85			14.2	14.8	13.6	11.9	8.9	6.5
95				11.2	11.2	10.1	8.1	6.1
105					8.3	8.3	6.9	3.1
110						6.9	6.1	1.5
120							4.5	

Main boom 80 m

Radius (m)	Jib length in (m)							
	41 t	53 t	65 t	77 t	89 t	95 t	104 t	113 t
41.3	48.6							
48	41.4	37.4						
55	35.3	34.2	28.7					
60	31.5	30.8	27.5	21.8				
65		26.9	25.0	21.2	15.6	12.9		
70		23.4	22.6	20.0	15.1	12.7	9.7	
75		15.1	20.2	18.8	14.7	12.3	9.4	6.9
85			15.1	15.2	13.6	11.7	8.9	6.4
95				11.9	11.4	10.2	8.3	6.0
105					8.8	8.8	7.3	3.7
110						7.4	7.0	2.1
115						6.0	6.0	
120							4.9	

Main boom 83 m

Radius (m)	Jib length in (m)							
	41 t	53 t	65 t	77 t	89 t	95 t	104 t	113 t
42.1	44.5							
48	40.8	35.9						
55	34.8	33.7	27.8					
60	31.3	30.3	26.8	21.2				
65		27.2	24.9	20.7	15.4	12.8		
70		24.0	22.9	19.8	15.0	12.6	9.4	
75		20.2	20.4	18.8	14.5	12.2	9.2	6.7
85			15.6	15.4	13.6	11.6	8.7	6.3
95				12.3	11.5	10.2	8.2	5.9
100					10.5	9.6	7.7	5.6
110						7.5	7.1	2.3
115							6.3	0.9
125								3.8

TLT 10539958 - M 141906 offiziell

Suspended counterweight 120 t 100 t 80 t 60 t 20 t 0 t

Capacities in metric tons with luffing jib (No. 2316.xx), 124 t counterweight + 57 t carbody counterweight. Above load charts are for reference only. For actual lift duty and complete chart with all available configurations please refer to load chart in operator's cab or manual.

Load chart - luffing jib 78° - 15°

with 124 t counterweight and 57 t carbody counterweight and
max. 120 t suspended counterweight at 13 m radius (luffing jib No. 2316.xx)
Main boom angle 65°

Main boom 44 m

Radius (m)	Jib length in (m)							
	41 t	53 t	65 t	77 t	89 t	95 t	104 t	113 t
45.4	48.7							
55	36.2	35.1						
60	30.1	30.1	28.0					
70		22.6	22.2	21.1				
75			19.6	18.6	15.6			
80			17.3	16.5	15.0	12.6		
85				14.9	14.2	12.1	9.1	
90				13.6	12.6	11.5	8.8	6.4
95				11.7	11.3	10.4	8.6	6.2
105					8.6	8.4	7.3	5.2
110						7.2	6.8	4.6
120							4.8	3.5
130								2.2

Main boom 50 m

Radius (m)	Jib length in (m)							
	41 t	53 t	65 t	77 t	89 t	95 t	104 t	113 t
47.9	44.5							
55	37.9	36.1						
60	33.3	32.3						
65		27.9	27.1					
70		24.5	23.8	21.7				
75		20.9	20.8	19.8				
80			18.5	17.6	15.2	12.3		
85			16.1	15.6	14.3	12.2	8.9	
95				12.7	11.9	10.9	8.6	6.2
110					7.9	7.8	7.1	4.9
115						6.6	6.3	4.3
120							5.4	3.9
130								2.6

Main boom 62 m

Radius (m)	Jib length in (m)							
	41 t	53 t	65 t	77 t	89 t	95 t	104 t	113 t
55	35.3							
65	29.0	28.0						
70		25.5	24.4					
75		23.3	22.3	21.2				
80		21.1	20.4	19.4				
85			18.6	17.6	14.6	11.8		
90			16.3	15.6	14.1	11.7	8.5	
95				14.5	13.2	11.5	8.5	6.0
100				12.8	11.9	10.7	8.3	5.9
115					8.1	7.9	7.1	4.7
120						6.8	6.4	4.2
125							5.4	3.8
135								2.6

Main boom 74 m

Radius (m)	Jib length in (m)							
	41 t	53 t	65 t	77 t	89 t	95 t	104 t	113 t
57.9	30.1							
70	24.2	23.1						
75		21.1	19.9					
80		19.4	18.3	17.1				
85		17.8	16.8	15.7				
90			15.4	14.6	13.5	11.3		
95			14.5	13.4	12.3	11.2	8.1	
100				12.3	11.3	10.7	8.1	5.6
105				11.4	10.3	9.8	7.9	5.6
120					7.9	7.5	6.8	4.5
125						6.8	6.1	4.0
135							4.5	3.1
140								2.5

Main boom 80 m

Radius (m)	Jib length in (m)							
	41 t	53 t	65 t	77 t	89 t	95 t	104 t	113 t
60.5	27.5							
70	22.9	21.8						
75	21.0	19.9	18.7					
85		16.8	15.7	14.8				
90			14.6	13.5	12.3			
95			13.5	12.4	11.3	10.6		
100				11.4	10.3	9.7	7.9	
105				10.5	9.4	8.9	7.8	5.5
110				9.6	8.6	8.1	7.3	5.4
120					7.1	6.7	5.9	4.7
125						6.0	5.3	4.2
135							4.2	3.4
145								2.3

Main boom 83 m

Radius (m)	Jib length in (m)							
	41 t	53 t	65 t	77 t	89 t	95 t	104 t	113 t
61.7	26.0							
70	22.3	21.1						
75	20.4	19.3						
80		17.6	16.5					
85		16.2	15.1	14.2				
95			13.0	11.9	10.7	10.2		
100			12.0	10.9	9.8	9.2	7.8	
105				10.0	8.9	8.4	7.6	5.4
110				9.2	8.1	7.6	6.8	5.3
120					6.7	6.2	5.5	4.6
130						5.1	4.4	3.5
135							3.8	3.0
145								2.1

TLT 10539958 - M 141906 offiziell

Suspended counterweight 120 t 100 t 80 t 60 t 20 t 0 t

Capacities in metric tons with luffing jib (No. 2316.xx), 124 t counterweight + 57 t carbody counterweight. Above load charts are for reference only. For actual lift duty and complete chart with all available configurations please refer to load chart in operator's cab or manual.

Load chart - luffing jib 78° - 15°

with 124 t counterweight and 57 t carbody counterweight and max. 120 t suspended counterweight at 13 m radius (luffing jib No. 2316.xx)
Main boom angle 45°

Main boom 44 m

Radius (m)	Jib length in (m)							
	41 t	53 t	65 t	77 t	89 t	95 t	104 t	113 t
67.6	26.9							
70	25.8							
80		20.8						
85		19.1						
90			16.7					
95			15.4					
100				13.5				
105				12.4				
110					10.5			
115					9.6	9.1		
120					8.4	8.0	6.9	
125						7.0	6.5	
130							5.6	4.6

Main boom 50 m

Radius (m)	Jib length in (m)							
	41 t	53 t	65 t	77 t	89 t	95 t	104 t	113 t
71.9	23.4							
75	22.1							
85		17.8						
95			14.4					
100			13.3					
105				11.3				
110				10.4				
115					8.5			
120					7.8	7.3		
125						6.7	6.0	
130						6.1	5.4	
135							4.8	4.0
140								3.5

Main boom 62 m

Radius (m)	Jib length in (m)							
	41 t	53 t	65 t	77 t	89 t	95 t	104 t	113 t
82.8	17.3							
85	16.0							
95		12.8						
100			10.5					
105			9.8					
110				7.8				
115				7.3				
120				6.6	5.4			
125					5.0	4.4		
130					4.4	3.9		
135						3.5	2.7	
140							2.3	1.4
145							1.9	

Main boom 74 m

Radius (m)	Jib length in (m)							
	41 t	53 t	65 t	77 t	89 t	95 t	104 t	113 t
88.8	11.9							
90	11.9							
95	10.9							
100		8.9						
105		8.2						
110			6.4					
115			5.8					
120				4.1				
125				3.6				
130				3.2	2.1			
135					1.7	1.2		
140					1.3			

Main boom 80 m

Radius (m)	Jib length in (m)							
	41 t	53 t	65 t	77 t	89 t	95 t	104 t	113 t
93.1	9.6							
95	9.4							
105		6.8						
110		6.1						
115			4.4					
120			4.0					
125				2.4				
130				2.0				

Main boom 83 m

Radius (m)	Jib length in (m)							
	41 t	53 t	65 t	77 t	89 t	95 t	104 t	113 t
95.2	8.4							
100	7.8							
105		5.9						
110		5.4						
115			3.7					
120			3.3					
125				1.6				
130				1.3				

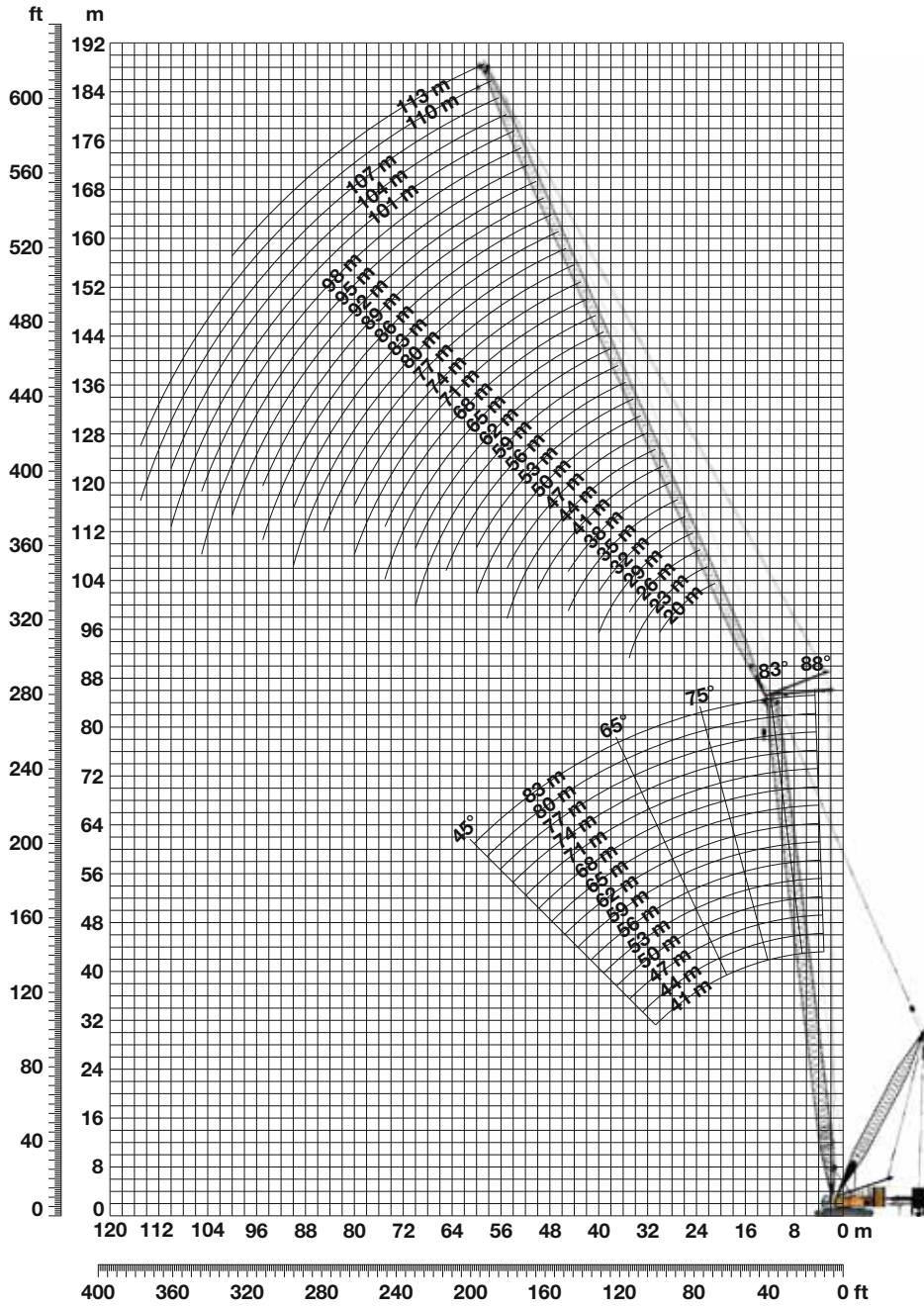
TLT 10539958 - M 141906 offiziell

Suspended counterweight 120 t 100 t 80 t 60 t 20 t 0 t

Capacities in metric tons with luffing jib (No. 2316.xx), 124 t counterweight + 57 t carbody counterweight. Above load charts are for reference only. For actual lift duty and complete chart with all available configurations please refer to load chart in operator's cab or manual.

Working range - luffing jib 78° - 15°

with 124 t counterweight and 57 t carbody counterweight and 120 t wheeled counterweight carriage at 13 m radius (luffing jib No. 2316.xx)



Jib configuration for jib lengths (41 - 113 m)

Boom configuration (No. 2821.30) for boom lengths (41 - 110 m) - see table 1, page 10

	Length	Configuration for luffing jib lengths																								
		41	44	47	50	53	56	59	62	65	68	71	74	77	80	83	86	89	92	95	98	101	104	107	110	113
Fixed jib foot	10 m	1	1	1	1	1	1	1	1	1	1	1	1	1	1	1	1	1	1	1	1	1	1	1	1	1
Fixed jib section	3 m	1		1		1		1		1		1		1		1		1		1		1		1		1
Fixed jib section	6 m	1			1	1			1	1			1	1			1	1			1	1			1	1
Fixed jib section	12 m	1	2	2	2	2	3	3	3	3	4	4	4	4	5	5	5	5	6	6	6	6	7	7	7	7
Fixed jib head	10 m	1	1	1	1	1	1	1	1	1	1	1	1	1	1	1	1	1	1	1	1	1	1	1	1	1
Fixed jib length (m)		41	44	47	50	53	56	59	62	65	68	71	74	77	80	83	86	89	92	95	98	101	104	107	110	113

Load chart - luffing jib 78° - 15°

with 124 t counterweight and 57 t carbody counterweight and
120 t wheeled counterweight carriage at 13 m radius (luffing jib No. 2316.xx)
Main boom angle 88°

Main boom 44 m

Radius (m)	Jib length in (m)							
	41 t	53 t	65 t	77 t	89 t	95 t	104 t	113 t
13.2	84.6							
16	82.8	59.7						
19	77.6	58.4	42.9					
22	67.6	56.0	42.0	30.1				
24	61.4	54.6	41.3	30.1	22.9			
26	56.2	51.3	40.3	30.1	22.8	19.3		
28	51.2	48.1	39.5	29.8	22.2	19.0	14.9	
30	47.1	45.6	38.4	29.2	21.8	18.5	14.6	11.2
55		17.8	20.1	19.7	16.7	14.3	11.0	8.2
75				10.9	11.3	10.5	9.0	6.9
90					6.0	6.6	6.6	2.5
95						4.9	5.5	1.0
105							2.6	

Main boom 50 m

Radius (m)	Jib length in (m)							
	41 t	53 t	65 t	77 t	89 t	95 t	104 t	113 t
13.4	76.9							
16	74.8	55.2						
19	70.6	54.1	40.3					
22	64.8	51.8	39.6	29.7				
24	61.1	50.3	39.0	29.5	22.1			
26	56.8	48.4	37.8	28.8	22.1	18.8		
28	51.7	46.5	37.0	28.4	21.7	18.6	14.6	
30	47.5	45.0	36.0	27.8	21.3	18.1	14.3	11.0
55		18.1	20.2	19.8	16.6	14.1	10.8	8.1
75				11.0	11.3	10.5	9.0	6.8
90					6.2	6.7	6.7	2.6
95						5.0	5.6	1.1
105							2.7	

Main boom 62 m

Radius (m)	Jib length in (m)							
	41 t	53 t	65 t	77 t	89 t	95 t	104 t	113 t
13.9	63.0							
17	60.8	46.9						
19	58.2	46.0	35.3					
22	54.5	44.0	34.7	26.6				
24	52.1	42.7	34.0	26.4	20.2			
26	49.8	41.3	33.1	25.9	20.2	17.5		
28	47.0	39.8	32.3	25.5	19.9	17.4	13.7	
30	44.6	38.6	31.5	24.9	19.6	17.0	13.6	10.4
55		18.8	20.1	18.4	15.2	13.4	10.5	7.8
75				11.5	11.3	10.3	8.8	6.6
90					6.5	7.1	6.7	2.7
95						5.4	5.8	1.2
105							3.0	

Main boom 74 m

Radius (m)	Jib length in (m)							
	41 t	53 t	65 t	77 t	89 t	95 t	104 t	113 t
14.3	52.3							
16	51.0							
19	48.3	39.1						
22	45.4	37.4	30.0	23.5				
24	43.4	36.3	29.4	23.4				
26	41.8	35.1	28.5	23.0	18.2	16.0		
28	39.6	33.7	27.8	22.6	17.9	15.9	12.9	
30	37.7	32.5	27.1	22.1	17.5	15.6	12.9	9.7
55		18.5	17.8	16.0	13.5	12.3	9.9	7.4
75				11.0	10.8	9.9	8.5	6.3
90					6.7	7.3	6.8	2.7
95						5.6	6.1	1.3
105							3.2	

Main boom 80 m

Radius (m)	Jib length in (m)							
	41 t	53 t	65 t	77 t	89 t	95 t	104 t	113 t
14.5	46.9							
17	45.7	36.5						
20	43.3	35.5	28.3					
22	41.6	34.5	28.0	22.0				
26	38.4	32.4	26.5	21.5	17.2	15.0		
28	36.4	31.1	25.8	21.1	16.8	15.0	12.3	
30	34.7	30.1	25.2	20.6	16.5	14.8	12.3	9.3
55		18.2	16.7	14.9	12.7	11.6	9.6	7.2
65			13.7	12.9	11.3	10.3	8.7	6.6
75				10.7	10.0	9.3	8.1	6.1
90					6.6	7.0	6.7	2.7
95						5.5	6.1	1.4
105							3.3	

Main boom 83 m

Radius (m)	Jib length in (m)							
	41 t	53 t	65 t	77 t	89 t	95 t	104 t	113 t
14.6	44.9							
18	43.0	35.0						
22	39.8	33.1	27.0					
24	38.2	32.1	26.3	21.3				
26	36.9	31.2	25.6	20.8	16.7	14.6		
28	35.0	29.9	24.9	20.4	16.4	14.6	12.0	
30	33.3	28.9	24.4	19.9	16.1	14.3	12.0	9.1
55		17.9	16.2	14.4	12.2	11.2	9.5	7.1
65			13.6	12.6	10.9	10.0	8.6	6.5
75				10.5	9.7	8.9	8.0	6.0
90					6.6	6.9	6.8	2.7
95						5.5	6.2	1.4
105							3.4	

TLT 10539958 - M 141906 offiziell

Capacities in metric tons with luffing jib (No. 2316.xx), 124 t counterweight + 57 t carbody counterweight. Above load charts are for reference only. For actual lift duty and complete chart with all available configurations please refer to load chart in operator's cab or manual.

Load chart - luffing jib 78° - 15°

with 124 t counterweight and 57 t carbody counterweight and
120 t wheeled counterweight carriage at 13 m radius (luffing jib No. 2316.xx)
Main boom angle 83°

Main boom 44 m

Radius (m)	Jib length in (m)							
	41 t	53 t	65 t	77 t	89 t	95 t	104 t	113 t
20.6	81.4							
24	75.5							
26	67.9	58.8						
28	61.4	56.7	42.1					
32	51.0	49.2	40.9	30.1				
36	43.5	42.6	38.3	29.4	20.9			
40	37.0	36.7	35.3	28.4	20.3	17.2	13.0	
55		22.3	22.9	21.5	17.6	14.8	11.3	8.5
70			13.7	15.0	14.2	13.0	9.9	7.4
75				13.1	12.6	11.6	9.5	7.1
90					8.0	8.3	7.3	3.5
95						6.6	6.7	1.9
105							4.1	

Main boom 50 m

Radius (m)	Jib length in (m)							
	41 t	53 t	65 t	77 t	89 t	95 t	104 t	113 t
21.3	77.2							
24	74.2							
26	69.6	55.9						
30	58.1	53.3	40.1					
32	52.7	49.7	39.4	29.4				
36	44.8	43.9	37.5	28.8	20.5			
40	38.2	37.6	34.9	27.8	20.0	17.0	12.9	
55		23.2	23.4	21.7	17.5	14.7	11.2	8.5
70			14.2	15.3	14.5	13.1	9.8	7.3
75				13.3	12.8	11.8	9.5	7.0
90					8.3	8.5	7.5	3.7
95					6.4	6.9	6.9	2.1
105							4.4	

Main boom 62 m

Radius (m)	Jib length in (m)							
	41 t	53 t	65 t	77 t	89 t	95 t	104 t	113 t
22.7	64.0							
26	61.9							
28	59.5	47.3						
32	53.8	45.0	35.4					
34	49.6	43.5	34.7	26.8				
38	43.3	40.4	33.1	26.1	19.4			
40	40.2	37.8	32.4	25.7	19.2	16.2		
42	37.4	35.6	31.8	25.2	18.9	16.1	12.3	
44	35.2	33.8	30.7	24.7	18.6	15.8	12.3	9.2
55		24.7	23.9	21.3	17.0	14.2	10.9	8.3
75				14.5	13.0	11.9	9.3	6.9
95					7.0	7.4	7.1	2.5
100						5.8	6.2	1.1

Main boom 74 m

Radius (m)	Jib length in (m)							
	41 t	53 t	65 t	77 t	89 t	95 t	104 t	113 t
24.2	52.4							
26	51.7							
30	48.1	39.6						
34	44.3	37.5	29.6					
38	40.5	35.5	29.1	23.4				
40	38.6	34.0	28.2	23.1	17.9	15.2		
44	34.9	31.4	26.9	22.2	17.4	15.0	11.6	
50	27.7	27.6	24.5	20.9	16.5	14.2	11.1	8.4
55		24.8	22.9	19.6	15.9	13.6	10.6	8.0
75				14.2	12.7	11.5	9.0	6.7
90					9.5	9.2	7.6	4.5
100						6.4	6.6	1.5
110							3.9	

Main boom 80 m

Radius (m)	Jib length in (m)							
	41 t	53 t	65 t	77 t	89 t	95 t	104 t	113 t
24.9	47.6							
28	46.1							
30	44.3	36.4						
34	41.1	34.8	28.4					
38	37.7	32.7	27.2	22.0				
40	36.2	31.7	26.5	21.7	16.9			
42	34.4	30.4	25.7	21.2	16.9	14.6		
44	32.8	29.3	25.1	20.8	16.6	14.5	11.3	
55		23.6	21.4	18.3	15.1	13.1	10.4	7.8
75			13.4	14.0	12.1	10.9	8.8	6.5
95					7.8	8.1	7.1	3.1
100						6.6	6.8	1.7
110							4.2	

Main boom 83 m

Radius (m)	Jib length in (m)							
	41 t	53 t	65 t	77 t	89 t	95 t	104 t	113 t
25.3	44.4							
28	43.7							
32	41.0	34.3						
34	39.6	33.6	27.4					
38	36.2	31.5	26.3	21.3				
40	34.9	30.6	25.6	21.0	16.5			
42	33.2	29.4	24.9	20.6	16.4	14.2		
44	31.6	28.3	24.3	20.2	16.2	14.2	11.0	
55		22.9	20.7	17.7	14.6	12.9	10.2	7.7
75			13.6	13.6	11.9	10.7	8.7	6.4
95					8.0	8.1	7.2	3.2
100						6.7	6.8	1.8
110							4.3	

TLT 10539958 - M 141906 offiziell

Capacities in metric tons with luffing jib (No. 2316.xx), 124 t counterweight + 57 t carbody counterweight. Above load charts are for reference only. For actual lift duty and complete chart with all available configurations please refer to load chart in operator's cab or manual.

Load chart - luffing jib 78° - 15°

with 124 t counterweight and 57 t carbody counterweight and
120 t wheeled counterweight carriage at 13 m radius (luffing jib No. 2316.xx)
Main boom angle 75°

Main boom 44 m

Radius (m)	Jib length in (m)							
	41 t	53 t	65 t	77 t	89 t	95 t	104 t	113 t
31.9	30.1							
34	62.0							
38	51.5	48.0						
44	40.7	39.8	36.7					
50	32.7	32.6	31.5	26.9				
55		27.9	26.9	25.3	18.1	14.8		
65		19.6	20.8	19.9	16.7	14.0	10.6	7.9
75			15.3	15.6	14.7	13.0	9.8	7.3
85				12.0	11.8	10.9	9.0	6.7
95					8.9	8.9	7.6	4.1
100					7.2	7.4	7.1	2.3
105						5.9	6.0	
115							3.6	

Main boom 50 m

Radius (m)	Jib length in (m)							
	41 t	53 t	65 t	77 t	89 t	95 t	104 t	113 t
33.5	63.9							
36	60.7							
40	50.4	47.7						
44	43.2	41.7	36.4					
48	37.4	36.3	35.0					
50	35.1	34.1	32.8	26.4				
55	27.6	29.3	28.1	25.4	17.8			
65		21.1	21.7	20.5	16.7	13.9	10.6	7.8
75			16.3	16.2	15.2	12.9	9.7	7.2
90				10.6	11.1	10.1	8.3	6.4
100					7.8	7.9	7.2	2.8
105						6.5	6.4	1.2
115							4.0	

Main boom 62 m

Radius (m)	Jib length in (m)							
	41 t	53 t	65 t	77 t	89 t	95 t	104 t	113 t
36.6	60.4							
40	54.8							
46	44.9	43.2						
48	41.8	40.5	34.6					
50	38.9	37.7	34.4					
55	32.4	32.2	30.8	24.7				
65		23.9	23.5	21.8	16.4	13.8	10.3	
75			18.1	17.4	15.3	12.9	9.7	7.1
85				14.0	12.9	11.7	9.0	6.6
95					10.4	9.7	8.0	5.7
100					8.9	8.8	7.5	3.9
110						6.0	6.0	
115							4.9	

Main boom 74 m

Radius (m)	Jib length in (m)							
	41 t	53 t	65 t	77 t	89 t	95 t	104 t	113 t
39.7	52.6							
44	46.8							
48	42.5	40.8						
50	40.5	39.4	30.0					
55	36.2	34.5	29.6	23.1				
60	29.7	30.0	27.9	22.7	16.1			
65		26.2	25.1	22.0	15.9	13.4		
70		22.4	22.2	20.2	15.5	12.9	9.8	
75			19.7	18.6	15.1	12.5	9.5	7.0
95				11.2	11.2	10.1	8.1	6.1
100					9.9	9.4	7.7	4.9
110						6.9	6.8	1.5
120							4.5	

Main boom 80 m

Radius (m)	Jib length in (m)							
	41 t	53 t	65 t	77 t	89 t	95 t	104 t	113 t
41.2	30.1							
44	45.6							
50	39.5	37.0						
55	35.3	34.2	28.7					
60	31.5	30.8	27.5	21.8				
65		26.9	25.0	21.2	15.6	12.9		
70		23.4	22.6	20.0	15.1	12.7	9.7	
75		15.1	20.2	18.8	14.7	12.3	9.4	6.9
85			15.1	15.2	13.6	11.7	8.9	6.4
95				11.9	11.4	10.2	8.3	6.0
100					10.3	9.5	7.8	5.4
110						7.4	7.0	2.1
120							4.9	

Main boom 83 m

Radius (m)	Jib length in (m)							
	41 t	53 t	65 t	77 t	89 t	95 t	104 t	113 t
43.3	43.6							
46	42.7							
48	40.7	35.9						
55	34.6	33.7	27.8					
60	31.2	30.3	26.8	21.2				
65	27.2	27.2	24.9	20.7	15.4	12.8		
75		20.2	20.4	18.8	14.5	12.2	9.2	6.7
85			15.6	15.4	13.6	11.6	8.7	6.3
95				12.3	11.5	10.2	8.2	5.9
100					10.7	9.6	7.7	5.6
110						7.5	7.1	2.3
115							6.3	0.9
125							3.8	

TLT 10539958 - M 141906 offiziell

Capacities in metric tons with luffing jib (No. 2316.xx), 124 t counterweight + 57 t carbody counterweight. Above load charts are for reference only. For actual lift duty and complete chart with all available configurations please refer to load chart in operator's cab or manual.

Load chart - luffing jib 78° - 15°

with 124 t counterweight and 57 t carbody counterweight and
120 t wheeled counterweight carriage at 13 m radius (luffing jib No. 2316.xx)
Main boom angle 65°

Main boom 44 m

Radius (m)	Jib length in (m)							
	41	53	65	77	89	95	104	113
	t	t	t	t	t	t	t	t
45.4	48.7							
48	45.7							
55	36.2	35.1						
60	30.1	30.1	28.0					
65		26.1	25.2					
70		22.6	22.2	21.1				
75			19.6	18.6	15.6			
80			17.3	16.5	15.0	12.6		
90				13.6	12.6	11.5	8.8	6.4
100					10.0	9.5	7.9	5.9
110						7.2	6.8	4.6
120							4.8	3.5
130								2.2

Main boom 50 m

Radius (m)	Jib length in (m)								
	41	53	65	77	89	95	104	113	
	t	t	t	t	t	t	t	t	
47.8	30.1								
55	37.9	36.1							
60	33.3	32.3							
65		27.9	27.1						
70		24.5	23.8	21.7					
75		20.9	20.8	19.8					
80			18.5	17.6	15.2	12.3			
85			16.1	15.6	14.3	12.2	8.9		
90				14.5	13.3	11.8	8.8	6.3	
100					10.7	9.9	8.1	6.0	
110						7.9	7.8	7.1	4.9
120								5.4	3.9
130									2.6

Main boom 62 m

Radius (m)	Jib length in (m)								
	41	53	65	77	89	95	104	113	
	t	t	t	t	t	t	t	t	
52.9	30.1								
60	31.8	30.7							
65	29.0	28.0							
70		25.5	24.4						
75		23.3	22.3	21.2					
80		21.1	20.4	19.4					
85			18.6	17.6	14.6	11.8			
90			16.3	15.6	14.1	11.7	8.5		
100				12.8	11.9	10.7	8.3	5.9	
105					10.8	9.8	7.9	5.7	
110						9.4	9.1	7.4	5.3
120							6.8	6.4	4.2
135									2.6

Main boom 74 m

Radius (m)	Jib length in (m)								
	41	53	65	77	89	95	104	113	
	t	t	t	t	t	t	t	t	
57.9	30.1								
65	26.5	25.3							
70	24.2	23.1							
75		21.1	19.9						
80		19.4	18.3	17.1					
85		17.8	16.8	15.7					
90			15.4	14.6	13.5	11.3			
95			14.5	13.4	12.3	11.2	8.1		
100				12.3	11.3	10.7	8.1	5.6	
110					9.5	9.0	7.7	5.5	
120						7.9	7.5	6.8	4.5
130								5.5	3.7
140									2.5

Main boom 80 m

Radius (m)	Jib length in (m)							
	41	53	65	77	89	95	104	113
	t	t	t	t	t	t	t	t
60.5	27.5							
65	25.2							
70	22.9	21.8						
75	21.0	19.9	18.7					
80		18.2	17.1					
85		16.8	15.7	14.8				
90			14.6	13.5	12.3			
95			13.5	12.4	11.3	10.6		
100				11.4	10.3	9.7	7.9	
110				9.6	8.6	8.1	7.3	5.4
120					7.1	6.7	5.9	4.7
130							4.7	3.8
145								2.3

Main boom 44 m

Radius (m)	Jib length in (m)								
	41	53	65	77	89	95	104	113	
	t	t	t	t	t	t	t	t	
61.7	26.0								
65	24.4								
70	22.3	21.1							
75	20.4	19.3							
80		17.6	16.5						
85		16.2	15.1	14.2					
90			14.1	13.0	11.8				
95			13.0	11.9	10.7	10.2			
100				12.0	10.9	9.8	9.2	7.8	
110					9.2	8.1	7.6	6.8	5.3
120						6.7	6.2	5.5	4.6
130							5.1	4.4	3.5
145									2.1

TLT 10539958 - M 141906 offiziell

Capacities in metric tons with luffing jib (No. 2316.xx), 124 t counterweight + 57 t carbody counterweight. Above load charts are for reference only. For actual lift duty and complete chart with all available configurations please refer to load chart in operator's cab or manual.

Load chart - luffing jib 78° - 15°

with 124 t counterweight and 57 t carbody counterweight and
120 t wheeled counterweight carriage at 13 m radius (luffing jib No. 2316.xx)
Main boom angle 45°

Main boom 44 m

Radius (m)	Jib length in (m)							
	41 t	53 t	65 t	77 t	89 t	95 t	104 t	113 t
67.6	26.9							
70	25.8							
80		20.8						
85		19.1						
90			16.7					
95			15.4					
100				13.5				
105				12.4				
115					9.6	9.1		
120					8.4	8.0	6.9	
125						7.0	6.5	
130							5.6	4.6
140								3.2

Main boom 50 m

Radius (m)	Jib length in (m)							
	41 t	53 t	65 t	77 t	89 t	95 t	104 t	113 t
71.9	23.4							
75	22.1							
85		17.8						
95			14.4					
100			13.3					
105				11.3				
110				10.4				
115					8.5			
120					7.8	7.3		
125						6.7	6.0	
130						6.1	5.4	
135							4.8	4.0
145								3.0

Main boom 62 m

Radius (m)	Jib length in (m)							
	41 t	53 t	65 t	77 t	89 t	95 t	104 t	113 t
80.3	17.3							
85	16.0							
95		12.8						
100			10.5					
105			9.8					
110				7.8				
115				7.3				
120				6.6	5.4			
125					5.0	4.4		
130					4.4	3.9		
135						3.5	2.7	
140							2.3	1.4
145							1.9	

Main boom 74 m

Radius (m)	Jib length in (m)							
	41 t	53 t	65 t	77 t	89 t	95 t	104 t	113 t
88.8	11.9							
90	11.9							
95	10.9							
100		8.9						
105		8.2						
110			6.4					
115			5.8					
120				4.1				
125				3.6				
130				3.2	2.1			
135					1.7	1.2		
140					1.3			

Main boom 80 m

Radius (m)	Jib length in (m)							
	41 t	53 t	65 t	77 t	89 t	95 t	104 t	113 t
93.1	9.6							
95	9.4							
105		6.8						
110		6.1						
115			4.4					
120			4.0					
125				2.4				
130				2.0				

Main boom 83 m

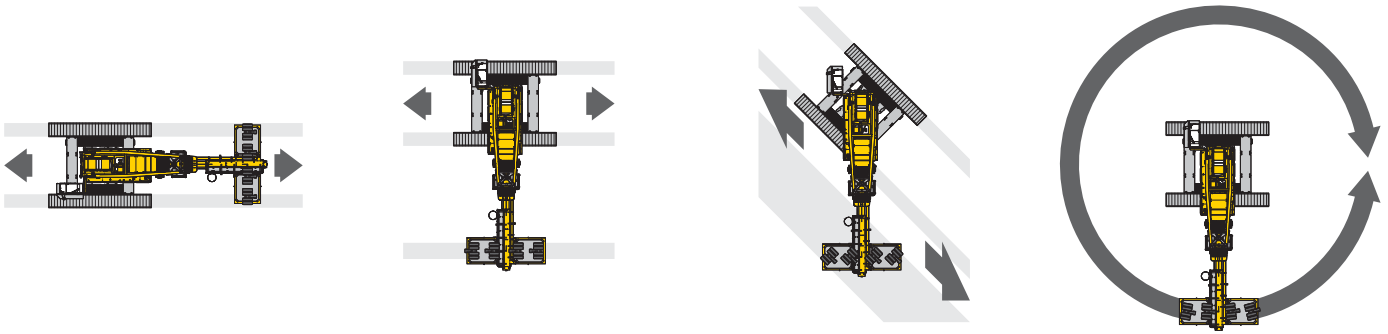
Radius (m)	Jib length in (m)							
	41 t	53 t	65 t	77 t	89 t	95 t	104 t	113 t
95.2	8.4							
100	7.8							
105		5.9						
110		5.4						
115			3.7					
120			3.3					
125				1.6				
130				1.3				

TLT 10539958 - M 141906 offiziell

Capacities in metric tons with luffing jib (No. 2316.xx), 124 t counterweight + 57 t carbody counterweight. Above load charts are for reference only. For actual lift duty and complete chart with all available configurations please refer to load chart in operator's cab or manual.

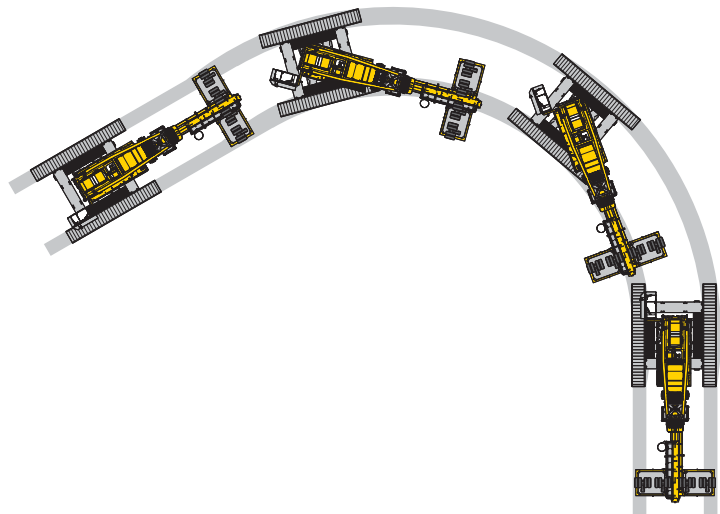
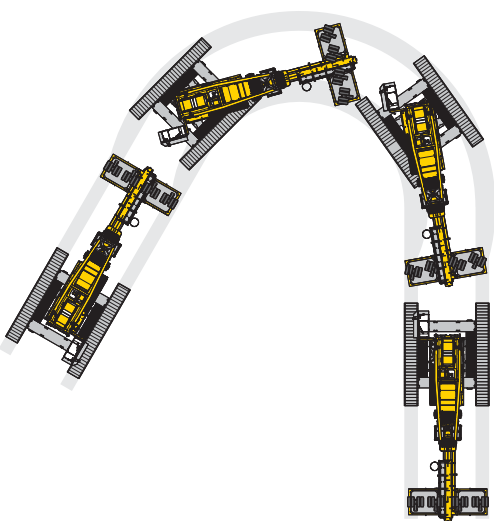
Drive options

Wheeled counterweight carriage

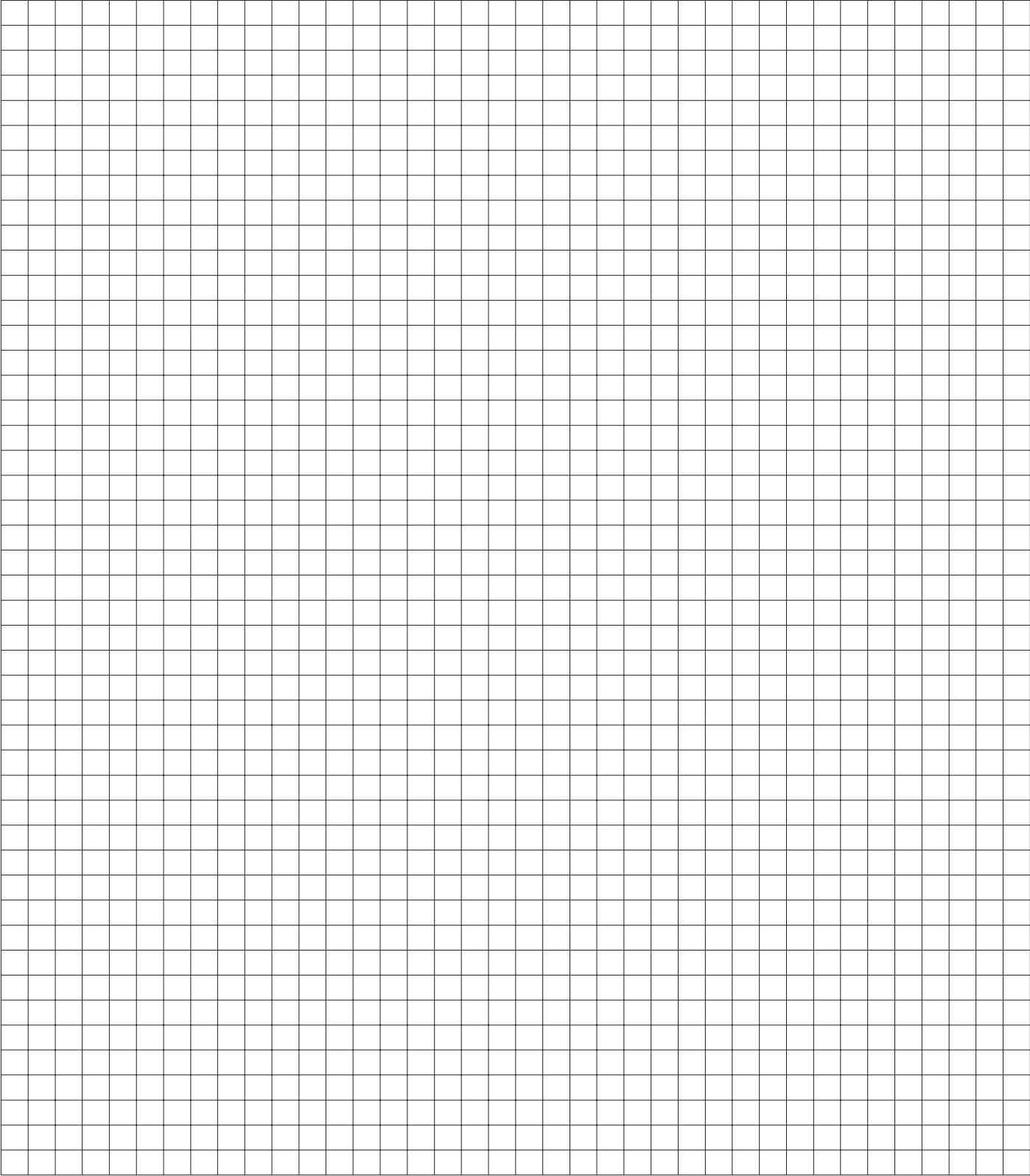


Carriage with steerable axles

Carriage with blocked steering axle



Notice



Liebherr-Werk Nenzing GmbH

Dr. Hans Liebherr Str. 1, 6710 Nenzing/Austria
Tel.: +43 50809 41-473, Fax: +43 50809 41-499
crawler.crane@liebherr.com, www.liebherr.com
facebook.com/LiebherrConstruction