

EN

---

# LR 1110

---

LR 1001.02  
[www.liebherr.com](http://www.liebherr.com)

## LIEBHERR

Crawler cranes



# Concept and characteristics



## LR 1110 Standard

- Excellent lifting capacities thanks to optimized distribution of forces
- New cabin with improved and ergonomic operating concept
- Convenient ladder to access the cabin
- Optimized air-conditioning and airflow in the cabin
- Catwalks and optional railings on uppercarriage and cabin
- Transport possible with mounted boom foot and crawlers
- Foldable catwalks remain with the machine during transportation
- Optional railings can be disassembled in a few steps using pin connections

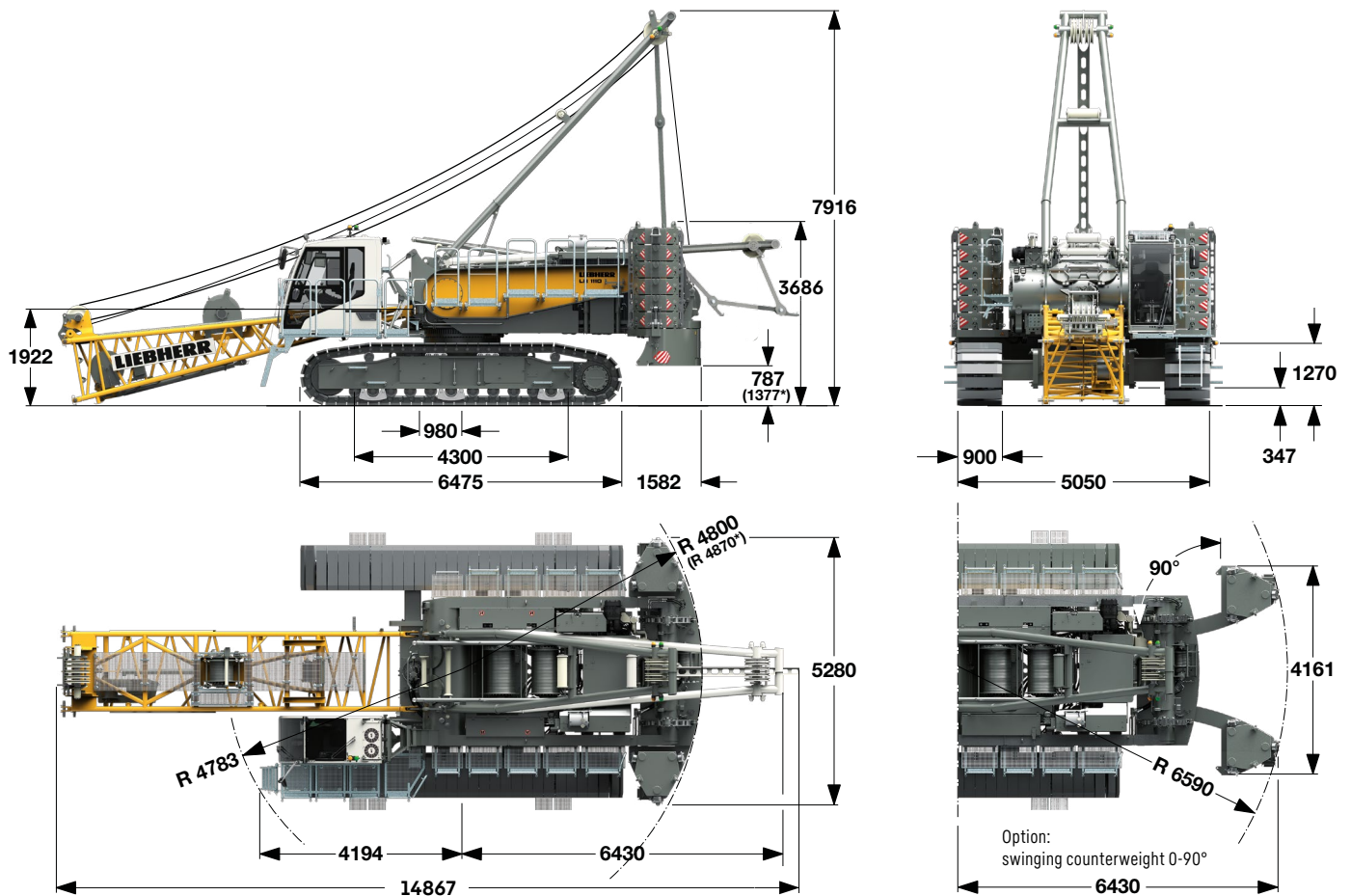


### **Option: LR 1110 with swinging counterweight**

- Up to 20% increase in lifting capacities where tilting is the limiting factor
- Larger radii thanks to improved stability
- Function of swinging counterweight: the rear counterweight splits in the centre and is swung backwards to a max. angle of 90°. The counterweight can adopt any position within this angle range. The optimized lifting capacities are calculated online in real time via the LMI system and displayed in the operator's cab.
- Easy and quick adaptation of the counterweight to the lifting requirements
- Swinging counterweight requires less counterweight – swinging back leads to improved ground pressure and similar lifting capacities to those with full counterweight in standard position can be achieved.
- Swinging the counterweight back makes the machine narrower – this allows the machine to pass through narrow spaces.
- For increased lifting capacities the swinging counterweight can also be added to other LR 1110 with standard counterweight

# Dimensions

## Basic machine with undercarriage



\* with standard counterweight

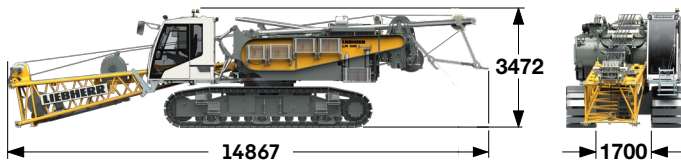
### Remarks

- The load capacities stated are valid for lifting operation only (corresponding with crane classification according to ISO 4301-1, crane group A1).
- Machine is standing on firm, horizontal ground.
- The weight of the lifting device (pulley block, hoist ropes, shackles, etc.) must be deducted from the load capacity.
- Additional equipment on boom (e.g. walkways) must be deducted from the load capacity.
- The max. admissible wind speed can be preselected in the LML software and referred to in the load chart.
- Working radii are measured from centre of swing ring and under load.
- The lifting capacities are valid for 360 degrees of swing.
- Calculation of stability under load is based on ISO 4305 Table 1+2+3, tipping angle 4°.
- The steel structures are calculated according to EN 13001-1; EN 13001-2.
- Weights may vary depending on the delivered configuration of the machine, filling level of the tanks, as well as generally valid tolerances.
- The illustrations in this brochure may include options which are not within the standard scope of supply of the machine.



# Transport dimension and weights

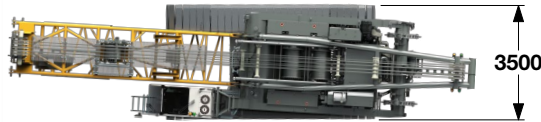
## Basic machine and main boom 1512.xx



### Basic machine

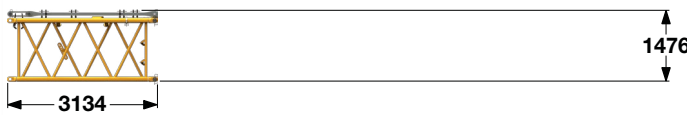
Width	mm	3500
Weight without hoist rope	kg	57000
Weight of hoist ropes	kg/m	3.42

with A-frame, winches 1 + 2 (2x 120kN), with boom foot, with crawler side frames, without rear counterweight, without carbody counterweight



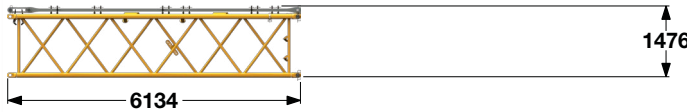
### Boom sections 3 m (No. 1512.22)

Width	mm	1610
Weight including boom pendants	kg	471
Weight including boom and jib pendants	kg	537



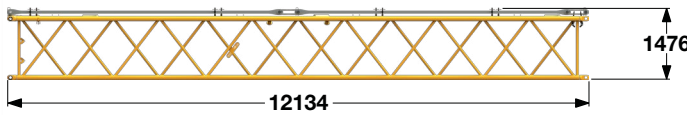
### Boom section 6 m (No. 1512.22)

Width	mm	1610
Weight including boom pendants	kg	760
Weight including boom and jib pendants	kg	870



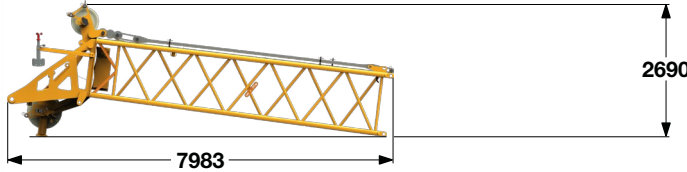
### Boom section 12 m (No. 1512.22)

Width	mm	1610
Weight including boom pendants	kg	1392
Weight including boom and jib pendants	kg	1612

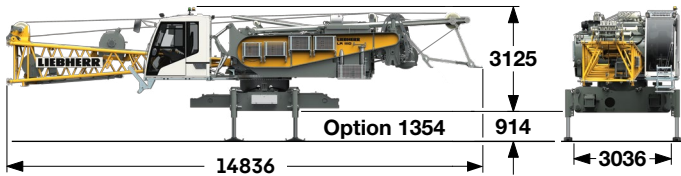


### Boom head 7 m (No. 1512.22)

Width	mm	1819
Weight including boom pendants	kg	2190



## Transport option – basic machine and crawler side frames



### Basic machine

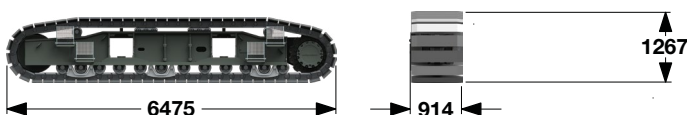
Width	mm	3500
Weight without hoist rope	kg	37500
Weight of hoist ropes	kg/m	3.42

with A-frame, winches 1 + 2 (2x 120kN), with boom foot, without crawler side frames, without rear counterweight, without carbody counterweight

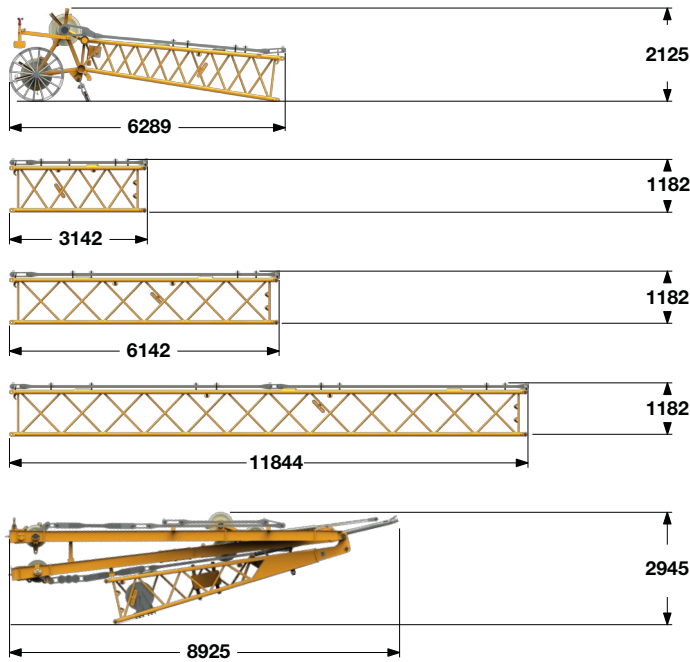


### Crawler side frame (2x)

Flat track pads	mm	900
Width	mm	914
Weight	kg	10200



## Luffing jib 1309.xx



### Jib head 5.5 m (No. 1309.22)

Width	mm	1392
Weight including pendants	kg	1115

### Jib section 3 m (No. 1309.20)

Width	mm	1392
Weight including pendants	kg	302

### Jib section 6 m (No. 1309.20)

Width	mm	1390
Weight including pendants	kg	510

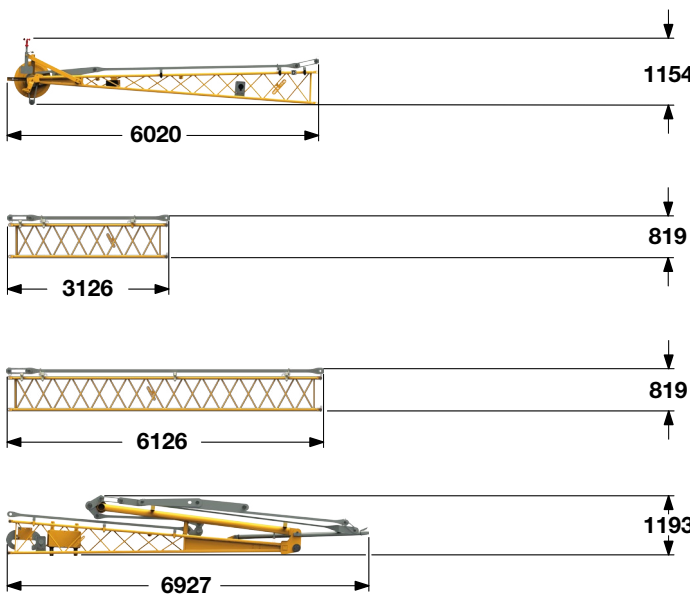
### Jib section 11.7 m (No. 1309.20)

Width	mm	1390
Weight including pendants	kg	945

### Jib foot with A-frames 5.5 m (No. 1309.22)

Width	mm	1624
Weight including pendants	kg	4183

## Fixed jib 0806.xx



### Jib head 5.5 m (No. 0806.16)

Width	mm	920
Weight including pendants	kg	424

### Jib section 3 m (No. 0806.15)

Width	mm	930
Weight including pendants	kg	141

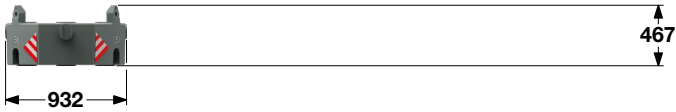
### Jib section 6 m (No. 0806.15)

Width	mm	928
Weight including pendants	kg	250

### Jib foot with A-frame 5.5 m (No. 0806.20)

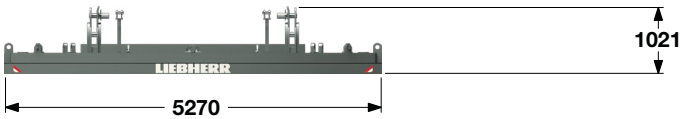
Width	mm	1800
Weight including pendants	kg	1237

## Counterweight



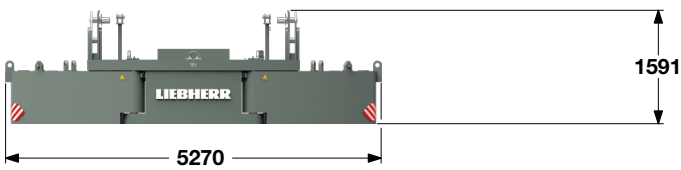
### Counterweight (12x)

Width	mm	945
Weight	kg	1500



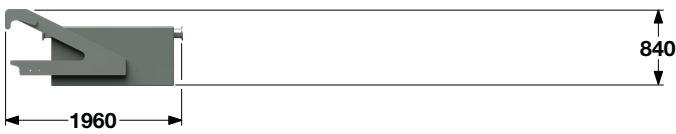
### Standard counterweight (1x)

Width	mm	1475
Weight	kg	16000



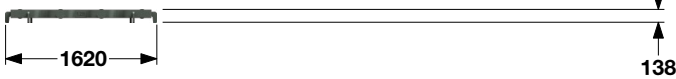
### Swinging counterweight option (1x)

Width	mm	1474
Weight	kg	16000



### Carbody counterweight (2x)

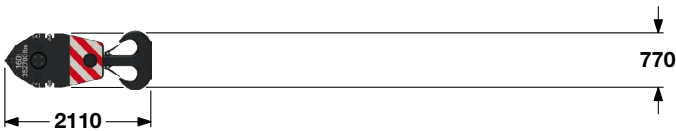
Standard		
Width	mm	1640
Weight	kg	7500



### Carbody counterweight (2x)

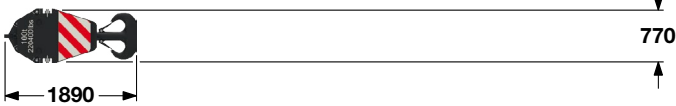
Standard		
Width	mm	1530
Weight	kg	1250

## Pulley block with additional weights / load hooks



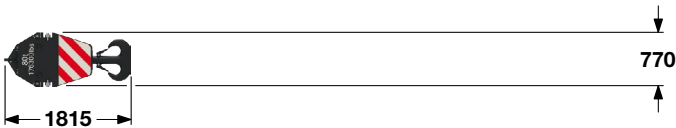
### 160 t pulley block - 7 pulleys

Width	mm	885
Weight	kg	1500/2250/3000



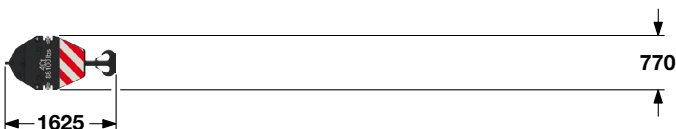
### 100 t pulley block - 5 pulleys

Width	mm	745
Weight	kg	1300/1800/2300



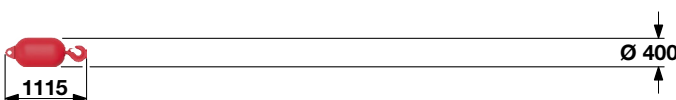
### 80 t pulley block - 3 pulleys

Width	mm	565
Weight	kg	1000/1500/2000



### 40 t pulley block - 1 pulley

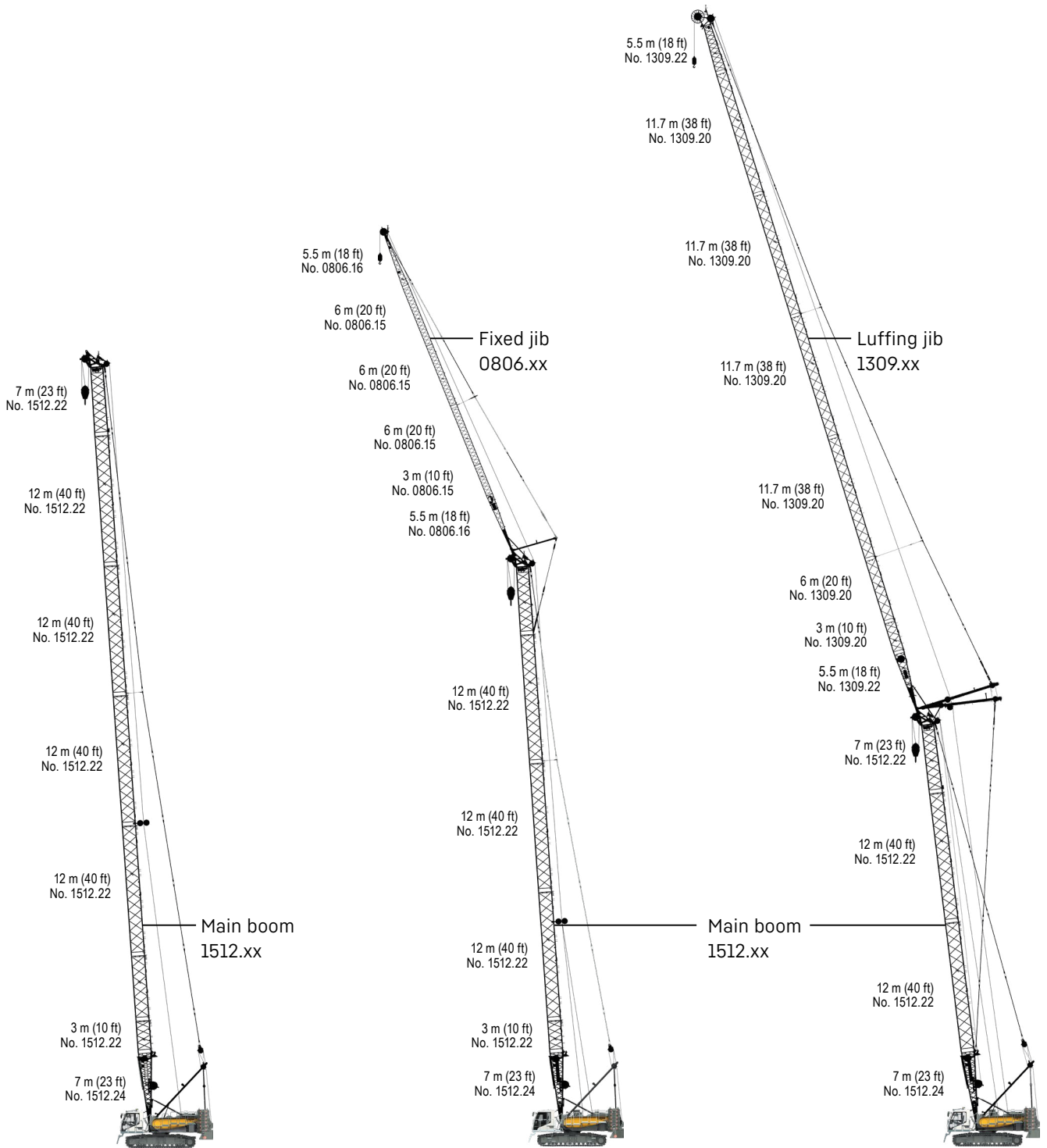
Width	mm	490
Weight	kg	700/1100/1500



### 12.5 t load hook

Width	mm	400
Weight	kg	600

# Boom combinations



## Main boom

Mode 1	
<b>Max. length</b>	
1512.xx	m 71

## Main boom + fixed jib

Mode 3	
<b>Max. combination</b>	
1512.xx	53
0806.xx	32
<b>Total length</b>	85

## Main boom + luffing jib

Mode 4		
<b>Max. combination</b>		
1512.xx	m 38.0	41.0
1309.xx	m 66.8	57.8
<b>Total length</b>	m 104.8	98.8



# Technical description



## Diesel engine

<b>Power rating according to ISO 9249</b>	230 kW (308 hp) at 1700 rpm
<b>Engine type</b>	Liebherr D 944 A7 SCR
<b>Fuel tank capacity</b>	800 l with continuous level indicator and reserve warning
<b>Exhaust certification</b>	97/68 EC Stage IV; EPA/CARB Tier 4f



## Noise measurement data and vibration

<b>Noise emission</b>	according to 2000/14/EC directive	
<b>Emission sound pressure level L<sub>PA</sub></b>	71 dB(A)	(in the cabin)
<b>Guaranteed sound power level L<sub>WA</sub></b>	108 dB(A)	(of the machine)
<b>Vibration transmitted to the machine operator</b>	< 2.5 m/s <sup>2</sup>	(to the hand-arm system)
	< 0.5 m/s <sup>2</sup>	(to the whole body)



## Hydraulic system

<b>Hydraulic pumps</b>	double axial displacement pump in open loop hydraulic system allows all functions to be operated simultaneously automatic working pressure cut-off to minimize peak pressure	
<b>Hydraulic oil tank capacity</b>	685 l	
<b>Max. working pressure</b>	350 bar	
<b>Hydraulic oil</b>	electronic monitoring of alle filters use of synthetic environmentally friendly oil	



## Control

<b>Control system</b>	includes all control and monitoring functions, designed to withstand extreme environmental conditions and heavy construction tasks
<b>Display</b>	high resolution monitor in the operator's cabin, clear display of complete machine operating data, warnings and failure indications in the required language
<b>Operation</b>	several movements can be performed simultaneously thanks to electro-hydraulic proportional control, all categories of loads can be positioned with utmost precision



## Crawlers

<b>Drive system</b>	with fixed axial piston hydraulic motors
<b>Crawler side frames</b>	maintenance-free, with hydraulic chain tensioning device
<b>Brake</b>	hydraulically released, spring-loaded multi-disc holding brake
<b>Drive speed</b>	0-2.8 km/h
<b>Flat track pads</b>	width 900 mm



## Swing gear

<b>Drive system</b>	with fixed axial piston hydraulic motors, planetary gearbox, pinion
<b>Swing ring</b>	roller bearing with external teeth
<b>Brake</b>	hydraulically released, spring-loaded multi-disc holding brake
<b>Swing speed</b>	0-2.1 rpm continuously variable
<b>Speed control</b>	both swing modes are possible - speed control or free swing for speed control: a multi-disc holding brake locks automatically at zero swing motion.



## Hoisting gear

<b>Standard crane winches 1 + 2</b>	Internal low-maintenance planetary gearbox in oil bath, load support by the hydraulic system, spring-loaded, multi-disc holding brake, pressure controlled, variable flow hydraulic motors for the main winches, full utilisation of engine power as the winch speed is automatically adjusted to suit the respective line pull
<b>Line pull in the 4<sup>th</sup> layer</b>	120 kN
<b>Rope diameter</b>	26 mm
<b>Drum diameter</b>	580 mm
<b>Rope speed</b>	0-136 m/min
<b>Rope capacity in 4 layers</b>	256 m
<b>Option - winch with free fall</b>	Free fall: clutch and braking functions are provided by the service brake (low wear and maintenance-free multi-disc brake in compact design)



## Boom/jib luffing winches

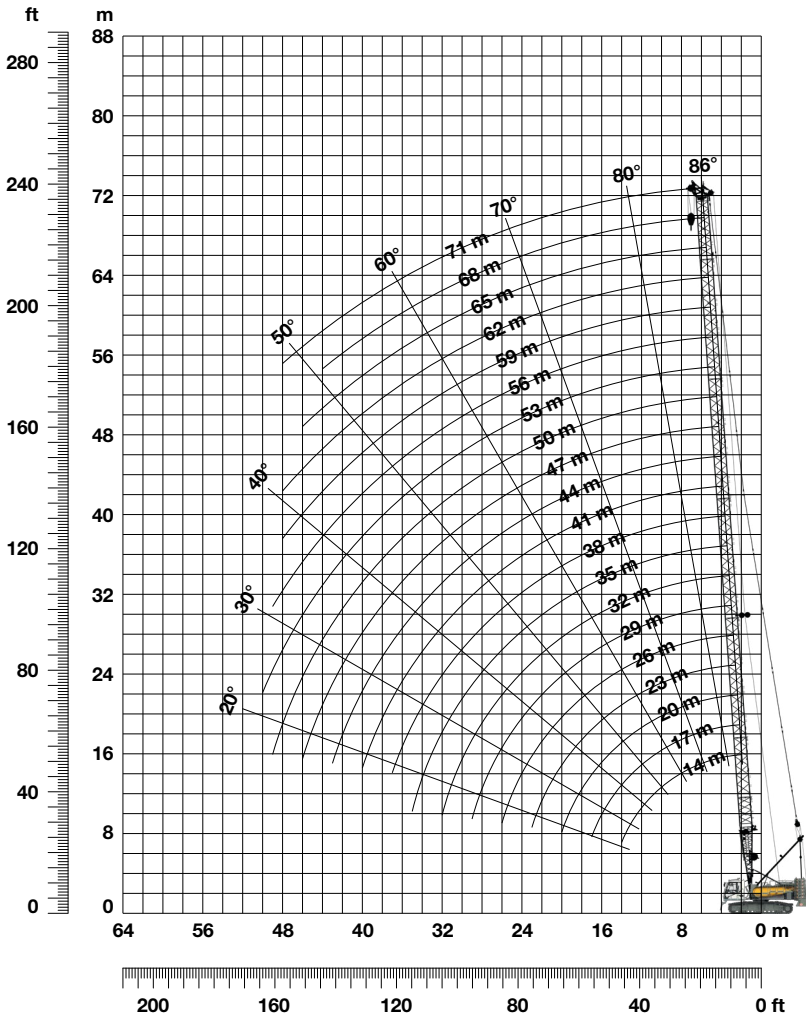
<b>Main boom</b>	
<b>Line pull</b>	116.3 kN
<b>Rope diameter</b>	20 mm
<b>Boom luffing</b>	15-86° in 44 s
<b>Jib</b>	
<b>Line pull</b>	82 kN
<b>Rope diameter</b>	20 mm
<b>Jib luffing</b>	15-78° in 46 s

## Operating weight

<b>Composition of operating weight</b>	basic machine with crawlers winches 1 + 2, A-frame 14 m main boom, consisting of boom foot (7 m) and boom head (7 m) 34 t rear counterweight 17.5 t carbody counterweight 100 t pulley block
<b>Total weight</b>	approx. 115.6 t

# Main boom 1512.xx

## Boom lengths 14-71 m



**Auxiliary jib 36 t** (Option)

The maximum capacity of the auxiliary jib is 36 t. The corresponding load chart is programmed in the LML system.

### Main boom configuration 1512.xx

Boom section	Amount of boom sections									
	14	17	20	23	26	29	32	35	38	41
Boom foot 7m	1	1	1	1	1	1	1	1	1	1
Boom section 3m		1		1		1		1		1
Boom section 6m			1	1			1	1		
Boom section 12m					1	1	1	1	2	2
Boom head 7m	1	1	1	1	1	1	1	1	1	1
<b>Boom length [m]</b>	<b>14</b>	<b>17</b>	<b>20</b>	<b>23</b>	<b>26</b>	<b>29</b>	<b>32</b>	<b>35</b>	<b>38</b>	<b>41</b>
Auxiliary jib	✓	✓	✓	✓	✓	✓	✓	✓	✓	✓
Boom foot 7m	1	1	1	1	1	1	1	1	1	1
Boom section 3m		1		1		1		1		1
Boom section 6m	1	1			1	1			1	1
Boom section 12m	2	1	3	3	3	3	4	4	4	4
Boom head 7m	1	1	1	1	1	1	1	1	1	1
<b>Boom length [m]</b>	<b>44</b>	<b>47</b>	<b>50</b>	<b>53</b>	<b>56</b>	<b>59</b>	<b>62</b>	<b>65</b>	<b>68</b>	<b>71</b>
Auxiliary jib	✓	✓	✓							

# Load capacities with main boom

Load capacities in [t] with 34 t standard counterweight and 17.5 t carbody counterweight

Radius [m]	Boom length [m]																			
	14	17	20	23	26	29	32	35	38	41	44	47	50	53	56	59	62	65	68	71
3	115.5																			
4	113.1	111.9	96.2	91.7	86.3	82.1														
5	93.1	88.1	83.6	79.5	75.9	72.4	67.4	60.8	53.5	48.3	41.9									
6	74.0	70.6	67.6	64.8	62.3	59.9	57.6	55.5	50.5	46.1	40.8	40.6	34.3	30.7	27.2					
7	61.2	58.8	56.6	54.6	52.7	50.9	49.2	47.5	46.0	43.8	39.0	39.3	33.2	30.0	26.8	24.4	21.8	19.3	17.6	16.2
8	50.6	50.3	48.6	47.0	45.6	44.1	42.8	41.5	40.3	39.1	36.8	36.9	32.3	29.2	25.9	23.6	21.2	18.9	17.4	16.1
9	42.8	42.8	42.5	41.2	40.1	38.9	37.8	36.7	35.7	34.7	33.8	32.8	31.3	28.3	25.2	23.0	20.7	18.4	16.9	15.6
10	37.0	37.0	36.9	36.6	35.7	34.7	33.8	32.8	32.0	31.1	30.3	29.5	28.8	27.5	24.4	22.2	20.2	18.0	16.6	15.1
12	28.9	28.9	28.9	28.8	28.7	28.4	27.7	27.0	26.3	25.7	25.1	24.4	23.9	23.3	22.7	21.0	19.3	17.1	15.7	14.3
14	23.5	23.5	23.5	23.4	23.4	23.3	23.2	22.7	22.2	21.7	21.2	20.7	20.2	19.7	19.0	18.4	17.6	16.5	15.0	13.6
16		19.6	19.6	19.6	19.5	19.4	19.3	19.2	19.1	18.6	18.2	17.7	17.1	16.6	16.0	15.5	14.8	14.2	13.6	13.0
20			14.5	14.5	14.4	14.3	14.2	14.1	14.0	13.9	13.7	13.3	12.8	12.3	11.9	11.5	10.9	10.4	9.9	9.4
22				12.7	12.7	12.5	12.5	12.3	12.3	12.1	12.0	11.7	11.3	10.9	10.5	10.0	9.5	9.1	8.6	8.1
26					10.0	9.9	9.8	9.7	9.6	9.5	9.4	9.2	8.9	8.5	8.2	7.8	7.4	7.0	6.5	6.1
28						8.9	8.8	8.7	8.6	8.5	8.3	8.2	8.0	7.6	7.3	6.9	6.5	6.1	5.8	5.3
32							7.1	7.0	6.9	6.8	6.7	6.5	6.5	6.2	5.9	5.5	5.2	4.8	4.5	4.1
34								6.3	6.3	6.1	6.0	5.9	5.8	5.6	5.3	5.0	4.6	4.3	3.9	3.6
38									5.1	5.0	4.9	4.7	4.6	4.5	4.4	4.0	3.7	3.4	3.1	2.7
40										4.5	4.4	4.3	4.2	4.0	3.9	3.6	3.3	3.0	2.7	2.4
44											3.6	3.4	3.3	3.2	3.1	2.9	2.7	2.4	2.1	
46												3.1	3.0	2.9	2.7	2.6	2.4	2.1		
48													2.7	2.5	2.4	2.3	2.2			
50														2.2	2.1					

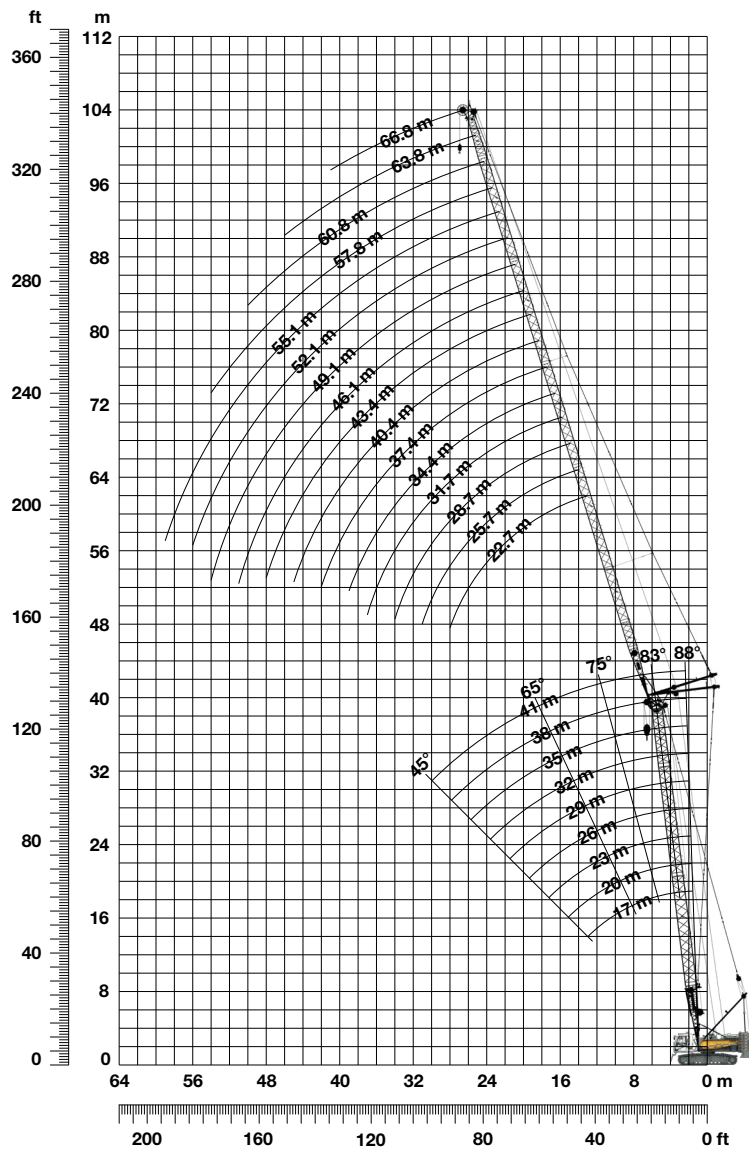
Load capacities in [t] with 34 t swinging counterweight 90° and 17.5 t carbody counterweight

Radius [m]	Boom length [m]																			
	17	20	23	26	29	32	35	38	41	44	47	50	53	56	59	62	65	68	71	
6.9																				16.2
7																				16.2
8																				16.1
9															23.6	21.2	18.9	17.4	16.1	
10															23.0	20.7	18.4	16.9	15.6	
12															22.2	20.2	18.0	16.6	15.1	
14															21.0	19.3	17.1	15.7	14.3	
16															20.7	18.4	16.5	15.0	13.6	
18															19.7	18.4	16.5	15.0	13.6	
20															19.7	18.4	16.5	15.0	13.6	
22															18.7	18.1	17.2	15.5	14.2	13.0
26															18.1	17.2	15.5	14.2	13.0	
28															18.1	17.2	15.5	14.2	13.0	
32															18.1	17.2	15.5	14.2	13.0	
34															18.1	17.2	15.5	14.2	13.0	
38															18.1	17.2	15.5	14.2	13.0	
40															18.1	17.2	15.5	14.2	13.0	
44															18.1	17.2	15.5	14.2	13.0	
46															18.1	17.2	15.5	14.2	13.0	
48															18.1	17.2	15.5	14.2	13.0	
50															18.1	17.2	15.5	14.2	13.0	
55															18.1	17.2	15.5	14.2	13.0	

TLT 11943069 - M00000 V7. Above load charts are for reference only. For actual lift duty please refer to load chart in operator's cabin or manual. Otherwise we recommend you to plan your lifting job using Crane Planner 2.0.

# Luffing jib 1309.xx

Jib lengths 22.7-66.8 m, standard counterweight



## Jib configuration 1309.xx

Jib section	Amount of jib sections															
	1	1	1	1	1	1	1	1	1	1	1	1	1	1	1	1
Jib foot 5.5m	1															
Jib section 3m		1														
Jib section 6m			1													
Jib section 11.7m	1	1	1	1	2	2	2	2	3	3	3	3	4	4	4	4
Jib head 5.5m	1	1	1	1	1	1	1	1	1	1	1	1	1	1	1	1
Jib length [m]	22.7	25.7	28.7	31.7	34.4	37.4	40.4	43.4	46.1	49.1	52.1	55.1	57.8	60.8	63.8	66.8

For main boom configuration please refer to the table on page 10.

# Load capacities with luffing jib

Load capacities in [t] with 17m main boom 88°, standard counterweight

Radius [m]	Jib length [m]							
	22.7	31.7	37.4	43.4	49.1	55.1	60.8	66.8
7.7	34.8							
10	27.4	24.5						
11	25.1	22.4	20.3					
12	22.7	20.8	19.2	15.7				
14	19.5	18.0	16.7	14.9	12.7			
15	18.0	16.6	15.6	14.4	12.3	9.7		
16	16.7	15.5	14.7	13.4	12.1	9.4	8.1	
17	15.7	14.6	13.8	12.7	11.5	9.2	7.9	6.3
20	13.0	12.1	11.5	10.7	10.0	8.5	7.4	5.9
24	10.6	9.9	9.4	8.8	8.2	7.4	6.7	5.4
32		7.3	6.9	6.5	6.0	5.5	5.0	4.3
38			5.7	5.3	4.9	4.5	4.0	3.5
44				4.4	4.0	3.6	3.3	2.8
50					3.4	3.0	2.6	2.2
55						2.5	2.2	

34t standard counterweight and 17.5t carbody counterweight

Load capacities in [t] with 23m main boom 88°, standard counterweight

Radius [m]	Jib length [m]							
	22.7	31.7	37.4	43.4	49.1	55.1	60.8	66.8
7.9	29.2							
10	24.4	21.0						
11	22.5	19.6	17.5					
13	19.1	17.2	15.8	14.1				
14	17.9	16.2	14.8	13.2	11.7			
15	16.6	15.1	13.9	12.6	11.2	9.0		
16	15.4	14.1	13.2	11.9	10.7	8.8	7.4	
18	13.7	12.7	11.7	10.7	9.6	8.4	7.2	5.8
24	10.0	9.2	8.7	8.0	7.3	6.6	5.8	4.9
32		6.8	6.4	5.9	5.4	4.9	4.4	3.8
38			5.3	4.8	4.4	4.0	3.6	3.1
44				4.1	3.7	3.2	2.9	2.5
48					3.3	2.8	2.5	2.1
50					3.1	2.7	2.3	
55						2.3		

34t standard counterweight and 17.5t carbody counterweight

Load capacities in [t] with 29m main boom 88°, standard counterweight

Radius [m]	Jib length [m]							
	22.7	31.7	37.4	43.4	49.1	55.1	60.8	66.8
8.1	25.9							
10	22.8	19.0						
12	19.7	17.2	15.3					
13	18.3	16.0	14.4	12.8				
14	17.2	15.1	13.7	12.2	10.5			
15	16.0	14.3	12.9	11.6	10.2	8.2		
16	15.0	13.4	12.3	11.0	9.7	8.2	6.8	
18	13.4	12.0	11.0	10.0	8.9	7.8	6.6	5.3
24	9.9	8.9	8.3	7.6	6.8	6.1	5.3	4.5
32		6.7	6.2	5.7	5.2	4.6	4.1	3.4
38			5.2	4.7	4.3	3.8	3.3	2.8
44				4.0	3.5	3.1	2.7	2.3
46					3.4	2.9	2.5	2.1
50					3.0	2.5	2.2	
55						2.2		

34t standard counterweight and 17.5t carbody counterweight

Load capacities in [t] with 35m main boom 88°, standard counterweight

Radius [m]	Jib length [m]							
	22.7	31.7	37.4	43.4	49.1	55.1	60.8	66.8
8.3	21.8							
11	19.0	15.5						
12	18.1	14.7	12.9					
13	17.0	14.1	12.3	10.5				
14	16.3	13.5	11.9	10.2	8.7			
16	14.5	12.3	10.9	9.4	8.2	6.9		
17	13.7	11.8	10.5	9.0	7.9	6.6	5.6	
18	13.1	11.4	10.0	8.7	7.6	6.4	5.4	4.4
24	9.8	8.7	7.9	7.0	6.2	5.3	4.4	3.6
34		5.6	5.7	5.2	4.7	4.0	3.5	2.8
38			5.1	4.6	4.1	3.6	3.1	2.5
44				3.9	3.5	3.0	2.6	2.1
46					3.3	2.8	2.4	2.0
50					3.0	2.5	2.1	
55						2.2		

34t standard counterweight and 17.5t carbody counterweight

Load capacities in [t] with 38m main boom 88°, standard counterweight

Radius [m]	Jib length [m]							
	22.7	31.7	37.4	43.4	49.1	55.1	60.8	66.8
8.4	18.7							
11	16.3	13.4						
12	15.5	12.7	11.2					
13	14.7	12.1	10.7	9.1				
14	14.0	11.6	10.3	8.8	7.5			
16	12.6	10.5	9.3	8.1	7.0	6.0		
17	11.9	10.0	9.0	7.8	6.8	5.7	4.8	
18	11.4	9.6	8.6	7.5	6.5	5.5	4.7	3.7
20	10.5	8.8	7.8	6.9	6.0	5.1	4.3	3.5
24	9.1	7.5	6.7	5.9	5.2	4.4	3.7	3.0
34		5.1	5.2	4.5	3.9	3.2	2.7	2.1
38			4.7	4.1	3.5	2.9	2.4	
42				3.7	3.2	2.6	2.1	
44				3.6	3.1	2.5		
50					2.7	2.2		

34t standard counterweight and 17.5t carbody counterweight

Load capacities in [t] with 41m main boom 88°, standard counterweight

Radius [m]	Jib length [m]							
	22.7	31.7	37.4	43.4	49.1	55.1		
8.5	16.8							
11	14.9	12.1						
12	14.2	11.5	10.1					
13	13.4	11.0	9.6	8.2				
14	12.7	10.5	9.3	7.9	6.7			
16	11.5	9.6	8.4	7.3	6.3	5.3		
18	10.6	8.8	7.7	6.7	5.8	4.9		
20	9.7	8.0	7.1	6.2	5.3	4.5		
24	8.5	6.9	6.1	5.2	4.6	3.8		
28		6.2	5.4	4.6	4.0	3.4		
34		5.4	4.8	4.0	3.4	2.8		
38			4.4	3.7	3.1	2.5		
44				3.2	2.7	2.1		
46					2.6	2.0		
50					2.4			

34t standard counterweight and 17.5t carbody counterweight

TLT 11943069 - M00000 V7. Above load charts are for reference only. For actual lift duty please refer to load chart in operator's cabin or manual. Otherwise we recommend you to plan your lifting job using Crane Planner 2.0.



# Load capacities with luffing jib

Load capacities in [t] with 17 m main boom 83°, standard counterweight

Radius [m]	Jib length [m]							
	22.7	31.7	37.4	43.4	49.1	55.1	60.8	66.8
11.1	28.6							
14	22.2	20.5						
16	19.1	17.8	17.0					
18	16.6	15.5	14.8	13.7				
19	15.6	14.6	13.9	13.0	11.4			
22	12.9	12.2	11.7	11.0	10.2	8.3		
24	11.8	11.0	10.5	9.9	9.3	8.0	6.9	5.4
26	10.7	10.0	9.6	9.1	8.6	7.6	6.7	5.3
30		8.5	8.2	7.8	7.3	6.8	6.0	5.0
34		7.4	7.1	6.7	6.4	5.8	5.4	4.7
40			5.8	5.5	5.2	4.8	4.4	3.9
46				4.6	4.3	3.8	3.5	3.2
50					3.8	3.4	3.1	2.7
55						2.9	2.6	2.2
60							2.1	

34 t standard counterweight and 17.5 t carbody counterweight

Load capacities in [t] with 23 m main boom 83°, standard counterweight

Radius [m]	Jib length [m]							
	22.7	31.7	37.4	43.4	49.1	55.1	60.8	66.8
11.9	24.6							
15	19.4	17.8						
17	16.9	15.7	14.6					
18	15.8	14.6	13.8	12.3				
20	14.0	13.1	12.3	11.3	10.2			
22	12.4	11.6	11.0	10.3	9.4	7.9		
24	11.2	10.5	10.0	9.3	8.6	7.5	6.5	
26	10.3	9.6	9.1	8.6	7.9	7.1	6.2	5.0
30		8.1	7.8	7.3	6.8	6.2	5.5	4.8
34		7.2	6.7	6.4	5.9	5.4	4.9	4.2
38			6.0	5.5	5.2	4.7	4.2	3.7
40				5.6	5.1	4.8	4.4	4.0
46					4.3	4.0	3.6	3.3
50						3.5	3.1	2.8
55							2.7	2.4

34 t standard counterweight and 17.5 t carbody counterweight

Load capacities in [t] with 29 m main boom 83°, standard counterweight

Radius [m]	Jib length [m]							
	22.7	31.7	37.4	43.4	49.1	55.1	60.8	66.8
12.6	22.7							
16	18.1	16.2						
17	17.0	15.2	13.7					
19	14.9	13.6	12.6	11.2				
22	12.6	11.6	10.7	9.9	8.9			
24	11.3	10.5	9.9	9.0	8.2	7.1	6.0	
26	10.5	9.6	9.0	8.3	7.5	6.7	5.8	4.7
30		8.2	7.8	7.2	6.6	5.9	5.3	4.4
34		7.3	6.7	6.3	5.8	5.2	4.7	4.0
36		6.8	6.3	5.9	5.5	4.8	4.4	3.8
40			5.6	5.1	4.8	4.3	3.8	3.3
42			4.7	4.9	4.4	4.0	3.6	3.1
46				4.4	3.9	3.5	3.2	2.7
50					3.5	3.1	2.8	2.3
55						2.7	2.4	

34 t standard counterweight and 17.5 t carbody counterweight

Load capacities in [t] with 35 m main boom 83°, standard counterweight

Radius [m]	Jib length [m]							
	22.7	31.7	37.4	43.4	49.1	55.1	60.8	66.8
13.3	18.6							
16	16.6	13.6						
18	15.2	12.7	11.1					
20	13.9	11.7	10.4	8.9				
22	12.6	10.9	9.6	8.4	7.2			
24	11.4	10.1	9.0	7.9	6.8	5.7		
26	10.6	9.5	8.5	7.5	6.5	5.5	4.6	
28		9.9	8.8	8.1	7.1	6.2	5.3	4.4
32			7.7	7.2	6.5	5.7	4.9	4.1
36			6.9	6.3	5.8	5.2	4.5	3.9
42				5.4	4.9	4.4	3.9	3.4
48					4.2	3.8	3.3	2.9
50						3.6	3.1	2.7
55							2.7	2.4
60								2.0

34 t standard counterweight and 17.5 t carbody counterweight

Load capacities in [t] with 38 m main boom 83°, standard counterweight

Radius [m]	Jib length [m]							
	22.7	31.7	37.4	43.4	49.1	55.1	60.8	66.8
13.7	15.6							
17	13.5	11.3						
18	12.9	10.8	9.4					
20	11.7	9.9	8.8	7.6				
22	10.9	9.2	8.1	7.1	6.2			
24	10.1	8.5	7.5	6.6	5.8	4.9		
26	9.6	7.9	7.1	6.2	5.4	4.6	3.9	
28	9.1	7.5	6.7	5.9	5.2	4.4	3.7	3.0
32		6.9	6.1	5.3	4.7	4.0	3.3	2.7
36		6.3	5.6	4.9	4.2	3.6	3.0	2.4
40			5.1	4.5	3.9	3.2	2.7	2.1
42			4.9	4.3	3.7	3.1	2.5	
48				3.8	3.3	2.7	2.2	
50					3.1	2.6	2.0	
55						2.3		

34 t standard counterweight and 17.5 t carbody counterweight

Load capacities in [t] with 41 m main boom 83°, standard counterweight

Radius [m]	Jib length [m]							
	22.7	31.7	37.4	43.4	49.1	55.1		
14.1	13.7							
17	12.0	9.9						
19	11.0	9.2	8.1					
22	9.8	8.1	7.2	6.2	5.3			
24	9.2	7.5	6.6	5.8	5.0	4.1		
26	8.7	7.1	6.2	5.4	4.7	3.9		
28	8.3	6.7	5.9	5.2	4.4	3.7		
32		6.2	5.4	4.6	4.0	3.3		
36		5.7	5.0	4.3	3.6	3.0		
40			4.6	3.9	3.3	2.7		
42			4.4	3.8	3.2	2.6		
44				3.6	3.1	2.5		
46				3.5	3.0	2.3		
48				3.3	2.8	2.2		
50					2.7	2.1		

34 t standard counterweight and 17.5 t carbody counterweight

TLT 11943069 - M00000 V7. Above load charts are for reference only. For actual lift duty please refer to load chart in operator's cabin or manual. Otherwise we recommend you to plan your lifting job using Crane Planner 2.0.

# Load capacities with luffing jib

Load capacities in [t] with 17m main boom 75°, standard counterweight

Radius [m]	Jib length [m]							
	22.7	31.7	37.4	43.4	49.1	55.1	60.8	66.8
16.4	19.0							
22	13.5	13.1						
24	12.1	11.8	11.5					
26	10.9	10.7	10.5	10.0				
28	9.9	9.7	9.5	9.1	8.7			
32		8.1	7.9	7.7	7.4	6.9		
34		7.5	7.3	7.1	6.9	6.4	6.0	
36		6.9	6.7	6.5	6.3	5.9	5.5	4.7
40			5.8	5.6	5.4	5.1	4.7	4.3
42			5.4	5.2	5.0	4.8	4.4	3.9
46				4.5	4.3	4.1	3.8	3.4
48				4.1	4.0	3.8	3.5	3.1
50					3.7	3.5	3.3	2.9
55						2.9	2.7	2.5
60						2.4	2.2	2.0

34t standard counterweight and 17.5t carbody counterweight

Load capacities in [t] with 23m main boom 75°, standard counterweight

Radius [m]	Jib length [m]							
	22.7	31.7	37.4	43.4	49.1	55.1	60.8	66.8
18	16.0							
22	13.0	12.1						
26	10.5	10.1	9.6					
28	9.6	9.3	8.9	8.4				
30	8.7	8.5	8.2	7.7	7.3			
32		7.7	7.6	7.2	6.8	6.2		
36		6.6	6.4	6.2	5.8	5.3	4.9	
38		6.1	5.9	5.7	5.4	4.9	4.5	4.0
40			5.5	5.3	5.0	4.6	4.2	3.7
42			5.1	4.9	4.7	4.3	3.9	3.4
44			4.7	4.5	4.4	4.0	3.6	3.1
48				3.9	3.8	3.5	3.1	2.7
50				3.6	3.5	3.2	2.9	2.5
55					2.9	2.7	2.4	2.0
60						2.2		

34t standard counterweight and 17.5t carbody counterweight

Load capacities in [t] with 29m main boom 75°, standard counterweight

Radius [m]	Jib length [m]							
	22.7	31.7	37.4	43.4	49.1	55.1	60.8	66.8
19.5	13.5							
24	10.9	10.1						
26	10.0	9.2	8.8					
30	8.3	7.9	7.5	7.0				
32		7.3	6.9	6.4	5.9			
34		6.8	6.4	5.9	5.5	5.0		
36		6.2	6.0	5.5	5.1	4.6	4.1	
38		5.8	5.6	5.1	4.7	4.2	3.8	
40		5.3	5.2	4.8	4.4	3.9	3.5	3.0
42			4.8	4.5	4.1	3.6	3.2	2.7
44			4.5	4.2	3.8	3.4	3.0	2.5
46			4.1	3.9	3.6	3.1	2.7	2.3
48				3.7	3.4	2.9	2.5	2.1
50				3.4	3.1	2.7	2.4	
55					2.6	2.3		

34t standard counterweight and 17.5t carbody counterweight

Load capacities in [t] with 35m main boom 75°, standard counterweight

Radius [m]	Jib length [m]							
	22.7	31.7	37.4	43.4	49.1	55.1	60.8	66.8
21.1	11.4							
26	9.1	8.4						
28	8.4	7.7	7.2					
30	7.8	7.1	6.7	6.1				
32	7.2	6.6	6.1	5.6				
34		6.1	5.7	5.2	4.7			
36		5.7	5.3	4.8	4.3	3.8		
38		5.3	4.9	4.5	4.0	3.5	3.1	
40		5.0	4.6	4.2	3.7	3.2	2.8	2.3
42		4.6	4.3	3.9	3.5	3.0	2.6	2.1
44			4.0	3.7	3.2	2.8	2.3	
46			3.8	3.4	3.0	2.6	2.2	
48				3.2	2.8	2.4		
50				3.0	2.7	2.2		
55					2.2			

34t standard counterweight and 17.5t carbody counterweight

Load capacities in [t] with 38m main boom 75°, standard counterweight

Radius [m]	Jib length [m]							
	22.7	31.7	37.4	43.4	49.1	55.1	60.8	
21.9	10.4							
24	9.5							
26	8.7	7.9						
28	8.0	7.2						
30	7.4	6.6	6.1					
32	6.9	6.1	5.7	5.1				
34	6.4	5.7	5.2	4.7	4.2			
36		5.3	4.9	4.4	3.9	3.4		
38		5.0	4.6	4.1	3.6	3.1	2.6	
40		4.7	4.3	3.8	3.3	2.8	2.4	
42		4.4	4.0	3.5	3.1	2.6	2.2	
44			3.8	3.3	2.9	2.4		
46			3.5	3.1	2.7	2.2		
48			3.3	2.9	2.5	2.1		
50				2.7	2.4			

34t standard counterweight and 17.5t carbody counterweight

Load capacities in [t] with 41m main boom 75°, standard counterweight

Radius [m]	Jib length [m]							
	22.7	31.7	37.4	43.4	49.1	55.1		
22.6	9.2							
24	9.0							
26	8.2							
28	7.6	6.7						
30	7.0	6.2	5.7					
32	6.5	5.7	5.2	4.7				
34	6.0	5.3	4.8	4.3	3.8			
36		5.0	4.5	4.0	3.5			
38		4.6	4.2	3.7	3.2	2.7		
40		4.4	3.9	3.4	3.0	2.5		
42		4.1	3.7	3.2	2.8	2.3		
44			3.5	3.0	2.6	2.1		
46			3.3	2.8	2.4			
48			3.0	2.6	2.2			
50				2.5	2.1			

34t standard counterweight and 17.5t carbody counterweight

TLT 11943069 - M00000 V7. Above load charts are for reference only. For actual lift duty please refer to load chart in operator's cabin or manual. Otherwise we recommend you to plan your lifting job using Crane Planner 2.0.

# Load capacities with luffing jib

Load capacities in [t] with 17 m main boom 65°, standard counterweight

Radius [m]	Jib length [m]							
	22.7	31.7	37.4	43.4	49.1	55.1	60.8	66.8
22.6	12.1							
28	9.2	8.9						
30	8.4	8.1						
32		7.5	7.3					
34		6.9	6.7					
36		6.3	6.1	5.9				
38		5.8	5.7	5.5	5.2			
40		5.4	5.3	5.0	4.8			
42			4.9	4.7	4.5	4.2		
44			4.5	4.3	4.1	3.9		
46				4.0	3.8	3.6	3.2	
48				3.7	3.5	3.3	3.0	2.6
50				3.5	3.3	3.1	2.8	2.4
55					2.7	2.5	2.3	
60						2.0		

34t standard counterweight and 17.5t carbody counterweight

Load capacities in [t] with 23 m main boom 65°, standard counterweight

Radius [m]	Jib length [m]							
	22.7	31.7	37.4	43.4	49.1	55.1	60.8	
25.1	9.9							
32	7.2	6.8						
34	6.6	6.3	6.1					
36		5.8	5.6					
38		5.4	5.2	4.9				
40		4.9	4.8	4.5				
42		4.6	4.4	4.2	3.9			
44			4.1	3.9	3.6	3.2		
46			3.8	3.6	3.3	2.9		
48			3.5	3.3	3.1	2.7	2.3	
50				3.1	2.9	2.5	2.2	
55					2.3	2.1		

34t standard counterweight and 17.5t carbody counterweight

Load capacities in [t] with 29 m main boom 65°, standard counterweight

Radius [m]	Jib length [m]							
	22.7	31.7	37.4	43.4	49.1			
27.6	8.0							
34	6.0	5.6						
36	5.6	5.2						
38		4.8	4.5					
40		4.4	4.2	3.7				
44		3.8	3.6	3.2	2.8			
46			3.3	3.0	2.6			
48			3.1	2.8	2.4			
50			2.9	2.6	2.3			
55				2.1				

34t standard counterweight and 17.5t carbody counterweight

Load capacities in [t] with 35 m main boom 65°, standard counterweight

Radius [m]	Jib length [m]							
	22.7	31.7	37.4	43.4				
30.2	6.1							
36	4.9	4.3						
38	4.6	4.0						
40		3.7	3.3					
44		3.2	2.9	2.4				
46		3.0	2.6	2.3				
48			2.4	2.1				
50			2.3					

34t standard counterweight and 17.5t carbody counterweight

Load capacities in [t] with 38 m main boom 65°, standard counterweight

Radius [m]	Jib length [m]							
	22.7	31.7	37.4					
31.4	5.3							
38	4.2	3.5						
40	3.9	3.3	2.8					
42		3.1	2.6					
44		2.8	2.5					
46		2.6	2.3					
48		2.4	2.1					

34t standard counterweight and 17.5t carbody counterweight

Load capacities in [t] with 41 m main boom 65°, standard counterweight

Radius [m]	Jib length [m]							
	22.7	31.7	37.4					
32.7	4.6							
38	3.7	3.0						
40	3.5	2.8						
42		2.6	2.2					
44		2.4	2.0					
46		2.2						
48		2.1						

34t standard counterweight and 17.5t carbody counterweight

TLT 11943069 - M00000 V7. Above load charts are for reference only. For actual lift duty please refer to load chart in operator's cabin or manual. Otherwise we recommend you to plan your lifting job using Crane Planner 2.0.

# Load capacities with luffing jib

Load capacities in [t] with 17m main boom 45°, standard counterweight

Radius [m]	Jib length [m]							
	22.7	31.7	37.4	43.4				
32.8	6.5							
36	5.7							
42		4.2						
44		3.9						
46			3.4					
48			3.2					
50			2.9	2.7				
55				2.2				

34 t standard counterweight and 17.5 t carbody counterweight

Load capacities in [t] with 23m main boom 45°, standard counterweight

Radius [m]	Jib length [m]							
	22.7	31.7	37.4					
37	4.6							
38	4.4							
40	4.1							
46		2.9						
48		2.7						
50			2.3					

34 t standard counterweight and 17.5 t carbody counterweight

Load capacities in [t] with 29m main boom 45°, standard counterweight

Radius [m]	Jib length [m]							
	22.7							
41.3	3.1							
42	3.0							
44	2.8							

34 t standard counterweight and 17.5 t carbody counterweight

Load capacities in [t] with 32m main boom 45°, standard counterweight

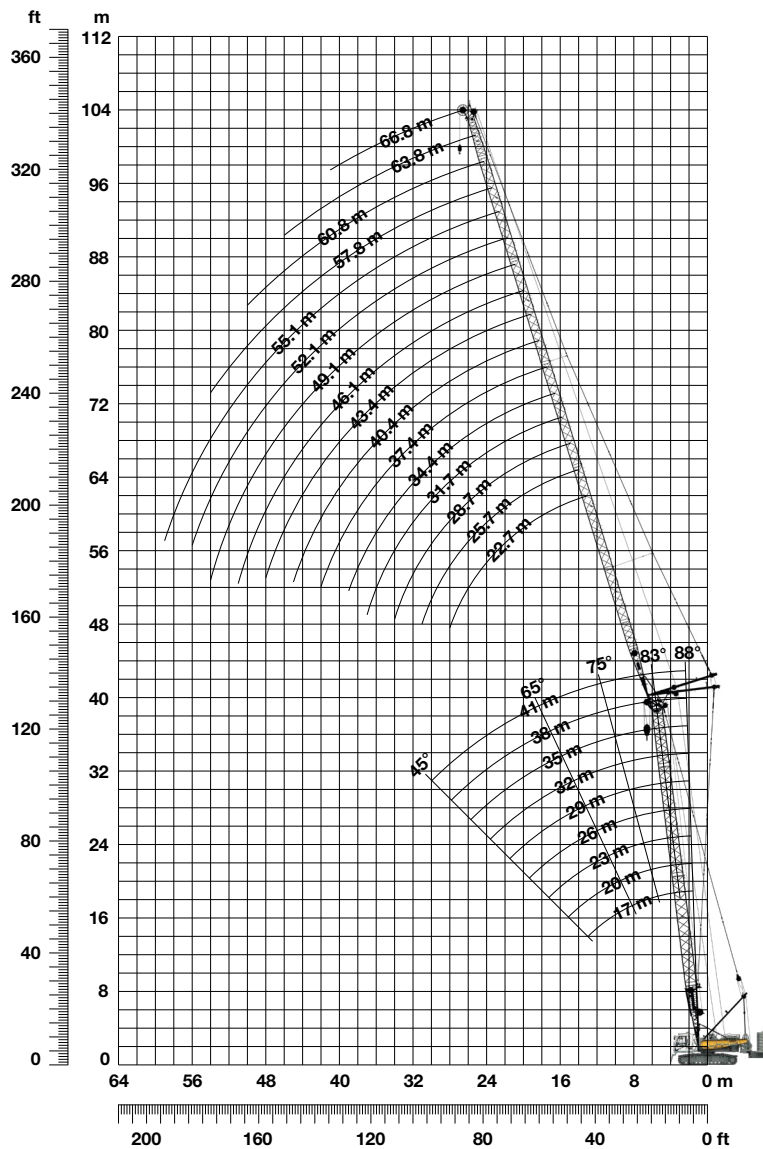
Radius [m]	Jib length [m]							
	22.7							
43.4	2.4							
44	2.4							
46	2.2							

34 t standard counterweight and 17.5 t carbody counterweight

TLT 11943069 - M00000 V7. Above load charts are for reference only. For actual lift duty please refer to load chart in operator's cabin or manual. Otherwise we recommend you to plan your lifting job using Crane Planner 2.0.

# Luffing jib 1309.xx

Jib lengths 22.7-66.8 m, swinging counterweight 90°



## Jib configuration 1309.xx

Jib section	Amount of jib sections															
	1	1	1	1	1	1	1	1	1	1	1	1	1	1	1	1
Jib foot 5.5m	1															
Jib section 3m		1														
Jib section 6m			1													
Jib section 11.7m	1	1	1	1	2	2	2	2	3	3	3	3	4	4	4	4
Jib head 5.5m	1	1	1	1	1	1	1	1	1	1	1	1	1	1	1	1
Jib length [m]	22.7	25.7	28.7	31.7	34.4	37.4	40.4	43.4	46.1	49.1	52.1	55.1	57.8	60.8	63.8	66.8

For main boom configuration please refer to the table on page 10.



# Load capacities with luffing jib

Load capacities in [t] with 17m main boom 88°, swinging counterweight 90°

Radius [m]	Jib length [m]							
	22.7	31.7	37.4	43.4	49.1	55.1	60.8	66.8
13				15.4				
14				14.9	12.7			
15			15.6	14.4	12.3	9.7		
16		15.5	14.7	13.4	12.1	9.4	8.1	
17		14.6	13.8	12.7	11.5	9.2	7.9	6.3
19	13.8	12.9	12.2	11.4	10.4	8.7	7.5	6.0
22	11.7	10.8	10.4	9.6	9.0	8.1	6.9	5.6
24	10.6	9.9	9.4	8.8	8.2	7.4	6.7	5.4
28		8.3	8.0	7.5	7.0	6.4	5.7	4.9
32		7.3	6.9	6.5	6.0	5.5	5.0	4.3
38			5.7	5.3	4.9	4.5	4.0	3.5
44				4.4	4.0	3.6	3.3	2.8
50					3.4	3.0	2.6	2.2
55						2.5	2.2	

34t swinging counterweight 90° and 17.5t carbody counterweight

Load capacities in [t] with 23m main boom 88°, swinging counterweight 90°

Radius [m]	Jib length [m]							
	22.7	31.7	37.4	43.4	49.1	55.1	60.8	66.8
12.2				14.4				
13				15.8	14.1			
14				14.8	13.2	11.7		
15		15.1	13.9	12.6	11.2	9.0		
16		14.1	13.2	11.9	10.7	8.8	7.4	
18	13.7	12.7	11.7	10.7	9.6	8.4	7.2	5.8
20	12.1	11.2	10.5	9.6	8.8	7.6	6.8	5.5
24	10.0	9.2	8.7	8.0	7.3	6.6	5.8	4.9
28		7.7	7.4	6.8	6.3	5.6	5.0	4.3
32		6.8	6.4	5.9	5.4	4.9	4.4	3.8
38			5.3	4.8	4.4	4.0	3.6	3.1
44				4.1	3.7	3.2	2.9	2.5
48					3.3	2.8	2.5	2.1
50					3.1	2.7	2.3	
55						2.3		

34t swinging counterweight 90° and 17.5t carbody counterweight

Load capacities in [t] with 29m main boom 88°, swinging counterweight 90°

Radius [m]	Jib length [m]							
	22.7	31.7	37.4	43.4	49.1	55.1	60.8	66.8
11.2			15.6					
13		16.0	14.4	12.8				
14		15.1	13.7	12.2	10.5			
15		14.3	12.9	11.6	10.2	8.2		
16	15.0	13.4	12.3	11.0	9.7	8.2	6.8	
18	13.4	12.0	11.0	10.0	8.9	7.8	6.6	5.3
20	11.9	10.8	10.0	9.0	8.1	7.1	6.3	5.1
24	9.9	8.9	8.3	7.6	6.8	6.1	5.3	4.5
28		7.6	7.1	6.5	5.9	5.2	4.6	4.0
32		6.7	6.2	5.7	5.2	4.6	4.1	3.4
38			5.2	4.7	4.3	3.8	3.3	2.8
44				4.0	3.5	3.1	2.7	2.3
46					3.4	2.9	2.5	2.1
50					3.0	2.5	2.2	
55						2.2		

34t swinging counterweight 90° and 17.5t carbody counterweight

Load capacities in [t] with 35m main boom 88°, swinging counterweight 90°

Radius [m]	Jib length [m]							
	22.7	31.7	37.4	43.4	49.1	55.1	60.8	66.8
11		15.5						
12		14.7	12.9					
13		14.1	12.3	10.5				
14	16.3	13.5	11.9	10.2	8.7			
16	14.5	12.3	10.9	9.4	8.2	6.9		
17	13.7	11.8	10.5	9.0	7.9	6.6	5.6	
18	13.1	11.4	10.0	8.7	7.6	6.4	5.4	4.4
20	11.7	10.3	9.2	8.1	7.1	6.0	5.1	4.1
24	9.8	8.7	7.9	7.0	6.2	5.3	4.4	3.6
34		5.6	5.7	5.2	4.7	4.0	3.5	2.8
38			5.1	4.6	4.1	3.6	3.1	2.5
44				3.9	3.5	3.0	2.6	2.1
46					3.3	2.8	2.4	2.0
50					3.0	2.5	2.1	
55						2.2		

34t swinging counterweight 90° and 17.5t carbody counterweight

Traglasten in [t] mit 38m Hauptausleger 88°, Schwenkballast 90°

Radius [m]	Jib length [m]							
	22.7	31.7	37.4	43.4	49.1	55.1	60.8	66.8
10.3		13.6						
12		12.7	11.2					
13	14.1	12.1	10.7	9.1				
14	14.0	11.6	10.3	8.8	7.5			
16	12.6	10.5	9.3	8.1	7.0	6.0		
17	11.9	10.0	9.0	7.8	6.8	5.7	4.8	
18	11.4	9.6	8.6	7.5	6.5	5.5	4.7	3.7
20	10.5	8.8	7.8	6.9	6.0	5.1	4.3	3.5
24	9.1	7.5	6.7	5.9	5.2	4.4	3.7	3.0
32		6.1	5.4	4.7	4.1	3.4	2.9	2.2
34		5.1	5.2	4.5	3.9	3.2	2.7	2.1
38			4.7	4.1	3.5	2.9	2.4	
42				3.7	3.2	2.6	2.1	
44				3.6	3.1	2.5		
50					2.7	2.2		

34t swinging counterweight 90° and 17.5t carbody counterweight

Traglasten in [t] mit 41m Hauptausleger 88°, Schwenkballast 90°

Radius [m]	Jib length [m]							
	22.7	31.7	37.4	43.4	49.1	55.1		
10.4		12.2						
12	14.2	11.5	10.1					
13	13.4	11.0	9.6	8.2				
14	12.7	10.5	9.3	7.9	6.7			
16	11.5	9.6	8.4	7.3	6.3	5.3		
18	10.6	8.8	7.7	6.7	5.8	4.9		
20	9.7	8.0	7.1	6.2	5.3	4.5		
24	8.5	6.9	6.1	5.2	4.6	3.8		
28		6.2	5.4	4.6	4.0	3.4		
34		5.4	4.8	4.0	3.4	2.8		
38			4.4	3.7	3.1	2.5		
42				3.4	2.8	2.3		
44				3.2	2.7	2.1		
46					2.6	2.0		
50					2.4			

34t swinging counterweight 90° and 17.5t carbody counterweight

TLT 11943069 - M00000 V7. Above load charts are for reference only. For actual lift duty please refer to load chart in operator's cabin or manual. Otherwise we recommend you to plan your lifting job using Crane Planner 2.0.

# Load capacities with luffing jib

Load capacities in [t] with 17m main boom 83°, swinging counterweight 90°

Radius [m]	Jib length [m]							
	22.7	31.7	37.4	43.4	49.1	55.1	60.8	66.8
13.8		20.5						
14	22.2	20.5						
16	19.1	17.8	17.0					
18	16.6	15.5	14.8	13.7				
19	15.6	14.6	13.9	13.0	11.4			
22	12.9	12.2	11.7	11.0	10.2	8.3		
24	11.8	11.0	10.5	9.9	9.3	8.0	6.9	5.4
26	10.7	10.0	9.6	9.1	8.6	7.6	6.7	5.3
30		8.5	8.2	7.8	7.3	6.8	6.0	5.0
34		7.4	7.1	6.7	6.4	5.8	5.4	4.7
40			5.8	5.5	5.2	4.8	4.4	3.9
46				4.6	4.3	3.8	3.5	3.2
50					3.8	3.4	3.1	2.7
55						2.9	2.6	2.2
60							2.1	

34t swinging counterweight 90° and 17.5t carbody counterweight

Load capacities in [t] with 23m main boom 83°, swinging counterweight 90°

Radius [m]	Jib length [m]							
	22.7	31.7	37.4	43.4	49.1	55.1	60.8	66.8
11.9	24.6							
15	19.4	17.8						
17	16.9	15.7	14.6					
18	15.8	14.6	13.8	12.3				
20	14.0	13.1	12.3	11.3	10.2			
22	12.4	11.6	11.0	10.3	9.4	7.9		
24	11.2	10.5	10.0	9.3	8.6	7.5	6.5	
26	10.3	9.6	9.1	8.6	7.9	7.1	6.2	5.0
30		8.1	7.8	7.3	6.8	6.2	5.5	4.8
34		7.2	6.7	6.4	5.9	5.4	4.9	4.2
38			6.0	5.5	5.2	4.7	4.2	3.7
40				5.6	5.1	4.8	4.4	4.0
46					4.3	4.0	3.6	3.3
50						3.5	3.1	2.8
55							2.7	2.4

34t swinging counterweight 90° and 17.5t carbody counterweight

Load capacities in [t] with 29m main boom 83°, swinging counterweight 90°

Radius [m]	Jib length [m]							
	22.7	31.7	37.4	43.4	49.1	55.1	60.8	66.8
12.6	22.7							
16	18.1	16.2						
17	17.0	15.2	13.7					
19	14.9	13.6	12.6	11.2				
22	12.6	11.6	10.7	9.9	8.9			
24	11.3	10.5	9.9	9.0	8.2	7.1	6.0	
26	10.5	9.6	9.0	8.3	7.5	6.7	5.8	4.7
30		8.2	7.8	7.2	6.6	5.9	5.3	4.4
34		7.3	6.7	6.3	5.8	5.2	4.7	4.0
36		6.8	6.3	5.9	5.5	4.8	4.4	3.8
40			5.6	5.1	4.8	4.3	3.8	3.3
42			4.7	4.9	4.4	4.0	3.6	3.1
46				4.4	3.9	3.5	3.2	2.7
50					3.5	3.1	2.8	2.3
55						2.7	2.4	

34t swinging counterweight 90° and 17.5t carbody counterweight

Load capacities in [t] with 35m main boom 83°, swinging counterweight 90°

Radius [m]	Jib length [m]							
	22.7	31.7	37.4	43.4	49.1	55.1	60.8	66.8
13.3	18.6							
16	16.6	13.6						
18	15.2	12.7	11.1					
20	13.9	11.7	10.4	8.9				
22	12.6	10.9	9.6	8.4	7.2			
24	11.4	10.1	9.0	7.9	6.8	5.7		
26	10.6	9.5	8.5	7.5	6.5	5.5	4.6	
28		9.9	8.8	8.1	7.1	6.2	5.3	4.4
32			7.7	7.2	6.5	5.7	4.9	4.1
36			6.9	6.3	5.8	5.2	4.5	3.9
42				5.4	4.9	4.4	3.9	3.4
48					4.2	3.8	3.3	2.9
50						3.6	3.1	2.7
55							2.7	2.4
60								2.0

34t swinging counterweight 90° and 17.5t carbody counterweight

Load capacities in [t] with 38m main boom 83°, swinging counterweight 90°

Radius [m]	Jib length [m]							
	22.7	31.7	37.4	43.4	49.1	55.1	60.8	66.8
13.7	15.6							
17	13.5	11.3						
18	12.9	10.8	9.4					
20	11.7	9.9	8.8	7.6				
22	10.9	9.2	8.1	7.1	6.2			
24	10.1	8.5	7.5	6.6	5.8	4.9		
26	9.6	7.9	7.1	6.2	5.4	4.6	3.9	
28	9.1	7.5	6.7	5.9	5.2	4.4	3.7	3.0
32		6.9	6.1	5.3	4.7	4.0	3.3	2.7
36		6.3	5.6	4.9	4.2	3.6	3.0	2.4
40			5.1	4.5	3.9	3.2	2.7	2.1
42			4.9	4.3	3.7	3.1	2.5	
48				3.8	3.3	2.7	2.2	
50					3.1	2.6	2.0	
55						2.3		

34t swinging counterweight 90° and 17.5t carbody counterweight

Load capacities in [t] with 41m main boom 83°, swinging counterweight 90°

Radius [m]	Jib length [m]							
	22.7	31.7	37.4	43.4	49.1	55.1		
14.1	13.7							
17	12.0	9.9						
19	11.0	9.2	8.1					
22	9.8	8.1	7.2	6.2	5.3			
24	9.2	7.5	6.6	5.8	5.0	4.1		
26	8.7	7.1	6.2	5.4	4.7	3.9		
28	8.3	6.7	5.9	5.2	4.4	3.7		
32		6.2	5.4	4.6	4.0	3.3		
36		5.7	5.0	4.3	3.6	3.0		
40			4.6	3.9	3.3	2.7		
42			4.4	3.8	3.2	2.6		
44				3.6	3.1	2.5		
46				3.5	3.0	2.3		
48				3.3	2.8	2.2		
50					2.7	2.1		

34t swinging counterweight 90° and 17.5t carbody counterweight

TLT 11943069 - M00000 V7. Above load charts are for reference only. For actual lift duty please refer to load chart in operator's cabin or manual. Otherwise we recommend you to plan your lifting job using Crane Planner 2.0.

# Load capacities with luffing jib

Load capacities in [t] with 17m main boom 75°, swinging counterweight 90°

Radius [m]	Jib length [m]							
	22.7	31.7	37.4	43.4	49.1	55.1	60.8	66.8
16.4	21.6							
22	15.3	14.5						
24	13.7	13.0	12.5					
26	12.4	11.7	11.4	10.8				
28	11.3	10.8	10.3	9.9	9.3			
32		9.1	8.8	8.4	8.1	7.2		
34		8.5	8.2	7.8	7.5	6.9	6.0	
36		7.9	7.6	7.3	6.9	6.5	5.9	4.7
40			6.7	6.3	6.1	5.7	5.3	4.5
42			6.2	5.9	5.6	5.3	4.9	4.4
46				5.3	5.0	4.6	4.4	3.8
48				4.9	4.7	4.3	4.1	3.6
50					4.4	4.1	3.8	3.4
60						2.6	2.6	2.3
65							2.1	

34t swinging counterweight 90° and 17.5t carbody counterweight

Load capacities in [t] with 23m main boom 75°, swinging counterweight 90°

Radius [m]	Jib length [m]								
	22.7	31.7	37.4	43.4	49.1	55.1	60.8	66.8	
18	18.4								
22	14.8	14.0							
26	12.0	11.6	11.2						
28	10.9	10.6	10.3	9.7					
30	9.5	9.7	9.5	8.9	8.4				
32		8.9	8.7	8.3	7.8	6.9			
36		7.6	7.4	7.2	6.8	6.3	5.6		
38		7.0	6.9	6.7	6.4	5.9	5.3	4.4	
42			6.0	5.8	5.6	5.1	4.7	4.1	
44				5.6	5.4	5.2	4.8	4.4	3.9
48					4.7	4.5	4.2	3.9	3.4
50					3.9	4.2	3.9	3.6	3.2
55						3.5	3.3	3.1	2.7
60							2.8	2.6	2.2
65								2.2	

34t swinging counterweight 90° and 17.5t carbody counterweight

Load capacities in [t] with 29m main boom 75°, swinging counterweight 90°

Radius [m]	Jib length [m]								
	22.7	31.7	37.4	43.4	49.1	55.1	60.8	66.8	
19.5	15.7								
24	12.7	11.8							
26	11.6	10.8	10.4						
30	9.6	9.3	8.8	8.3					
32		8.6	8.2	7.7	7.2				
34		7.9	7.6	7.1	6.7	6.1			
36		7.3	7.1	6.6	6.2	5.7	5.2		
40		6.3	6.1	5.8	5.4	4.9	4.5	4.0	
42			5.7	5.5	5.1	4.6	4.2	3.7	
44				5.3	5.1	4.7	4.3	3.9	3.4
46			4.9	4.7	4.5	4.0	3.6	3.2	
48				4.4	4.2	3.8	3.4	2.9	
50				4.1	3.9	3.6	3.2	2.7	
55					3.3	3.1	2.7	2.3	
60						2.6	2.3		

34t swinging counterweight 90° and 17.5t carbody counterweight

Load capacities in [t] with 35m main boom 75°, swinging counterweight 90°

Radius [m]	Jib length [m]								
	22.7	31.7	37.4	43.4	49.1	55.1	60.8	66.8	
21.1	13.3								
26	10.7	9.9							
28	9.9	9.2	8.7						
30	9.2	8.5	8.0	7.3					
32	8.4	7.9	7.4	6.9					
34		7.3	6.9	6.4	5.9				
36		6.9	6.4	5.9	5.5	4.9			
38		6.4	6.0	5.5	5.1	4.6	3.9		
40		6.0	5.7	5.2	4.7	4.2	3.8	3.0	
42		5.5	5.3	4.9	4.4	3.9	3.5	3.0	
46			4.7	4.3	3.9	3.5	3.0	2.5	
48				4.1	3.7	3.2	2.8	2.3	
50					3.8	3.5	3.0	2.6	2.2
55						3.0	2.6	2.2	
60							2.2		

34t swinging counterweight 90° and 17.5t carbody counterweight

Load capacities in [t] with 38m main boom 75°, swinging counterweight 90°

Radius [m]	Jib length [m]							
	22.7	31.7	37.4	43.4	49.1	55.1	60.8	66.8
21.9	11.6							
26	10.3	8.7						
30	8.8	8.0	7.1					
32	8.2	7.4	6.9	5.9				
34	7.5	6.9	6.4	5.7	4.9			
36		6.5	6.0	5.5	4.7	3.9		
38		6.1	5.6	5.1	4.6	3.8	3.1	
40		5.7	5.3	4.8	4.3	3.7	3.0	
42		5.4	5.0	4.5	4.0	3.6	2.9	2.2
44			4.7	4.2	3.8	3.3	2.9	2.2
46			4.4	4.0	3.6	3.1	2.7	2.1
48			4.2	3.8	3.3	2.9	2.5	
50				3.6	3.2	2.7	2.3	
55					2.8	2.3		
60						2.0		

34t swinging counterweight 90° and 17.5t carbody counterweight

Load capacities in [t] with 41m main boom 75°, swinging counterweight 90°

Radius [m]	Jib length [m]							
	22.7	31.7	37.4	43.4	49.1	55.1		
22.6	9.2							
28	8.5	7.0						
30	8.1	6.7	5.9					
32	7.8	6.4	5.7	4.8				
34	7.3	6.2	5.4	4.7	3.9			
36		5.9	5.2	4.5	3.8			
38		5.7	5.0	4.3	3.7	3.0		
40		5.4	4.8	4.1	3.5	2.9		
42		5.1	4.6	4.0	3.4	2.8		
44			4.4	3.8	3.3	2.6		
46			4.2	3.6	3.1	2.5		
48			3.9	3.5	3.0	2.4		
50				3.3	2.8	2.3		
55					2.5			
60						2.1		

34t swinging counterweight 90° and 17.5t carbody counterweight

TLT 11943069 - M00000 V7. Above load charts are for reference only. For actual lift duty please refer to load chart in operator's cabin or manual. Otherwise we recommend you to plan your lifting job using Crane Planner 2.0.

# Load capacities with luffing jib

Load capacities in [t] with 17m main boom 65°, swinging counterweight 90°

Radius [m]	Jib length [m]							
	22.7	31.7	37.4	43.4	49.1	55.1	60.8	66.8
22.6	13.9							
28	10.6	10.3						
30	9.7	9.4						
32		8.6	8.4					
36		7.4	7.2	7.0				
38		6.8	6.7	6.4	6.2			
40		6.3	6.2	6.0	5.8			
42			5.8	5.6	5.4	5.1		
44			5.4	5.2	5.0	4.7		
46				4.8	4.6	4.4	4.1	
48				4.5	4.3	4.1	3.8	3.4
50				4.2	4.0	3.8	3.6	3.2
55					3.4	3.2	3.0	2.7
60						2.6	2.5	2.2
65							2.0	

34t swinging counterweight 90° and 17.5t carbody counterweight

Load capacities in [t] with 23m main boom 65°, swinging counterweight 90°

Radius [m]	Jib length [m]							
	22.7	31.7	37.4	43.4	49.1	55.1	60.8	66.8
25.1	11.4							
32	8.4	8.0						
34	7.7	7.4	7.2					
36		6.8	6.6					
38		6.3	6.1	5.9				
40		5.9	5.7	5.5				
42		5.5	5.3	5.1	4.8			
44			4.9	4.7	4.5	4.1		
46			4.6	4.4	4.2	3.8		
48			4.3	4.1	3.9	3.6	3.2	
50				3.8	3.6	3.4	3.0	
55					3.0	2.8	2.5	2.1
60						2.3	2.1	

34t swinging counterweight 90° and 17.5t carbody counterweight

Load capacities in [t] with 29m main boom 65°, swinging counterweight 90°

Radius [m]	Jib length [m]						
	22.7	31.7	37.4	43.4	49.1	55.1	60.8
27.6	9.4						
34	7.2	6.8					
36	6.6	6.3					
38		5.8	5.6				
40		5.4	5.2	4.8			
42		5.0	4.8	4.4			
44		4.7	4.5	4.2	3.7		
46			4.2	3.9	3.5		
48			3.9	3.6	3.3	2.8	
50			3.6	3.4	3.1	2.6	2.2
55				2.8	2.6	2.2	
60					2.1		

34t swinging counterweight 90° and 17.5t carbody counterweight

Load capacities in [t] with 35m main boom 65°, swinging counterweight 90°

Radius [m]	Jib length [m]					
	22.7	31.7	37.4	43.4	49.1	
30.2	7.5					
36	6.0	5.5				
38	5.6	5.1				
40		4.8	4.4			
42		4.5	4.1			
44		4.1	3.8	3.4		
46		3.8	3.6	3.1	2.7	
48			3.3	2.9	2.5	
50			3.1	2.8	2.4	
55				2.3		

34t swinging counterweight 90° and 17.5t carbody counterweight

Load capacities in [t] with 38m main boom 65°, swinging counterweight 90°

Radius [m]	Jib length [m]					
	22.7	31.7	37.4	43.4	49.1	
31.4	6.7					
38	5.3	4.6				
40	4.9	4.3	3.9			
44		3.8	3.4	2.9		
46		3.6	3.2	2.7		
48		3.3	3.0	2.5	2.1	
50			2.8	2.4		
55				2.0		

34t swinging counterweight 90° and 17.5t carbody counterweight

Load capacities in [t] with 41m main boom 65°, swinging counterweight 90°

Radius [m]	Jib length [m]				
	22.7	31.7	37.4	43.4	
32.7	5.8				
38	4.9	4.1			
40	4.5	3.8			
42		3.6	3.2		
46		3.2	2.8	2.3	
48		3.0	2.6	2.1	
50		2.8	2.4		
55			2.0		

34t swinging counterweight 90° and 17.5t carbody counterweight

TLT 11943069 - M00000 V7. Above load charts are for reference only. For actual lift duty please refer to load chart in operator's cabin or manual. Otherwise we recommend you to plan your lifting job using Crane Planner 2.0.

# Load capacities with luffing jib

Load capacities in [t] with 17m main boom 45°, swinging counterweight 90°

Radius [m]	Jib length [m]								
	22.7	31.7	37.4	43.4	49.1				
32.8	7.6								
36	6.7								
42		5.1							
44		4.7							
46			4.2						
50			3.7	3.4					
55				2.9	2.7				
60					2.2				

34t swinging counterweight 90° and 17.5t carbody counterweight

Load capacities in [t] with 23m main boom 45°, swinging counterweight 90°

Radius [m]	Jib length [m]							
	22.7	31.7	37.4	43.4				
37	5.6							
40	5.0							
46		3.7						
48		3.5						
50			3.0					
55				2.3				

34t swinging counterweight 90° and 17.5t carbody counterweight

Load capacities in [t] with 29m main boom 45°, swinging counterweight 90°

Radius [m]	Jib length [m]						
	22.7	31.7					
41.3	4.0						
42	3.9						
44	3.6						
50		2.5					

34t swinging counterweight 90° and 17.5t carbody counterweight

Load capacities in [t] with 32m main boom 45°, swinging counterweight 90°

Radius [m]	Jib length [m]						
	22.7						
43.4	3.3						
44	3.2						
46	3.0						

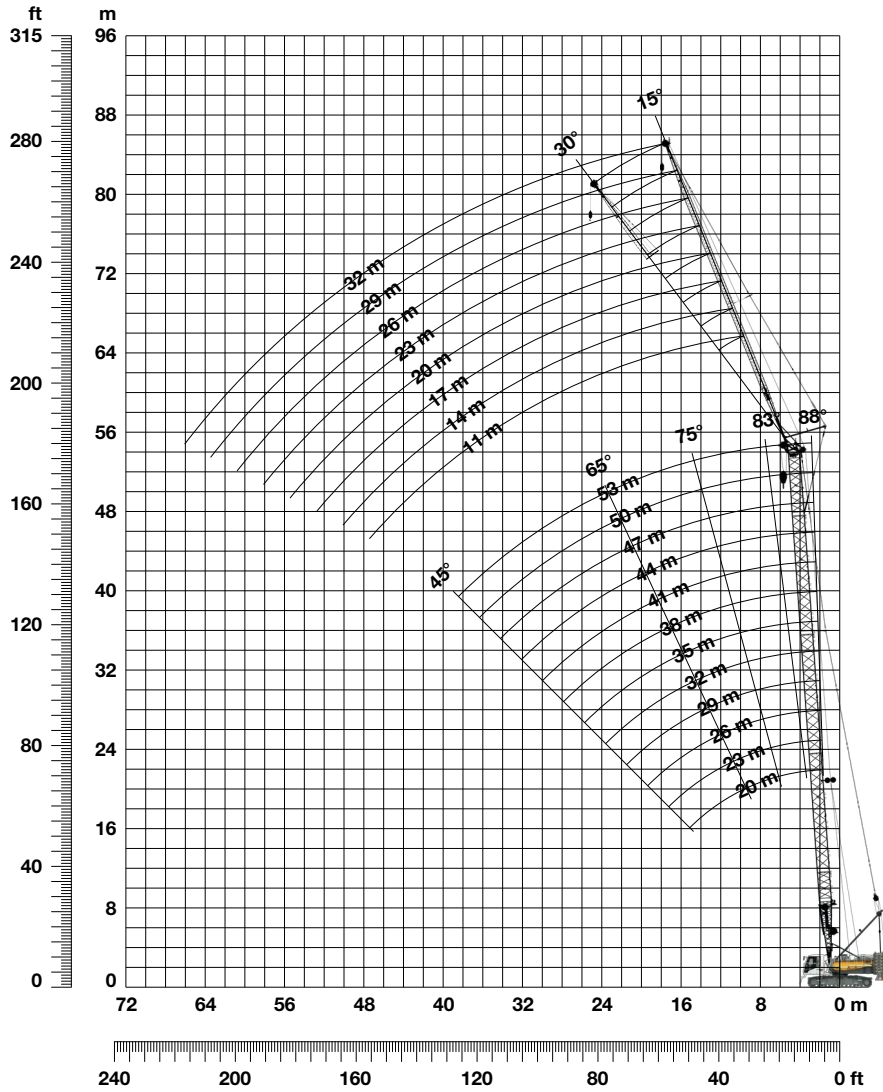
34t swinging counterweight 90° and 17.5t carbody counterweight

TLT 11943069 - M00000 V7. Above load charts are for reference only. For actual lift duty please refer to load chart in operator's cabin or manual. Otherwise we recommend you to plan your lifting job using Crane Planner 2.0.



# Fixed jib 0806.xx

## Jib lengths 11-32 m, standard counterweight



### Jib configuration 0806.xx

Jib section	Amount of jib sections								
	11	14	17	20	23	26	29	32	
Jib foot 5.5 m	1	1	1	1	1	1	1	1	
Jib section 3 m		1		1		1		1	
Jib section 6 m			1	1	2	2	3	3	
Jib head 5.5 m	1	1	1	1	1	1	1	1	
<b>Jib length [m]</b>	<b>11</b>	<b>14</b>	<b>17</b>	<b>20</b>	<b>23</b>	<b>26</b>	<b>29</b>	<b>32</b>	

For main boom configuration please refer to the table on page 10.

# Load capacities with fixed jib 15°

Load capacities in [t] with 20 m main boom

Radius [m]	Jib length [m]			
	11	20	26	32
5.1	22.8			
9	21.1	11.2		
12	20.0	10.4	7.6	
14	19.2	9.9	7.3	5.3
18	17.4	9.1	6.7	4.9
20	15.1	8.8	6.5	4.7
24	11.8	8.2	6.0	4.3
30	8.7	7.6	5.6	3.9
38		6.5	5.1	3.4
40			5.1	3.3
44			5.0	3.2
46				3.2

34t standard counterweight and 17.5t carbody counterweight

Load capacities in [t] with 26 m main boom

Radius [m]	Jib length [m]			
	11	20	26	32
5.3	22.2			
9	21.3	11.2		
12	20.4	10.5	7.6	
14	19.8	10.1	7.3	5.3
20	14.9	9.1	6.6	4.7
26	10.4	8.2	6.0	4.3
30	8.4	7.8	5.7	4.0
32	7.6	7.7	5.6	3.9
34	6.9	7.4	5.5	3.8
44		4.8	5.0	3.3
50			4.0	3.2
55				3.1

34t standard counterweight and 17.5t carbody counterweight

Load capacities in [t] with 29 m main boom

Radius [m]	Jib length [m]			
	11	20	26	32
5.4	21.5			
9	20.8	10.9		
12	19.9	10.4	7.4	
14	19.4	10.0	7.2	5.2
20	14.7	9.0	6.5	4.7
28	9.2	8.1	5.8	4.1
32	7.5	7.7	5.6	3.9
34	6.8	7.2	5.4	3.8
36	6.2	6.6	5.4	3.6
40		5.6	5.2	3.5
50			3.9	3.1
58				2.9

34t standard counterweight and 17.5t carbody counterweight

Load capacities in [t] with 32 m main boom

Radius [m]	Jib length [m]			
	11	20	26	32
5.5	21.1			
10	20.2	10.7		
12	19.8	10.4	7.3	
14	19.3	10.1	7.1	5.1
22	12.8	8.9	6.3	4.5
32	7.3	7.8	5.6	3.9
42		5.0	5.2	3.5
44		4.6	4.8	3.4
46		4.2	4.4	3.3
48		3.8	4.1	3.3
55			3.0	3.1
60				2.6

34t standard counterweight and 17.5t carbody counterweight

Load capacities in [t] with 38 m main boom

Radius [m]	Jib length [m]			
	11	20	26	32
5.7	20.6			
10	19.7	10.6		
12	19.3	10.3	7.0	
14	19.0	10.0	6.8	
22	12.5	9.0	6.3	4.5
32	7.1	7.6	5.7	4.0
42	4.3	4.7	4.9	3.6
44	3.9	4.3	4.5	3.5
46		3.9	4.2	3.4
48		3.6	3.8	3.4
55			2.8	3.0
60			2.2	2.4

34t standard counterweight and 17.5t carbody counterweight

Load capacities in [t] with 44 m main boom

Radius [m]	Jib length [m]			
	11	20	26	32
5.9	18.4			
10	18.0	9.9		
12	17.7	9.8	6.3	
16	17.2	9.5	6.1	4.4
28	8.5	8.4	5.6	4.0
38	4.9	5.4	5.3	3.7
40	4.5	4.9	5.1	3.6
48	2.9	3.3	3.5	3.3
50	2.6	3.0	3.2	3.3
55		2.3	2.5	2.7
58				2.3
60				2.1

34t standard counterweight and 17.5t carbody counterweight

Load capacities in [t] with 50 m main boom

Radius [m]	Jib length [m]			
	11	20	26	32
6.1	17.0			
10	16.6	9.0		
13	16.3	8.9	5.8	
16	16.0	8.8	5.7	4.1
22	11.3	8.5	5.5	3.9
30	7.3	7.6	5.2	3.8
32	6.5	6.9	5.2	3.7
38	4.7	5.2	5.0	3.6
44	3.3	3.8	4.0	3.4
50	2.3	2.7	3.0	3.1
55		2.1	2.3	2.5
58				2.1

34t standard counterweight and 17.5t carbody counterweight

Load capacities in [t] with 53 m main boom

Radius [m]	Jib length [m]			
	11	20	26	32
6.2	15.5			
10	15.2	8.2		
13	14.9	8.1	5.4	
16	14.6	8.0	5.3	3.8
22	11.0	7.8	5.1	3.6
30	7.0	7.4	4.9	3.5
38	4.5	5.0	4.7	3.4
46	2.8	3.3	3.5	3.2
48	2.5	2.9	3.2	3.2
50	2.2	2.6	2.8	3.0
55			2.1	2.3
57				2.1

34t standard counterweight and 17.5t carbody counterweight

Load capacities in [t] with 59 m main boom

Radius [m]	Jib length [m]			
	11	14	17	20
6.4	13.0			
8	12.9	10.3		
9	12.9	10.3	8.2	
10	12.8	10.2	8.2	6.9
13	12.6	10.1	8.0	6.8
20	11.8	9.8	7.8	6.7
28	7.3	7.5	7.6	6.6
36	4.7	4.8	4.9	5.0
40	3.7	3.8	4.0	4.0
44	2.9	3.0	3.2	3.2
48	2.2	2.3	2.5	2.6
50		2.0	2.2	2.3

34t standard counterweight and 17.5t carbody counterweight

TLT 11943069 - M236250. Above load charts are for reference only. For actual lift duty please refer to load chart in operator's cabin or manual. Otherwise we recommend you to plan your lifting job using Crane Planner 2.0.

# Load capacities with fixed jib 30°

Load capacities in [t] with 20 m main boom

Radius [m]	Jib length [m]			
	11	20	26	32
7.7	19.4			
14	17.4	8.8		
18	15.9	8.2	6.2	
22	13.5	7.9	5.9	4.2
24	12.0	7.9	5.8	4.1
26	10.8	7.6	5.7	3.9
28	9.7	7.4	5.6	3.8
30	8.7	7.2	5.4	3.7
38		6.4	4.8	3.4
40			4.7	3.3
42			4.6	3.3
50				3.2

34t standard counterweight and 17.5t carbody counterweight

Load capacities in [t] with 26 m main boom

Radius [m]	Jib length [m]			
	11	20	26	32
7.9	19.1			
14	17.8	8.8		
18	16.1	8.3	6.2	
22	13.3	8.0	6.0	4.2
24	11.8	7.9	5.9	4.1
26	10.6	7.9	5.8	4.0
28	9.5	7.7	5.7	3.9
32	7.7	7.3	5.5	3.7
34	7.0	7.1	5.3	3.6
44		4.9	4.7	3.4
50			4.1	3.3
55				3.2

34t standard counterweight and 17.5t carbody counterweight

Load capacities in [t] with 29 m main boom

Radius [m]	Jib length [m]			
	11	20	26	32
8	18.6			
16	16.6	8.5		
20	15.1	8.1	6.1	
24	11.7	7.9	5.8	4.0
26	10.4	7.8	5.7	3.9
28	9.4	7.7	5.6	3.8
32	7.6	7.4	5.5	3.7
34	6.9	7.3	5.4	3.6
36	6.3	6.8	5.3	3.5
38	5.7	6.3	5.2	3.5
46		4.4	4.7	3.3
59				2.9

34t standard counterweight and 17.5t carbody counterweight

Load capacities in [t] with 32 m main boom

Radius [m]	Jib length [m]			
	11	20	26	32
8.1	18.5			
16	16.5	8.5		
20	15.0	8.2	6.0	
24	11.6	7.8	5.8	4.0
28	9.2	7.8	5.7	3.9
32	7.5	7.5	5.5	3.7
36	6.1	6.7	5.3	3.6
38	5.6	6.2	5.2	3.5
40	5.1	5.6	5.2	3.5
46		4.3	4.6	3.3
55			3.1	3.2
60				2.7

34t standard counterweight and 17.5t carbody counterweight

Load capacities in [t] with 38 m main boom

Radius [m]	Jib length [m]			
	11	20	26	32
8.4	17.9			
16	16.3	8.5		
20	14.6	8.2	6.0	
24	11.4	7.9	5.8	4.0
30	8.1	7.7	5.6	3.8
36	5.9	6.5	5.4	3.6
42	4.4	5.0	5.2	3.5
44	4.0	4.5	4.8	3.4
46	3.6	4.1	4.4	3.4
55		2.6	2.9	3.2
60			2.2	2.5
64				2.0

34t standard counterweight and 17.5t carbody counterweight

Load capacities in [t] with 44 m main boom

Radius [m]	Jib length [m]			
	11	20	26	32
8.6	16.8			
16	15.9	8.3		
20	13.9	8.1	5.7	
24	11.0	7.8	5.6	3.9
32	7.0	7.5	5.4	3.7
36	5.7	6.3	5.3	3.6
40	4.6	5.2	5.2	3.5
44	3.7	4.3	4.6	3.4
46	3.3	3.9	4.2	3.4
55		2.4	2.7	3.0
60			2.1	2.3
62				2.1

34t standard counterweight and 17.5t carbody counterweight

Load capacities in [t] with 50 m main boom

Radius [m]	Jib length [m]			
	11	20	26	32
8.8	15.5			
16	14.1	8.1		
20	12.8	8.0	5.4	
24	10.5	7.6	5.3	3.8
26	9.4	7.5	5.3	3.7
28	8.5	7.2	5.3	3.7
30	7.6	6.9	5.3	3.6
34	6.1	6.5	5.1	3.6
40	4.4	5.0	4.8	3.5
55		2.2	2.5	2.8
58			2.1	2.4
60				2.1

34t standard counterweight and 17.5t carbody counterweight

Load capacities in [t] with 53 m main boom

Radius [m]	Jib length [m]			
	11	20	26	32
8.9	14.4			
16	13.5	7.9		
20	12.3	7.8	5.0	
24	10.2	7.4	5.0	3.6
26	9.2	7.3	5.0	3.6
28	8.2	7.1	5.0	3.5
30	7.4	6.8	5.0	3.5
34	5.9	6.3	4.9	3.5
36	5.3	5.9	4.8	3.4
44	3.3	4.0	4.3	3.3
55		2.1	2.4	2.7
60				2.0

34t standard counterweight and 17.5t carbody counterweight

Load capacities in [t] with 59 m main boom

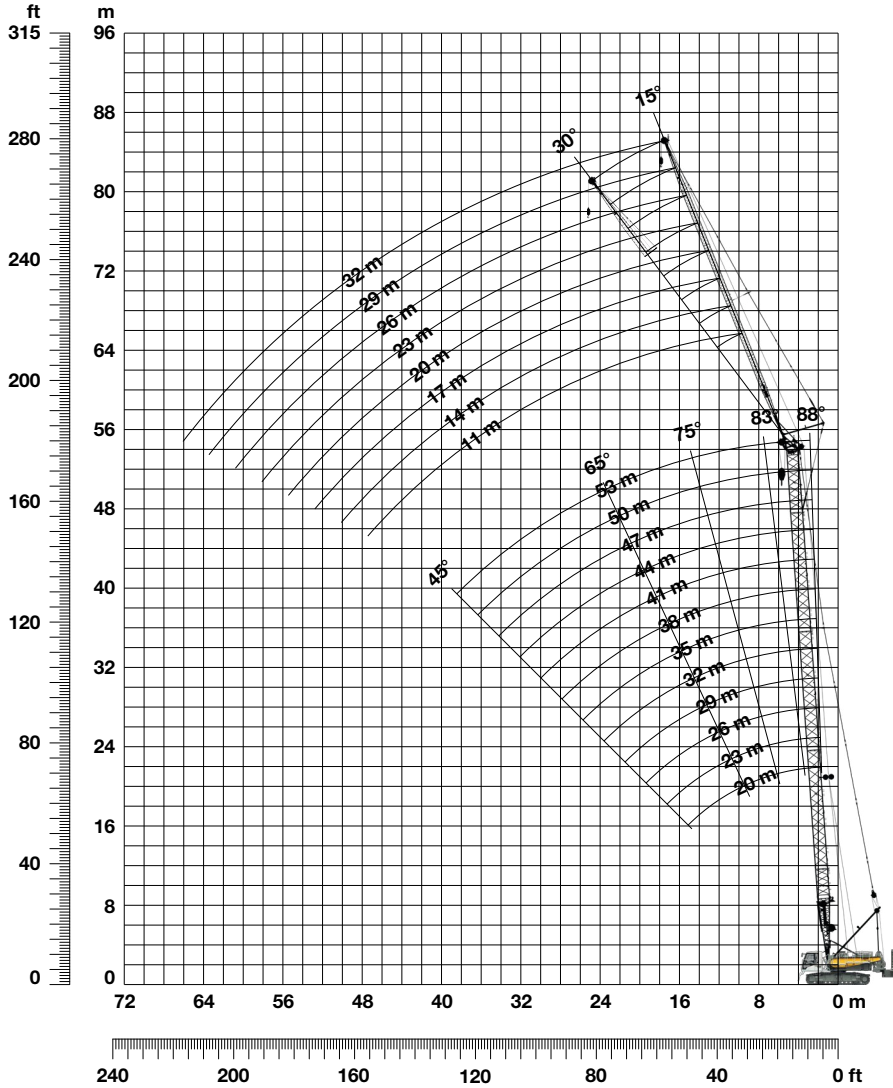
Radius [m]	Jib length [m]			
	11	14	17	20
9.1	12.4			
11	12.4	10.0		
13	12.3	10.0	8.0	
18	11.8	9.9	8.0	6.9
20	11.5	9.7	8.0	6.9
28	7.7	8.0	7.6	6.9
36	4.9	5.2	5.9	5.5
44	3.1	3.3	3.5	3.6
46	2.5	2.9	3.1	3.3
48	2.2	2.6	2.8	2.9
50		2.2	2.4	2.6
53				2.1

34t standard counterweight and 17.5t carbody counterweight

TLT 11943069 - M236250. Above load charts are for reference only. For actual lift duty please refer to load chart in operator's cabin or manual. Otherwise we recommend you to plan your lifting job using Crane Planner 2.0.

# Fixed jib 0806.xx

Jib lengths 11-32 m, swinging counterweight 90°



## Jib configuration 0806.xx

Jib section	Amount of jib sections							
	11	14	17	20	23	26	29	32
Jib foot 5.5m	1	1	1	1	1	1	1	1
Jib section 3m		1		1		1		1
Jib section 6m			1	1	2	2	3	3
Jib head 5.5m	1	1	1	1	1	1	1	1
<b>Jib length [m]</b>	<b>11</b>	<b>14</b>	<b>17</b>	<b>20</b>	<b>23</b>	<b>26</b>	<b>29</b>	<b>32</b>

For main boom configuration please refer to the table on page 10.

# Load capacities with fixed jib 15°

Load capacities in [t] with 20 m main boom

Radius [m]	Jib length [m]			
	11	20	26	32
17	18.0			
20	17.0	8.8		
22	15.1	8.5	6.2	
24	13.5	8.2	6.0	4.3
26	21.5	7.9	5.9	4.2
28	10.9	7.8	5.7	4.0
30	9.9	7.6	5.6	3.9
34		7.4	5.3	3.6
38		7.1	5.1	3.4
42			5.0	3.3
44			5.0	3.2
50				3.1

34t swinging counterweight 90°, 17.5t carbody counterweight

Load capacities in [t] with 26 m main boom

Radius [m]	Jib length [m]			
	11	20	26	32
15	19.5			
18	18.3	9.4		
20	16.9	9.1	6.6	
22	14.9	8.8	6.4	4.6
24	13.2	8.5	6.2	4.4
26	11.8	8.2	6.0	4.3
30	9.7	7.8	5.7	4.0
32	8.8	7.7	5.6	3.9
34	8.1	7.6	5.5	3.8
44		5.7	5.1	3.3
50			4.6	3.2
55				3.1

34t swinging counterweight 90°, 17.5t carbody counterweight

Load capacities in [t] with 29 m main boom

Radius [m]	Jib length [m]			
	11	20	26	32
14	19.4			
18	18.2	9.3		
20	16.7	9.0	6.5	4.7
22	14.7	8.8	6.3	4.5
24	13.1	8.6	6.1	4.4
26	11.7	8.3	6.0	4.2
30	9.5	7.9	5.7	4.0
32	8.7	7.7	5.6	3.9
34	7.9	7.6	5.4	3.8
44		5.6	5.0	3.3
50			4.6	3.1
55				3.1

34t swinging counterweight 90°, 17.5t carbody counterweight

Load capacities in [t] with 32 m main boom

Radius [m]	Jib length [m]			
	11	20	26	32
14	19.3			
18	18.6	9.5	6.7	
20	16.6	9.2	6.5	4.7
22	14.6	8.9	6.3	4.5
26	11.5	8.4	6.0	4.3
32	8.5	7.9	5.6	3.9
38	6.5	6.9	5.3	3.6
42		5.9	5.2	3.5
46		5.0	5.0	3.3
48		4.6	4.8	3.3
55			3.7	3.1
60				3.1

34t swinging counterweight 90°, 17.5t carbody counterweight

Load capacities in [t] with 38 m main boom

Radius [m]	Jib length [m]			
	11	20	26	32
14	19.0			
16	18.5	9.8		
20	16.2	9.3	6.4	4.6
24	12.7	8.8	6.2	4.4
30	9.1	8.2	5.8	4.1
36	6.8	7.3	5.5	3.8
42	5.2	5.6	5.2	3.6
44	4.7	5.2	5.1	3.5
46		4.8	5.0	3.4
55			3.5	3.2
60			2.8	3.0
65				2.4

34t swinging counterweight 90°, 17.5t carbody counterweight

Load capacities in [t] with 44 m main boom

Radius [m]	Jib length [m]			
	11	20	26	32
12	17.7			
16	17.2	9.5	6.1	
20	15.5	9.1	5.9	4.3
24	12.4	8.7	5.8	4.1
28	9.9	8.4	5.6	4.0
34	7.2	7.5	5.4	3.8
40	5.4	5.9	5.2	3.6
48	3.7	4.1	4.3	3.3
50	3.3	3.8	4.0	3.3
55		3.0	3.2	3.2
60			2.5	2.7
65				2.2

34t swinging counterweight 90°, 17.5t carbody counterweight

Load capacities in [t] with 50 m main boom

Radius [m]	Jib length [m]			
	11	20	26	32
12	16.4			
14	16.2	8.8		
16	16.0	8.8	5.7	
18	15.3	8.7	5.6	4.0
20	14.2	8.6	5.6	4.0
22	13.2	8.5	5.5	3.9
30	8.6	7.9	5.2	3.8
34	6.9	7.0	5.2	3.7
40	5.1	5.6	4.9	3.5
55	2.3	2.7	2.9	2.9
60		2.1	2.3	2.5
64				2.0

34t swinging counterweight 90°, 17.5t carbody counterweight

Load capacities in [t] with 53 m main boom

Radius [m]	Jib length [m]			
	11	20	26	32
10	15.2			
16	14.6	8.0	5.3	3.8
20	13.4	7.9	5.2	3.7
24	11.5	7.7	5.0	3.6
26	10.3	7.6	5.0	3.6
28	9.3	7.5	4.9	3.5
30	8.4	7.5	4.9	3.5
34	6.8	6.8	4.8	3.4
36	6.1	6.3	4.8	3.4
44	4.0	4.5	4.4	3.3
60			2.2	2.3
62				2.1

34t swinging counterweight 90°, 17.5t carbody counterweight

Load capacities in [t] with 59 m main boom

Radius [m]	Jib length [m]			
	11	14	17	20
10	12.8			
14	12.5	10.0	8.0	6.8
18	12.2	9.8	7.9	6.8
24	10.7	9.4	7.7	6.6
28	8.8	8.9	7.6	6.6
32	7.1	7.3	7.4	6.5
36	5.8	5.9	6.0	5.9
40	4.7	4.9	5.0	5.0
44	3.7	3.9	4.1	4.2
48	3.0	3.1	3.3	3.4
52	2.3	2.5	2.6	2.7
55		2.0	2.2	2.3

34t swinging counterweight 90°, 17.5t carbody counterweight

TLT 11943069 - M236250. Above load charts are for reference only. For actual lift duty please refer to load chart in operator's cabin or manual. Otherwise we recommend you to plan your lifting job using Crane Planner 2.0.

# Load capacities with fixed jib 30°

Load capacities in [t] with 20 m main boom

Radius [m]	Jib length [m]			
	11	20	26	32
19	15.4			
20	14.9			
22	14.1			
24	13.3	7.9		
26	12.2	7.6	5.7	
28	11.0	7.4	5.6	3.8
30	10.0	7.2	5.4	3.7
34		6.7	5.2	3.5
38		6.4	4.8	3.4
42			4.6	3.3
44			4.5	3.3
50				3.2

34t swinging counterweight 90°, 17.5t carbody counterweight

Load capacities in [t] with 26 m main boom

Radius [m]	Jib length [m]			
	11	20	26	32
17	16.4			
18	16.1			
20	15.3			
22	14.7	8.0		
24	13.4	7.9	5.9	
26	12.0	7.9	5.8	4.0
30	9.8	7.5	5.6	3.8
32	8.9	7.3	5.5	3.7
34	8.1	7.1	5.3	3.6
44		5.8	4.7	3.4
50			4.5	3.3
55				3.2

34t swinging counterweight 90°, 17.5t carbody counterweight

Load capacities in [t] with 29 m main boom

Radius [m]	Jib length [m]			
	11	20	26	32
17	16.2			
18	15.9			
20	15.2			
22	14.6	8.0		
24	13.3	7.9	5.8	
26	11.9	7.8	5.7	3.9
30	9.7	7.5	5.6	3.8
32	8.8	7.4	5.5	3.7
34	8.0	7.3	5.4	3.6
44		5.7	4.8	3.3
50			4.6	3.3
55				3.2

34t swinging counterweight 90°, 17.5t carbody counterweight

Load capacities in [t] with 32 m main boom

Radius [m]	Jib length [m]			
	11	20	26	32
16	16.5			
18	15.7			
20	15.2	8.2		
22	14.4	8.0		
26	11.8	7.8	5.7	4.0
32	8.7	7.5	5.5	3.7
38	6.6	7.0	5.2	3.5
42		6.0	5.0	3.4
46		5.1	4.8	3.3
48		4.7	4.7	3.3
55			3.8	3.2
60				3.2

34t swinging counterweight 90°, 17.5t carbody counterweight

Load capacities in [t] with 38 m main boom

Radius [m]	Jib length [m]			
	11	20	26	32
15	16.6			
16	16.3			
20	15.1	8.2		
24	13.0	7.9	5.8	4.0
30	9.4	7.7	5.6	3.8
36	7.0	7.2	5.4	3.6
42	5.3	5.8	5.2	3.5
44	4.8	5.4	5.1	3.4
46	4.4	4.9	5.0	3.4
55		3.3	3.6	3.3
60			2.9	3.1
65				2.5

34t swinging counterweight 90°, 17.5t carbody counterweight

Load capacities in [t] with 44 m main boom

Radius [m]	Jib length [m]			
	11	20	26	32
14	16.4			
16	15.9			
20	14.8	8.1		
24	12.8	7.8	5.6	3.9
28	10.1	7.7	5.5	3.8
34	7.4	7.2	5.4	3.7
40	5.5	6.2	5.2	3.5
48	3.8	4.3	4.6	3.4
50	3.4	3.9	4.2	3.3
55		3.1	3.4	3.2
60		2.4	2.7	2.9
65				2.3

34t swinging counterweight 90°, 17.5t carbody counterweight

Load capacities in [t] with 50 m main boom

Radius [m]	Jib length [m]			
	11	20	26	32
13	15.1			
14	15.0			
16	14.1			
18	13.4	8.1		
20	12.8	8.0	5.4	
22	12.0	7.8	5.3	
30	8.9	6.9	5.3	3.6
34	7.2	6.5	5.1	3.6
40	5.3	5.7	4.8	3.5
55	2.4	2.9	3.2	3.2
60		2.2	2.5	2.7
65				2.1

34t swinging counterweight 90°, 17.5t carbody counterweight

Load capacities in [t] with 53 m main boom

Radius [m]	Jib length [m]			
	11	20	26	32
13	14.2			
16	13.5			
20	12.3	7.8	5.0	
24	10.9	7.4	5.0	3.6
26	10.4	7.3	5.0	3.6
28	9.7	7.1	5.0	3.5
30	8.8	6.8	5.0	3.5
34	7.1	6.3	4.9	3.5
36	6.4	6.0	4.8	3.4
44	4.2	4.8	4.3	3.3
60		2.0	2.4	2.6
65				2.0

34t swinging counterweight 90°, 17.5t carbody counterweight

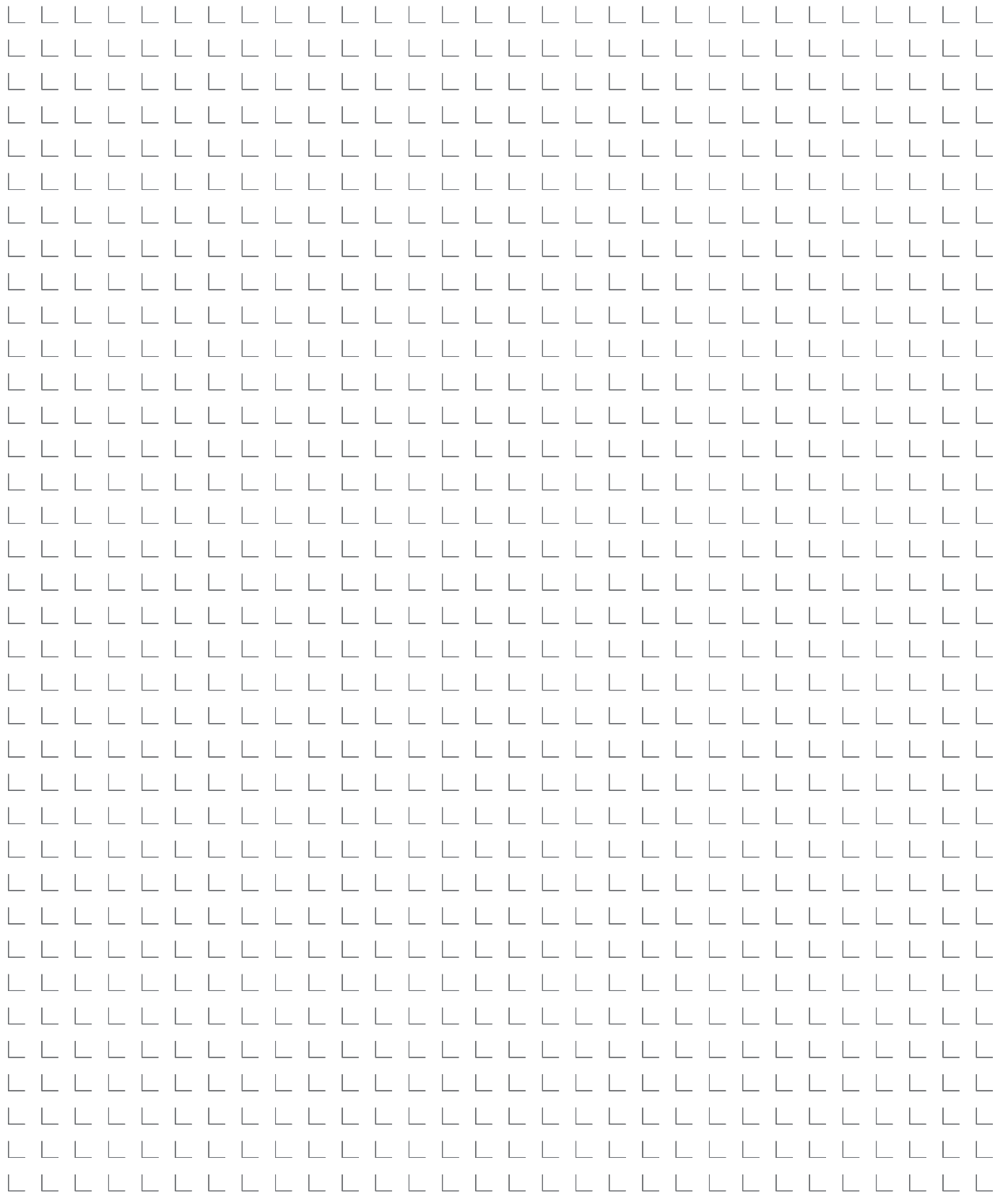
Load capacities in [t] with 59 m main boom

Radius [m]	Jib length [m]			
	11	14	17	20
12	12.7			
14	12.3	10.0		
18	11.8	9.9	8.0	6.9
24	10.5	9.3	7.9	6.9
28	9.2	8.6	7.6	6.9
32	7.5	7.7	7.1	6.4
36	6.1	6.3	6.5	6.0
40	4.9	5.1	5.4	5.3
44	3.9	4.2	4.4	4.6
48	3.1	3.3	3.5	3.7
52	2.4	2.6	2.8	3.0
55		2.2	2.4	2.5

34t swinging counterweight 90°, 17.5t carbody counterweight

TLT 11943069 - M236250. Above load charts are for reference only. For actual lift duty please refer to load chart in operator's cabin or manual. Otherwise we recommend you to plan your lifting job using Crane Planner 2.0.









Download datasheet



Please contact us.

Liebherr-Werk Nenzing GmbH · Dr. Hans Liebherr Str. 1 · 6710 Nenzing, Austria  
Phone +43 50809 41-473 · crawler.crane@liebherr.com · www.liebherr.com  
facebook.com/LiebherrConstruction