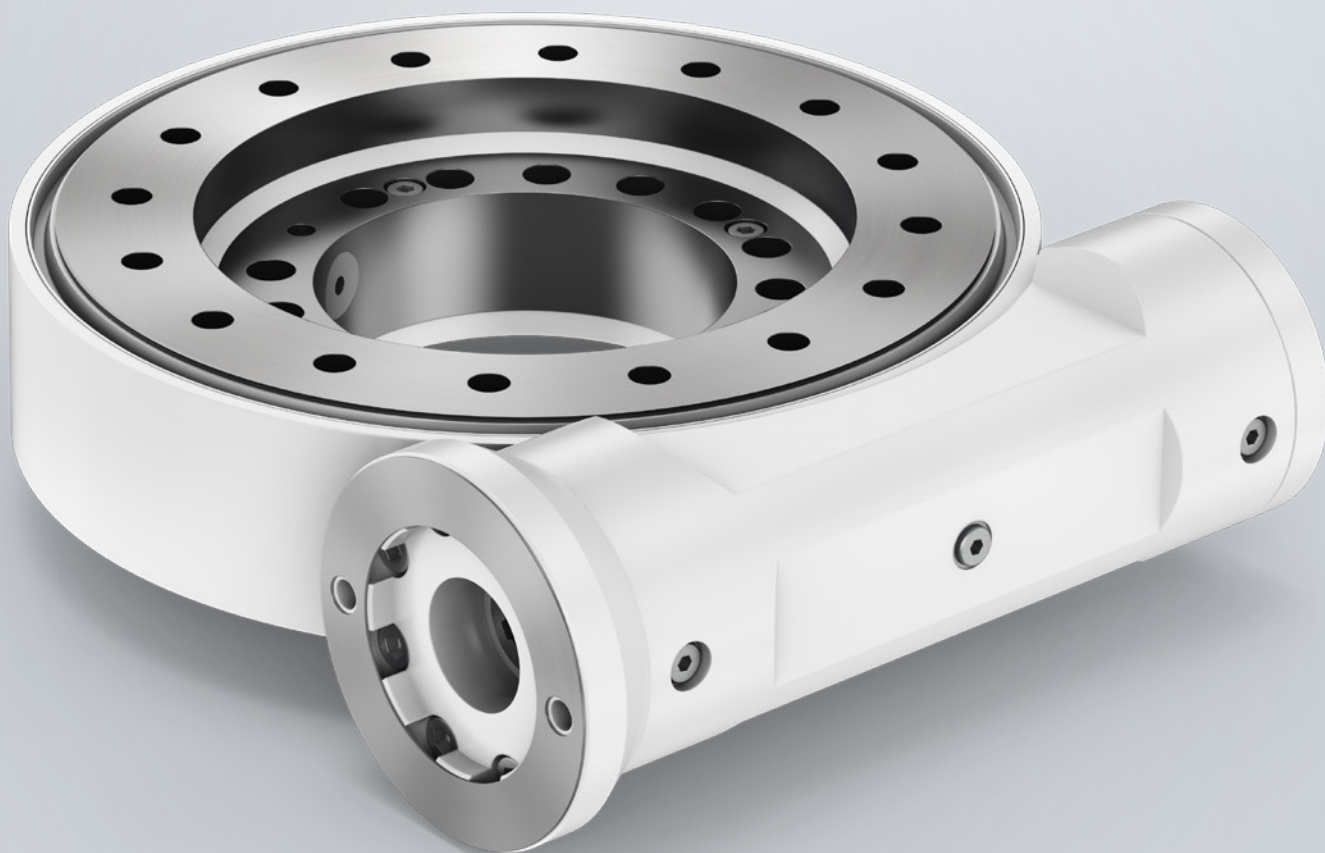

Short description

Ball bearing worm slew drives

LIEBHERR

Slewing bearings
Slew drives



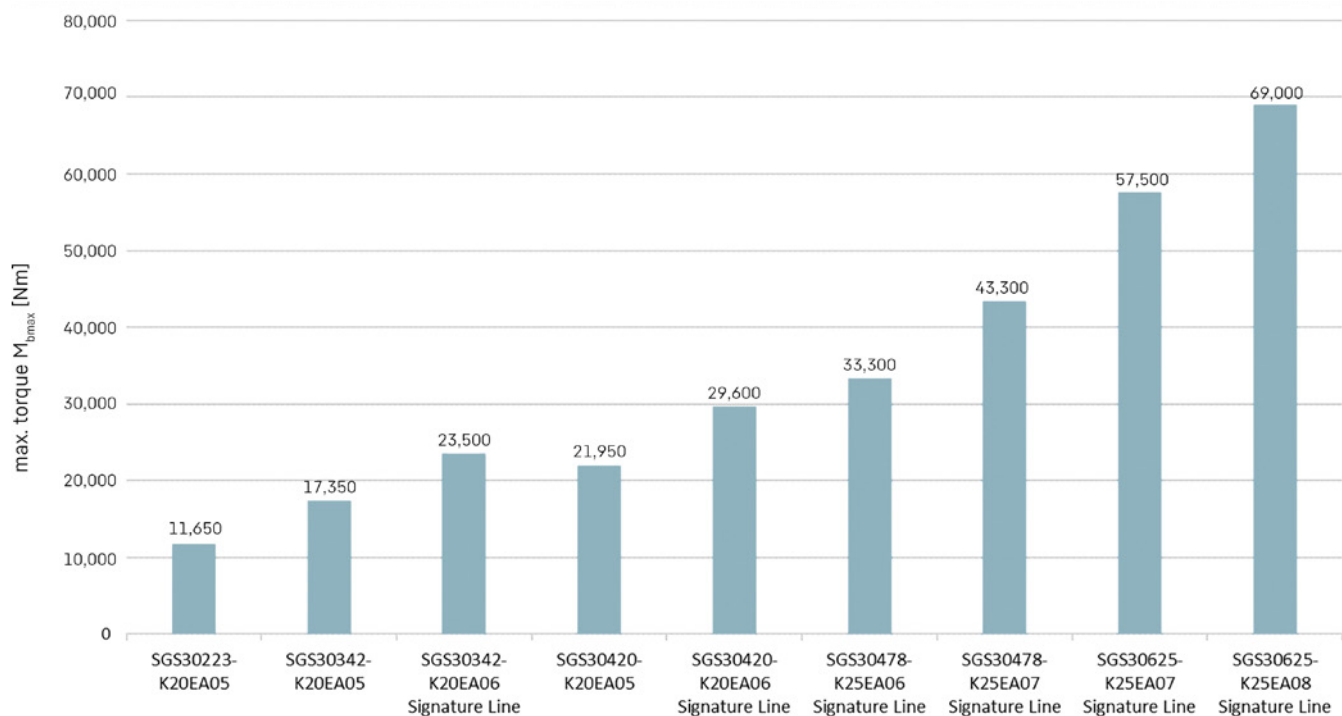
Liebherr worm slew drives

The compact worm drives are characterised by their high power density. The worm gearing ensures that the torque is transmitted to the slewing ring. This design is particularly suitable when high forces are acting and less space is available, for example as a steering gear for the chassis of cranes and heavy-duty vehicles, in loading cranes, or in agricultural machines.

The following pages give you an overview of our series and their performance.

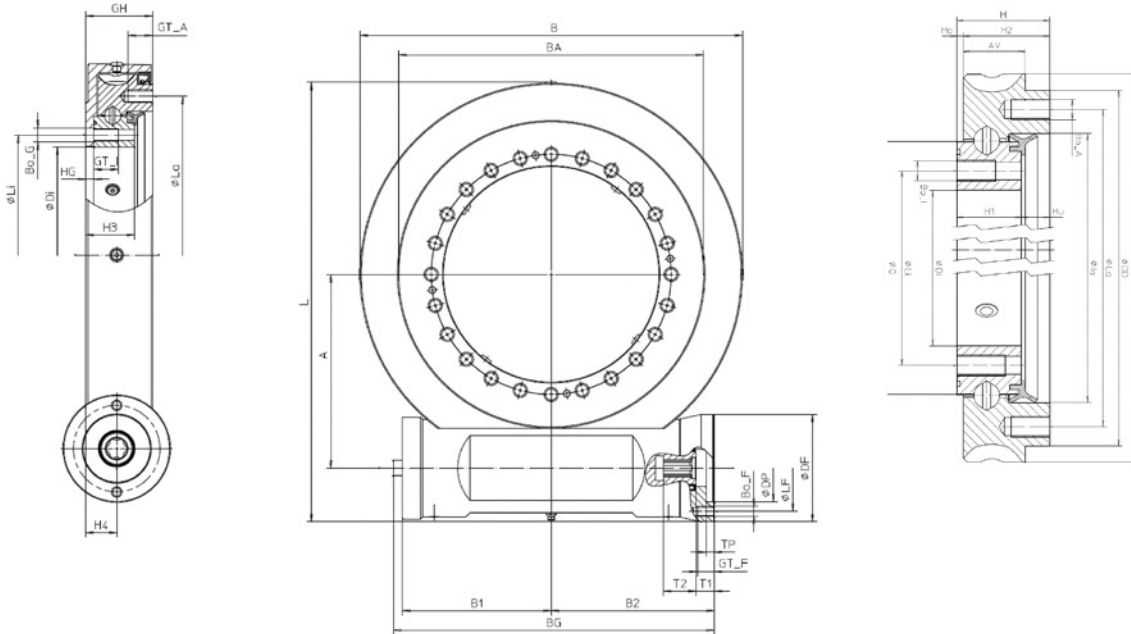
Maximum torque in a small space

Our series at a glance



The Liebherr Signature Line stands for individualised, high-performance products.

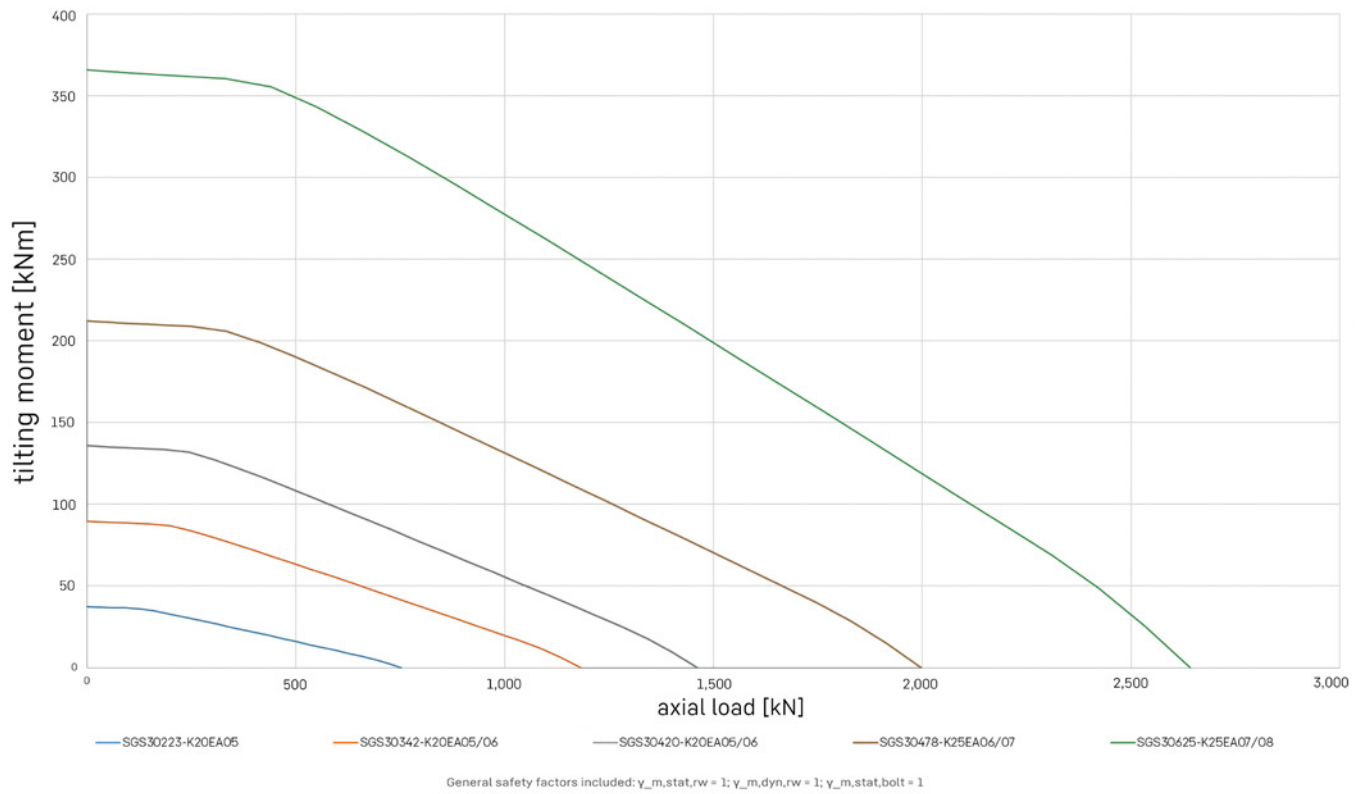
Technical data



Type	SGS 30223-K20EA 05	SGS 30342-K20EA 05	SGS 30342-K20EA 06	SGS 30420-K20EA 05	SGS 30420-K20EA 06	SGS 30478-K25EA 06	SGS 30478-K25EA 07	SGS 30625-K25EA 07	SGS 30625-K25EA 08
Size/pitch diameter [mm]	223	342	342	420	420	478	478	625	625
Ratio (i)*	62	86	71	104	86	93	79	104	91
Maximum torque (M_{bmax}) [Nm]	9,150	12,750	23,500	15,300	29,600	33,300	43,300	57,500	69,000
Nominal torque (M_{bnom}) [Nm]	6,000	13,300	14,200	21,370	22,500	28,200	30,100	54,300	54,300
Load rating static. radial (C_{rad}) [N]	303,120	476,263	476,263	588,351	588,351	806,618	806,618	1,066,573	1,066,573
Load rating static. axial (C_{ax}) [N]	635,870	999,081	999,081	1,234,212	1,234,212	1,692,082	1,692,082	2,237,402	2,237,402
Dynamic load rating. radial (C_{rad}) [N]	193,221	230,218	230,218	249,066	249,066	360,457	360,457	400,212	400,212
Dynamic load rating. axial (C_{ax}) [N]	183,528	219,213	219,213	237,375	237,375	343,404	343,404	381,673	381,673
Weight motor [kg]	60	69	70	88	91	126	128	228	232
Motor type**	OMP 200	OMP 315	OMH 315	OMR 250	OMH 315	OMH 400	OMT 500	OMT 500	
Pressure differential Δp [bar]**	140	110	151	138	166	140	144	144	
Oil flow Q [l/min.]**	15	33	30	32	39	45	44	58	
Output speed n [1/min.]	1	1	1	1	1	1	1	1	1
Number of screws, inner ring	15	24	24	20	20	31	31	24	24
Number of screws, outer ring	16	18	18	20	20	32	32	24	24
DL [mm]	223	342	342	420	420	478	478	625	625
Da [mm]	325	445	444	535	534	576	574	749	752
DD [mm]	320	420	420	525	525	560	560	746	746
La [mm]	270	390	390	479	479	520	520	675	675
la [mm]	225	353	353	424	424	486	486	633	633
Di [mm]	145	265	265	324	324	380	380	525	525
Li [mm]	175	295	295	365	365	420	420	565	565
O [mm]	220	340	340	418	418	476	476	623	623
Bo_l	17*	M16	M16	M16	M16	M16	M16	M20	M20
Bo_A	M16	M16	M16	M16	M16	M16	M16	M20	M20
H [mm]	72	72	72	70	70	91	91	110	110
H2 [mm]	62	67	67	66	66	86	86	105	105
Ho [mm]	10	5	5	6	6	5	5	5	5

Limit load diagram

Limit load diagram [rw static]



Components



Diesel engines



Fuel injection systems



Axial piston hydraulics



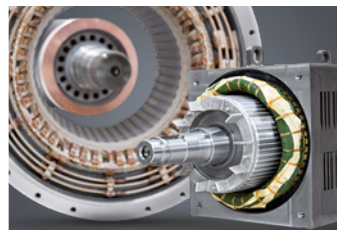
Hydraulic cylinders



Slewing bearings



Gearboxes and winches



Electric machines



Remanufacturing



Human-machine interfaces and gateways



Control electronics and sensor technology



Power electronics



Control cabinets



Software

From A to Z – the component product segment of the Liebherr Group offers a broad range of solutions in the areas of mechanical, hydraulic, electric and electronic drive system and control technology. The efficient components and systems are produced at ten production sites worldwide to the highest quality standards. The central point of contact for all product lines are available to our customers at Liebherr-Component Technologies AG and the regional sales and distribution branches.

Liebherr is your partner for joint success: from the product idea to its development, production and commissioning right through to customer service solutions like remanufacturing.

components.liebherr.com

LIEBHERR

Liebherr-Components AG · Post box 222 · 5415 Nussbaumen, Switzerland
+41 56 296 43 00 · components@liebherr.com · www.liebherr.com