

Press release

Marcor Stevedoring receives new LHM 800

- Mobile harbour crane of type LHM 800 has arrived at Marcor's Hartel Terminal to serve as logistical bridge between the port's quay and storage warehouses for dry bulk cargo
- The crane will support a larger infrastructure at Marcor Stevedoring B.V. that handles approximately six million tonnes of loose, bagged and containerized bulk cargoes annually
- A lifting capacity of 104 tonnes and SmartGrip technology enable the LHM 800 to increase the handling rate as the system utilises the grab capacity in full

The new LHM 800 fits into the strategic growth of the terminal's expansion, with its focus on more sustainable operations by using more renewable energy and cleaner drive concepts. A second LHM 800 has also been ordered and is scheduled to be shipped to Marcor later this year. The Hartel Terminal has a 130,000 m² terminal and a 600-metre quay with a 16-metre draft alongside. It has vessel handling options from barges up to 120,000 DWT baby-cape vessels, both for board-to-board transshipment and discharge to/from the terminal.

Rostock (Germany), March 2024 – Contributing to a greener bulk industry. And no Diesel engine is needed. The LHM 800 will do its work without generating additional local emissions and will also feature a quieter noise profile. Under ideal operating conditions, upwards of 2,000 tonnes of dry bulk capacity can be achieved. A boom length of 64 metres and eye-level height of 30.8 metres help ensure that the crane can optimally load cargo between the quay and storage facilities. Further technical innovations help meet the terminal's present and future needs. The crane's electric drive unit, ergonomic cabin, and more digital features like touch panel pave the way for future assistance and partial automation systems. These advantages make the crane's operation more efficient, saving time and money for the operator.

The LHM 800 will be used for handling dry bulk commodities such as agri-bulk, biomass, fertilizers, and mineral bulk cargoes. The crane will increase the throughput and efficiency of the terminal, which is expected to reach 10 million tonnes per year by 2025.

Growing need for logistical capacity

Growth in the green infrastructure sector also requires growth in logistics capacities. Marcor operates primarily in the discharge, loading, storage, and treatment of dry bulk commodities including agri-bulk, biomass, concentrates and ores, industrial minerals, jumbo bags, and other bulk. Ship-to-ship operations are also part of their services. And the market size and growth are significant both in the region and globally.

In 2023, the throughput of dry bulk cargo at the Port of Rotterdam reached approximately 64 million metric tonnes. In 2022, the EU consumed a total of nearly 14.83 metric tonnes per capita of raw materials including biomass, metal ores, non-metallic minerals, and fossil energy materials. According to a report of the World Bank, the European mineral raw materials industry demonstrated a considerable

increase in the production of minerals needed for clean energy technologies. A wide range of minerals and metals for implementing renewable energy strategies and their related infrastructure are part of what is driving this growth. These include copper, lithium, nickel, cobalt, graphite, and more.

The LHM 800 is part of this growth strategy. The floating terminal in Rotterdam is supported by the expansion of the dry bulk terminal at the Hartel Terminal. This expansion has required redevelopment and construction of new and high-end storage facilities. Sustainable and efficient storage and stevedoring operations are being phased in at the site.

“With the LHM 800, we have gained a competitive edge in the dry bulk market,” comments Danny Swart, Director of Marcor Stevedoring. “It is a versatile and powerful machine that can handle any type of cargo, from ore to grains and fertilizers. It also reduces our fuel consumption and emissions, which is in line with our sustainability goals.”

Smarter bulk handling

One of the assistance systems that aids in optimal bulk operation is Liebherr’s in-house-developed SmartGrip technology. The system optimises the grab entry angle and adapts to the bulk material in use without the need to change the grab. When used, SmartGrip also fills the grab based on an optimum load graph, which reduces overload and its effects on the crane’s structure. In the end, these features help save time and required energy for the operations.

Marcor Stevedoring and Liebherr are partners in progress, moving the dry bulk industry forward with their innovative and sustainable solutions.

About Liebherr-MCCtec Rostock GmbH

Liebherr-MCCtec Rostock GmbH is one of the leading European manufacturers of maritime handling solutions. The product range includes ship, mobile harbour and offshore cranes. Reach stackers and components for container cranes are also included in the product portfolio.

About the Liebherr Group

The Liebherr Group is a family-run technology company with a highly diversified product portfolio. The company is one of the largest construction equipment manufacturers in the world. It also provides high-quality and user-oriented products and services in a wide range of other areas. The Liebherr Group includes over 140 companies across all continents. In 2022, it employed more than 50,000 staff and achieved combined revenues of over 12.5 billion euros. Liebherr was founded in Kirchdorf an der Iller in Southern Germany in 1949. Since then, the employees have been pursuing the goal of achieving continuous technological innovation, and bringing industry-leading solutions to its customers.

Images



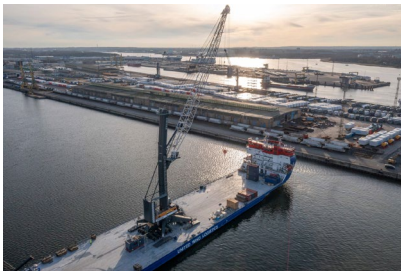
liebherr-lhm-800-marcor-hartel-1.jpg

The LHM 800, the flagship model of Liebherr's mobile harbour crane portfolio, is loaded onto the MV Bravewind via RoRo method for its delivery to the Marcor Hartel Terminal.



liebherr-lhm-800-marcor-hartel-2.jpg

The region is a major hub for the global dry bulk trade, handling commodities such as coal, iron ore, agri-bulk, and biomass, which are essential for the energy, steel, and food sectors.



liebherr-lhm-800-marcor-hartel-3.jpg

A milestone for Marcor and Liebherr: This LHM 800 is the first crane of its kind to operate with an all-electric drive system. With its 64-metre reach and peak dry bulk operating capacity exceeding 2,000 tonnes per hour, it perfectly aligns with Marcor's bulk, bagged and containerized stevedoring operations.



liebherr-lhm-800-marcor-hartel-4.jpg

The LHM 800 has been successfully delivered to the Marcor Hartel Terminal, enhancing the terminal's operational capacity with its advanced, electric drivetrain and significant load handling capabilities. PHOTO CREDIT: Peter Van Geest

Contact

Mathias Haugner
Marketing Manager – Maritime Cranes
Phone: +49 38160 / 0650 - 36
E-Mail: mathias.haugner@liebherr.com

Published by

Liebherr-MCCtec Rostock GmbH
Rostock / Germany
www.liebherr.com