

---

# Second hand but still first class

---

Used cranes from the manufacturer

**LIEBHERR**

Mobile and crawler cranes



# The Liebherr bonus package





## Used cranes from the manufacturer

### **More for your money!**

Enormous, light as a feather, extraordinarily strong and invisible. That is a description of the package that every Liebherr customer receives as a bonus when buying a crane. And it is not limited to new cranes, but also applies to used cranes. The package simply contains more. More for you. It is far from easy to provide a precise description of the contents of this special Liebherr package.

### **Famous – not infamous**

One widely known and immensely important component of it is our after-sales. Wherever you are in the world, we provide you with support in the form of well-trained, local service personnel and a round-the-clock hotline to our manufacturing plant in Ehingen – throughout the lifetime of your crane. We are the manufacturer and that makes us experts, familiar with every nut and bolt on your crane. We supply genuine Liebherr spare parts so that your Liebherr remains a Liebherr. We apply the same quality and reliability standards to our used cranes as we do to our new cranes.

### **Better safety every time**

In addition, we guarantee safety even before delivery. Liebherr provides you with support for commercial matters such as finance. We help with the export and import of your crane, develop an efficient logistics concept for large cranes and take care of specific national acceptance procedures. We also offer technical assistance, instruct you on your machine and provide support at its first job. You can take advantage of a very wide range of training courses from us to ensure that you use your crane as safely and economically as possible. If accident-damaged machines are returned to us, we deal with the insurance.

### **We've saved the best for last – a direct line**

Our workforce is our greatest asset – they are reliable, helpful and will support you with their expertise. Personal contact creates mutual trust to form long term partnerships. Our trained personnel have lots of experience and have great contacts throughout the crane world. We can help you with whatever problem you have. That is the Liebherr bonus package – crammed full with services and help.

# Second hand but still first class



## **Full power**

Bridge building in France with an eight year old used LR 1600/2.

# The perfect crane for everybody

## Not new, but smart

Liebherr is one of the largest used crane dealers in the world. Whether you want nearly new or old, large or small, with a lattice or telescopic boom – Liebherr has the perfect used crane to suit your needs. With technical expertise and decades of experience, our repair specialists spruce up the cranes to the level required by the customer.

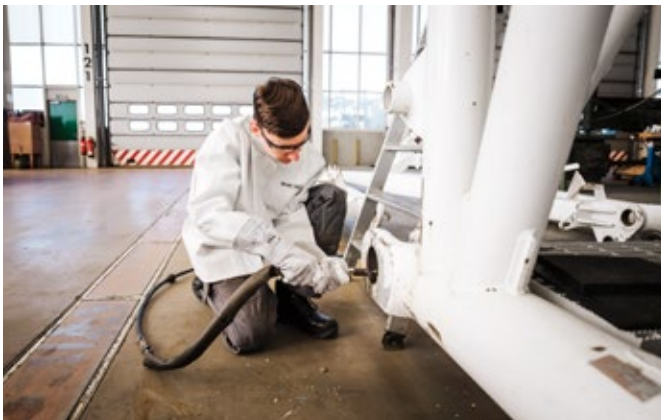
## Just between us

The machines feature tested quality, short lead times and require lower finance levels. Liebherr cranes are durable and retain their value well.

Depending on the crane and requirement, used cranes may be sold as seen, can be repaired or completely refurbished and supplied with a warranty. Fairly recent machines are upgraded by Liebherr so that they feature the latest technology. That makes them nearly new – a genuine alternative.

## Accident? We'll take care of your insurance

Liebherr takes used mobile and crawler cranes in part exchange. Secure, reliable and on fair terms. It takes something special for the condition of a crane to surprise us. We have experience with cranes that have suffered damage through accidents. As one of the largest used crane dealers in the world, we can then provide you with professional support. If you want, we will even take care of the insurance processing. A good deal for you.



Every crane is given an individual, professional final polish before delivery



Expert engine refurbishment by Liebherr specialists



Liebherr personnel with experience, skill and expertise check every part of used cranes



Repairs using genuine Liebherr parts to ensure reliable quality

# You decide – we make it happen!

## Whatever you want

Every crane has a story. Together we can continue to write that story – and give it a happy ending. You decide the final status of your used crane with our experts so that it meets your requirements. Some of the possible services are listed below. Which of them do you want?

### ✓ Safety check

- Assessment by our crane experts
- Record of current status
- Inspections of the superstructure and undercarriage

### ✓ Premium refurbishment

- Acceptance procedures in compliance with TÜV standards/accident prevention regulations, carried out on the basis of national regulations, possible before delivery or at the first operating site
- CE certification is possible depending on the age of the crane
- All components whose condition could adversely affect operation and function in the long term can be replaced or refurbished
- Inspection and acceptance procedure for the machine identical to a new crane
- New tyres, repainting and signwriting
- Warranty for a Liebherr used crane



✓ **Liebherr update**

- Technological update for fairly recent Liebherr cranes up to current standards
- Installation of optional equipment
- Retrofitting to meet current standards, for example by installing fall protection equipment
- Adjustment to meet national regulations



# Skilful repairs

## Make old into new

Every used crane is repaired by us individually and to meet the customer's requirements. Experts test and inspect load-bearing components and welds. They dismantle winches, brakes and engines to clean, repair or replace individual components. Damaged sections of telescopic

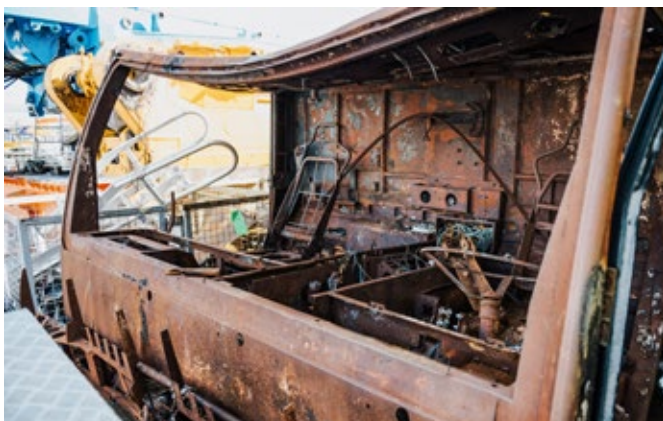
booms are not repaired but are replaced in full as we attach a great deal of value to ensuring maximum safety and quality. You receive expertise from the manufacturer for the repair work on your used crane.



Refurbishment of lattice sections and equipment components



Preparation of a frame section for repairs after an accident



Restoration after fire damage



Slewing ring inspection with subsequent replacement





Detailed inspection and acceptance procedure for the components



Professional brake refurbishment



Manufacturer's expertise for the engine refurbishment



Hoist rope and winch inspection for the check to meet accident prevention regulations under §26 BGV D6



Reconditioning of a telescopic boom

# Second hand components



**Second hand? A used part is fine as well.**

In addition to our extensive range of new and replacement parts, we also have a range of used parts. The benefit of used parts is that they can be reused without requiring extensive preparation.

All parts are fully functional. The only difference is their age and condition.

By using used parts, you can make a valuable contribution to protecting natural resources and our environment. That is what second hand is all about.

Please ask us for your individual quotation for our used parts.

**Examples from our portfolio of used parts**



Individual telescopic sections or telescope extensions



Counterweights in a range of versions



Load hooks and hook blocks in a range of versions



Equipment parts such as lattice sections, auxiliary booms and folding jibs

# Fine art in the workshop



### **This is where cranes are revamped**

Our professionals have to cast their eyes over a second hand crane before it can be described as first class. Depending on what the customer wants, they carry out repair, installation, polishing and modernisation work on the cranes. The majority of the repairs are carried out by professionally equipped Liebherr service centres throughout the world. These have a direct line to the manufacturing plant in Echingen and attend regular training courses. That means that wherever in the world you purchase a used crane from a Liebherr service centre, you can always rest assured that you will receive the familiar high Liebherr standards.

### **At the scene: Echingen**

We spruce up every single one. In Echingen even the most complicated cases are brought to a highly polished conclusion. Around 60 highly trained personnel take care of repair work at the manufacturing plant. These are people with lots of experience, technical expertise and unrestricted access to every crane component as well as all the documentation and drawings. Furthermore, the same equipment, machine tools and specialist tools used for crane production can be used for the repair work. You benefit your used crane delivering maximum quality and safety.

## **From accident-damaged crane to jewel**



Repair of an accident-damaged crane



Complete dismantling of the crane



Replacement of the superstructure engine and repair of the turntable



Assembly after component refurbishment

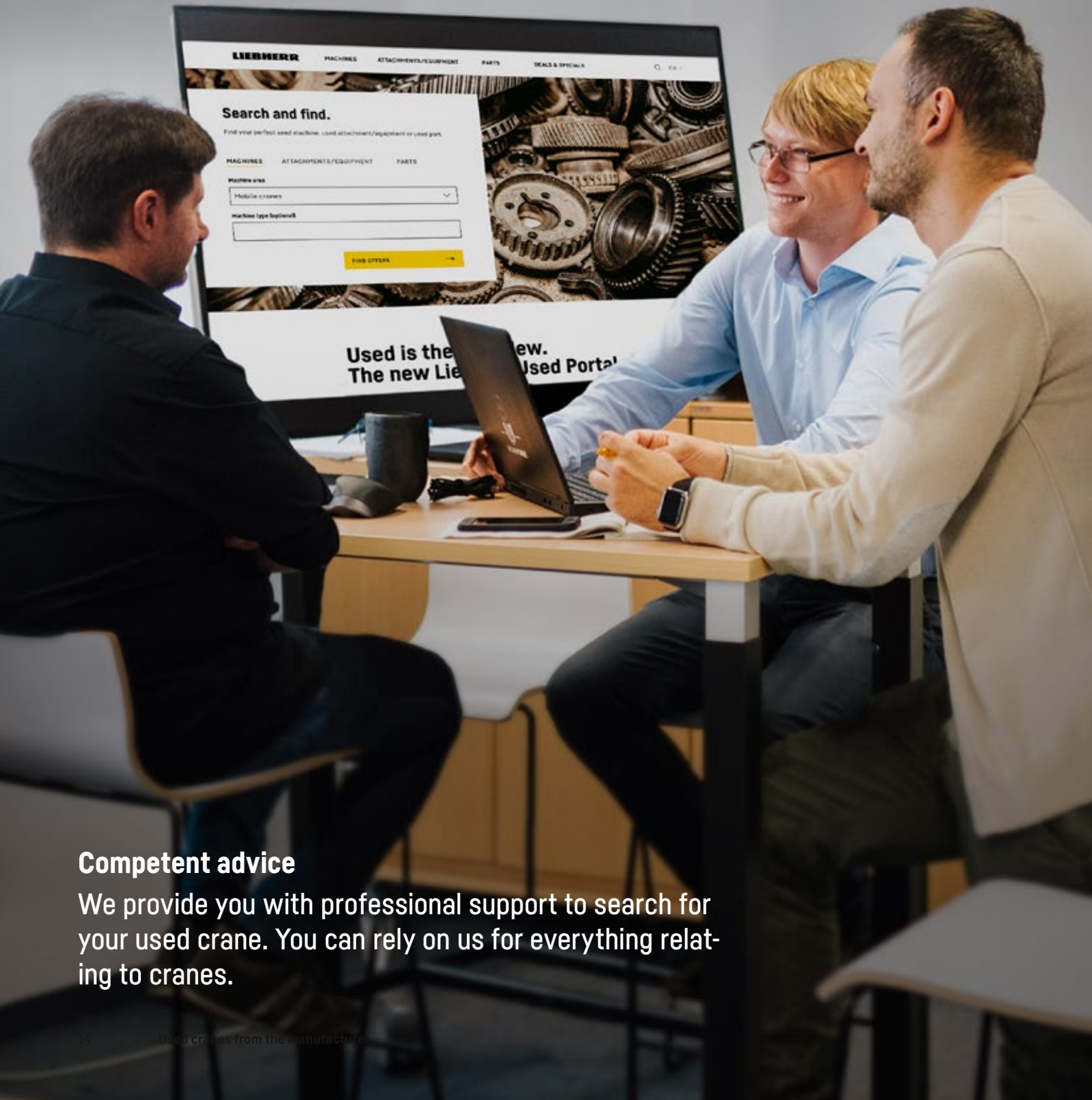


The refurbished LTM 1130-5.1 leaves the repair building



The refurbished, resprayed used crane en route to its new owner

# Our used crane portal



## Competent advice

We provide you with professional support to search for your used crane. You can rely on us for everything relating to cranes.

# The largest selection of used cranes in the world

## Our treasure chest

The range of used cranes available for sale changes constantly. Our online portal contains the very latest information. Liebherr has the largest selection of used cranes in the world – mobile and crawler cranes in all sizes, with telescopic or lattice booms, nearly new or perhaps a little older. In addition to genuine Liebherr cranes, we also supply cranes from other manufacturers. It's always worthwhile taking a look.

## Personal crane search engine

Using the smart filter features in the Liebherr used crane portal enables you to find out what is available even faster. Every machine includes photographs, information on the crane location, its year of manufacture, number of operating hours and contact data. You can save the machines you are interested in on your personal list. You can also display comparisons between selected cranes quickly and easily on the screen.



**Why not take a look now.**  
[liebherr.com/used-cranes](http://liebherr.com/used-cranes)



Our experts are available to provide the answers to all your questions about used cranes



Professional induction training and general training courses are also available for your used Liebherr crane

# Customer Service

Personal. Competent. Reliable.



## To ensure your Liebherr remains a Liebherr.

- Commission and training by experienced service technicians
- Worldwide service network with over 80 branches
- 24/7 technical support worldwide
- Fast availability of spare parts
- Attractive packages for maintenance and service

Subject to modification

Liebherr-Werk Echingen GmbH · Postfach 1361 · 89582 Echingen, Germany  
+49 73 91 5 02-0 · [www.liebherr.com](http://www.liebherr.com)

Get Your  
Contact



Printed in Germany (1)  
lwe-ps89-02-e06-2021