

Heavy lift handling in Rostock

TCC 78000



LIEBHERR

TCC 78000



Applications

Heavy lift handling from:

- Shore to ship
- Ship to shore
- Ship to ship

Industries

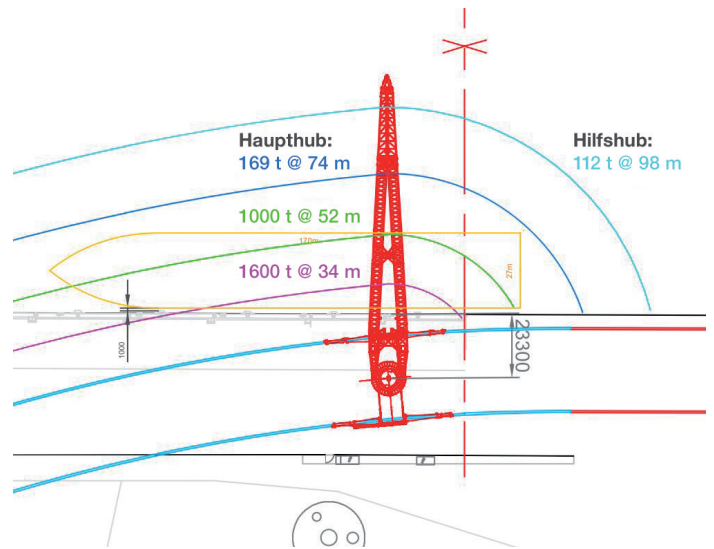
- Offshore industry
- Shipbuilding industry
- Industrial plant construction
- Logistics industry
- Heavy loads sector

Characteristics

The rail-mounted heavy duty crane TCC 78000 moves over 420 metres on a portal between the Liebherr-MCCtec Rostock GmbH factory site and the adjacent quayside. Equipped with a double trolley (two rails per side) and a rail gauge of 30 metres, the gantry crane provides optimum flexibility for handling all types of large-sized goods.

Customer Benefits

- Handling by experienced operating and service personnel
- Optimal positioning of the cargo due to size of the gantry (portal: 17 m clearance, 30 m track width)
- Designed for travelling with load
- Access for offshore and special vessels with a draught of up to 10,80 m
- Unobstructed view to the load
- Strategically well-placed land and sea connections



Specifications

Max. lifting capacity:	1,600 t
Main hook:	1,600 t at 34 m
Auxiliary hook 1:	500 t at 32 m
Auxiliary hook 2:	25 t at 105 m
Max. lifting height:	112 m
Slewing range:	360°
Drive system:	electro-hydraulic

Liebherr-MCCtec Rostock GmbH

Liebherrstraße 1, D-18147 Rostock/GERMANY
 Tel.: +49 381 6006 5020
 www.liebherr.com, E-Mail: offshore.crane@liebherr.com
 www.facebook.com/LiebherrMaritime