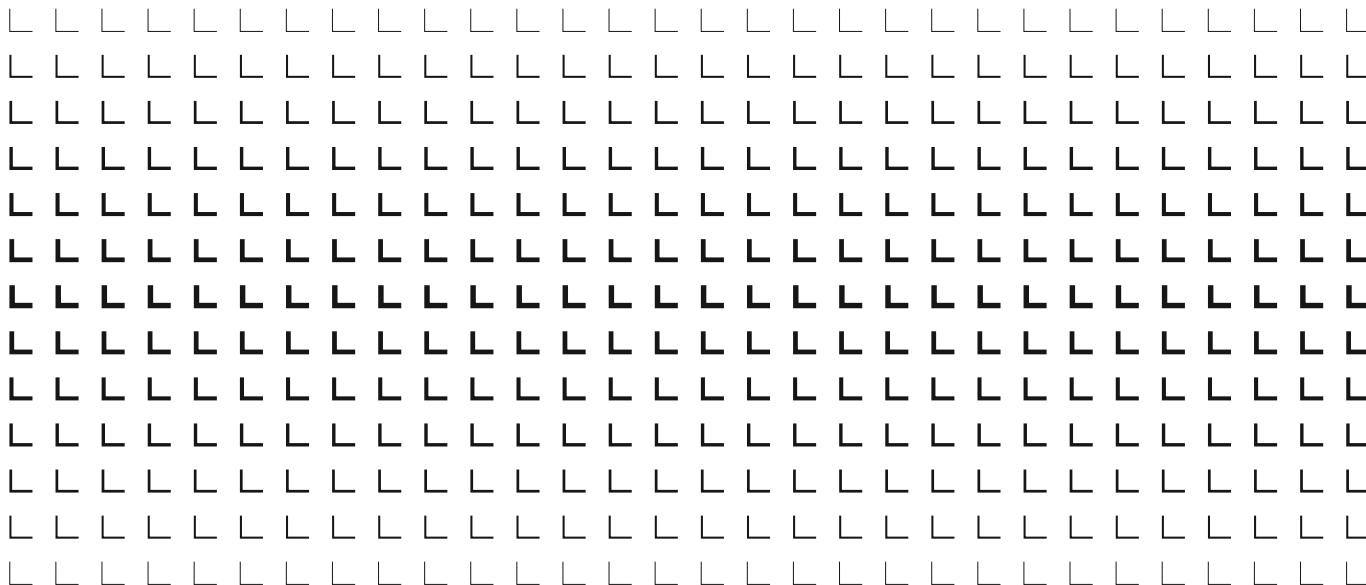

Product range

LIEBHERR

The Group



Products and services of the Liebherr Group

Earthmoving machines

- 6 Hydraulic excavators
- 8 Articulated dump trucks
- 10 Wheel loaders
- 12 Crawler tractors, crawler loaders and pipe layers
- 14 Telescopic handlers

Material handling technology

- 16 Material handling technology

Deep foundation machines

- 18 Deep foundation machines
- 20 Duty cycle crawler cranes

Mining

- 22 Mining machines and technology

Tower cranes

- 24 Tower cranes
- 26 Mobile construction cranes

Concrete technology

- 28 Truck mixers and stationary mixing plants
- 30 Concrete pumps

Mobile and crawler cranes

- 32 Mobile cranes
- 34 Crawler cranes

Maritime cranes

- 36 Port equipment
- 38 Ship, floating and offshore cranes

Aerospace and transportation Systems

- 40 Aerospace
- 42 Transportation systems

Gear technology and automation systems

- 44 Gear cutting machines, Gear cutting tools
and metrology
- 46 Automation systems

Components

- 48 Combustion engines and injection systems
- 50 Hydraulic and mechanical drive technology
- 52 Electric drive technology and electronics

Refrigeration and freezing

- 54 Domestic appliances – Household
- 56 Domestic appliances – Commercial

Hotels

- 58 Hotels of the Liebherr Group

Liebherr Group

- 60 Product segments of the Liebherr Group
- 62 Locations of Liebherr companies
- 64 Summary of Group companies

Short profile

The Liebherr Group

Founded in 1949 by Hans Liebherr, today the Liebherr Group includes over 140 companies on all continents and employs approximately 50,000 staff.

The Liebherr Group is a family-run technology company with a highly diversified product range. The company is one of the largest construction equipment manufacturers in the world, but also provides high-quality, user-friendly products and services in many other areas. The parent company of the Liebherr Group is Liebherr-International AG with its registered office in Bulle, Switzerland. All its shareholders are members of the Liebherr family. Long-term success, sustainable development, stability and reliability are part of the company.

Liebherr is a pioneer. It is with this pioneering spirit that the company makes a decisive contribution to the technology history in many industries and already dedicates itself today to challenges that customers will face tomorrow. The Liebherr Group develops and manufactures an enormous variety of fascinating products, which have made their mark on global markets on account of their high precision, excellent implementation and longevity. The understanding of

key technologies allows the company to also offer its customers customized solutions – the highest quality standards apply here and at Liebherr the focus is always on customer satisfaction.

Employees all over the world share the courage of the company's founder to explore uncharted territory and achieve objectives which initially seem inconceivable. They are united by their passion for technology and fascinating products, as well as the determination to provide excellent solutions for their customers and constantly redefine the limits of what is possible. The joint work on fascinating tasks creates strong cohesion which the employees can rely on – beyond national borders and continents.



Main locations of the Liebherr companies

11,639

Turnover in million €

742

Investments in million €

49,611

Employees

> 40

Production companies

> 140

Companies

13

Product segments



Hydraulic excavators

Since the start of the 1950s hydraulic excavators have been an important component in the Liebherr product range. Today the offer includes machines with operating weights between 10 tonnes and 100 tonnes, which are manufactured in Colmar (France) and Kirchdorf an der Iller (Germany).

Efficient and modern

These high performing, reliable crawler and wheeled excavators come in a size range to suit a whole host of applications. All machines set standards for efficiency and cost effectiveness with their modern technology. They impress with their high fuel efficiency, are environmentally-friendly, easy to service and operate, and are distinguished by their high availability and long service life.

With the Litronic equipment the hydraulic excavators from Liebherr have a useful combination of intelligent electronics and functional hydraulics. All important systems of the excavator are controlled, regulated, coordinated and monitored centrally.

Diverse application possibilities

Liebherr hydraulic excavators are used in civil engineering, road construction and tunnelling, in water management, in horticulture and landscaping, in demolition, as well as in the mining industry. Diverse equipment options offer customised solutions for special tasks.

The optimal tool for every operation

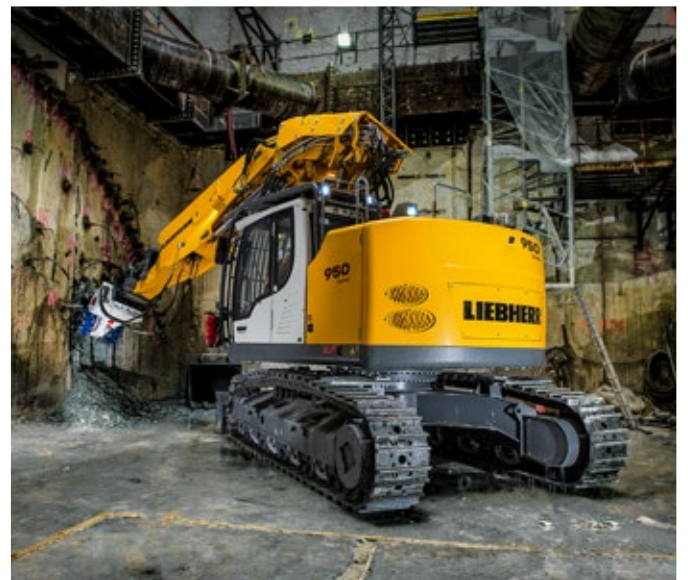
Liebherr develops and manufactures innovative tool attachments/implements and quick coupler systems according to the highest quality standards. The product portfolio ranges from quick coupler systems to excavation tools through to grabs for diverse applications. The choice of the appropriate tool attachment/implement has a significant impact on the success of a project. This is why Liebherr developed numerous tool attachments/implements, which are optimally adapted in their shape, properties and technical equipment to the respective application and machine size. Findings from the field and continuous development ensure that Liebherr tool attachments/implements always correspond to the state of the art.



The A 914 Litronic with LIKUFIX® quick coupler system and tilting bucket used in gardening and landscaping



The A 922 Rail Litronic used for installing a noise barrier



The R 950 Tunnel crawler excavator on the construction site of the Grand Paris Express (France)



The crawler excavator R 960 used for the demolition of a silo in Frévent (France)

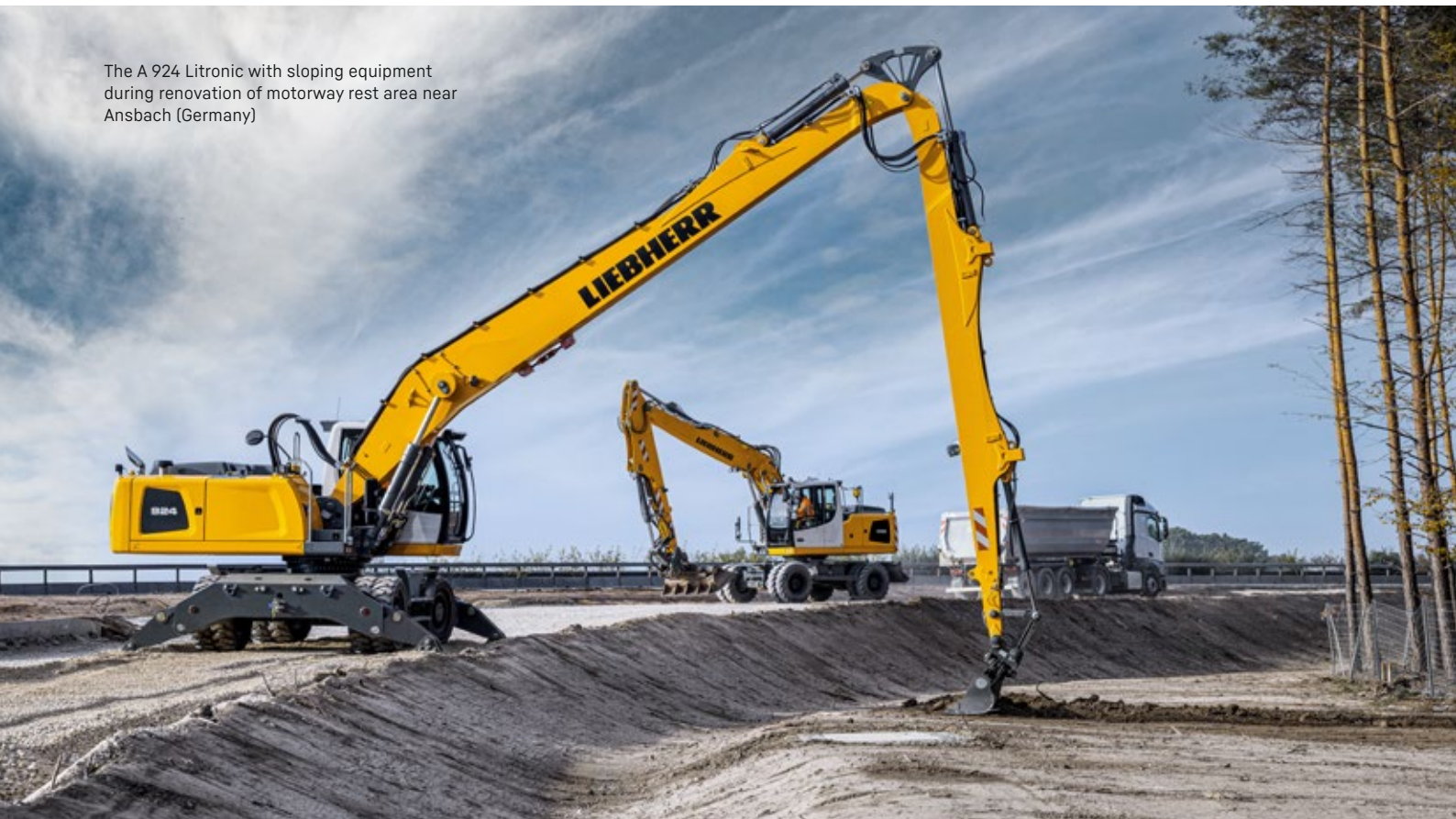


The A 918 Litronic for earthmoving work in Regensburg (Germany)



The crawler excavator R 938 in use in a quarry in Metzeral (France)

The A 924 Litronic with sloping equipment during renovation of motorway rest area near Ansbach (Germany)



Articulated dump truck

With the TA 230 Litronic, Liebherr-Hydraulikbagger GmbH in Kirchdorf (Germany) expands its product portfolio with the new generation of articulated dump trucks with new components, sophisticated technology and a modern design.

Optimal machine concept

The articulated dump truck impresses with a clever machine concept, which was developed specially for demanding applications. Equipped with the best off-road driving characteristics and a newly designed pit, it ensures maximum performance and productivity. A modern cab with extensive all-round glazing, as well as a short, sloped hood, enable an optimal view of the driving and working area of the machine at any time, as well as the area around the articulated joint. Modern assist systems also support the machine operator, thus increasing the safety and comfort during operation.

The articulated dump truck is primarily used for transporting excavated material as well as in the extraction industry. The machine is also perfect for special applications in industry as well as in tunnel construction.



The modern operator's cab of the TA 230 Litronic



The TA 230 Litronic deployed for transporting excavated material



Wheel loaders

Liebherr-Werk Bischofshofen GmbH (Austria) develops, produces and sells wheel loaders of the Liebherr Group. The plant in the state of Salzburg has grown steadily over the decades thanks to sustainable innovations, creative solutions and high quality standards. With these strengths, and a well-balanced product portfolio, the company at Bischofshofen is on track for a successful future.

Comprehensive product range in four different wheel loader categories

The product range is continuously being extended and includes numerous models in four different product groups: compact loaders, stereoloaders, medium and large wheel loaders, which impress with their innovative drive concepts. The modern design of the Liebherr wheel loader is user-friendly and easy to maintain down to the smallest detail.

Environmentally conscious and modern

The Liebherr wheel loaders make a reliable contribution to the economic success: With maximum handling capacity the operating costs are lowered and, at the same time, the environment is protected thanks to the fuel-efficient drive concept.

The L 546 for transporting tree trunks





The L 506 in site work



The L 580 XPower® used for recycling



The L 566 XPower® in gravel application



The L 514 used for recycling



The L 526 in gravel application

Crawler tractors, crawler loaders and pipe layers

For over 40 years the crawler tractors and crawler loaders have been a fixed component of the Liebherr construction machinery programme. The concept of the hydrostatic travel drive was pursued from the outset. Some of the advantages of this technology include high efficiency, as well as comfortable and safe operation. The modern crawler tractors and crawler loaders are developed and produced by Liebherr-Werk Telfs GmbH (Austria).

The driver's crawler

With a Liebherr crawler tractor drivers always get a top performance – and also in changing weather conditions and with changing material qualities.

Whether it is for difficult thrust applications or precise levelling: The hydrostatic travel drive automatically delivers the optimal feed speed. Three levels of assist systems guarantee maximum levelling quality and efficiency.

Liebherr Silent Design and the responsive touch interface offer a high degree of workstation comfort and individual adjustability.

Assist systems increase productivity and safety

Liebherr pipe layers are used all over the world in extreme environmental conditions and manoeuvre loads up to 100 tonnes. Hydrostatic drive, precise and powerful working hydraulics, as well as modern assist functions, such as the fully integrated load moment limiter, guarantee maximum performance and safety on every pipeline construction site.

The new crawler tractor PR 736 G8.0 with Liebherr Operator Assistance Systems





The PR 766 G8 crawler tractor in quarry operations



The LR 626 G8.0 crawler loader in railing development



Indispensable assistant in the construction and maintenance of oil and gas pipelines

Telescopic handlers

With their outstanding lifting capacities and excellent manoeuvrability, the Liebherr telescopic handlers from the plant in Telfs (Austria) are suitable both for demanding applications in construction, and for diverse industrial activities.

Power packs in every dimension

The tried-and-tested hydrostatic travel drive with stepless acceleration and the good manoeuvrability guarantee fast work processes, even when space is restricted. The universal and very robust construction machines are designed for optimal performance in diverse applications. High lift capacities (up to 6 tonnes) and lifting heights (up to 10 metres), intuitive operation, as well as high-performance components, enable drivers to complete the work quickly and safely.

Powerful and precise also in maximum load range

Robust and reliable: That's how the telescopic handlers from Liebherr are built. Sophisticated technology and high material and manufacturing quality guarantee a high level of availability. A high degree of utilisation and value preservation are guaranteed over the long term.



The telescopic handler T 60-9s in the sawmill



The T 60-9s telescopic handler as a universal aid on a construction site



Material handling technology

For over 60 years Liebherr has been successfully designing and manufacturing machines for material handling in the plants of Liebherr-Hydraulikbagger GmbH in Kirchdorf an der Iller (Germany) and Liebherr-France SAS in Colmar (France). With the various machine types of the new handler generation, Liebherr is offering efficient machines for handling large volumes for numerous applications such as scrap handling, timber handling and port handling, recycling and waste management.

Customised applications

To meet every intended purpose, Liebherr boasts a comprehensive portfolio of undercarriage variants, equipment combinations, attachments and quick-change systems, as well as a wide selection of equipment options. Every machine can be individually configured depending on the deployment and requirements. The benefit for the customer is an efficient machine tailored to the respective application.

In-house production expertise

All key components such as diesel engines, electronic components, slew rings, swivelling drives and hydraulic cylinders, as well as all attachments, be it multi-tine grabs, clamshells, wood grabs or sorter grabs, are developed and manufactured by Liebherr.



The LH 26 M Electro Industry used for recycling



The LH 60 M Timber Litronic used for timber handling



The LH 40 M Industry Litronic used in scrap handling

The LH 110 M HR Port Litronic used for timber handling



Deep foundation machines

Liebherr-Werk Nenzing GmbH in Austria manufactures a wide range of deep foundation machines: in addition to the combined piling and drilling rigs, the comprehensive product portfolio also includes drilling rigs as well as piling rigs with fixed or swinging leader. A broadly diversified range of applications is covered with this variety.



High productivity in tough construction site applications

The robust design, the high stability, as well as the high pull and push forces, are typical of the Liebherr deep foundation machines. As a result, they convince under the most demanding operating and soil conditions with the ultimate in productivity and reliability. At the same time, the diverse machines are fuel-efficient and environmentally friendly, and can also be easily transported and quickly set up.

Full-service provider in the deep foundation industry

In the field of deep foundation work Liebherr offers its customers not only numerous machines, but also a large number of services and digital solutions, which enhance efficiency on the construction site. These include technical consultation in the planning stage, application consulting on the construction site, recording, evaluation and transfer of machine data using LiDAT, exact positioning of the machines using LiPOS, as well as the documentation and analysis of the processes on the construction site via MyJobsite.

In addition to the deep foundation machines, duty cycle crawler cranes from the HS series are also manufactured in Nenzing. With various attachments these are also used for deep foundation applications.

The piling and drilling rig LRB 16 installing cast-in-place vibration piles



The LRB 18 driving precast concrete piles at Lake Walen (Switzerland)



The battery-powered drilling rig LB 16 unplugged used for drilling work in Paris

The drilling rig LB 30 carrying out foundation work in Mels (Switzerland)



Duty cycle crawler cranes

When the duty cycle crawler cranes were included in the range of products in 1979, Liebherr was the world's first manufacturer of hydraulically driven and electronically controlled duty cycle crawler cranes. Since then the Liebherr duty cycle crawler cranes have been produced and sold by Liebherr-Werk Nenzing GmbH in Austria with great success. The proven universal machines are distinguished by their flexibility, efficiency and excellent cost effectiveness.

Diversity in all areas

These universal machines can also be used in special civil engineering and material handling, in gravel extraction, demolition or recycling. The product types include machines of all performance categories from 40 tonnes to 300 tonnes – it also includes the world's largest duty-cycle crawler crane, the HS 8300, which is also equipped with a hybrid drive.

Liebherr duty cycle crawler cranes convince with their robust steel construction and their high-performance and innovative drive technology. As a result, they work very reliably even in demanding applications. Moreover, the customer benefits from optimised performance and enhanced safety, simple and fast transportation and quick set-up on site.

A number of assistance systems ensure safer and simpler application: One example is the innovative Ground Pressure Indication. It calculates the current ground pressure of the machine in real time and compares it with the specified safety limits of the relevant position. The ground pressure is displayed in the operator's cab and the operator is permanently aware of whether the machine is situated in, or is approaching, a critical area. Dangerous work steps can so be avoided, or adapted to in good time.



HS 8130 with slurry wall cutter and HS 8100 with slurry wall grab operating in London

The HS 8100.1 E with electric drive
dredging in Le Havre (France)



Mining machines and technology

Since Liebherr's move into the mining industry, its equipment has set standards in open-pit mining operations around the world. Through advanced technologies, long-life components, and comprehensive on-site customer service, Liebherr Mining trucks, excavators, and dozers ensure the highest levels of time and cost-efficiency – even under the toughest of conditions. Liebherr is continuously growing its innovative capacity and, along with a dedicated focus on quality, the company ensures maximum customer value in all product areas.

Mining equipment

Liebherr Mining machines come with 50 years' experience in design, manufacturing, and support. Included in the portfolio are mining trucks designed to handle payloads of up to 375 t / 413 tons, nine different excavator models with operating weights from 100 – 800 t / 110 to 880 tons with bucket capacities up to 47.5 m³ / 62.1 yd³, and hydrostatic dozers ranging from 50 – 70 t / 55 – 77 tons. Perfect matches between Liebherr trucks and excavators are suited for the demands of mining environments across the globe. Customers can expect a high level of performance from these machines at the lowest cost per tonne.

Emissions reduction has always been a main focus of Liebherr. The Mining division has achieved its first target to offer low carbon emissions solutions for its complete digging and hauling range. The technologies, including the haul truck Trolley Assist System and electric excavator range, are consistently achieving proven results in the field to lower carbon emissions. Liebherr is committed to the future and strives to offer completely fossil fuel free mining equipment for hauling, digging, and dozing by 2030.

Mining Technology Product portfolio

Liebherr's recently introduced Mining Technology Portfolio demonstrates the company's interoperable and scalable approach to the equipment, technology, and service product offerings. This portfolio consists of digital solutions which provide extensive offerings to plan, operate, automate, perform, and maintain customers' jobsites through different modular options centred on safety, cost, and flexibility.

Our mission. Your success.

Liebherr works hard to maintain a robust and collaborative partnership with every customer: from first contact, to customised machine builds, to ongoing customer service with training, parts, parts remanufacturing, and on-site service. Highly trained Liebherr service personnel ensure correct preventative and scheduled maintenance as well as prompt emergency service through the equipment's lifecycle to guarantee optimal equipment uptime.



Liebherr's 70 t class dozer, the PR 776, offers best-in-class efficiency for customers



Liebherr's Mining Technology Product portfolio further supports customers with equipment performance and maintenance



The T 284 equipped with trolley



The Liebherr R 9600 is the successor of the popular R 996B



Liebherr R 9400 loading a Liebherr T 264 truck

Tower cranes

The invention of the mobile tower crane in 1949 not only represents the birth of this product, but also the entire Liebherr Group. Liebherr Tower Cranes is now a successful global provider of tower cranes with three production sites in Biberach an der Riss (Germany), Pamplona (Spain) and Pune (India).

Large product range

The portfolio covers a wide range of high-quality tower cranes of all systems and size classes. These include fast-erecting cranes, top-slewing cranes, luffing jib cranes and special cranes. The flexible fast-erecting cranes and high-performance top-slewing models prove themselves in residential construction, as well as in industry and large projects all over the world.

Services complement the technology

As a supplement to the products, Liebherr Tower Cranes offers a wide range of services. Tower Crane Solutions advises and plans for special projects; Tower Crane Customer Service guarantees spare parts supply and offers support for crane erection, comprehensive maintenance activities, as well as a broad range of training courses. The Tower Crane Center supports customers and partners all over the world in the rental and used crane business.



Serving culture and education: Top-slewing cranes used in the construction of the M+ museum in Hong Kong (China)



The fast-erecting crane 81 K.1 with increased load capacity at the Hamburg City Hall (Germany)



HC-L tower cranes used in the construction of Europe's tallest building, the Lakhta Tower in St Petersburg (Russia)



Tours Duo: EC-B cranes used for Tours Duo in Paris (France)

Mobile construction cranes

The mobile construction cranes of the MK series combine the mobility of a classic mobile crane with the functional advantages of a tower crane such as working at projecting edges or the high handling capacity. The Liebherr plant in Biberach (Germany) works closely with other Liebherr plants on the development of these cranes.

Flying high

In 2000 Liebherr presented the first mobile crane with the MK 80, whose undercarriage and uppercarriage formed a single unit. Apart from three- and four-axle vehicles, the Liebherr portfolio also includes the largest five-axle mobile construction crane on the market. This reaches hook heights of up to 94.4 m.

Fantastic advantages

The extremely agile taxi cranes of the MK series are designed for one-man operation. The crane driver can move and mount the MK himself, and operate the crane by means of remote control or in an elevator cab with adjustable height. Mobile construction cranes reveal their true strengths in particular where space is limited. The vertical tower enables work directly at the building, where the entire jib length can always be used. With the variable steering concept and the active rear-axle steering mobile construction cranes fit in almost every gap.



The MK taxi cranes enable several applications in one day



The MK 140 in luffing mode during the exchange of antenna technology of a telecommunications tower



The MK 140 at the historic moated castle Kriegshoven in Swisttal (Germany)



Truck mixers and mixing plants

Liebherr can look back on over 60 years of experience in the development and manufacture of concrete mixing plants. The current portfolio of stationary mixing plants ranges from small compact systems through to large plants for mass concrete for the construction of dams. These stationary mixing plants are produced at locations in Germany (Bad Schussenried), China (Xuzhou), Thailand (Rayong) and Brazil (Guaratinguetá).

Modular concept and mobility of plants

The series of Betomix plants is particularly successful. These plants have a modular design and can be realised in countless variants and performance capacities depending on customer requirements. The Mobilmix mobile mixing plants have also established themselves very well on the market. They can be constructed in two days and easily transported from one construction site to the next. Liebherr only uses highly efficient mixer systems it develops itself. The high weighing accuracy of the Liebherr mixing plants ensures considerable cement savings and high efficiency for the operator.

Ready-mix concrete

Truck mixers from Liebherr are used worldwide, over 100,000 units have already been manufactured and sold. The programme starts with the agile small types from 5 m³ nominal volume for use in halls of concrete and prefab factories. In the area of ready-mix concrete, mainly types with 8, 9 or 10 m³ nominal volume are used. Depending on the country of operation, truck mixers up to 16 m³ are possible. Semitrailers with a high load capacity round off the programme. A useful optional accessory is the LTB conveyor. Concrete, sand or gravel can be distributed or poured directly at the construction site.

Betomix 2.5 concrete mixing plant





The truck mixer HTM 1004 ZA/38 is approved for a total weight of 38 t



The truck mixer HTM 1004 with double telescopic conveyor LTB 12+4+1



The truck mixer HTM 905 is the best-selling model



Electric truck mixer of the new generation 05

Concrete pumps

Liebherr possesses the entire variety of high-quality concrete pumps „Made in Germany“. The innovative design, as well as a global service network, ensure high availability and maximum customer benefits.

Truck-mounted concrete pump with extra stability

Liebherr manufactures truck-mounted concrete pumps with a vertical reach from 24 m to 50 m. The smaller types, also called hall champions, impress primarily with their compact design and low unfolding heights. They can therefore also be used inside buildings. The larger truck-mounted concrete pumps are supplied with the XXT support. This outrigger is particularly flexible in use, very stable and absorbs forces directly from the boom without taking unnecessary turns. The powerful pump units are characterised by smooth running and a long service life

Enormous performance of stationary pumps

The stationary pumps from Liebherr are suitable for all types of pumping on construction sites over longer periods. There are different performance classes with pumping capacities of up to 135 m³ per hour. Depending on the type of application, trailer or crawler concrete pumps are used. Comprehensive concrete spreader systems complement the programme.



Truck mounted concrete pump 36 XXT



Crawler concrete pump 110 D-K, Trailer-mounted concrete pump 110 D



Mobile cranes

Every second all-terrain mobile crane supplied worldwide originates from the modern crane production site of Liebherr-Werk Ehingen GmbH (Germany). Research and development, production, as well as global sales and service, are combined at the site. The global market leader thus has comprehensive expert knowledge on the entire life cycle of a mobile crane.

Cutting-edge technology for outstanding performances

Liebherr offers the right crane for every lifting task and customer requirement. The wide spectrum of mature crane concepts ranges from the two-axle 30-tonne to the heavy duty crane with a load capacity of 1,200 tonnes. High-performance, efficiency and safety characterise the mobile cranes from Liebherr. The recognised high quality of the mobile cranes and the high technological standard is the result of the efforts of the qualified employees.

Service from the global market leader

Liebherr mobile cranes are used worldwide. Thanks to direct sales and a close-knit global network of separate sales and service locations, the Liebherr plant in Ehingen (Germany) is in constant contact with its customers.



Assembly of telescopic booms



Liebherr mobile cranes are distinguished by their excellent all-terrain performance



Final assembly of the mobile cranes in the Liebherr plant in Ehingen (Germany)

Bridge assembly with a LTM 11200-9.1 in Canada



Crawler cranes

Whether in the wind industry, for heavy lift applications or for lifts with a particularly long jib length: Liebherr crawler cranes are used worldwide in applications where heavy loads have to be moved safely and efficiently. They are developed and built in Ehingen (Germany) and in Nenzing (Austria).

Genuine powerhouses

The Liebherr crawler cranes convince with excellent load capacities up to 3,000 tonnes, impressive lifting heights and outreaches. The dimensions and weights of the components which are suitable for transportation make the cranes particularly mobile. The models also impress with accurate control technologies, innovative materials, quality and reliability.

Liebherr crawler cranes are currently helping to drive forward climate reversal with the expansion of renewable energies on land and water.

Wide product range

The Liebherr factory in Ehingen manufactures crawler cranes for applications in wind energy and infrastructure, as well as for the heavy-lift sector. Equipped with extremely variable boom systems, they deliver load capacities up to 3,000 tonnes for diverse lifting duties.

Liebherr-Werk Nenzing GmbH manufactures crawler cranes with lower load capacities, especially for the multi-purpose area. Their robust steel structure reduces wear and ensures a longer lifetime. As part of the so-called unplugged series, these crawler cranes are also available in a battery-powered, electric version. All Liebherr crawler cranes are optimised for global use and efficient transport.

Digital solutions and services for the construction site of the future complete the product portfolio. For instance, Liebherr developed the modern lift planning software Crane Planner 2.0 for mobile and crawler cranes.

This helps to take all eventualities on the construction site into account and to find solutions in advance so that every lift can be optimally mastered.



A LR 1700-1.0 used for the erection of a wind turbine in Germany



The battery-powered crawler crane LR 1250.1 unplugged used for lifting work in Oslo (Norway)



A LR 1750/2 used for a bridge construction in Japan



The LR 13000, the largest Liebherr crawler crane, at a petrochemical application in Italy

Port equipment

For cargo and container handling requirements in seaports and inland ports, the Maritime Cranes product segment manufactures various container handling cranes, mobile harbour cranes and stackers in plants in Killarney (Ireland), Nenzing (Austria), Rostock (Germany), as well as Sunderland (Great Britain).

Mobile harbour cranes

The series of mobile harbour cranes includes seven sizes with load capacities from 42 t to 308 t. With deliveries to over 100 countries worldwide, Liebherr mobile harbour cranes impress in all applications. Their flexible fields of application include highly efficient container handling, bulk cargo handling, handling of scrap or general cargo, as well as heavy lifting – with a simple exchange of the lifting attachment. Outstanding 360° mobility and the stepless hydrostatic power transmission make the Liebherr mobile harbour crane to one of the most powerful material handling machines in the world.

In addition to the conventional portfolio, Liebherr also offers the LPS 420E, a 100% electrically driven gantry crane.

Container cranes

Ship to shore container cranes are available in sizes from panamax through to the latest generation of megamax cranes which are capable of handling the world's largest container vessels. For landside container stacking, electric (busbar, CRD), hybrid or diesel rubber tyre gantry cranes work stacks of up to ten containers wide and six high, whilst rail mounted gantry cranes offer one over eight stacking and spans of up to 70 m and beyond. Full and semi-automation options along with remote control via the Liebherr Remote Operator Station (ROS) is available for all container cranes.

Fixed port solutions

The fixed cargo cranes FCC and the fixed slewing cranes LFS are both flexible and space-saving solutions for any material handling. They are installed on quaysides, landing bridges, dockyards and other harbour areas. These cost-effective solutions are designed for multi-purpose use, including container as well as bulk handling.



A fixed cargo crane FCC 280 handling containers in San Antonio (Paraguay)



Liebherr electric rubber tyre gantry cranes at Montreal Gateway Terminals (Canada)



Two mobile harbour cranes LHM 800 in tandem lift operation at the Port of Saint-Petersburg (Russia)



Liebherr ship to shore container cranes at Eurogate Container Terminal Hamburg (Germany)

Ship, floating and offshore cranes

With the product series of ship cranes and floating cranes, Liebherr offers practical handling equipment for all types of ships, barges and transshippers. The diverse range includes wire luffing and cylinder luffing ship cranes for container and general cargo handling, as well as heavy lift cranes. High performance four-rope grab cranes designed for continuous operation are particularly suitable for loading and unloading bulk cargo – both in sheltered waters and on the open sea. Space-saving crane installations for use on wharfs, at ports and at shipyards are also a part of the ship cranes range. These cranes are either mounted on permanently installed supports (fixed cargo cranes) or on mobile gantries (travelling cargo cranes).

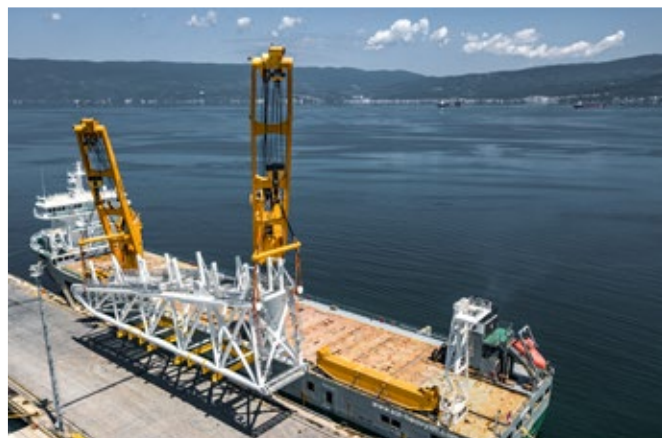
Versatile deployment possibilities

Offshore cranes from Liebherr are used not only on oil and gas platforms, but also for constructing offshore wind turbines, dismantling platforms, handling remote-controlled submarine vehicles or for laying pipelines and telecommunications cables on the seabed.

The Liebherr range of offshore products includes machines with rope luffing, cranes with hydraulic cylinders and with large diameter bearings, as well as mast cranes. For constructing offshore wind turbines and building and/or dismantling platforms, Liebherr offers a wide range of offshore heavy duty cranes with lift capacities up to 5,000 tonnes and a maximum boom length of over 160 m.

Safe and field-tested

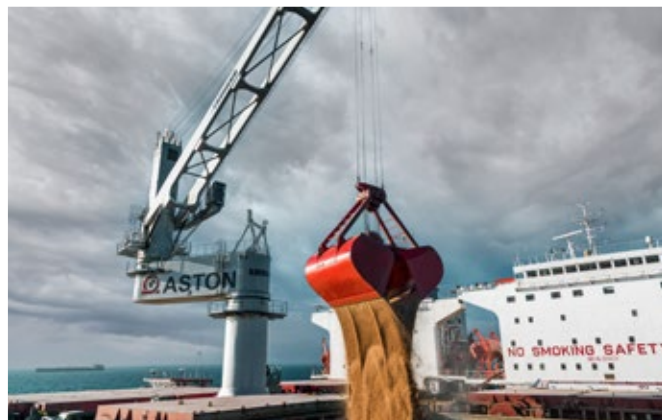
The design of Liebherr offshore cranes includes a diesel or an electric drive depending on requirements. In addition, all safety-relevant components and electrical components are designed to be explosion-proof. The cranes can be operated at ambient temperatures as low as -50 °C, and the special deep sea model can be used for lifting work up to 3,600 m below sea level.



The Liebherr CBB 4700-450 as part of the versatile ship crane portfolio handling a stinger



With a maximum lifting capacity of 1,250 tonnes, the board offshore crane BOS 35000 is designed to handle heavy and large components



The Liebherr CBG 300 with eccentric platform on a transshipment vessel handling grain on the open sea



This crane around the leg CAL 45000, in operation on-board the "Vole au Vent", can lift up to 1,200 tonnes

Aerospace

Liebherr-Aerospace is a leading supplier of systems for the aviation industry and has more than six decades of experience in this field. The range of aviation equipment produced by Liebherr for the civil and military sectors includes flight control and actuation systems, landing gears and air management systems, as well as gearboxes and electronics.

Diverse use

These systems are deployed in wide-bodied aircraft, single aisle and regional aircraft, business jets, combat aircraft, military transporters, military training aircraft, civil helicopters and combat helicopters. They make a substantial contribution to the performance of the aircraft and to the safety and comfort of the passengers and crews.

Comprehensive service

Liebherr-Aerospace has four aviation equipment production plants at Lindenberg (Germany), Toulouse (France), Guaratinguetá (Brazil) and Nizhny Novgorod (Russia). These production sites offer a worldwide OEM customer service with additional support centres in Saline (Michigan / USA), Seattle (Washington / USA), Montreal (Canada), Sao José dos Campos (Brazil), Hamburg (Germany), Moscow (Russia), Dubai (UAE), Bangalore (India), Singapore and Shanghai (People's Republic of China).

The customer service activities include repair and maintenance work, technical support, documentation and spare parts, as well as an AOG service (Aircraft on Ground). As a reliable partner of aircraft manufacturers and operators, Liebherr-Aerospace covers the entire life cycle of an aircraft.

The Airbus A350 flies with Liebherr technology





Field service at a landing gear



Working on air-conditioning system components



Certification of an actuator



© Airbus Helicopters

H135 with main and tail rotor servo controls from Liebherr on board

Transportation systems

Liebherr-Transportation Systems is a well-known manufacturer of systems and components for rail applications. The company with its head office in Korneuburg, Austria stands for competitive technical solutions in the area of conventional and air cycle air conditioning systems, hydraulic actuation systems and electronic components for all types of rail vehicles, and draws on many years of experience in the development and manufacture of these technologies.

System solutions for comfort and security

The customised system solutions are successfully used in high-speed trains, long-distance trains, trams, other rail cars, as well as buses. They improve the ride comfort and increase safety.

With continuous investment in research and development, Liebherr-Transportation Systems designs solutions and components for the future of the railroad and automotive industry.

Global presence

In addition to its own manufacturing, sales and service sites in Korneuburg (Austria), Marica (Bulgaria), Pinghu (China), Mannheim (Germany), Paris (France), as well as Sunderland (UK) and London Gatwick (UK), Liebherr's transportation systems division has access to the Group's development and service facilities around the world. As part of this global organisation, Liebherr-Transportation Systems is present for customers wherever they may be.



Maintenance of electro-hydraulic actuator



© Bombardier

Liebherr equips the Flexity Berlin tram with air conditioning systems



© Bombardier

Liebherr cooling systems for lithium-ion batteries are used, for example, in electric buses in Berlin and Braunschweig

The modern, environmentally-friendly air cycle air conditioning system from Liebherr ensures comfort in the ICE 3



Gear cutting machines, Gear cutting tools and metrology

Liebherr-Verzahntechnik GmbH in Kempten (Germany) develops and manufactures high-quality gear cutting machines and measuring devices in Kempten (Germany), gear cutting tools in Ettlingen (Germany) and in Collegno (Italy). The innovative products are distinguished by their high precision, availability and user friendliness. Furthermore, customers around the world value the outstanding energy efficiency and cost effectiveness of the machines and systems.

Gear cutting machines

Liebherr offers a wide selection of high-quality gear cutting machines. The division is continuously further developing the machines and particular emphasis is placed on high energy efficiency. From the automotive industry to wind turbine manufacturers, customers around the world trust Liebherr machines.

The range of gear cutting machines includes gear hobbing machines, gear shaping machines, as well as generating and profile grinding machines, for soft and hard machining of cylindrical gearing with workpiece diameters up to 16,000 mm. With the new user interface, the gear cutting machines from Liebherr are particularly intuitive and comfortable in operation.

Gear cutting tools

Liebherr is one of the world's leading manufacturers of gear cutting tools and stock tools. Liebherr develops individual solutions for customers. Included in the scope of services are special designs for all gears capable of being made through shaping. Moreover, Liebherr ensures high-quality machining of gear cutting tools from all manufacturers. Innovative developments and the long service life of the tools distinguish the division as a reliable partner.

Metrology

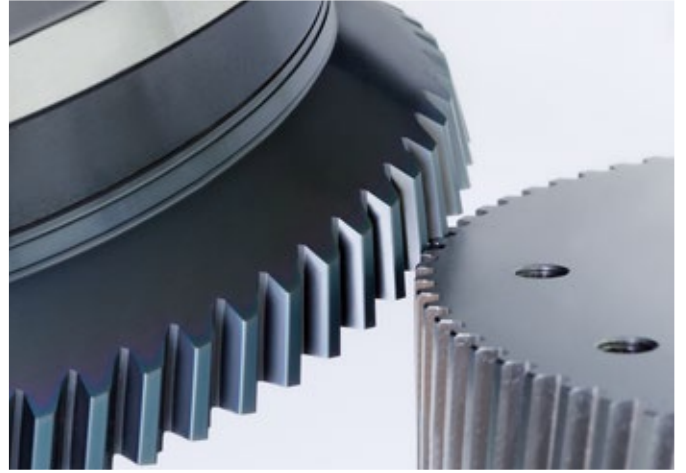
The offer from Liebherr includes a wide range of measuring devices. The combination of high-precision measuring mechanics and the specially developed gear measuring software guarantees precise measuring results.

Liebherr gear cutting machines for soft and hard machining of cylindrical gearing with workpiece diameters between 60 mm and 16,000 mm





Fine machining through grinding and polishing



New tool for gear skiving machines



Automation systems

In the automation systems area, Liebherr has established itself worldwide as a specialist for automation solutions. Liebherr-Verzahntechnik GmbH produces in Kempten (Germany) systems for the automation of machine tools, as well as innovative solutions in manufacturing and factory automation.

From robots to handling systems

The broad range of automation systems ranges from linear robots and robot applications to conveying and storage systems through to solutions for pallet handling systems. This makes it possible to realise projects in all areas of production and assembly. Liebherr guarantees the customer above-average availability of the systems.

Lower costs and greater flexibility

Automation solutions from Liebherr reduce production costs and enable a flexible response to changes in demand from the market at short notice. They are essentially designed for economy, ease of use, quality and reliability in combination with a high degree of flexibility.



The plastic chain conveyor (KKB) as conveying system for crankshafts for example



Bin Picking: Economic unloading of bulk materials



Portal robot for workpieces with weight between 0,5 kg to 1,500 kg



Linear pallet handling system (PHS) for transport loads from 500 kg to 13,000 kg

Combustion engines and injection systems

Since 1984, Liebherr has been developing and manufacturing high-performance and robust combustion engines for diverse applications. Combustion engines from Bulle in Switzerland and Colmar in France are used in building construction, deep foundation, mining, in special vehicles, stationary applications, as well as agriculture and forestry machinery.

Powerful combustion engines based on a modular design

Liebherr's combustion engine portfolio covers a broad power range from 120 kW to 4.5 MW. The 4- to 20-cylinder engines offer numerous customer benefits: efficient performance, robust design and simple maintenance. Thanks to the modular design, the various engines can be easily adapted to customer requirements and applications. Liebherr also offers exhaust gas aftertreatment systems in line with the legal requirements in the various regulated markets. For Tier 4 final Liebherr uses the innovative system SCRonly, for Stage V the SCRFilter system – both in-house developments.

Injection systems „Made by Liebherr“

Since 2013, Liebherr has been producing its own injection systems in Germany and Switzerland. The reliable common rail systems and engine controls by Liebherr guarantee high efficiency of the engine with low fuel consumption. As a result, they enable compliance with the increasingly stricter emissions standards for diesel engines. In parallel, Liebherr is also developing injection concepts for hydrogen and synthetic fuels, contributing to a significant reduction in the carbon emissions of future combustion engines.



In-line six-cylinder engine D966 from Liebherr



Assembly of common rail systems in the cleanroom



Assembly line for v-engines

Hydraulic and mechanical drive technology

A wide range of components of the hydraulic and mechanical drive technology is developed and manufactured at a total of six production sites in Europe, Asia, as well as in North and South America. The broad range of services also includes the remanufacturing of used components, among other things.

Longlife hydraulic pumps and motors

Since 1978, Liebherr has been offering high-quality axial piston pumps and motors for open and closed circuits. The longlife units for the medium- and high-pressure range cover numerous applications in mobile and stationary hydraulics. Splitter boxes with the possibility of a direct assembly of hydraulic units complete the product range.

Diverse slewing bearings and compact slewing drives

Liebherr manufactures ball bearing and roller bearing slewing rings in various dimensions and versions. Decades of experience, comprehensive engineering know-how and expertise, together with state-of-the-art manufacturing plants, ensure top-quality products. Roller bearings with diameters sometimes ranging over 10 metres are used not only in construction machines and cranes, but also in wind turbines, maritime applications and tunnel boring machines. With their high power density and compact design, Liebherr's slew drives are particularly suitable for the transfer of high forces and torques in a small package space.

Equipped for tough conditions:

Gearboxes and rope winches

Every year Liebherr manufactures tens of thousands of gearboxes and rope winches with the utmost reliability and quality. Liebherr offers custom-fit gearbox variants from the slewing drive or travel drive in large-scale production to tailored gear ring rope winches or planetary plug-in gearboxes.

Hydraulic cylinders and co.

With piston diameters of up to 500 mm and stroke lengths of up to 8 m, the cylinder portfolio impresses with a large variety. Innovative solutions for lightweight and crane applications, earthmoving and mining machines, maritime applications, as well as stationary plants are planned in close cooperation with the customer. Resilient dampers, efficient hydraulic power units, sensor technology and piston accumulators round off the offering.

Components out of carbon fibre reinforced plastic (CFK)

Carbon fibre reinforced plastics offer maximum design flexibility in component development. The wide variety of starting materials and the orientation of the reinforcing fibres make for versatility in the modelling of the composites. Thereby it also offers individual solutions for a wide range of applications. CRP can be deployed, whenever the weight and performance require optimisation to increase the competitiveness of a component and in that of the entire system. From development to manufacturing, Liebherr unites the expertise in carbon fibre technology in-house.



Assembly of slewing drives DAT 1000



Robotised coating line for hydraulic cylinder series-production ranges



Inductive hardening of slewing bearings



CRP production using the in-house robotised winding machine



Long lifetime, low installation space and low maintenance – the swivelling drives by Liebherr.

Electric drive technology and electronics

Liebherr offers a wide range of reliable products from the areas of control and drive technology, as well as solutions and services in the field of electronics.

Human-machine interfaces, systems and gateways

Digital smart cameras and display controllers by Liebherr ensure high image quality and comfort in the driver's cab. The 360° LiXplore® top-view system makes it easy to manoeuvre the machine. Liebherr also has IoT gateways in its product portfolio, which provide much more application scope than traditional telematics products thanks to high-performance hardware.

Control electronics and services

Customised mobile electronics impress in mobile machinery or special vehicles. In aerospace and rail technology, individually designed assemblies are used in ventilation and cooling systems, among others.

In its in-house electronics competence centre in Lindau (Germany), Liebherr also offers a comprehensive range of services – from development and production to qualification.

Power electronics with high availability

Liebherr power electronics for industrial applications were developed for use in harsh environmental conditions. The frequency converter systems, power modules, energy storage devices and DC/DC converters impress primarily by their high power density, availability and efficiency. Power electronics for aviation are used in flight control systems, refuelling systems and ventilation and cooling systems.

Control cabinets for every customer requirement

As a development partner, Liebherr offers customised control cabinets. In Biberach, (Germany), Liebherr manufactures manufacture one-offs, as well as small-scale and medium-scale quantities. These are designed according to the respective requirements such as, for example, a higher degree of protection or special installation dimensions. Liebherr also designs customised automation solutions and electric drive systems for stationary and mobile applications.

Efficient electric machines

For over 50 years, Liebherr has been developing and manufacturing efficient electric motors and generators for diverse customer needs at the site in Biberach, (Germany). State-of-the-art design and simulation processes are the foundation for the construction of compact asynchronous and permanent magnet motors, as well as synchronous and asynchronous generators with high power density.



Installation of control cabinets for container cranes



Winding of electric machines for mining trucks and port cranes



Liebherr operates a modern, well-equipped test centre at its competence centre for electronics in Lindau (Germany).

Domestic appliances – Household

The Liebherr Domestic Appliances division specialises in the manufacture of refrigerator and freezer units and is one of the leading European premium providers with annual production of almost 2.3 million appliances. This product division was set up in 1954 at the Ochsenhausen site.

Market-fresh also at home

Healthy food and a sustainable lifestyle are current social mega trends. Anyone who maintains a balanced diet and buys market-fresh fruit and vegetables also wants to keep these products fresh at home for as long as possible. For this purpose Liebherr develops clever features and cooling solutions for its refrigerators for every requirement. In general, microorganisms affect the shelf life of food. Cooling slows down the activity of these organisms. In addition to long-lasting, fresh food, customers also want greater convenience from their refrigerators for their daily routine. With technologies such as BioFresh and DuoCooling, the wasteful dumping of food can be reduced. Our customers can even save money with optimal food storage.

The right solution for every customer request

The appliances are both a design highlight and space miracle for kitchens and living rooms. Customers expect maximum flexibility in the planning and design of the kitchen or when replacing a refrigerator unit. Liebherr Domestic Appliances offers an appropriate solution for every situation in life with the wide range of refrigerator and freezer units. The product development is aimed both at the needs of the customers and social and societal developments.

Design and energy efficiency go hand in hand

The entire range of Liebherr domestic appliances is characterised by a clever design that is designed for elegance and comfort. Intelligent functions ensure not only uncomplicated use, but at the same time are designed for efficient energy use and optimised refrigeration capacity. The equipment and design are processed with high-quality materials, whereby Liebherr ensures a long life of its appliances. The fridge and freezer units offer a balanced, perfectly matched overall package of operating comfort, high-quality design and quality, as well as energy efficiency with effective refrigeration capacity.

Modern manufacturing network

They are manufactured at the sites in Ochsenhausen (Germany), Lienz (Austria), Marica (Bulgaria), Kluang (Malaysia) and Aurangabad (India). The range includes integrated and freestanding refrigerators as well as combinations and freezers. Wine cabinets and storage refrigerators and customised solutions are also part of the unique portfolio.



With the BioFresh technology, food which is rich in vitamins and minerals is stored at the correct temperature and the ideal humidity



The Monolith range is the flagship for design and premium quality. The interior of the appliances is particularly spacious and impresses with exclusive equipment.

With the side-by-side concept fridge and freezer units as well as wine cabinets can be positioned entirely according to individual needs. Different Liebherr models can be easily combined to create a multifunctional FreshnessCentre



Domestic appliances – Commercial

Liebherr-Hausgeräte also offers a high-quality and diverse product range for commercial applications. The appliances must work reliably under extreme conditions in a professional environment. Thanks to high-quality components, they meet the professional standards in gastronomy, retail, business and laboratories. The refrigerators and freezers for commercial use and laboratories are produced at the two sites Lienz (Austria) and Kluang (Malaysia).

Modern appliances for professionals

Particularly high requirements are placed on commercial appliances. They offer all the advantages that really matter in a professional setting: high-quality components and maximum useful volume, efficient cooling power and exemplary easy-to-clean design. The highly efficient refrigeration components make possible constant cooling of the goods – also with frequent opening and closing of the doors. Powerful and environmentally friendly refrigerants, as well as accurate electronics, ensure that the quality and freshness of the stored food is kept fresh for as long as possible. The range is enhanced with special design highlights: the Black-Line appliances, which are in all black. The large glass door and innovative lighting options put the goods in the limelight.

EcoVadis certificate for sustainability

Liebherr-Hausgeräte Lienz GmbH, a specialist for commercial appliances, receives the EcoVadis certificate for special sustainability efforts. EcoVadis, the world's leading provider of sustainability ratings, awards Liebherr-Hausgeräte Lienz GmbH (Austria) with the silver medal, thus acknowledging the continued efforts of the company in the areas of environment, labour and human rights, ethics, as well as sustainable procurement.

Best goods presentation with optimal energy efficiency

The new Liebherr supermarket chest appliances are not only innovative and designed for different areas of use, but also offer the food retail trade the potential for commercial success. The buying habits of customers in the food retail trade are changing, as well as their requirements for quality and availability of products. Nowadays the entire buying experience and the satisfaction of the customer needs are decisive. Two Liebherr appliances from the commercial area received the Red Dot Award 2019 in the category „Product Design“. With the award-winning products Liebherr managed to combine an attractive design, particular user friendliness and functionality down to the finest detail.



Thanks to innovative lighting options, the goods are put in the limelight, which at the same time increases the opportunity for a quick purchase decision



The expert jury awarded the design quality seal to the Liebherr supermarket chest appliances and the table-top freezer (FreezerTop) SFT 1223



High-quality medical preparations and sensitive medication are stored safely at all times in Liebherr medicine refrigerators. Optical and acoustic alarm systems emit warnings in the event of temperature deviations. Image: MKv 3913

Hotels of the Liebherr Group

Located in Austria, Ireland and Germany, surrounded by wonderful nature and furnished with great attention to detail, the hotels of the Liebherr Group offer guests a place to relax and unwind. The generously dimensioned rooms and perfect service leave nothing to be desired.

Six hotels – each with its own unique charm

Set in the middle of the Tyrolean mountains the Interlpen Hotel Tyrol is not only a standalone location, but also boasts large rooms, an exclusive spa and a multi-award-winning kitchen.

The Löwen Hotel Montafon impresses with Alpine hospitality, a pleasant atmosphere, wellness offers in the extensive spa and culinary delights in the hotel's own restaurants.

In the southwest of Ireland guests can relax in The Europe Hotel & Resort, Ard na Sidhe Country House or The Dunloe Hotel & Garden, explore the picturesque area, as well as enjoy lush green fields and enchanting lakes. The luxurious

Europe Hotel also has a first-class spa boasting a panoramic view of the fascinating nature. Lush gardens and woodlands are part of the Dunloe Hotel. Guests can fish in the hotel's own river and have the fish freshly prepared for dinner. Ard na Sidhe is an almost mystical location radiating peace and tranquillity in an extraordinary countryside which invites guests to dream in this exquisite lodging.

Hotel Falken is located in the middle of the old town of Memmingen and has comfortable and modern rooms. It is an optimal base to discover the attractions of the town and the wonderful Allgäu region.



Interlpen-Hotel Tyrol, near Seefeld (Austria)



Löwen Hotel Montafon, Schruns (Austria)



The Europe Hotel & Resort, Killarney (Ireland)



Ard na Sidhe Country House, Killorglin (Ireland)



Hotel Falken, Memmingen (Germany)



The Dunloe Hotel & Gardens, Killarney (Ireland)

Product segments of the Liebherr Group

With a broadly diversified product range, which includes a total of 13 product segments, Liebherr plays a significant role in advancing technology in numerous industries. The creative exchange between the segments encourages the development of innovations and visionary technologies, fascinating products and services, which make a real difference.



Earthmoving machines

At seven locations in Europe, Asia and South America Liebherr manufactures a wide range of powerful and high-quality earthmoving machines. In addition, the product segment offers a comprehensive portfolio of tool attachments/implements to extend the application possibilities.



Mining

This product segment supplies the international mining industry with highly specialised large machines for quarrying raw materials in surface mining. The mining excavators and dump trucks from Liebherr are manufactured at two locations in France and the USA and are designed for harsh operating conditions.



Material handling technology

Liebherr develops and manufactures a comprehensive portfolio of powerful, efficient and reliable machines for material handling and all types of cargo in Europe, Asia and South America. The global service network guarantees quick and professional local support.



Mobile and crawler cranes

Powerful Liebherr mobile and crawler cranes with telescopic or lattice jibs are developed and manufactured in Germany and Austria. The product segment offers innovative digital solutions as well as assist systems and has a global sales and service network.



Deep foundation machines

To cover all current methods in special civil engineering Liebherr offers a diversified product range of deep foundation machines with a variety of digital solutions and future-oriented technologies. The very efficient products in this segment are manufactured in Austria.



Tower cranes

In Europe, South America and Asia Liebherr develops and manufactures a broad product portfolio of tower cranes, as well as mobile construction cranes, which meet diverse requirements. Apart from crane systems for the most demanding applications, the product segment provides reliable and sound project advice.



Concrete technology

In the Concrete Technology product segment Liebherr maintains production sites in Europe, Asia and South America, as well as its own test centre with concrete laboratory. The comprehensive product range includes truck mixers, concrete mixing plants and concrete pumps.



Maritime cranes

A versatile range of products for cargo handling in ports and at sea, as well as numerous digital solutions, characterise the Liebherr Maritime Cranes segment. The efficient products are manufactured on the German Baltic Sea coast, the Atlantic coast of Ireland and the North Sea coast of Great Britain.



Aerospace and transportation systems

In the Aerospace and Transportation Systems product segment Liebherr offers a comprehensive portfolio of innovative system solutions and components for aerospace as well as rail transport. The segment has customer-oriented production sites in two product areas, which are complemented by a global sales and service network.



Gear technology and automation systems

Liebherr is one of the leading manufacturers of high-quality gear cutting machines, gear cutting tools, gear measuring machines and automation systems with future-oriented technologies. The products are manufactured in Germany, Italy, India, as well as the USA, and are complemented by a global sales and service organisation.



Refrigeration and freezing

As a specialist for refrigeration and freezing, Liebherr offers the most extensive range of products of efficient refrigerating and freezer units for private and professional use. Longevity, innovative cooling technologies and a modern design are characteristic of the products which are manufactured at five locations in Europe and Asia.



Components

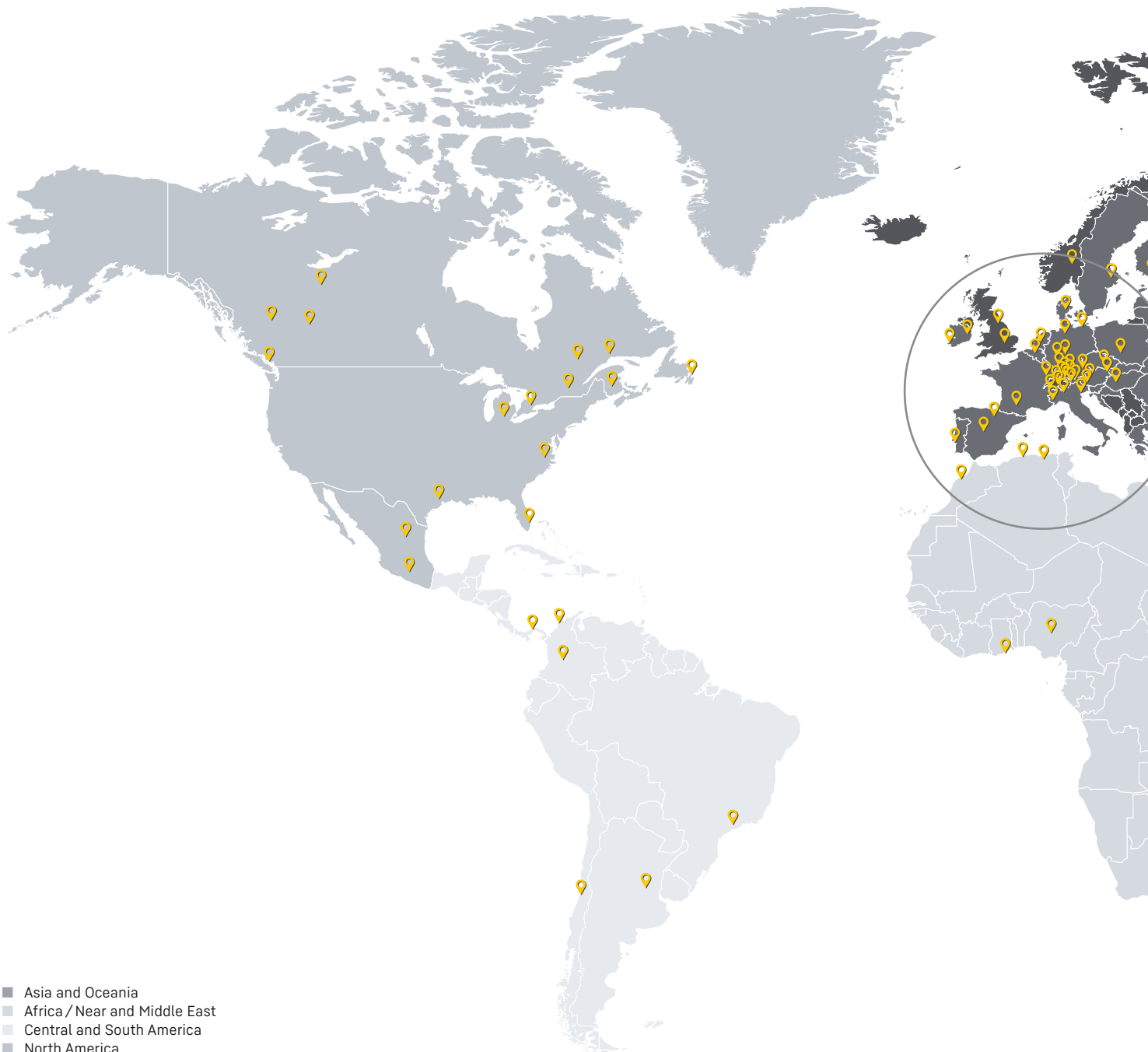
The development, design, production as well as reconditioning of powerful components in the area of mechanical, hydraulic and electric drive and control technology characterise the Liebherr product segment, which includes ten production companies on four continents as well as a global service and sales network.

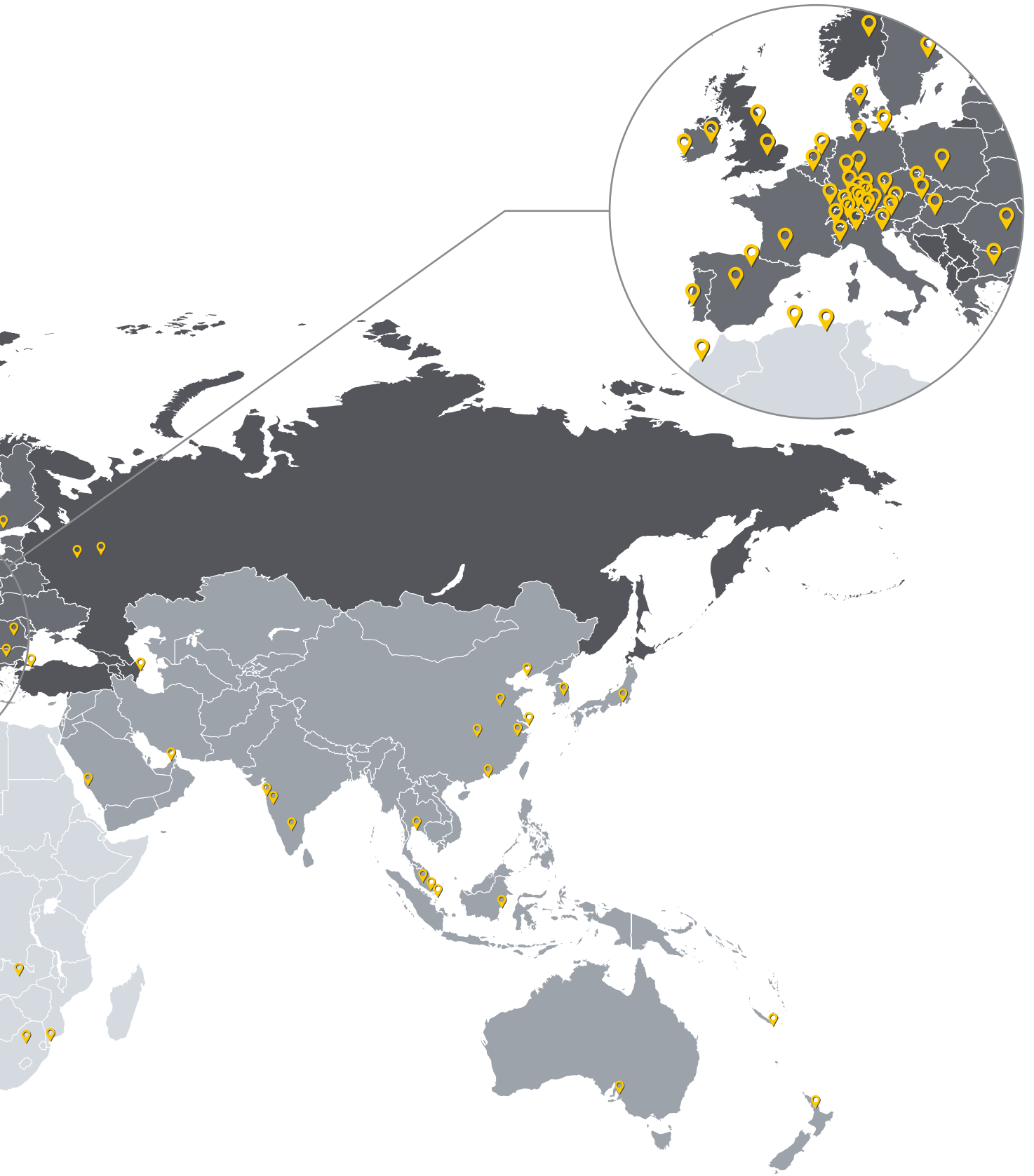


Hotels

The Liebherr Group operates a total of six premium hotels in Ireland, Austria and Germany.

Locations of Liebherr companies





Liebherr Worldwide can also be found online at www.liebherr.com

Summary of Group companies

Europe

Azerbaijan

Liebherr-Azeri LLC
Baku

Bulgaria

Liebherr-Concrete Technology Marica EOOD
Radinovo
Liebherr-Hausgeräte Marica EOOD
Radinovo
Liebherr-Transportation Systems Marica EOOD
Radinovo

Denmark

Liebherr-Danmark ApS
Hedensted

Germany

Hans Liebherr-Hilfe e. V.
Biberach an der Riss
Liebherr-Aerospace Lindenberg GmbH
Lindenberg
Liebherr-Aviation GmbH
Biberach an der Riss
Liebherr-Baumaschinen Vertriebs- und Service GmbH
Dettingen an der Iller
Liebherr-CMCtec GmbH
Biberach an der Riss
Liebherr-Components GmbH
Biberach an der Riss
Liebherr-Components Biberach GmbH
Biberach an der Riss
Liebherr-Components Deggendorf GmbH
Deggendorf
Liebherr-Components Kirchdorf GmbH
Kirchdorf an der Iller
Liebherr-Digital Development Center GmbH
Ulm

Liebherr-Elektronik GmbH

Lindau
Liebherr-EMtec GmbH
Kirchdorf an der Iller
Liebherr-Ettlingen GmbH
Ettlingen
Liebherr-Hausgeräte GmbH
Ochsenhausen
Liebherr-Hausgeräte Ochsenhausen GmbH
Ochsenhausen
Liebherr-Hausgeräte Vertriebs- und Service GmbH
Ulm
Liebherr-Hydraulikbagger GmbH
Kirchdorf an der Iller
Liebherr-International Deutschland GmbH
Biberach an der Riss
Liebherr-IT Services GmbH
Kirchdorf an der Iller
Liebherr-Logistics GmbH
Kirchdorf an der Iller
Liebherr-MCCtec Rostock GmbH
Rostock
Liebherr-MCCtec Vertriebs- und Service GmbH
Hamburg
Liebherr-Mietpartner GmbH
Ludwigshafen am Rhein
Liebherr-Mischtechnik GmbH
Bad Schussenried
Liebherr-Purchasing Services GmbH
Biberach an der Riss
Liebherr-Transportation Systems Mannheim GmbH
Mannheim
Liebherr-Verzahntechnik GmbH
Kempten
Liebherr-Werk Biberach GmbH
Biberach an der Riss

Liebherr-Werk Ehingen GmbH

Ehingen (Donau)

Liebherr-Wohnungsbau GmbH

Kirchdorf an der Iller

Finland

Liebherr-Finland Oy Ab

Helsinki

France

Liebherr-Aerospace Toulouse SAS

Toulouse

Liebherr-Aerospace & Transportation SAS

Toulouse

Liebherr-Components Colmar SAS

Colmar

Liebherr Distribution et Services France SAS

Niederhergheim

Liebherr-France SAS

Colmar

Liebherr-Grues à Tour SAS

Colmar

Liebherr-Grues Mobiles SAS

Niederhergheim

Liebherr-Location France SAS

Niederhergheim

Liebherr-Malaxage & Techniques SAS

Niederhergheim

Liebherr-Mining Equipment Colmar SAS

Colmar

Liebherr-Mining Equipment SAS

Colmar

Liebherr-Nenzing Equipements SAS

Niederhergheim

Société de l'Aéroport de Colmar SAS

Colmar

Ireland

Killarney Hotels Ltd.

Killarney

Liebherr-Construction Equipment Ireland Limited

Rathcoole

Liebherr Container Cranes Ltd.

Killarney

Italy

Liebherr-EMtec Italia S.p.A.

Lallio

Liebherr-Italia S.p.A.

Monfalcone

Liebherr-Utensili s. r. l.

Collegno

Netherlands

Liebherr-Maritime Benelux B.V.

Amersfoort

Liebherr-Nederland B.V.

Amersfoort

Norway

Liebherr-Norge AS

Ingeberg

Europe

Austria

Hotel Löwen Schruns GmbH
Schruns
Interalpen-Hotel Tyrol GmbH
Telfs
Liebherr-Hausgeräte Lienz GmbH
Lienz
Liebherr-International Austria GmbH
Bischofshofen
Liebherr-MCCtec GmbH
Nenzing
Liebherr Österreich Vertriebs- und Service GmbH
Bischofshofen
Liebherr-Transportation Systems GmbH
Korneuburg
Liebherr-Transportation Systems GmbH & Co KG
Korneuburg
Liebherr-Werk Bischofshofen GmbH
Bischofshofen
Liebherr-Werk Nenzing GmbH
Nenzing
Liebherr-Werk Telfs GmbH
Telfs

Poland

Liebherr-Polska sp. z o.o.
Ruda Śląska

Portugal

Liebherr Portugal, Lda.
Venda do Pinheiro

Romania

Liebherr-Romania S. R. L.
Bucharest

Russia

Liebherr-Aerospace Nizhny Novgorod OOO
Nizhny Novgorod
Liebherr-Aerospace Russland OOO
Moscow
Liebherr Financial Services OOO
Moscow
Liebherr-Nizhny Novgorod OOO
Nizhny Novgorod
Liebherr-Russland OOO
Moscow

Sweden

Liebherr-Sverige AB
Västerås

Switzerland

Eglesia AG
Bulle
Liebherr-Baumaschinen AG
Reiden
Liebherr-Components AG
Nussbaumen
Liebherr-Component Technologies AG
Bulle
Liebherr-Export AG
Nussbaumen
Liebherr-Hotels AG
Bulle
Liebherr-Industrieanlagen AG
Bulle
Liebherr-International AG
Bulle
Liebherr-Intertrading AG
Bulle
Liebherr Machines Bulle SA
Bulle
Mariso Bulle S. A.
Bulle

Africa / Near and Middle East

Spain

Liebherr Iberica, S.L.
Azuqueca de Henares
Liebherr Industrias Metálicas, S.A.
Pamplona

Czechia

Liebherr-Stavební stroje CZ s.r.o.
Brno

Turkey

Liebherr Makine Ticaret Servis Limited Şirketi
Istanbul

Hungary

Liebherr-Építőipari Gépek Magyarország Kft.
Győr

United Kingdom

Liebherr-Great Britain Ltd.
Biggleswade
Liebherr-Rental Ltd.
Biggleswade
Liebherr Sunderland Works Ltd.
Sunderland

Algeria

Liebherr Algérie, EURL
Algier

Ghana

Liebherr-Ghana Ltd.
Accra

Morocco

Liebherr-Maroc SARL
Casablanca

Mozambique

Liebherr-Mozambique, Lda.
Maputo

Nigeria

Liebherr-Nigeria Ltd.
Abuja

Zambia

Liebherr Zambia Ltd.
Lusaka

Saudi Arabia

Saudi Liebherr Company Ltd.
Jeddah (60%)

South Africa

Liebherr-Africa (Pty) Ltd
Springs

United Arab Emirates

Liebherr Equipment Services Middle East L.L.C.
Dubai
Liebherr Middle East FZE
Dubai

North America

Canada

Liebherr-Canada Ltd.
Burlington, ON

Mexico

Liebherr Mexico, S. de R. L. de C. V.
Mexico City
Liebherr Monterrey, S. de R. L. de C. V.
Monterrey
Liebherr Servicios Monterrey, S. de R. L. de C. V.
Monterrey

USA

HL Farm, LLC
Newport News, VA
Liebherr Aerospace Saline, Inc.
Saline, MI
Liebherr-America, Inc.
Newport News, VA
Liebherr Automation Systems Co.
Saline, MI
Liebherr Gear and Automation Technologies, Inc.
Saline, MI
Liebherr Mining Equipment Newport News Co.
Newport News, VA
Liebherr USA, Co.
Newport News, VA

Central and South America

Argentina

Liebherr-Argentina S. A.
Buenos Aires

Brazil

Liebherr Aerospace Brasil Eireli
Guaratinguetá
Liebherr Brasil Eireli
Guaratinguetá

Chile

Liebherr Chile SpA
Santiago de Chile

Colombia

Liebherr Colombia SAS
Bogotá D.C.

Panama

Liebherr Panama S. A.
Panama City

Peru

Liebherr Peru S.A.C.
Lima

Asia and Oceania

Australia

Liebherr-Australia Pty. Ltd.
Adelaide

India

Liebherr Appliances India Private Limited
Mumbai

Liebherr CMCTec India Private Limited
Pune

Liebherr India Private Limited
Mumbai

Liebherr Machine Tools India Private Limited
Bangalore (60%)

Indonesia

PT. Liebherr Indonesia Perkasa
Jakarta

Japan

Liebherr Japan Co., Ltd.
Yokohama

Kazakhstan

Liebherr Kasachstan TOO
Almaty

Malaysia

Liebherr Appliances Kluang SDN. BHD.
Kluang

Liebherr Sales Kluang SDN. BHD.
Kluang

New Caledonia

Liebherr-Nouvelle-Calédonie SAS
Nouméa

Singapore

Liebherr-Singapore Pte Ltd
Singapur

South Korea

Liebherr Mobile Cranes Korea Ltd.
Seoul

Thailand

Liebherr (Thailand) Co., Ltd.
Rayong

PR China

Liebherr (China) Co., Ltd.
Shanghai

Liebherr Components (Dalian) Co., Ltd.
Dalian

Liebherr (HKG) Limited
Hongkong SAR

Liebherr LAMC Aviation (Changsha) Co., Ltd.
Changsha (50%)

Liebherr Machinery (Dalian) Co., Ltd.
Dalian

Liebherr Purchasing (Dalian) Co., Ltd.
Dalian

Liebherr Transportation Systems (China) Co., Ltd.
Pinghu

Xuzhou Liebherr Concrete Machinery Co., Ltd.
Xuzhou

**Zhejiang Liebherr Zhongche
Transportation Systems Co., Ltd.**
Zhuji (70%)

