

---

# Whatever way the wind blows

---

Cranes for wind power

**LIEBHERR**

Mobile and crawler cranes





# Definitions of terms







Radius

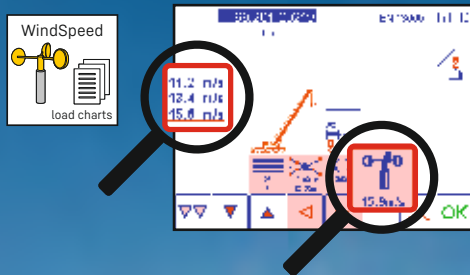
Height of hub

Hook height

## Concepts for wind power

	Size of facility	Economical transportation	Moving on the jobsite	Flexibility
LTM 	■ ■ ■ ■ □ □	■ ■ ■ ■ ■ ■	■ ■ ■ ■ □ □	■ ■ ■ ■ ■ ■
LR 	■ ■ ■ ■ ■ ■	■ ■ ■ □ □ □	■ ■ ■ ■ □ □	■ ■ ■ ■ ■ ■
LR-W 	■ ■ ■ ■ □ □	■ ■ ■ □ □ □	■ ■ ■ ■ ■ ■	■ ■ □ □ □ □
LG 	■ ■ ■ ■ ■ ■	■ ■ ■ □ □ □	■ ■ ■ □ □ □	■ ■ ■ □ □ □

Increased flexibility and safety by using lifting capacity tables with different maximum wind speeds.



# Concepts for wind power

## Telescopic cranes

### Telescopic mobile crane

- Driving on public roads
- Economical transportation and short erection times
- Limited space requirement for crane erection
- Driving from job site to job site with retracted telescopic boom, Y-guying system, additional equipment and partial ballast on 3 m wide roads
- Universally employable: industry, infrastructural measures, wind power



Hub height	LTM 1350-6.1	LTM 1400-7.1	LTM 1450-8.1	LTM 1500-8.1	LTM 1650-8.1	LTM 1750-9.1	LTM 11200-9.1
80 m	21.1 t	27.5 t	27.2 t	56 t	68 t	92.1 t	141 t
100 m	10.1 t	14.9 t	14.9 t	31 t	45 t	65.6 t	97 t
140 m	-	-	-	-	12.7 t	14.3 t	26.1 t
	Page 6	Page 8	Page 10	Page 12	Page 14	Page 16	Page 18

### Example:

You are looking for a mobile crane to erect a wind turbine with a hub height of 100 m. The maximum unit weight is approx. 25 t.

Hub height	LTM 1350-6.1	LTM 1400-7.1	LTM 1450-8.1	LTM 1500-8.1	LTM 1650-8.1	LTM 1750-9.1	LTM 11200-9.1
100 m	10.1 t	14.9 t	14.9 t	31 t	45 t	65.6 t	97 t
	Page 6	Page 8	Page 10	Page 12	Page 14	Page 16	Page 18



Starting from the LTM 1500-8.1 you will find the suitable solution for your project. See page 12.

## Lattice boom cranes

### Lattice boom crawler crane LR

- Highest capacity and lifting height
- Movable with complete equipment on wide tracks
- Universally employable: heavy load, industry, wind power
- Efficient for operation in wind parks as well as for single units

### Narrow track lattice boom crawler crane LR 1600/2-W

- Movable on narrow roads
- Driving with long boom systems
- With derrick system also capable for large wind generators
- Especially efficient for jobs in wind parks

### Lattice boom mobile crane LG 1750

- Basic unit drivable on public roads
- Less transportation units than lattice boom crawler cranes
- Universally employable: heavy load, industry, wind power
- Efficient for operation in wind parks as well as for single units
- Dismantling of the crane for relocation, basic unit drives with only 3 m width



### Lattice boom cranes without derrick system

Economical installation of wind turbines up to 120 m hub height

Hub height	LR 1350/1	LR 1500	LR 1600/2	LR1600/2-W	LR 1700-1.0	LR 1750/2	LR 1800-1.0	LR 11000	LG 1750
80 m	83 t	118 t	137 t	132 t	170 t	150 t	185 t	253 t	150 t
100 m	-	88 t	118 t	106 t	151 t	124 t	172	253 t	144 t
	Page 20	Page 22	Page 24	Page 26	Page 28	Page 30	Page 32	Page 34	Page 38

### Lattice boom cranes with derrick system

Maximum utilisation of load capacity

Hub height	LR 1350/1	LR 1500	LR 1600/2	LR1600/2-W	LR 1700-1.0	LR 1750/2	LR 1800-1.0	LR 11000	LG 1750
100 m	69 t	90 t	137 t	137 t	170 t	150 t	185 t	253 t	150 t
140 m	-	-	87 t	95 t	135 t	150 t	157 t	202 t	150 t
	Page 20	Page 22	Page 24	Page 26	Page 28	Page 30	Page 32	Page 34	Page 38



# Telescopic mobile crane



350 t



70 m



455 kW  
619 HP



180 kW  
245 HP



140 t



12x6x12  
12x8x12



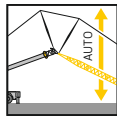
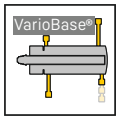
85



# LTM 1350-6.1

**A real power pack, but flexible as well!**

- 6-axle all terrain chassis
- Longest telescopic boom of its class
- Self-assembly of Y-guying system for telescopic boom
- Top capacities at the fixed jib for erection and maintenance of wind power generators
- Sensitive manoeuvring due to comfortable all-wheel steering and torque converter
- Economical transportation logistics as for maximum capacities at steep working radii only partial ballast is needed



## Telescopic boom + Y-guying system + fixed jib

Hub height	Max. capacity at radius	Hook height	System
60 m	35 t x 16 m	70 m	TYVEF
80 m	21.1 t x 18 m	88 m	TYVEF
100 m	8.2 t x 22 m	106 m	TYVEFH



## Telescopic boom + Y-guying system + luffing jib

Hub height	Max. capacity at radius	Hook height	System
60 m	31 t x 18 m	71 m	TYVEN
80 m	17.3 t x 24 m	92 m	TYVEN
100 m	10.1 t x 30 m	109 m	TYVEN





# Telescopic mobile crane



400 t



60 m



450 kW  
612 HP



240 kW  
326 HP



140 t



14 x 6 x 14  
14 x 8 x 14



85





# LTM 1400-7.1

**Manoeuvrable and flexible despite having seven axles.**

- 7-axle all terrain chassis
- Strong boom system due to Y-guying system and spacer
- Self-assembly of Y-guying system for telescopic boom
- Sensitive manoeuvring due to comfortable all-wheel steering and torque converter
- Hydraulic adjustment of the ballast radius from 5.6 m to 6.6 m, thus reduction of ballast transportation
- Economical transportation logistics as for maximum capacities at steep working radii only partial ballast is needed

## Telescopic boom + Y-guying system + fixed jib

Hub height	Max. capacity at radius	Hook height	System
60 m	29.3 t x 16 m	70 m	TYSF
80 m	16.8 t x 16 m	87 m	TYSF
100 m	7.4 t x 22 m	107 m	TYSF



## Telescopic boom + Y-guying system + luffing jib

Hub height	Max. capacity at radius	Hook height	System
60 m	46.5 t x 16 m	68 m	TYSN
80 m	27.5 t x 22 m	88 m	TYSN
100 m	14.9 t x 30 m	108 m	TYSN



# Telescopic mobile crane



450 t



85 m



505 kW  
686 HP



134 t



16x8x16



85

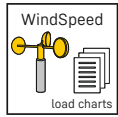
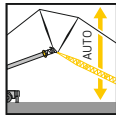
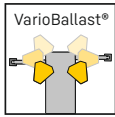
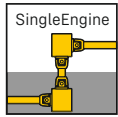
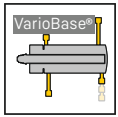




# LTM 1450-8.1

## The big fast-erecting crane!

- 8-axle all-terrain chassis
- Travel on public roads with 85 m telescopic booms and four support beams at 12 t axle load
- Hydraulically variable adjustment of the ballast radius from 5 m to 7 m, thus saving on ballast transport
- Sensitive manoeuvring thanks to comfortable all-wheel steering and torque converter
- Economical transport logistics, as for maximum load-bearing capacity in steep working areas only a partial ballast is required



## Telescopic boom

Hub height	Max. capacity at radius	Hook height	System
60 m	33.7 x 16 m	68 m	T



## Telescopic boom + swing-away jib

Hub height	Max. capacity at radius	Hook height	System
80 m	17.4 x 17 m	88 m	TK



## Telescopic boom + luffing jib

Hub height	Max. capacity at radius	Hook height	System
60 m	50 t x 20 m	68 m	TN
80 m	27.2 t x 24 m	89 m	TN
100 m	14.9 t x 32 m	108 m	TN
120 m	3.7 t x 36 m	130 m	TN



# Telescopic mobile crane



500 t



50 m / 84 m



500 kW  
680 HP



240 kW  
326 HP



165 t



16x8x12



85 km/h





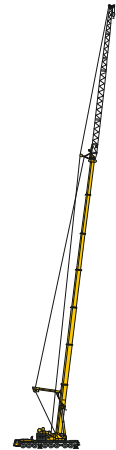
# LTM 1500-8.1

The most successful large crane of all time.

- 8-axle all terrain chassis
- Bestseller for the assembly of wind generators of the 1.5 MW class
- Multi variable boom system: 50 m and 84 m telescopic boom, fixed and luffing lattice jib
- Sensitive manoeuvring due to comfortable all-wheel steering and torque converter
- Economical transportation logistics as for maximum capacities at steep working radii only partial ballast is needed

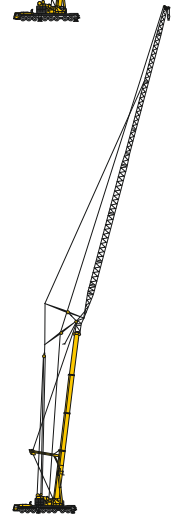
## 84 m-telescopic boom + Y-guying system + fixed jib

Hub height	Max. capacity at radius	Hook height	System
60 m	64 t x 16 m	72 m	TY3ENZF
80 m	38.5 t x 20 m	88 m	TY3ENZF
100 m	17.2 t x 24 m	109 m	TY3ENZF



## 50 m-telescopic boom + Y-guying system + luffing jib

Hub height	Max. capacity at radius	Hook height	System
60 m	78 t x 18 m	72 m	TY3SN
80 m	56 t x 24 m	90 m	TY3SN
100 m	31 t x 30 m	109 m	TY3SN
105 m	24 t x 34 m	116 m	TY3SN
120 m	16.1 t x 38 m	129 m	TY3SN



# Telescopic mobile crane



700 t



80 m



505 kW  
686 HP



175 t



16x8x16



85

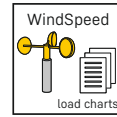
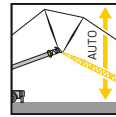
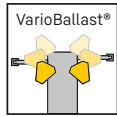
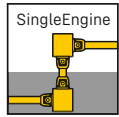
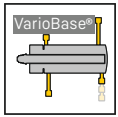




# LTM 1650-8.1

## The maximum on eight axles.

- 8-axle all-terrain chassis
- Driving on public roads with 54 m telescopic boom and the front outrigger beams at 12 t axle load
- Hydraulically variable adjustment of the ballast radius from 6.4 m to 8.4 m, thus saving on ballast transport
- Sensitive manoeuvring thanks to comfortable all-wheel steering and torque converter
- Automated raising and lowering of the luffing jib
- Economical transportation logistics



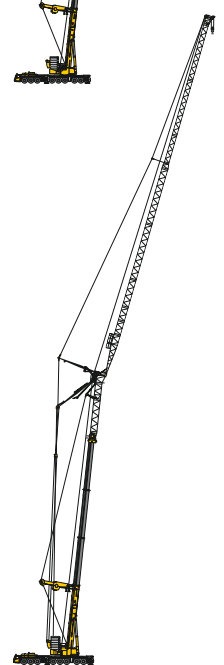
## Telescopic boom + Y-guying system + fixed jib

Hub height	Max. capacity at radius	Hook height	System
80 m	56.4 t x 16 m	89 m	T5YVENZF 15°



## Telescopic boom + Y-guying system + luffing jib

Hub height	Max. capacity at radius	Hook height	System
80 m	68 t x 21 m	87 m	T3YV2EN
90 m	56.3 t x 24 m	97 m	T3YV2EN
100 m	45 t x 28 m	107 m	T3YV2EN
110 m	34.6 t x 32 m	117 m	T3YV2EN
120 m	26.4 t x 32 m	127 m	T3YV2EN
130 m	18.7 t x 38 m	137 m	T3YV2EN
140 m	12.7 t x 42 m	147 m	T5YVEN



# Telescopic mobile crane



800 t



52 m



505 kW  
686 HP



300 kW  
408 HP



204 t



18 x 8 x 18



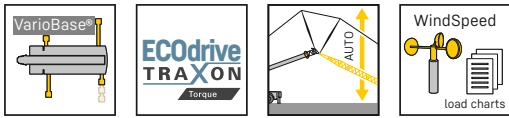
85



# LTM 1750-9.1

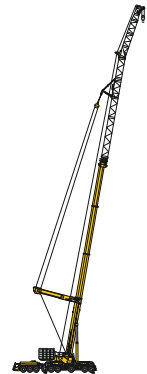
Wide range of uses with powerful boom systems.

- 9-axle all terrain chassis
- Driving on public roads with telescopic boom and 2 outrigger beams at 12 t axle load
- Most modern working equipment: fixed and luffing lattice jib, boom extension and auxiliary jib are optimized for the assembly of wind power generators
- Sensitive manoeuvring due to comfortable all-wheel steering and torque converter
- Economical transportation logistics as for maximum capacities at steep working radii only partial ballast is needed



## Telescopic boom + Y-guying system + fixed jib

Hub height	Max. capacity at radius	Hook height	System
80 m	56.5 t x 18 m	88 m	TYV23E3F 10°



## Telescopic boom + Y-guying system + luffing jib

Hub height	Max. capacity at radius	Hook height	System
80 m	92.1 t x 19 m	89 m	TYV23EN
90 m	79.8 t x 21 m	98 m	TYV23EN
100 m	65.6 t x 24 m	108 m	TYV23EN
105 m	61.2 t x 25 m	112 m	TYV23EN
110 m	46 t x 28 m	118 m	TYV2EN
120 m	33 t x 34 m	129 m	TYV2EN
130 m	22.8 t x 38 m	138 m	TYV2EN
140 m	14.3 t x 42 m	148 m	TYV2EN





# Telescopic mobile crane



1,200 t



55 m /  
100 m



505 kW  
686 HP



300 kW  
408 HP



202 t



18 x 8 x 18



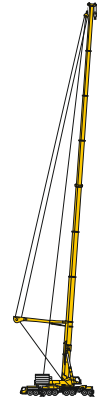
80 km/h



# LTM 11200-9.1

## The largest Liebherr mobile crane.

- 9-axle all terrain chassis
- Strongest mobile crane worldwide
- Driving on public roads at 12 t axle load with slewing platform and 4 outrigger beams without telescopic boom
- Driving on jobsites with 100 m telescopic boom and Y-guying system plus attachments
- Sensitive manoeuvring due to comfortable all-wheel steering and torque converter
- Economical transportation logistics as for maximum capacities at steep working radii only partial ballast is needed

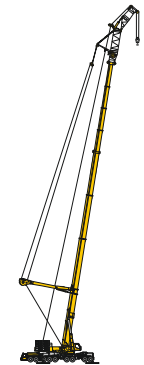


### 100 m-telescopic boom + Y-guying system

Hub height	Max. capacity at radius	Hook height	System
80 m	84 t x 16 m	92 m	T7Y

### 100 m-telescopic boom + Y-guying system + fixed jib

Hub height	Max. capacity at radius	Hook height	System
80 m	94 t x 20 m	89 m	T7YVENZF
100 m	76 t x 16 m	107 m	T7YVEV2NZF
105 m	65 t x 16 m	114 m	T7YVEV3V2NZF



### 55 m-telescopic boom + Y-guying system + luffing jib

Hub height	Max. capacity at radius	Hook height	System
80 m	141 t x 18 m	90 m	T3YVEN
100 m	97 t x 22 m	112 m	T3YV2VEN
105 m	83 t x 24 m	117 m	T3YV2VEN
120 m	58 t x 32 m	128 m	T3YV2VEN
130 m	38 t x 36 m	138 m	T3YV2VEN
140 m	26.1 t x 44 m	148 m	T3YV2VEN
150 m	15.8 t x 50 m	158 m	T3YV2VEN



# Lattice boom crawler crane

---



350 t



270 kW  
367 HP



125 t



38 t



max.  
210 t x 15 m



7.2 m





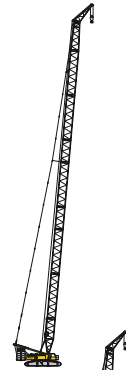
# LR 1350/1

## Compact and economic

- Most compact crane of its class, efficient transportation due to optimized component weights
- Complete self erection with optional ballasting device possible
- Especially economical crane for assembly of units of the 2 to 2.5 MW class
- Special wind power configuration S3HS with and without derrick system available
- Fast and simple assembly of the HS-assembly jib
- 1.5 m crawler plates available for reduced ground pressure

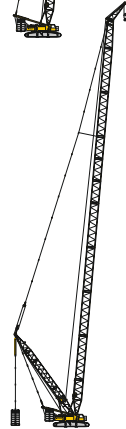
## Main boom + assembly jib

Hub height	Max. capacity at radius	Hook height	System
80 m	83 t x 14 m	92 m	S3HS



## Main boom + derrick system + assembly jib

Hub height	Max. capacity at radius	Hook height	System
80 m	88 t x 14 m	92 m	S3DHSB
100 m	69 t x 20 m	109 m	S3DHSB



# Lattice boom crawler crane



500 t



350 kW  
476 HP



170 t



40 t



max.  
280 t x 16 m



7.6 m



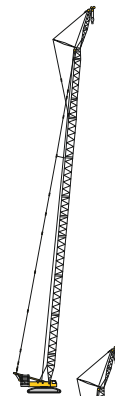
# LR 1500

**Powerful, smart, compact.**

- The latest crawler crane technology
- Improved wind power systems for tower heights of 80 m to 100 m
- Worldwide cost-effective transport with a transport weight of just 45 t
- The dimensions of a 400 t class with the lifting capacity of a 500 t crane over its entire working range

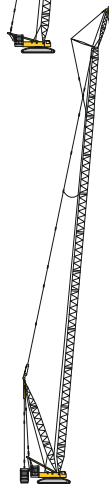
## Main boom + fixed jib

Hub height	Max. capacity at radius	Hook height	System
80 m	103 t x 16 m	94 m	SL3F
80 m	118 t x 16 m	94 m	SL8F
90 m	87 t x 18 m	103 m	SL3F
90 m	99 t x 18 m	103 m	SL8F
100 m	77 t x 18 m	112 m	SL3F
100 m	88 t x 18 m	112 m	SL8F



## Main boom + derrick system + fixed jib

Hub height	Max. capacity at radius	Hook height	System
100 m	90 t x 24 m	112 m	SL4DFB
120 m	73 t x 24 m	130 m	SL4DFB
130 m	59 t x 22 m	142 m	SL4DFB





# Lattice boom crawler crane



600 t



400 kW  
544 HP



190 t



65 t



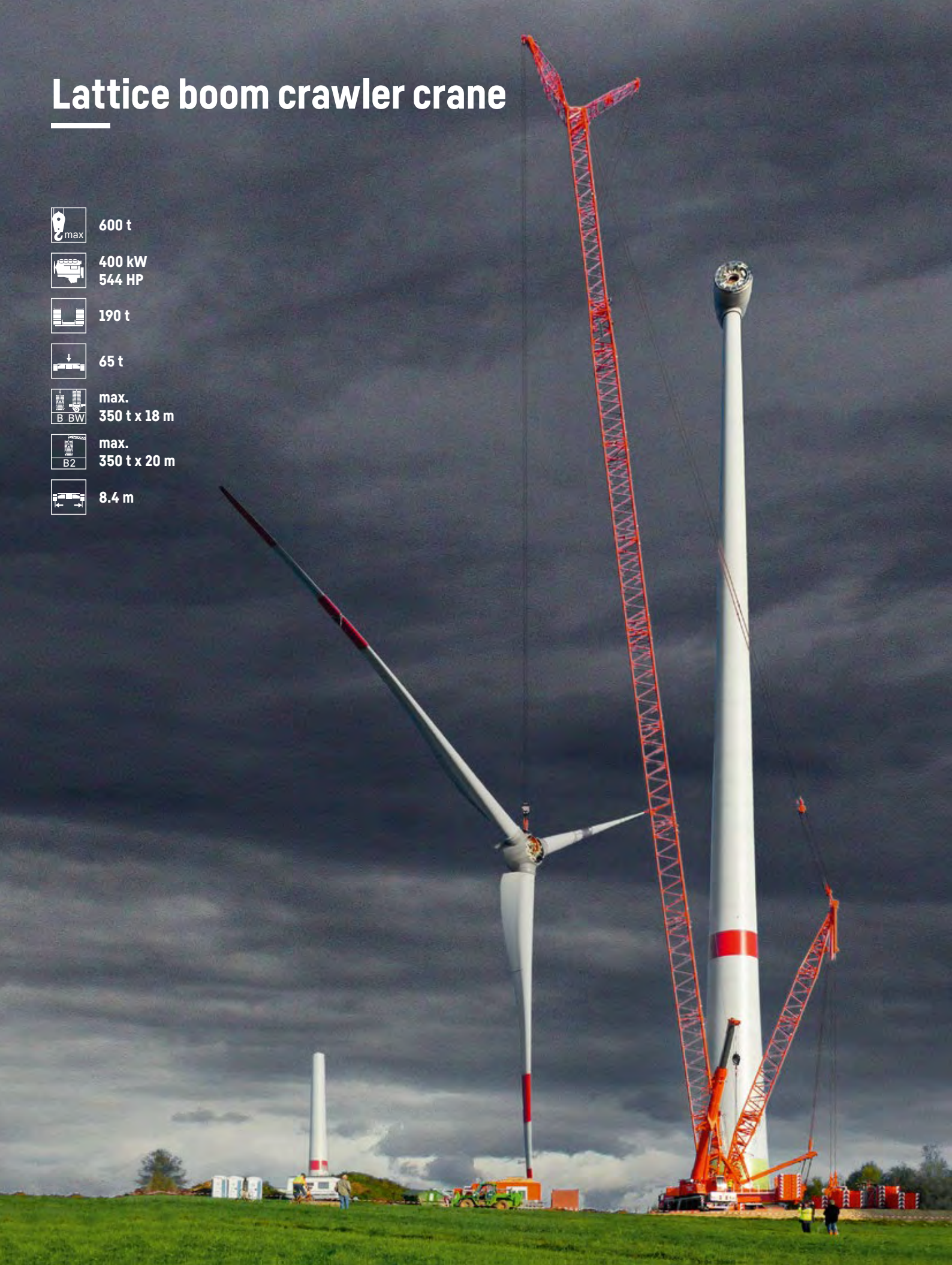
max.  
350 t x 18 m



max.  
350 t x 20 m



8.4 m



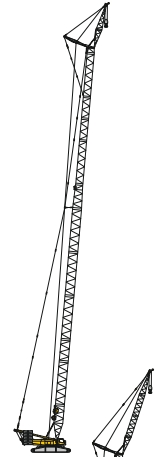
# LR 1600/2

## Established technology

- Specially optimized fixed jib for wind power
- Simple assembly of wind power generators on 105 m towers without derrick system
- Extendable with derrick system for tower heights up to 150 m
- System SL13DFB with unrivalled capacities in the 600 t class to 164 m hook height
- Optional 2 m crawler plates and 4-fold drive available
- Also available with narrow track crawler chassis - see LR 1600/2-W

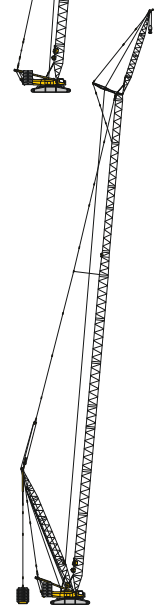
## Main boom + fixed jib

Hub height	Max. capacity at radius	Hook height	System
80 m	119 t x 18 m	93 m	SL3F
80 m	137 t x 18 m	93 m	SL8F3
100 m	105 t x 18 m	114 m	SL3F
100 m	118 t x 18 m	114 m	SL8F3
105 m	93 t x 18 m	117 m	SL3F



## Main boom + derrick boom + fixed jib

Hub height	Max. capacity at radius	Hook height	System
120 m	121 t x 20 m	134 m	SL13DFB
135 m	96 t x 20 m	147 m	SL13DFB
140 m	87 t x 24 m	152 m	SL13DFB
150 m	75 t x 24 m	161 m	SL13DFB2
150 m	71 t x 24 m	164 m	SL13DFB2





# Narrow track lattice boom crawler crane



600 t



400 kW  
544 HP



190 t



65 t



max.  
350 t x 18 m



14 m x 14 m



3.8 m



5.8 m





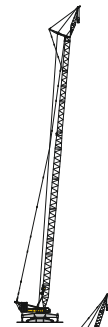
# LR 1600/2-W

## Strong on narrow track

- Optimal driving on narrow roads, total width of the crawler chassis only 5.8 m
- High safety during driving as the support plates can be kept close to the ground and the folding beams can be adapted to the available road width
- Driving with 108 m main boom and 12 m fixed jib
- High stability during crane operation due to crane supports
- 2 m-crawler plates, quick connection and 4-fold crawler drive standard
- Radio remote control for driving and supporting

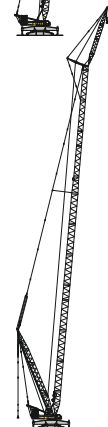
### Main boom + fixed jib

Hub height	Max. capacity at radius	Hook height	System
80 m	132 t x 18 m	95 m	SL3F
100 m	106 t x 18 m	112 m	SL3F
105 m	92 t x 18 m	119 m	SL3F



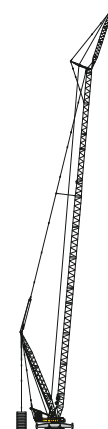
### Main boom + derrick boom + fixed jib

Hub height	Max. capacity at radius	Hook height	System
100 m	137 t x 18 m	112 m	SL4DF
120 m	115 t x 20 m	130 m	SL4DF
120 m	104 t x 20 m	136 m	SL4DF



### Main boom + derrick system + fixed jib

Hub height	Max. capacity at radius	Hook height	System
135 m	100 t x 22 m	148 m	SL13DFB
140 m	95 t x 24 m	151 m	SL13DFB2
150 m	78 t x 24 m	162 m	SL13DFB2
150 m	73 t x 24 m	165 m	SL13DFB2



# Lattice boom crawler crane



700 t



400 kW  
544 HP



230 t



90 t



max.  
375 t x 18 m



max.  
375 t x 21 m



max.  
375 t x 21 m



8.7 m



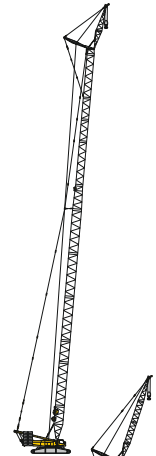
# LR 1700-1.0

## Blending worlds, merging types

- The perfect crane for wind power
- Unbeatable lattice boom technology – dimensions from the 600 t class and lifting capacities from the 750 t class
- Latest generation of fixed jib F with 170 t lifting capacity and integral runner

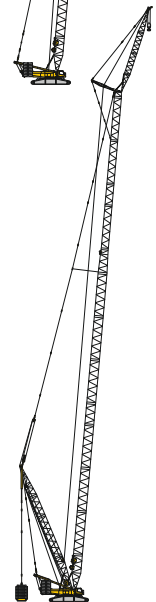
### Main boom + fixed jib

Hub height	Max. capacity at radius	Hook height	System
80 m	170 t x 16 m	93 m	HSL3AF
90 m	168 t x 16 m	102 m	HSL3AF
100 m	151 t x 17 m	110 m	HSL3AF
105 m	140 t x 18 m	113 m	HSL3AF
105 m	135 t x 18 m	116 m	HSL2AF
110 m	114 t x 18 m	119 m	HSL2AF
110 m	103 t x 19 m	122 m	HSL2AF



### Main boom + derrick system + fixed jib

Hub height	Max. capacity at radius	Hook height	System
140 m	135 t x 24 m	152 m	HSL9ADFBV
150 m	120 t x 24 m	161 m	HSL9ADFBV
160 m	109 t x 24 m	170 m	HSL9AZDFBV
165 m	105 t x 28 m	173 m	HSL9AZDFBV
166 m	99 t x 26 m	177 m	HSL9AZDFBV





# Lattice boom crawler crane



750 t



455 kW  
618 HP



245 t



95 t



max.  
400 t x 20 m



8.8 m



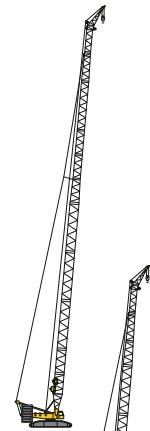
# LR 1750/2

Suitable for universal use, ideal.

- New visionary SX system increases load capacity and lifting height
- Boom parts interchangeable with LG 1750 lattice boom mobile crane
- Robust chassis with generously dimensioned crawler drive

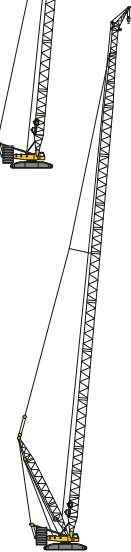
## Main boom + assembly jib

Hub height	Max. capacity at radius	Hook height	System
80 m	117 t x 16 m	94 m	HSL8HS
80 m	150 t x 20 m	97 m	HSL20F2
100 m	99 t x 18 m	115 m	HSL8HS
100 m	124 t x 20 m	114 m	HSL20F2



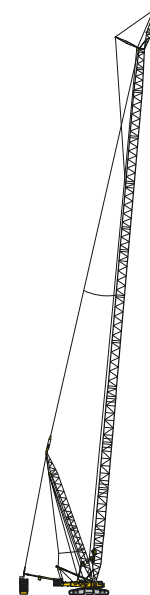
## Main boom + derrick boom + assembly jib

Hub height	Max. capacity at radius	Hook height	System
140 m	89 t x 22 m	150 m	HSL7DHS
140 m	97 t x 26 m	150 m	SXL7D4HSB
150 m	94 t x 26 m	160 m	SXL7D4HSB
155 m	92 t x 28 m	166 m	SXL7D4HSB



## Main boom SX + derrick system + fixed jib

Hub height	Max. capacity at radius	Hook height	System
140 m	133 t x 28 m	152 m	SXD4F2B
140 m	147 t x 30 m	152 m	SX2D4F2B
140 m	150 t x 34 m	152 m	SX3D4F2B
150 m	119 t x 30 m	162 m	SXZD4F2B
150 m	135 t x 30 m	162 m	SX2ZD4F2B
150 m	141 t x 28 m	162 m	SX3ZD4F2B
165 m	99 t x 28 m	173 m	SXZD4F2B
165 m	113 t x 28 m	173 m	SX2ZD4F2B
165 m	118 t x 28 m	173 m	SX3ZD4F2B
166 m	93 t x 30 m	176 m	SXZD4F2B
166 m	106 t x 30 m	175 m	SX2ZD4F2B
166 m	110 t x 30 m	175 m	SX3ZD4F2B
170 m	85 t x 30 m	178 m	SXZD4F2B
170 m	62 t x 28 m	185 m	SX/SX2/SX3 D4F3B





# Lattice boom crawler crane



800 t



455 kW  
618 HP



230 t



90 t



max.  
400 t x 18 m



400 t x 23 m



9.0 m





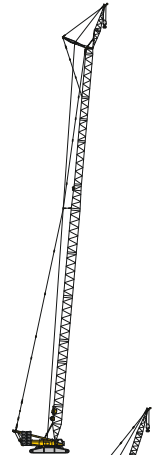
# LR 1800-1.0

## Strong!

- Top all-rounder
- Boom systems from a module system, which all fit together
- Simple switch to the world of industry
- Unbeatably low ground pressure using 2.4 m ground plates

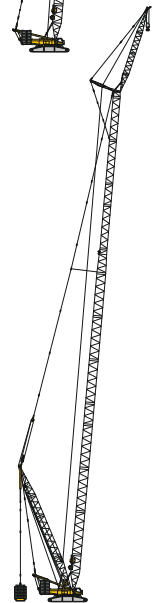
### Main boom + fixed jib

Hub height	Max. capacity at radius	Hook height	System
80 m	185 t x 18 m	95 m	HSL3AF
90 m	185 t x 17 m	101 m	HSL3AF
100 m	165 t x 19 m	113 m	HSL3AF
105 m	151 t x 19 m	119 m	HSL3AF



### Main boom + derrick system + fixed jib

Hub height	Max. capacity at radius	Hook height	System
140 m	157 t x 24 m	155 m	HSL2DFBV
150 m	134 t x 24 m	163 m	HSL2DFBV
160 m	114 t x 24 m	172 m	HSL2DFBV
165 m	98 t x 26 m	177 m	HSL2DFBV
170 m	90 t x 26 m	184 m	HSL2DFBV
180 m	59 t x 32 m	194 m	HSL2DFBV



# Lattice boom crawler crane



1,000 t



500 kW  
680 HP



250 t



130 t



max.  
450 t x 20 m



max.  
450 t x 30 m



max.  
450 t x 30 m



9.2 m



# LR 11000

**Stays strong when things get tight.**

- Excellent capacities over the complete working range
- Variable boom systems for the erection of wind power plants
- Also deployable with great flexibility in wind parks without derrick system
- Enormous capacity increases with PowerBoom
- Transportation optimized dimensions and weights
- Outstanding assembly times due to simple set-up concept

## Main boom + fixed jib

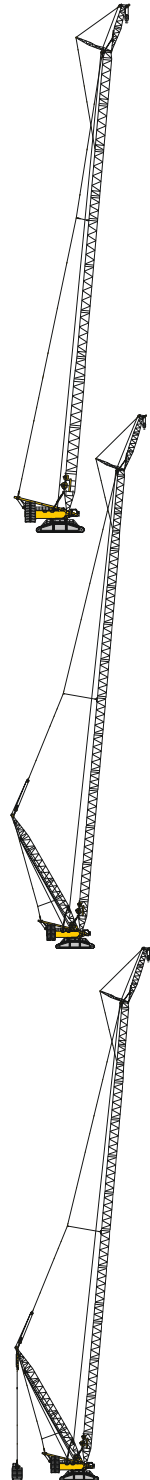
Hub height	Max. capacity at radius	Hook height	System
100 m	253 t x 17 m	114 m	SL8F2
105 m	233 t x 18 m	120 m	SL8F2
110 m	212 t x 19 m	123 m	SL8F2
115 m	193 t x 21 m	126 m	SL8F2

## Main boom + derrick system + fixed jib

Hub height	Max. capacity at radius	Hook height	System
120 m	209 t x 18 m	132 m	SL8DF2
130 m	184 t x 19 m	144 m	SL8DF2
135 m	160 t x 22 m	150 m	SL8DF2
140 m	145 t x 24 m	156 m	SL8DF2

## Main boom + derrick system + fixed jib

Hub height	Max. capacity at radius	Hook height	System
140 m	202 t x 24 m	156 m	SL10DF2BV
150 m	182 t x 24 m	156 m	SL10DF2BV
160 m	156 t x 24 m	174 m	SL10DF2BV
166 m	140 t x 24 m	180 m	SL10DF2BV
170 m	123 t x 28 m	186 m	SL10DF2BV
175 m	116 t x 28 m	189 m	SL10DF2BV
180 m	110 t x 30 m	192 m	SL10DF2BV





# Lattice boom crawler crane



1,350 t



705 kW  
1,020 HP



340 t



30 t



max.  
600 t x 30 m



11 m



# LR 11350

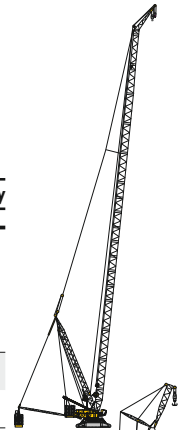
## Versatility with high lifting capacity.

- Heavy duty crane – also appropriate for use at wind generators at large installations in the near- and offshore areas
- Transportation optimized, no part wider than 3.5 m and heavier than 45 t
- Large and well-arranged crane cab with outstanding panorama view
- Operation also without derrick system
- Self-assembly of the crawler tracks

### Main boom + derrick system + assembly jib

Preliminary

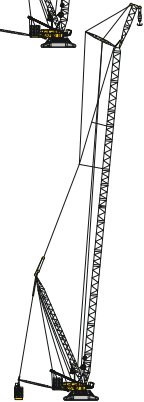
Hub height	Max. capacity at radius	Hook height	System
140 m	246 t x 28 m	152 m	SL2DHS
150 m	184 t x 24 m	165 m	SL2DHSB



### Main boom P + derrick system + fixed jib

Preliminary

Hub height	Max. capacity at radius	Hook height	System
140 m	370 t x 24 m	153 m	PD2FB





# Lattice boom mobile crane



750 t



505 kW  
686 HP



455 kW  
618 HP



250 t



max.  
400 t x 20 m



16 m x 16 m  
12 m x 12 m



80





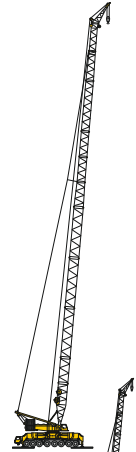
# LG 1750

## The perfect symbiosis of two worlds.

- Strongest lattice boom mobile crane worldwide
- Combination of the flexibility of a 750 t crawler crane with the mobility of a mobile crane
- Basic crane can be driven on regular roads within 3 m width
- SL8HS for 105 m turbines without derrick system – extendable with derrick system for hook heights of 146 m
- Heavy duty wind power equipment SL9 for 155 m hook height, SL12 for 160 m hook height
- Greatest number of available wind power configurations – SL8, SL7, SL9, SL12

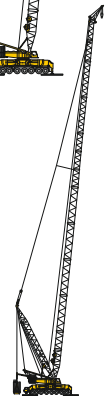
### Main boom + assembly jib

Hub height	Max. capacity at radius	Hook height	System
80 m	114 t x 18 m	103 m	SL8HS
80 m	150 t x 20 m	99 m	SL20F2
100 m	109 t x 18 m	117 m	SL8HS
100 m	144 t x 20 m	113 m	SL20F2
105 m	101 t x 18 m	120 m	SL8HS



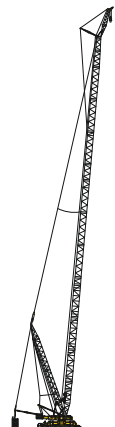
### Main boom + derrick boom + assembly jib

Hub height	Max. capacity at radius	Hook height	System
140 m	104 t x 26 m	152 m	SXL7D4HSB
150 m	101 t x 26 m	162 m	SXL7D4HSB
160 m	95 t x 28 m	172 m	SXL7D4HSB



### Main boom + derrick system + fixed jib

Hub height	Max. capacity at radius	Hook height	System
140 m	138 t x 30 m	154 m	SXL7D4HSB
140 m	150 t x 30 m	154 m	SX2D4F2B
140 m	150 t x 30 m	154 m	SX3D4F2B
150 m	127 t x 30 m	165 m	SX2D4F2B
150 m	143 t x 30 m	164 m	SX2ZD4F2B
150 m	148 t x 28 m	164 m	SX3ZD4F2B
165 m	105 t x 30 m	175 m	SXZD4F2B
165 m	122 t x 30 m	174 m	SX2ZD4F2B
165 m	127 t x 28 m	174 m	SX3ZD4F2B
166 m	98 t x 30 m	178 m	SXZD4F2B
166 m	111 t x 30 m	177 m	SXZD4F2B
166 m	115 t x 30 m	177 m	SX3ZD4F2B
170 m	91 t x 32 m	180 m	SXZD4F2B
170 m	62 t x 28 m	185 m	SX/SX2/SX3 D4F3B



# Customer Service

Personal. Competent. Reliable.



## To ensure your Liebherr remains a Liebherr.

- Commission and training by experienced service technicians
- Worldwide service network with over 80 branches
- 24/7 technical support worldwide
- Fast availability of spare parts
- Attractive packages for maintenance and service

Subject to modification

Liebherr-Werk Echingen GmbH · Postfach 1361 · 89582 Echingen, Germany  
+49 73 91 5 02-0 · [www.liebherr.com](http://www.liebherr.com)

Get Your  
Contact



Printed in Germany (1)  
lwe-pk-01-05-e01-2022