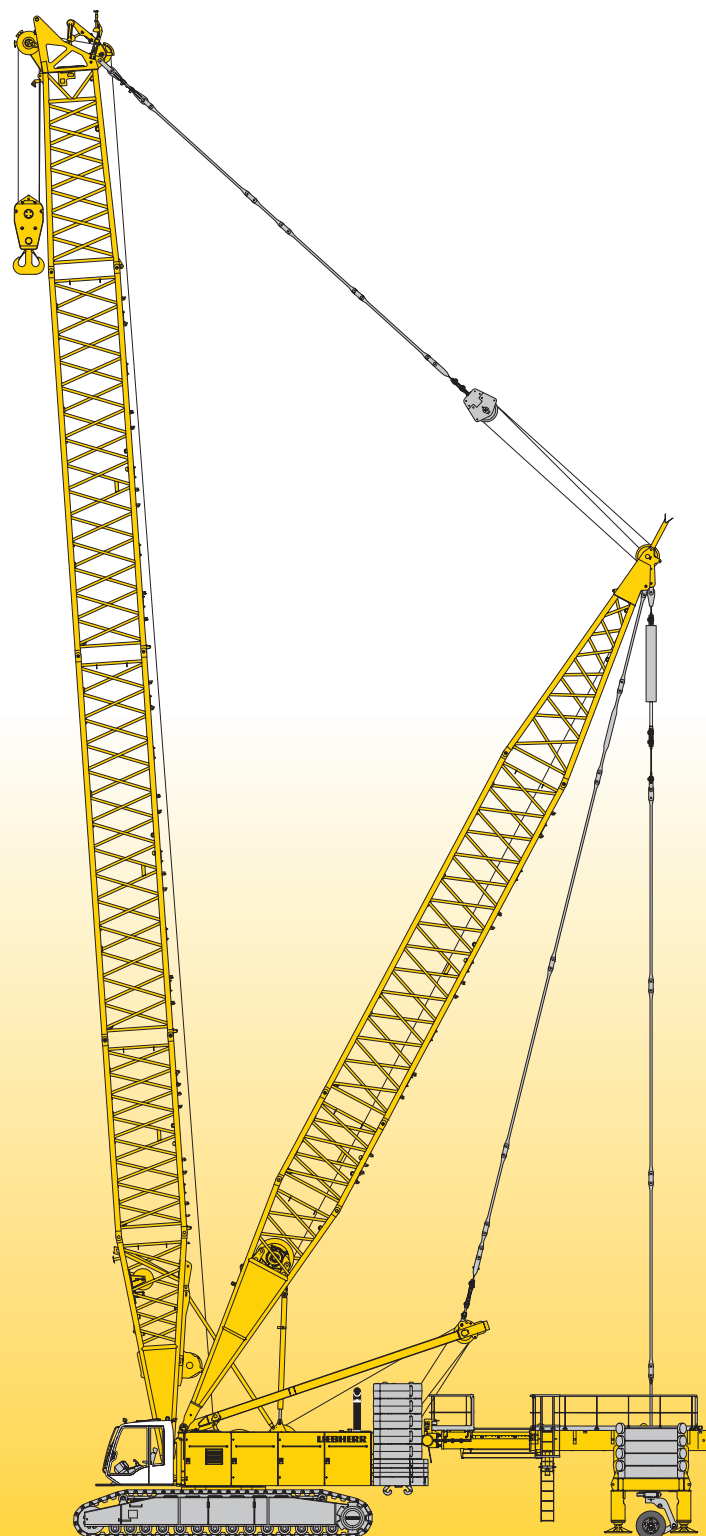


Technical data Hydraulic lift crane

LR 1280

Litronic®

Derrick equipment

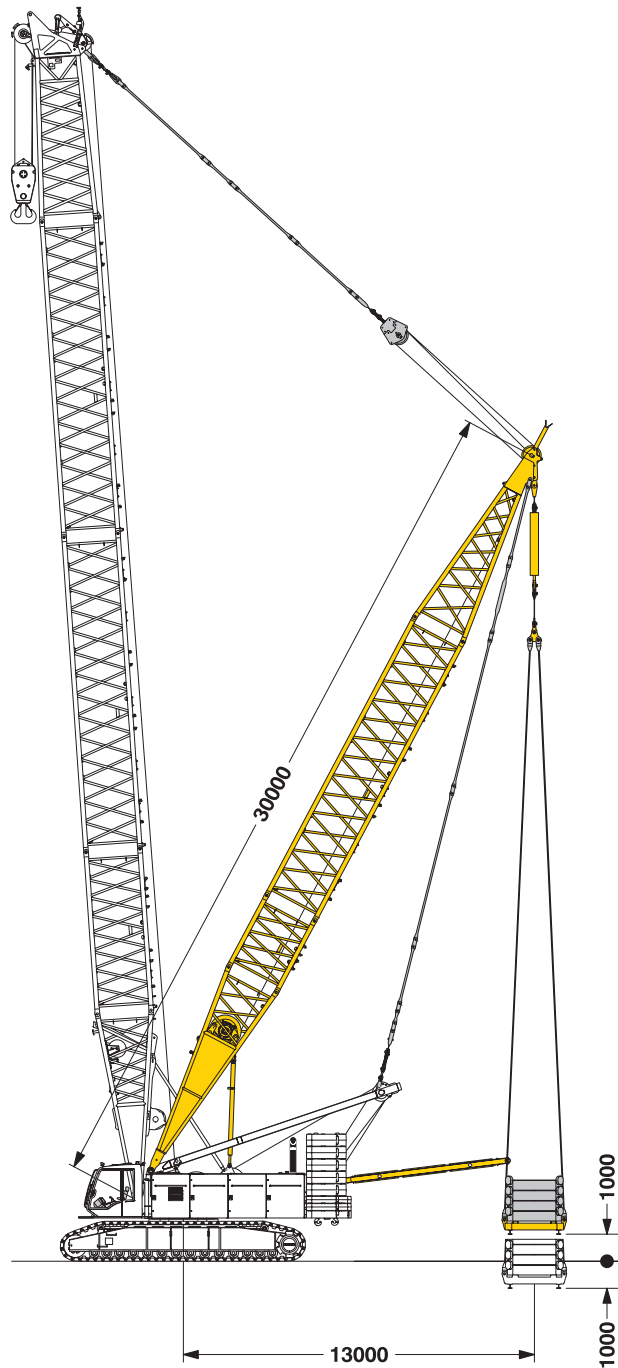


LIEBHERR

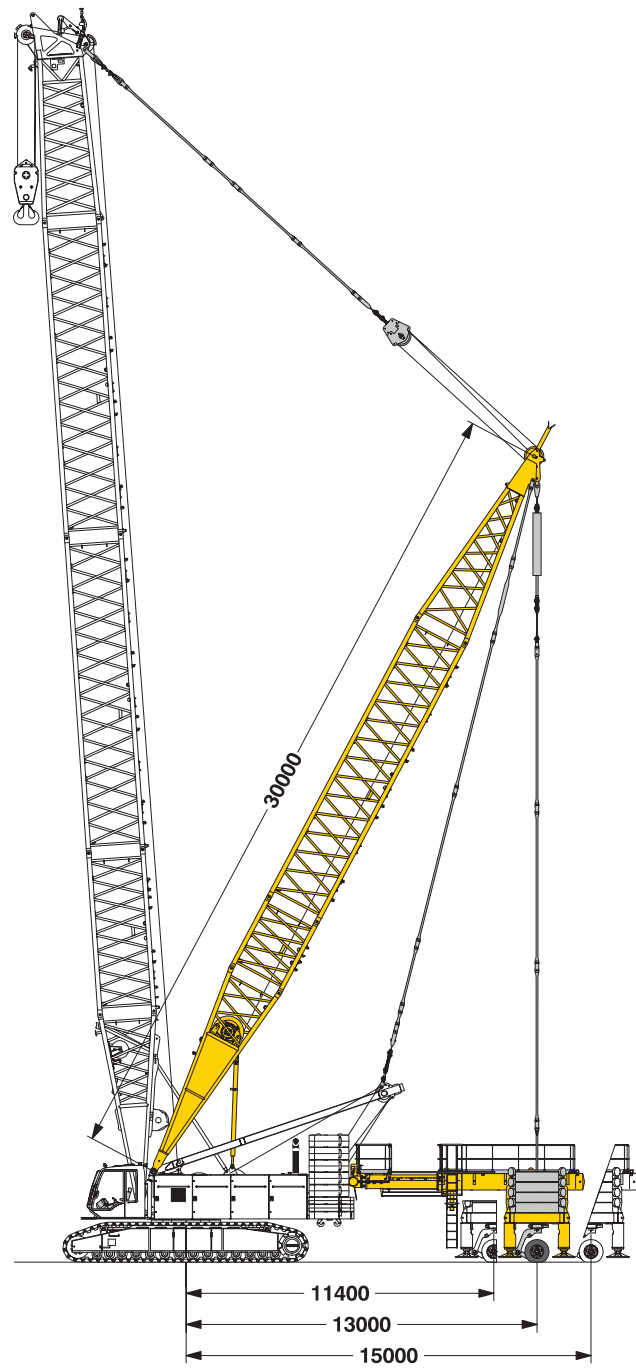
Dimensions

Basic machine with derrick equipment

Derrick equipment with suspended counterweight

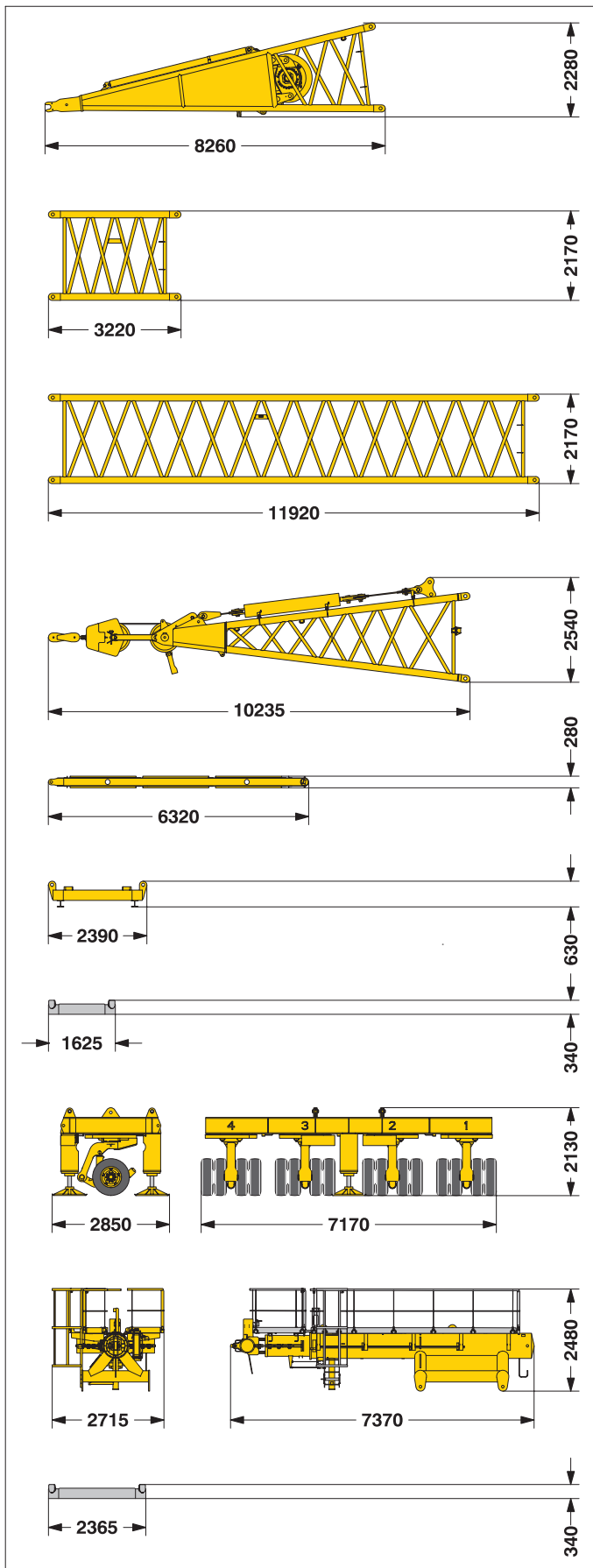


Derrick equipment with wheeled counterweight carriage



Transport dimensions and weights

Basic machine and boom (No. 2220.xx)



*) Including pendant straps; **) Including pendant ropes

Derrick foot (No. 2220.24)

Width	mm	2420
Weight incl. rope	kg	7800

Boom section (No. 2220.24)

3 m

Width	mm	2420
Weight*	kg	1030

Boom section (No. 2220.22)

11.7 m

Width	mm	2420
Weight*	kg	2560

Derrick head (No. 2220.22)

Width	mm	2420
Weight	kg	5400

Distance frame

Width	mm	2470
Weight	kg	495

Counterweight frame

Width	mm	5020
Weight**	kg	14360

Counterweight

Width	mm	1625
Weight	kg	5010

Wheeled counterweight carriage

Width	mm	2850
Weight*	kg	13155

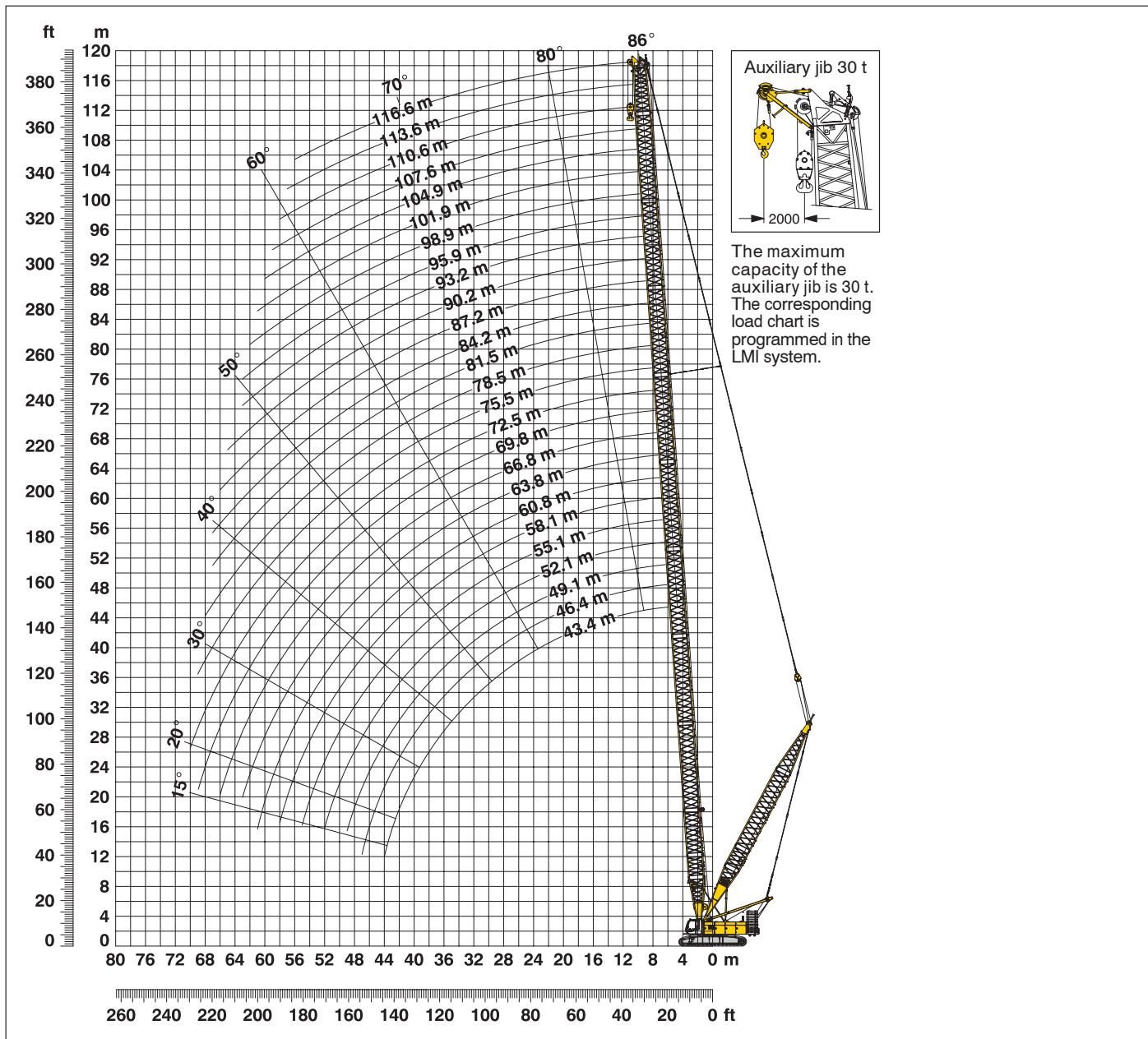
Telescopic unit

Width	mm	2715
Weight	kg	6640

Counterweight for wheeled carriage

Width	mm	1800
Weight	kg	7340

Working range - main boom (No. 2220.xx) **86° - 15°** 85.5 t counterweight and 36 t carbody counterweight



Main boom configuration (Table 1 - No. 2220.xx)

Configuration for boom lengths (43.4 m - 116.6 m)

Length	Amount of boom extensions																									
Boom foot 7.0 m	1	1	1	1	1	1	1	1	1	1	1	1	1	1	1	1	1	1	1	1	1	1	1			
Boom insert 3.0 m		1		1		1		1		1		1		1		1		1		1		1				
Boom insert 6.0 m	1	1			1	1			1	1			1	1			1	1			1	1				
Boom insert 11.7 m	2	2	3	3	3	3	4	4	4	4	5	5	5	5	6	6	6	6	7	7	7	7	8			
Boom head 7.0 m	1	1	1	1	1	1	1	1	1	1	1	1	1	1	1	1	1	1	1	1	1	1	1			
Boom length in (m)	43.4	46.4	49.1	52.1	55.1	58.1	60.8	63.8	66.8	69.8	72.5	75.5	78.5	81.5	84.2	87.2	90.2	93.2	95.9	98.9	101.9	104.9	107.6	110.6	113.6	116.6

Lift chart for main boom (No. 2220.xx)

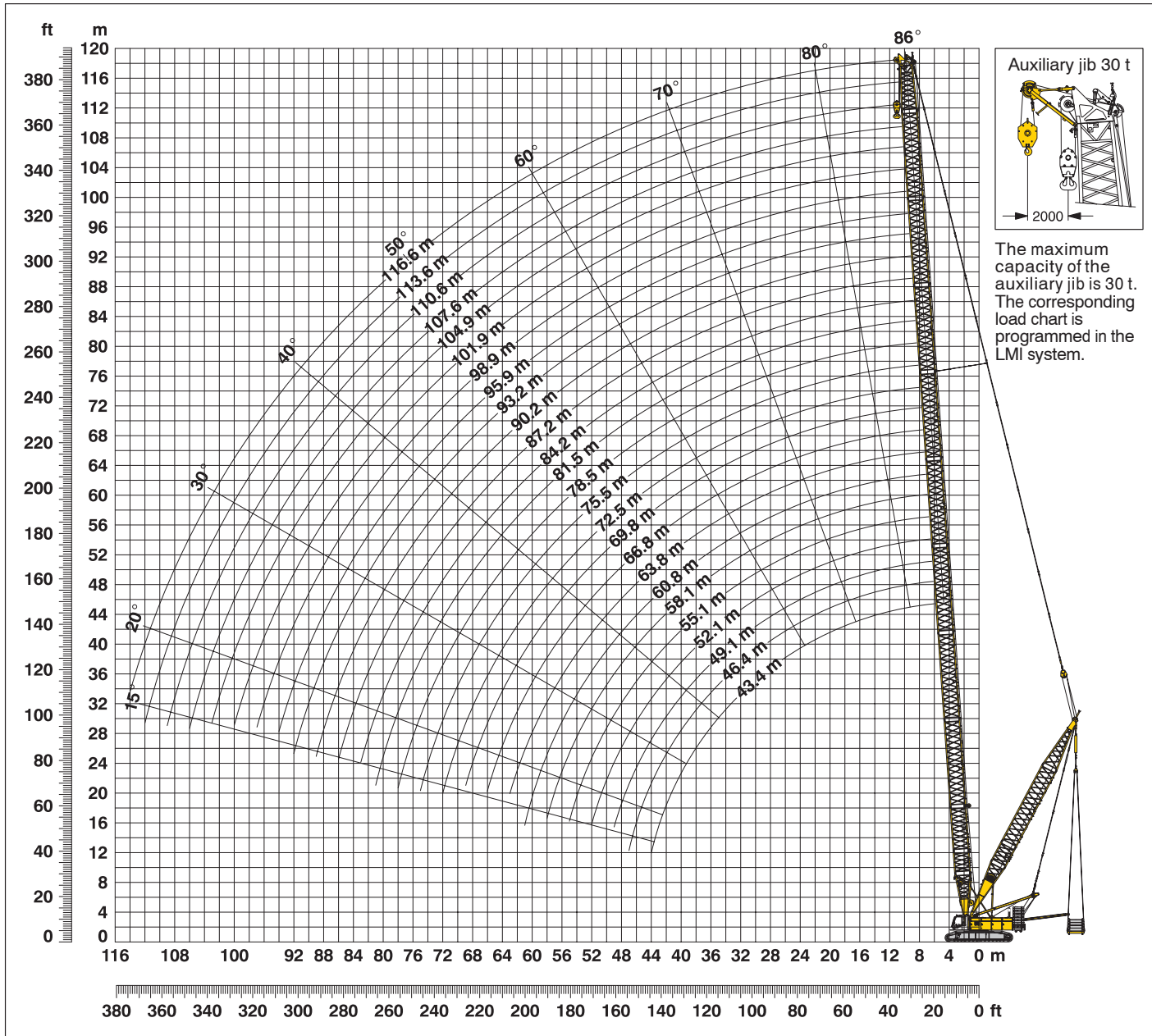
Capacities in metric tons for boom lengths (43.4 m – 116.6 m) – with 150 kN winches
85.5 t counterweight and 36.0 t carbody counterweight

Radius (m)	Boom length in (m)											Radius (m)	
	43.4	52.1	63.8	72.5	78.5	84.2	90.2	95.9	98.9	104.9	110.6		116.6
5.9	193.7												5.9
6	190.0												6
7	152.6	152.7											7
8	127.0	127.0	107.9	84.1									8
9	108.2	108.1	106.6	83.6	72.1	58.5							9
10	94.1	93.9	93.3	82.2	71.4	58.4	50.2	38.8	36.1				10
12	74.2	74.1	73.4	72.8	70.1	58.3	48.7	38.2	35.6	30.8	25.7	21.8	12
14	60.2	59.9	59.7	59.2	58.7	56.8	47.4	37.3	34.7	29.9	25.0	21.3	14
16	50.6	50.2	49.5	48.8	48.3	47.9	46.2	36.5	33.9	29.2	24.3	20.7	16
18	47.8	43.1	42.3	41.7	41.1	40.7	40.2	35.8	33.3	28.8	23.7	20.2	18
20	41.7	37.0	36.2	35.6	35.0	34.6	34.0	33.6	32.7	28.5	23.2	19.7	20
22	36.4	36.0	31.4	30.7	30.2	30.1	29.8	29.3	29.0	28.2	22.7	19.3	22
24	32.0	31.7	27.9	27.3	26.7	26.2	25.7	25.2	24.9	24.3	22.3	18.9	24
26	28.8	28.5	27.8	23.9	23.3	22.9	22.3	21.8	21.5	20.9	20.4	18.7	26
28	25.7	25.4	24.7	24.1	20.5	20.0	19.4	18.9	18.6	18.0	17.6	17.0	28
30	23.0	22.7	22.0	21.4	20.8	17.6	17.0	16.5	16.2	15.6	15.1	15.1	30
32	20.7	20.3	19.6	19.0	18.5	18.1	15.1	15.1	14.9	14.2	13.7	13.1	32
34	18.6	18.3	17.6	17.0	16.5	16.1	15.5	13.2	12.9	12.3	11.8	11.2	34
36	16.8	16.5	15.8	15.2	15.1	14.9	14.4	13.9	11.2	10.6	10.1	9.4	36
38	15.2	15.1	14.8	14.2	13.7	13.2	12.7	12.2	11.9	9.0	8.5	7.9	38
40	14.2	13.9	13.3	12.7	12.2	11.7	11.2	10.7	10.4	9.8	7.2	6.6	40
42	12.8	12.6	11.9	11.3	10.8	10.4	9.8	9.4	9.1	8.5	8.0	5.4	42
44	11.4	11.3	10.7	10.1	9.6	9.2	8.6	8.2	7.9	7.3	6.8	6.2	44
46		10.2	9.6	9.0	8.5	8.1	7.5	7.1	6.8	6.2	5.7	5.1	46
50		8.2	7.7	7.1	6.6	6.2	5.6	5.2	4.9	4.3	3.8	3.2	50
55			5.6	5.1	4.6	4.2	3.7	3.2	2.9	2.3			55
60			3.9	3.4	3.0	2.6	2.0						60
65				2.0									65

Above lift chart is for reference only. For actual lift duty please refer to lift chart in operator's cab or manual.

Working range - main boom (No. 2220.xx) **86° - 15°**

85.5 t counterweight, 36 t carbody counterweight and max. 120 t suspended counterweight at 13 m radius



Main boom configuration (Table 1 - No. 2220.xx)

Configuration for boom lengths (43.4 m - 116.6 m)

Length	Amount of boom extensions																									
Boom foot	7.0 m	1	1	1	1	1	1	1	1	1	1	1	1	1	1	1	1	1	1	1	1	1	1			
Boom insert	3.0 m	1		1		1		1		1		1		1		1		1		1		1				
Boom insert	6.0 m	1	1		1	1		1	1		1	1		1	1		1	1		1	1		1			
Boom insert	11.7 m	2	2	3	3	3	3	4	4	4	4	5	5	5	5	6	6	6	6	7	7	7	8			
Boom head	7.0 m	1	1	1	1	1	1	1	1	1	1	1	1	1	1	1	1	1	1	1	1	1	1			
Boom length in (m)	43.4	46.4	49.1	52.1	55.1	58.1	60.8	63.8	66.8	69.8	72.5	75.5	78.5	81.5	84.2	87.2	90.2	93.2	95.9	98.9	101.9	104.9	107.6	110.6	113.6	116.6

Lift chart for main boom (No. 2220.xx)

85.5 t counterweight and 36 t carbody counterweight

Main boom 43.4 m

Radius (m)	Suspended counterweight at 13 m radius				
	0	50	75	90	120
5.9	193.7	200.3			
6	190.0	200.3			
7	152.6	199.4			
8	127.0	197.5	197.5		
9	108.2	191.8	194.5	194.7	
10	94.1	167.7	191.3	191.3	
12	74.2	133.2	162.9	180.8	182.9
14	60.2	110.1	134.9	149.8	176.1
16	50.6	93.4	114.9	127.6	153.2
18	47.8	85.6	104.1	115.5	137.9
20	41.7	74.9	91.6	101.8	121.7
22	36.4	66.6	81.6	90.6	108.7
24	32.0	59.7	73.5	81.6	98.1
26	28.8	53.9	66.4	74.1	89.0
28	25.7	48.9	60.5	67.5	81.5
30	23.0	44.8	55.5	61.9	74.5
32	20.7	41.0	51.1	57.2	68.1
34	18.6	37.7	47.1	52.9	62.3
36	16.8	34.8	43.9	49.1	57.3
38	15.2	32.2	40.7	45.7	52.6
40	14.2	30.0	37.9	42.8	48.2
42	12.8	27.9	35.4	39.3	44.1

Main boom 52.1 m

Radius (m)	Suspended counterweight at 13 m radius				
	0	50	75	90	120
7	152.7	153.0			
8	127.0	151.6			
9	108.1	150.2			
10	93.9	147.5	147.5		
12	74.1	132.9	141.2	141.2	
14	59.9	109.8	134.5	137.1	
16	50.2	93.0	114.5	127.2	131.8
18	43.1	80.4	99.2	110.4	126.7
20	37.0	70.6	87.3	97.2	117.1
22	36.0	66.2	81.3	90.2	108.4
24	31.7	59.5	73.1	81.2	97.7
26	28.5	53.5	66.1	73.8	88.6
28	25.4	48.5	60.1	67.2	81.1
30	22.7	44.5	55.2	61.6	74.5
32	20.3	40.7	50.7	56.9	69.0
34	18.3	37.4	46.8	52.6	63.9
36	16.5	34.5	43.6	48.8	59.6
38	15.1	31.9	40.5	45.4	55.6
40	13.9	29.8	37.7	42.5	52.1
42	12.6	27.7	35.2	39.8	48.3
44	11.3	25.7	32.9	37.3	44.9
46	10.2	24.0	30.8	35.0	41.6
48	9.2	22.3	29.1	32.9	38.5
50	8.2	20.8	27.3	31.0	35.6

Main boom 63.8 m

Radius (m)	Suspended counterweight at 13 m radius				
	0	50	75	90	120
8	107.9				
9	106.6	106.6			
10	93.3	105.5			
12	73.4	100.5			
14	59.7	97.9	97.9		
16	49.5	92.2	94.8	94.8	
18	42.3	79.6	90.8	90.8	
20	36.2	69.8	85.6	85.6	
22	31.4	61.6	76.7	84.8	85.2
24	27.9	55.2	68.9	77.0	82.9
26	27.8	52.8	65.4	73.1	81.3
28	24.7	47.8	59.7	66.5	79.8
30	22.0	43.8	54.5	60.9	74.0
32	19.6	40.0	50.0	56.2	68.2
34	17.6	36.7	46.1	51.9	63.2
36	15.8	33.8	42.9	48.1	58.9
38	14.8	31.2	39.8	45.0	55.0
40	13.3	29.2	37.0	41.9	51.4
42	11.9	27.1	34.5	39.1	48.2
44	10.7	25.1	32.3	36.7	45.3
46	9.6	23.4	30.2	34.4	42.8
50	7.7	20.3	26.8	30.4	38.1
55	5.6	17.1	22.9	26.4	33.0
60	3.9	14.7	19.7	22.9	27.8

Main boom 72.5 m

Radius (m)	Suspended counterweight at 13 m radius				
	0	50	75	90	120
8	83.3				
10	81.7				
12	72.8	79.7			
14	59.2	76.8			
16	48.8	74.6	74.6		
18	41.7	71.6	71.6		
20	35.6	68.9	68.9	68.9	
22	30.7	61.0	66.7	66.7	
24	27.3	54.6	65.0	65.0	
26	23.9	49.0	61.5	63.7	
28	24.1	47.2	59.1	62.6	
30	21.4	43.2	53.9	60.3	61.6
32	19.0	39.4	49.4	55.6	60.7
34	17.0	36.1	45.5	51.3	59.9
36	15.2	33.2	42.3	47.5	58.4
38	14.2	30.6	39.2	44.4	54.4
40	12.7	28.6	36.4	41.3	50.8
44	10.1	24.6	31.7	36.1	44.9
46	9.0	22.8	29.9	33.8	42.2
50	7.1	19.8	26.2	30.1	37.6
55	5.1	16.6	22.4	25.9	32.7
60	3.4	14.2	19.3	22.5	28.8
65	2.0	11.9	16.6	19.5	25.2
70		9.9	14.5	17.0	21.1

Lift chart for main boom (No. 2220.xx)

85.5 t counterweight and 36 t carbody counterweight

Main boom 78.5 m

Radius (m)	Suspended counterweight at 13 m radius				
	0	50	75	90	120
	t	t	t	t	t
10	70.5				
12	69.4	69.4			
14	58.7	66.8			
16	48.3	64.6			
18	41.1	62.7	63.3		
20	35.0	60.3	60.3		
22	30.2	56.4	56.4		
24	26.7	54.0	55.3	55.3	
26	23.3	48.4	54.4	54.4	
28	20.5	44.0	53.3	53.3	
30	20.8	42.7	52.2	52.2	
32	18.5	38.9	48.9	51.3	
34	16.5	35.6	45.0	50.5	50.5
36	15.1	32.7	41.8	47.0	49.8
38	13.7	30.1	38.7	43.9	49.2
40	12.2	28.1	35.9	40.8	48.9
44	9.6	24.1	31.2	35.6	44.4
46	8.5	22.3	29.4	33.3	41.7
50	6.6	19.3	25.7	29.6	37.1
55	4.6	16.1	21.9	25.4	32.2
60	3.0	13.8	18.8	22.0	28.4
65		11.5	16.1	19.1	24.9
70		9.5	14.1	16.6	22.0
75		7.8	12.0	14.6	18.6

Main boom 82.2 m

Radius (m)	Suspended counterweight at 13 m radius				
	0	50	75	90	120
	t	t	t	t	t
10	57.1				
12	57.4				
14	56.0	56.0			
16	47.9	54.0			
18	40.7	52.6			
20	34.6	50.9			
22	30.1	49.1	49.1		
24	26.2	47.7	47.7		
26	22.9	46.4	46.4	47.1	
28	20.0	43.6	45.4	45.4	
30	17.6	39.5	43.4	43.4	
34	16.1	35.2	41.6	41.6	
36	14.9	32.3	40.8	40.8	
38	13.2	30.0	38.3	40.1	42.1
40	11.7	27.7	35.5	39.5	39.5
44	9.2	23.6	30.8	35.2	38.9
46	8.1	21.9	29.0	32.9	38.6
50	6.2	18.9	25.3	29.2	36.7
55	4.2	15.7	21.5	25.0	31.8
60	2.6	13.4	18.4	21.6	28.0
65		11.1	15.8	18.7	24.6
70		9.1	13.7	16.2	21.6
75		7.4	11.7	14.3	19.1
80		5.9	9.9	12.3	16.3

Main boom 90.2 m

Radius (m)	Suspended counterweight at 13 m radius				
	0	50	75	90	120
	t	t	t	t	t
10	50.2				
14	47.4				
16	46.2	46.2			
18	40.2	45.2			
20	34.0	43.5			
22	29.8	43.0			
24	25.7	42.5	42.5		
26	22.3	42.2	42.2		
28	19.4	41.8	41.8	41.8	
30	17.0	38.9	41.6	41.6	
34	15.5	34.6	41.5	41.5	
36	14.4	31.7	40.8	41.5	
38	12.7	29.5	37.7	41.4	42.1
40	11.2	27.1	35.0	39.8	41.4
44	8.6	23.1	30.2	34.6	41.4
46	7.5	21.4	28.4	32.4	40.8
50	5.6	18.3	24.8	28.7	36.1
55	3.7	15.2	21.0	24.5	31.3
60	2.0	12.9	17.9	21.1	27.5
65		10.6	15.2	18.2	24.1
70		8.6	13.2	15.7	21.1
75		7.0	11.2	13.8	18.6
80		5.5	9.5	11.8	16.4
85		4.2	7.9	10.1	14.4

Main boom 95.9 m

Radius (m)	Suspended counterweight at 13 m radius				
	0	50	75	90	120
	t	t	t	t	t
10	38.7				
14	37.1				
16	36.3				
18	35.6				
20	33.6	35.1			
24	25.2	34.7			
26	21.8	34.7			
28	18.9	34.7	34.7		
30	16.5	34.7	34.7		
32	15.1	34.6	34.6	34.6	
34	13.2	31.7	34.6	34.6	
36	13.9	31.3	34.6	34.6	
38	12.2	29.0	34.6	34.6	
40	10.7	26.7	34.5	34.6	
44	8.2	22.6	30.0	34.2	34.5
50	5.2	17.9	24.3	28.2	34.4
55	3.2	15.1	20.6	24.1	30.9
60		12.4	17.4	20.6	27.0
65		10.2	15.1	17.7	23.6
70		8.2	12.8	15.3	20.7
75		6.5	10.8	13.4	18.2
80		5.1	9.1	11.5	16.0
85		3.8	7.5	9.7	14.2
90		2.6	6.1	8.2	12.4

Lift chart for main boom (No. 2220.xx)

85.5 t counterweight and 36 t carbody counterweight

Main boom 98.9 m

Radius (m)	Suspended counterweight at 13 m radius				
	0	50	75	90	120
	t	t	t	t	t
10	36.1				
14	34.7				
16	33.9				
20	32.7	32.7			
24	24.9	32.1			
26	21.5	32.1			
28	18.6	32.1	32.1		
30	16.2	32.1	32.1		
34	12.9	31.4	32.0	32.0	
36	11.2	29.0	32.0	32.0	
38	11.9	28.7	32.0	32.0	
40	10.4	26.4	32.0	32.0	
44	7.9	22.3	29.7	32.0	
46	6.8	20.6	27.7	31.6	31.9
50	4.9	17.6	24.0	27.9	31.9
55	2.9	14.8	20.3	23.8	30.6
60		12.1	17.2	20.3	26.7
65		9.9	14.9	17.5	23.3
70		7.9	12.5	15.1	20.4
75		6.3	10.5	13.1	17.9
80		4.8	8.8	11.2	15.7
85		3.5	7.2	9.5	14.0
90		2.3	5.9	8.0	12.2
95			4.6	6.6	10.3

Main boom 104.9 m

Radius (m)	Suspended counterweight at 13 m radius				
	0	50	75	90	120
	t	t	t	t	t
12	30.8				
16	29.2				
20	28.5				
22	28.2	28.2			
24	24.3	28.0			
26	20.9	27.9			
28	18.0	27.8			
30	15.6	27.7	27.7		
34	12.3	27.6	27.6		
36	10.6	27.5	27.5	27.5	
40	9.8	25.8	27.5	27.5	
44	7.3	21.8	27.5	27.5	
48	5.2	18.4	25.2	27.4	27.4
50	4.3	17.0	23.5	27.3	27.4
55	2.3	14.3	19.7	23.2	27.3
60		11.6	16.6	19.8	26.2
65		9.3	14.3	16.9	22.8
70		7.4	12.0	14.7	19.9
75		5.7	10.0	12.6	17.4
80		4.2	8.2	10.6	15.2
85		3.0	6.7	9.0	13.4
90			5.3	7.5	11.7
95			4.1	6.1	10.1
100			3.0	4.9	8.6

Main boom 110.6 m

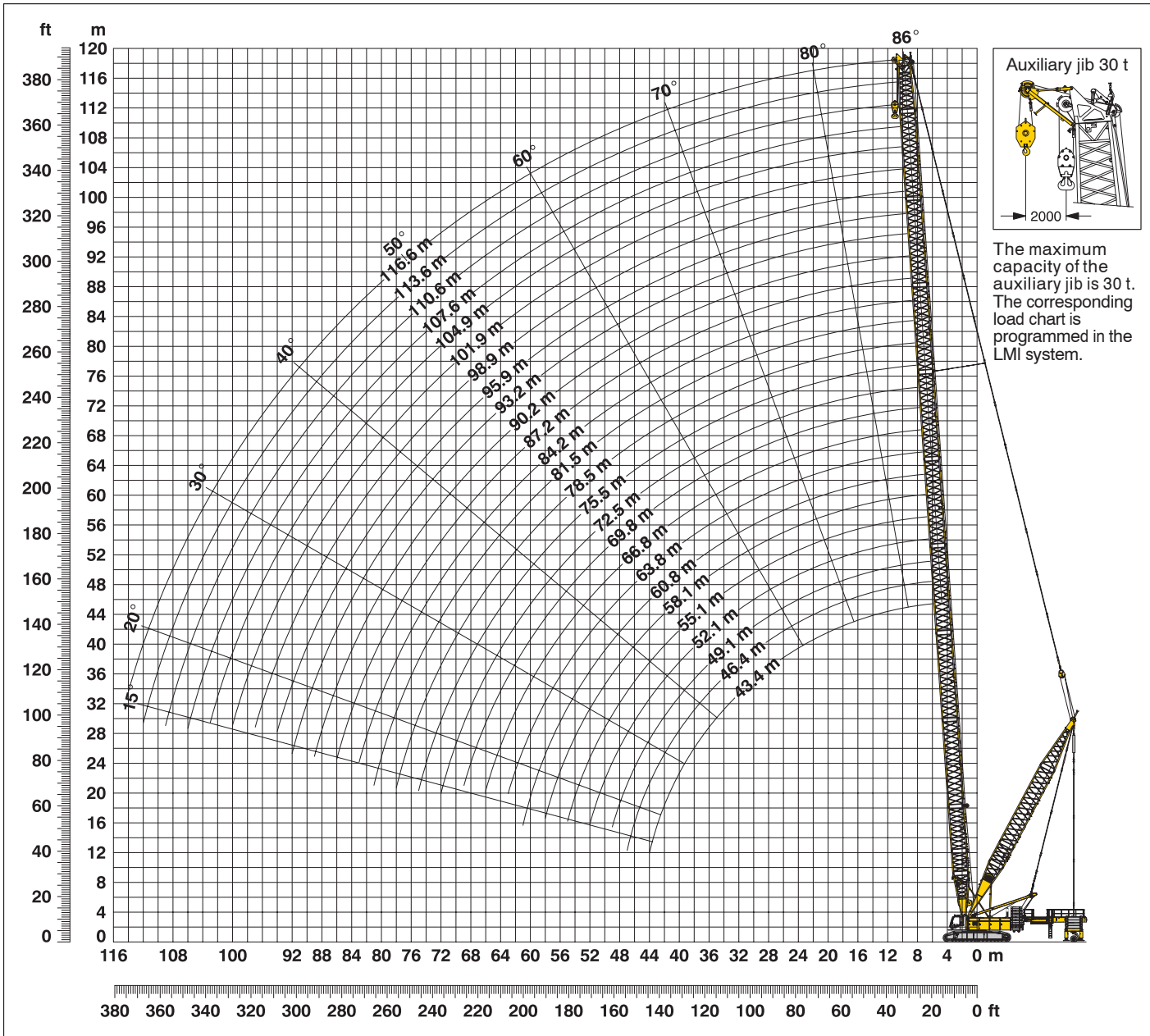
Radius (m)	Suspended counterweight at 13 m radius				
	0	50	75	90	120
	t	t	t	t	t
12	25.5				
16	24.1				
20	23.1				
22	22.6				
24	22.3	22.3			
26	20.4	22.2			
30	15.1	22.1			
32	13.7	22.1			
34	11.8	22.1	22.1		
36	10.1	22.1	22.1		
40	7.2	22.1	22.1	22.1	
42	8.0	22.0	22.0	22.0	
44	6.8	21.3	22.0	22.0	
46	5.7	19.6	22.0	22.0	
50	3.8	16.5	22.0	22.0	
55		13.8	19.2	21.9	21.9
60		11.1	16.1	19.3	21.9
70		6.9	11.5	14.3	19.4
80		3.8	7.8	10.2	14.8
85		2.5	6.3	8.5	12.8
90			4.9	7.0	11.2
95			3.7	5.7	9.7
100			2.6	4.5	8.3
105				3.4	6.9

Main boom 116.6m

Radius (m)	Suspended counterweight at 13 m radius				
	0	50	75	90	120
	t	t	t	t	t
12	21.8				
16	20.7				
20	19.7				
24	18.9				
26	18.7	18.7			
30	15.1	18.6			
32	13.1	18.6			
34	11.2	18.6			
36	9.4	18.6	18.6		
38	7.9	18.6	18.6		
40	6.6	18.6	18.6		
42	5.4	18.6	18.6	18.6	
44	6.2	18.5	18.5	18.5	
46	5.1	18.5	18.5	18.5	
48	4.1	17.4	18.5	18.5	
50	3.2	15.9	18.5	18.5	
60		10.5	15.5	18.4	18.4
70		6.3	10.9	13.7	18.2
80		3.2	7.2	9.6	11.7
90			4.3	6.5	7.9
95			3.1	5.1	6.6
100			2.0	3.9	5.4
105				2.8	4.5
110					3.8

Working range - main boom (No. 2220.xx) **86° - 15°**

85.5 t counterweight, 36 t carbody counterweight and 120 t wheeled counterweight carriage from 11.4 m - 15 m radius



Main boom configuration (Table 1 - No. 2220.xx)

Configuration for boom lengths (43.4 m - 116.6 m)

	Length	Amount of boom extensions																									
Boom foot	7.0 m	1	1	1	1	1	1	1	1	1	1	1	1	1	1	1	1	1	1	1	1	1	1	1			
Boom insert	3.0 m		1		1		1		1		1		1		1		1		1		1		1				
Boom insert	6.0 m	1	1		1	1		1	1		1	1		1	1		1	1		1	1		1	1			
Boom insert	11.7 m	2	2	3	3	3	3	4	4	4	4	5	5	5	5	6	6	6	6	7	7	7	7	8			
Boom head	7.0 m	1	1	1	1	1	1	1	1	1	1	1	1	1	1	1	1	1	1	1	1	1	1	1			
Boom length in (m)		43.4	46.4	49.1	52.1	55.1	58.1	60.8	63.8	66.8	69.8	72.5	75.5	78.5	81.5	84.2	87.2	90.2	93.2	95.9	98.9	101.9	104.9	107.6	110.6	113.6	116.6

Lift chart for main boom (No. 2220.xx)

Wheeled counterweight carriage at 15 m radius

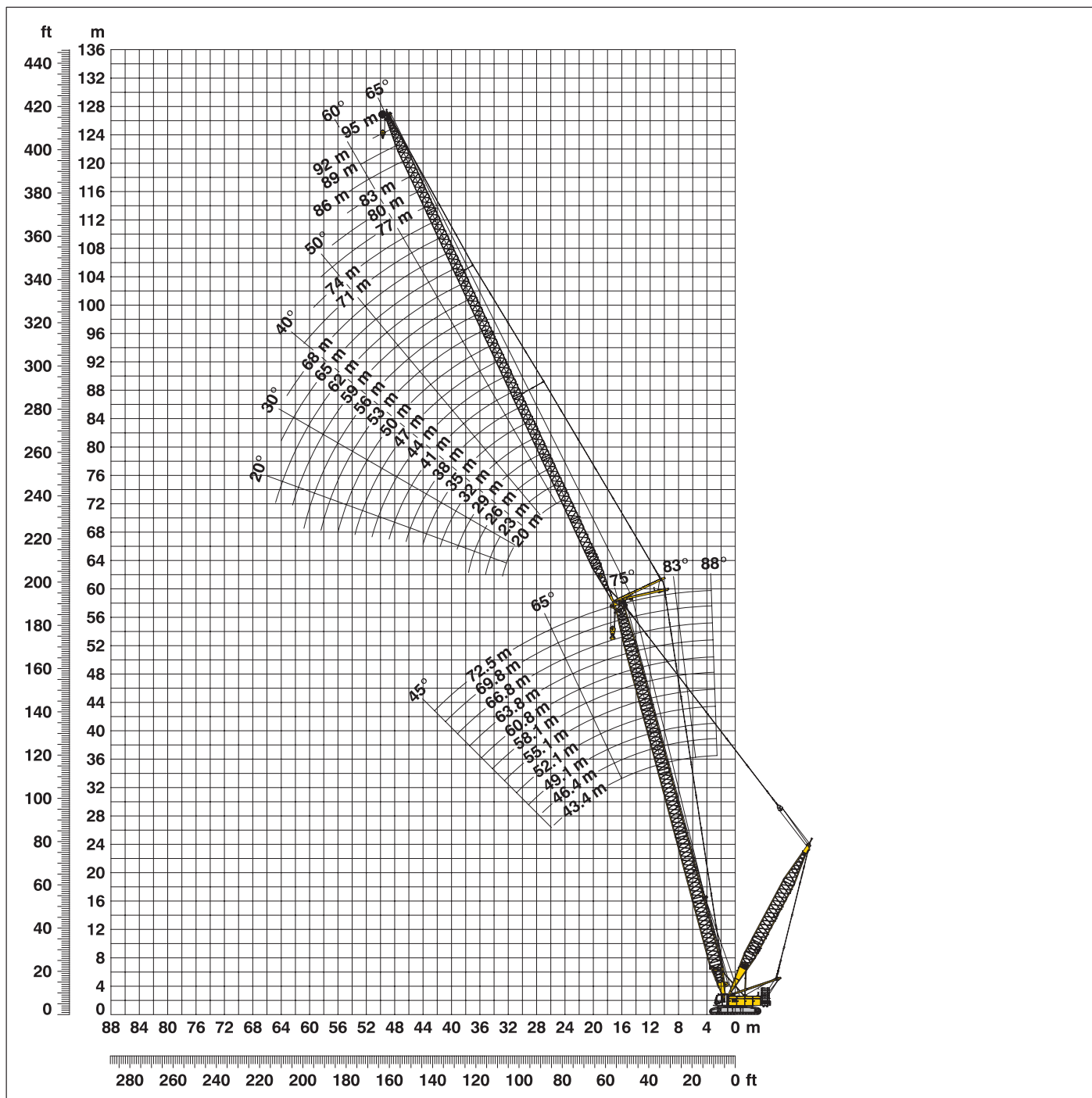
Capacities in metric tons for boom lengths (43.4 m – 116.6 m) – with 150 kN winches
85.5 t counterweight, 36.0 t carbody counterweight and 120 t wheeled counterweight carriage

Radius	Boom length in (m)												Radius
	43.4	52.1	63.8	72.5	78.5	84.2	90.2	95.9	98.9	104.9	110.6	116.6	
(m)	t	t	t	t	t	t	t	t	t	t	t	t	(m)
5.9	200.3												5.9
6	200.3												6
7	199.4	153.0											7
8	197.5	151.6	107.9	83.3									8
9	194.5	150.2	106.6	82.9	71.2	57.1							9
10	191.3	147.5	105.5	81.7	70.5	57.1	50.2	38.7	36.1				10
12	182.9	141.2	100.5	79.7	69.4	57.4	48.7	38.0	35.6	30.8	25.5	21.8	12
14	176.1	137.1	97.9	76.8	66.8	56.0	47.4	37.1	34.7	29.5	24.8	21.3	14
16	166.6	131.8	94.8	74.6	64.6	54.0	46.2	36.3	33.9	29.2	24.1	20.7	16
18	149.7	126.7	90.8	71.6	62.7	52.6	45.2	35.6	33.3	28.8	23.6	20.2	18
20	132.2	122.8	85.6	68.9	60.3	50.9	43.5	35.1	32.7	28.5	23.1	19.7	20
22	118.1	117.7	84.8	66.7	56.4	49.1	43.0	34.7	32.2	28.2	22.6	19.3	22
24	106.6	106.2	82.9	65.0	55.3	47.7	42.5	34.7	32.1	28.0	22.3	18.9	24
26	97.0	96.6	81.3	63.7	54.4	46.4	42.2	34.7	32.1	27.9	22.2	18.7	26
28	88.7	88.5	79.8	62.6	53.3	45.4	41.8	34.7	32.1	27.8	22.2	18.7	28
30	81.7	81.4	78.6	61.6	52.2	43.4	41.6	34.7	32.1	27.7	22.1	18.6	30
32	75.5	75.2	74.5	60.7	51.3	42.4	41.5	34.6	32.1	27.6	22.1	18.6	32
34	70.0	69.9	69.2	59.9	50.5	41.6	41.5	34.6	32.0	27.6	22.1	18.6	34
36	64.3	65.1	64.4	58.9	49.8	40.8	41.5	34.6	32.0	27.5	22.1	18.6	36
38	59.2	60.8	60.1	58.8	49.2	40.1	41.4	34.6	32.0	27.5	22.1	18.6	38
40	54.4	57.1	56.5	55.9	48.9	39.5	41.4	34.6	32.0	27.5	22.1	18.6	40
42	49.8	53.7	53.0	52.4	48.7	39.2	41.4	34.5	32.0	27.5	22.0	18.6	42
44	15.1	50.5	49.9	49.3	48.5	38.9	41.4	34.5	32.0	27.5	22.0	18.5	44
46		47.1	47.0	46.5	46.0	38.6	41.4	34.5	31.9	27.4	22.0	18.5	46
48		43.8	44.6	44.0	43.5	38.4	41.3	34.5	31.9	27.4	22.0	18.5	48
50		40.5	42.1	41.6	41.1	38.1	40.2	34.4	31.9	27.4	22.0	18.5	50
55			36.9	36.4	35.9	35.5	35.0	34.4	31.8	27.3	21.9	18.4	55
60			31.9	32.0	31.6	31.2	30.6	30.2	30.1	27.3	21.9	18.4	60
65				28.4	28.0	27.6	27.1	26.7	26.4	25.9	21.8	18.3	65
70				24.6	24.8	24.5	24.0	23.6	23.3	22.7	21.3	18.2	70
75					21.9	21.7	21.3	20.8	20.6	20.0	19.4	17.1	75
80						19.3	18.9	18.5	18.2	17.7	17.2	11.7	80
85							16.7	16.4	16.1	15.6	12.8	9.8	85
90								14.6	14.4	12.8	11.2	7.9	90
95									12.7	11.7	9.8	6.6	95
100										10.6	8.6	5.4	100
105											7.8	4.5	105
110												3.8	110

Above lift chart is for reference only. For actual lift duty please refer to lift chart in operator's cab or manual.

Working range - luffing jib (No. 1916.xx) **78° - 15°**

Main boom **88° - 45°**



Boom configuration for main boom lengths (43.4 m - 72.5 m) – see table 1 on page 10
Jib configuration for jib lengths (20 m - 95 m)

	Length	Amount of luffing jib extensions																										
Luffing jib foot	7.0 m	1	1	1	1	1	1	1	1	1	1	1	1	1	1	1	1	1	1	1	1	1	1	1	1	1		
Luffing jib insert	3.0 m			1	1	1			1			1			1			1			1			1				
Luffing jib insert	6.0 m	1	1				1	1			1	1			1	1			1	1			1	1				
Luffing jib insert	12.0 m			1	1	1	1	1	2	2	2	2	3	3	3	3	4	4	4	4	5	5	5	5	6	6	6	6
Luffing jib head	7.0 m	1	1	1	1	1	1	1	1	1	1	1	1	1	1	1	1	1	1	1	1	1	1	1	1	1	1	
Luffing jib length (m)		20	23	26	29	32	35	38	41	44	47	50	53	56	59	62	65	68	71	74	77	80	83	86	89	92	95	

Lift chart – luffing jib (No. 1916.xx)

Main boom angle 88°

Main boom 43.4 m

Radius (m)	Jib length in (m)							
	20	29	41	53	62	71	83	95
8.8	t							
11	66.2	t						
12	64.0	49.3						
14	62.0	48.8						
16	56.0	46.3	32.3					
18	50.2	42.5	30.5	20.7				
20	43.3	39.5	27.9	20.0	16.0			
22	38.1	35.9	26.2	19.1	15.5	10.9		
26	33.7	32.0	24.7	18.3	14.2	10.5	8.2	
32		26.3	22.1	17.2	13.3	9.8	6.9	4.7
40		20.7	19.0	15.7	12.4	9.2	6.4	4.3
44			15.3	13.7	11.4	8.5	5.9	3.9
48			13.5	12.9	11.0	8.2	5.6	3.7
55				12.0	10.4	7.9	5.4	3.5
60				9.7	9.2	7.3	4.9	3.1
70					8.5	6.8	4.6	2.8
75						5.8	4.1	2.3
							3.8	2.1

Main boom 49.1 m

Radius (m)	Jib length in (m)							
	20	29	41	53	62	71	83	95
9	t							
11	57.3	t						
14	57.2	43.9						
16	51.9	42.3	30.3					
18	46.4	40.2	28.1	19.6				
20	40.6	37.4	26.5	19.0	15.2			
24	35.9	34.0	25.0	18.2	14.0	10.3		
26	15.1	26.8	22.3	16.8	13.1	9.7	6.8	
30		24.7	21.3	16.4	12.7	9.4	6.6	4.5
32		21.1	19.1	15.6	12.1	9.0	6.3	4.3
40		19.8	18.1	14.4	11.9	8.8	6.2	4.1
44			14.6	12.9	11.0	8.2	5.7	3.7
48			12.4	12.0	10.5	8.0	5.4	3.6
55				11.0	9.9	7.7	5.2	3.4
60				9.6	8.5	7.1	4.8	3.0
70					7.5	6.5	4.5	2.7
80						5.4	4.0	2.2
							3.3	

Main boom 55.1 m

Radius (m)	Jib length in (m)							
	20	29	41	53	62	71	83	95
9.2	t							
12	52.2	t						
14	52.0	40.2						
17	48.5	39.3	27.9					
18	40.2	36.4	26.1	18.5				
20	38.2	35.0	25.4	18.2	14.5			
24	34.1	32.0	24.1	17.5	13.4	10.9		
26	26.5	25.5	21.6	16.2	12.6	9.3	6.6	
32		23.6	20.5	15.8	12.2	9.1	6.4	4.3
40		19.1	17.3	14.0	11.4	8.5	6.0	4.0
44			14.6	12.7	10.7	8.0	5.5	3.6
48			13.0	11.6	10.3	7.7	5.3	3.4
55				10.4	9.6	7.5	5.1	3.3
60				8.5	8.0	6.7	4.7	2.9
70					7.2	6.0	4.4	2.7
85						4.6	3.8	2.2
							2.7	

Main boom 60.8 m

Radius (m)	Jib length in (m)							
	20	29	41	53	62	71	83	95
9.4	t							
12	46.6	t						
14	46.2	35.8						
17	43.3	35.0	25.3					
18	37.1	32.6	24.1	17.3				
19	33.0	30.3	23.0	16.7	12.7			
20	31.2	27.7	22.5	16.4	12.5	10.3		
24	25.5	23.2	20.3	15.3	11.7	8.7	6.2	
26		21.7	19.3	14.3	11.4	8.5	6.1	4.1
32		17.7	16.0	13.3	10.7	8.0	5.7	3.8
36			14.0	12.5	10.2	7.8	5.5	3.6
44			12.0	10.7	8.8	7.3	5.0	3.3
48				9.6	8.3	7.1	4.8	3.1
55				7.6	7.3	6.4	4.5	2.8
65					4.5	5.0	3.9	2.3
70						4.5	3.5	2.1
85							2.3	

Main boom 66.8 m

Radius (m)	Jib length in (m)							
	20	29	41	53	62	71	83	95
9.7	t							
12	42.1	t						
14	41.3	32.6						
17	39.8	31.8	23.4					
19	35.1	28.9	22.4	16.3				
22	31.5	27.4	21.5	15.8	11.9			
24	26.5	24.2	20.1	14.4	11.4	8.6		
26	24.2	21.9	19.1	13.8	11.1	8.4	5.9	
32		20.5	18.1	13.3	10.8	8.2	5.8	3.8
36		17.1	15.1	12.0	10.4	7.8	5.5	3.6
44			13.9	11.3	10.1	7.5	5.2	3.4
48			11.2	9.7	8.6	7.0	4.8	3.1
55				8.6	7.9	6.7	4.6	3.0
65				7.0	6.5	5.9	4.3	2.7
70					5.2	4.6	3.6	2.2
85						4.2	3.2	
							2.0	

Main boom 72.5 m

Radius (m)	Jib length in (m)							
	20	29	41	53	62	71	83	95
9.9	t							
12	36.1	t						
15	35.6	28.4						
17	33.6	26.9	20.6					
19	30.9	25.7	20.0	14.1				
22	27.5	24.8	19.1	13.7	10.8			
24	24.0	22.1	17.9	13.1	10.4	8.0		
26	22.2	20.1	17.0	12.8	10.2	7.8	5.5	
32		19.0	16.2	12.4	10.0	7.6	5.4	3.5
36		15.8	13.8	11.0	9.5	7.3	5.1	3.3
44			12.7	10.1	9.1	7.0	4.9	3.2
48			10.7	8.3	7.6	6.3	4.5	2.9
55				7.5	7.0	6.0	4.3	2.7
65				6.2	5.8	5.2	4.0	2.5
70					4.8	4.0	3.2	2.0
80						3.5	2.8	
							2.0	

Capacities in metric tons with luffing jib (No. 1916.xx) 85.5 t counterweight + 36 t carbody counterweight. Above lift chart is for reference only. For actual lift duty and complete chart with all available configurations please refer to lift chart in operator's cab or manual.

Lift chart - luffing jib (No. 1916.xx)

Main boom angle 83°

Main boom 43.4 m

Radius (m)	Jib length in (m)							
	20	29	41	53	62	71	83	95
14.3	60.6	t	t	t	t	t	t	t
17	49.7	45.7	t	t	t	t	t	t
22	36.8	36.4	27.0	t	t	t	t	t
24	33.1	32.8	25.6	18.3	t	t	t	t
26	30.1	30.1	24.5	18.0	t	t	t	t
28	t	27.6	23.4	17.6	13.6	t	t	t
30	t	25.4	22.5	17.2	13.3	9.7	t	t
34	t	21.7	20.6	16.5	12.8	9.3	6.5	t
36	t	20.1	19.7	16.1	12.5	9.2	6.4	t
38	t	t	18.4	15.8	12.3	9.0	6.2	4.1
48	t	t	13.9	13.4	11.2	8.3	5.6	3.7
55	t	t	t	11.0	10.6	7.8	5.2	3.3
65	t	t	t	t	8.2	7.3	4.7	2.8
75	t	t	t	t	t	5.9	4.1	2.3
80	t	t	t	t	t	t	3.9	2.1
85	t	t	t	t	t	t	3.7	t
90	t	t	t	t	t	t	t	t

Main boom 49.1 m

Radius (m)	Jib length in (m)							
	20	29	41	53	62	71	83	95
15	56.1	t	t	t	t	t	t	t
18	45.8	41.4	t	t	t	t	t	t
22	36.3	35.9	26.1	t	t	t	t	t
26	30.1	29.8	23.8	17.3	t	t	t	t
28	27.4	27.2	22.8	17.0	13.0	t	t	t
30	t	25.0	22.0	16.6	12.7	10.3	t	t
34	t	21.4	20.3	16.0	12.3	9.0	6.2	t
36	t	19.9	19.4	15.6	12.1	8.9	6.2	t
38	t	t	18.1	15.3	11.9	8.7	6.0	4.0
46	t	t	14.4	13.6	11.1	8.2	5.6	3.6
48	t	t	13.7	13.2	10.9	8.1	5.5	3.6
55	t	t	t	10.8	10.4	7.7	5.1	3.3
60	t	t	t	9.5	9.1	7.5	4.8	3.0
65	t	t	t	t	8.0	7.2	4.6	2.7
75	t	t	t	t	t	5.8	4.1	2.3
80	t	t	t	t	t	t	3.8	2.0
85	t	t	t	t	t	t	3.6	t

Main boom 55.1 m

Radius (m)	Jib length in (m)							
	20	29	41	53	62	71	83	95
15.8	50.0	t	t	t	t	t	t	t
19	42.7	37.9	t	t	t	t	t	t
22	35.7	35.3	24.8	t	t	t	t	t
26	29.7	29.3	23.1	16.7	t	t	t	t
28	27.0	26.7	22.3	16.4	13.3	t	t	t
32	t	22.7	20.8	15.8	12.1	8.9	t	t
36	t	19.5	19.0	15.3	11.7	8.6	6.0	t
38	t	t	17.8	14.2	11.5	8.5	5.9	3.9
42	t	t	15.6	13.7	11.2	8.2	5.7	3.7
48	t	t	13.4	12.8	10.6	7.9	5.4	3.5
55	t	t	t	10.6	10.1	7.5	5.0	3.2
60	t	t	t	9.2	8.9	7.3	4.7	3.0
65	t	t	t	t	7.8	7.0	4.5	2.7
75	t	t	t	t	t	5.6	4.0	2.2
80	t	t	t	t	t	t	3.8	2.0
90	t	t	t	t	t	t	3.2	t

Main boom 60.8 m

Radius (m)	Jib length in (m)							
	20	29	41	53	62	71	83	95
16.5	43.4	t	t	t	t	t	t	t
20	39.4	33.5	t	t	t	t	t	t
24	31.6	31.1	22.6	t	t	t	t	t
28	26.6	26.2	21.3	15.7	t	t	t	t
30	t	24.1	20.6	15.4	11.6	t	t	t
32	t	22.2	19.9	14.3	11.4	8.4	t	t
36	t	19.2	18.4	13.7	11.1	8.2	5.7	t
38	t	17.8	17.4	13.5	10.9	8.1	5.6	t
40	t	t	16.3	13.3	10.7	8.0	5.5	3.7
44	t	t	14.7	12.8	10.5	7.8	5.3	3.5
48	t	t	13.1	12.2	10.2	7.6	5.2	3.4
50	t	t	12.3	11.8	10.1	7.5	5.1	3.3
60	t	t	t	9.0	8.6	7.0	4.6	2.9
70	t	t	t	t	6.4	6.2	4.1	2.4
75	t	t	t	t	t	5.4	3.9	2.2
90	t	t	t	t	t	t	3.0	t

Main boom 66.8 m

Radius (m)	Jib length in (m)							
	20	29	41	53	62	71	83	95
17.2	38.8	t	t	t	t	t	t	t
20	38.5	30.4	t	t	t	t	t	t
24	30.9	29.2	21.3	t	t	t	t	t
28	26.0	25.6	20.3	14.1	t	t	t	t
30	23.8	23.5	19.7	13.9	11.0	t	t	t
34	t	20.1	18.5	13.4	10.7	8.0	t	t
36	t	18.7	17.9	13.1	10.5	7.9	5.4	t
38	t	17.4	16.9	12.9	10.4	7.8	5.4	t
40	t	t	15.8	12.7	10.2	7.7	5.3	3.5
44	t	t	14.4	12.4	10.0	7.5	5.1	3.4
50	t	t	12.0	11.2	9.6	7.2	4.9	3.2
55	t	t	t	10.0	9.0	7.0	4.7	3.0
60	t	t	t	8.7	8.2	6.7	4.4	2.8
70	t	t	t	t	6.3	5.9	4.0	2.3
75	t	t	t	t	t	5.1	3.7	2.1
90	t	t	t	t	t	t	2.8	t

Main boom 72.5 m

Radius (m)	Jib length in (m)							
	20	29	41	53	62	71	83	95
17.9	33.6	t	t	t	t	t	t	t
22	32.7	26.1	t	t	t	t	t	t
24	30.2	25.7	19.2	t	t	t	t	t
28	25.4	23.6	18.7	13.0	t	t	t	t
30	23.3	22.1	18.3	12.9	t	t	t	t
32	t	21.0	17.8	12.7	10.0	t	t	t
34	t	19.6	17.2	12.5	9.8	7.5	t	t
38	t	17.0	16.0	12.0	9.6	7.4	5.1	t
40	t	t	15.3	11.8	9.4	7.3	5.0	3.6
44	t	t	13.6	11.2	9.2	7.1	4.8	3.1
48	t	t	12.4	10.5	9.0	6.9	4.7	3.0
50	t	t	11.7	10.1	8.8	6.8	4.6	3.0
60	t	t	t	7.8	7.4	6.1	4.2	2.6
70	t	t	t	t	5.9	5.1	3.7	2.2
80	t	t	t	t	t	4.1	3.2	t
90	t	t	t	t	t	t	2.6	t

Capacities in metric tons with luffing jib (No. 1916.xx) 85.5 t counterweight + 36 t carbody counterweight. Above lift chart is for reference only. For actual lift duty and complete chart with all available configurations please refer to lift chart in operator's cab or manual.

Lift chart – luffing jib (No. 1916.xx)

Main boom angle 75°

Main boom 43.3 m

Radius (m)	Jib length in (m)							
	20	29	41	53	62	71	83	95
22.9	t	t	t	t	t	t	t	t
28	31.0							
32	24.7	24.2						
38	20.9	20.5	19.8					
42		16.5	15.8	15.1				
46		14.9	14.3	13.7	12.2			
48			12.7	12.0	11.5	8.6		
50			11.9	11.3	10.8	8.5		
55			11.2	10.6	10.2	8.3	5.6	
60				9.2	8.7	8.1	5.4	3.3
65				8.0	7.6	7.0	5.2	3.2
70				7.0	6.6	6.1	4.9	3.0
75					5.8	5.2	4.6	2.8
80						4.5	3.9	2.5
85						3.9	3.3	2.3
90							2.8	2.1
							2.3	

Main boom 49.1 m

Radius (m)	Jib length in (m)							
	20	29	41	53	62	71	83	95
24.4	t	t	t	t	t	t	t	t
30	28.2							
34	21.8	21.3						
40	18.6	18.2	17.5					
42		15.1	14.6	13.9				
44		14.3	13.7	13.0				
46			12.8	12.1	11.6			
48			12.1	11.4	10.9	9.2		
50			11.4	10.7	10.2	8.2		
55			10.7	10.1	9.6	8.1		
60			9.3	8.7	8.2	7.6	5.3	
65				7.6	7.1	6.5	5.1	3.1
70				6.6	6.2	5.6	4.9	2.9
75					5.4	4.8	4.2	2.7
80					4.7	4.2	3.5	2.5
85						3.6	2.9	2.3
							2.4	

Main boom 55.1 m

Radius (m)	Jib length in (m)							
	20	29	41	53	62	71	83	95
26	t	t	t	t	t	t	t	t
30	24.9							
36	20.8	20.2						
40	16.4	16.0	15.3					
42		14.5	13.8	12.6				
44		13.5	12.9	12.1				
46		12.7	12.1	11.3	10.8			
48			11.3	10.6	10.1			
50			10.7	10.0	9.5	8.0		
55			10.0	9.4	8.9	8.0		
60			8.7	8.1	7.6	7.0	5.2	
65				7.0	6.5	5.9	5.0	3.1
70				6.1	5.6	5.1	4.4	2.9
75					4.9	4.3	3.7	2.7
80					4.2	3.7	3.0	2.3
85						3.1	2.5	
						2.6		

Main boom 60.8 m

Radius (m)	Jib length in (m)							
	20	29	41	53	62	71	83	95
27.4	t	t	t	t	t	t	t	t
32	22.1							
38	18.2	17.6						
40	15.1	14.7	13.9					
42		13.7	12.9					
44		12.8	12.1	11.3				
46		12.0	11.3	10.6				
48		11.2	10.6	9.9	9.4			
50			10.0	9.3	8.7			
55			9.4	8.7	8.2	7.5		
60			8.1	7.5	7.0	6.3	4.9	
65				6.4	6.0	5.4	4.6	2.9
70				5.6	5.1	4.5	3.8	2.8
75				4.8	4.4	3.8	3.1	2.4
80					3.8	3.2	2.6	
85						2.7	2.0	
						2.2		

Main boom 66.8 m

Radius (m)	Jib length in (m)							
	20	29	41	53	62	71	83	95
29	t	t	t	t	t	t	t	t
34	19.3							
38	15.8	15.2						
44	14.1	13.6	12.4					
48		11.1	10.4	9.6				
50		9.8	9.2	8.4	7.9			
55			8.6	7.9	7.4			
60			7.4	6.7	6.2	5.6		
65			6.4	5.8	5.3	4.7	3.9	
70				5.0	4.5	3.9	3.2	2.4
75				4.3	3.8	3.3	2.5	
80					3.3	2.7		
					2.7	2.2		

Main boom 72.5 m

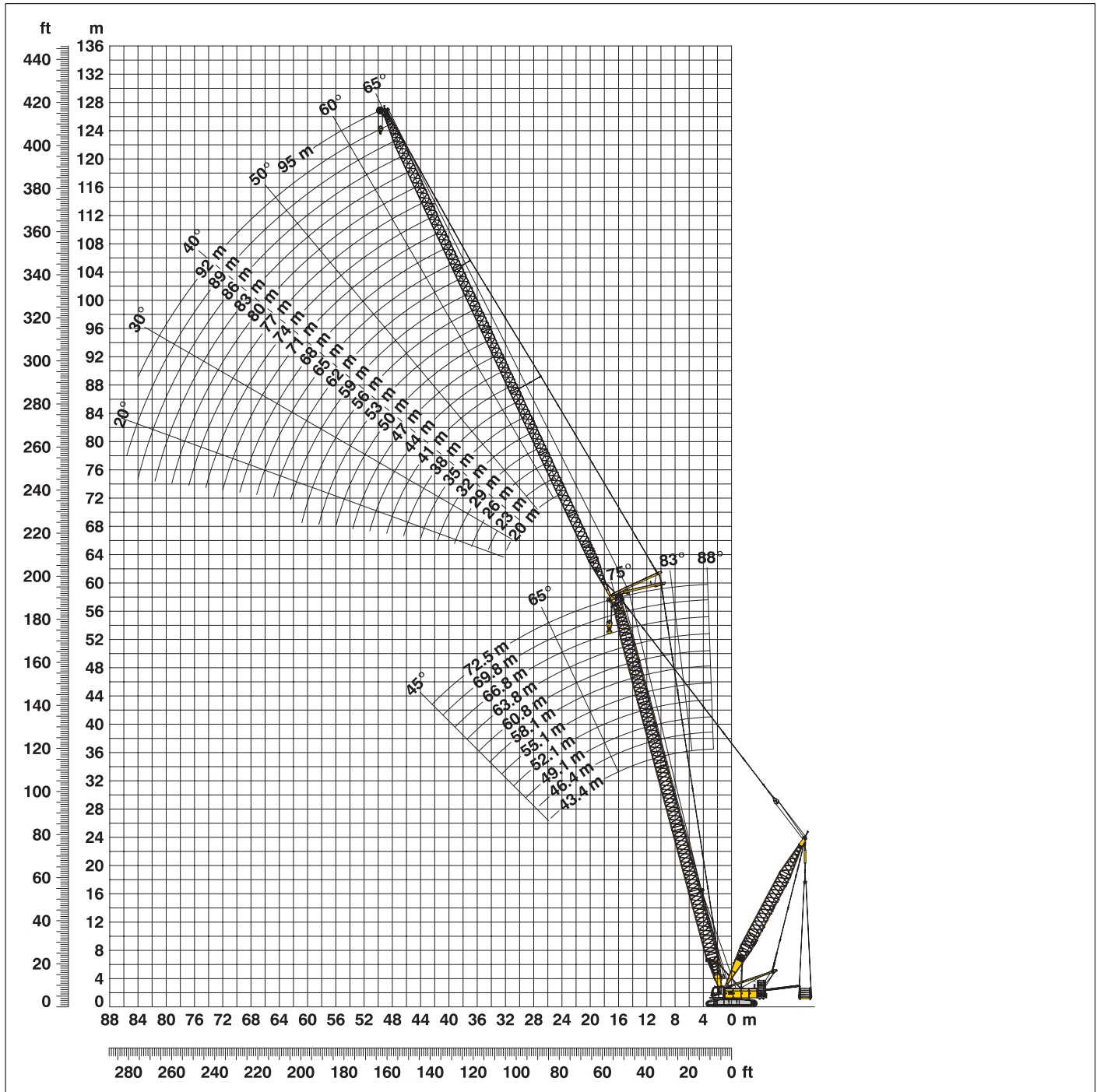
Radius (m)	Jib length in (m)							
	20	29	41	53	62	71	83	95
30.5	t	t	t	t	t	t	t	t
36	17.0							
40	14.2	13.6						
46	12.3	11.8	11.0					
48		9.7	8.9	8.1				
50		9.1	8.4	7.6				
55			7.9	7.1	6.6			
60			6.8	6.0	5.5	4.9		
65			5.8	5.2	4.7	4.0	3.2	
70				4.4	3.9	3.3	2.6	
75					3.7	3.3	2.7	
80						2.8	2.2	
						2.3		

Capacities in metric tons with luffing jib (No. 1916.xx) 85.5 t counterweight + 36 t carbody counterweight. Above lift chart is for reference only. For actual lift duty and complete chart with all available configurations please refer to lift chart in operator's cab or manual.

Working range - luffing jib (No. 1916.xx) 78° - 15°

Main boom 88° - 45°

120 t suspended counterweight at 13 m radius



Boom configuration for main boom lengths (43.4 m - 72.5 m) – see table 1 on page 10
Jib configuration for jib lengths (20 m - 95 m)

	Length	Amount of luffing jib extensions																										
Luffing jib foot	7.0 m	1	1	1	1	1	1	1	1	1	1	1	1	1	1	1	1	1	1	1	1	1	1	1				
Luffing jib insert	3.0 m		1		1		1		1		1		1		1		1		1		1		1					
Luffing jib insert	6.0 m	1	1			1	1			1	1			1	1			1	1			1	1					
Luffing jib insert	12.0 m			1	1	1	1	1	2	2	2	2	3	3	3	3	4	4	4	4	5	5	5	5	6	6	6	6
Luffing jib head	7.0 m	1	1	1	1	1	1	1	1	1	1	1	1	1	1	1	1	1	1	1	1	1	1	1	1	1	1	1
Luffing jib length (m)		20	23	26	29	32	35	38	41	44	47	50	53	56	59	62	65	68	71	74	77	80	83	86	89	92	95	

Lift chart – luffing jib (No. 1916.xx)

Main boom angle 75°

120 t suspended counterweight at 13 m radius

Main boom 43.4 m

Radius (m)	Jib length in (m)							
	20	29	41	53	62	71	83	95
22.9	t	t	t	t	t	t	t	t
26	52.9							
28	49.2							
32	46.7	38.3						
38	41.5	35.4	23.9					
42		30.7	21.8	16.6				
46		26.4	20.2	16.1	12.2			
50			18.5	15.6	11.9	8.6		
55			17.0	14.2	11.6	8.3	5.6	
60				14.1	11.2	8.1	5.4	3.3
65				13.5	10.8	7.9	5.2	3.2
70				12.1	10.4	7.7	4.9	3.0
75					9.9	7.5	4.7	2.8
80						7.3	4.5	2.5
85						7.0	4.2	2.3
90							4.1	2.1
95							3.9	

Main boom 49.1 m

Radius (m)	Jib length in (m)							
	20	29	41	53	62	71	83	95
24.4	t	t	t	t	t	t	t	t
30	47.8							
34	43.5	36.1						
40	38.9	33.9	22.9					
42		28.7	21.0	15.9				
44		27.5	20.3	15.7				
46			19.6	15.5	11.7			
50			18.9	15.3	11.6	9.2		
55			17.3	13.9	11.3	8.1		
60			15.5	13.7	11.0	7.9	5.3	
65				13.5	10.8	7.7	5.1	3.1
70				12.4	10.6	7.5	4.9	2.9
75					10.2	7.4	4.6	2.7
80					9.4	7.2	4.4	2.5
85						7.0	4.2	2.3
90							4.0	2.1
95							3.7	

Main boom 55.1 m

Radius (m)	Jib length in (m)							
	20	29	41	53	62	71	83	95
26	t	t	t	t	t	t	t	t
28	45.0							
30	43.7							
36	42.3	34.9						
40	37.0	32.4	22.0					
44		28.7	20.9	15.4				
48		26.7	19.7	14.3	11.2			
55			18.4	13.9	11.1	8.0		
60			16.1	13.4	10.7	7.8	5.2	
65				13.2	10.5	7.6	5.0	3.1
70				12.4	10.4	7.4	4.8	2.9
75					10.2	7.3	4.6	2.7
80					9.6	7.1	4.4	2.5
85						6.9	4.2	2.3
90						6.7	4.0	2.1
95							3.9	
							3.7	

Main boom 60.8 m

Radius (m)	Jib length in (m)							
	20	29	41	53	62	71	83	95
27.4	t	t	t	t	t	t	t	t
30	40.5							
32	39.7							
38	38.4	32.1						
42	15.1	29.5	20.7					
46		27.3	19.8	13.7				
50		24.5	18.8	13.5	10.5			
55			17.6	13.1	10.4	7.6		
60			16.2	12.8	10.3	7.5	4.9	
65				12.7	10.1	7.3	4.8	2.9
70				12.2	10.0	7.2	4.7	2.8
75				11.0	9.8	7.1	4.5	2.6
80					9.3	6.9	4.3	2.4
85						6.8	4.1	2.3
90						6.5	3.9	2.1
95							3.8	
							3.7	

Main boom 66.8 m

Radius (m)	Jib length in (m)							
	20	29	41	53	62	71	83	95
29	t	t	t	t	t	t	t	t
34	36.8							
38	34.8	29.1						
44	31.9	27.8	19.8					
48		24.7	18.8	13.0				
55		22.4	17.9	12.8	9.9			
60			16.1	12.3	9.8	7.2		
65			13.7	12.2	9.7	7.1	4.6	
70				11.9	9.5	7.0	4.5	2.7
75				11.4	9.4	6.8	4.3	2.6
80					9.1	6.7	4.2	2.4
85					8.5	6.5	4.0	2.2
95						6.3	3.8	2.0
100							3.6	
							3.4	

Main boom 72.5 m

Radius (m)	Jib length in (m)							
	20	29	41	53	62	71	83	95
30.5	t	t	t	t	t	t	t	t
36	31.9							
40	28.8	25.2						
46	26.2	23.4	18.2					
48		21.0	17.4	12.0				
50		20.2	17.0	11.9				
55			16.5	11.8	9.1			
60			15.3	11.5	9.0	6.8		
65			13.5	11.2	9.0	6.7	4.4	
70				10.8	8.8	6.6	4.3	2.6
75				10.2	8.7	6.5	4.1	2.4
80					8.4	6.4	4.0	2.3
85					7.9	6.2	3.8	2.1
90						5.7	3.5	
100							3.3	

Capacities in metric tons with luffing jib (No. 1916.xx) 85.5 t counterweight, 36 t carbody counterweight and 120 t suspended counterweight. Above lift chart is for reference only. For actual lift duty and complete chart with all available configurations please refer to lift chart in operator's cab or manual.

Lift chart - luffing jib (No. 1916.xx)

Main boom angle 65°

120 t suspended counterweight at 13 m radius

Main boom 43.4 m

Radius (m)	Jib length in (m)							
	20	29	41	53	62	71	83	95
33.1	t	t	t	t	t	t	t	t
38	47.3							
40	44.2							
46	42.6	34.8						
48		31.1	21.0					
55		28.9	20.6					
60			17.9	13.9				
65			16.3	13.6	10.8			
70				13.3	10.6	7.5		
75				12.4	10.5	7.4	4.7	
80					10.2	7.3	4.5	
85					9.8	7.2	4.4	2.4
90						7.2	4.2	2.3
95						7.0	4.1	2.1
100							4.0	
							3.9	

Main boom 49.1 m

Radius (m)	Jib length in (m)							
	20	29	41	53	62	71	83	95
35.5	t	t	t	t	t	t	t	t
38	44.4							
42	43.7							
48	41.4	33.8						
50		30.9	20.3					
55		28.9	20.0					
60			18.6	13.5				
65			17.0	13.3	10.3			
70				13.1	10.3	8.2		
75				12.7	10.2	7.2		
80				11.7	10.1	7.2	4.4	
85					10.0	7.1	4.3	2.3
90						7.1	4.2	2.2
95						7.0	4.0	2.1
100							3.9	
							3.9	

Main boom 55.1 m

Radius (m)	Jib length in (m)							
	20	29	41	53	62	71	83	95
38	t	t	t	t	t	t	t	t
44	41.4							
50	39.9	32.3						
55		30.5						
60			19.0					
65			17.5	12.9				
70			16.1	12.8	9.9			
75				12.7	9.9	7.0		
85				12.5	9.9	7.0	4.3	
90					9.8	6.9	4.1	2.2
95						6.9	4.0	2.1
105						6.9	3.9	
							3.8	

Main boom 60.8 m

Radius (m)	Jib length in (m)							
	20	29	41	53	62	71	83	95
40.4	t	t	t	t	t	t	t	t
46	38.5							
48	37.4	29.4						
55	15.1	29.3						
60		27.5	18.6					
65			17.8	12.3				
70			16.6	12.3	9.4			
80				12.2	9.3	6.7		
85				11.5	9.3	6.7	4.1	
90					9.3	6.7	4.0	2.1
95						6.7	3.9	2.0
105						6.7	3.8	
							3.7	

Main boom 66.8 m

Radius (m)	Jib length in (m)							
	20	29	41	53	62	71	83	95
43	t	t	t	t	t	t	t	t
50	35.2							
55	32.3	27.2						
65		25.8	17.9					
70			16.7	11.7				
75			15.7	11.7	8.8			
80				11.7	8.8	6.4		
90				11.7	8.9	6.4	3.9	
100					8.8	6.4	3.8	2.3
105						6.4	3.6	2.1
110							3.6	
							3.6	

Main boom 72.5 m

Radius (m)	Jib length in (m)							
	20	29	41	53	62	71	83	95
43	t	t	t	t	t	t	t	t
50	35.2							
55	32.3	27.2						
65		25.8	17.9					
70			16.7	11.7				
75			15.7	11.7	8.8			
80				11.7	8.8	6.4		
90				11.7	8.9	6.4	3.9	
95					8.8	6.4	3.8	2.3
100						6.4	3.7	2.2
110						6.4	3.6	2.1
							3.6	

Capacities in metric tons with luffing jib (No. 1916.xx) 85.5 t counterweight, 36 t carbody counterweight and 120 t suspended counterweight. Above lift chart is for reference only. For actual lift duty and complete chart with all available configurations please refer to lift chart in operator's cab or manual.

Lift chart – luffing jib (No. 1916.xx)

Main boom angle 45°

120 t suspended counterweight at 13 m radius

Main boom 43.4 m

Radius (m)	Jib length in (m)						
	20	29	41	53	62	71	83
50.2	36.4	t	t	t	t	t	t
60		29.2					
70			16.9				
80				12.0			
85				11.9	9.1		
90					9.1		
95						6.3	
100						6.3	
105							3.5
110							3.5

Main boom 49.1 m

Radius (m)	Jib length in (m)						
	20	29	41	53	62	71	83
54.2	32.8	t	t	t	t	t	t
55	32.3						
65		26.1					
75			16.6				
85				11.6			
90					8.8		
95					8.8		
100						6.1	
105						6.1	
110							3.3
115							3.3

Main boom 55.1 m

Radius (m)	Jib length in (m)						
	20	29	41	53	62	71	83
58.5	29.4	t	t	t	t	t	t
60	28.5						
70		15.1					
80			16.3				
90				11.1			
95					8.4		
100					8.4		
105						5.9	
110						5.9	
115							3.2
120							3.2

Main boom 60.8 m

Radius (m)	Jib length in (m)						
	20	29	41	53	62	71	83
62.5	25.9	t	t	t	t	t	t
65	24.7						
70		22.0					
80			16.0				
85			15.9				
90				10.6			
95				10.6			
100					8.0		
105					8.0	5.6	
110						5.6	
115							3.0
125							3.0

Main boom 66.8 m

Radius (m)	Jib length in (m)						
	20	29	41	53	62	71	83
66.8	22.5	t	t	t	t	t	t
75		18.9					
85			15.4				
90			14.2				
95				10.0			
100				10.0			
105					7.6		
110					7.6	5.3	
115						5.3	
120							2.8
130							2.8

Main boom 72.5 m

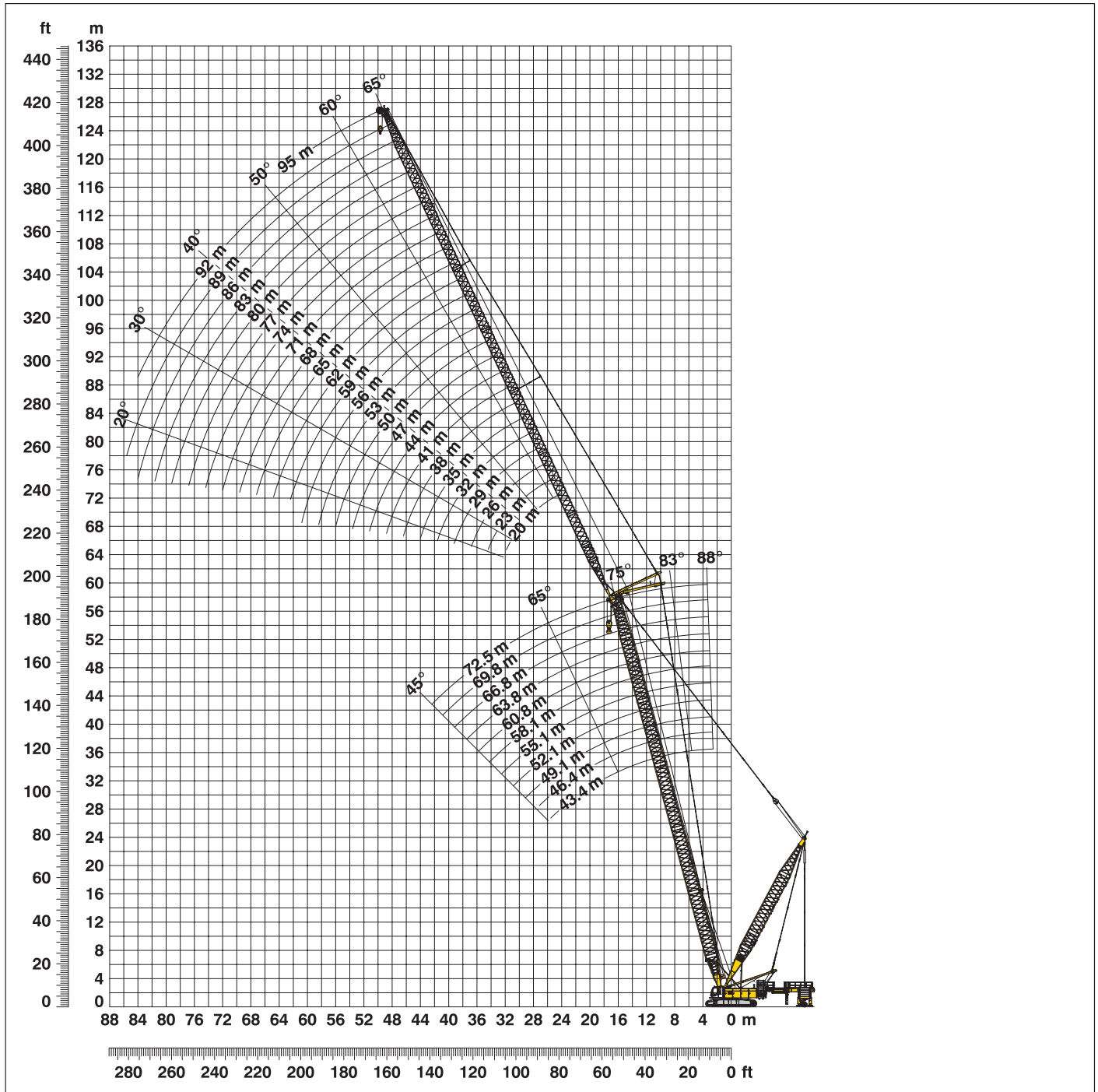
Radius (m)	Jib length in (m)						
	20	29	41	53	62	71	83
70.8	19.6	t	t	t	t	t	t
80		16.2					
90			12.9				
100				9.0			
105				9.0			
110					7.0		
115						5.0	
120						5.0	
125							2.6
130							2.6

Capacities in metric tons with luffing jib (No. 1916.xx) 85.5 t counterweight, 36 t carbody counterweight and 120 t suspended counterweight. Above lift chart is for reference only. For actual lift duty and complete chart with all available configurations please refer to lift chart in operator's cab or manual.

Working range - luffing jib (No. 1916.xx) 78° - 15°

Main boom 88° - 45°

120 t wheeled counterweight carriage at 11.4 m - 15 m radius



Boom configuration for main boom lengths (43.4 m - 72.5 m) – see table 1 on page 10
Jib configuration for jib lengths (20 m - 95 m)

	Length	Amount of luffing jib extensions																									
Luffing jib foot	7.0 m	1	1	1	1	1	1	1	1	1	1	1	1	1	1	1	1	1	1	1	1	1	1	1			
Luffing jib insert	3.0 m				1	1			1			1			1			1			1			1			
Luffing jib insert	6.0 m	1	1			1	1			1	1			1	1			1	1			1	1				
Luffing jib insert	12.0 m			1	1	1	1	2	2	2	2	3	3	3	3	4	4	4	4	5	5	5	5	6	6	6	6
Luffing jib head	7.0 m	1	1	1	1	1	1	1	1	1	1	1	1	1	1	1	1	1	1	1	1	1	1	1	1	1	
Luffing jib length (m)		20	23	26	29	32	35	38	41	44	47	50	53	56	59	62	65	68	71	74	77	80	83	86	89	92	95

Lift chart – luffing jib (No. 1916.xx)

Main boom angle 75°

120 t wheeled counterweight carriage at 15 m radius

Main boom 43.4 m

Radius (m)	Jib length in (m)							
	20	29	41	53	62	71	83	95
22.9	t	t	t	t	t	t	t	t
26	52.9							
28	49.2							
32	46.7	38.3						
38	41.5	35.4	23.9					
42		30.7	21.8	16.6				
46		26.4	20.2	16.1	12.2			
50			18.5	15.6	11.9	8.6		
55			17.0	14.2	11.6	8.3	5.6	
60				14.1	11.2	8.1	5.4	3.3
65				13.5	10.8	7.9	5.2	3.2
70				12.1	10.4	7.7	4.9	3.0
75					9.9	7.5	4.7	2.8
80						7.3	4.5	2.5
85						7.0	4.2	2.3
90							4.1	2.1
95							3.9	

Main boom 49.1 m

Radius (m)	Jib length in (m)							
	20	29	41	53	62	71	83	95
24.4	t	t	t	t	t	t	t	t
30	47.8							
34	43.5	36.1						
40	38.9	33.9	22.9					
42		28.7	21.0	15.9				
44		27.5	20.3	15.7				
46			19.6	15.5	11.7			
50			18.9	15.3	11.6	9.2		
55			17.3	13.9	11.3	8.1		
60			15.5	13.7	11.0	7.9	5.3	
65				13.5	10.8	7.7	5.1	3.1
70				12.4	10.6	7.5	4.9	2.9
75					10.2	7.4	4.6	2.7
80					9.4	7.2	4.4	2.5
85						7.0	4.2	2.3
90							4.0	2.1
95							3.7	

Main boom 55.1 m

Radius (m)	Jib length in (m)							
	20	29	41	53	62	71	83	95
26	t	t	t	t	t	t	t	t
28	45.0							
30	43.7							
36	42.3	34.9						
40	37.0	32.4	22.0					
44		28.7	20.9	15.4				
48		26.7	19.7	14.3	11.2			
55			18.4	13.9	11.1	8.0		
60			16.1	13.4	10.7	7.8	5.2	
65				13.2	10.5	7.6	5.0	3.1
70				12.4	10.4	7.4	4.8	2.9
75					10.2	7.3	4.6	2.7
80					9.6	7.1	4.4	2.5
85						6.9	4.2	2.3
90						6.7	4.0	2.1
95							3.9	
							3.7	

Main boom 60.8 m

Radius (m)	Jib length in (m)							
	20	29	41	53	62	71	83	95
27.4	t	t	t	t	t	t	t	t
30	40.5							
32	39.7							
38	38.4	32.1						
42	15.1	29.5	20.7					
46		27.3	19.8	13.7				
50		24.5	18.8	13.5	10.5			
55			17.6	13.1	10.4	7.6		
60			16.2	12.8	10.3	7.5	4.9	
65				12.7	10.1	7.3	4.8	2.9
70				12.2	10.0	7.2	4.7	2.8
75				11.0	9.8	7.1	4.5	2.6
80					9.3	6.9	4.3	2.4
85						6.8	4.1	2.3
90						6.5	3.9	2.1
95							3.8	
							3.7	

Main boom 66.8 m

Radius (m)	Jib length in (m)							
	20	29	41	53	62	71	83	95
29	t	t	t	t	t	t	t	t
34	36.8							
38	34.8	29.1						
44	31.9	27.8	19.8					
48		24.7	18.8	13.0				
55		22.4	17.9	12.8	9.9			
60			16.1	12.3	9.8	7.2		
65			13.7	12.2	9.7	7.1	4.6	
70				11.9	9.5	7.0	4.5	2.7
75				11.4	9.4	6.8	4.3	2.6
80					9.1	6.7	4.2	2.4
85					8.5	6.5	4.0	2.2
95						6.3	3.8	2.0
100							3.6	
							3.4	

Main boom 72.5 m

Radius (m)	Jib length in (m)							
	20	29	41	53	62	71	83	95
30.5	t	t	t	t	t	t	t	t
36	31.9							
40	28.8	25.2						
46	26.2	23.4	18.2					
48		21.0	17.4	12.0				
50		20.2	17.0	11.9				
55			16.5	11.8	9.1			
60			15.3	11.5	9.0	6.8		
65			13.5	11.2	9.0	6.7	4.4	
70				10.8	8.8	6.6	4.3	2.6
75				10.2	8.7	6.5	4.1	2.4
80					8.4	6.4	4.0	2.3
85					7.9	6.2	3.8	2.1
90						5.7	3.5	
100							3.3	

Capacities in metric tons with luffing jib (No. 1916.xx) 85.5 t counterweight, 36 t carbody counterweight and 120 t wheeled counterweight carriage. Above lift chart is for reference only. For actual lift duty and complete chart with all available configurations please refer to lift chart in operator's cab or manual.

Lift chart - luffing jib (No. 1916.xx)

Main boom angle 65°

120 t wheeled counterweight carriage at 15 m radius

Main boom 43.4 m

Radius (m)	Jib length in (m)							
	20	29	41	53	62	71	83	95
33.1	t	t	t	t	t	t	t	t
38	47.3							
40	44.2							
46	42.6	34.8						
48		31.1	21.0					
55		28.9	20.6					
60			17.9	13.9				
65			16.3	13.6	10.8			
70				13.3	10.6	7.5		
75				12.4	10.5	7.4	4.7	
80					10.2	7.3	4.5	
85					9.8	7.2	4.4	2.4
90						7.2	4.2	2.3
95						7.0	4.1	2.1
100							4.0	
							3.9	

Main boom 49.1 m

Radius (m)	Jib length in (m)							
	20	29	41	53	62	71	83	95
35.5	t	t	t	t	t	t	t	t
38	44.4							
42	43.7							
48	41.4	33.8						
50		30.9	20.3					
55		28.9	20.0					
60			18.6	13.5				
65			17.0	13.3	10.3			
70				13.1	10.3	8.2		
75				12.7	10.2	7.2		
80				11.7	10.1	7.2	4.4	
85					10.0	7.1	4.3	2.3
90						7.1	4.2	2.2
95						7.0	4.0	2.1
100							3.9	
							3.9	

Main boom 55.1 m

Radius (m)	Jib length in (m)							
	20	29	41	53	62	71	83	95
38	t	t	t	t	t	t	t	t
44	41.4							
50	39.9	32.3						
55		30.5						
60			19.0					
65			17.5	12.9				
70			16.1	12.8	9.9			
75				12.7	9.9	7.0		
85				12.5	9.9	7.0	4.3	
90					9.8	6.9	4.1	2.2
95						6.9	4.0	2.1
105						6.9	3.9	
							3.8	

Main boom 60.8 m

Radius (m)	Jib length in (m)							
	20	29	41	53	62	71	83	95
40.4	t	t	t	t	t	t	t	t
46	38.5							
48	37.4	29.4						
55	15.1	29.3						
60		27.5	18.6					
65			17.8	12.3				
70			16.6	12.3	9.4			
80				12.2	9.3	6.7		
85				11.5	9.3	6.7	4.1	
90					9.3	6.7	4.0	2.1
95						6.7	3.9	2.0
105						6.7	3.8	
							3.7	

Main boom 66.8 m

Radius (m)	Jib length in (m)							
	20	29	41	53	62	71	83	95
43	t	t	t	t	t	t	t	t
50	35.2							
55	32.3	27.2						
65		25.8	17.9					
70			16.7	11.7				
75			15.7	11.7	8.8			
80				11.7	8.8	6.4		
90				11.7	8.9	6.4	3.9	
100					8.8	6.4	3.8	2.3
105						6.4	3.6	2.1
110							3.6	
							3.6	

Main boom 72.5 m

Radius (m)	Jib length in (m)							
	20	29	41	53	62	71	83	95
43	t	t	t	t	t	t	t	t
50	35.2							
55	32.3	27.2						
65		25.8	17.9					
70			16.7	11.7				
75			15.7	11.7	8.8			
80				11.7	8.8	6.4		
90				11.7	8.9	6.4	3.9	
95					8.8	6.4	3.8	2.3
100						6.4	3.7	2.2
110						6.4	3.6	2.1
							3.6	

Capacities in metric tons with luffing jib (No. 1916.xx) 85.5 t counterweight, 36 t carbody counterweight and 120 t wheeled counterweight carriage. Above lift chart is for reference only. For actual lift duty and complete chart with all available configurations please refer to lift chart in operator's cab or manual.

Lift chart – luffing jib (No. 1916.xx)

Main boom angle 45°

120 t wheeled counterweight carriage at 15 m radius

Main boom 43.4 m

Radius (m)	Jib length in (m)						
	20	29	41	53	62	71	83
50.2	41.0						
60		30.4					
70			16.9				
80				12.0			
85				11.9	9.1		
90					9.1		
95						6.3	
100						6.3	
105							3.5
110							3.5

Main boom 49.1 m

Radius (m)	Jib length in (m)						
	20	29	41	53	62	71	83
54.2	37.2						
55	36.6						
65		28.7					
75			16.6				
85				11.6			
90					8.8		
95					8.8		
100						6.1	
105						6.1	
110							3.3
115							3.3

Main boom 55.1 m

Radius (m)	Jib length in (m)						
	20	29	41	53	62	71	83
58.5	32.6						
60	31.7						
70		15.1					
80			16.3				
90				11.1			
95					8.4		
100					8.4		
105						5.9	
110						5.9	
115							3.2
120							3.2

Main boom 60.8 m

Radius (m)	Jib length in (m)						
	20	29	41	53	62	71	83
62.5	29.1						
65	27.7						
70		24.9					
80			16.0				
85			15.9				
90				10.6			
95				10.6			
100					8.0		
105					8.0	5.6	
110						5.6	
115							3.0
125							3.0

Main boom 66.8 m

Radius (m)	Jib length in (m)						
	20	29	41	53	62	71	83
66.8	25.4						
75		21.6					
85			15.4				
90			14.2				
95				10.0			
100				10.0			
105					7.6		
110					7.6	5.3	
115						5.3	
120							2.8
130							2.8

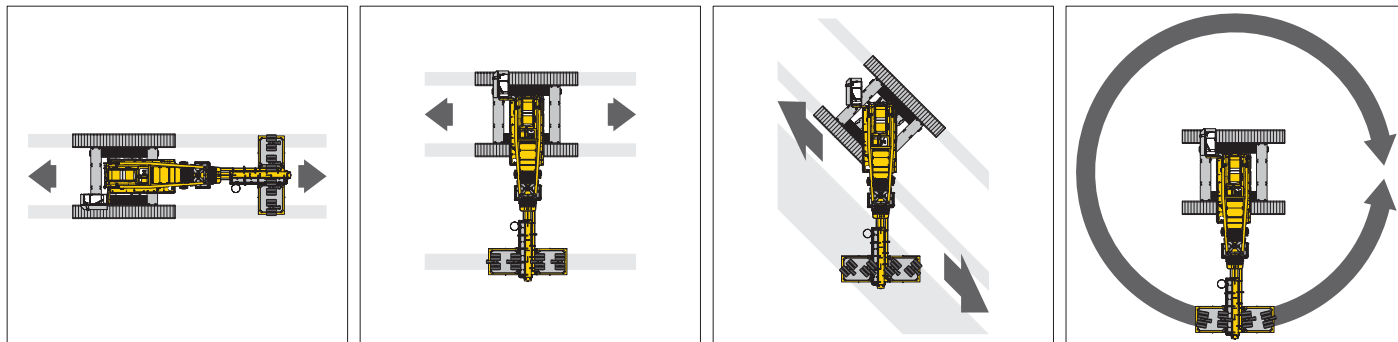
Main boom 72.5 m

Radius (m)	Jib length in (m)						
	20	29	41	53	62	71	83
70.8	22.4						
80		18.6					
90			12.9				
100				9.0			
105				9.0			
110					7.0		
115						5.0	
120						5.0	
125							2.6
130							2.6

Capacities in metric tons with luffing jib (No. 1916.xx) 85.5 t counterweight, 36 t carbody counterweight and 120 t wheeled counterweight carriage. Above lift chart is for reference only. For actual lift duty and complete chart with all available configurations please refer to lift chart in operator's cab or manual.

Drive options

Wheeled counterweight carriage



Carriage with steerable axles

Carriage with blocked steering axle

