

Basic machine with undercarriage

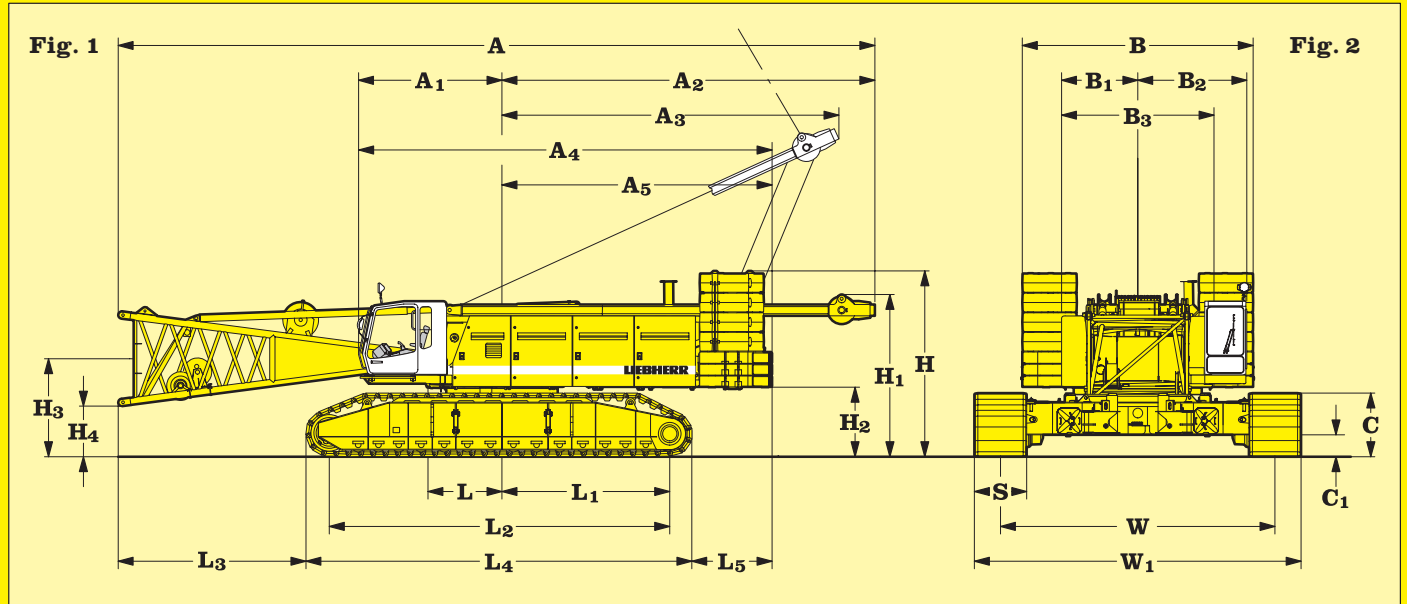


Fig. 1: Dimensions in

mm

A Overall length of superstructure with lowered A-frame and boom foot	17500
A₁ Centre of rotation - front edge of cabin	3300
A₂ Centre of rotation - lowered A-frame	8560
A₃ Tail reach- A-frame in working position	7750
A₄ Length of superstructure	9500
A₅ Tail swing radius	6200
H Height over counterweight	4300
H₁ Height over lowered A-frame	3840
H₂ Ground clearance of superstructure	1600
H₃ Ground clearance of boom foot pivot	2250
H₄ Ground clearance of horizontal boom foot	1160
L Centre of rotation - boom foot pivot	1700
L₁ Centre of rotation - centre of tumbler	3850
L₂ Wheel base (centre idler to centre tumbler)	7900
L₃ Distance from edge of horizontal boom foot to crawler	4300
L₄ Length of crawlers	9050
L₅ Distance between rear end of crawler and outside of counterweight	1625

Fig. 2: Dimensions in

mm

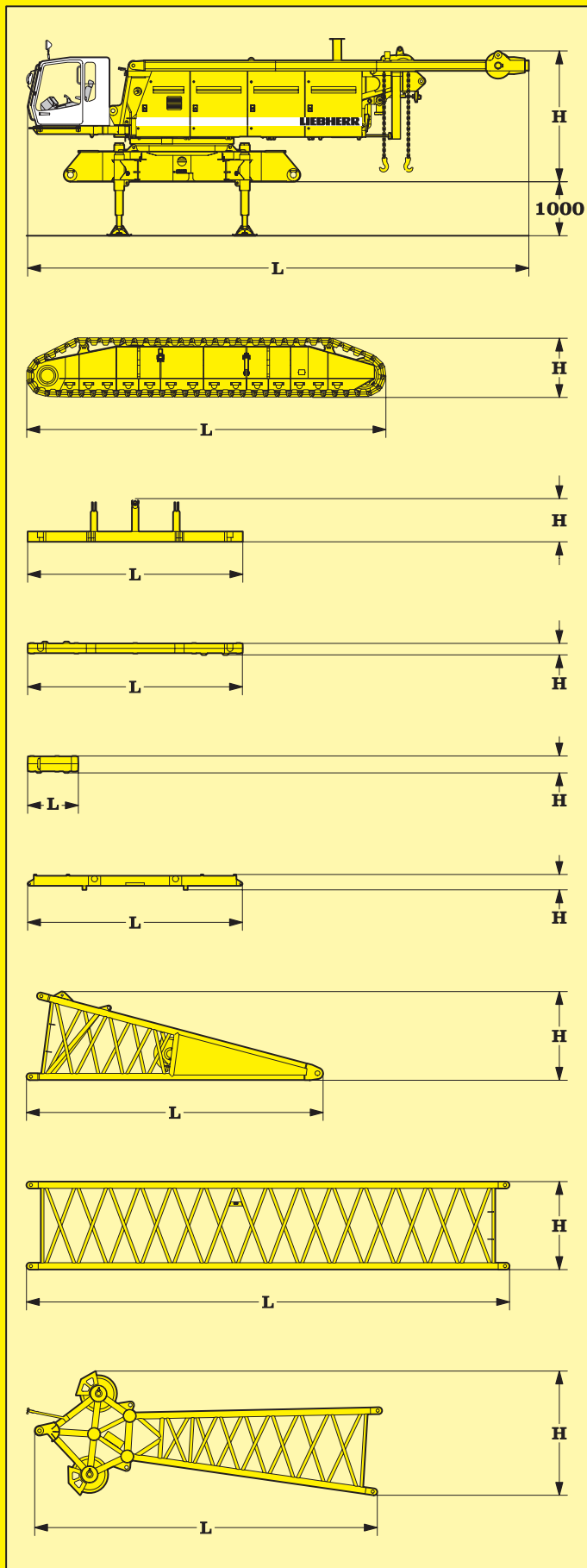
B Width of counterweight	5480
B₁ Centre of rotation - outside of superstructure	1750
B₂ Centre of rotation - outside of cabin in working position	2500
B₃ Width of superstructure	3500
C Height of crawlers	1460
C₁ Ground clearance of undercarriage	500
S Width of pads	1200
W Track width of undercarriage	6300
W₁ Width of undercarriage	7500

Operating weight and ground pressure

The operating weight includes the basic machine with crawlers, 2 main winches 15 t and 23 m main boom, consisting of A-frame, boom foot (7 m), boom head (7 m), boom extension (3 m), boom extension (6 m) 75.3 t basic counterweight and 27 t carbody counterweight and 210 t hook block.

with 1200 mm flat pads

197,5 t - 1.05 kg/cm²



*) Including pendants

Basic machine

with A-frame and 2x 15 t winches, without boom foot, basic counterweight, crawlers and carbody counterweight

Width	mm	3500
Weight	kg	41700
L Length	mm	12860
H Height	mm	3250

Crawler 2x

Width	mm	1450
Weight	kg	20500
L Length	mm	9050
H Height	mm	1460

Counterweight 1x

Width	mm	1660
Weight	kg	12600
L Length	mm	5480
H Height	mm	1100

Counterweight 2x

Width	mm	1660
Weight	kg	10600
L Length	mm	5480
H Height	mm	340

Counterweight 8x

Width	mm	1360
Weight	kg	5100
L Length	mm	1480
H Height	mm	500

Carbody counterweight 2x

Width	mm	1165
Weight	kg	13500
L Length	mm	5000
H Height	mm	380

Boom foot (HPT)

Width	mm	2420
Weight	kg	4600
L Length	mm	7350
H Height	mm	2200

Tubular

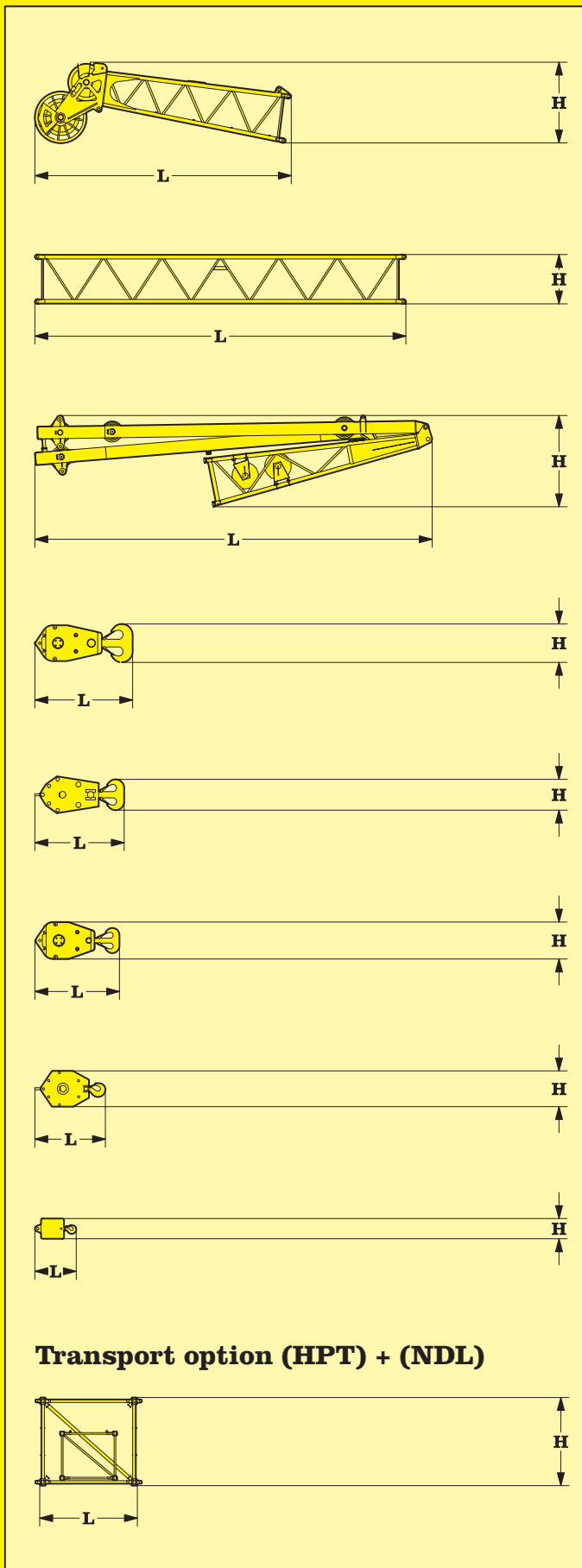
boom section (HPT)

	3 m	6 m	11.7 m	
Width	mm	2420	2420	2420
Weight*	kg	1125	1915	2850
L Length	mm	3250	6250	11950
H Height	mm	2340	2340	2340

Boom head (HPT)

Width	mm	2420
Weight*	kg	4280
L Length	mm	8500
H Height	mm	3060

Transport dimensions and weights



*) Including pendants

Jib head (NDL)

Width	mm	1400
Weight*	kg	1360
L Length	mm	6300
H Height	mm	2000

Tubular jib section (NDL)

		3 m	9 m
Width	mm	1400	1400
Weight*	kg	440	1030
L Length	mm	3140	9140
H Height	mm	1220	1220

Jib foot (NDL) with A-frames

Width	mm	1420
Weight*	kg	4900
L Length	mm	9800
H Height	mm	2450

210 t hook block - 9 sheaves

Width	mm	1200
Weight	kg	5500
L Length	mm	2400
H Height	mm	880

150 t hook block - 5 sheaves

Width	mm	760
Weight	kg	4000
L Length	mm	2130
H Height	mm	880

100 t hook block - 3 sheaves

Width	mm	680
Weight	kg	3300
L Length	mm	2010
H Height	mm	880

45 t hook block - 1 sheave

Width	mm	520
Weight	kg	2500
L Length	mm	1750
H Height	mm	880

16 t single hook

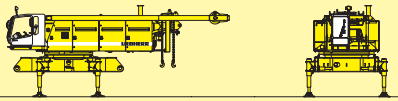
Width	mm	500
Weight	kg	900
L Length	mm	875
H Height	mm	500

Boom - jib transport option

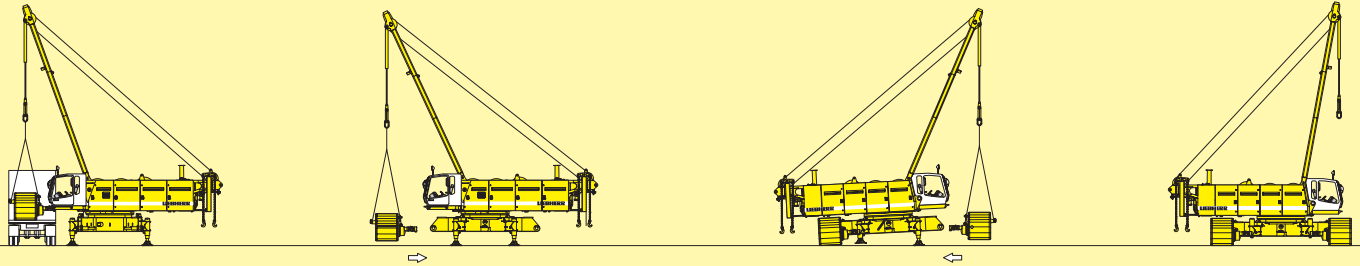
- 11.7 m boom - and 9 m jib extension
- 6 m boom - and 3 m jib extension
- 3 m boom - and 3 m jib extension

HPT/NDL	m	11.7/9.0	6.0/3.0	3.0/3.0
Width	mm	2420	2420	2420
Weight*	kg	3820	2355	1565
L Length	mm	11950	6250	3250
H Height	mm	2340	2340	2340

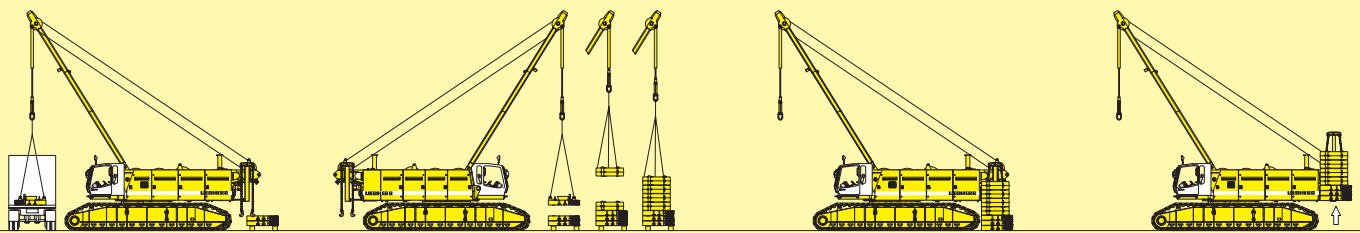
Transport dimensions and weights



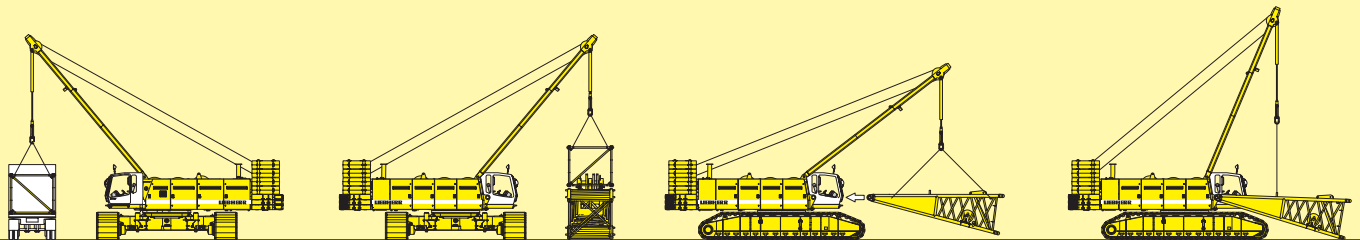
Unloading of basic machine and swinging out of cabin



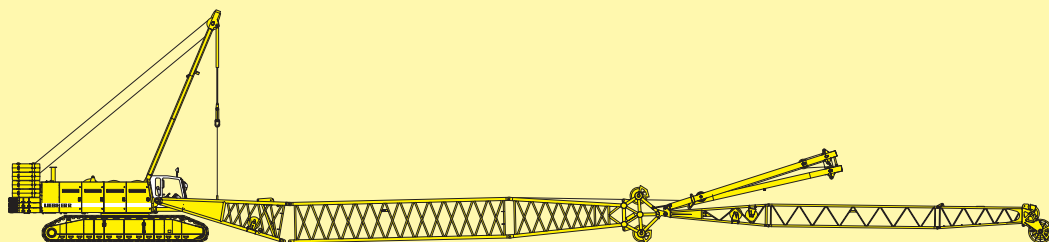
Unloading and assembly of crawlers



Unloading and assembly of counterweight

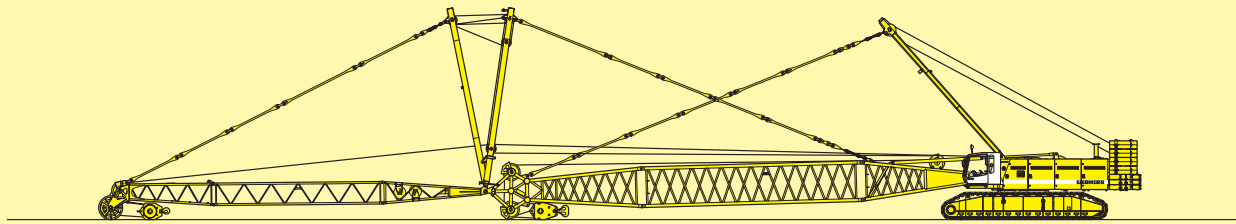


Unloading and assembly of boom - Assembly of boom foot

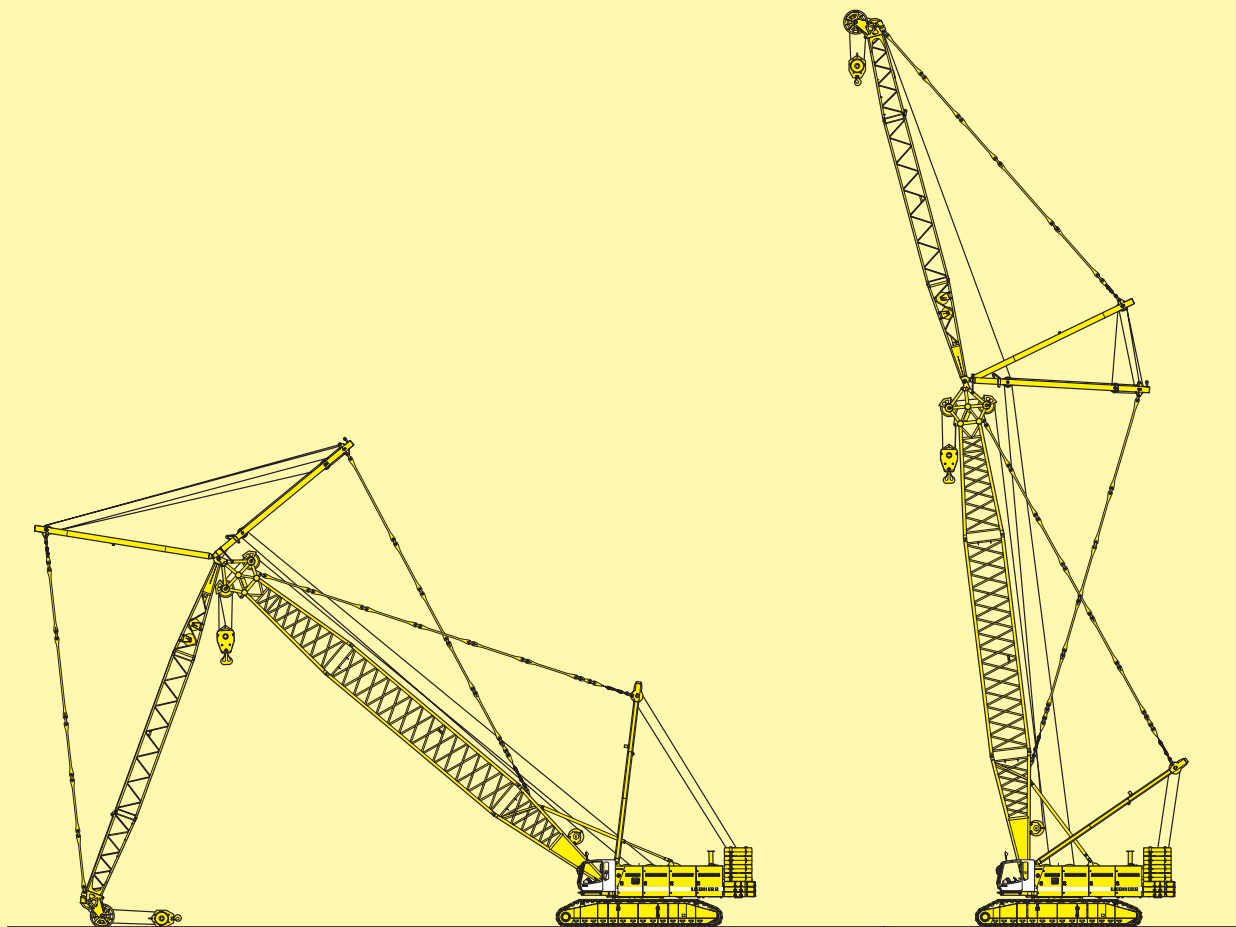


Assembly of boom and reeving of hoist and jib ropes

Self assembly system



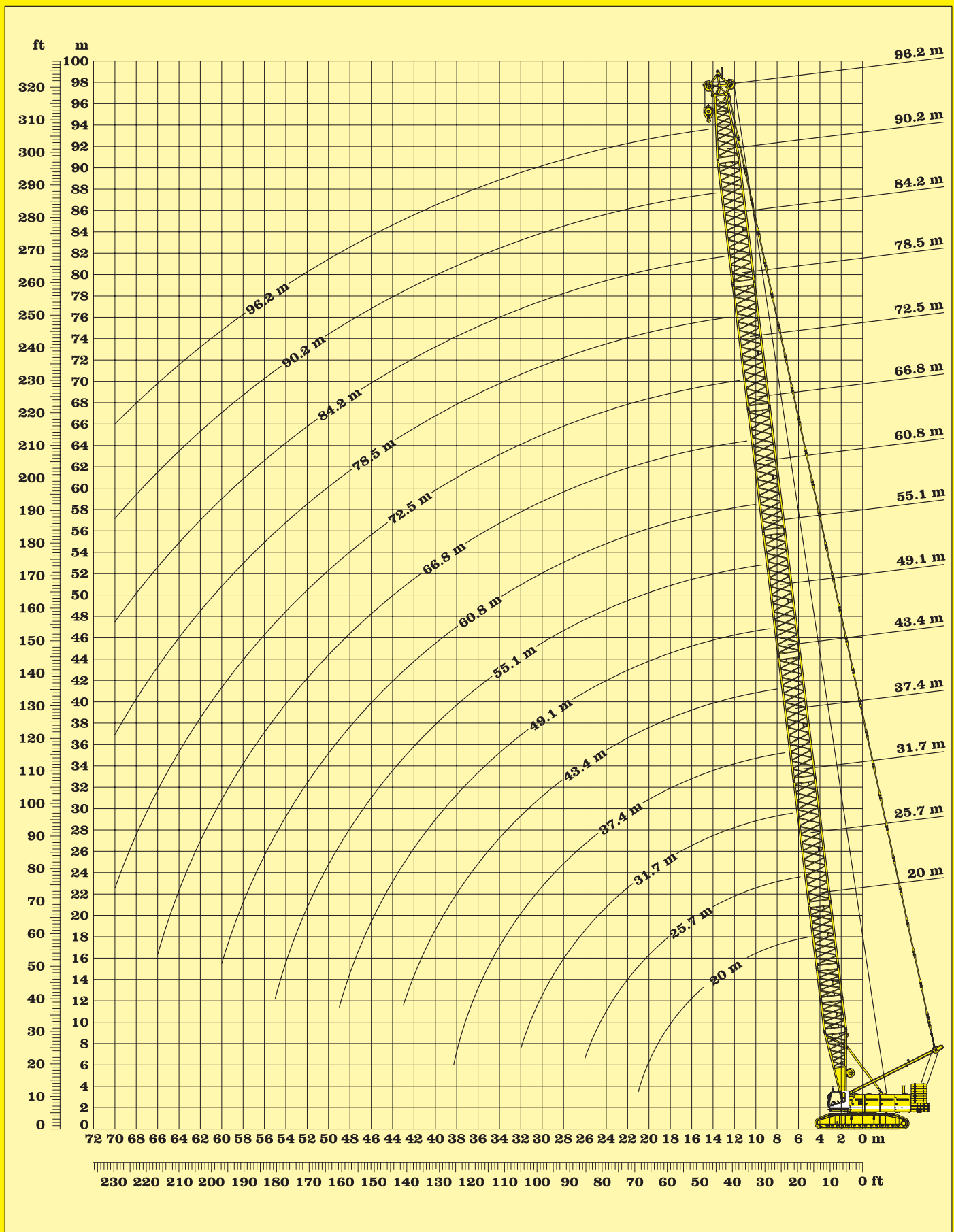
Luffing of boom



Luffing of jib

Working position

Booming up – crane in working position



Working range - main boom

Capacities in metric tons for boom length (HPT) between 20 m and 96.2 m: 75.3 t counterweight and 27 t carbody counterweight															
Boom length (HPT)	20.0 m	25.7 m	31.7 m	37.4 m	43.4 m	49.1 m	55.1 m	60.8 m	63.8 m	66.8 m	72.5 m	78.5 m	84.2 m	90.2 m	96.2m
Radius in (m)	t	t	t	t	t	t	t	t	t	t	t	t	t	t	t
5.0	*250.0														
6.0	*222.8	173.3													
7.0	183.3	165.7	152.2	131.2											
8.0	154.2	143.4	133.4	124.9	111.9	94.0									
9.0	132.8	124.6	116.7	110.1	103.6	93.4	82.4								
10.0	113.1	110.1	103.6	98.2	92.8	88.2	81.2	69.6	66.3	61.0					
11.0	97.7	97.9	93.0	88.5	83.8	80.0	76.0	69.3	66.2	61.0	51.3	45.9			
12.0	85.8	86.1	84.3	80.4	76.5	73.0	69.6	66.1	64.3	60.6	51.3	45.9	37.5		
13.0	76.3	76.6	76.5	73.6	70.2	67.1	64.1	61.3	59.9	58.1	51.1	45.7	37.2	33.0	29.2
14.0	68.6	68.9	68.8	67.8	64.7	62.0	59.2	56.8	55.5	54.3	50.7	45.4	37.4	33.0	29.2
15.0	62.2	62.5	62.4	62.3	60.0	57.6	55.0	52.8	51.6	50.5	48.2	44.8	37.0	32.8	29.1
16.0	56.8	57.1	57.0	56.9	55.8	53.6	51.3	49.3	48.2	47.2	45.3	42.9	36.6	32.5	28.9
17.0	52.2	52.5	52.4	52.3	52.0	50.1	48.0	46.1	45.1	44.1	42.4	40.5	36.0	32.1	28.6
18.0	48.2	48.5	48.4	48.3	48.0	47.0	45.0	43.3	42.3	41.4	39.8	38.0	35.3	31.6	28.2
19.0	44.7	45.1	44.9	44.8	44.5	44.1	42.3	40.7	39.8	39.0	37.4	35.7	34.3	31.0	27.8
20.0	41.5	42.0	41.9	41.8	41.5	41.2	39.9	38.4	37.5	36.7	35.3	33.7	32.3	30.3	27.5
21.0	38.7	39.3	39.2	39.0	38.7	38.5	37.7	36.3	35.5	34.7	33.3	31.8	30.5	28.9	27.2
22.0		36.8	36.7	36.6	36.3	36.1	35.6	34.3	33.6	32.8	31.5	30.1	28.8	27.4	25.9
23.0		34.6	34.5	34.4	34.1	33.9	33.5	32.5	31.8	31.1	29.8	28.4	27.2	25.9	24.6
24.0		32.6	32.6	32.4	32.1	31.9	31.5	30.9	30.2	29.5	28.3	27.0	25.8	24.5	23.2
25.0		30.8	30.7	30.6	30.3	30.1	29.7	29.3	28.7	28.0	26.9	25.6	24.5	23.2	22.0
26.0		29.1	29.1	29.0	28.7	28.4	28.1	27.8	27.3	26.7	25.5	24.3	23.2	22.0	20.8
27.0			27.6	27.5	27.2	26.9	26.6	26.2	26.0	25.4	24.3	23.1	22.0	20.9	19.7
28.0			26.2	26.1	25.8	25.5	25.2	24.9	24.7	24.2	23.1	22.0	20.9	19.8	18.6
29.0			24.9	24.8	24.5	24.3	23.9	23.6	23.4	23.1	22.0	20.9	19.9	18.8	17.7
30.0			23.7	23.6	23.3	23.1	22.7	22.4	22.2	22.0	21.0	19.9	18.9	17.9	16.7
31.0			22.5	22.5	22.2	22.0	21.6	21.3	21.1	20.9	20.0	19.0	18.0	17.0	15.9
32.0			21.5	21.5	21.2	21.0	20.6	20.3	20.1	19.8	19.1	18.1	17.2	16.1	15.1
33.0				20.5	20.3	20.0	19.6	19.3	19.1	18.9	18.3	17.3	16.3	15.3	14.3
34.0				19.6	19.4	19.1	18.7	18.4	18.2	18.0	17.5	16.5	15.6	14.6	13.5
35.0				18.8	18.5	18.3	17.9	17.6	17.4	17.2	16.7	15.7	14.8	13.9	12.8
36.0				18.0	17.7	17.5	17.1	16.8	16.6	16.4	16.0	15.0	14.1	13.2	12.2
37.0				17.2	17.0	16.8	16.4	16.1	15.8	15.6	15.3	14.3	13.5	12.5	11.5
38.0				16.4	16.3	16.0	15.7	15.4	15.1	14.9	14.6	13.7	12.9	11.9	10.9
39.0					15.6	15.4	15.0	14.7	14.5	14.3	13.9	13.1	12.3	11.3	10.4
40.0					15.0	14.8	14.4	14.1	13.8	13.6	13.3	12.5	11.7	10.8	9.8
41.0					14.4	14.2	13.8	13.5	13.3	13.0	12.7	11.9	11.1	10.2	9.3
42.0					13.8	13.6	13.2	12.9	12.7	12.5	12.1	11.4	10.6	9.7	8.8
43.0					13.2	13.1	12.7	12.4	12.2	12.0	11.6	10.9	10.1	9.2	8.3
44.0						12.5	12.2	11.9	11.6	11.4	11.0	10.4	9.6	8.8	7.8
45.0						12.0	11.7	11.4	11.2	10.9	10.5	9.9	9.2	8.3	7.4
46.0						11.6	11.2	10.9	10.7	10.4	10.0	9.5	8.7	7.9	7.0
47.0						11.1	10.8	10.5	10.2	10.0	9.6	9.0	8.3	7.4	6.5
48.0						10.7	10.3	10.0	9.8	9.5	9.1	8.6	7.9	7.0	6.1
49.0						10.2	9.9	9.6	9.3	9.1	8.7	8.2	7.5	6.7	5.8
50.0							9.5	9.2	8.9	8.7	8.3	7.7	7.1	6.3	5.4
51.0							9.1	8.8	8.5	8.3	7.9	7.3	6.8	5.9	5.0
52.0							8.7	8.4	8.1	7.9	7.5	7.0	6.4	5.6	4.7
53.0							8.3	8.0	7.8	7.5	7.1	6.6	6.1	5.2	4.4
54.0							7.9	7.6	7.4	7.2	6.8	6.2	5.7	4.9	4.1
55.0							7.6	7.3	7.1	6.8	6.4	5.9	5.4	4.6	3.7
56.0								7.0	6.7	6.5	6.1	5.6	5.1	4.3	3.5
57.0								6.6	6.4	6.2	5.8	5.3	4.8	4.0	3.2
58.0								6.3	6.1	5.9	5.5	5.0	4.5	3.7	2.9
59.0								6.0	5.8	5.6	5.2	4.7	4.2	3.5	2.6
60.0								5.7	5.5	5.3	4.9	4.4	3.9	3.2	2.4
61.0									5.2	5.0	4.6	4.1	3.7	2.9	2.1
62.0									4.9	4.7	4.4	3.8	3.4	2.7	1.9
63.0									4.7	4.5	4.1	3.6	3.2	2.4	1.6
64.0										4.2	3.9	3.3	2.9	2.2	1.4
65.0										4.0	3.6	3.1	2.7	2.0	1.2
66.0										3.7	3.4	2.9	2.4	1.8	
67.0											3.1	2.6	2.2	1.5	
68.0											2.9	2.4	2.0	1.3	
69.0											2.7	2.2	1.8	1.1	
70.0											2.5	2.0	1.6		
71.0											2.3	1.8	1.4		
72.0											2.1	1.6	1.2		
Hoist rope reeving minimum	20	13	12	10	9	8	6	5	5	5	4	4	3	3	3

Above lift chart is for reference only. For actual lift duty please refer to lift chart in operator's cab or manual.

*Requires heavy duty boom configuration.

Lifting capacities - main boom

Scope of delivery:

Basic machine LR 1250 consisting of:

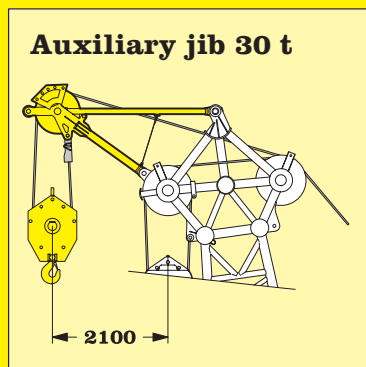
- Superstructure
- Main winches 2x 150 kN without free fall
- Main boom luffing winch 1x 150 kN including ropes
- Basic counterweight 75.3 t
- Hydraulic tilting cabin 20°
- Electronic load moment limiter LMB
- Hoisting limit switch
- Electric refuelling pump
- A-frame 1
- Undercarriage
- Flat pads 1200 mm wide
- Carbody counterweight 2x 13.5 t
- Standard tool set
- Self assembly system
- Main boom HPT, including pendants, corresponding length
- Ropes for main winches
- Corresponding hook block

Option:

- Back-up control system
- Air conditioning
- Auxiliary jib
- GSM-modem

Remarks:

1. The lifting capacities stated are valid for lifting operation only (corresponds with crane classification according to F.E.M. 1.001, crane group A1)
2. Crane standing on firm, horizontal ground.
3. The weight of the lifting device (hoisting ropes, hook block, shackle etc.) must be deducted from the gross lifting capacity to obtain a net lifting value.
4. Additional equipment on boom (e.g. boom walkways, auxiliary jib) must be deducted to get the net lifting capacity.
5. The lifting capacities stated do not exceed 75% of the tipping load.
6. For max. wind speed please refer to lift chart in operator's cab or manual.
7. The slewing speed of the load may not exceed 90 m/min.
8. Working radii are measured from centre of swing and under load.
9. The lifting capacities are valid for 360 degrees of swing.
10. Calculation of stability under load is based on DIN 15019 / part 2 / chart 1.
11. The structures are calculated according to DIN 15018 / part 3.



The lifting capacity of the auxiliary jib is equal to that of the main boom (HPT) at the same working radius, but must not exceed the maximum lifting capacity of 30 t.

Transport dimensions and weights Auxiliary jib

Width	mm	1260
Length	mm	3300
Height	mm	1600
Weight	kg	450

Reeving chart depending on maximum load:																				
Reeving	1	2	3	4	5	6	7	8	9	10	11	12	13	14	15	16	17	18	19	20
Max. load in t	14.8	29.3	43.7	57.8	71.7	85.4	98.9	112.2	125.3	138.2	150.9	163.4	175.7	187.8	199.8	211.6	223.2	234.6	245.9	250.0
Single hook 16 t																				
Hook block 45 t																				
Hook block 100 t																				
Hook block 150 t																				
Hook block 210 t																				
Hook block 250 t																				

Main boom configuration (HPT) for boom lengths between 20 m and 96.2 m:																									
Boom	Length	Amount of boom extensions																							
		foot	7.0 m	1	1	1	1	1	1	1	1	1	1	1	1	1	1	1	1	1	1	1	1	1	1
extension	3.0 m	0	1	0	1	0	1	0	1	0	1	0	1	0	1	0	1	0	1	0	1	0	1	0	2
extension	6.0 m	1	1	0	0	1	1	0	0	1	1	0	0	1	1	0	0	1	1	0	0	1	1	0	1
extension	11.7 m	0	0	1	1	1	1	2	2	2	2	3	3	3	3	4	4	4	4	5	5	5	5	6	6
head	7.0 m	1	1	1	1	1	1	1	1	1	1	1	1	1	1	1	1	1	1	1	1	1	1	1	1
Boom length (m)		20	23	25.7	28.7	31.7	34.7	37.4	40.4	43.4	46.4	49.1	52.1	55.1	58.1	60.8	63.8	66.8	69.8	72.5	75.5	78.5	81.5	84.2	87.2
Reeving		20	15	13	13	12	11	10	9	9	8	8	7	6	6	5	5	5	4	4	4	4	3	3	3

Scope of delivery and assembly of main boom

Scope of delivery:

Basic machine LR 1250 consisting of:

- Superstructure
- Main winches 2x 150 kN without free fall
- Main boom luffing winch 1x 150 kN with ropes
- Basic counterweight 75.3 t
- Hydraulic tilting cabin 20°
- Electronic load moment limiter LMB
- Hoisting limit switch
- Electric refuelling pump
- A-frame 1
- Undercarriage
- Flat pads 1200 mm wide
- Carbody counterweight 2x 13.5 t
- Standard tool set
- Self assembly system
- Main boom (HPT) including pendants, corresponding length
- Ropes for main winches
- Corresponding hook block
- Jib (NDL) including pendants, corresponding length
- Jib luffing winch 1x 105 kN with ropes

Option:

- Back-up control system
- Air conditioning
- Auxiliary jib
- GSM-modem

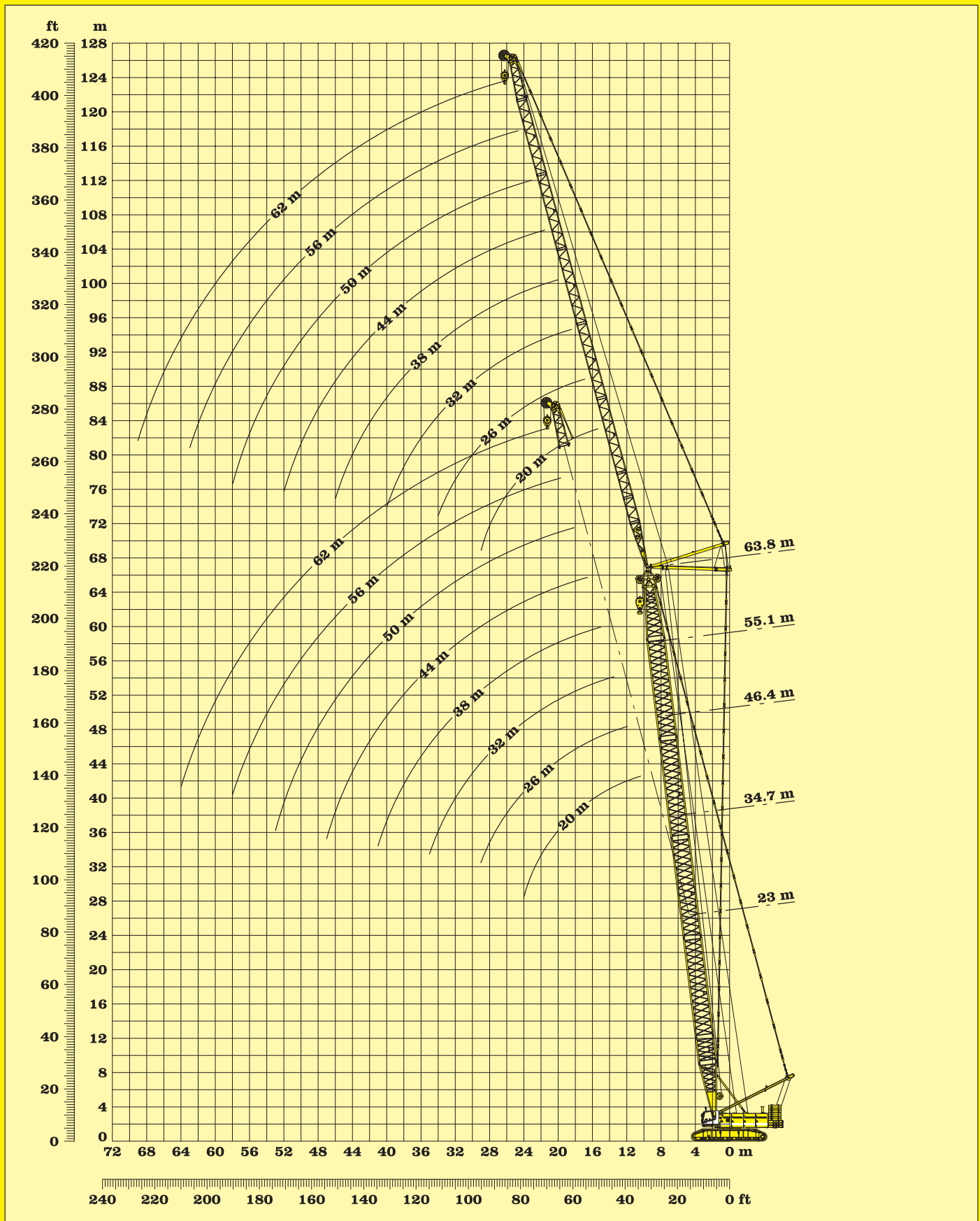
Remarks:

1. The lifting capacities stated are valid for lifting operation only (corresponds with crane classification according to F.E.M. 1.001, crane group A1)
2. Crane standing on firm, horizontal ground.
3. The weight of the lifting device (hoisting ropes, hook block, shackle etc.) must be deducted from the gross lifting capacity to obtain a net lifting value.
4. Additional equipment on boom (e.g. boom walkways, auxiliary jib) must be deducted to get the net lifting capacity.
5. The lifting capacities stated do not exceed 75% of the tipping load.
6. For max. wind speed please refer to lift chart in operator's cab or manual.
7. The slewing speed of the load may not exceed 90 m/min.
8. Working radii are measured from centre of swing and under load.
9. The lifting capacities are valid for 360 degrees of swing.
10. Calculation of stability under load is based on DIN 15019 / part 2 / chart 1.
11. The structures are calculated according to DIN 15018 / part 3.

Main boom configuration (HPT) for lengths between 23 m and 63.8 m:																
Boom	Length	Amount of boom extensions														
Foot	7.0 m	1	1	1	1	1	1	1	1	1	1	1	1	1	1	1
Extension	3.0 m	1	0	1	0	1	0	1	0	1	0	1	0	1	0	1
Extension	6.0 m	1	0	0	1	1	0	0	1	1	0	0	1	1	0	0
Extension	11.7 m	0	1	1	1	1	2	2	2	2	3	3	3	3	4	4
Head	7.0m	1	1	1	1	1	1	1	1	1	1	1	1	1	1	1
Boom length (m)		23	25.7	28.7	31.7	34.7	37.4	40.4	43.4	46.4	49.1	52.1	55.1	58.1	60.8	63.8
Reeving		15	13	13	12	11	10	9	9	8	8	7	6	6	5	5

Jib configuration (NDL) for lengths between 20 m and 62 m:																
	Length	Amount of boom extensions														
Boom foot	5.5 m	1	1	1	1	1	1	1	1	1	1	1	1	1	1	1
Boom ext.	3.0 m	0	1	2	0	1	2	0	1	2	0	1	2	0	1	2
Boom ext.	9.0 m	1	1	1	2	2	2	3	3	3	4	4	4	5	5	5
Boom head	5.5 m	1	1	1	1	1	1	1	1	1	1	1	1	1	1	1
Jib length (m)		20	23	26	29	32	35	38	41	44	47	50	53	56	59	62

Scope of delivery and assembly of main boom and luffing jib



Working range - luffing jib main boom 83°

Main boom (HPT)

23 m

Main boom (HPT)

34.7 m

Capacities in metric tons with luffing jib (NDL) Jib length between 20 m and 62 m 75.3 t counterweight + 27 t carbody counterweight								
Jib (NDL)	20m	26m	32m	38m	44m	50m	56m	62m
Radius in (m)	t	t	t	t	t	t	t	t
11	68.0							
12	69.3	54.3						
13	70.4	54.6						
14	68.8	55.0	42.4					
15	64.3	55.3	42.4	33.8				
16	60.3	55.6	41.9	33.6	25.3			
17	56.6	54.6	41.2	33.2	25.1			
18	52.6	51.6	40.6	32.6	24.8	18.7		
19	49.1	48.9	40.0	32.1	24.5	19.5	15.0	
20	46.0	45.9	39.1	31.5	24.3	19.3	14.9	
21	43.3	43.1	38.2	31.0	24.0	18.9	14.5	11.2
22	40.4	40.7	37.2	30.4	23.7	18.7	14.5	11.0
23	35.5	38.5	36.2	30.0	23.4	18.7	14.5	10.8
24	30.6	36.5	35.3	29.6	23.2	18.7	14.4	10.8
25		34.7	34.3	29.2	22.9	18.7	14.3	10.7
26		33.1	32.9	28.7	22.7	18.5	14.2	10.7
27		31.5	31.4	28.3	22.4	18.3	14.0	10.5
28		29.1	30.0	27.9	22.2	18.1	13.9	10.4
29		26.3	28.8	27.5	22.0	17.9	13.8	10.3
30			27.6	27.1	21.7	17.7	13.6	10.3
31			26.4	26.3	21.5	17.5	13.5	10.2
32			24.8	25.3	21.3	17.3	13.3	10.1
33			23.2	24.3	21.1	17.1	13.2	10.1
34			21.7	23.4	20.8	16.9	13.0	10.0
35			20.1	22.6	20.2	16.7	12.8	9.9
36				21.5	19.6	16.4	12.7	9.9
37				20.4	19.0	16.2	12.5	9.7
38				19.3	18.4	15.9	12.4	9.6
39				18.2	17.8	15.6	12.2	9.5
40				17.1	17.3	15.2	12.1	9.3
41				16.0	16.7	14.8	11.9	9.2
42					15.9	14.4	11.7	9.1
43					15.1	14.1	11.5	8.9
44					14.3	13.7	11.3	8.8
45					13.5	13.3	11.1	8.7
46					12.7	12.9	10.9	8.6
47					11.9	12.5	10.6	8.5
48						12.0	10.4	8.4
49						11.5	10.2	8.3
50						11.0	10.0	8.2
51						10.5	9.8	8.1
52						10.1	9.5	8.0
53						9.6	9.2	7.9
54							8.9	7.8
55							8.6	7.7
56							8.3	7.6
57							8.0	7.4
58							7.7	7.2
59								7.0
60								6.8
61								6.6
62								6.4
63								6.2
64								6.0
Reeving	5	4	3	3	2	2	2	2

Capacities in metric tons with luffing jib (NDL) Jib length between 20 m and 62 m 75.3 t counterweight + 27 t carbody counterweight								
Jib (NDL)	20m	26m	32m	38m	44m	50m	56m	62m
Radius in (m)	t	t	t	t	t	t	t	t
12	57.7							
13	57.7							
14	58.6	47.7						
15	58.3	48.0	37.7					
16	54.9	48.2	37.8	29.3				
17	51.9	48.4	37.8	29.3				
18	49.1	47.3	37.7	29.3	23.4			
19	46.7	44.9	37.7	29.2	22.7	17.8		
20	44.5	42.8	37.7	28.9	22.5	17.7		
21	42.4	40.8	37.5	28.7	22.5	17.5	13.6	
22	40.3	39.1	36.8	28.4	22.4	17.7	13.6	10.3
23	38.1	37.4	36.0	28.2	22.3	17.7	13.6	10.3
24	36.1	35.9	34.7	27.9	22.2	17.5	13.6	10.3
25	33.4	34.2	33.4	27.6	22.0	17.2	13.5	10.1
26		32.6	32.1	27.3	21.8	16.9	13.4	9.9
27		31.1	30.9	26.9	21.6	16.8	13.3	9.8
28		29.7	29.6	26.6	21.3	16.7	13.2	9.8
29		28.5	28.3	26.3	21.1	16.6	13.1	9.8
30		27.3	27.2	26.0	20.7	16.6	12.9	9.8
31		26.1	26.1	25.7	20.3	16.5	12.8	9.8
32			25.1	24.9	20.0	16.3	12.6	9.8
33			24.1	23.9	19.6	16.1	12.5	9.7
34			23.2	23.0	19.2	15.9	12.3	9.6
35			22.4	22.2	18.9	15.6	12.2	9.6
36			21.6	21.5	18.6	15.3	12.0	9.5
37			20.2	20.7	18.3	15.1	11.9	9.4
38				20.0	18.0	14.8	11.8	9.4
39				19.4	17.7	14.6	11.7	9.3
40				18.6	17.4	14.4	11.6	9.2
41				17.7	17.1	14.2	11.5	9.1
42				16.8	16.9	14.1	11.4	9.0
43					16.5	13.9	11.3	8.9
44					15.8	13.7	11.1	8.8
45					15.0	13.6	11.0	8.7
46					14.3	13.4	10.8	8.6
47					13.6	13.3	10.7	8.5
48					12.9	13.0	10.5	8.4
49						12.5	10.4	8.3
50						12.1	10.2	8.3
51						11.6	10.1	8.2
52						11.1	9.9	8.1
53						10.6	9.8	8.0
54						10.1	9.5	8.0
55							9.3	7.9
56							9.0	7.8
57							8.8	7.7
58							8.5	7.6
59							8.3	7.4
60							8.0	7.3
61								7.1
62								6.9
63								6.8
64								6.6
65								6.4
66								6.2
Reeving	5	4	3	2	2	2	2	2

Above lift chart is for reference only. For actual lift duty please refer to lift chart in operator's cab or manual.

Lifting capacities - luffing jib main boom 83°

Main boom (HPT)

46.4 m

Main boom (HPT)

55.1 m

Capacities in metric tons with luffing jib (NDL) Jib length between 20 m and 62 m 75.3 t counterweight + 27 t carbody counterweight								
Jib (NDL)	20m	26m	32m	38m	44m	50m	56m	62m
Radius in (m)	t	t	t	t	t	t	t	t
13	48.1							
14	48.3							
15	48.6	40.1						
16	49.0	40.2	33.1					
17	47.0	40.5	33.1					
18	44.7	40.8	33.1	26.9				
19	42.5	40.8	33.2	26.8	20.6			
20	40.5	39.0	33.2	26.6	20.6			
21	38.8	37.3	33.2	26.4	20.4	16.4		
22	37.1	35.7	33.0	26.2	19.8	16.1	12.7	
23	35.6	34.3	32.7	26.0	19.5	15.7	12.7	
24	34.2	32.9	31.8	25.8	19.2	15.5	12.6	9.8
25	33.0	31.7	30.6	25.6	18.9	15.4	12.4	9.6
26	31.8	30.5	29.5	25.3	18.6	15.2	12.2	9.4
27	30.6	29.4	28.4	24.9	18.4	15.1	12.1	9.4
28		28.4	27.4	24.6	18.3	15.0	12.0	9.3
29		27.5	26.5	24.2	18.1	14.8	11.8	9.3
30		26.6	25.6	23.8	17.9	14.6	11.7	9.2
31		25.7	24.8	23.4	17.6	14.5	11.6	9.1
32		24.7	24.1	23.1	17.3	14.3	11.4	9.0
33			23.4	22.5	17.0	14.1	11.3	8.9
34			22.7	21.8	16.8	14.0	11.1	8.9
35			21.9	21.2	16.5	13.9	11.0	8.8
36			21.2	20.6	16.2	13.7	10.8	8.8
37			20.4	20.0	15.9	13.6	10.7	8.8
38			19.8	19.5	15.6	13.5	10.6	8.7
39				19.0	15.4	13.4	10.5	8.7
40				18.4	15.1	13.2	10.4	8.6
41				17.8	14.9	13.1	10.2	8.6
42				17.2	14.6	12.9	10.1	8.5
43				16.7	14.4	12.6	10.0	8.5
44				16.2	14.1	12.4	9.9	8.4
45					13.8	12.2	9.8	8.4
46					13.5	12.0	9.7	8.3
47					13.2	11.8	9.6	8.3
48					12.9	11.5	9.5	8.2
49					12.6	11.3	9.4	8.2
50					12.3	11.1	9.3	8.1
51						10.9	9.2	8.0
52						10.7	9.1	7.9
53						10.5	9.0	7.8
54						10.3	8.9	7.7
55						10.1	8.8	7.6
56							8.6	7.6
57							8.5	7.5
58							8.3	7.4
59							8.2	7.3
60							8.0	7.2
61							7.9	7.0
62								6.9
63								6.8
64								6.6
65								6.5
66								6.3
67								6.2
Reeving	4	4	3	2	2	2	2	2

Capacities in metric tons with luffing jib (NDL) Jib length between 20 m and 62 m 75 t counterweight + 20 t carbody counterweight								
Jib (NDL)	20m	26m	32m	38m	44m	50m	56m	62m
Radius in (m)	t	t	t	t	t	t	t	t
15	40.5							
16	40.7	34.2						
17	40.9	34.2	29.0					
18	40.7	34.3	29.0					
19	39.5	34.3	29.0	23.9				
20	37.7	34.2	29.0	23.8	18.7			
21	36.0	33.7	29.0	23.7	18.6			
22	34.6	33.2	28.9	23.6	17.9	14.5		
23	33.2	31.9	28.6	23.4	17.8	14.5	11.2	
24	31.9	30.7	28.2	23.3	17.7	14.4	11.2	
25	30.7	29.5	27.8	23.1	17.6	14.1	11.3	8.9
26	29.7	28.5	27.3	22.9	17.4	14.0	11.5	8.9
27	28.7	27.5	26.5	22.6	17.3	13.8	11.6	8.9
28	27.8	26.5	25.6	22.1	17.1	13.7	11.5	8.9
29		25.7	24.7	21.7	16.9	13.6	11.3	8.9
30		24.9	23.9	21.2	16.7	13.3	11.1	8.9
31		24.1	23.2	20.8	16.5	13.1	10.8	8.8
32		23.4	22.5	20.3	16.3	12.8	10.7	8.8
33		22.7	21.8	19.9	16.0	12.6	10.5	8.7
34			21.2	19.4	15.7	12.3	10.4	8.6
35			20.6	19.0	15.4	12.2	10.2	8.6
36			20.0	18.5	15.1	12.1	10.1	8.5
37			19.5	18.1	14.8	12.0	9.9	8.4
38			19.0	17.6	14.5	12.0	9.8	8.4
39			18.4	17.2	14.1	11.9	9.6	8.3
40				16.7	13.8	11.8	9.5	8.2
41				16.2	13.4	11.8	9.3	8.2
42				15.8	13.0	11.7	9.2	8.1
43				15.3	12.6	11.4	9.1	8.0
44				14.9	12.2	11.1	8.9	7.9
45				14.4	11.9	10.9	8.8	7.8
46					11.5	10.6	8.6	7.7
47					11.1	10.3	8.5	7.6
48					10.7	10.0	8.4	7.4
49					10.3	9.8	8.3	7.3
50					9.9	9.5	8.2	7.3
51					9.6	9.3	8.0	7.2
52						9.0	7.9	7.1
53						8.8	7.8	7.0
54						8.6	7.7	6.9
55						8.4	7.5	6.8
56						8.2	7.5	6.7
57						8.0	7.5	6.6
58							7.4	6.5
59							7.4	6.5
60							7.4	6.4
61							7.3	6.3
62							7.3	6.2
63								6.1
64								6.0
65								6.0
66								5.9
67								5.8
68								5.7
69								
Reeving	4	3	3	2	2	2	2	2

Above lift chart is for reference only. For actual lift duty please refer to lift chart in operator's cab or manual.

Lifting capacities - luffing jib main boom 83°

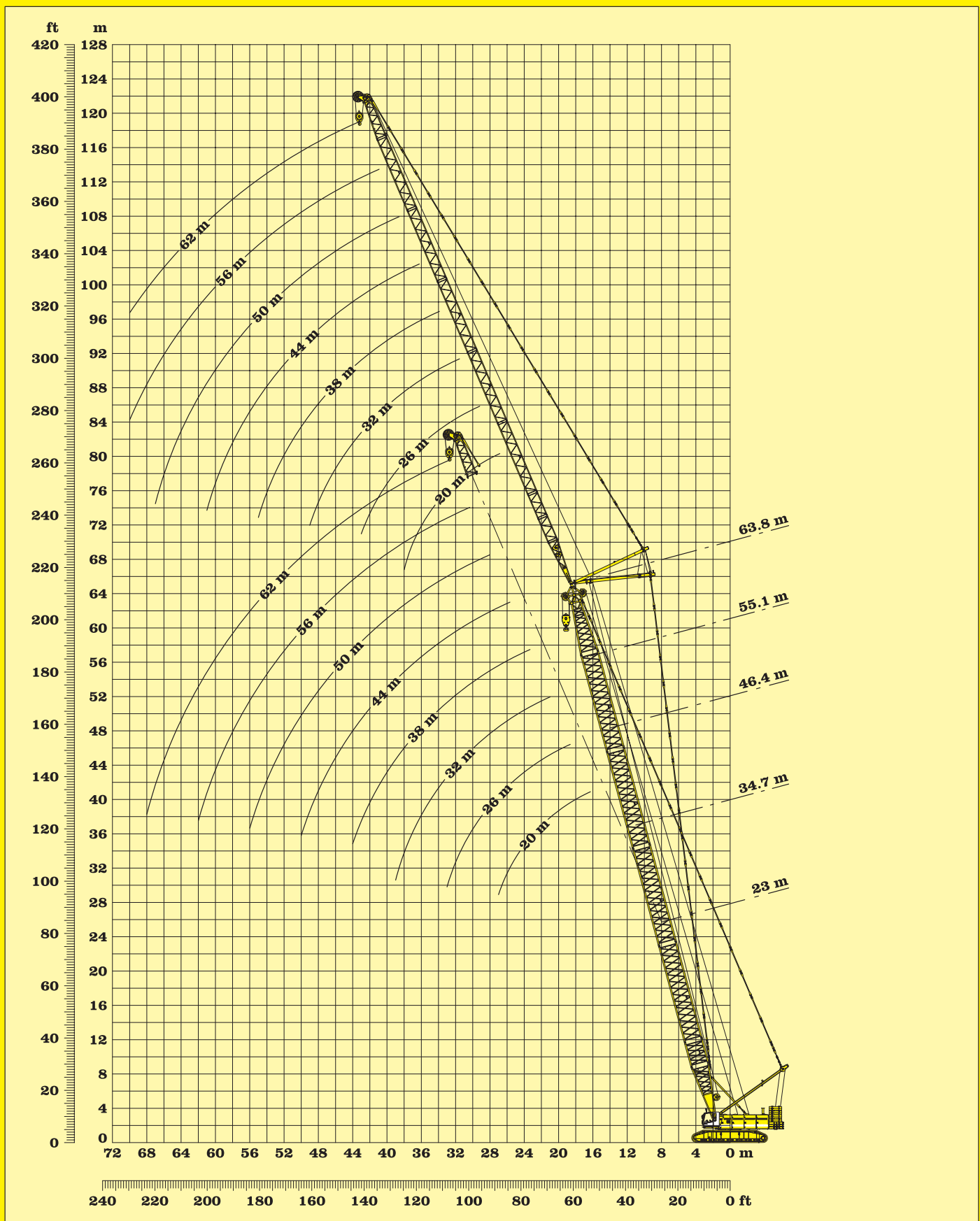
Main boom (HPT)

63.8 m

Capacities in metric tons with luffing jib (NDL)								
Jib length between 20 m and 62 m								
75 t counterweight + 20 t carbody counterweight								
Jib (NDL)	20m	26m	32m	38m	44m	50m	56m	62m
Radius in (m)	t	t	t	t	t	t	t	t
16	33.8							
17	33.9	29.2						
18	33.4	29.1						
19	33.0	29.0	25.0					
20	32.1	28.7	25.0	20.8				
21	31.2	28.1	24.8	20.7	16.4			
22	30.2	27.3	24.6	20.3	16.4			
23	29.2	26.6	24.3	20.0	16.1	12.9		
24	28.2	25.9	23.6	19.7	15.6	12.9	10.3	
25	27.5	25.2	22.9	19.4	15.4	12.7	10.3	
26	26.9	24.5	22.1	19.1	15.1	12.5	10.3	8.2
27	26.2	23.8	21.5	18.8	14.8	12.3	10.1	8.2
28	25.5	23.2	21.0	18.5	14.6	12.1	9.9	8.2
29	24.8	22.6	20.5	18.1	14.3	12.0	9.8	8.2
30		22.0	20.0	17.8	14.0	11.8	9.7	8.2
31		21.4	19.5	17.4	13.8	11.6	9.5	8.1
32		20.9	19.1	17.0	13.5	11.4	9.4	7.9
33		20.5	18.7	16.7	13.2	11.3	9.3	7.8
34		20.1	18.3	16.3	12.9	11.1	9.2	7.6
35			18.0	16.0	12.6	10.9	9.1	7.5
36			17.6	15.6	12.3	10.7	9.0	7.5
37			17.2	15.2	12.1	10.5	8.9	7.4
38			16.9	14.8	11.8	10.3	8.7	7.4
39			16.5	14.4	11.5	10.1	8.6	7.4
40			16.1	14.0	11.2	10.0	8.5	7.3
41				13.6	10.9	9.8	8.3	7.3
42				13.2	10.7	9.6	8.2	7.2
43				12.8	10.5	9.4	8.1	7.1
44				12.4	10.3	9.2	7.9	7.0
45				12.0	10.1	9.0	7.8	6.9
46				11.6	9.9	8.8	7.6	6.8
47					9.7	8.7	7.5	6.7
48					9.5	8.5	7.4	6.6
49					9.3	8.3	7.3	6.5
50					9.1	8.1	7.2	6.4
51					8.9	8.0	7.1	6.3
52					8.7	7.8	7.0	6.2
53						7.6	6.9	6.1
54						7.4	6.8	6.1
55						7.2	6.7	6.0
56						7.1	6.6	5.9
57						6.9	6.5	5.8
58						6.7	6.4	5.7
59							6.3	5.6
60							6.1	5.5
61							6.0	5.4
62							5.9	5.3
63							5.8	5.3
64								5.2
65								5.1
66								5.0
67								4.9
68								4.9
69								4.8
Reeving	4	3	3	2	2	2	2	2

Above lift chart is for reference only. For actual lift duty please refer to lift chart in operator's cab or manual.

Lifting capacities - luffing jib main boom 83°



Working range - luffing jib main boom 75°

Main boom (HPT)

23 m

Main boom (HPT)

34.7 m

Capacities in metric tons with luffing jib (NDL) Jib length between 20 m and 62 m 75.3 t counterweight + 27 t carbody counterweight								
Jib (NDL)	20m	26m	32m	38m	44m	50m	56m	62m
Radius in (m)	t	t	t	t	t	t	t	t
17	53.9							
18	50.4							
19	47.0	46.4						
20	44.1	43.8						
21	41.5	41.2	39.3					
22	39.1	38.9	38.5					
23	37.0	36.8	36.5	30.2				
24	35.1	34.9	34.6	30.2				
25	33.3	33.2	32.9	30.2				
26	31.7	31.6	31.4	29.8	22.8			
27	30.3	30.1	29.9	29.4	22.6			
28		28.8	28.6	28.4	22.4	18.4		
29		27.6	27.4	27.1	22.2	18.3		
30		26.4	26.3	26.0	22.0	18.1	13.4	
31		25.4	25.2	25.0	21.8	18.0	13.3	
32		24.4	24.2	24.0	21.6	17.8	13.3	9.9
33		23.4	23.3	23.1	21.4	17.6	13.3	9.8
34			22.5	22.3	21.2	17.5	13.2	9.7
35			21.7	21.5	21.0	17.3	13.2	9.7
36			20.9	20.7	20.4	17.1	13.2	9.6
37			20.2	20.0	19.7	17.0	13.1	9.5
38			19.5	19.3	19.1	16.8	12.9	9.5
39			18.9	18.7	18.4	16.7	12.8	9.4
40				18.1	17.8	16.5	12.6	9.3
41				17.5	17.3	16.3	12.4	9.2
42				17.0	16.7	16.1	12.3	9.2
43				16.5	16.2	15.8	12.1	9.1
44				16.0	15.8	15.5	11.9	9.0
45					15.3	15.1	11.8	8.9
46					14.9	14.6	11.6	8.8
47					14.4	14.2	11.5	8.7
48					14.0	13.8	11.3	8.6
49					13.6	13.4	11.2	8.5
50					13.3	13.1	11.0	8.5
51						12.7	10.8	8.4
52						12.4	10.7	8.3
53						12.0	10.5	8.2
54						11.7	10.4	8.2
55						11.3	10.2	8.1
56						10.8	9.9	8.0
57							9.6	8.0
58							9.4	7.9
59							9.1	7.8
60							8.8	7.7
61							8.6	7.5
62							8.3	7.4
63								7.2
64								7.1
65								6.9
66								6.8
67								6.6
68								6.5
Reeving	5	4	3	3	2	2	2	2

Capacities in metric tons with luffing jib (NDL) Jib length between 20 m and 62 m 75.3 t counterweight + 27 t carbody counterweight								
Jib (NDL)	20m	26m	32m	38m	44m	50m	56m	62m
Radius in (m)	t	t	t	t	t	t	t	t
20	40.7							
21	38.8							
22	37.1	35.7						
23	35.5	34.2						
24	33.7	32.8	31.4					
25	32.0	31.5	30.4					
26	30.5	30.2	29.2	27.7				
27	29.1	28.8	28.1	27.1				
28	27.8	27.5	27.1	26.1				
29	26.6	26.4	26.1	25.2	21.2			
30	25.5	25.3	25.0	24.4	21.2			
31		24.3	24.0	23.6	21.1	16.8		
32		23.3	23.1	22.8	20.9	16.8		
33		22.5	22.2	22.0	20.8	16.7	12.7	
34		21.6	21.4	21.2	20.5	16.6	12.7	
35		20.8	20.7	20.4	19.9	16.5	12.7	9.5
36		20.1	19.9	19.7	19.3	16.5	12.7	9.5
37			19.3	19.0	18.7	16.4	12.7	9.5
38			18.6	18.4	18.1	16.2	12.6	9.5
39			18.0	17.8	17.5	16.1	12.5	9.5
40			17.4	17.2	16.9	16.0	12.4	9.5
41			16.9	16.7	16.4	15.9	12.2	9.4
42			16.3	16.2	15.9	15.6	12.1	9.3
43				15.7	15.4	15.1	12.0	9.2
44				15.2	14.9	14.6	11.9	9.1
45				14.8	14.5	14.2	11.8	9.0
46				14.3	14.1	13.8	11.7	8.9
47				13.9	13.7	13.4	11.6	8.8
48					13.3	13.0	11.5	8.7
49					12.9	12.7	11.4	8.6
50					12.6	12.3	11.3	8.5
51					12.2	12.0	11.2	8.5
52					11.9	11.6	11.1	8.4
53					11.6	11.3	11.0	8.3
54						11.0	10.8	8.2
55						10.8	10.5	8.2
56						10.5	10.2	8.1
57						10.2	10.0	8.0
58							9.9	7.9
59							9.7	7.9
60								9.2
61								9.0
62								8.8
63								8.5
64								8.3
65								8.1
66								7.2
67								7.1
68								7.0
69								6.9
70								6.8
71								6.7
Reeving	5	4	3	3	2	2	2	2

Above lift chart is for reference only. For actual lift duty please refer to lift chart in operator's cab or manual.

Lifting capacities - luffing jib main boom 75°

Main boom (HPT)

46.4 m

Main boom (HPT)

55.1 m

Capacities in metric tons with luffing jib (NDL) Jib length between 20 m and 62 m 75.3 t counterweight + 27 t carbody counterweight								
Jib (NDL)	20m	26m	32m	38m	44m	50m	56m	62m
Radius in (m)	t	t	t	t	t	t	t	t
23	31.2							
24	29.9							
25	28.7	27.6						
26	27.7	26.5						
27	26.7	25.6	24.5					
28	25.7	24.6	23.7					
29	24.8	23.8	22.9	21.6				
30	24.0	23.0	22.1	21.3				
31	23.2	22.3	21.4	20.6				
32	22.3	21.6	20.7	19.9	19.0			
33	21.4	20.9	20.1	19.3	18.4			
34		20.3	19.5	18.7	17.8	15.5		
35		19.7	18.9	18.1	17.3	15.5		
36		19.0	18.3	17.6	16.7	15.5	11.6	
37		18.3	17.8	17.1	16.3	15.4	11.6	
38		17.7	17.3	16.6	15.8	15.1	11.6	9.1
39		17.1	16.9	16.1	15.3	14.6	11.6	9.1
40			16.4	15.7	14.9	14.2	11.7	9.1
41			15.9	15.3	14.5	13.8	11.8	9.1
42			15.4	14.9	14.1	13.4	11.7	9.1
43			14.9	14.5	13.7	13.1	11.6	8.9
44			14.5	14.1	13.4	12.7	11.6	8.8
45			14.0	13.8	13.0	12.4	11.5	8.7
46				13.4	12.7	12.1	11.4	8.7
47				13.0	12.4	11.8	11.1	8.6
48				12.7	12.1	11.5	10.9	8.5
49				12.3	11.8	11.2	10.6	8.5
50				12.0	11.5	10.9	10.3	8.4
51					11.2	10.6	10.0	8.4
52					11.0	10.4	9.8	8.3
53					10.7	10.1	9.5	8.2
54					10.5	9.9	9.3	8.2
55					10.2	9.7	9.1	8.1
56					9.9	9.4	8.9	8.0
57						9.2	8.6	8.0
58						9.0	8.4	7.8
59						8.8	8.2	7.6
60						8.6	8.1	7.4
61						8.4	7.9	7.2
62						8.3	7.7	7.1
63							7.5	6.9
64							7.3	6.7
65							7.2	6.6
66							7.0	6.4
67							6.9	6.3
68							6.7	6.1
69								6.0
70								5.8
71								5.7
72								5.6
Reeving	4	4	3	2	2	2	2	2

Capacities in metric tons with luffing jib (NDL) Jib length between 20 m and 62 m 75.3 t counterweight + 27 t carbody counterweight								
Jib (NDL)	20m	26m	32m	38m	44m	50m	56m	62m
Radius in (m)	t	t	t	t	t	t	t	t
25	25.8							
26	24.8							
27	23.9	22.8						
28	23.1	22.0						
29	22.3	21.3	20.1					
30	21.5	20.6	19.7					
31	20.9	19.9	19.1					
32	20.2	19.3	18.5	17.7				
33	19.6	18.7	17.9	17.1				
34	19.0	18.1	17.3	16.6	15.7			
35	18.5	17.6	16.8	16.1	15.2			
36		17.1	16.3	15.6	14.8	13.9		
37		16.6	15.9	15.1	14.3	13.6		
38		16.1	15.4	14.7	13.9	13.2	10.8	
39		15.7	15.0	14.3	13.5	12.8	10.8	
40		15.3	14.6	13.9	13.1	12.4	10.8	
41		14.9	14.2	13.5	12.8	12.1	10.8	8.4
42			13.8	13.2	12.4	11.8	10.8	8.4
43			13.5	12.8	12.1	11.4	10.7	8.4
44			13.1	12.5	11.8	11.1	10.5	8.4
45			12.8	12.2	11.4	10.8	10.2	8.3
46			12.5	11.9	11.1	10.5	9.9	8.2
47			12.2	11.6	10.9	10.2	9.6	8.2
48				11.3	10.6	10.0	9.4	8.1
49				11.0	10.3	9.7	9.1	8.1
50				10.8	10.1	9.5	8.9	8.1
51				10.5	9.8	9.2	8.6	8.0
52				10.3	9.6	9.0	8.4	7.8
53				10.1	9.4	8.8	8.2	7.5
54					9.1	8.6	8.0	7.3
55					8.9	8.3	7.8	7.1
56					8.7	8.1	7.6	6.9
57					8.5	8.0	7.4	6.8
58					8.3	7.8	7.2	6.6
59						7.6	7.0	6.4
60						7.4	6.8	6.2
61						7.2	6.7	6.1
62						7.1	6.5	5.9
63							6.9	6.4
64							6.8	6.2
65							6.0	5.4
66							5.9	5.3
67							5.8	5.2
68							5.6	5.0
69							5.5	4.9
70							5.4	4.8
71								4.6
72								4.5
73								
74								
Reeving	4	3	3	2	2	2	2	2

Above lift chart is for reference only. For actual lift duty please refer to lift chart in operator's cab or manual.

Lifting capacities - luffing jib main boom 75°

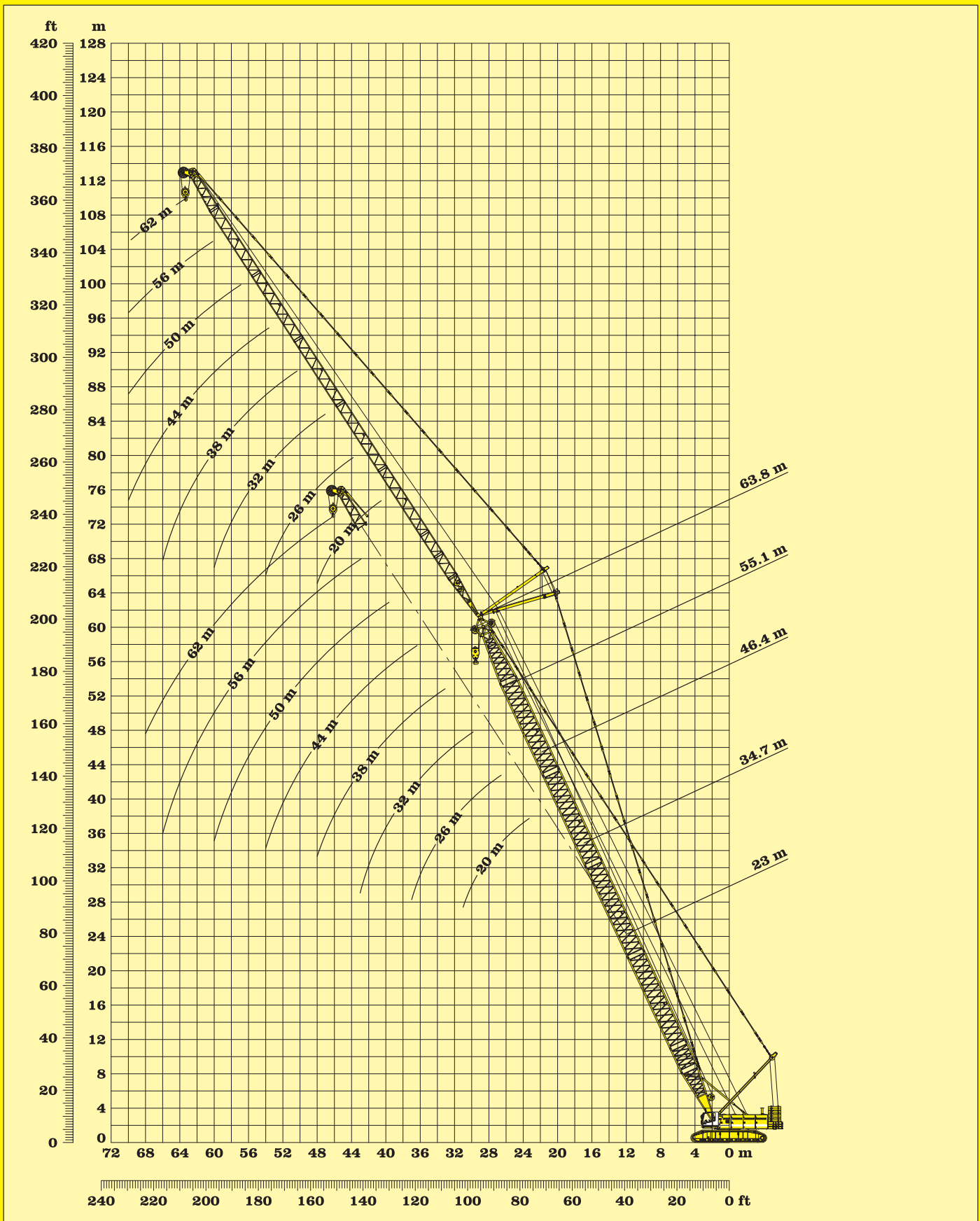
Main boom (HPT)

63.8 m

Capacities in metric tons with luffing jib (NDL)								
Jib length between 20 m and 62 m								
75.3 t counterweight + 27 t carbody counterweight								
Jib (NDL)	20m	26m	32m	38m	44m	50m	56m	62m
Radius in (m)	t	t	t	t	t	t	t	t
27	21.1							
28	20.3							
29	19.6	18.5						
30	19.0	18.0						
31	18.4	17.4						
32	17.8	16.9	16.1					
33	17.3	16.4	15.6					
34	16.7	15.9	15.1	14.4				
35	16.2	15.4	14.7	13.9				
36	15.8	14.9	14.2	13.5	12.5			
37	15.3	14.5	13.8	13.1	12.3			
38	14.9	14.1	13.4	12.7	11.9	11.0		
39		13.7	13.0	12.4	11.6	10.9		
40		13.4	12.7	12.0	11.2	10.6		
41		13.0	12.3	11.7	10.9	10.3	9.6	
42		12.7	12.0	11.4	10.6	10.0	9.3	
43		12.4	11.7	11.1	10.3	9.7	9.0	7.5
44			11.4	10.8	10.0	9.4	8.8	7.5
45			11.1	10.5	9.8	9.1	8.5	7.5
46			10.8	10.2	9.5	8.9	8.3	7.5
47			10.6	10.0	9.2	8.6	8.0	7.3
48			10.3	9.7	9.0	8.4	7.8	7.1
49			10.1	9.5	8.8	8.2	7.6	6.9
50				9.2	8.5	7.9	7.4	6.7
51				9.0	8.3	7.7	7.1	6.5
52				8.8	8.1	7.5	6.9	6.3
53				8.6	7.9	7.3	6.8	6.1
54				8.4	7.7	7.1	6.6	5.9
55				8.2	7.5	7.0	6.4	5.7
56					7.3	6.8	6.2	5.6
57					7.2	6.6	6.0	5.4
58					7.0	6.4	5.9	5.2
59					6.8	6.3	5.7	5.1
60					6.7	6.1	5.6	4.9
61					6.5	6.0	5.4	4.8
62						5.8	5.3	4.6
63						5.7	5.1	4.5
64						5.5	5.0	4.4
65						5.4	4.9	4.2
66						5.3	4.7	4.1
67						5.1	4.6	4.0
68							4.5	3.9
69							4.4	3.8
70							4.2	3.6
71							4.1	3.5
72							4.0	3.4
Reeving	4	3	3	2	2	2	2	2

Above lift chart is for reference only. For actual lift duty please refer to lift chart in operator's cab or manual.

Lifting capacities - luffing jib main boom 75°



Working range - luffing jib main boom 65°

Main boom (HPT)

23 m

Main boom (HPT)

34.7 m

Capacities in metric tons with luffing jib (NDL) Jib length between 20 m and 62 m 75.3 t counterweight + 27 t carbody counterweight								
Jib (NDL)	20m	26m	32m	38m	44m	50m	56m	62m
Radius in (m)	t	t	t	t	t	t	t	t
24	33.2							
25	31.6							
26	30.1							
27	28.7	28.4						
28	27.4	27.1						
29	26.2	26.0						
30	25.1	24.9	24.6					
31	24.1	23.9	23.7					
32		23.0	22.7					
33		22.1	21.9	21.4				
34		21.3	21.1	20.8				
35		20.5	20.3	20.1				
36		19.8	19.6	19.4	18.7			
37		19.1	19.0	18.7	18.4			
38			18.3	18.1	17.7			
39			17.7	17.5	17.1			
40			17.2	16.9	16.6	16.1		
41			16.6	16.4	16.1	15.8		
42			16.1	15.9	15.6	15.3		
43			15.6	15.4	15.1	14.8	12.1	
44				14.9	14.6	14.4	12.1	
45				14.5	14.2	13.9	12.1	
46				14.1	13.8	13.5	11.9	8.8
47				13.7	13.4	13.1	11.8	8.8
48				13.3	13.0	12.8	11.7	8.8
49					12.7	12.4	11.6	8.7
50					12.3	12.1	11.5	8.7
51					12.0	11.7	11.4	8.6
52					11.7	11.4	11.1	8.6
53					11.4	11.1	10.8	8.5
54					11.0	10.8	10.5	8.4
55						10.5	10.3	8.3
56						10.3	10.0	8.2
57						10.0	9.7	8.2
58						9.7	9.5	8.1
59						9.5	9.2	8.0
60						9.2	9.0	8.0
61							8.8	7.9
62							8.6	7.8
63							8.4	7.8
64							8.1	7.7
65							7.9	7.6
66							7.7	7.5
67								7.3
68								7.1
69								6.9
70								6.7
71								6.6
72								6.4
Reeving	5	4	3	3	2	2	2	2

Capacities in metric tons with luffing jib (NDL) Jib length between 20 m and 62 m 75.3 t counterweight + 27 t carbody counterweight								
Jib (NDL)	20m	26m	32m	38m	44m	50m	56m	62m
Radius in (m)	t	t	t	t	t	t	t	t
29	24.2							
30	23.2							
31	22.3							
32	21.4	21.0						
33	20.6	20.3						
34	19.8	19.5						
35	19.1	18.8	18.5					
36	18.4	18.2	17.9					
37		17.5	17.3					
38		17.0	16.7	16.3				
39		16.4	16.1	15.8				
40		15.9	15.6	15.3				
41		15.4	15.1	14.8	14.2			
42		14.9	14.7	14.4	14.0			
43			14.2	13.9	13.5			
44			13.8	13.5	13.1	12.4		
45			13.4	13.1	12.7	12.3		
46			13.0	12.7	12.4	12.0		
47			12.6	12.4	12.0	11.7		
48				12.0	11.7	11.4	10.7	
49				11.7	11.3	11.0	10.5	
50				11.4	11.0	10.7	10.2	
51				11.1	10.7	10.4	9.9	8.2
52				10.8	10.4	10.1	9.7	8.2
53				10.5	10.2	9.9	9.4	8.2
54					9.9	9.6	9.2	8.2
55					9.6	9.3	9.0	8.1
56					9.4	9.1	8.7	8.1
57					9.1	8.9	8.5	7.9
58					8.9	8.6	8.3	7.7
59					8.7	8.4	8.1	7.5
60						8.2	7.9	7.3
61						8.0	7.7	7.1
62						7.8	7.5	6.9
63						7.6	7.3	6.7
64						7.4	7.1	6.6
65						7.2	6.9	6.4
66							6.7	6.3
67							6.6	6.1
68							6.4	5.9
69							6.2	5.8
70							6.0	5.7
71							5.9	5.5
72								5.4
73								
74								
75								
76								
77								
Reeving	5	4	3	3	2	2	2	2

Above lift chart is for reference only. For actual lift duty please refer to lift chart in operator's cab or manual.

Lifting capacities - luffing jib main boom 65°

Main boom (HPT)

46.4 m

Main boom (HPT)

55.1 m

Capacities in metric tons with luffing jib (NDL) Jib length between 27 m and 62 m 75.3 t counterweight + 20 t carbody counterweight								
Jib (NDL)	20m	26m	32m	38m	44m	50m	56m	62m
Radius in (m)	t	t	t	t	t	t	t	t
34	17.6							
35	17.1							
36	16.5							
37	15.9	15.2						
38	15.4	14.8						
39	14.9	14.4						
40	14.4	14.0	13.3					
41	13.9	13.6	12.9					
42		13.2	12.5					
43		12.8	12.2	11.5				
44		12.4	11.9	11.2				
45		12.0	11.6	10.9				
46		11.7	11.3	10.6	9.8			
47		11.3	11.0	10.4	9.6			
48			10.7	10.1	9.4			
49			10.5	9.8	9.1	8.3		
50			10.2	9.6	8.9	8.3		
51			9.9	9.4	8.6	8.0		
52			9.6	9.1	8.4	7.8		
53				8.9	8.2	7.6	7.0	
54				8.7	8.0	7.4	6.8	
55				8.5	7.8	7.2	6.6	
56				8.3	7.6	7.0	6.4	5.8
57				8.1	7.4	6.8	6.3	5.6
58				7.9	7.2	6.7	6.1	5.4
59					7.1	6.5	5.9	5.3
60					6.9	6.3	5.8	5.1
61					6.7	6.2	5.6	5.0
62					6.6	6.0	5.5	4.8
63					6.4	5.9	5.3	4.7
64					6.3	5.7	5.2	4.5
65						5.6	5.0	4.4
66						5.4	4.9	4.3
67						5.3	4.8	4.1
68						5.2	4.6	4.0
69						5.0	4.5	3.9
70						4.9	4.4	3.8
71							4.3	3.7
72							4.2	3.6
Reeving	4	4	3	2	2	2	2	2

Capacities in metric tons with luffing jib (NDL) Jib length between 27 m and 62 m 75.3 t counterweight + 20 t carbody counterweight								
Jib (NDL)	20m	26m	32m	38m	44m	50m	56m	62m
Radius in (m)	t	t	t	t	t	t	t	t
37	13.5							
38	13.1							
39	12.7							
40	12.3	11.4						
41	12.0	11.2						
42	11.7	10.9						
43	11.3	10.6						
44	11.0	10.3	9.6					
45	10.7	10.0	9.4					
46		9.8	9.1					
47		9.5	8.9	8.3				
48		9.3	8.7	8.0				
49		9.0	8.4	7.8				
50		8.8	8.2	7.6	6.9			
51			8.0	7.4	6.7			
52			7.8	7.2	6.5			
53			7.6	7.0	6.3	5.7		
54			7.4	6.8	6.1	5.6		
55			7.2	6.7	6.0	5.4		
56			7.1	6.5	5.8	5.2	4.6	
57				6.3	5.7	5.1	4.5	
58				6.2	5.5	4.9	4.4	
59				6.0	5.3	4.8	4.2	3.4
60				5.9	5.2	4.6	4.1	3.4
61				5.7	5.1	4.5	3.9	3.3
62				5.6	4.9	4.4	3.8	3.2
63					4.8	4.2	3.7	3.1
64					4.7	4.1	3.6	2.9
65					4.5	4.0	3.5	2.8
66					4.4	3.9	3.3	2.7
67					4.3	3.8	3.2	2.6
68					4.2	3.7	3.1	2.5
69						3.5	3.0	2.4
70						3.4	2.9	2.3
71						3.3	2.8	2.2
72						3.2	2.7	2.1
73								
74								
75								
Reeving	4	3	3	2	2	2	2	2

Above lift chart is for reference only. For actual lift duty please refer to lift chart in operator's cab or manual.

**Lifting capacities - luffing jib
main boom 65°**

Main boom (HPT)

63.8 m

Capacities in metric tons with luffing jib (NDL)								
Jib length between 27 m and 62 m								
75.3 t counterweight + 27 t carbody counterweight								
Jib (NDL)	20m	26m	32m	38m	44m	50m	56m	62m
Radius in (m)	t	t	t	t	t	t	t	t
41	9.5							
42	9.2							
43	8.9							
44	8.7	7.9						
45	8.4	7.7						
46	8.2	7.5						
47	8.0	7.3	6.6					
48	7.8	7.1	6.5					
49		6.9	6.3					
50		6.7	6.1	5.4				
51		6.5	5.9	5.3				
52		6.3	5.8	5.2				
53		6.1	5.6	5.0				
54		6.0	5.4	4.9	4.2			
55			5.3	4.7	4.0			
56			5.1	4.6	3.9			
57			5.0	4.4	3.8	3.2		
58			4.9	4.3	3.6	3.1		
59			4.7	4.2	3.5	2.9		
60			4.6	4.1	3.4	2.8	2.2	
61				3.9	3.3	2.7	2.2	
62				3.8	3.2	2.6	2.1	
63				3.7	3.1	2.5	2.0	1.3
64				3.6	3.0	2.4	1.9	1.2
65				3.5	2.9	2.3	1.8	1.1
66				3.4	2.8	2.2	1.7	1.0
67					2.7	2.1	1.6	
68					2.6	2.0	1.5	
69					2.5	2.0	1.4	
70					2.4	1.9	1.3	
71					2.3	1.8	1.3	
72						1.7	1.2	
Reeving	4	3	3	2	2	2	2	2

Above lift chart is for reference only. For actual lift duty please refer to lift chart in operator's cab or manual.

Lifting capacities - luffing jib main boom 65°



Engine

Water cooled, V-8-cylinder Liebherr diesel engine, turbo charged with intercooler, model D 9408 TI-E, power rating according to ISO 9249, 400 kW (536 hp) at 1900 rpm. The Litronic power limiter prevents overload of the diesel engine through the hydraulic system. The cooling system is regulated thermostatically which saves energy and reduces the noise emission. Fuel Tank: 2x 460 l capacity with continuous level indicator and reserve warning at 40 l.



Hydraulic system

The main pumps are operated by a distributor gearbox. Axial piston displacement pumps work in closed and open circuits supplying oil only when needed (flow control on demand). To minimize peak pressure an automatically working pressure cut off is integrated. This spares pumps and saves energy. Winch 1 and 2: Axial piston displacement pumps (swash plate design) with 321 l/min each. Crawlers: Axial piston displacement pumps (swash plate design) with 2x 300 l/min. Swing gear: Axial piston displacement pump (swash plate design) with 321 l/min. Boom hoist: Axial piston displacement pump (swash plate design) with 300 l/min. Max. working pressure: 350 bar Hydraulic oil tank capacity: 940 l The hydraulic oil is cleaned through electronically controlled pressure and return filters. Possible contamination is signaled in the cabin. The use of synthetic environmentally friendly oils is possible.



Winches

Winch options:
Line pull (nom. load) 150 kN
Rope diameter : 28 mm
Drum diameter : 730 mm
Rope speed m/min on average 0 - 115
Rope capacity 7 layers 570 m
The winches are outstanding in their compact design and easy assembly. Propulsion is via a planetary gearbox in oil bath. Load support by the hydraulic system; additional safety factor provided by a spring loaded, multi-disc holding brake. The main winches use pressure controlled, variable flow hydraulic motors. This system features sensors that automatically adjust oil flow to provide max. winch speed depending on load. Option - winch with freefall system: Clutch and braking functions on the freefall system are provided by a compact designed, low wear and maintenance free multi-disc brake.



Equipment

- Main boom HPT, max. length 96.2 m
- Jib NDL, max. length 62.0 m
- Jib - pendants
- Jib - luffing winch with ropes
- Auxiliary jib 30 t lifting capacity
- Ropes for main winches
- Hook
- Heavy lift equipment available upon request



Swing drive

Consists of rollerbearing with external teeth for lower tooth flank pressure, 2 swing drives with fixed axial piston hydraulic motor, spring loaded and hydraulically released multi-disc holding brake, planetary gearbox and pinion. Free swing with hydraulic moment control reduces wear to a minimum, because rotation moment is sustained through the hydraulic system by the Diesel engine. A multi-disc holding brake acts automatically at zero swing motion. Swing speed from 0 - 1.84 rpm continuously variable.



Crawler

Propulsion through axial piston motor, hydraulically released spring loaded multi-disc brake, crawler tracks, hydraulic chain tensioning device.
Flat track shoes 1200 mm
Drive speed 0 - 1.3 km/h



Control

The control system - developed and manufactured by Liebherr - is designed to withstand extreme temperature and the many heavy-duty construction tasks for which this crane has been designed. Complete machine operating data are displayed on a high resolution monitor screen. To ensure clarity of the information on display, different levels of data are shown in enlarged lettering and symbols. Control and monitoring of the sensors are also handled by this high technology system. Error indications are automatically displayed on the monitor in English. The crane is equipped with proportional control for all movements, which can be carried out simultaneously. An additional option is also the so-called "Redundant" control system, which allows restricted operation of the machine in the event of a failure on the electronic base control or its sensors. The crane is operated with 2 multi-directional joysticks, right for winch I and boom hoist drive, left for winch II and slewing gear. Crawler control is actuated with the two central foot pedals. Additionally, hand levers can be attached to the pedals.

Options: ● MDE: Machine data recording
● PDE: Process data recording
● GSM-modem



Boom luffing winch

Drum with internally located planetary gearbox, axial piston hydraulic motor and hydraulically released spring loaded multi-disc brake. Max. line pull: 150 kN
Rope diameter: 24 mm. Average line speed: 0 - 85 m/min



Jib luffing winch

Drum with internally located planetary gearbox, axial piston hydraulic motor and hydraulically released spring loaded multi-disc brake.
Max. line pull: 105 kN
Rope diameter: 20 mm
Average line speed: 0 - 115 m/min



Noise emission

Special sound proofing results in a very low noise pressure level of 78 dB (A) at 16 m radius.