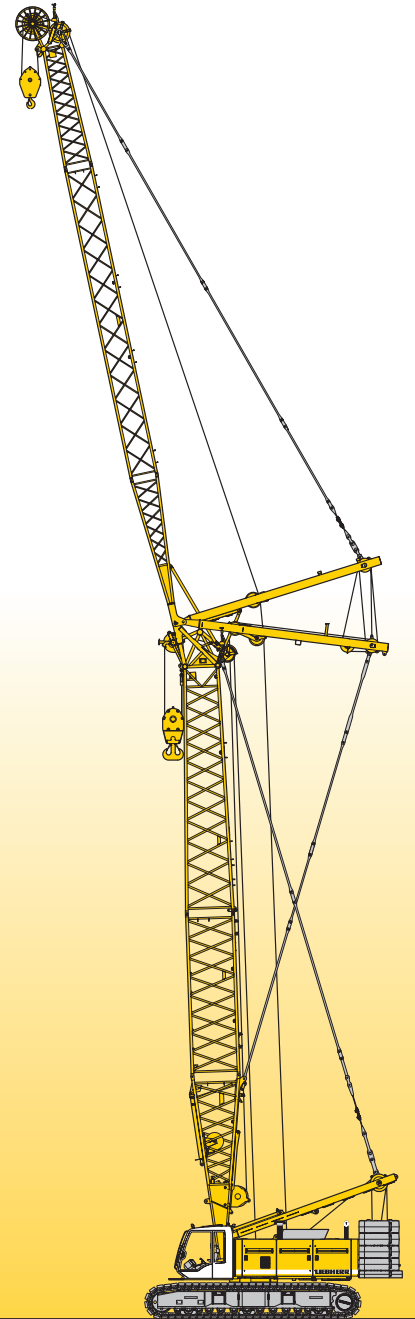


Technical data
Hydraulic lift crane

LR 1130
Litronic®

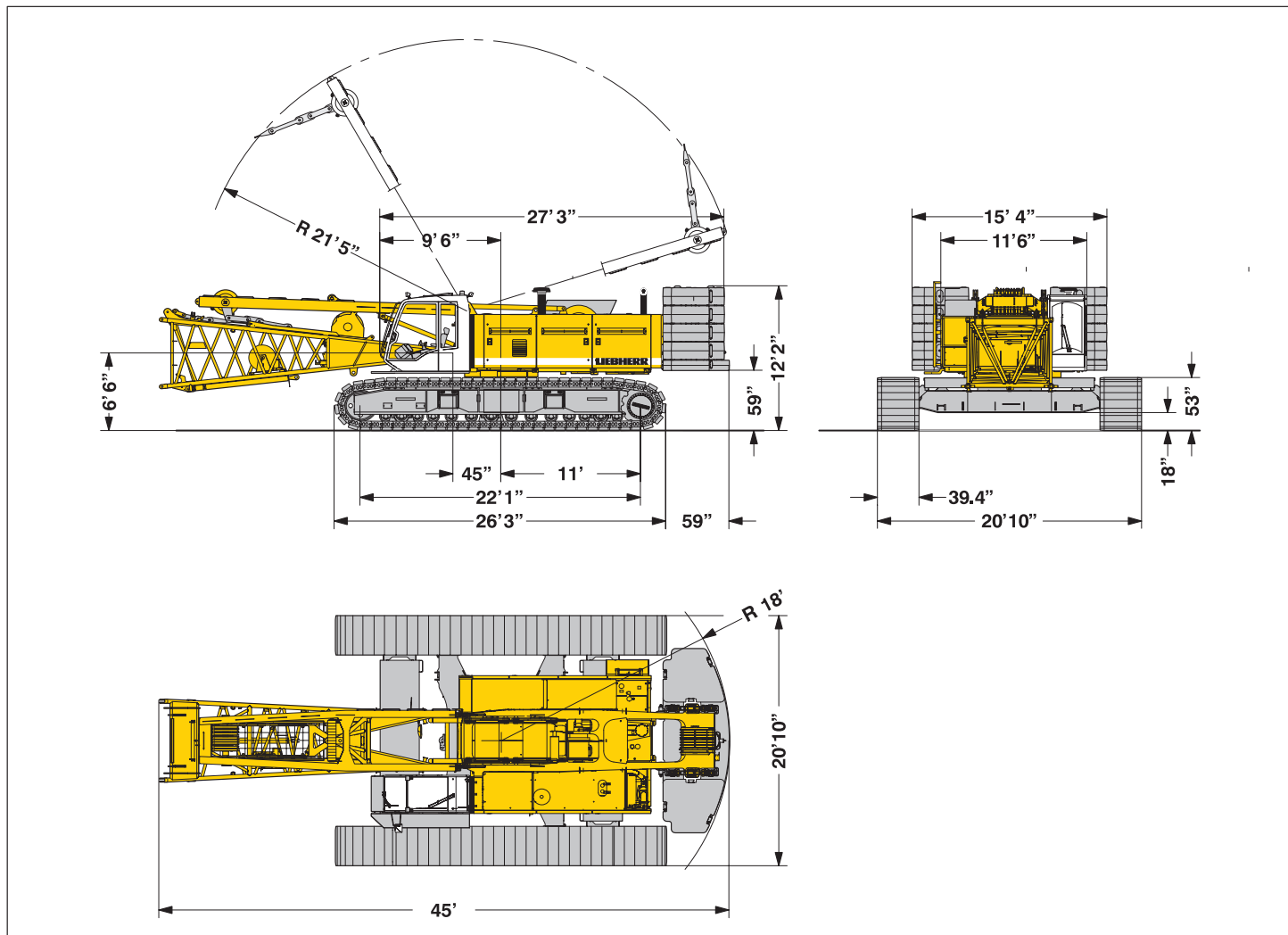
Complies with ANSI B 30.5



LIEBHERR

Dimensions

Basic machine with undercarriage



Operating weight

The operating weight includes the basic machine with crawlers, 2 main winches 26,500 lbs and 56 ft main boom, consisting of A-frame, boom foot (23 ft), boom head (33 ft), 111,300 lbs basic counterweight, 33,100 lbs carbody counterweight and 308,650 lbs hook block.

Total weight _____ appr. 305,300 lbs

Ground pressure

Ground bearing pressure _____ 14.6 psi

Equipment

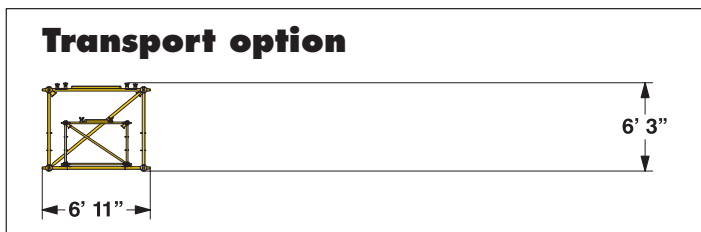
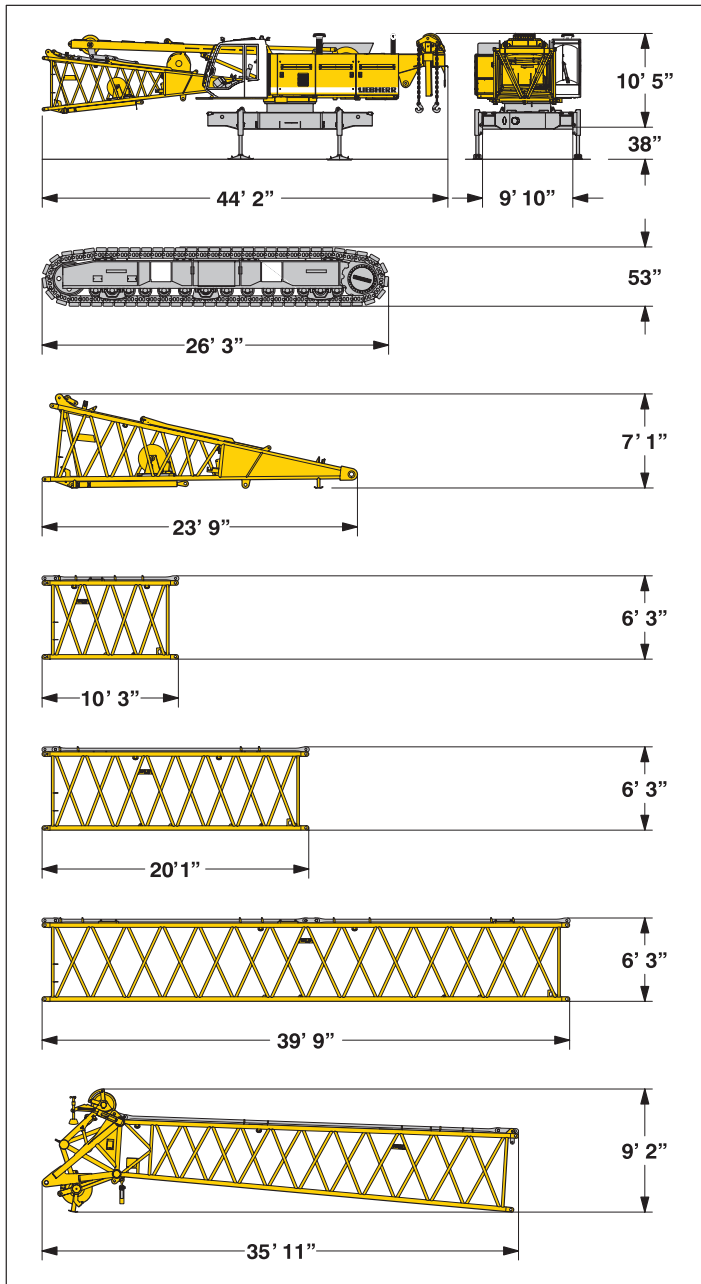
Main boom (No. 2017.xx) max. length _____ 262 ft
 High reach (No. 2017.xx and 1309.xx) _____ 305 ft
 Luffing jib (No. 1309.xx) max. length _____ 258 ft
 Max. combination _____ boom 154 ft and luffing jib 258 ft
 Fixed jib (No. 0806.xx) _____ 36 ft – 105 ft
 Auxiliary jib 53,000 lbs lifting capacity (optional 79,100 lbs)

Remarks

1. The lifting capacities stated are valid for lifting operation only (corresponds with crane classification according to F.E.M. 1.001, crane group A1)
2. Crane standing on firm, horizontal ground.
3. The weight of the lifting device (hoisting ropes, hook block, shackle etc.) must be deducted from the gross lifting capacity to obtain a net lifting value.
4. Additional equipment on boom (e.g. boom walkways, auxiliary jib) must be deducted to get the net lifting capacity.
5. For max. wind speed please refer to lift chart in operator's cab or manual.
6. Working radii are measured from centre of swing and under load.
7. The lifting capacities are valid for 360 degrees of swing.
8. Calculation of stability under load is based on DIN 15019 / part 2 / chart 1 and ISO 4305 Table 1 + 2, tipping angle 4°.
9. The structures are calculated according to F.E.M. 1.001 – 1998 (EN 13001-2 / 2004).
10. ANSI B 30.5

Transport dimensions and weights

Basic machine and boom (No.2017.xx)



*) Including pendant straps

Basic machine

with A-frame, 2x 26,500 lbs crane winches and boom foot, without hoisting ropes, basic counterweight and crawlers

Width	11'6"
Weight in lbs	70,550

Crawler 2x

Flat track shoes	(option 47.2")	39.4"
Width	55"	
Weight in lbs	36,400	

Boom foot (No. 2017.24) without winches

Width	7'10"
Weight in lbs	5,300

Boom section (No. 2017.21) 10 ft

Width	6'11"
Weight in lbs*	1,450

Boom section (No. 2017.21) 20 ft

Width	6'11"
Weight in lbs*	2,300

Boom section (No. 2017.21) 40 ft

Width	6'11"
Weight in lbs*	4,200

Boom head (No. 2017.21)

Width	6'11"
Weight in lbs*	6,950

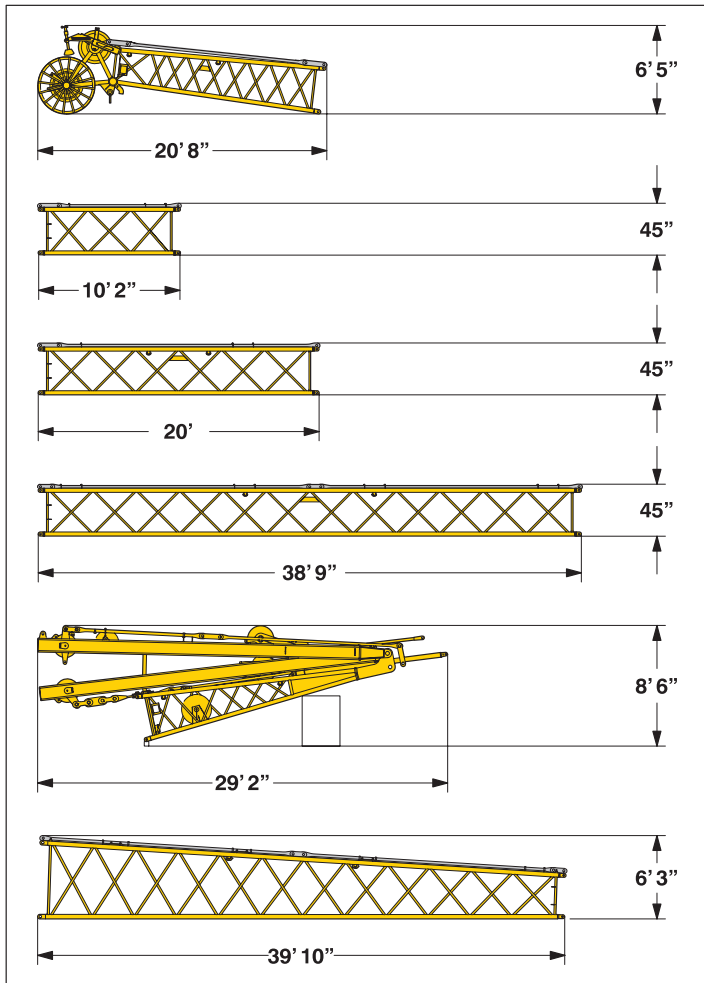
Boom - luffing jib transport option

40 ft boom – and 38 ft jib extension
20 ft boom – and 20 ft jib extension

(No. 2017.xx/1309.xx)	20 ft/20 ft	40 ft/38 ft
Width	20'1"	40'
Weight in lbs*	3,450	6,300

Transport dimensions and weights

Luffing jib (No. 1309.xx)



Luffing jib head (No. 1309.22)

Width	59"
Weight in lbs*	2,500

Luffing jib section (No. 1309.20) **10 ft**

Width	59"
Weight in lbs*	930

Luffing jib section (No. 1309.20) **20 ft**

Width	59"
Weight in lbs*	1,150

Luffing jib section (No. 1309.20) **38 ft**

Width	59"
Weight in lbs*	2,100

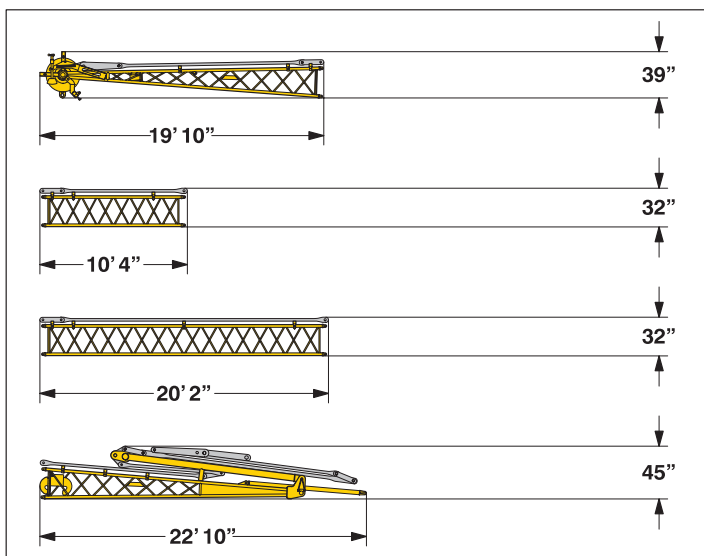
Luffing jib foot with A-frames (No. 1309.22)

Width	57"
Weight in lbs*	10,600

Boom section tapered (No. 2017/1309.21) **40 ft**

Width	6'11"
Weight in lbs*	3,000

Fixed jib (No. 0806.xx)



Fixed jib head (No. 0806.16)

Width	45"
Weight in lbs*	980

Fixed jib section (No. 0806.15) **10 ft**

Width	38"
Weight in lbs*	245

Fixed jib section (No. 0806.15) **20 ft**

Width	38"
Weight in lbs*	430

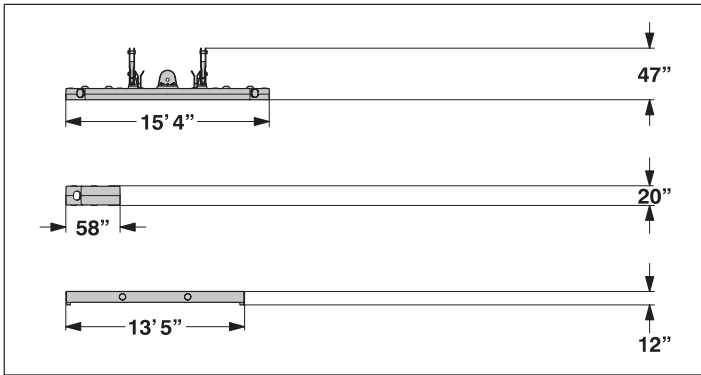
Fixed jib foot with A-frame (No. 0806.16)

Width	59"
Weight in lbs*	2,050

*) Including pendant straps

Transport dimensions and weights

Counterweights

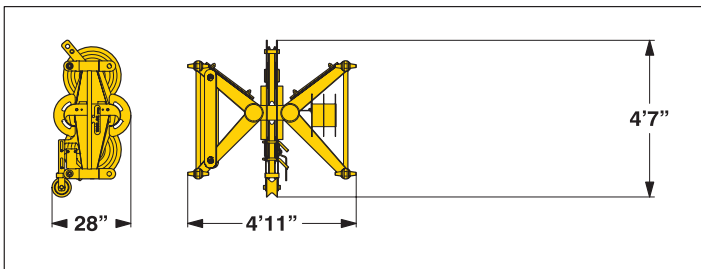


Counterweight	1x
Width	63"
Weight in lbs	21,400

Counterweight	8x
Width	54"
Weight in lbs	11,250

Carbody counterweight	2x
Width	45"
Weight in lbs	16,500

Mid fall (option)



Mid fall section (No. 1309.32)	14"
Width	28"
Weight in lbs	600

Hooks



353,000 lbs hook block - 7 sheaves	
Width	25" — 30" — 35"
Weight in lbs	3,300 — 4,960 — 6,610

220,500 lbs hook block - 5 sheaves	
Width	21" — 25" — 30"
Weight in lbs	2,900 — 4,000 — 5,070

88,200 lbs hook block - 1 sheave	
Width	12" — 16" — 20"
Weight in lbs	1,500 — 2,450 — 3,300

27,600 lbs single hook	
Width	16"
Weight in lbs	1,300

Technical description



Engine

Power rating according to ISO 9249, 322 HP at 2000 rpm
Engine type _____ Liebherr D 926 T1-E
Fuel tank _____ 219 gal capacity with continuous level indicator and reserve warning
Complies with EPA CARB II / TIER II / and 97/68 EC TIER II OFF-ROAD



Hydraulic system

A double axial displacement pump supplies the open loop hydraulic system, allowing all functions to be operated simultaneously.
To minimize peak pressure an automatic working pressure cut-off is integrated in the pump.
All filters are electronically monitored.
The use of synthetic environmentally friendly (biodegradable) oils is possible.
Working pressure _____ max. 5076 psi
Oil tank capacity _____ 172 gal



Luffing jib winch

Line pull _____ max. 23,150 lbs
Rope diameter _____ 20 mm
Jib luffing _____ 46 sec. from 15° to 78°



Boom winch

Line pull _____ max. 33,100 lbs
Rope diameter _____ 24 mm
Boom up _____ 96 sec. from 15° to 86°



Swing

Consists of rollerbearing with external teeth, swing drive with fixed axial piston hydraulic motor, spring loaded and hydraulically released multi-disc holding brake, planetary gearbox and pinion.
Free swing with hydraulic moment control reduces wear to a minimum. Alternatively the swing control can be changed to simulate closed loop speed control. Then a multi-disc holding brake acts automatically at zero swing motion.
Swing speed from 0 – 3.15 rpm continuously variable.



Main winches

Line pull (1st layer) _____ max. 38,600 lbs
Line pull (7th layer) _____ 26,500 lbs
Rope diameter _____ 26 mm
Drum diameter _____ 23 inch
Rope speed ft/min _____ 0 – 446
Rope capacity in 7 layers _____ 1600 ft

The winches are outstanding in their compact design and easy assembly. Propulsion is via a planetary gearbox in an oil bath. Load support by the hydraulic system; additional safety factor provided by a spring loaded, multi-disc holding brake.

The main winches use pressure controlled, variable flow hydraulic motors. This system features sensors that automatically adjust oil flow to provide max. winch speed depending on load.

Option – winch with freefall system:

Clutch and braking functions on the freefall system are provided by a compact designed, low wear and maintenance free multi-disc brake.



Crawlers

Propulsion through axial piston motor, hydraulically released spring loaded multi-disc brake, crawler tracks, hydraulic chain tensioning device.

Flat track shoes _____ 39.4 inch
Drive speed _____ 0 – 1.3 mph



Control

The control system – developed and manufactured by Liebherr – is designed to withstand extreme environmental conditions such as temperature, vibration and electromagnetic interference and to meet all requirements that are needed in heavy duty crane operation.

Complete machine operating data are shown on a high resolution display. Standard operational information is displayed by means of graphical symbols, fault indications are displayed in plain text (more than 10 languages available).

The cranes are equipped with proportional control for all main movements, which can be carried out simultaneously.

A backup control system, that allows limited use of the crane is standard. This feature increases the safety and availability of the crane even further.

The crane is operated with 2 multi-directional joysticks, the right for winch I and boom, the left for winch II and swing control.

Option:

Bi-directional double T-levers for simultaneous boom and luffing jib operation.

The crawlers are activated by the two central foot pedals. Additionally, hand levers can be attached to the pedals.



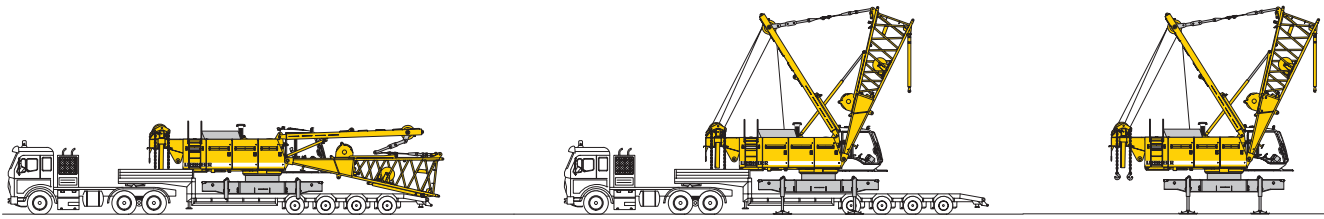
Noise emission

Noise emissions correspond with 2000/14/EC directive on noise emission by equipment used outdoors.

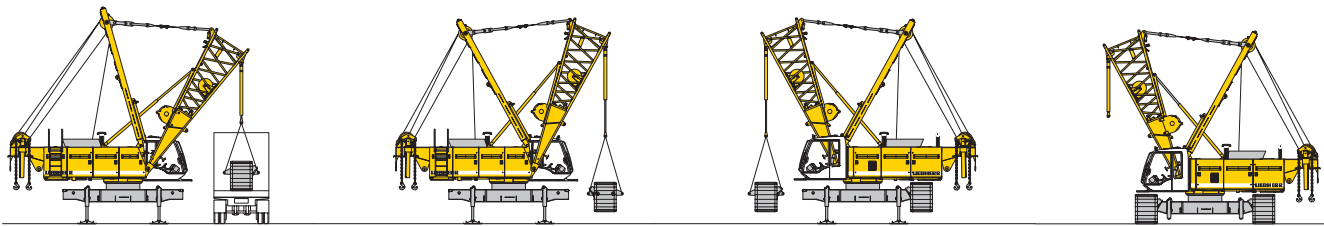
Boom combinations



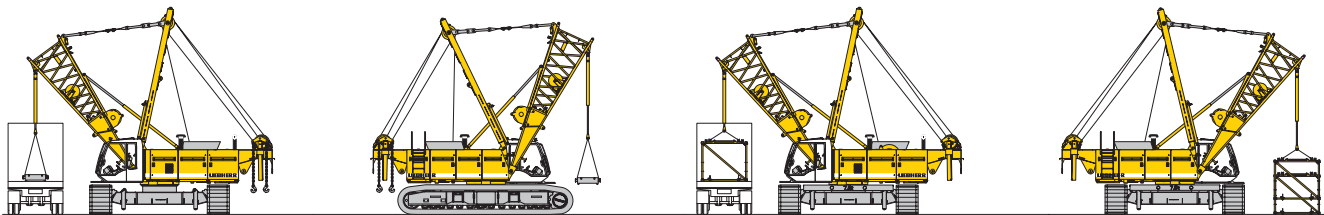
Self assembly system



Unloading of basic machine

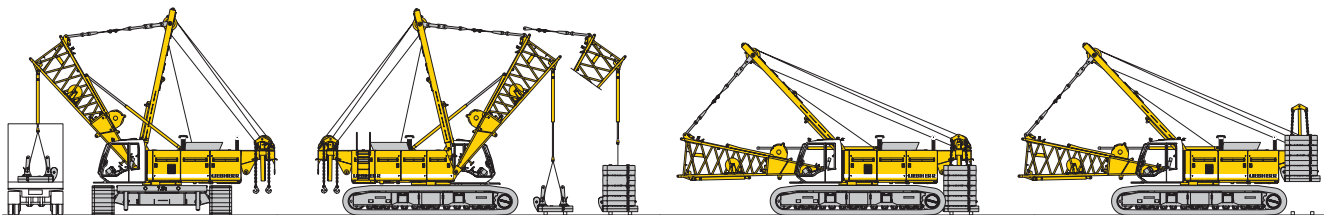


Unloading and assembly of crawlers

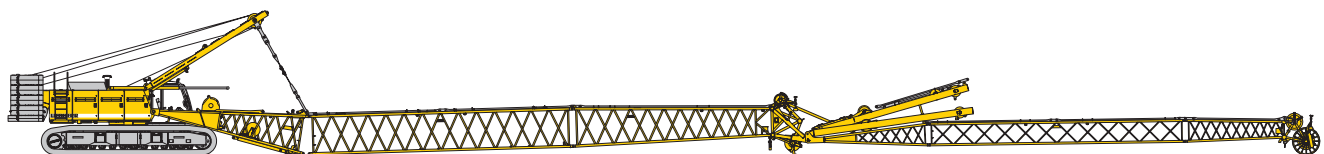


Unloading and assembly of carbody counterweight

Unloading and assembly of boom

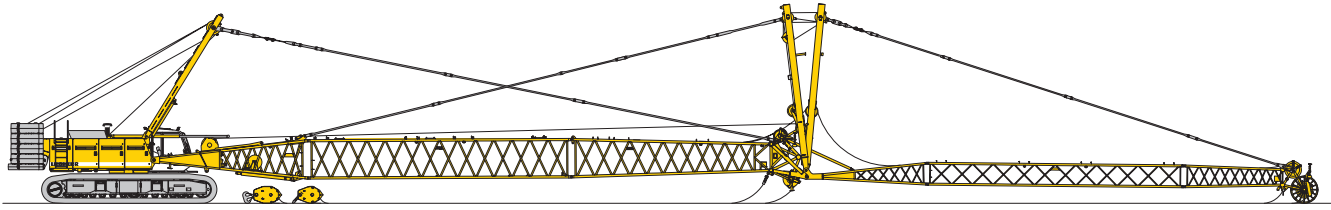


Unloading and assembly of counterweight



Assembly of boom

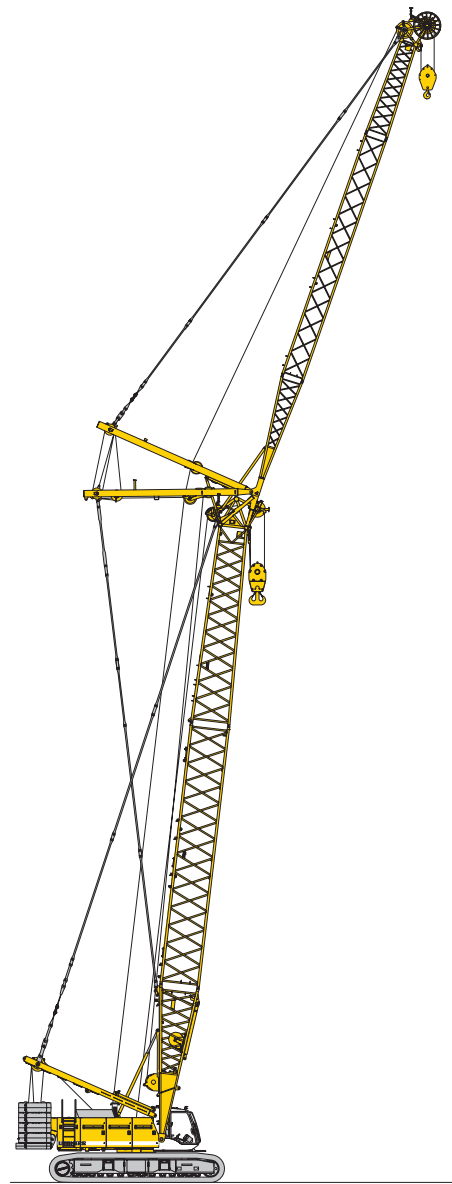
Erecting of main boom to working position



Reeving of hoist and jib ropes

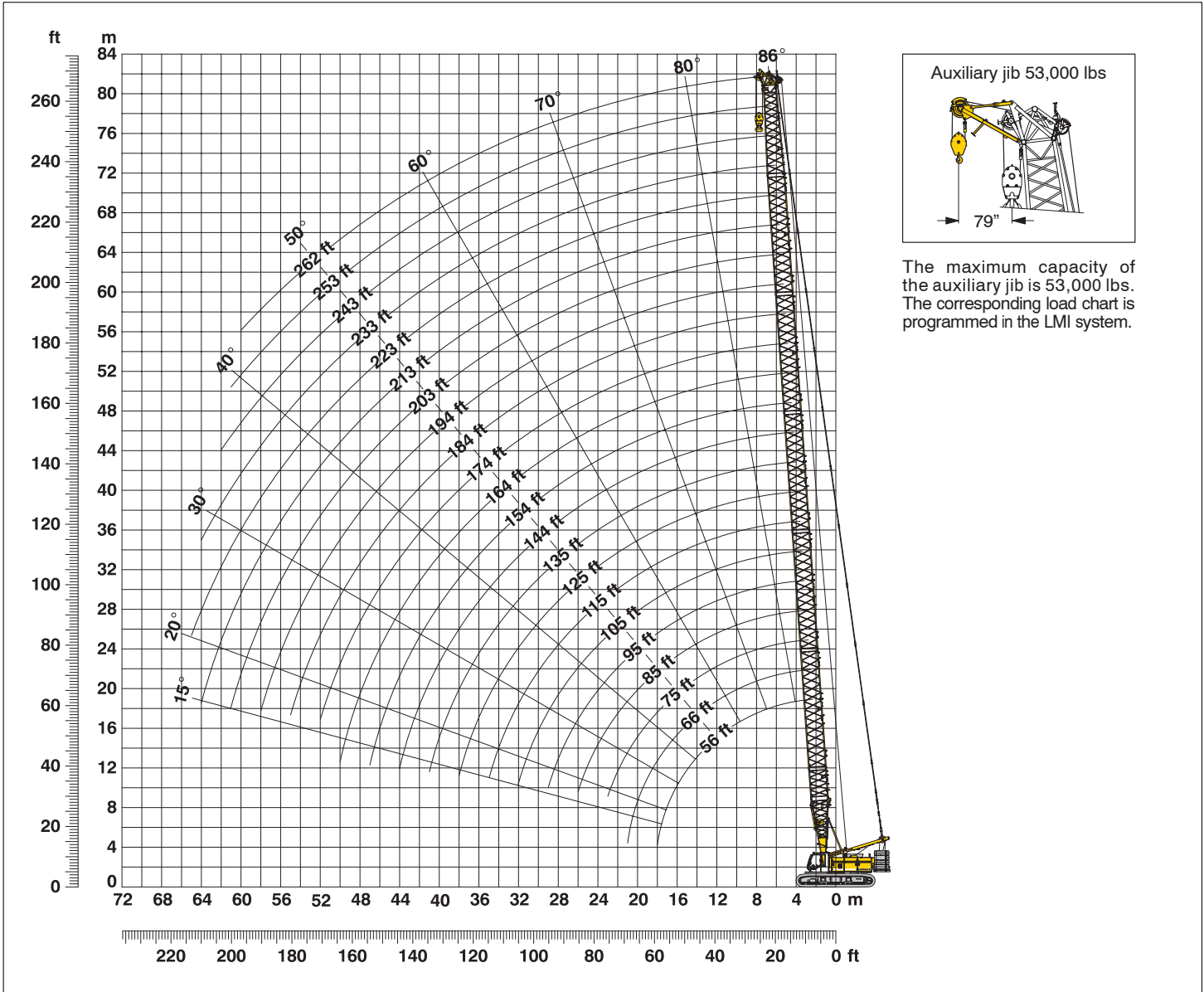


Erecting of main boom and luffing jib



Working position

Working range - main boom (No. 2017.xx) **86° - 15°**
max. 111,300 lbs counterweight and 33,100 lbs carbody counterweight



Main boom configuration (Table 1 – No. 2017.xx)

Configuration for boom lengths (56 ft – 262 ft)

Length	Amount of boom extensions																					
	1	1	1	1	1	1	1	1	1	1	1	1	1	1	1	1	1	1	1	1		
Boom foot 23 ft	1	1	1	1	1	1	1	1	1	1	1	1	1	1	1	1	1	1	1	1		
Boom insert 10 ft*		1		1		1		1		1		1		1		1		1		1		
Boom insert 20 ft*			1	1		1	1		1	1		1	1		1	1		1	1			
Boom insert 40 ft*					1	1	1	1	2	2	2	2	3	3	3	3	4	4	4	4	5	5
Boom head 33 ft*	1	1	1	1	1	1	1	1	1	1	1	1	1	1	1	1	1	1	1	1	1	1
Boom length (ft)	56	66	75	85	95	105	115	125	135	144	154	164	174	184	194	203	213	223	233	243	253	262

*Actual lengths of boom sections are metric (e.g. 3 m, 6 m, 10 m, 12 m). The figures shown above are approximate conversions to feet.

Lift chart for main boom (No. 2017.xx)

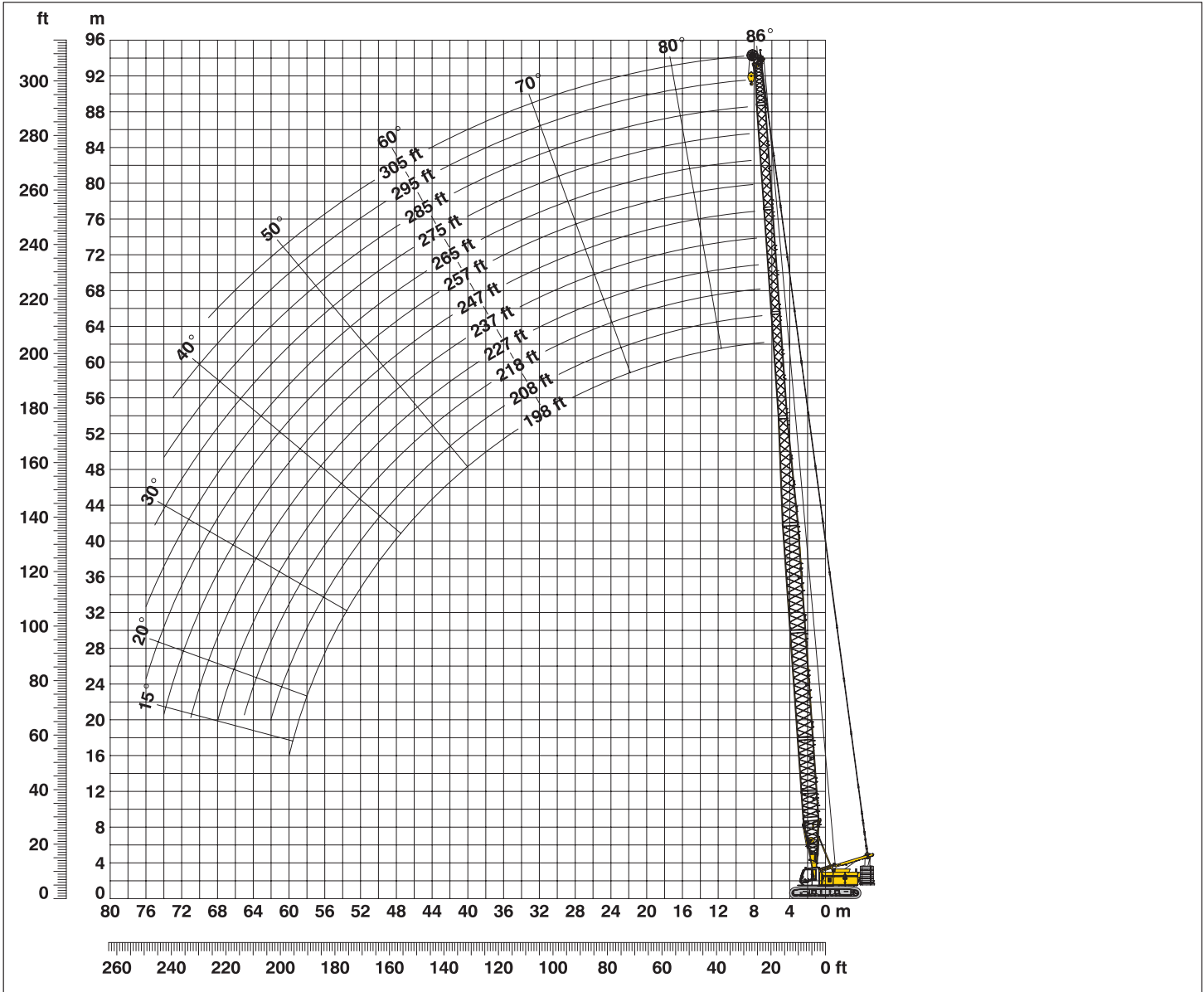
Capacities in 1000 lbs for boom lengths from (56 ft – 262 ft) – with 26,500 lbs winches counterweight 111,300 lbs and carbody counterweight 33,100 lbs

Radius	Boom length in (ft)												Radius	
	56	66	85	105	125	144	164	184	203	223	243	262		
(ft)	lbs	lbs	lbs	lbs	lbs	lbs	lbs	lbs	lbs	lbs	lbs	lbs	lbs	(ft)
11.6		302.5												11.6
15	266.5	283.3	245.2	207.1										15
20	208.8	217.2	196.5	186.9	161.5	139.5	119.8	100.1						20
25	168.2	174.0	166.4	164.2	146.1	127.4	113.2	97.9	83.3	68.5	57.2			25
30	147.3	140.1	141.6	139.2	135.2	116.9	106.8	94.8	80.7	66.8	56.5	46.3		30
35	119.0	119.1	119.0	118.0	115.7	109.0	99.2	91.5	77.5	65.2	55.2	45.1		35
40	98.7	98.8	98.6	98.5	98.2	94.7	94.1	89.1	75.2	63.0	53.7	44.2		40
45	84.0	84.1	83.9	83.8	83.4	83.1	82.7	82.3	73.5	61.2	50.6	42.5		45
50	72.9	72.9	72.8	72.6	72.3	71.9	71.5	70.8	68.9	59.9	49.5	41.1		50
55	64.1	64.2	64.1	63.9	63.5	63.2	62.7	62.3	61.8	56.7	48.5	40.0		55
60		57.2	57.1	56.9	56.5	56.1	55.6	55.2	54.7	53.8	46.7	38.7		60
65		51.3	51.3	51.1	50.7	50.3	49.9	49.4	48.9	48.4	45.1	37.2		65
70			46.5	46.3	45.9	45.5	45.0	44.6	44.0	43.5	43.0	35.8		70
80			38.8	38.7	38.3	37.9	37.4	36.9	36.3	35.8	35.3	33.5		80
85			35.7	35.6	35.2	34.8	34.3	33.8	33.3	32.8	32.2	31.7		85
90				32.9	32.5	32.1	31.6	31.1	30.6	30.0	29.5	28.9		90
100				28.4	28.0	27.6	27.1	26.6	26.2	25.7	25.1	24.5		100
110					24.5	24.1	23.6	23.1	22.5	22.0	21.4	20.9		110
120					21.4	21.1	20.6	20.1	19.5	19.0	18.4	17.9		120
130						18.6	18.1	17.6	17.0	16.5	15.9	15.4		130
140						16.4	16.0	15.5	14.9	14.4	13.8	13.2		140
150							14.1	13.7	13.1	12.6	12.0	11.4		150
160							12.5	12.1	11.5	11.0	10.4	9.8		160
170								10.7	10.1	9.6	9.0	8.4		170
180								9.4	8.9	8.4	7.8	7.2		180
190									7.8	7.3	6.7	6.1		190
200									6.7	6.3	5.7	5.1		200
210										5.4	4.8	4.2		210
215										4.9	4.4	3.8		215
220											4.0	3.4		220
225											3.6	3.0		225
230											3.2	2.7		230
235											2.8	2.3		235

Above lift chart is for reference only. For actual lift duty please refer to lift chart in operator's cab or manual.

L - boom high reach (No. 2017 / 1309.xx) **198 ft - 305 ft**

Working range **86° - 15°**



L - boom configuration with 131 ft main boom (No. 2017.xx / No. 1309.xx)

Configuration for L - boom lengths (198 ft - 323 ft)

	Length	Amount of boom and luffing jib extensions											
		1	1	1	1	1	1	1	1	1	1	1	1
Boom foot	23 ft	1	1	1	1	1	1	1	1	1	1	1	1
Boom insert	10 ft*	1	1	1	1	1	1	1	1	1	1	1	1
Boom insert	20 ft*	1	1	1	1	1	1	1	1	1	1	1	1
Boom insert	40 ft*	2	2	2	2	2	2	2	2	2	2	2	2
Tapered	40 ft*	1	1	1	1	1	1	1	1	1	1	1	1
Luffing insert	10 ft*	1		1		1		1		1		1	
Luffing insert	20 ft*		1	1			1	1			1	1	
Luffing insert	38 ft*				1	1	1	1	2	2	2	2	3
Luffing jib head	18 ft	1	1	1	1	1	1	1	1	1	1	1	1
Max. L - boom length (ft)		198	208	218	227	237	247	257	265	275	285	295	304

*Actual lengths of boom sections are metric (e.g. 3 m, 6 m, 11.7 m, 12 m). The figures shown above are approximate conversions to feet.

Lift chart for L – boom (No. 2017 / 1309.xx)

Main boom length 131 ft

Capacities in 1000 lbs
counterweight 111,300 lbs and carbody counterweight 33,100 lbs

Radius (ft)	Boom length in (ft)				
	198	237	265	295	304
19.4	94.9				
20	94.9				
25	93.6	56.8	36.3		
30	90.8	54.7	35.2	22.9	20.8
40	79.5	49.5	32.2	20.8	18.7
50	63.3	45.9	29.5	18.9	16.9
60	49.9	42.6	27.0	17.2	15.4
70	45.2	39.3	24.3	15.9	14.1
80	39.0	36.1	22.5	14.6	13.0
90	33.3	32.7	20.4	13.6	12.1
100	28.8	28.4	18.4	12.3	11.0
110	25.3	24.8	16.9	11.1	9.8
120	22.3	22.0	15.8	10.2	8.9
130	19.8	19.5	14.9	9.6	8.3
140	17.7	17.4	14.2	9.1	7.9
150	15.9	15.6	13.4	8.7	7.5
160	14.3	14.0	12.7	8.3	7.2
170	13.0	12.6	12.2	7.9	6.8
180	11.7	11.4	11.1	7.6	6.5
195	10.1	9.8	9.5	7.1	6.2
210		8.5	8.2	6.6	5.8
220		7.7	7.4	6.4	5.6
230		6.9	6.7	6.0	5.5
240			6.0	5.2	5.0
250			5.1	4.4	4.2
255			4.7	4.1	3.8
270				3.1	2.9
280				2.4	2.3
285				2.0	

Main boom length 171 ft

Capacities in 1000 lbs
counterweight 111,300 lbs and carbody counterweight 33,100 lbs

Radius (ft)	Boom length in (ft)				
	238	258	276	296	305
22.2	65.7				
25	65.7	51.8	41.8		
30	64.6	50.7	41.1	32.3	28.6
40	61.1	47.8	38.9	30.3	24.6
50	54.7	45.1	36.5	28.3	22.5
60	48.5	42.2	34.1	25.0	20.8
70	40.3	37.5	32.1	23.7	19.2
80	35.2	33.1	29.8	22.1	17.8
90	31.7	29.7	27.9	21.0	16.6
100	27.7	27.0	24.1	19.5	15.5
110	24.2	24.0	23.0	18.1	14.1
120	21.2	21.0	20.8	17.1	13.1
130	18.7	18.5	18.4	15.8	12.3
140	16.6	16.4	16.3	14.7	11.7
150	14.8	14.6	14.4	13.9	11.2
160	13.2	13.0	12.9	12.5	10.7
170	11.9	11.6	11.5	11.1	9.9
180	10.6	10.4	10.3	9.9	9.2
190	9.5	9.3	9.2	8.9	8.6
200	8.6	8.4	8.2	7.7	7.8
210	7.7	7.5	7.3	6.6	6.7
220	6.9	6.7	6.4	5.7	5.7
230	6.1	5.9	5.5	4.8	4.9
240		5.0	4.7	3.9	4.0
245		4.5	4.3	3.5	3.6
250		4.1	3.9	3.1	3.2
255			3.5	2.7	2.8
260			3.1	2.4	2.4
265			2.7	2.1	2.0

Above lift chart is for reference only. For actual lift duty please refer to lift chart in operator's cab or manual.

L – boom configuration with 171 ft main boom (No. 2017.xx / No. 1309.xx)

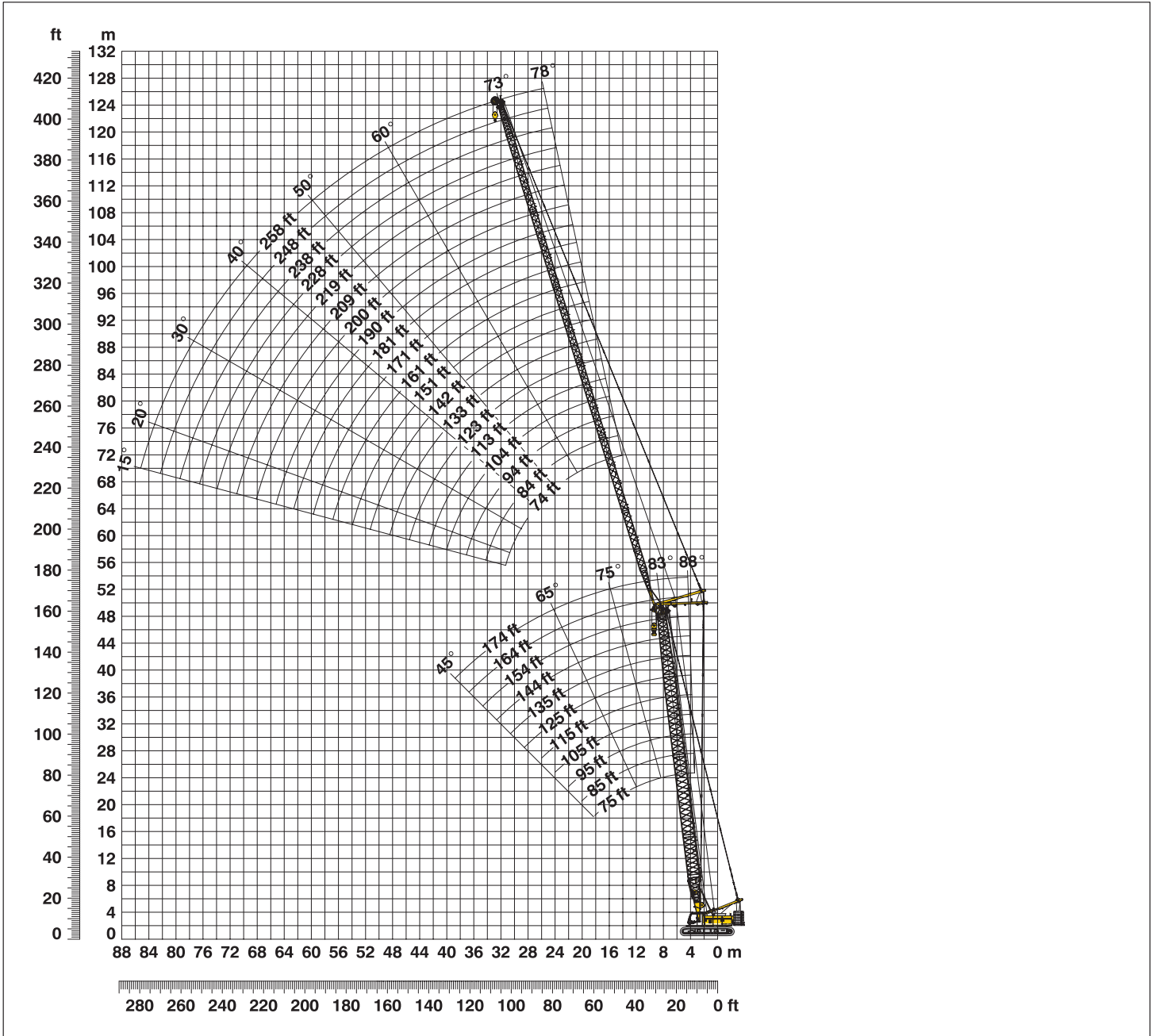
Configuration for L – boom lengths (238 ft – 305 ft)

Boom foot	Length	Amount of boom and luffing jib extensions							
		238	248	258	266	276	286	296	305
Boom foot	23 ft	1	1	1	1	1	1	1	1
Boom insert	10 ft*	1	1	1	1	1	1	1	1
Boom insert	20 ft*	1	1	1	1	1	1	1	1
Boom insert	40 ft*	3	3	3	3	3	3	3	3
Tapered	40 ft*	1	1	1	1	1	1	1	1
Luffing insert	10 ft*	1		1		1		1	
Luffing insert	20 ft*		1	1			1	1	
Luffing insert	38 ft*				1	1	1	1	2
Luffing jib head	18 ft	1	1	1	1	1	1	1	1
Max. L – boom length (ft)		238	248	258	266	276	286	296	305

*Actual lengths of boom sections are metric (e.g. 3 m, 6 m, 11.7 m, 12 m). The figures shown above are approximate conversions to feet.

Working range - luffing jib (No. 1309.xx) 78° - 15°

Main boom 88° - 45°



Boom configuration for main boom lengths (75 ft - 174 ft) – see table 1 on page 10

Jib configuration for jib lengths (74 ft - 258 ft) (No. 1309.xx)

	Length	Amount of luffing jib extensions																			
Luffing jib foot	18 ft	1	1	1	1	1	1	1	1	1	1	1	1	1	1	1	1	1	1	1	
Luffing jib insert	10 ft*				1			1			1			1			1			1	
Luffing jib insert	20 ft*				1	1			1	1			1	1			1	1		1	
Luffing jib insert	38 ft*	1	1	1	1	2	2	2	2	3	3	3	3	4	4	4	4	5	5	5	
Luffing jib head	18 ft	1	1	1	1	1	1	1	1	1	1	1	1	1	1	1	1	1	1	1	
Luffing jib length (ft)		74	84	94	104	113	123	133	142	151	161	171	181	190	200	209	219	228	238	248	258

*Actual lengths of boom sections are metric (e.g. 3 m, 6 m, 11.7 m). The figures shown above are approximate conversions to feet.

Lift chart – tower crane (No. 1309.xx)

Main boom angle 88°

Main boom 75 ft

Radius (ft)	Jib length in (ft)							
	74	94	113	133	161	199	228	258
26.7	104.9							
35	94.3	84.9	69.7					
40	85.6	79.7	67.9	54.4				
45	76.8	74.0	65.3	53.1	36.5			
55	65.8	63.5	59.2	50.2	34.8	20.3		
60	61.3	59.0	55.8	48.8	33.7	19.8	15.0	
65	56.7	55.0	53.3	46.6	32.8	19.6	14.8	10.2
80	26.6	43.8	43.5	40.6	30.4	18.8	13.6	9.1
100		26.6	33.1	32.8	27.1	17.7	12.5	8.0
115			27.8	27.5	24.8	16.9	11.8	7.3
135				22.4	21.6	15.9	11.0	6.6
160					17.5	14.7	10.2	5.9
200						11.4	9.4	5.2
225							8.2	4.9
240								4.8
255								4.7

Main boom 105 ft

Radius (ft)	Jib length in (ft)							
	74	94	113	133	161	199	228	258
27.7	92.1							
35	84.1	73.4						
40	77.3	69.6	60.6	47.7				
50	67.3	62.1	55.8	46.3	33.5			
55	62.7	58.9	53.4	45.3	32.8	19.8		
60	59.2	55.8	49.9	44.5	32.0	19.7	14.7	
70	51.1	49.2	46.3	41.1	30.7	19.1	13.6	9.3
80	44.0	43.8	42.3	38.4	29.2	18.3	13.1	8.7
100		33.3	33.1	32.8	26.7	16.9	12.1	7.7
115			27.8	27.5	20.2	16.0	11.3	7.1
135				18.5	16.5	14.9	10.6	6.4
165					13.7	13.2	9.8	5.6
200						10.2	9.1	5.1
225							8.3	4.8
240								4.7
255								4.6

Main boom 125 ft

Radius (ft)	Jib length in (ft)							
	74	94	113	133	161	199	228	258
28.4	77.4							
35	72.0	63.7						
40	67.7	60.5	53.7					
45	63.0	57.4	50.9	42.2				
50	59.3	54.4	48.7	41.6	31.0			
55	55.4	50.9	46.8	40.5	30.4	19.9		
65	49.6	46.3	43.1	38.1	29.3	18.2	13.2	
70	47.3	44.1	41.3	36.8	28.8	17.9	13.0	8.9
80	42.8	40.3	37.8	34.5	27.3	17.2	12.5	8.4
100		33.3	32.0	30.2	21.5	15.9	11.6	7.5
120			17.1	15.6	17.5	14.7	10.8	6.7
135				14.5	14.7	13.9	10.3	6.3
165					11.9	12.1	9.5	5.5
200						9.4	8.9	4.9
220							7.7	4.7
255								4.4

Main boom 154 ft

Radius (ft)	Jib length in (ft)							
	74	94	113	133	161	199	228	258
29.4	61.1							
35	57.9	51.0						
40	54.6	48.6	42.9					
45	50.6	46.0	41.3	35.0				
50	48.6	43.9	39.5	34.4	25.1			
60	43.7	40.2	36.2	32.4	24.1	16.4		
65	41.5	38.1	34.8	31.2	23.5	16.0	12.0	
70	39.4	36.4	33.5	30.0	23.1	15.8	11.9	8.1
80	36.6	33.8	30.8	28.1	21.7	15.2	11.5	7.8
85	20.3	32.6	29.8	27.0	21.0	14.9	11.2	7.6
100		28.3	16.1	17.4	18.0	14.0	10.7	7.0
120			13.3	13.2	14.1	12.8	10.0	6.4
140				11.3	11.1	11.7	9.4	5.9
200						7.6	8.3	4.7
230							5.7	4.4
260								4.2

Main boom 164 ft

Radius (ft)	Jib length in (ft)						
	74	94	113	133	161	181	199
29.8	56.8						
35	53.9	47.4					
40	50.5	45.2	39.8				
45	47.6	42.8	38.5	32.7			
50	45.4	40.9	36.7	32.0	23.1		
55	42.8	38.8	35.4	31.1	22.7	18.8	
60	40.8	37.3	33.8	30.2	22.3	18.3	15.6
70	37.7	33.9	31.3	28.0	21.2	17.5	15.0
80	35.0	31.0	28.7	24.1	19.9	16.9	14.4
85	18.5	29.6	27.8	21.1	19.3	16.3	14.2
100		15.1	14.8	14.6	16.2	15.1	13.2
120			11.8	11.8	12.1	12.4	12.1
140				10.2	10.1	10.6	11.0
165					8.6	9.2	9.6
185						8.1	8.6
205							7.0

Main boom 174 ft

Radius (ft)	Jib length in (ft)						
	74	84	94	104	113	123	133
30.1	51.5						
35	49.4	46.4	43.7				
40	46.6	44.0	41.8	39.3	36.9		
45	44.1	42.0	39.7	37.7	35.8	32.9	30.6
50	42.1	39.7	38.0	36.0	34.2	32.0	29.9
60	37.9	36.1	34.8	32.9	31.5	29.7	28.1
70	34.8	33.1	31.6	30.3	29.1	27.4	24.5
80	31.9	30.7	29.4	28.0	26.8	21.7	22.8
85	17.6	29.6	28.3	27.1	16.6	19.0	20.5
95		15.2	15.1	15.1	14.5	15.2	16.6
100			14.2	14.2	13.8	14.3	15.2
110				12.9	12.7	12.8	13.4
120					11.8	11.7	11.9
130						10.7	10.8
135							10.3
140							9.9

Capacities in 1000 lbs with luffing jib (No. 1309.xx) 111,300 lbs counterweight + 33,100 lbs carbody counterweight. Above lift chart is for reference only. For actual lift duty and complete chart with all available configurations please refer to lift chart in operator's cab or manual.

Lift chart - luffing jib (No. 1309.xx)

Main boom angle 83°

Main boom 75 ft

Radius (ft)	Jib length in (ft)							
	74	94	113	133	161	199	228	258
39.7	97.4							
50	76.5	76.1						
55	67.8	67.5	64.7					
60	60.9	60.5	60.2	50.8				
65	55.1	54.8	54.5	49.7	33.7			
80	42.7	42.5	42.2	41.8	31.6	19.9		
85	39.6	39.4	39.1	38.7	30.8	19.5	14.0	
95		34.4	34.1	33.7	29.6	18.7	13.1	8.5
105		26.6	30.1	29.8	27.6	17.9	12.7	8.0
120			25.5	25.2	24.7	17.0	11.9	7.4
140				20.6	20.2	16.0	11.1	6.7
170					15.4	14.7	10.2	5.8
205						11.0	9.4	5.2
235							8.0	4.9
240								4.9
265								4.7

Main boom 105 ft

Radius (ft)	Jib length in (ft)							
	74	94	113	133	161	199	228	258
43.3	80.5							
50	74.1	67.8						
55	67.0	64.6	57.6					
65	54.4	54.0	53.6	45.6				
70	49.7	49.3	49.0	44.4	31.8			
80	42.2	41.9	41.5	41.1	30.6	19.7		
90	36.5	36.2	35.9	35.5	29.3	18.5	12.9	
100		31.8	31.5	31.2	28.2	17.8	12.4	8.0
110		26.4	28.0	27.6	26.7	17.2	12.0	7.7
125			23.5	21.8	21.9	16.4	11.3	7.1
145				18.8	17.9	15.4	10.6	6.4
170					14.9	13.9	9.9	5.7
210						10.4	9.1	5.0
235							8.0	4.7
240								4.7
265								4.6

Main boom 125 ft

Radius (ft)	Jib length in (ft)							
	74	94	113	133	161	199	228	258
45.7	67.7							
55	60.4	56.5						
60	56.8	53.4	48.5					
65	51.2	49.6	46.4	41.0				
75	45.2	44.6	42.3	38.4	29.6			
85	38.7	38.4	38.1	35.8	28.3	17.7		
95	26.6	33.5	33.2	32.8	26.9	17.2	12.4	
100		31.5	31.2	30.8	24.8	16.9	12.1	8.0
110		27.9	27.7	27.3	22.4	16.3	11.7	7.5
130			18.3	17.0	18.4	15.2	10.8	6.7
150				15.1	15.0	14.3	10.2	6.1
175					12.4	12.5	9.5	5.5
240							7.5	4.6
270								4.4

Main boom 154 ft

Radius (ft)	Jib length in (ft)							
	74	94	113	133	161	199	228	258
49.3	51.7							
55	49.4	44.2						
65	44.1	40.7	37.3					
70	41.5	38.7	35.7	32.0				
75	39.5	36.9	33.9	30.7	24.9			
90	34.8	32.1	29.7	27.4	22.5	15.5		
95	33.1	30.9	28.5	24.4	21.6	15.2	11.7	
105		28.9	20.8	20.7	20.4	14.8	11.0	7.2
115		16.8	17.8	18.1	18.1	14.2	10.7	7.0
130			15.2	14.9	15.6	13.4	10.1	6.5
150				12.6	12.6	12.1	9.6	5.9
180					10.0	10.2	8.9	5.2
245							5.9	4.4
275								4.3

Main boom 164 ft

Radius (ft)	Jib length in (ft)						
	74	94	113	133	161	181	199
50.5	47.4						
60	43.0	39.5					
65	40.8	37.5	34.3				
70	38.3	35.4	32.7	29.3			
80	34.9	32.0	29.7	27.2	22.0		
85	33.6	30.5	28.5	24.8	21.3	18.0	
90	32.5	29.4	27.2	23.9	20.7	17.7	14.7
95	31.0	28.3	22.0	22.7	19.9	17.2	14.6
115		16.4	16.6	16.4	16.6	15.5	13.4
130			13.6	14.2	13.8	13.2	12.5
150				11.9	11.2	11.0	11.1
180					8.9	9.0	9.1
200						8.0	8.0
215							7.2

Main boom 174 ft

Radius (ft)	Jib length in (ft)						
	74	84	94	104	113	123	133
51.7	43.2						
55	42.2	39.6					
60	39.6	37.8	36.3				
65	37.5	35.6	34.4	32.9	31.3		
70	35.2	33.9	32.4	31.3	30.0	28.4	26.7
80	32.0	30.4	29.3	28.3	27.1	24.7	23.8
90	29.8	28.1	26.9	23.2	23.0	22.8	21.8
95	28.5	27.2	21.9	21.8	21.1	21.3	21.0
105		17.8	17.9	18.5	18.3	18.7	18.8
115			15.7	15.9	16.0	16.4	17.0
125				14.1	14.2	14.5	15.0
135					12.6	13.0	13.3
145						11.6	12.0
155							10.8

Capacities in 1000 lbs with luffing jib (No. 1309.xx) 111,300 lbs counterweight + 33,100 lbs carbody counterweight. Above lift chart is for reference only. For actual lift duty and complete chart with all available configurations please refer to lift chart in operator's cab or manual.

Lift chart – luffing jib (No. 1309.xx)

Main boom angle 75°

Main boom 75 ft

Radius (ft)	Jib length in (ft)							
	74	94	113	133	161	199	228	258
59.9	58.2							
70	48.0	47.5						
75	44.1	43.7						
80	40.7	40.4	40.0					
85	37.8	37.5	37.1	36.6				
95	33.0	32.7	32.3	31.9				
100		30.7	30.3	29.9	29.2			
115		25.8	25.5	25.1	24.5	17.7		
125			22.9	22.6	22.0	17.1	12.2	
130			21.8	21.4	20.8	16.9	11.8	
140				19.5	18.9	16.3	11.3	6.9
150				17.7	17.2	15.9	11.0	6.6
180					13.3	12.5	10.0	5.8
215						9.4	8.8	5.2
245							6.9	4.8
275								4.6

Main boom 105 ft

Radius (ft)	Jib length in (ft)							
	74	94	113	133	161	199	228	258
67.5	48.3							
80	39.2	38.7						
85	36.4	36.0	35.5					
95	31.8	31.4	31.0	30.5				
100	29.8	29.4	29.0	28.6				
105		27.7	27.3	26.8	26.1			
120		23.4	23.1	22.7	22.0			
125			21.9	21.5	20.9	16.9		
135			19.9	19.5	18.8	16.4	11.3	
140			18.9	18.5	17.9	16.2	11.1	
145				17.7	17.1	15.9	10.9	6.7
160				15.4	14.9	14.0	10.4	6.3
190					11.5	10.8	9.6	5.5
225						8.0	7.5	5.0
255							5.8	4.7
280								4.0

Main boom 125 ft

Radius (ft)	Jib length in (ft)							
	74	94	113	133	161	199	228	258
72.6	42.8							
85	35.3	34.8						
90	32.9	32.4	32.0					
100	28.9	28.5	28.1	27.5				
110	25.7	25.3	24.9	24.4	23.7			
130		20.4	20.1	19.7	19.0	16.0		
140			18.3	17.8	17.2	15.5	10.8	
145			17.4	17.0	16.4	15.3	10.7	
150				16.3	15.6	14.7	10.5	6.5
165				14.2	13.6	12.8	10.1	6.1
190					11.0	10.2	9.5	5.5
230						7.3	6.7	4.8
255							5.3	4.6
285								3.4

Main boom 154 ft

Radius (ft)	Jib length in (ft)							
	74	94	113	133	161	199	228	258
80.2	35.9							
90	31.2	30.6						
100	27.4	26.9	26.5					
105	25.8	25.3	24.9	23.9				
115	23.0	22.6	22.2	21.7				
120		21.4	21.0	20.5	18.5			
135		18.4	18.0	17.5	16.8	12.9		
150			15.6	15.2	14.5	12.4	9.4	
155			14.9	14.5	13.8	12.2	9.3	
160				13.9	13.2	11.9	9.2	5.9
170				12.7	12.1	11.0	8.9	5.8
200					9.4	8.5	7.5	5.1
265							4.2	3.1
295								2.2

Main boom 164 ft

Radius (ft)	Jib length in (ft)						
	74	94	113	133	161	181	199
82.8	32.6						
95	28.6	27.4					
100	26.8	25.6	24.1				
105	25.3	24.4	23.4				
110	23.8	23.3	22.3	20.6			
115	22.5	22.1	21.3	20.0			
120	21.3	20.9	20.3	19.1	16.4		
130		18.9	18.5	17.5	15.6	13.7	
140		17.1	16.8	16.2	14.4	13.2	11.4
155			14.6	14.1	12.6	11.8	10.6
175				11.9	11.0	10.2	9.3
205					8.7	8.3	7.5
220						7.3	6.9
240							5.7

Main boom 174 ft

Radius (ft)	Jib length in (ft)						
	74	84	94	104	113	123	133
85.3	28.3						
90	27.3	25.9					
95	25.4	24.6	23.6				
100	24.3	23.5	22.9	22.0			
105	23.2	22.5	21.9	21.2	20.6		
110	22.1	21.6	20.9	20.3	19.7	18.9	17.8
115	21.2	20.4	20.2	19.3	18.8	18.0	17.5
120	20.6	19.5	19.1	18.6	17.9	17.3	16.7
130		18.3	17.4	16.9	16.5	15.8	15.3
140			16.5	15.6	15.1	14.6	14.2
150				14.8	14.1	13.4	13.0
160					13.3	12.7	12.1
170						12.0	11.5
180							10.9

Capacities in 1000 lbs with luffing jib (No. 1309.xx) 111,300 lbs counterweight + 33,100 lbs carbody counterweight. Above lift chart is for reference only. For actual lift duty and complete chart with all available configurations please refer to lift chart in operator's cab or manual.

Lift chart - luffing jib (No. 1309.xx)

Main boom angle 65°

Main boom 75 ft

Radius (ft)	Jib length in (ft)							
	74	94	113	133	161	199	228	258
83.5	36.4							
95	31.0	30.6						
110	25.9	25.5	25.1					
120		22.9	22.5	22.0				
130		20.6	20.3	19.9				
135			19.3	18.9	18.2			
145			17.6	17.2	16.5			
160				15.0	14.4	13.5		
165				14.4	13.8	12.9		
175					12.6	11.8	10.3	
190					11.1	10.3	9.7	5.6
230						7.4	6.8	5.0
255							5.4	4.7
285								3.5

Main boom 105 ft

Radius (ft)	Jib length in (ft)							
	74	94	113	133	161	199	228	258
96	28.4							
110	24.0	23.6						
120	21.5	21.1	20.7					
130		19.0	18.6	18.1				
140		17.2	16.9	16.4				
150			15.4	14.9	14.2			
160			14.0	13.6	12.9			
170				12.5	11.8	10.9		
180				11.5	10.8	9.9		
185					10.4	9.5	8.8	
205					8.8	7.9	7.3	5.3
240						5.8	5.2	4.3
270							3.8	3.1
300								2.1

Main boom 125 ft

Radius (ft)	Jib length in (ft)							
	74	94	113	133	161	199	228	258
104.3	24.1							
120	20.2	19.7						
130	18.2	17.8	17.4					
140		16.1	15.7	15.2				
150		14.7	14.3	13.8				
155			13.7	13.2	12.4			
170			11.9	11.5	10.8			
180				10.6	9.9	8.9		
185				10.1	9.5	8.5		
210					7.6	6.7	5.8	4.5
215					7.3	6.4	5.5	4.3
250						4.6	3.9	2.8
260							3.6	2.4
275							3.0	

Main boom 154 ft

Radius (ft)	Jib length in (ft)							
	74	94	113	133	161	199	228	
116.8	18.7							
130	15.1	15.8						
140	13.0	14.3	13.8					
155			12.4	12.0	11.4			
160		11.8	11.4	10.9				
170			10.4	9.9	9.1			
180			9.5	9.1	8.3			
190				8.3	7.6	6.0		
200				7.6	6.9	5.5		
205					6.6	5.2	4.0	
220					5.8	4.5	3.4	
225					5.5	4.3	3.1	
255						3.2	2.1	
265						2.9		

Main boom 164 ft

Radius (ft)	Jib length in (ft)							
	74	94	113	133	161	181	199	
120.9	17.1							
135	13.4	14.3						
145	11.6	12.9	12.5					
155		11.8	11.3	10.7				
165		10.7	10.3	9.8				
175			9.4	8.9	7.9			
185			8.6	8.2	7.2	6.3		
195				7.5	6.6	5.7	5.0	
200				7.1	6.3	5.5	4.7	
230					4.8	4.1	3.4	
240						3.8	3.0	
250						3.5	2.7	
260							2.4	
265							2.3	

Main boom 174 ft

Radius (ft)	Jib length in (ft)							
	74	84	94	104	113	123	133	
125.1	15.6							
130	14.9							
135	14.1	13.8						
140	13.5	13.2	12.9					
145	12.8	12.5	12.3	12.0				
150	12.2	11.9	11.7	11.4	11.2			
155		11.4	11.2	10.9	10.7	10.4		
160		10.9	10.7	10.4	10.2	9.9	9.6	
170			9.7	9.5	9.3	9.0	8.8	
180				8.6	8.5	8.2	8.0	
190					7.8	7.5	7.3	
195						7.2	7.0	
200						6.8	6.6	
205							6.3	

Capacities in 1000 lbs with luffing jib (No. 1309.xx) 111,300 lbs counterweight + 33,100 lbs carbody counterweight. Above lift chart is for reference only. For actual lift duty and complete chart with all available configurations please refer to lift chart in operator's cab or manual.

Lift chart – luffing jib (No. 1309.xx)

Main boom angle 45°

Main boom 75 ft

Radius (ft)	Jib length in (ft)							
	74	94	113	133	161	199	228	258
122.9	19.9							
130	18.5							
139		16.5						
150		14.9						
155			13.9					
170			12.2					
175				11.2				
190				9.9				
195					8.8			
215					7.5			
230						5.7		
250						4.7	4.1	
280							2.9	2.2
285								2.1

Main boom 105 ft

Radius (ft)	Jib length in (ft)						
	74	94	113	133	161	199	
143.8	13.8						
150	13.0						
160		11.4					
170		10.4					
180			9.2				
190			8.4				
195				7.6			
205				6.9			
215					5.6		
220					5.4		
235					4.7		
250						3.1	
260						2.8	
275						2.2	

Main boom 125 ft

Radius (ft)	Jib length in (ft)					
	74	94	113	133	161	
157.7	10.5					
165	9.8					
175		8.5				
180		8.1				
185		7.7				
190			6.9			
195			6.7			
200			6.4			
210				5.3		
215				5.1		
220				4.8		
230					3.6	
240					3.2	
250					2.9	

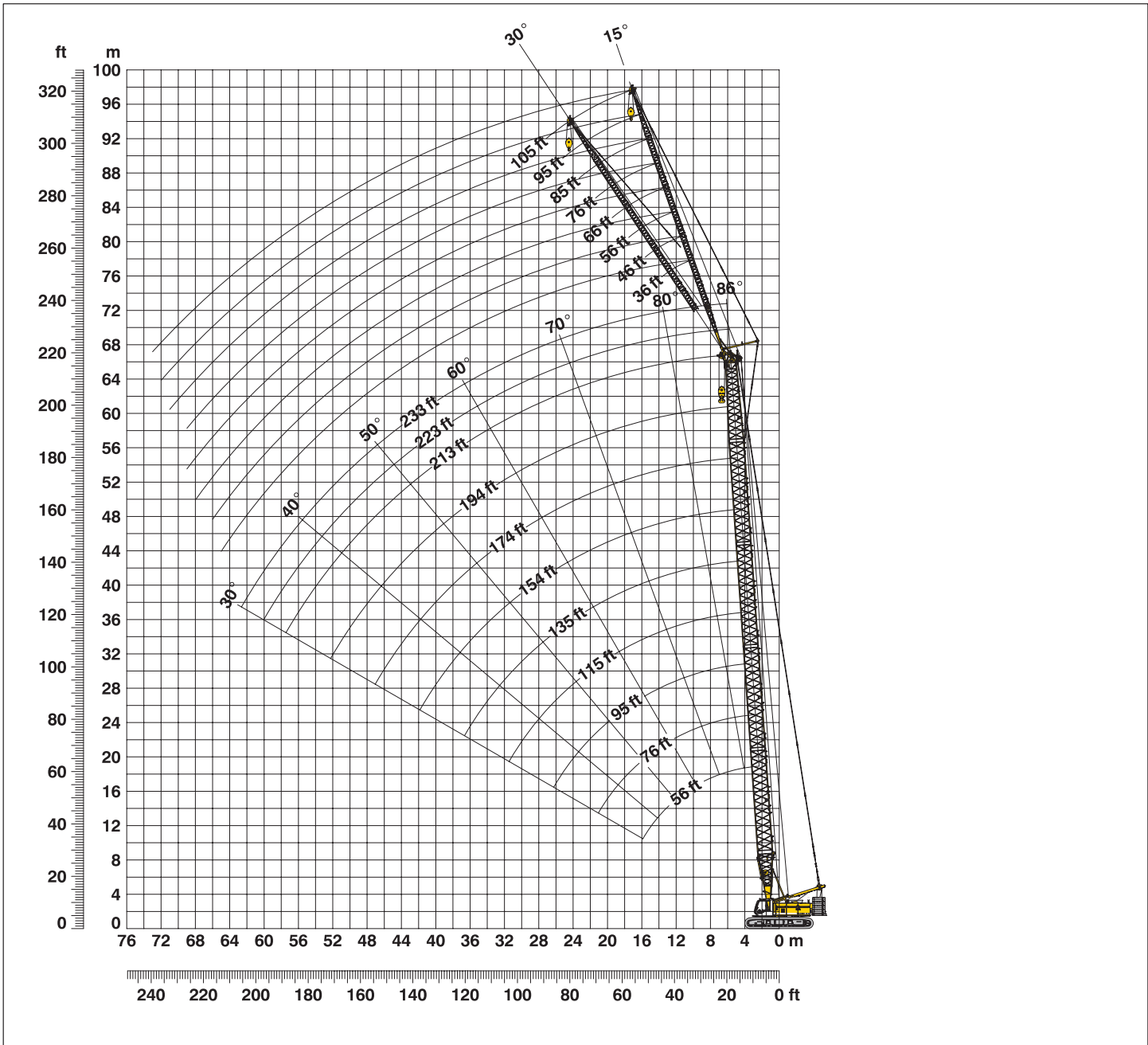
Main boom 154 ft

Radius (ft)	Jib length in (ft)				
	74	94	113	133	
178.6	6.3				
180	6.3				
185	5.9				
195		4.9			
200		4.6			
205		4.4			
210			3.7		
215			3.5		
220			3.3		
225			3.1		
230				2.3	
235				2.2	
240				2.1	

Capacities in 1000 lbs with luffing jib (No. 1309.xx) 111,300 lbs counterweight + 33,100 lbs carbody counterweight. Above lift chart is for reference only. For actual lift duty and complete chart with all available configurations please refer to lift chart in operator's cab or manual.

Working range - fixed jib (No. 0806.xx) 15° and 30°

Main boom 88°- 30°



Boom configuration for boom lengths (56 ft - 233 ft) – see table 1 on page 10

Fixed jib configuration for fixed jib lengths (36 ft - 105 ft) (No. 0806.xx)

	Length	Amount of fixed jib extensions							
		1	1	1	1	1	1	1	1
Fixed jib foot	18 ft	1	1	1	1	1	1	1	1
Fixed jib insert	10 ft*		1		1		1		1
Fixed jib insert	20 ft*	0	0	1	1	2	2	3	3
Fixed jib head	18 ft	1	1	1	1	1	1	1	1
Fixed jib length (ft)		36	46	56	66	76	85	95	105

*Actual lengths of boom sections are metric (e.g. 3 m, 6 m). The figures shown above are approximate conversions to feet.

Lift chart - fixed jib (No. 0806.xx)

Offset 15°

Main boom 56 ft

Radius (ft)	Fixed jib length in (ft)			
	36	66	85	105
17.2	53.0			
30	53.0	37.7		
40	53.0	35.4	20.8	
50	52.8	33.1	19.7	12.0
60	51.3	30.0	18.1	11.4
70	44.3	27.2	16.8	10.8
80	39.6	24.4	15.8	10.3
85	37.6	23.6	15.4	10.0
115		19.2	13.7	9.1
130			13.2	8.8
150				8.5
155				8.4

Main boom 85 ft

Radius (ft)	Fixed jib length in (ft)			
	36	66	85	105
18.2	53.0			
35	53.0	37.0		
40	53.0	36.1	21.2	
50	53.0	34.2	20.1	12.0
60	52.6	32.2	19.0	11.4
80	40.0	27.9	16.9	10.4
90	34.2	25.1	16.1	10.0
100	29.6	24.1	15.3	9.7
110	26.0	22.6	14.8	9.4
140		19.3	13.6	8.8
160			13.1	8.5
180				8.2

Main boom 115 ft

Radius (ft)	Fixed jib length in (ft)			
	36	66	85	105
19.2	53.0			
35	53.0	35.4		
40	53.0	34.7	20.3	
50	53.0	33.4	19.6	12.0
60	53.0	31.9	18.7	11.5
80	39.3	28.9	17.0	10.6
100	28.9	24.6	15.6	9.9
120	22.2	22.6	14.5	9.4
140	17.5	18.6	13.7	9.0
170		13.5	13.0	8.5
190			11.5	8.3
205				8.2

Main boom 144 ft

Radius (ft)	Fixed jib length in (ft)			
	36	66	85	105
20.3	53.0			
35	53.0	35.0		
45	53.0	34.0	20.1	
50	53.0	33.5	19.8	11.8
60	52.3	32.3	19.1	11.5
80	38.5	30.1	17.7	10.6
100	28.0	27.7	16.2	10.0
140	16.7	17.8	14.3	9.1
165	12.4	13.5	13.6	8.7
195		9.7	10.3	8.3
215			8.3	8.2
235				7.1

Main boom 174 ft

Radius (ft)	Fixed jib length in (ft)			
	36	66	85	105
21.3	53.0			
35	53.0	32.5		
45	53.0	31.9	19.2	
50	53.0	31.4	18.9	11.6
60	53.0	30.6	18.3	11.3
100	27.2	27.4	16.1	10.1
140	15.8	17.0	14.1	9.2
180	9.6	10.7	11.2	8.5
190	8.5	9.5	10.0	8.2
215		7.0	7.6	7.8
235			5.9	6.4
255				5.0

Main boom 194 ft

Radius (ft)	Fixed jib length in (ft)			
	36	66	85	105
22	53.0			
35	53.0	31.0		
45	52.9	30.6	18.7	
55	51.3	29.8	18.2	11.4
60	50.7	29.5	17.9	11.2
100	26.1	22.5	15.8	10.1
140	15.2	16.5	13.6	9.2
180	9.0	10.1	10.7	8.6
205	6.4	7.4	7.9	8.0
235		4.8	5.4	5.8
255			4.0	4.4
275				3.2

Main boom 213 ft

Radius (ft)	Fixed jib length in (ft)			
	36	66	85	105
22.7	51.4			
35	50.4	29.3		
45	49.0	29.1	18.1	
55	46.9	28.4	17.8	11.2
80	36.7	25.1	16.7	10.5
120	19.4	20.8	15.1	9.6
160	11.2	12.3	13.0	8.9
200	6.3	7.3	7.9	8.2
225	4.2	5.1	5.6	6.1
255		2.9	3.5	3.9
275			2.2	2.7
285				2.1

Main boom 223 ft

Radius (ft)	Fixed jib length in (ft)			
	36	46	66	75
23	48.6			
30	48.1	40.8		
40	46.6	40.0	28.2	22.1
60	42.5	37.4	27.1	21.3
80	36.4	34.4	24.4	20.2
120	19.1	19.6	20.6	18.3
160	10.8	11.2	12.0	12.4
200	6.0	6.3	7.0	7.3
230	3.5	3.8	4.4	4.7
240		3.1	3.6	3.9
260			2.3	2.6
270				2.0

Main boom 233 ft

Radius (ft)	Fixed jib length in (ft)			
	36	46		
23.4	45.1			
30	45.0	38.4		
40	43.7	38.0		
80	35.1	32.4		
120	18.8	19.3		
140	14.1	14.5		
160	10.5	11.0		
180	7.8	8.2		
200	5.7	6.0		
220	3.9	4.3		
240	2.5	2.8		
250		2.1		

Capacities in 1000 lbs with fixed jib (No. 0806.xx) 111,300 lbs counterweight + 33,100 lbs carbody counterweight. Above lift chart is for reference only. For actual lift duty and complete chart with all available configurations please refer to lift chart in operator's cab or manual.

Lift chart - fixed jib (No. 0806.xx)

Offset 30°

Main boom 56 ft

Radius (ft)	Fixed jib length in (ft)			
	36	66	85	105
25.4	53.0			
45	50.2	30.2		
60	42.4	24.9	15.9	
70	38.5	23.1	15.2	10.0
80	35.7	21.5	14.5	9.6
90	26.6	20.1	14.0	9.3
100		19.0	13.5	9.0
120		17.8	12.9	8.6
130			12.6	8.5
140			12.4	8.4
150				8.3
160				8.1

Main boom 85 ft

Radius (ft)	Fixed jib length in (ft)			
	36	66	85	105
26.5	53.0			
45	53.0	31.0		
60	47.3	27.2	16.4	
70	43.2	25.2	15.7	9.9
80	40.1	23.4	15.1	9.6
90	34.6	22.1	14.6	9.3
100	29.9	20.8	14.1	9.1
110	26.2	19.9	13.8	8.9
115	24.5	19.5	13.6	8.8
145		18.1	12.8	8.4
165			12.5	8.2
185				7.9

Main boom 115 ft

Radius (ft)	Fixed jib length in (ft)			
	36	66	85	105
27.5	53.0			
50	53.0	29.1		
60	50.2	27.2	16.0	
75	43.6	24.2	15.3	9.7
80	39.9	23.6	15.0	9.6
100	29.3	21.5	14.1	9.2
120	22.5	19.8	13.5	8.8
130	19.9	19.2	13.2	8.7
140	17.6	18.6	13.0	8.6
170		13.6	12.5	8.3
190			11.7	8.1
205				8.0

Main boom 144 ft

Radius (ft)	Fixed jib length in (ft)			
	36	66	85	105
28.5	53.0			
50	52.8	29.3		
60	52.6	27.9	16.0	
75	43.0	24.1	15.2	9.7
80	39.3	23.9	15.0	9.6
100	28.6	22.5	14.4	9.2
120	21.8	21.0	13.8	8.9
140	17.0	18.3	13.3	8.6
165	12.6	13.8	12.9	8.4
195		9.8	10.6	8.1
215			8.4	8.0
235				7.2

Main boom 174 ft

Radius (ft)	Fixed jib length in (ft)			
	36	66	85	105
29.5	52.6			
50	51.5	27.6		
65	48.7	22.3	15.7	
75	42.4	21.6	15.1	9.6
80	38.7	21.4	14.7	9.5
100	27.9	20.9	14.0	9.2
120	21.1	20.4	13.5	8.9
160	12.6	13.9	12.5	8.3
190	8.6	9.8	10.5	7.7
220		6.7	7.4	7.6
240			5.7	6.3
260				4.7

Main boom 194 ft

Radius (ft)	Fixed jib length in (ft)			
	36	66	85	105
30.2	49.5			
50	48.4	23.4		
65	44.4	21.2	14.5	
75	41.9	20.2	14.2	9.4
80	38.2	19.9	13.9	9.4
100	27.4	19.1	13.2	9.1
140	15.7	17.2	12.7	8.6
180	9.3	10.5	11.3	8.2
205	6.5	7.7	8.4	8.1
235		5.0	5.6	6.2
255			4.1	4.7
275				3.3

Main boom 213 ft

Radius (ft)	Fixed jib length in (ft)			
	36	66	85	105
30.9	45.9			
50	44.3	22.1		
65	41.3	21.7	15.2	
75	39.5	21.3	15.0	9.4
80	37.8	20.9	14.8	9.3
120	20.0	18.3	13.5	8.8
160	11.5	13.0	12.4	8.4
200	6.5	7.7	8.5	7.9
225	4.3	5.4	6.0	6.7
255		3.0	3.7	4.3
275			2.3	3.0
290				2.0

Main boom 223 ft

Radius (ft)	Fixed jib length in (ft)			
	36	46	66	75
31.3	43.4			
40	43.1	36.2		
50	41.4	36.0	23.0	
60	39.5	34.7	22.9	18.4
80	35.9	31.7	22.1	17.8
120	19.8	20.4	18.7	15.7
160	11.3	11.8	12.7	13.2
200	6.2	6.6	7.5	7.9
235	3.2	3.5	4.3	4.6
245		2.8	3.5	3.9
265			2.1	2.5
270				2.1

Main boom 233 ft

Radius (ft)	Fixed jib length in (ft)			
	36	46		
31.6	40.9			
40	40.4	34.2		
45	39.8	33.9		
60	37.2	32.4		
80	33.8	30.0		
100	26.6	27.2		
120	19.5	20.2		
140	14.6	15.2		
160	11.0	11.5		
200	5.9	6.4		
240	2.6	2.9		
250		2.2		

Capacities in 1000 lbs with fixed jib (No. 0806.xx) 111,300 lbs counterweight + 33,100 lbs carbody counterweight. Above lift chart is for reference only. For actual lift duty and complete chart with all available configurations please refer to lift chart in operator's cab or manual.

Notice

