

EN-US

HS 8300.2

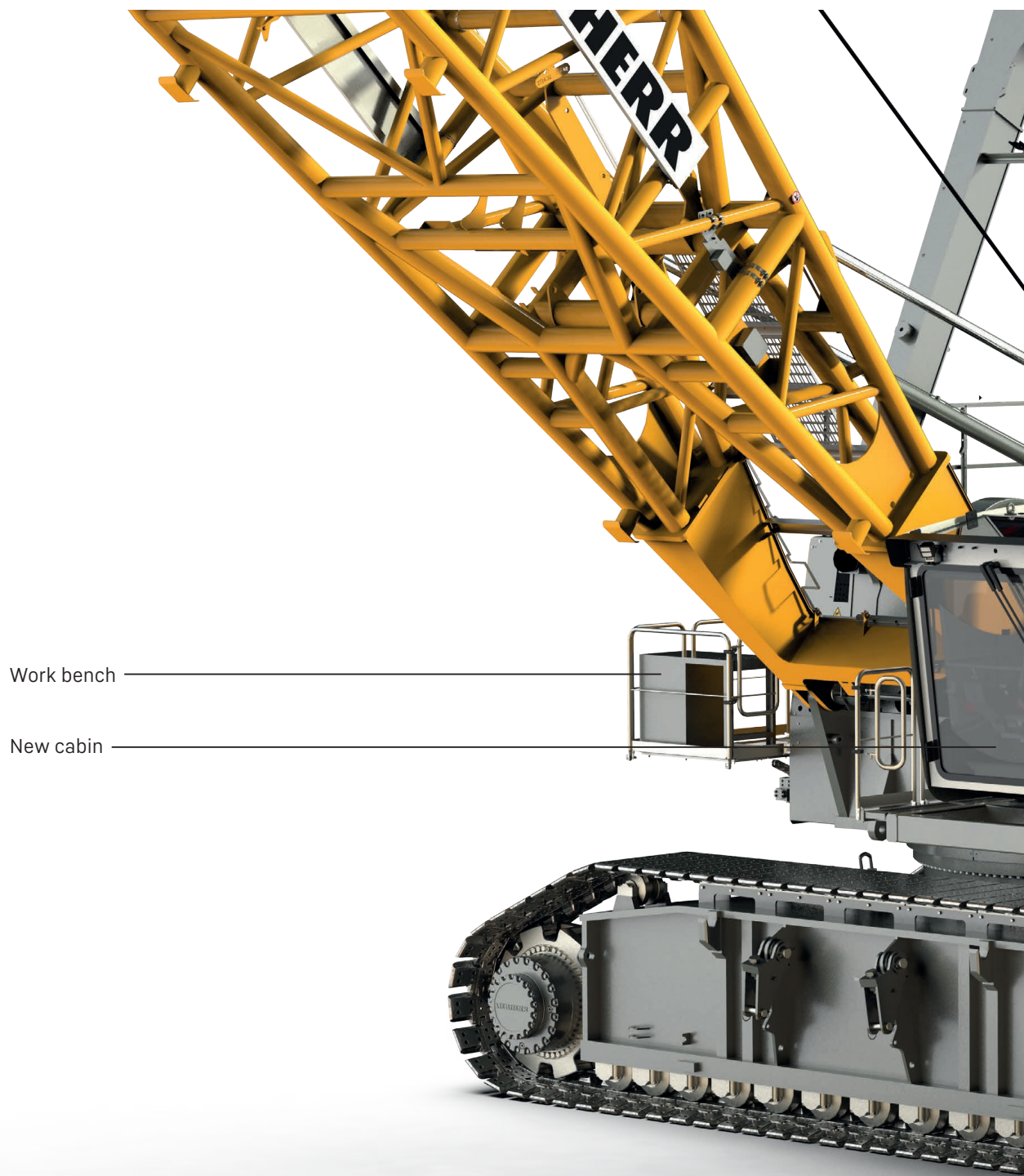
HS 8008.02.03
www.liebherr.com

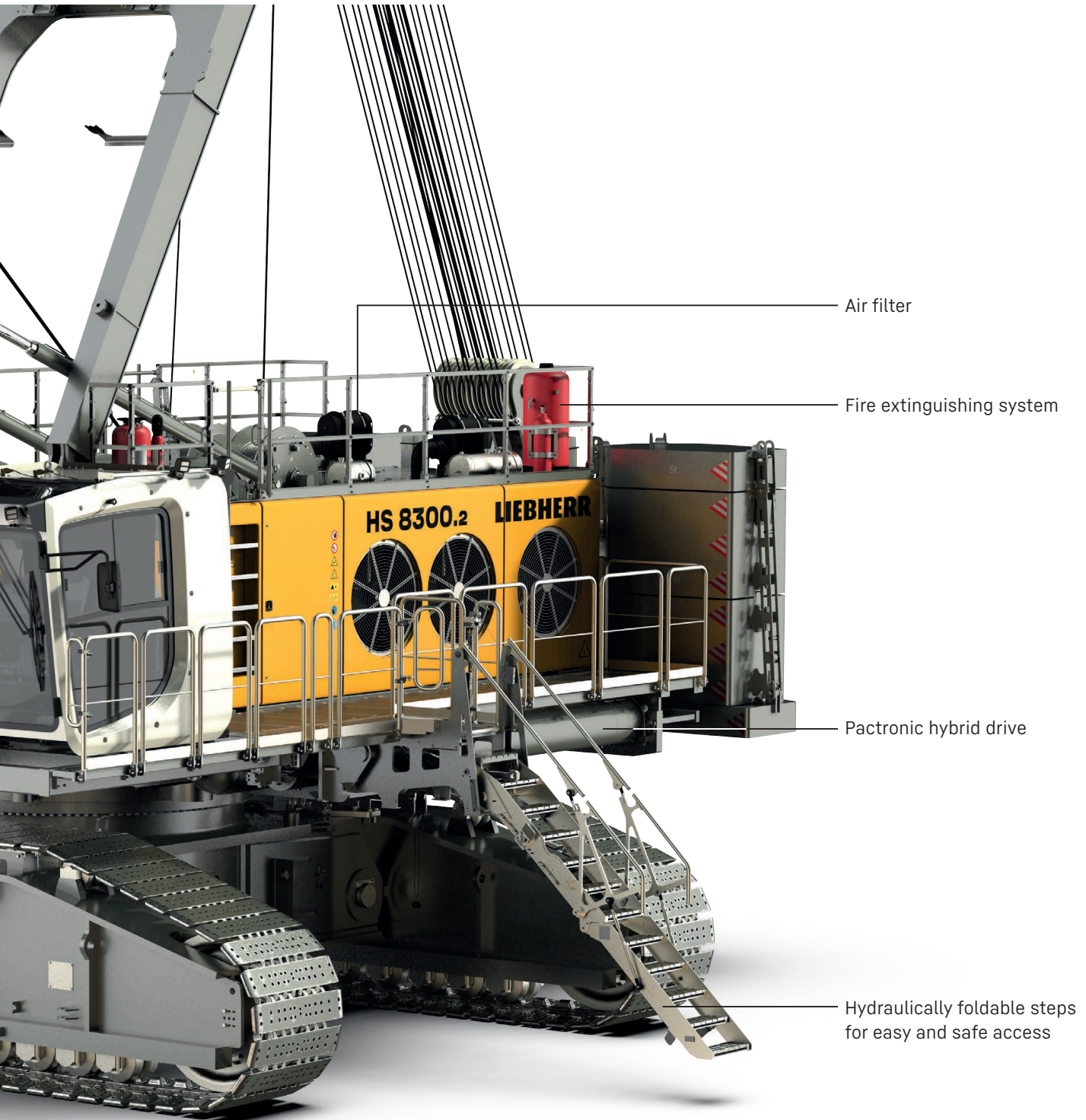
LIEBHERR

Construction machines



Concept and characteristics



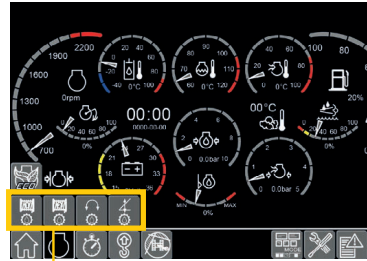




The newly developed cabin combines operator comfort with easy handling.

Air conditioning combined with an air-suspended seat offers an ideal workplace for the operator.

- Completely new cabin design focusing on ergonomics and operating comfort
- Improved soundproofing
- Orthopaedic seat, heatable, coolable and ventilated
- Individually adjustable monitors
- Integrated cool box for storage of provisions
- Charger for mobile devices
- Front window made of safety glass
- Heated outside mirror
- Trainer seat



Gear oil level warning
 The new warning allows the operator to check the gear oil levels of both main winches, the swing drive and the luffing winch. This facilitates daily maintenance of the machine.

Example



Gear oil level warning of winch 1 lights up green: gear oil level of winch 1 is sufficient.



Gear oil level warning of winch 1 lights up yellow after ten seconds: fill gear oil for winch 1.



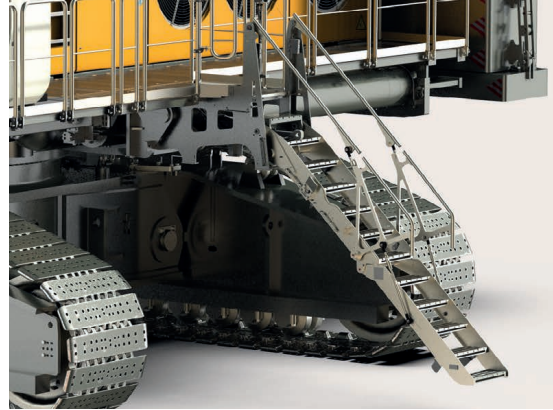
Ground Pressure Visualization





Central service station

- Hydraulic oil refill
- Engine oil refill and drainage
- Splitter box and swing gearbox oil exchange
- Attachment/swing ring bearing grease barrel refilling with filters
- Fast fuel refilling line



Machine access

- Designed for safe access to the machine upperstructure via:
- Perforated steps and platform with railings
 - Platforms with slip-resistant surfaces
 - 45° access system

Technical description



Ground pressure

| | |
|-----------------|-----------|
| Ground pressure | 26.31 PSI |
|-----------------|-----------|

Operating weight

| | |
|---------------------------------|--|
| Composition of operating weight | basic machine with HD undercarriage, 2 main winches 112,405 lbf including wire ropes, 65.6 ft main boom, consisting of A-frame, boom foot (32.8 ft) and boom head (32.8 ft), 173,283 lbs rear counterweight, 3.9 ft track pads, 661,387 lbs hook block |
| Total weight | approx. 780,000 lbs |

Equipment

| | |
|---------------------|--|
| Main boom (2724.32) | max. 223 ft |
| Characteristics | modular designed equipment for lifting, dragline or grab operation for dragline operation, a rotating and movable fairlead is fitted minimized rope angle to drum resulting in lower rope wear |



Diesel engine

| | |
|---|--|
| Power rating according to ISO 9249 | 750 kW (1005 hp) at 1700rpm |
| Engine type | Liebherr D 9512 A7-04 |
| Fuel tank capacity | 486 gal with continuous level indicator and reserve warning |
| AdBlue tank capacity | 58.1 gal with continuous level indicator and reserve warning |
| Exhaust certification | EPA/CARB Tier 4f and EU 2016/1628 Stage V |



Noise measurement data and vibration

| | | |
|--|-----------------------------------|------------------|
| Noise emission | according to 2000/14/EC directive | |
| Emission sound pressure level L_{PA} | 60 dB(A) | (in the cabin) |
| Guaranteed sound power level L_{WA} | 110 dB(A) | (of the machine) |



Hydraulic system

| | |
|--|---|
| Hydraulic pumps | variable pumps in closed and open circuits supplying oil only when needed (flow control on demand) |
| Hydraulic oil tank capacity | 739.7 gal |
| Max. working pressure | 5,076 PSI |
| Max. power at the connection plate | 5,076 PSI \approx 460 kW for external appliances |
| Max. power at undercarriage | 3,626 PSI \approx 310 kW for external appliances |
| Hydraulic oil | electronic monitoring of all filters use of synthetic environmentally friendly oil |
| Hydraulic retrofit kits for attachments | ready-made customized hydraulic retrofit kits are available e.g. powering casing oscillators, VM vibrators, hydraulic grabs |



Control

| | |
|-----------------------|---|
| Control system | includes all control and monitoring functions, designed to withstand extreme environmental conditions and heavy construction tasks |
| Display | high resolution monitor in the operator's cabin, clear display of complete machine operating data, warnings and failure indications in the required language |
| Operation | several movements can be performed simultaneously thanks to electro-hydraulic proportional control, all categories of loads can be positioned with utmost precision |
| Options | PDE*: Process data recording LiTU: Liebherr Telematics Unit Litronic Grab Matic (dredging assistance system) |



Crawlers

| | | |
|-------------------------------|--|----------|
| Drive system | with fixed axial piston hydraulic motors | |
| Crawler side frames | maintenance-free, with hydraulic chain tensioning device | |
| Brake | hydraulically released, spring-loaded multi-disc holding brake | |
| Drive speed | 1 st gear | 0.22 mph |
| | 2 nd gear | 0.43 mph |
| | 3 rd gear | 0.87 mph |
| Flat track pads | width 47.2 inch | |
| Flat track pads option | width 59.0 inch | |



Swing gear

| | |
|---------------------------|--|
| Drive system | 4x swing drives (standard) with axial piston hydraulic motors, planetary gearbox, pinion |
| Swing ring | roller bearing with external teeth |
| Brake | hydraulically released, spring-loaded multi-disc holding brake |
| Swing speed | 0-3.0 rpm continuously variable, selector for 3 speed ranges to increase swing precision |
| Lubrication system | automatic central lubrication system reduces maintenance requirements and increases service life |
| Option | display of swing angle |



Winches

| | | |
|--|--|------------------------------------|
| Main winches | pressure controlled, variable flow hydraulic motors for the drag and hoist winches, full utilisation of engine power as the winch speed is automatically adjusted to suit the respective line pull free fall: clutch and braking functions are provided by the service brake (low wear and maintenance-free multi-disc brake in compact design) | |
| Winch options | Standard | Option |
| Line pull (nominal load) | 110,381 lbf | 154,444 lbf |
| Rope diameter | 46 mm | 50 mm |
| Drum diameter | 3.6 ft | 3.8 ft |
| Rope speed | 0-410 ft/min | 0-360/min |
| Rope capacity in the 1 st layer | 163 ft* | 160 ft* |
| Rope capacity in 4 layers | 959 ft* | *effective length only dragline |
| Options | | |
| Tagline winch | 22,480 lbf with free fall | |

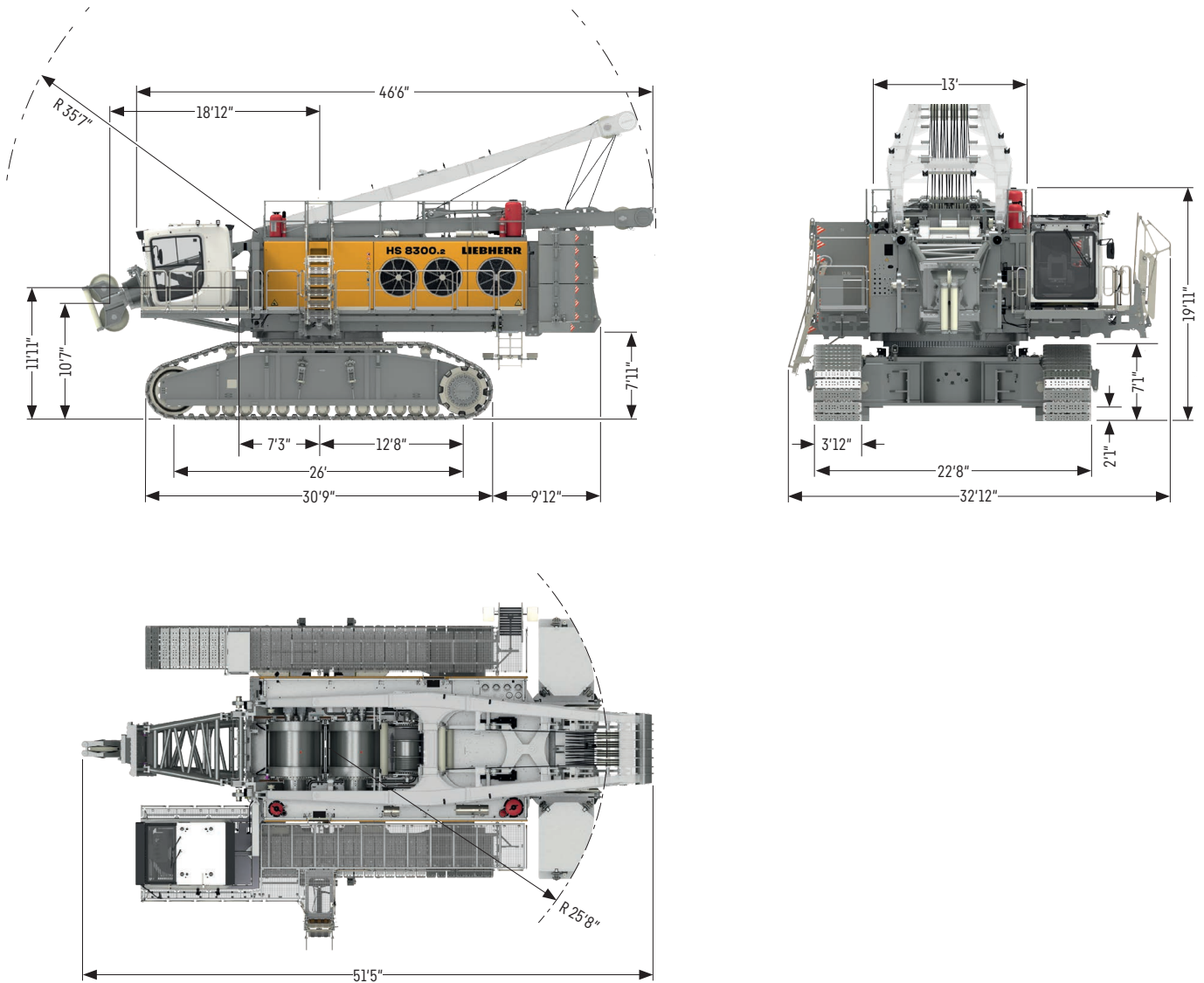


Boom winch

| | |
|----------------------|-----------------|
| Line pull | 33,725 lbf |
| Rope diameter | 24 mm |
| Boom luffing | 15-84° in 130 s |

Dimensions

Basic machine with undercarriage



Remarks

- Liebherr cable excavator HS 8008.02.03
- Designed according to EN 474-1 and EN 474-12. Designed and tested in accordance to ASME B 30.5
- Machine standing on firm, horizontal ground.
- The weight of the lifting device (pulley block, hoist ropes, shackles etc.) must be deducted from the load capacity.
- Additional equipment on boom (e.g. walkways) must be deducted from the lifting capacity.
- For max. wind speed please refer to load chart in operator's cab or manual.
- Working radii are measured from centre of swing and under load.
- The load capacities are valid for 360 degrees of swing.
- Weights may vary depending on the delivered configuration of the machine, the filling level of the tanks as well as generally valid tolerances.
- The figures in this brochure may include options which are not within the standard scope of supply of the machine.

Pactronic hybrid drive

Powerful, energy-efficient hybrid drive

The new HS 8300.2 is fitted with the Pactronic® system developed by Liebherr. This innovative hybrid drive based on hydraulics offers both economic and ecological advantages. Storing and subsequent regeneration of surplus power allows to increase turnover and to significantly lower fuel consumption. The proven technology of the hydraulic accumulator ensures low maintenance requirements and maximum reliability. The decreased energy consumption considerably lowers emissions and thus improves environmental compatibility.

Pactronic® – Lowering mode

- A secondary energy source is added to the drive system.
- The accumulator is charged by regenerating the reserve power while lowering the load.
- The additional surplus power to the primary energy source is used for charging.

Pactronic® – Hoisting mode

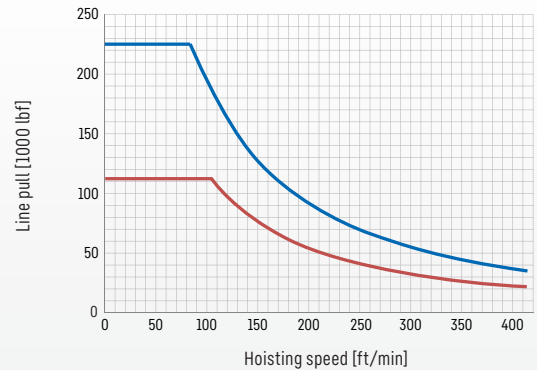
- Stored energy is transferred to the system when the machine requires peak power for hoisting.
- The total hoisting power is the sum of the conventional hydrostatic power and the secondary energy from the accumulator.

Key advantages Pactronic®

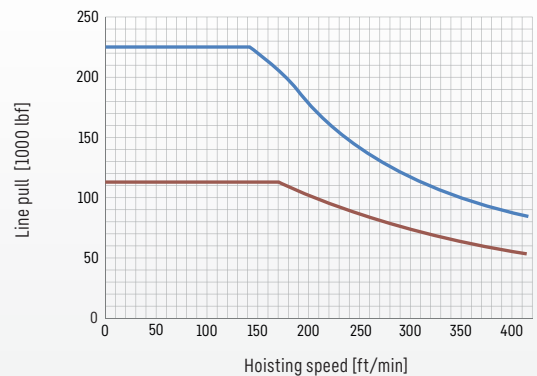
- 750 kW diesel engine combined with Pactronic® allows to achieve a system power comparable to a conventional drive system with 1250 kW
- Effective hoisting power of 800 kW
- Reduced fuel consumption resulting in less CO₂ emission
- Lower noise emission
- Increased hoisting power
- Increased lowering power
- Higher turnover with identical prime mover

| | |
|--|---------------------------|
| Machine class | 661,387 lbs |
| Engine power Tier 4i according to EPA/CARB | 750 kW |
| System power with Pactronic® | 1250 kW |
| Winches | 110,381 lbf / 154,444 lbf |
| Boom – lifting operation | 223.1 ft |
| Boom – grab operation | max. 183.7 ft |

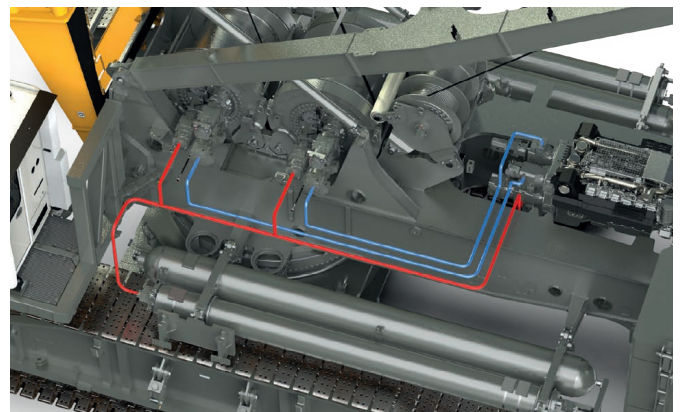
Winch diagram without Pactronic®



Winch diagram with Pactronic®



— 2-winch operation
— 1-winch operation



Grab operations

Mechanical clamshell



Hydraulic clamshell



Mechanical clamshell pedestal mounted



Grab versions

Load chart mechanical clamshell*

Capacities in [1000 lbs]

| Radius [ft] | Boom length [ft] | | | | | | | | | | | | | |
|-------------|------------------|-------|-------|-------|-------|--------|-------|-------|-------|-------|-------|-------|-------|-------|
| | 66 | | 76 | | 85 | | 95 | | 105 | | 115 | | 125 | |
| | 110.3 | 154.4 | 110.3 | 154.4 | 110.3 | 154.4 | 110.3 | 154.4 | 110.3 | 154.4 | 110.3 | 154.4 | 110.3 | 154.4 |
| 25 | 110.2 | 154.3 | 110.2 | 154.3 | 110.2 | 154.30 | 110.2 | 154.3 | 110.2 | 154.3 | | | | |
| 30 | 110.2 | 154.3 | 110.2 | 154.3 | 110.2 | 154.30 | 110.2 | 154.3 | 110.2 | 154.3 | 110.2 | 154.3 | 110.2 | 154.3 |
| 35 | 110.2 | 154.3 | 110.2 | 154.3 | 110.2 | 154.30 | 110.2 | 154.3 | 110.2 | 154.3 | 110.2 | 154.3 | 110.2 | 154.3 |
| 40 | 110.2 | 154.3 | 110.2 | 154.3 | 110.2 | 154.30 | 110.2 | 154.3 | 110.2 | 154.3 | 110.2 | 154.3 | 110.2 | 154.3 |
| 45 | 110.2 | 154.3 | 110.2 | 154.3 | 110.2 | 154.30 | 110.2 | 154.3 | 110.2 | 154.3 | 110.2 | 154.3 | 110.2 | 154.3 |
| 50 | 110.2 | 154.3 | 110.2 | 154.3 | 110.2 | 154.30 | 110.2 | 154.3 | 110.2 | 154.3 | 110.2 | 154.3 | 110.2 | 154.3 |
| 55 | 110.2 | 154.3 | 110.2 | 154.3 | 110.2 | 154.30 | 110.2 | 154.3 | 110.2 | 154.3 | 110.2 | 154.3 | 110.2 | 154.3 |
| 60 | 110.2 | 152.2 | 110.2 | 152.8 | 110.2 | 153.20 | 110.2 | 153.0 | 110.2 | 153.2 | 110.2 | 152.8 | 110.2 | 152.4 |
| 65 | 110.2 | 135.8 | 110.2 | 136.5 | 110.2 | 137.10 | 110.2 | 136.9 | 110.2 | 137.1 | 110.2 | 136.7 | 110.2 | 136.3 |
| 70 | 110.2 | 121.8 | 110.2 | 122.9 | 110.2 | 123.50 | 110.2 | 123.4 | 110.2 | 123.7 | 110.2 | 123.3 | 110.2 | 122.9 |
| 75 | | | 110.2 | 111.2 | 110.2 | 112.0 | 110.2 | 111.9 | 110.2 | 112.3 | 110.2 | 111.9 | 111.6 | 111.6 |
| 80 | | | 100.9 | 100.9 | 102.1 | 102.0 | 102.1 | 102.0 | 102.6 | 102.5 | 102.2 | 102.1 | 101.9 | 101.8 |
| 85 | | | | | 93.3 | 93.30 | 93.5 | 93.4 | 94.0 | 94.0 | 93.6 | 93.6 | 93.4 | 93.3 |
| 90 | | | | | 85.4 | 85.40 | 85.8 | 85.8 | 86.5 | 86.5 | 86.2 | 86.1 | 85.9 | 85.8 |
| 95 | | | | | | | 79.0 | 78.9 | 79.8 | 79.8 | 79.5 | 79.4 | 79.3 | 79.2 |
| 100 | | | | | | | 72.7 | 72.6 | 73.8 | 73.7 | 73.6 | 73.5 | 73.4 | 73.3 |
| 105 | | | | | | | | | 68.3 | 68.3 | 68.2 | 68.1 | 68.1 | 68.0 |
| 110 | | | | | | | | | 63.2 | 63.2 | 63.3 | 63.2 | 63.3 | 63.2 |
| 115 | | | | | | | | | | | 58.8 | 58.7 | 58.9 | 58.8 |
| 120 | | | | | | | | | | | 54.5 | 54.5 | 54.8 | 54.8 |
| 125 | | | | | | | | | | | | | 51.1 | 51.0 |
| 130 | | | | | | | | | | | | | 47.4 | 47.4 |
| 135 | | | | | | | | | | | | | | |
| 140 | | | | | | | | | | | | | | |
| 145 | | | | | | | | | | | | | | |
| 150 | | | | | | | | | | | | | | |
| 155 | | | | | | | | | | | | | | |
| 160 | | | | | | | | | | | | | | |
| 165 | | | | | | | | | | | | | | |
| 170 | | | | | | | | | | | | | | |
| 175 | | | | | | | | | | | | | | |
| 180 | | | | | | | | | | | | | | |
| 185 | | | | | | | | | | | | | | |

* Rear counterweight 195,991 lbs

** winches in [1000 lbf]

TLT 13187641

TLT 13189388

Capacities in [1000 lbs]

| | Boom length [ft] | | | | | | | | | | | | |
|-----|------------------|-------|-------|-------|-------|-------|-------|-------|-------|-------|-------|-------|-------|
| | 134 | | 144 | | 154 | | 164 | | 174 | | 184 | | |
| | ** | 110.3 | 154.4 | 110.3 | 154.4 | 110.3 | 154.4 | 110.3 | 154.4 | 110.3 | 154.4 | 110.3 | 154.4 |
| 25 | | | | | | | | | | | | | |
| 30 | 110.2 | 154.3 | 110.2 | 154.3 | 110.2 | 154.3 | | | | | | | |
| 35 | 110.2 | 154.3 | 110.2 | 154.3 | 110.2 | 154.3 | 110.2 | 154.3 | 110.2 | 154.3 | 110.2 | 154.3 | |
| 40 | 110.2 | 154.3 | 110.2 | 154.3 | 110.2 | 154.3 | 110.2 | 154.3 | 110.2 | 154.3 | 110.2 | 154.3 | 110.2 |
| 45 | 110.2 | 154.3 | 110.2 | 154.3 | 110.2 | 154.3 | 110.2 | 154.3 | 110.2 | 154.3 | 110.2 | 154.3 | 110.2 |
| 50 | 110.2 | 154.3 | 110.2 | 154.3 | 110.2 | 154.3 | 110.2 | 154.3 | 110.2 | 154.3 | 110.2 | 154.3 | 110.2 |
| 55 | 110.2 | 154.3 | 110.2 | 154.3 | 110.2 | 154.3 | 110.2 | 154.3 | 110.2 | 154.3 | 110.2 | 154.3 | 110.2 |
| 60 | 110.2 | 151.9 | 110.2 | 151.5 | 110.2 | 151.0 | 110.2 | 154.3 | 110.2 | 149.8 | 110.2 | 149.3 | 110.2 |
| 65 | 110.2 | 135.8 | 110.2 | 135.5 | 110.2 | 134.9 | 110.2 | 134.3 | 110.2 | 133.7 | 110.2 | 133.2 | 110.2 |
| 70 | 110.2 | 122.3 | 110.2 | 122.1 | 110.2 | 121.5 | 110.2 | 120.9 | 110.2 | 120.2 | 110.2 | 119.7 | 110.2 |
| 75 | 110.2 | 111.0 | 110.2 | 110.7 | 110.2 | 110.1 | 109.6 | 109.5 | 108.9 | 108.8 | 108.4 | 108.3 | 108.3 |
| 80 | 101.3 | 101.2 | 101.0 | 100.9 | 100.4 | 100.3 | 99.8 | 99.7 | 99.1 | 99.0 | 98.6 | 98.6 | 98.6 |
| 85 | 92.8 | 92.7 | 92.5 | 92.5 | 91.9 | 91.8 | 91.3 | 91.3 | 90.6 | 90.6 | 90.2 | 90.1 | 90.1 |
| 90 | 85.3 | 85.2 | 85.1 | 85.0 | 84.5 | 84.4 | 83.9 | 83.8 | 83.2 | 83.1 | 82.7 | 82.6 | 82.6 |
| 95 | 78.7 | 78.6 | 78.5 | 78.5 | 77.9 | 77.8 | 77.3 | 77.3 | 76.6 | 76.5 | 76.2 | 76.1 | 76.1 |
| 100 | 72.8 | 72.7 | 72.7 | 72.6 | 72.0 | 72.0 | 71.5 | 71.4 | 70.8 | 70.7 | 70.3 | 70.2 | 70.2 |
| 105 | 67.5 | 67.5 | 67.4 | 67.4 | 66.8 | 66.7 | 66.2 | 66.2 | 65.5 | 65.4 | 65.1 | 65.0 | 65.0 |
| 110 | 62.8 | 62.7 | 62.7 | 62.6 | 62.0 | 62.0 | 61.5 | 61.4 | 60.8 | 60.7 | 60.4 | 60.3 | 60.3 |
| 115 | 58.4 | 58.3 | 58.4 | 58.3 | 57.7 | 57.7 | 57.2 | 57.1 | 56.5 | 56.4 | 56.1 | 56.0 | 56.0 |
| 120 | 54.4 | 54.3 | 54.4 | 54.4 | 53.8 | 53.7 | 53.3 | 53.2 | 52.6 | 52.5 | 52.2 | 52.1 | 52.1 |
| 125 | 50.7 | 50.7 | 50.8 | 50.7 | 50.2 | 50.1 | 49.7 | 49.6 | 49.0 | 48.9 | 48.6 | 48.5 | 48.5 |
| 130 | 47.3 | 47.2 | 47.5 | 47.4 | 46.9 | 46.8 | 46.4 | 46.3 | 45.7 | 45.6 | 45.3 | 45.3 | 45.3 |
| 135 | 44.1 | 44.0 | 44.3 | 44.3 | 43.8 | 43.7 | 43.4 | 43.3 | 42.7 | 42.6 | 42.3 | 42.2 | 42.2 |
| 140 | | | 41.4 | 41.4 | 40.9 | 40.9 | 40.5 | 40.5 | 39.8 | 39.8 | 39.5 | 39.4 | 39.4 |
| 145 | | | 38.7 | 38.6 | 38.3 | 38.2 | 37.9 | 37.8 | 37.2 | 37.1 | 36.9 | 36.8 | 36.8 |
| 150 | | | | | 35.7 | 35.7 | 35.4 | 35.3 | 34.8 | 34.7 | 34.5 | 34.4 | 34.4 |
| 155 | | | | | 33.3 | 33.2 | 33.1 | 33.0 | 32.5 | 32.4 | 32.2 | 32.1 | 32.1 |
| 160 | | | | | | | 30.9 | 30.8 | 30.3 | 30.2 | 30.1 | 30.0 | 30.0 |
| 165 | | | | | | | 28.8 | 28.7 | 28.2 | 28.2 | 28.1 | 28.0 | 28.0 |
| 170 | | | | | | | | | 26.3 | 26.2 | 26.2 | 26.1 | 26.1 |
| 175 | | | | | | | | | 24.4 | 24.3 | 24.4 | 24.3 | 24.3 |
| 180 | | | | | | | | | | | 22.6 | 22.5 | 22.5 |
| 185 | | | | | | | | | | | 20.9 | 20.9 | 20.9 |

* Rear counterweight 195,991 lbs

** winches in [1000 lbf]

TLT 13187641

TLT 13189388

Load chart hydraulic clamshell*

Capacities in [1000 lbs]

| | Boom length [ft] | | | | | | | | | | | | | |
|-----|------------------|-------|-------|-------|-------|-------|-------|-------|-------|-------|-------|-------|-------|-------|
| | 66 | | 76 | | 85 | | 95 | | 105 | | 115 | | 125 | |
| | 110.3 | 154.4 | 110.3 | 154.4 | 110.3 | 154.4 | 110.3 | 154.4 | 110.3 | 154.4 | 110.3 | 154.4 | 110.3 | 154.4 |
| 25 | 167.0 | 166.8 | 167.0 | 166.8 | 167.0 | 166.8 | 167.0 | 166.8 | 167.0 | 166.8 | 167.0 | 166.8 | 167.0 | 166.8 |
| 30 | 167.0 | 166.8 | 167.0 | 166.8 | 167.0 | 166.8 | 167.0 | 166.8 | 167.0 | 166.8 | 167.0 | 166.8 | 167.0 | 166.8 |
| 35 | 167.0 | 166.8 | 167.0 | 166.8 | 167.0 | 166.8 | 167.0 | 166.8 | 167.0 | 166.8 | 167.0 | 166.8 | 167.0 | 166.8 |
| 40 | 167.0 | 166.8 | 167.0 | 166.8 | 167.0 | 166.8 | 167.0 | 166.8 | 167.0 | 166.8 | 167.0 | 166.8 | 167.0 | 166.8 |
| 45 | 167.0 | 166.8 | 167.0 | 166.8 | 167.0 | 166.8 | 167.0 | 166.8 | 167.0 | 166.8 | 167.0 | 166.8 | 167.0 | 166.8 |
| 50 | 167.0 | 166.8 | 167.0 | 166.8 | 167.0 | 166.8 | 167.0 | 166.8 | 167.0 | 166.8 | 167.0 | 166.8 | 167.0 | 166.8 |
| 55 | 167.0 | 166.8 | 167.0 | 166.8 | 167.0 | 166.8 | 167.0 | 166.8 | 167.0 | 166.8 | 167.0 | 166.8 | 167.0 | 166.8 |
| 60 | 152.3 | 152.2 | 152.8 | 152.8 | 153.3 | 153.2 | 153.0 | 153.0 | 153.3 | 153.2 | 152.8 | 152.8 | 152.5 | 152.4 |
| 65 | 135.9 | 135.8 | 136.6 | 136.5 | 137.1 | 137.1 | 136.9 | 136.9 | 137.2 | 137.1 | 136.8 | 136.7 | 136.4 | 136.3 |
| 70 | 121.9 | 121.8 | 123.0 | 122.9 | 123.6 | 123.5 | 123.4 | 123.4 | 123.8 | 123.7 | 123.4 | 123.3 | 123.0 | 122.9 |
| 75 | | | 111.2 | 111.2 | 112.1 | 112.0 | 112.0 | 111.9 | 112.4 | 112.3 | 112.0 | 111.9 | 111.6 | 111.6 |
| 80 | | | 100.9 | 100.9 | 102.1 | 102.0 | 102.1 | 102.0 | 102.6 | 102.5 | 102.2 | 102.1 | 101.9 | 101.8 |
| 85 | | | | | 93.3 | 93.3 | 93.5 | 93.4 | 94.0 | 94.0 | 93.6 | 93.6 | 93.4 | 93.3 |
| 90 | | | | | 85.4 | 85.4 | 85.8 | 85.8 | 86.5 | 86.5 | 86.2 | 86.1 | 85.9 | 85.8 |
| 95 | | | | | | | 79.0 | 78.9 | 79.8 | 79.8 | 79.5 | 79.4 | 79.3 | 79.2 |
| 100 | | | | | | | 72.7 | 72.6 | 73.8 | 73.7 | 73.6 | 73.5 | 73.4 | 73.3 |
| 105 | | | | | | | | | 68.3 | 68.3 | 68.2 | 68.1 | 68.1 | 68.0 |
| 110 | | | | | | | | | 63.2 | 63.2 | 63.3 | 63.2 | 63.3 | 63.2 |
| 115 | | | | | | | | | | | 58.8 | 58.7 | 58.9 | 58.8 |
| 120 | | | | | | | | | | | 54.5 | 54.5 | 54.8 | 54.8 |
| 125 | | | | | | | | | | | | | 51.1 | 51.0 |
| 130 | | | | | | | | | | | | | 47.4 | 47.4 |
| 135 | | | | | | | | | | | | | | |
| 140 | | | | | | | | | | | | | | |
| 145 | | | | | | | | | | | | | | |
| 150 | | | | | | | | | | | | | | |
| 155 | | | | | | | | | | | | | | |
| 160 | | | | | | | | | | | | | | |
| 165 | | | | | | | | | | | | | | |
| 170 | | | | | | | | | | | | | | |
| 175 | | | | | | | | | | | | | | |
| 180 | | | | | | | | | | | | | | |
| 185 | | | | | | | | | | | | | | |

* Rear counterweight 195,991 lbs

** winches in [1000 lbf]

TLT 13187641

TLT 13189388

Capacities in [1000 lbs]

| | Boom length [ft] | | | | | | | | | | | |
|------------|------------------|-------|-------|-------|-------|-------|-------|-------|-------|-------|-------|-------|
| | 134 | | 144 | | 154 | | 164 | | 174 | | 184 | |
| | 110.3 | 154.4 | 110.3 | 154.4 | 110.3 | 154.4 | 110.3 | 154.4 | 110.3 | 154.4 | 110.3 | 154.4 |
| ** | | | | | | | | | | | | |
| 25 | | | | | | | | | | | | |
| 30 | 167.0 | 166.8 | 167.0 | 166.8 | 167.0 | 166.8 | | | | | | |
| 35 | 167.0 | 166.8 | 167.0 | 166.8 | 167.0 | 166.8 | 167.0 | 166.8 | 167.0 | 166.8 | 167.0 | 166.8 |
| 40 | 167.0 | 166.8 | 167.0 | 166.8 | 167.0 | 166.8 | 167.0 | 166.8 | 167.0 | 166.8 | 167.0 | 166.8 |
| 45 | 167.0 | 166.8 | 167.0 | 166.8 | 167.0 | 166.8 | 167.0 | 166.8 | 167.0 | 166.8 | 167.0 | 166.8 |
| 50 | 167.0 | 166.8 | 167.0 | 166.8 | 167.0 | 166.8 | 167.0 | 166.8 | 167.0 | 166.8 | 167.0 | 166.8 |
| 55 | 167.0 | 166.8 | 167.0 | 166.8 | 167.0 | 166.8 | 167.0 | 166.8 | 166.4 | 166.8 | 164.9 | 166.8 |
| 60 | 151.9 | 151.9 | 151.6 | 151.5 | 151.1 | 151.0 | 150.5 | 150.4 | 149.9 | 149.8 | 149.4 | 149.3 |
| 65 | 135.9 | 135.8 | 135.6 | 135.5 | 135.0 | 134.9 | 134.4 | 134.3 | 133.8 | 133.7 | 133.3 | 133.2 |
| 70 | 122.4 | 122.3 | 122.1 | 122.1 | 121.5 | 121.5 | 121.0 | 120.9 | 120.3 | 120.2 | 119.8 | 119.7 |
| 75 | 111.0 | 111.0 | 110.8 | 110.7 | 110.2 | 110.1 | 109.6 | 109.5 | 108.9 | 108.8 | 108.4 | 108.3 |
| 80 | 101.3 | 101.2 | 101.0 | 100.9 | 100.4 | 100.3 | 99.8 | 99.7 | 99.1 | 99.0 | 98.6 | 98.6 |
| 85 | 92.8 | 92.7 | 92.5 | 92.5 | 91.9 | 91.8 | 91.3 | 91.3 | 90.6 | 90.6 | 90.2 | 90.1 |
| 90 | 85.3 | 85.2 | 85.1 | 85.0 | 84.5 | 84.4 | 83.9 | 83.8 | 83.2 | 83.1 | 82.7 | 82.6 |
| 95 | 78.7 | 78.6 | 78.5 | 78.5 | 77.9 | 77.8 | 77.3 | 77.3 | 76.6 | 76.5 | 76.2 | 76.1 |
| 100 | 72.8 | 72.7 | 72.7 | 72.6 | 72.0 | 72.0 | 71.5 | 71.4 | 70.8 | 70.7 | 70.3 | 70.2 |
| 105 | 67.5 | 67.5 | 67.4 | 67.4 | 66.8 | 66.7 | 66.2 | 66.2 | 65.5 | 65.4 | 65.1 | 65.0 |
| 110 | 62.8 | 62.7 | 62.7 | 62.6 | 62.0 | 62.0 | 61.5 | 61.4 | 60.8 | 60.7 | 60.4 | 60.3 |
| 115 | 58.4 | 58.3 | 58.4 | 58.3 | 57.7 | 57.7 | 57.2 | 57.1 | 56.5 | 56.4 | 56.1 | 56.0 |
| 120 | 54.4 | 54.3 | 54.4 | 54.4 | 53.8 | 53.7 | 53.3 | 53.2 | 52.6 | 52.5 | 52.2 | 52.1 |
| 125 | 50.7 | 50.7 | 50.8 | 50.7 | 50.2 | 50.1 | 49.7 | 49.6 | 49.0 | 48.9 | 48.6 | 48.5 |
| 130 | 47.3 | 47.2 | 47.5 | 47.4 | 46.9 | 46.8 | 46.4 | 46.3 | 45.7 | 45.6 | 45.3 | 45.3 |
| 135 | 44.1 | 44.0 | 44.3 | 44.3 | 43.8 | 43.7 | 43.4 | 43.3 | 42.7 | 42.6 | 42.3 | 42.2 |
| 140 | | | 41.4 | 41.4 | 40.9 | 40.9 | 40.5 | 40.5 | 39.8 | 39.8 | 39.5 | 39.4 |
| 145 | | | 38.7 | 38.6 | 38.3 | 38.2 | 37.9 | 37.8 | 37.2 | 37.1 | 36.9 | 36.8 |
| 150 | | | | | 35.7 | 35.7 | 35.4 | 35.3 | 34.8 | 34.7 | 34.5 | 34.4 |
| 155 | | | | | 33.3 | 33.2 | 33.1 | 33.0 | 32.5 | 32.4 | 32.2 | 32.1 |
| 160 | | | | | | | 30.9 | 30.8 | 30.3 | 30.2 | 30.1 | 30.0 |
| 165 | | | | | | | 28.8 | 28.7 | 28.2 | 28.2 | 28.1 | 28.0 |
| 170 | | | | | | | | | 26.3 | 26.2 | 26.2 | 26.1 |
| 175 | | | | | | | | | 24.4 | 24.3 | 24.4 | 24.3 |
| 180 | | | | | | | | | | | 22.6 | 22.5 |
| 185 | | | | | | | | | | | 20.9 | 20.9 |

* Rear counterweight 195,991 lbs

** winches in [1000 lbf]

TLT 13187641

TLT 13189388

Load chart mechanical clamshell pedestal mounted*

Capacities in [1000 lbs]

| Radius [ft] | Boom length [ft] | | | | | | | | | | | | | |
|-------------|------------------|-------|-------|-------|-------|-------|-------|-------|-------|-------|-------|-------|-------|-------|
| | 66 | | 76 | | 85 | | 95 | | 105 | | 115 | | 125 | |
| | 110.3 | 154.4 | 110.3 | 154.4 | 110.3 | 154.4 | 110.3 | 154.4 | 110.3 | 154.4 | 110.3 | 154.4 | 110.3 | 154.4 |
| 25 | 110.2 | 154.4 | 110.2 | 154.4 | 110.2 | 154.4 | 110.2 | 154.4 | 110.2 | 154.4 | | | | |
| 30 | 110.2 | 154.4 | 110.2 | 154.4 | 110.2 | 154.4 | 110.2 | 154.4 | 110.2 | 154.4 | 110.2 | 154.4 | 110.2 | 154.4 |
| 35 | 110.2 | 154.4 | 110.2 | 154.4 | 110.2 | 154.4 | 110.2 | 154.4 | 110.2 | 154.4 | 110.2 | 154.4 | 110.2 | 154.4 |
| 40 | 110.2 | 154.4 | 110.2 | 154.4 | 110.2 | 154.4 | 110.2 | 154.4 | 110.2 | 154.4 | 110.2 | 154.4 | 110.2 | 154.4 |
| 45 | 110.2 | 154.4 | 110.2 | 154.4 | 110.2 | 154.4 | 110.2 | 154.4 | 110.2 | 154.4 | 110.2 | 154.4 | 110.2 | 154.4 |
| 50 | 110.2 | 154.4 | 110.2 | 154.4 | 110.2 | 154.4 | 110.2 | 154.4 | 110.2 | 154.4 | 110.2 | 154.4 | 110.2 | 154.4 |
| 55 | 110.2 | 154.4 | 110.2 | 154.4 | 110.2 | 154.4 | 110.2 | 154.4 | 110.2 | 154.4 | 110.2 | 154.4 | 110.2 | 154.4 |
| 60 | 110.2 | 154.4 | 110.2 | 154.4 | 110.2 | 154.4 | 110.2 | 154.4 | 110.2 | 154.4 | 110.2 | 154.4 | 110.2 | 154.4 |
| 65 | 110.2 | 154.4 | 110.2 | 154.4 | 110.2 | 154.4 | 110.2 | 154.4 | 110.2 | 154.4 | 110.2 | 154.4 | 110.2 | 154.4 |
| 70 | 110.2 | 145.8 | 110.2 | 147.0 | 110.2 | 147.8 | 110.2 | 147.5 | 110.2 | 147.9 | 110.2 | 147.2 | 110.2 | 146.7 |
| 75 | | | 110.2 | 132.8 | 110.2 | 133.8 | 110.2 | 133.6 | 110.2 | 134.0 | 110.2 | 133.4 | 110.2 | 132.9 |
| 80 | | | 110.2 | 120.3 | 110.2 | 121.7 | 110.2 | 121.6 | 110.2 | 122.1 | 110.2 | 121.5 | 110.2 | 121.1 |
| 85 | | | | | 110.2 | 111.0 | 110.2 | 111.1 | 110.2 | 111.8 | 110.2 | 111.2 | 110.2 | 110.8 |
| 90 | | | | | 92.7 | 98.9 | 101.9 | 101.8 | 102.7 | 102.6 | 102.2 | 102.1 | 101.8 | 101.7 |
| 95 | | | | | | | 93.6 | 93.5 | 94.6 | 94.5 | 94.1 | 94.0 | 93.8 | 93.7 |
| 100 | | | | | | | 77.1 | 82.7 | 87.3 | 87.2 | 86.9 | 86.8 | 86.6 | 86.5 |
| 105 | | | | | | | | | 80.6 | 80.6 | 80.4 | 80.3 | 80.2 | 80.1 |
| 110 | | | | | | | | | 66.0 | 71.5 | 74.4 | 74.4 | 74.3 | 74.2 |
| 115 | | | | | | | | | | | 67.7 | 68.9 | 69.0 | 68.9 |
| 120 | | | | | | | | | | | 56.7 | 62.4 | 64.1 | 64.0 |
| 125 | | | | | | | | | | | | | 58.1 | 59.4 |
| 130 | | | | | | | | | | | | | 49.6 | 54.7 |
| 135 | | | | | | | | | | | | | | |
| 140 | | | | | | | | | | | | | | |
| 145 | | | | | | | | | | | | | | |
| 150 | | | | | | | | | | | | | | |
| 155 | | | | | | | | | | | | | | |
| 160 | | | | | | | | | | | | | | |
| 165 | | | | | | | | | | | | | | |
| 170 | | | | | | | | | | | | | | |
| 175 | | | | | | | | | | | | | | |
| 180 | | | | | | | | | | | | | | |
| 185 | | | | | | | | | | | | | | |

* Rear counterweight 195,991 lbs

** winches in [1000 lbf]

TLT 13620714

TLT 13613089

Capacities in [1000 lbs]

| | | Boom length [ft] | | | | | | | | | | | |
|-------------|-----|------------------|-------|-------|-------|-------|-------|-------|-------|-------|-------|-------|-------|
| | | 134 | | 144 | | 154 | | 164 | | 174 | | 184 | |
| | | 110.3 | 154.4 | 110.3 | 154.4 | 110.3 | 154.4 | 110.3 | 154.4 | 110.3 | 154.4 | 110.3 | 154.4 |
| Radius [ft] | 25 | | | | | | | | | | | | |
| | 30 | 110.2 | 154.4 | 110.2 | 154.4 | 110.2 | 154.4 | | | | | | |
| | 35 | 110.2 | 154.4 | 110.2 | 154.4 | 110.2 | 154.4 | 110.2 | 154.4 | 110.2 | 154.4 | 110.2 | 154.4 |
| | 40 | 110.2 | 154.4 | 110.2 | 154.4 | 110.2 | 154.4 | 110.2 | 154.4 | 110.2 | 154.4 | 110.2 | 154.4 |
| | 45 | 110.2 | 154.4 | 110.2 | 154.4 | 110.2 | 154.4 | 110.2 | 154.4 | 110.2 | 154.4 | 110.2 | 154.4 |
| | 50 | 110.2 | 154.4 | 110.2 | 154.4 | 110.2 | 154.4 | 110.2 | 154.4 | 110.2 | 154.4 | 110.2 | 154.4 |
| | 55 | 110.2 | 154.4 | 110.2 | 154.4 | 110.2 | 154.4 | 110.2 | 154.4 | 110.2 | 154.4 | 110.2 | 154.4 |
| | 60 | 110.2 | 154.4 | 110.2 | 154.4 | 110.2 | 154.4 | 110.2 | 154.4 | 110.2 | 154.4 | 110.2 | 154.4 |
| | 65 | 110.2 | 154.4 | 110.2 | 154.4 | 110.2 | 154.4 | 110.2 | 154.0 | 110.2 | 150.8 | 110.2 | 148.0 |
| | 70 | 110.2 | 145.9 | 110.2 | 145.5 | 110.2 | 143.5 | 110.2 | 140.7 | 110.2 | 137.7 | 110.2 | 135.2 |
| | 75 | 110.2 | 132.1 | 110.2 | 131.7 | 110.2 | 130.9 | 110.2 | 129.1 | 110.2 | 126.3 | 110.2 | 124.0 |
| | 80 | 110.2 | 120.2 | 110.2 | 119.9 | 110.2 | 119.0 | 110.2 | 118.3 | 110.2 | 116.3 | 110.2 | 114.1 |
| | 85 | 110.0 | 109.9 | 109.7 | 109.6 | 108.8 | 108.7 | 108.1 | 108.0 | 107.1 | 107.0 | 105.0 | 105.4 |
| | 90 | 101.0 | 100.9 | 100.7 | 100.6 | 99.8 | 99.7 | 99.1 | 99.0 | 97.8 | 98.0 | 94.3 | 97.4 |
| | 95 | 93.0 | 92.9 | 92.7 | 92.6 | 91.8 | 91.7 | 91.1 | 91.0 | 90.1 | 90.0 | 85.4 | 89.4 |
| | 100 | 85.8 | 85.7 | 85.6 | 85.5 | 84.7 | 84.6 | 84.0 | 83.9 | 83.0 | 82.9 | 79.6 | 82.3 |
| | 105 | 79.4 | 79.3 | 79.2 | 79.1 | 78.3 | 78.2 | 77.6 | 77.5 | 76.6 | 76.5 | 74.7 | 75.9 |
| | 110 | 73.6 | 73.5 | 73.5 | 73.4 | 72.6 | 72.5 | 71.9 | 71.8 | 70.9 | 70.8 | 70.2 | 70.2 |
| | 115 | 68.3 | 68.2 | 68.2 | 68.1 | 67.3 | 67.3 | 66.6 | 66.5 | 65.6 | 65.5 | 65.1 | 65.0 |
| | 120 | 63.5 | 63.4 | 63.4 | 63.3 | 62.6 | 62.5 | 61.9 | 61.8 | 60.9 | 60.8 | 60.4 | 60.3 |
| | 125 | 59.0 | 58.9 | 59.0 | 58.9 | 58.2 | 58.1 | 57.5 | 57.4 | 56.5 | 56.4 | 56.0 | 55.9 |
| | 130 | 54.8 | 54.8 | 55.0 | 54.9 | 54.2 | 54.1 | 53.5 | 53.4 | 52.5 | 52.4 | 52.1 | 52.0 |
| | 135 | 50.9 | 50.8 | 51.2 | 51.1 | 50.4 | 50.3 | 49.8 | 49.7 | 48.9 | 48.8 | 48.4 | 48.3 |
| | 140 | | | 47.7 | 47.6 | 46.9 | 46.9 | 46.4 | 46.3 | 45.4 | 45.3 | 45.0 | 44.9 |
| | 145 | | | 44.3 | 44.2 | 43.7 | 43.6 | 43.2 | 43.1 | 42.2 | 42.1 | 41.8 | 41.7 |
| 150 | | | | | 40.6 | 40.5 | 40.2 | 40.1 | 39.3 | 39.2 | 38.9 | 38.8 | |
| 155 | | | | | 37.7 | 37.6 | 37.3 | 37.2 | 36.5 | 36.4 | 36.1 | 36.0 | |
| 160 | | | | | | | 34.7 | 34.6 | 33.8 | 33.7 | 33.5 | 33.4 | |
| 165 | | | | | | | 32.1 | 32.0 | 31.3 | 31.3 | 31.1 | 31.0 | |
| 170 | | | | | | | | | 29.0 | 28.9 | 28.8 | 28.7 | |
| 175 | | | | | | | | | 26.7 | 26.6 | 26.6 | 26.5 | |
| 180 | | | | | | | | | | | 24.5 | 24.4 | |
| 185 | | | | | | | | | | | 22.4 | 22.3 | |

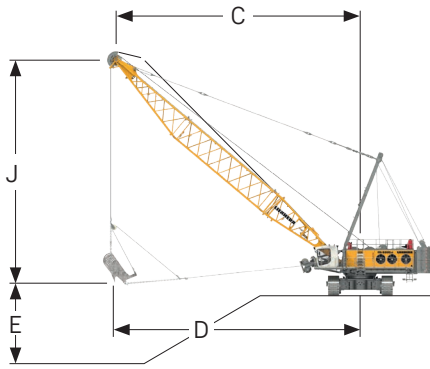
* Rear counterweight 195,991 lbs

** winches in [1000 lbf]

TLT 13620714

TLT 13613089

Dragline operation



Digging diagramm

C = Radius / dumping radius

D = Max. digging radius = approx. C + 1/3 to 1/2 J

E* = Digging depth = approx. 40-50% of C

J = Height to centre rope pulley boom head

*The depth of cut, casting distance and digging reach may vary considerably depending on digging conditions, design of bucket and operator's skill. Maximum digging depths are attainable under ideal conditions and cannot be guaranteed.

Load chart for dragline operation (dragline boom head)

Capacities in [1000 lbs]

| alpha [°] | Boom length [ft] | | | | | | | | | | | | | | | | | |
|-----------|------------------|------|--------------|-------|------|--------------|-------|-------|--------------|-------|-------|--------------|-------|-------|--------------|-------|-------|--------------|
| | 115 | | | | | | 125 | | | | | | 134 | | | | | |
| | 110.3 | | | 154.4 | | | 110.3 | | | 154.4 | | | 110.3 | | | 154.4 | | |
| ** | C | J | [lbs x 1000] | C | J | [lbs x 1000] | C | J | [lbs x 1000] | C | J | [lbs x 1000] | C | J | [lbs x 1000] | C | J | [lbs x 1000] |
| | [ft] | [ft] | | [ft] | [ft] | | [ft] | [ft] | | [ft] | [ft] | | [ft] | [ft] | | [ft] | [ft] | |
| 45 | 88.4 | 95.3 | 104.9 | 88.4 | 95.3 | 105.0 | 95.3 | 102.3 | 94.2 | 95.3 | 102.3 | 94.1 | 102.3 | 109.1 | 84.5 | 102.3 | 109.1 | 84.4 |
| 40 | 95.4 | 88.1 | 94.4 | 95.4 | 88.1 | 94.4 | 102.9 | 94.4 | 84.5 | 102.9 | 94.4 | 84.5 | 110.5 | 100.8 | 75.7 | 110.5 | 100.8 | 75.6 |
| 35 | 101.7 | 80.2 | 86.2 | 101.7 | 80.2 | 86.2 | 109.9 | 86.0 | 76.9 | 109.9 | 77.1 | 76.8 | 117.9 | 91.6 | 68.7 | 117.9 | 91.6 | 68.7 |
| 30 | 107.3 | 72.0 | 79.9 | 107.3 | 72.0 | 79.8 | 115.9 | 77.0 | 71.1 | 115.9 | 77.0 | 71.1 | 124.5 | 81.8 | 63.2 | 124.5 | 81.8 | 63.1 |

* Rear counterweight 195,991 lbs

** winches in [1000 lbf]

TLT 13640146

Capacities in [1000 lbs]

| alpha [°] | Boom length [ft] | | | | | | | | | | | |
|-----------|------------------|-------|--------------|-------|-------|--------------|-------|-------|--------------|-------|-------|--------------|
| | 144 | | | | 154 | | | | 164 | | | |
| | 110.3 | | | 154.4 | | | 110.3 | | | 110.3 | | |
| ** | C | J | [lbs x 1000] | C | J | [lbs x 1000] | C | J | [lbs x 1000] | C | J | [lbs x 1000] |
| | [ft] | [ft] | | [ft] | [ft] | | [ft] | [ft] | | [ft] | [ft] | |
| 45 | 109.3 | 116.2 | 76.8 | 109.3 | 116.2 | 76.7 | 116.2 | 123.1 | 69.3 | 123.1 | 130.1 | 62.9 |
| 40 | 118.0 | 107.0 | 68.6 | 118.0 | 107.0 | 68.5 | 125.5 | 113.5 | 61.6 | 133.1 | 119.7 | 55.6 |
| 35 | 125.9 | 97.3 | 62.1 | 125.9 | 97.3 | 62.0 | 134.0 | 102.9 | 55.6 | 142.0 | 108.6 | 50.0 |
| 30 | 132.9 | 86.8 | 57.1 | 132.9 | 86.8 | 57.0 | 141.5 | 91.7 | 50.8 | 150.0 | 96.7 | 45.6 |

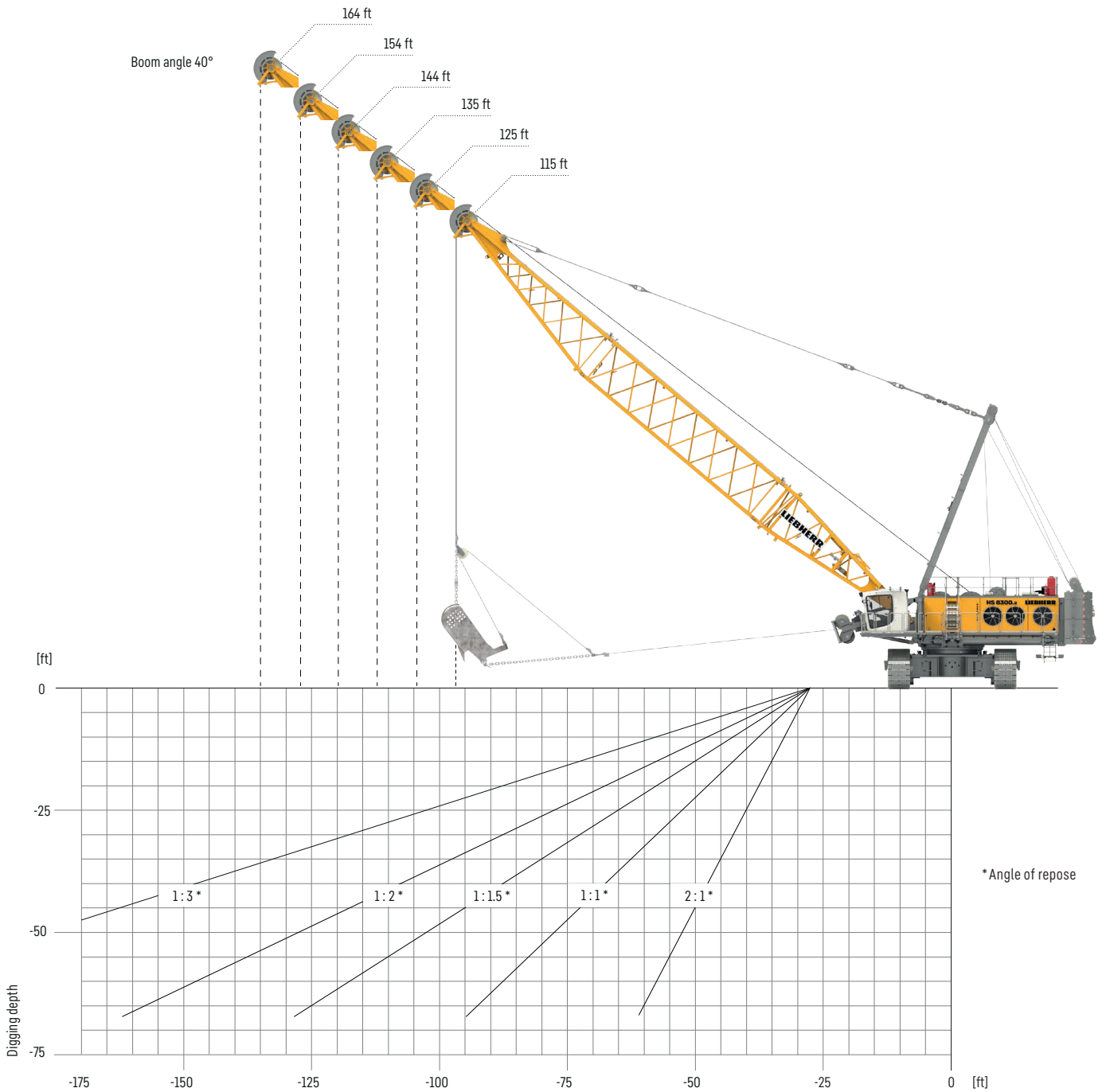
* Rear counterweight 195,991 lbs

** winches in [1000 lbf]

TLT 13640146



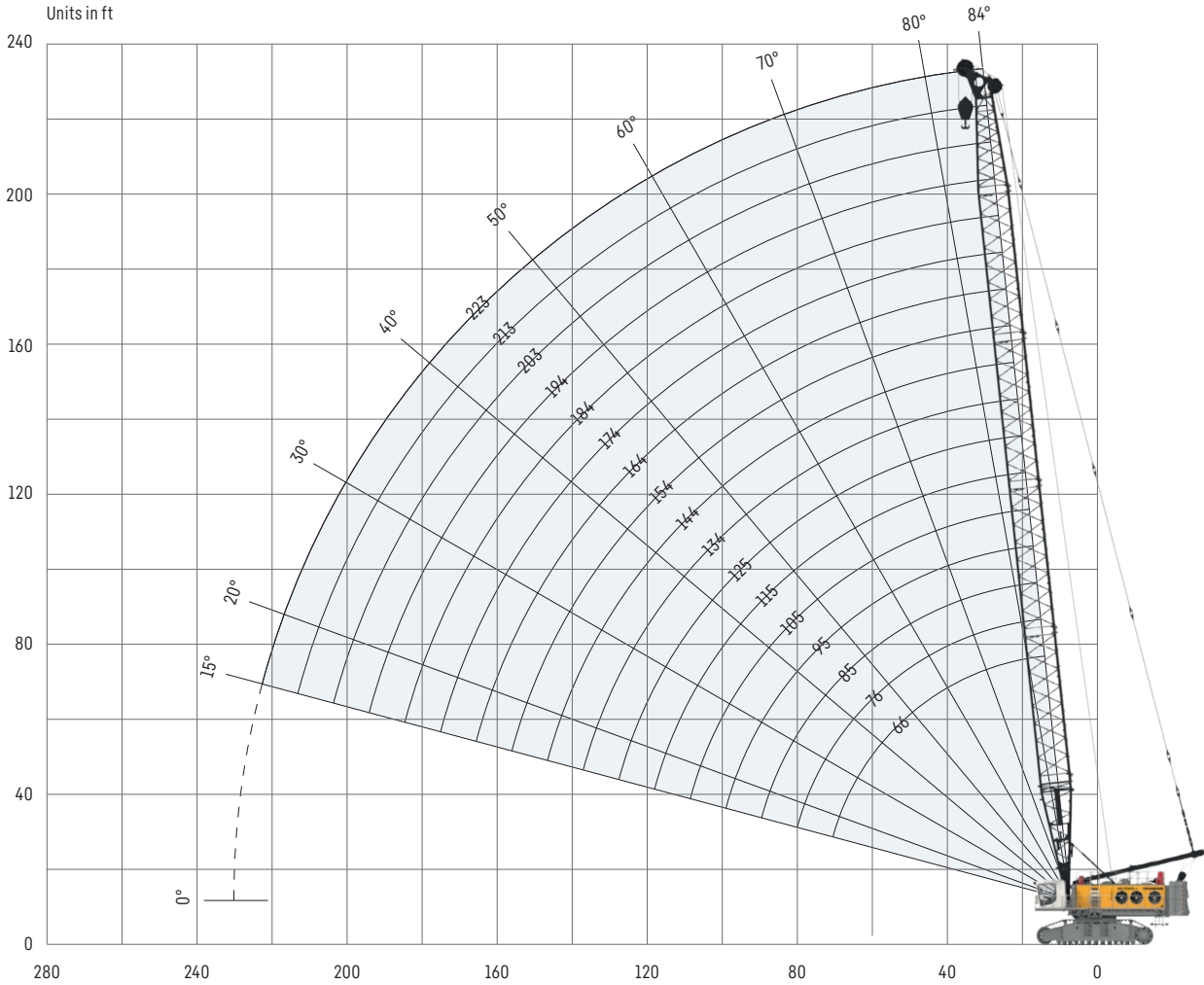
Planning aid (dragline boom head)



Lifting operation

Main boom

with 218,258 lbs rear counterweight and 79,366 lbs carbody counterweight



Main boom configuration

| Boom section | Amount of boom sections | | | | | | | | | | | | | | | | |
|-------------------------|-------------------------|-----------|-----------|-----------|------------|------------|------------|------------|------------|------------|------------|------------|------------|------------|------------|------------|------------|
| | | | | | | | | * | | | | * | | | | * | |
| Boom foot 33 ft | 1 | 1 | 1 | 1 | 1 | 1 | 1 | 1 | 1 | 1 | 1 | 1 | 1 | 1 | 1 | 1 | 1 |
| Boom section 10 ft | | 1 | | 1 | | 1 | | 1 | | 1 | | 1 | | 1 | | 1 | |
| Boom section 20 ft | | | 1 | 1 | | | | 1 | 1 | | | 1 | 1 | | | 1 | |
| Boom section 40 ft | | | | | 1 | 1 | 1 | 1 | 2 | 2 | 2 | 2 | 3 | 3 | 3 | 3 | 4 |
| Boom head 33 ft | 1 | 1 | 1 | 1 | 1 | 1 | 1 | 1 | 1 | 1 | 1 | 1 | 1 | 1 | 1 | 1 | 1 |
| Boom length [ft] | 66 | 76 | 85 | 95 | 105 | 115 | 125 | 134 | 144 | 154 | 164 | 174 | 184 | 194 | 203 | 213 | 223 |
| Auxiliary jib | ✓ | ✓ | ✓ | ✓ | ✓ | ✓ | ✓ | ✓ | ✓ | ✓ | ✓ | ✓ | ✓ | ✓ | ✓ | ✓ | ✓ |

* preferred boom combinations



Auxiliary jib 110,381 lbf

The maximum capacity of the auxiliary jib is 110,231 lbs. The corresponding load chart is programmed in the LML system.



Auxiliary jib 154,444 lbf

The maximum capacity of the auxiliary jib is 154,323 lbs. The corresponding load chart is programmed in the LML system.

Load chart for lifting operation**

Capacities in [1000 lbs]

| * | Boom length [ft] | | | | | | | | | | | | | | | | | |
|-----|------------------|-------|-------|-------|-------|-------|-------|-------|-------|-------|-------|-------|-------|-------|-------|-------|-------|-------|
| | 66 | | 76 | | 85 | | 95 | | 105 | | 115 | | 125 | | 134 | | 144 | |
| | 218.3 | 173.3 | 218.3 | 173.3 | 218.3 | 173.3 | 218.3 | 173.3 | 218.3 | 173.3 | 218.3 | 173.3 | 218.3 | 173.3 | 218.3 | 173.3 | 218.3 | 173.3 |
| 18 | 646.0 | 646.0 | | | | | | | | | | | | | | | | |
| 20 | 646.0 | 646.0 | 646.0 | 646.0 | | | | | | | | | | | | | | |
| 25 | 645.6 | 561.0 | 643.2 | 541.7 | 621.7 | 523.4 | 601.2 | 506.0 | 582.0 | 489.7 | 563.8 | 474.2 | 546.3 | 459.2 | | | | |
| 30 | 531.0 | 446.3 | 515.7 | 433.3 | 501.3 | 421.1 | 487.2 | 409.1 | 474.1 | 398.0 | 461.3 | 387.0 | 448.9 | 376.4 | 437.1 | 366.2 | 425.7 | 356.4 |
| 35 | 440.0 | 368.9 | 429.0 | 359.6 | 418.5 | 350.8 | 408.1 | 341.8 | 398.6 | 333.7 | 388.9 | 325.4 | 379.6 | 317.4 | 370.5 | 309.6 | 361.9 | 302.1 |
| 40 | 363.0 | 304.3 | 363.3 | 304.6 | 358.1 | 299.4 | 349.9 | 292.4 | 342.7 | 286.2 | 335.0 | 279.6 | 327.7 | 273.3 | 320.4 | 267.0 | 313.6 | 261.1 |
| 45 | 307.1 | 256.7 | 307.4 | 257.1 | 307.7 | 257.4 | 305.4 | 254.5 | 299.7 | 249.7 | 293.4 | 244.2 | 287.4 | 239.0 | 281.3 | 233.7 | 275.8 | 228.9 |
| 50 | 264.9 | 220.8 | 265.3 | 221.2 | 265.6 | 221.6 | 265.2 | 221.2 | 265.4 | 220.6 | 260.2 | 216.0 | 255.2 | 211.6 | 250.0 | 207.0 | 245.3 | 203.0 |
| 55 | 231.9 | 192.7 | 232.4 | 193.2 | 232.8 | 193.6 | 232.4 | 193.2 | 232.6 | 193.5 | 232.0 | 192.8 | 228.8 | 189.2 | 224.3 | 185.2 | 220.3 | 181.7 |
| 60 | 205.3 | 170.0 | 205.9 | 170.7 | 206.5 | 171.2 | 206.1 | 170.8 | 206.4 | 171.1 | 205.7 | 170.4 | 205.2 | 169.9 | 202.8 | 166.9 | 199.4 | 163.9 |
| 65 | 183.2 | 151.1 | 184.1 | 152.1 | 184.8 | 152.7 | 184.5 | 152.4 | 184.8 | 152.7 | 184.2 | 152.1 | 183.6 | 151.6 | 182.8 | 150.7 | 181.6 | 148.8 |
| 70 | 162.3 | 134.8 | 165.8 | 136.4 | 166.6 | 137.2 | 166.4 | 137.0 | 166.8 | 137.4 | 166.1 | 136.7 | 165.6 | 136.2 | 164.8 | 135.4 | 164.4 | 135.0 |
| 75 | | | 150.1 | 122.9 | 151.2 | 124.0 | 151.0 | 123.8 | 151.5 | 124.3 | 150.9 | 123.7 | 150.4 | 123.2 | 149.5 | 122.4 | 149.2 | 122.0 |
| 80 | | | 136.1 | 110.9 | 137.8 | 112.6 | 137.7 | 112.5 | 138.3 | 113.1 | 137.7 | 112.5 | 137.3 | 112.1 | 136.4 | 111.2 | 136.1 | 110.9 |
| 85 | | | | | 126.0 | 102.4 | 126.1 | 102.6 | 126.9 | 103.3 | 126.3 | 102.8 | 125.9 | 102.3 | 125.0 | 101.5 | 124.7 | 101.2 |
| 90 | | | | | 115.2 | 93.0 | 115.9 | 93.8 | 116.8 | 94.7 | 116.2 | 94.2 | 115.9 | 93.8 | 115.0 | 93.0 | 114.8 | 92.7 |
| 95 | | | | | | | 106.7 | 86.7 | 107.8 | 87.0 | 107.3 | 86.7 | 107.0 | 86.7 | 106.2 | 86.2 | 106.0 | 85.9 |
| 100 | | | | | | | 98.1 | 79.5 | 99.7 | 80.9 | 99.4 | 80.5 | 99.1 | 80.2 | 98.3 | 79.4 | 98.1 | 79.2 |
| 105 | | | | | | | | | 92.4 | 74.6 | 92.2 | 74.3 | 92.0 | 74.1 | 91.2 | 73.3 | 91.1 | 73.1 |
| 110 | | | | | | | | | 86.0 | 68.6 | 86.3 | 68.7 | 86.2 | 68.6 | 85.5 | 67.8 | 85.3 | 67.7 |
| 115 | | | | | | | | | | | 80.3 | 63.5 | 80.3 | 63.5 | 79.6 | 62.8 | 79.5 | 62.7 |
| 120 | | | | | | | | | | | 74.6 | 58.5 | 74.9 | 58.8 | 74.3 | 58.2 | 74.2 | 58.2 |
| 125 | | | | | | | | | | | | | 69.8 | 54.5 | 69.3 | 54.0 | 69.4 | 54.0 |
| 130 | | | | | | | | | | | | | | 65.0 | 50.3 | 64.7 | 50.0 | 50.2 |
| 135 | | | | | | | | | | | | | | | 60.4 | 46.0 | 60.7 | 46.6 |
| 140 | | | | | | | | | | | | | | | | | 56.8 | 43.2 |
| 145 | | | | | | | | | | | | | | | | | 53.1 | 40.0 |
| 150 | | | | | | | | | | | | | | | | | | |
| 155 | | | | | | | | | | | | | | | | | | |
| 160 | | | | | | | | | | | | | | | | | | |
| 165 | | | | | | | | | | | | | | | | | | |
| 170 | | | | | | | | | | | | | | | | | | |
| 175 | | | | | | | | | | | | | | | | | | |
| 180 | | | | | | | | | | | | | | | | | | |
| 185 | | | | | | | | | | | | | | | | | | |
| 190 | | | | | | | | | | | | | | | | | | |
| 195 | | | | | | | | | | | | | | | | | | |
| 200 | | | | | | | | | | | | | | | | | | |
| 205 | | | | | | | | | | | | | | | | | | |
| 210 | | | | | | | | | | | | | | | | | | |
| 215 | | | | | | | | | | | | | | | | | | |
| 220 | | | | | | | | | | | | | | | | | | |
| 225 | | | | | | | | | | | | | | | | | | |

* Rear counterweight in 1000 lbs

** 110,381 lbf winch

☐ + 79.4 lbs carbony counterweight

TLT 13187643

Capacities in [1000 lbs]

| * Radius [ft] | Boom length [ft] | | | | | | | | | | | | | | | |
|------------------|------------------|-------|-------|-------|-------|-------|-------|-------|-------|-------|-------|-------|-------|-------|-------|-------|
| | 154 | | 164 | | 174 | | 184 | | 194 | | 203 | | 213 | | 223 | |
| | 218.3 | 173.3 | 218.3 | 173.3 | 218.3 | 173.3 | 218.3 | 173.3 | 218.3 | 173.3 | 218.3 | 173.3 | 218.3 | 173.3 | 218.3 | 173.3 |
| 18 | | | | | | | | | | | | | | | | |
| 20 | | | | | | | | | | | | | | | | |
| 25 | | | | | | | | | | | | | | | | |
| 30 | 414.8 | 347.1 | 404.2 | 338.0 | 394.1 | 329.3 | | | | | | | | | | |
| 35 | 353.5 | 294.9 | 345.2 | 287.7 | 337.3 | 280.9 | 329.5 | 274.1 | 322.1 | 267.7 | 314.8 | 261.3 | 306.2 | 255.2 | 287.4 | 249.1 |
| 40 | 306.8 | 255.2 | 300.1 | 249.4 | 293.6 | 243.7 | 287.3 | 238.2 | 281.2 | 232.9 | 275.2 | 227.6 | 269.4 | 222.5 | 263.6 | 217.4 |
| 45 | 270.1 | 223.9 | 264.5 | 219.1 | 259.0 | 214.3 | 253.8 | 209.7 | 248.6 | 205.1 | 243.5 | 200.6 | 238.5 | 196.2 | 233.6 | 191.8 |
| 50 | 240.4 | 198.7 | 235.7 | 194.5 | 230.9 | 190.3 | 226.5 | 186.4 | 222.0 | 182.4 | 217.5 | 178.5 | 213.1 | 174.6 | 208.9 | 170.8 |
| 55 | 216.0 | 177.9 | 211.9 | 174.2 | 207.7 | 170.5 | 203.8 | 167.1 | 199.8 | 163.5 | 195.8 | 160.0 | 191.9 | 156.5 | 188.2 | 153.2 |
| 60 | 195.5 | 160.5 | 191.8 | 157.2 | 188.1 | 153.8 | 184.6 | 150.8 | 181.0 | 147.6 | 177.5 | 144.4 | 174.0 | 141.2 | 170.6 | 138.2 |
| 65 | 178.1 | 145.6 | 174.8 | 142.7 | 171.3 | 139.6 | 168.3 | 136.9 | 165.0 | 133.9 | 161.8 | 131.0 | 158.5 | 128.1 | 155.5 | 125.3 |
| 70 | 163.1 | 132.9 | 160.1 | 130.1 | 156.9 | 127.3 | 154.1 | 124.8 | 151.1 | 122.0 | 148.1 | 119.4 | 145.1 | 116.6 | 142.3 | 114.1 |
| 75 | 148.3 | 121.1 | 147.3 | 119.2 | 144.3 | 116.5 | 141.8 | 114.3 | 138.9 | 111.7 | 136.2 | 109.2 | 133.3 | 106.6 | 130.8 | 104.3 |
| 80 | 135.2 | 110.0 | 134.4 | 109.2 | 133.2 | 107.1 | 130.9 | 105.0 | 128.2 | 102.5 | 125.6 | 100.2 | 122.9 | 97.7 | 120.6 | 95.6 |
| 85 | 123.8 | 100.3 | 123.0 | 99.5 | 122.1 | 98.5 | 121.2 | 96.7 | 118.6 | 94.4 | 116.2 | 92.2 | 113.7 | 89.8 | 111.5 | 87.8 |
| 90 | 113.8 | 91.8 | 113.1 | 91.0 | 112.1 | 90.0 | 111.5 | 89.4 | 110.1 | 87.1 | 107.8 | 85.8 | 105.4 | 83.6 | 103.3 | 81.7 |
| 95 | 105.0 | 85.0 | 104.3 | 84.3 | 103.3 | 83.3 | 102.7 | 82.7 | 101.7 | 81.3 | 100.2 | 79.3 | 97.9 | 77.2 | 95.9 | 75.4 |
| 100 | 97.2 | 78.3 | 96.4 | 77.6 | 95.4 | 76.6 | 94.8 | 76.0 | 93.8 | 75.0 | 92.9 | 73.4 | 91.1 | 71.4 | 89.2 | 69.7 |
| 105 | 90.1 | 72.2 | 89.4 | 71.5 | 88.4 | 70.5 | 87.8 | 70.0 | 86.8 | 69.0 | 86.7 | 68.1 | 85.6 | 66.1 | 83.9 | 64.4 |
| 110 | 84.5 | 66.8 | 83.7 | 66.1 | 82.7 | 65.1 | 82.2 | 64.5 | 81.2 | 63.5 | 80.3 | 62.6 | 79.3 | 61.2 | 78.3 | 59.7 |
| 115 | 78.7 | 61.8 | 78.0 | 61.1 | 77.0 | 60.1 | 76.4 | 59.6 | 75.4 | 58.6 | 74.5 | 57.7 | 73.5 | 56.7 | 72.8 | 55.3 |
| 120 | 73.4 | 57.3 | 72.7 | 56.6 | 71.7 | 55.6 | 71.2 | 55.1 | 70.2 | 54.1 | 69.3 | 53.2 | 68.2 | 52.2 | 67.5 | 51.2 |
| 125 | 68.5 | 53.2 | 67.9 | 52.5 | 66.9 | 51.5 | 66.4 | 51.0 | 65.4 | 50.0 | 64.5 | 49.1 | 63.4 | 48.1 | 62.7 | 47.4 |
| 130 | 64.1 | 49.3 | 63.4 | 48.7 | 62.5 | 47.7 | 62.0 | 47.2 | 61.0 | 46.2 | 60.1 | 45.4 | 59.0 | 44.3 | 58.3 | 43.6 |
| 135 | 59.9 | 45.8 | 59.3 | 45.2 | 58.4 | 44.2 | 57.9 | 43.8 | 56.9 | 42.8 | 56.0 | 41.9 | 55.0 | 40.8 | 54.3 | 40.1 |
| 140 | 56.1 | 42.5 | 55.5 | 41.9 | 54.6 | 41.0 | 54.1 | 40.5 | 53.1 | 39.5 | 52.3 | 38.7 | 51.2 | 37.6 | 50.5 | 36.9 |
| 145 | 52.5 | 39.4 | 52.0 | 38.9 | 51.0 | 38.0 | 50.6 | 37.5 | 49.6 | 36.5 | 48.8 | 35.7 | 47.7 | 34.6 | 47.0 | 33.9 |
| 150 | 49.1 | 36.5 | 48.7 | 36.0 | 47.8 | 35.1 | 47.4 | 34.7 | 46.4 | 33.8 | 45.5 | 32.9 | 44.5 | 31.8 | 43.8 | 31.2 |
| 155 | 45.9 | 33.7 | 45.5 | 33.4 | 44.7 | 32.5 | 44.3 | 32.1 | 43.3 | 31.1 | 42.5 | 30.3 | 41.4 | 29.3 | 40.8 | 28.6 |
| 160 | | | 42.6 | 30.8 | 41.8 | 30.0 | 41.4 | 29.7 | 40.5 | 28.7 | 39.7 | 27.9 | 38.6 | 26.8 | 38.0 | 26.2 |
| 165 | | | 39.7 | 28.3 | 39.0 | 27.6 | 38.8 | 27.3 | 37.8 | 26.4 | 37.0 | 25.6 | 36.0 | 24.5 | 35.3 | 23.9 |
| 170 | | | | 36.4 | 25.4 | 36.2 | 25.2 | 35.3 | 24.2 | 34.5 | 23.5 | 33.4 | 22.4 | 32.8 | 21.8 | |
| 175 | | | | | 33.9 | 23.2 | 33.8 | 23.1 | 32.9 | 22.2 | 32.1 | 21.4 | 31.1 | 20.4 | 30.5 | 19.8 |
| 180 | | | | | | | 31.5 | 21.1 | 30.6 | 20.2 | 29.9 | 19.5 | 28.9 | 18.5 | 28.3 | 17.9 |
| 185 | | | | | | | 29.2 | 19.1 | 28.4 | 18.3 | 27.8 | 17.7 | 26.7 | 16.6 | 26.2 | 16.1 |
| 190 | | | | | | | | | 26.4 | 16.5 | 25.7 | 15.9 | 24.7 | 14.9 | 24.2 | 14.4 |
| 195 | | | | | | | | | 24.3 | 14.8 | 23.8 | 14.2 | 22.8 | 13.3 | 22.3 | 12.7 |
| 200 | | | | | | | | | | | 21.9 | 12.6 | 21.0 | 11.7 | 20.5 | 11.2 |
| 205 | | | | | | | | | | | 20.1 | 11.0 | 19.2 | 10.2 | 18.8 | 9.7 |
| 210 | | | | | | | | | | | | 17.5 | 8.7 | 17.1 | 8.3 | |
| 215 | | | | | | | | | | | | 15.8 | 7.2 | 15.5 | 6.9 | |
| 220 | | | | | | | | | | | | | | 14.0 | 5.5 | |
| 225 | | | | | | | | | | | | | | | 12.4 | |

* Rear counterweight in 1000 lbs
 ** 110,381 lbf winch
 ▬ + 79.4 lbs carbody counterweight
 TLT 13187643

Load chart for lifting operation**

Capacities in [1000 lbs]

| * | Boom length [ft] | | | | | | | | | | | | | | | | | |
|-----|------------------|-------|-------|-------|-------|-------|-------|-------|-------|-------|-------|-------|-------|-------|-------|-------|-------|-------|
| | 66 | | 76 | | 85 | | 95 | | 105 | | 115 | | 125 | | 134 | | 144 | |
| | 218.3 | 173.3 | 218.3 | 173.3 | 218.3 | 173.3 | 218.3 | 173.3 | 218.3 | 173.3 | 218.3 | 173.3 | 218.3 | 173.3 | 218.3 | 173.3 | 218.3 | 173.3 |
| 18 | 416.8 | 416.8 | | | | | | | | | | | | | | | | |
| 20 | 416.8 | 416.8 | 416.8 | 416.8 | | | | | | | | | | | | | | |
| 25 | 416.8 | 416.8 | 416.8 | 416.8 | 416.8 | 416.8 | 416.8 | 416.8 | 416.8 | 416.8 | 416.8 | 416.8 | 416.8 | 416.8 | | | | |
| 30 | 416.8 | 416.8 | 416.8 | 416.8 | 416.8 | 416.8 | 416.8 | 408.9 | 416.8 | 397.8 | 416.8 | 386.8 | 416.8 | 376.2 | 416.8 | 366.1 | 416.8 | 356.3 |
| 35 | 416.8 | 368.8 | 416.8 | 359.4 | 416.8 | 350.6 | 407.9 | 341.7 | 398.4 | 333.6 | 388.7 | 325.3 | 379.4 | 317.3 | 370.3 | 309.4 | 361.7 | 302.0 |
| 40 | 362.9 | 304.2 | 363.2 | 304.5 | 358.0 | 299.3 | 349.8 | 292.2 | 342.6 | 286.1 | 334.9 | 279.5 | 327.5 | 273.1 | 320.3 | 266.8 | 313.4 | 260.9 |
| 45 | 306.9 | 256.6 | 307.3 | 256.9 | 307.6 | 257.2 | 305.3 | 254.3 | 299.6 | 249.5 | 293.2 | 244.1 | 287.2 | 238.9 | 281.2 | 233.6 | 275.6 | 228.8 |
| 50 | 264.8 | 220.7 | 265.2 | 221.1 | 265.5 | 221.5 | 265.1 | 221.1 | 265.3 | 220.5 | 260.1 | 215.8 | 255.0 | 211.5 | 249.8 | 206.9 | 245.2 | 202.9 |
| 55 | 231.8 | 192.6 | 232.3 | 193.1 | 232.7 | 193.5 | 232.3 | 193.1 | 232.5 | 193.4 | 231.9 | 192.7 | 228.7 | 189.0 | 224.2 | 185.0 | 220.2 | 181.6 |
| 60 | 205.2 | 169.9 | 205.8 | 170.6 | 206.4 | 171.1 | 206.0 | 170.7 | 206.3 | 171.0 | 205.6 | 170.3 | 205.1 | 169.8 | 202.7 | 166.8 | 199.3 | 163.8 |
| 65 | 183.1 | 151.0 | 184.1 | 152.0 | 184.7 | 152.6 | 184.4 | 152.3 | 184.7 | 152.6 | 184.1 | 152.0 | 183.5 | 151.5 | 182.7 | 150.6 | 181.5 | 148.7 |
| 70 | 162.6 | 134.8 | 165.7 | 136.3 | 166.6 | 137.2 | 166.3 | 136.9 | 166.7 | 137.3 | 166.0 | 136.6 | 165.6 | 136.1 | 164.7 | 135.3 | 164.3 | 134.9 |
| 75 | | | 150.0 | 122.8 | 151.1 | 123.9 | 150.9 | 123.8 | 151.4 | 124.3 | 150.8 | 123.6 | 150.3 | 123.1 | 149.4 | 122.3 | 149.1 | 121.9 |
| 80 | | | 136.0 | 110.8 | 137.7 | 112.5 | 137.6 | 112.4 | 138.3 | 113.0 | 137.6 | 112.4 | 137.2 | 112.0 | 136.3 | 111.1 | 136.0 | 110.8 |
| 85 | | | | | 125.9 | 103.3 | 126.1 | 103.4 | 126.8 | 104.1 | 126.2 | 103.5 | 125.8 | 103.1 | 124.9 | 102.2 | 124.6 | 101.9 |
| 90 | | | | | 115.2 | 94.2 | 115.8 | 94.6 | 116.7 | 95.4 | 116.2 | 94.9 | 115.8 | 94.5 | 114.9 | 93.7 | 114.7 | 93.4 |
| 95 | | | | | | | 107.4 | 86.7 | 107.7 | 87.7 | 107.4 | 87.2 | 107.4 | 86.9 | 106.9 | 86.1 | 106.6 | 85.8 |
| 100 | | | | | | | 99.0 | 79.5 | 100.4 | 80.8 | 100.0 | 80.4 | 99.7 | 80.1 | 98.9 | 79.3 | 98.7 | 79.1 |
| 105 | | | | | | | | | 93.1 | 74.5 | 92.8 | 74.2 | 92.6 | 74.0 | 91.8 | 73.2 | 91.6 | 73.1 |
| 110 | | | | | | | | | 86.2 | 68.6 | 86.2 | 68.6 | 86.1 | 68.5 | 85.4 | 67.7 | 85.3 | 67.6 |
| 115 | | | | | | | | | | | 80.2 | 63.4 | 80.2 | 63.4 | 79.5 | 62.7 | 79.5 | 62.6 |
| 120 | | | | | | | | | | | 74.5 | 58.4 | 74.8 | 58.7 | 74.2 | 58.1 | 74.2 | 58.1 |
| 125 | | | | | | | | | | | | | 69.7 | 54.4 | 69.2 | 53.9 | 69.3 | 53.9 |
| 130 | | | | | | | | | | | | | | 64.9 | 50.2 | 64.7 | 49.9 | 50.1 |
| 135 | | | | | | | | | | | | | | | 60.4 | 46.2 | 60.6 | 46.5 |
| 140 | | | | | | | | | | | | | | | | | 56.7 | 43.1 |
| 145 | | | | | | | | | | | | | | | | | 53.0 | 39.9 |
| 150 | | | | | | | | | | | | | | | | | | |
| 155 | | | | | | | | | | | | | | | | | | |
| 160 | | | | | | | | | | | | | | | | | | |
| 165 | | | | | | | | | | | | | | | | | | |
| 170 | | | | | | | | | | | | | | | | | | |
| 175 | | | | | | | | | | | | | | | | | | |
| 180 | | | | | | | | | | | | | | | | | | |
| 185 | | | | | | | | | | | | | | | | | | |
| 190 | | | | | | | | | | | | | | | | | | |
| 195 | | | | | | | | | | | | | | | | | | |
| 200 | | | | | | | | | | | | | | | | | | |
| 205 | | | | | | | | | | | | | | | | | | |
| 210 | | | | | | | | | | | | | | | | | | |
| 215 | | | | | | | | | | | | | | | | | | |
| 220 | | | | | | | | | | | | | | | | | | |
| 225 | | | | | | | | | | | | | | | | | | |

* Rear counterweight in 1000 lbs
 ** 110,381 lbf winch
 ☐ + 79.4 lbs carbody counterweight
 TLT 13187643

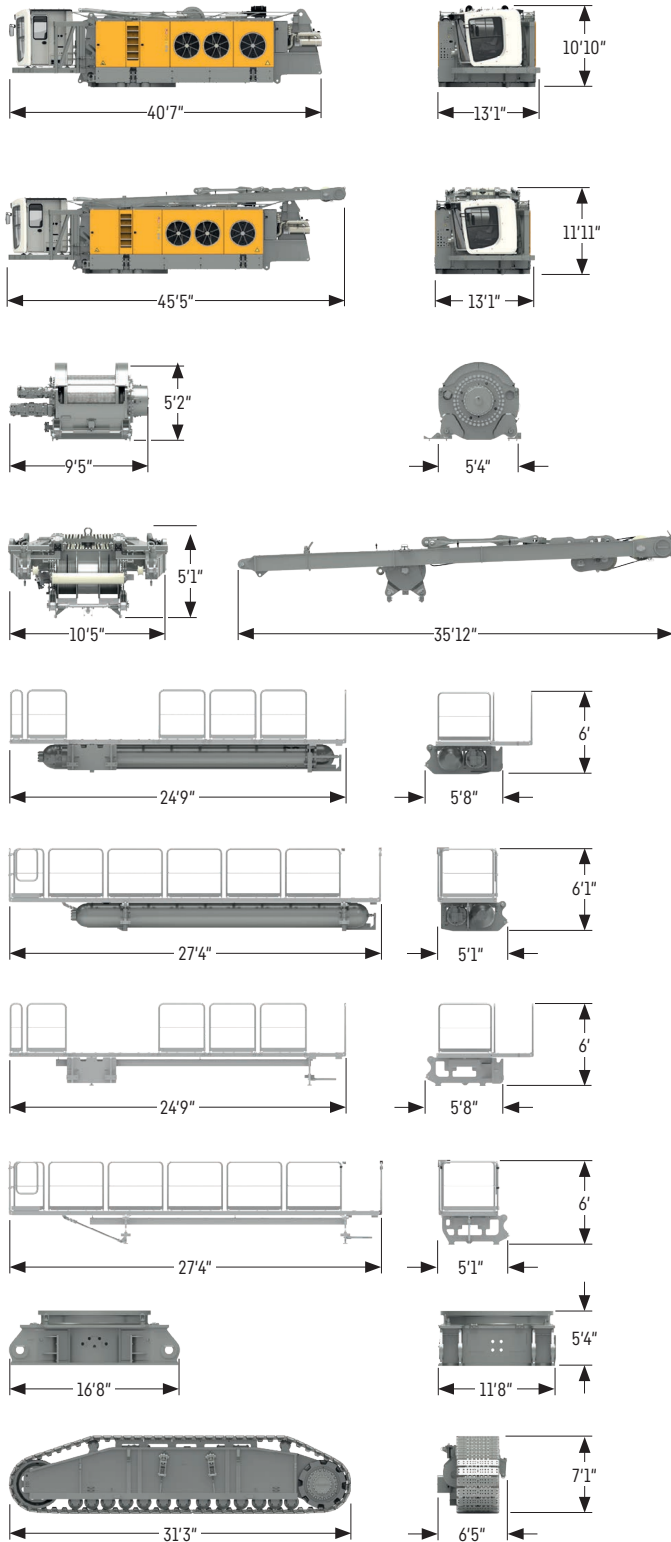
Capacities in [1000 lbs]

| * Radius [ft] | Boom length [ft] | | | | | | | | | | | | | | | |
|------------------|------------------|-------|-------|-------|-------|-------|-------|-------|-------|-------|-------|-------|-------|-------|-------|-------|
| | 154 | | 164 | | 174 | | 184 | | 194 | | 203 | | 213 | | 223 | |
| | 218.3 | 173.3 | 218.3 | 173.3 | 218.3 | 173.3 | 218.3 | 173.3 | 218.3 | 173.3 | 218.3 | 173.3 | 218.3 | 173.3 | 218.3 | 173.3 |
| 18 | | | | | | | | | | | | | | | | |
| 20 | | | | | | | | | | | | | | | | |
| 25 | | | | | | | | | | | | | | | | |
| 30 | 414.7 | 346.9 | 404.1 | 337.8 | 394.0 | 329.1 | | | | | | | | | | |
| 35 | 353.3 | 294.7 | 345.1 | 287.6 | 337.2 | 280.7 | 329.4 | 274.0 | 322.0 | 267.6 | 314.6 | 261.2 | 305.1 | 255.1 | 276.3 | 248.9 |
| 40 | 306.6 | 255.0 | 300.0 | 249.2 | 293.5 | 243.6 | 287.2 | 238.1 | 281.1 | 232.7 | 275.0 | 227.4 | 269.2 | 222.3 | 263.4 | 217.2 |
| 45 | 269.9 | 223.8 | 264.4 | 218.9 | 258.9 | 214.1 | 253.6 | 209.5 | 248.5 | 205.0 | 243.3 | 200.4 | 238.3 | 196.0 | 233.4 | 191.7 |
| 50 | 240.3 | 198.6 | 235.5 | 194.4 | 230.8 | 190.2 | 226.3 | 186.3 | 221.8 | 182.3 | 217.4 | 178.3 | 213.0 | 174.4 | 208.7 | 170.7 |
| 55 | 215.9 | 177.8 | 211.7 | 174.1 | 207.5 | 170.4 | 203.6 | 166.9 | 199.6 | 163.4 | 195.7 | 159.9 | 191.8 | 156.4 | 188.0 | 153.0 |
| 60 | 195.4 | 160.3 | 191.7 | 157.1 | 187.9 | 153.7 | 184.5 | 150.7 | 180.9 | 147.4 | 177.4 | 144.3 | 173.8 | 141.1 | 170.5 | 138.1 |
| 65 | 178.0 | 145.5 | 174.7 | 142.5 | 171.2 | 139.4 | 168.1 | 136.7 | 164.8 | 133.7 | 161.6 | 130.8 | 158.4 | 127.9 | 155.3 | 125.2 |
| 70 | 163.0 | 132.7 | 160.0 | 130.0 | 156.8 | 127.1 | 154.0 | 124.7 | 150.9 | 121.9 | 148.0 | 119.2 | 145.0 | 116.5 | 142.2 | 114.0 |
| 75 | 148.2 | 121.0 | 147.1 | 119.1 | 144.2 | 116.4 | 141.6 | 114.1 | 138.8 | 111.5 | 136.0 | 109.0 | 133.2 | 107.4 | 130.6 | 105.1 |
| 80 | 135.1 | 109.9 | 134.3 | 109.1 | 133.1 | 107.4 | 130.7 | 105.7 | 128.0 | 103.3 | 125.5 | 101.0 | 122.8 | 98.5 | 120.4 | 96.4 |
| 85 | 123.7 | 101.0 | 122.9 | 100.3 | 122.0 | 99.3 | 121.1 | 97.4 | 118.5 | 95.1 | 116.1 | 92.9 | 113.5 | 90.6 | 111.3 | 88.6 |
| 90 | 113.7 | 92.5 | 113.0 | 91.7 | 112.0 | 90.8 | 111.3 | 90.0 | 110.0 | 87.8 | 107.7 | 85.7 | 106.1 | 83.5 | 104.0 | 81.6 |
| 95 | 105.7 | 84.9 | 105.0 | 84.2 | 104.0 | 83.2 | 103.4 | 82.6 | 102.4 | 81.2 | 100.9 | 79.2 | 98.5 | 77.0 | 96.6 | 75.2 |
| 100 | 97.8 | 78.2 | 97.1 | 77.5 | 96.1 | 76.5 | 95.5 | 75.9 | 94.5 | 74.9 | 93.6 | 73.3 | 91.7 | 71.2 | 89.9 | 69.5 |
| 105 | 90.7 | 72.2 | 90.0 | 71.4 | 89.0 | 70.4 | 88.4 | 69.9 | 87.4 | 68.9 | 86.6 | 68.0 | 85.5 | 65.9 | 83.8 | 64.3 |
| 110 | 84.4 | 66.7 | 83.6 | 66.0 | 82.6 | 65.0 | 82.1 | 64.4 | 81.1 | 63.4 | 80.2 | 62.5 | 79.2 | 61.1 | 78.2 | 59.5 |
| 115 | 78.6 | 61.7 | 77.9 | 61.0 | 76.9 | 60.0 | 76.3 | 59.5 | 75.3 | 58.5 | 74.4 | 57.6 | 73.4 | 56.6 | 72.6 | 55.1 |
| 120 | 73.3 | 57.2 | 72.6 | 56.5 | 71.6 | 55.5 | 71.1 | 55.0 | 70.1 | 54.0 | 69.2 | 53.1 | 68.1 | 52.1 | 67.4 | 51.1 |
| 125 | 68.4 | 53.1 | 67.8 | 52.4 | 66.8 | 51.4 | 66.3 | 50.9 | 65.3 | 49.9 | 64.4 | 49.0 | 63.3 | 48.0 | 62.6 | 47.2 |
| 130 | 64.0 | 49.3 | 63.3 | 48.6 | 62.4 | 47.6 | 61.9 | 47.1 | 60.9 | 46.1 | 60.0 | 45.3 | 58.9 | 44.2 | 58.2 | 43.5 |
| 135 | 59.8 | 45.7 | 59.2 | 45.1 | 58.3 | 44.1 | 57.8 | 43.7 | 56.8 | 42.6 | 55.9 | 41.8 | 54.9 | 40.7 | 54.1 | 40.0 |
| 140 | 56.0 | 42.4 | 55.4 | 41.8 | 54.5 | 40.9 | 54.0 | 40.4 | 53.0 | 39.4 | 52.2 | 38.6 | 51.1 | 37.5 | 50.4 | 36.8 |
| 145 | 52.4 | 39.3 | 51.9 | 38.8 | 51.0 | 37.9 | 50.5 | 37.4 | 49.5 | 36.4 | 48.7 | 35.6 | 47.6 | 34.5 | 46.9 | 33.8 |
| 150 | 49.0 | 36.4 | 48.6 | 35.9 | 47.7 | 35.0 | 47.3 | 34.6 | 46.3 | 33.6 | 45.4 | 32.8 | 44.4 | 31.7 | 43.7 | 31.1 |
| 155 | 45.8 | 33.6 | 45.4 | 33.3 | 44.6 | 32.4 | 44.2 | 32.0 | 43.2 | 31.0 | 42.4 | 30.2 | 41.3 | 29.1 | 40.7 | 28.5 |
| 160 | | | 42.5 | 30.7 | 41.7 | 29.9 | 41.3 | 29.6 | 40.4 | 28.6 | 39.6 | 27.8 | 38.5 | 26.7 | 37.8 | 26.1 |
| 165 | | | 39.6 | 28.2 | 38.9 | 27.5 | 38.7 | 27.2 | 37.7 | 26.3 | 36.9 | 25.5 | 35.8 | 24.4 | 35.2 | 23.8 |
| 170 | | | | 36.3 | 25.3 | 36.1 | 25.1 | 35.2 | 24.1 | 34.4 | 23.3 | 33.3 | 22.3 | 32.7 | 21.7 | |
| 175 | | | | 33.8 | 23.1 | 33.7 | 23.0 | 32.8 | 22.1 | 32.0 | 21.3 | 31.0 | 20.3 | 30.4 | 19.7 | |
| 180 | | | | | | | 31.4 | 21.0 | 30.5 | 20.1 | 29.8 | 19.4 | 28.7 | 18.4 | 28.2 | 17.8 |
| 185 | | | | | | | 29.1 | 19.0 | 28.3 | 18.2 | 27.7 | 17.6 | 26.6 | 16.5 | 26.1 | 16.0 |
| 190 | | | | | | | | | 26.3 | 16.4 | 25.6 | 15.8 | 24.6 | 14.8 | 24.1 | 14.3 |
| 195 | | | | | | | | | 24.2 | 14.7 | 23.7 | 14.1 | 22.7 | 13.2 | 22.2 | 12.6 |
| 200 | | | | | | | | | | | 21.8 | 12.5 | 20.9 | 11.6 | 20.4 | 11.1 |
| 205 | | | | | | | | | | | 20.0 | 10.9 | 19.1 | 10.0 | 18.7 | 9.6 |
| 210 | | | | | | | | | | | | | 17.4 | 8.6 | 17.0 | 8.2 |
| 215 | | | | | | | | | | | | | 15.7 | 7.1 | 15.4 | 6.8 |
| 220 | | | | | | | | | | | | | | | 13.9 | 5.4 |
| 225 | | | | | | | | | | | | | | | 12.3 | |

* Rear counterweight in 1000 lbs
 ** 110,381 lbf winch
 L + 79.4 lbs carbody counterweight
 TLT 13187643

Transport dimensions and weights

Basic machine and main boom (2724.35)



Basic machine

without HD undercarriage, boom, boom backstops, A-frame, main winches (2x 154,444 lbf), platforms and counterweight

| | |
|--------|-------------|
| Weight | lbs 159,174 |
|--------|-------------|

Basic machine

with A-frame, boom backstops, main winches (2x 154,444 lbf) without wire rope (820 ft), without platforms, HD undercarriage, counterweight

| | |
|--------|-------------|
| Weight | lbs 254,634 |
|--------|-------------|

Main winches (2x)

| | |
|---|-------------|
| Weight winch 110,381 lbf without wire ropes | lbs 26,896 |
| Wire rope 46 mm | lbs/ft 7.66 |
| Weight winch 154,444 lbf without wire ropes | lbs 29,321 |
| Wire rope 50 mm | lbs/ft 9.0 |

A-frame incl. boom winch

| | |
|--------|------------|
| Weight | lbs 32,408 |
|--------|------------|

Platform with Pactronic® (left) option

| | |
|--------|------------|
| Weight | lbs 18,960 |
|--------|------------|

Platform with Pactronic® (right) option

| | |
|--------|------------|
| Weight | lbs 18,519 |
|--------|------------|

Standard platform (left)

| | |
|--------|-----------|
| Weight | lbs 3,527 |
|--------|-----------|

Standard platform (right)

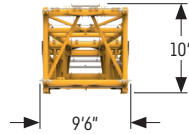
| | |
|--------|-----------|
| Weight | lbs 3,086 |
|--------|-----------|

Centre section of undercarriage

| | |
|--------|------------|
| Weight | lbs 80,755 |
|--------|------------|

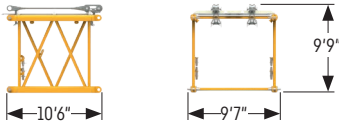
Crawlers

| | |
|--|-------------|
| Weight of crawler left (track pads 3'11") | lbs 102,294 |
| Weight of crawler right (track pads 3'11") | lbs 102,294 |



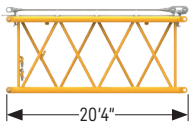
Boom foot (2724.35)

| | |
|--------|------------|
| Width | ft 9.5 |
| Weight | lbs 18,916 |



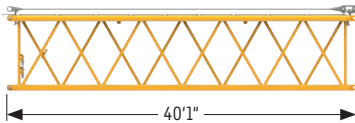
Boom section 10 ft (2724.35)

| | |
|--------|-----------|
| Width | ft 9.6 |
| Weight | lbs 4,034 |



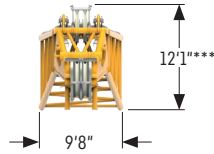
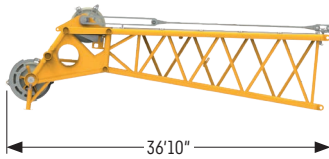
Boom section 20 ft (2724.35)

| | |
|--------|-----------|
| Width | ft 9.6 |
| Weight | lbs 6,195 |



Boom section 40 ft (2724.35)

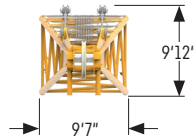
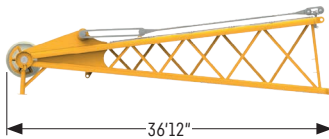
| | |
|--------|------------|
| Width | ft 9.6 |
| Weight | lbs 10,626 |



Boom head* (2724.35)

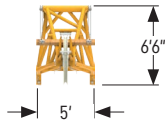
| | |
|----------|------------|
| Width | ft 9.6 |
| Weight** | lbs 24,427 |

* Steel sheaves
 ** Including pendant ropes, without auxiliary equipment
 *** with dismantled boom back sheave 11.1 ft



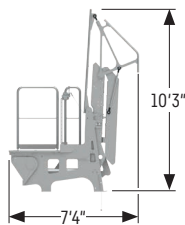
Boom head - dragline

| | |
|--------|------------|
| Weight | lbs 15,939 |
|--------|------------|



Auxiliary jib

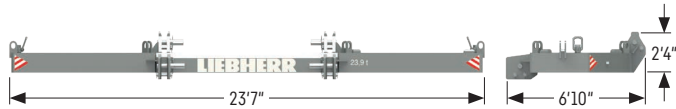
| | |
|--------|-----------|
| Weight | lbs 3,241 |
|--------|-----------|



Machine access

| | |
|--------|-----------|
| Weight | lbs 1,720 |
|--------|-----------|

Counterweight



Counterweight (1x)

| | | |
|--------|------|--------|
| Width | inch | 82 |
| Weight | lbs | 53,462 |



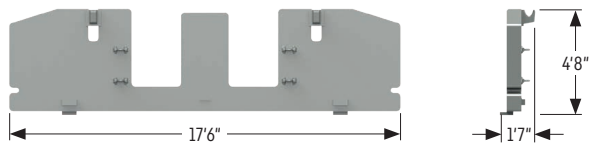
Counterweight (4x)

| | | |
|--------|------|--------|
| Width | inch | 60 |
| Weight | lbs | 29,873 |



Counterweight (4x)

| | | |
|--------|------|--------|
| Width | inch | 60 |
| Weight | lbs | 11,023 |



Carbody counterweight (4x)

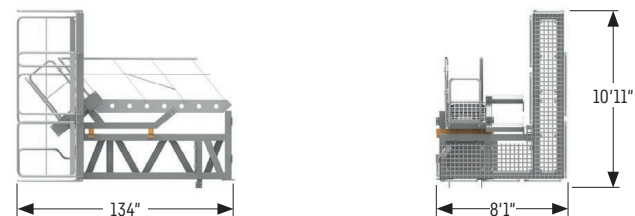
| | | |
|--------|------|--------|
| Width | inch | 19 |
| Weight | lbs | 19,996 |

Cabin



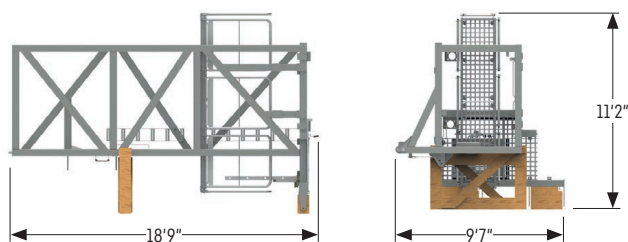
Cabin

| | | |
|--------|-----|-------|
| Weight | lbs | 4,608 |
|--------|-----|-------|



Cabin extension I

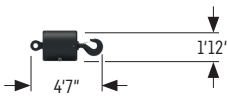
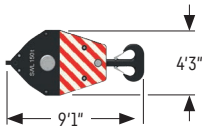
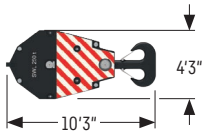
| | | |
|--------|-----|-------|
| Weight | lbs | 4,740 |
|--------|-----|-------|



Cabin extension II

| | | |
|--------|-----|-------|
| Weight | lbs | 4,453 |
|--------|-----|-------|

Hooks for 110,381 lbf winch



300 t (330 USt) hook block - 4 sheaves

| | |
|--------|-----------|
| Width | inch 33 |
| Weight | lbs 8,818 |

150 t (165 USt) hook block - 1 sheave

| | |
|--------|-----------|
| Width | inch 25 |
| Weight | lbs 6,614 |

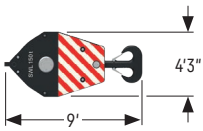
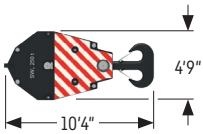
50 t (55 USt) single hook

| | |
|--------|-----------|
| Width | inch 24 |
| Weight | lbs 3,527 |

Rope reeving and max. load capacity [1000 lbs]

| Hooks | 1 | 2 | 3 | 4 | 5 | 6 | 7 | 8 |
|-----------------------------|------|-------|-------|-------|-------|-------|-------|-------|
| 300 t (330 USt) - 4 sheaves | 86.6 | 171.5 | 254.8 | 336.4 | 416.4 | 494.7 | 571.4 | 645.9 |
| 150 t (165 USt) - 1 sheave | 86.6 | 171.5 | 254.8 | | | | | |
| 50 t (55 USt) single hook | 86.6 | | | | | | | |

Hooks for 154,444 lbf winch



250 t (275 USt) hook block - 2 sheaves

| | |
|--------|-----------|
| Width | inch 19 |
| Weight | lbs 9,789 |

150 t (165 USt) hook block - 1 sheave

| | |
|--------|-----------|
| Width | inch 19 |
| Weight | lbs 6,614 |

70 t (77 USt) single hook

| | |
|--------|-----------|
| Width | inch 24 |
| Weight | lbs 3,682 |

Rope reeving and capacity [1000 lbs]

| Hooks | 1 | 2 | 3 | 4 |
|-----------------------------|-------|-------|-------|-------|
| 250 t (275 USt) - 2 sheaves | 107.3 | 212.5 | 315.7 | 416.8 |
| 150 t (165 USt) - 1 sheave | 107.3 | 212.5 | 315.7 | |
| 70 t (77 USt) single hook | 107.3 | | | |

Liebherr-Werk Nenzing GmbH · Dr. Hans Liebherr Str. 1 · 6710 Nenzing, Austria
Phone +43 50809 41-473 · crawler.crane@liebherr.com · www.liebherr.com
facebook.com/LiebherrConstruction

Liebherr USA, Co. · 7075 Bennington Street · Houston, TX 77028-5812
Phone (713) 636-4050 · crawler.cranes.usa@liebherr.com · www.liebherr.com
facebook.com/LiebherrConstruction