
R 930 Litronic

LIEBHERR

Crawler excavator

Generation
8

Operating weight
32,300 kg / 71,210 lb

Engine
241HP / 180 kW
Tier 4 Final

Bucket capacity
1.25–2.15 m³ /
1.63–2.81 yd³



Experience the progress

R 930

① Safety

- Panoramic visibility with no obstructions and camera on the rear and the right side equipment
- Lifiable console for easy and safe access to cab
- ROPS-certified cab structure: rollover protection
- Emergency exit via the rear cab window whatever the configuration of the excavator
- Right window and windshield in laminated and tinted glass

② Equipment

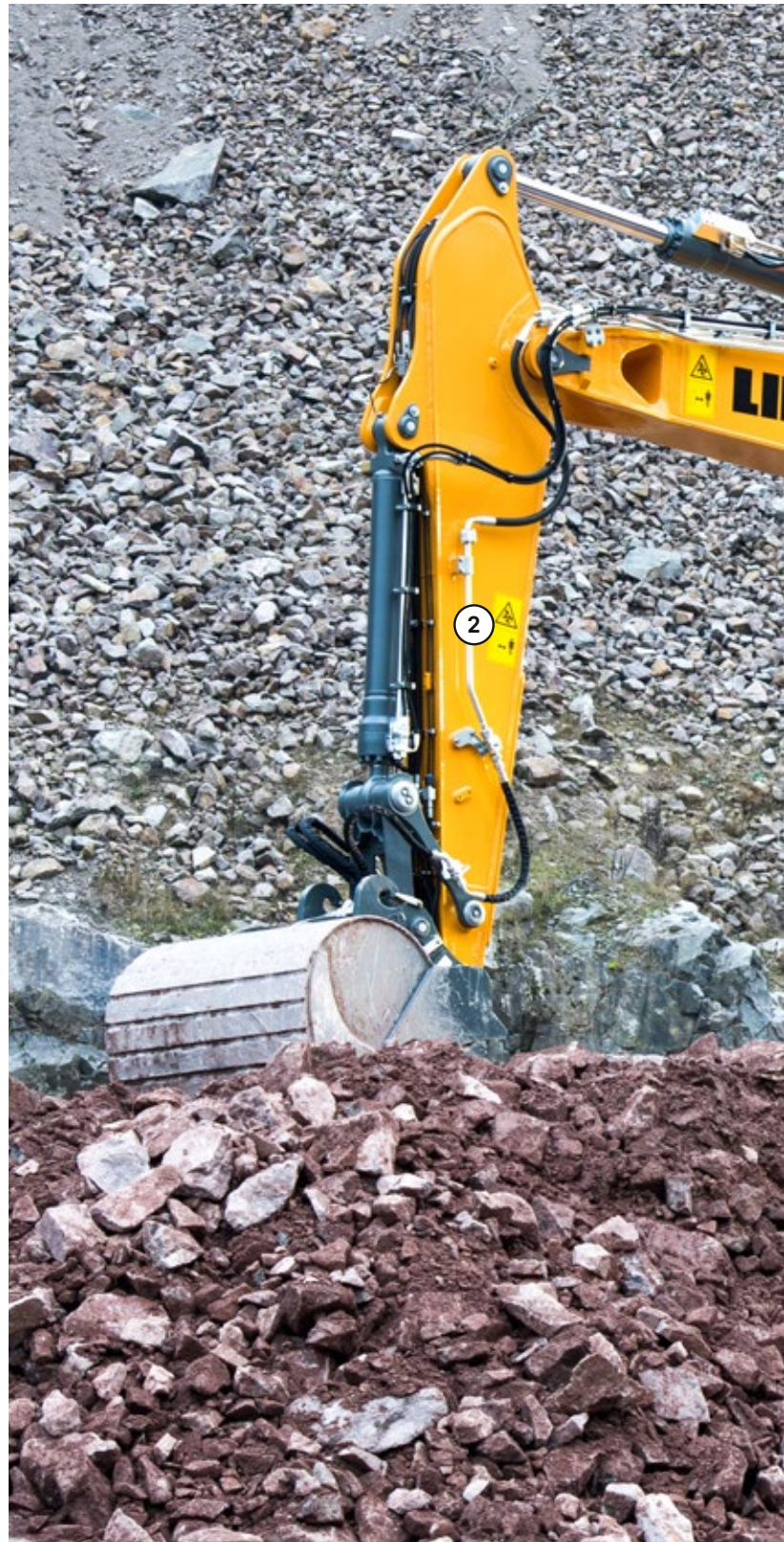
- Large choice of stick
- Safety check valves for hoist and stick cylinders
- Guaranteed maintenance thanks to automatic centralized lubrication system (option)

③ Maintenance

- Innovative servicing concept, with service points accessible from ground level
- Lateral access to uppercarriage and large maintenance platform
- Engine oil, hydraulic oil, fuel and urea levels visible on the display

④ Comfort

- Spacious, air-conditioned work space
- Pneumatic seat with vertical and horizontal suspension
- Easy-to-use high resolution 9" color touchscreen
- Seat belt 3", orange color
- LED lighting as standard



⑤ Engine

- Liebherr engine that conforms with the US EPA Tier 4 Final exhaust emissions standard
- Automatic engine speed increase / decrease controlled by proximity sensors in the joysticks

⑥ Undercarriage

- Robust, reliable X-frame undercarriage, easy to secure thanks to its integrated eyelets
- Easy maintenance
- Maintenance-free travel gear and track rollers with lifetime lubrication
- Extra storage as an option



Technical data

Engine

Rating	
per SAE J1349	241 HP (180 kW) at 1,800 rpm
per ISO 9249	245 HP (180 kW) at 1,800 rpm
Torque	1,255 Nm at 1,350 rpm / 926 lbf ft at 1,350 rpm
Model	Liebherr D934 A7-25
Type	4 cylinder in-line
Bore	122 mm / 4.8 in
Stroke	150 mm / 5.9 in
Displacement	7.0 l / 427 in³
Engine operation	4-stroke diesel Common-Rail Turbo-charged and after-cooler
Exhaust gas treatment	Tier 4 Final DOC + SCR Passive regeneration by thermo management
Cooling system	Water-cooled and oil cooler, after-cooled and fuel cooled
Air cleaner	Dry-type air cleaner with pre-cleaner
Fuel tank	620 l / 164 gal
Urea tank	90 l / 24 gal
Electrical system	
Voltage	24 V
Batteries	2 x 135 Ah / 12 V
Alternator	Three-phase current 24 V / 140 A
Engine idling	Sensor controlled

Hydraulic controls

Power distribution	Via control valves, simultaneous and independent actuation of undercarriage, swing drive and equipment
Electric servo circuit	Electro-hydraulic control
Equipment and swing	Proportional via joystick levers
Travel	- Proportional control via foot pedals or removable levers - Automatic or manual speed adjustment
Additional functions	Proportional regulation via foot pedals or mini-joystick

Hydraulic system

Hydraulic system	Positive Control hydraulic system. Demand-based, double independent pump flows Features high system dynamics and sensitivity provided by integrated system controlling Independent circuit for rotation
Hydraulic pumps	
For equipment and travel drive	Liebherr, variable displacement, swashplate double pump
Max. flow	2 x 265 l/min. / 2 x 70 gpm
Max. pressure	380 bar / 5,511 psi
For swing drive	Swashplate pump, closed-loop circuit
Max. flow	200 l/min. / 53 gpm
Max. pressure	400 bar / 5,802 psi
Pump management	Electronic management synchronous to the control block
Hydraulic tank	239 l / 63 gal
Hydraulic system	max. 475 l / max. 126 gal
Filtration	1 main return filter with integrated partial micro filtration (10 µm / 1,250 mesh)
Cooling system	Compact cooler, consisting of a water cooler, with hydraulic oil cooler, gearbox oil cooler, fuel cooler and after-cooler cores and hydrostatically driven fan
MODE selection	Adjustment of engine and hydraulic performance via a mode pre-selector to match application, e.g. for especially economical and environmentally friendly operation or for maximum digging performance and heavy-duty jobs
Engine speed and performance setting	Stepless adjustment of engine output and hydraulic power via engine speed

Swing drive

Drive	Liebherr swashplate motor with integrated brake valve and torque control
Transmission	Liebherr compact planetary reduction gears
Swing ring	Liebherr, sealed race ball bearing swing ring, internal teeth
Swing speed	0-10.1 rpm stepless
Swing torque	99 kNm / 73,019 lbf ft
Holding brake	Wet multi-disc (spring applied, pressure released)



Cab

Cab	ROPS safety cab structure (roll-over protection system according to ISO 12117-2:2008) with windscreen, totally or partially retractable (only upper part), under cab roof, LED work headlights integrated in the ceiling, a door with a sliding window (can be opened on both sides), large storing box and several stowing possibilities, shock-absorbing suspension, laminated right hand side and roof windows, all windows tinted, separate extensible window shades for the sunroof window and windscreen, cigarette lighter and 24 V plug, 12 V plug, cup holder, mobile phone storage net
Operator's seat	Liebherr-Comfort seat, airsprung with automatic weight adjustment, vertical and longitudinal seat damping including consoles and joysticks. Seat and armrests adjustable separately and in combination (adjustable in length, height and inclination), seat heating as standard
Arm consoles	Oscillating consoles with seat, tiltable console left
Operation and displays	Large high-resolution operating unit, intuitive, color display with touchscreen, video-compatible, numerous setting, control and monitoring options, e.g. air conditioning control, fuel consumption, machine and attachment parameters
Air-conditioning	Automatic air-conditioning, recirculated air function, fast de-icing and demisting at the press of a button, air vents can be operated via a menu. Recirculated air and fresh air filters can be easily replaced and are accessible from the outside. Heating-cooling unit, designed for extreme outside temperatures, sensors for solar radiation, inside and outside temperatures
Noise emission	
ISO 6396	71 dB(A) = L_{pA} (inside cab)
2000/14/EC	105 dB(A) = L_{WA} (surround noise)



Undercarriage

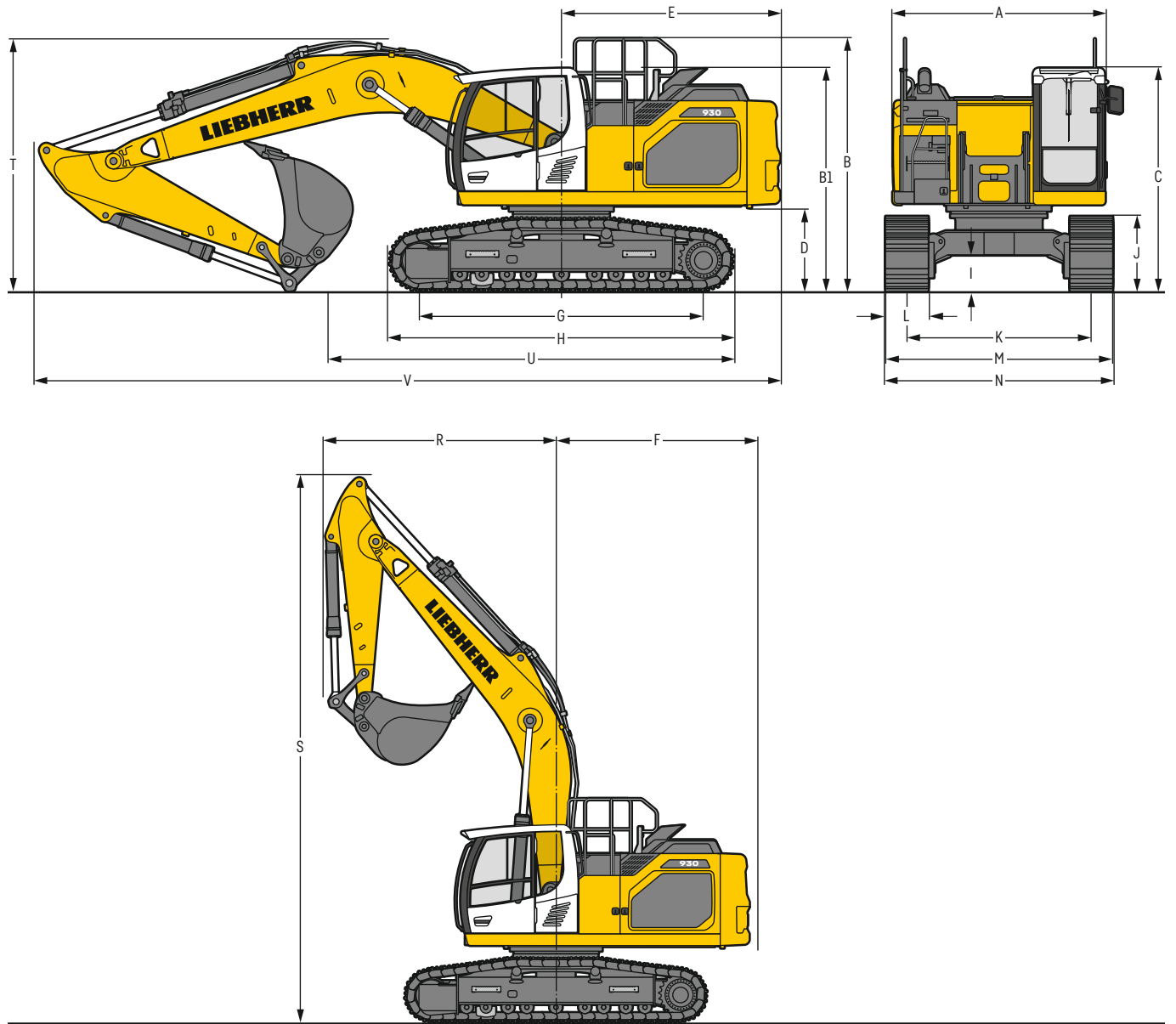
LC	Gauge 2,590 mm / 8'6"
Drive	Liebherr swashplate motor with brake valves on both sides
Transmission	Liebherr planetary reduction gear
Maximum travel speed	3.5 km/h / 2.2 mph low range 5.8 km/h / 3.6 mph high range
Drawbar pull on crawler	261 kN / 58,680 lbf
Track components	D7, D7G, maintenance-free
Track rollers / Carrier rollers	9 / 2
Tracks	Sealed and greased
Track pads	Triple grouser
Holding brake	Wet multi-disc (spring applied, pressure released)
Brake valves	Integrated into travel motor
Lashing eyes	Integrated



Equipment

Type	Combination of resistant steel plates and cast steel components
Hydraulic cylinders	Liebherr cylinders with seal and guidance systems
Bearings	Sealed, low maintenance
Lubrication	Liebherr central lubrication system
Hydraulic connections	Pipes and hoses equipped with SAE split-flange connections
Buckets	Standard equipped with Liebherr tooth system

Dimensions



		LC	mm / ft in			
A	Uppercarriage width		2,990 ²⁾ / 9'10" ²⁾			
B	Uppercarriage height		3,130 / 10' 3"			
B1	Uppercarriage height (handrails folded)		2,910 / 9' 7"			
C	Cab height		3,150 / 10' 4"			
D	Counterweight ground clearance		1,175 / 3'10"			
E	Rear-end length		3,075 / 10' 1"			
F	Tail swing radius		3,200 / 10' 6"			
G	Wheelbase		3,990 / 13' 1"			
H	Undercarriage length		4,840 / 15'11"			
I	Undercarriage ground clearance		505 / 1' 8"			
J	Track height		1,055 / 3' 6"			
K	Track gauge		2,590 / 8' 6"			
L	Track pad width	600 / 24" 700 / 28" 800 / 31" 900 / 35"				
M	Width over tracks	3,190 / 10' 6" 3,290 / 10'10" 3,390 / 11' 1" 3,490 / 11' 5"				
N	Width over steps	3,190 / 10' 6" 3,190 / 10' 6" 3,390 ¹⁾ / 11' 1" ¹⁾ 3,390 ¹⁾ / 11' 1" ¹⁾				

¹⁾ width with removable steps

²⁾ without door stop device and spacer

		Stick length	Mono boom 6.20 m / 20'4"			
		m / ft in	direct mounting mm / ft in			
R	Front swing radius		3,700 / 12' 2"			
S	Height with boom up		8,700 / 28' 7"			
T	Boom height	2.50 / 8'2"	3,250 / 10' 8"			
		2.80 / 9'2"	3,550 / 11' 8"			
		3.20 / 10'6"	3,400 / 11' 2"			
		3.70 / 12'2"	3,200 ¹⁾ / 10' 6" ¹⁾			
U	Length on ground	2.50 / 8'2"	6,400 / 21'			
		2.80 / 9'2"	6,250 / 20' 6"			
		3.20 / 10'6"	5,600 / 18' 4"			
		3.70 / 12'2"	4,850 ¹⁾ / 15'11" ¹⁾			
V	Overall length	2.50 / 8'2"	10,400 / 34' 1"			
		2.80 / 9'2"	10,400 / 34' 1"			
		3.20 / 10'6"	10,400 / 34' 1"			
		3.70 / 12'2"	10,400 ¹⁾ / 34' 1" ¹⁾			
	Bucket		1.75 m ³ / 2.29 yd ³			

¹⁾ without bucket

Transport dimensions

removable elements disassembled

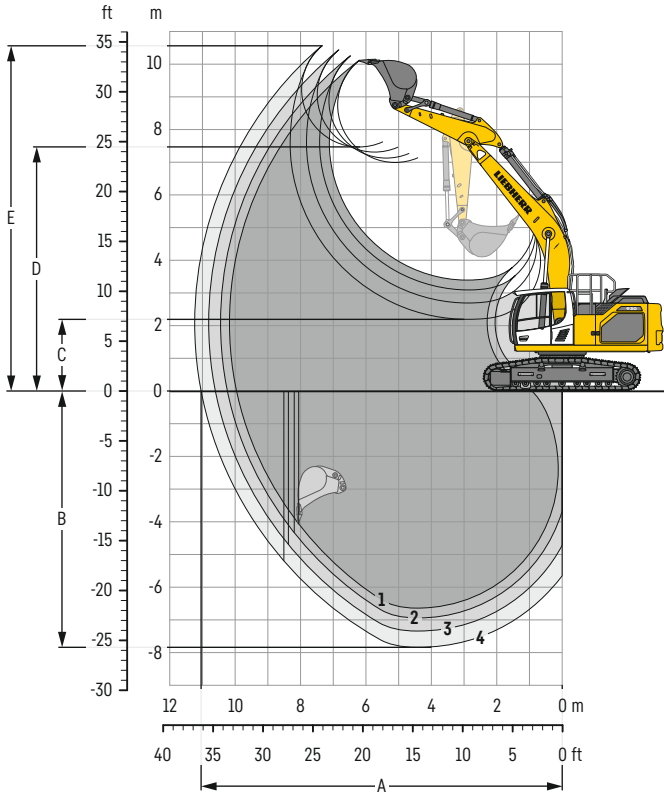
		Mono boom 6.20 m / 20'4"			
		mm / ft in			
Pad width		600 / 24" 700 / 28" 800 / 31" 900 / 35"			
Transport width		3,190 / 10' 6" 3,290 / 10'10" 3,390 / 11' 1" 3,490 / 11' 5"			

		Stick	mm / ft in	
		m / ft in		
Transport length		2.50 / 8'2"	10,400 / 34'1"	
		2.80 / 9'2"	10,400 / 34'1"	
		3.20 / 10'6"	10,400 / 34'1"	
		3.70 / 12'2"	10,400 ¹⁾ / 34'1" ¹⁾	
Transport height		2.50 / 8'2"	3,250 / 10'8"	
		2.80 / 9'2"	3,550 / 11'8"	
		3.20 / 10'6"	3,400 / 11'2"	
		3.70 / 12'2"	3,200 / 10'6"	
Bucket			1.75 m ³ / 2.29 yd ³	

¹⁾ without bucket

Backhoe bucket

with mono boom 6.20 m / 20'4"



Digging envelope

without quick coupler	1	2	3	4
Stick length	m / ft in 2.50 / 8' 2"	2.80 / 9' 2"	3.20 / 10' 6"	3.70 / 12' 2"
A Max. reach at ground level	m / ft in 9.95 / 32' 8"	10.23 / 33' 7"	10.60 / 34' 9"	11.04 / 36' 3"
B Max. digging depth	m / ft in 6.64 / 21' 9"	6.94 / 22' 9"	7.34 / 24' 1"	7.84 / 25' 9"
C Min. dumping height	m / ft in 3.39 / 11' 1"	3.09 / 10' 2"	2.69 / 8' 10"	2.19 / 7' 2"
D Max. dumping height	m / ft in 6.99 / 22' 11"	7.13 / 23' 5"	7.31 / 24'	7.47 / 24' 6"
E Max. cutting height	m / ft in 10.10 / 33' 2"	10.23 / 33' 7"	10.42 / 34' 2"	10.56 / 34' 8"

Forces

without quick coupler	1	2	3	4
Stick digging force (ISO 6015)	kN / lbf 168 / 37,770	156 / 35,070	142 / 31,920	128 / 28,780
Bucket digging force (ISO 6015)	kN / lbf 204 / 45,860	204 / 45,860	204 / 45,860	204 / 45,860
Stick digging force (SAE J1179)	kN / lbf 160 / 35,970	149 / 33,500	136 / 30,570	123 / 27,650
Bucket digging force (SAE J1179)	kN / lbf 178 / 40,020	178 / 40,020	178 / 40,020	178 / 40,020

Operating weight and ground pressure

The operating weight includes the basic machine with counterweight 5.1 t / 11,240 lb, mono boom 6.20 m / 20'4", stick 3.20 m / 10'6" and bucket 1.75 m³ / 2.29 yd³ (1,160 kg / 2,560 lb).

Undercarriage	LC			
Pad width	mm / in 600 / 24"	700 / 28"	800 / 31"	900 / 35"
Weight	kg / lb 30,150 / 66,470	30,500 / 67,240	30,850 / 68,010	31,200 / 68,780
Ground pressure	kg/cm ² / psi 0.59 / 8.4	0.51 / 7.3	0.45 / 6.4	0.40 / 5.7

The operating weight includes the basic machine with counterweight 6.2 t / 13,670 lb, mono boom 6.20 m / 20'4", stick 3.20 m / 10'6" and bucket 1.75 m³ / 2.29 yd³ (1,160 kg / 2,560 lb).

Undercarriage	LC			
Pad width	mm / in 600 / 24"	700 / 28"	800 / 31"	900 / 35"
Weight	kg / lb 31,250 / 68,890	31,600 / 69,670	31,950 / 70,440	32,300 / 71,210
Ground pressure	kg/cm ² / psi 0.61 / 8.7	0.53 / 7.5	0.47 / 6.7	0.42 / 6.0

Buckets Machine stability per ISO 10567* (75% of tipping capacity)

				LC undercarriage (with track pads 800 mm / 31")									
Cutting width	Capacity ISO 7461	Weight ³⁾	Weight ⁴⁾	Stick length (m / ft in)									
				without quick coupler					with quick coupler				
mm	m ³	kg	kg	2.50	2.80	3.20	3.70	2.50	2.80	3.20	3.70		
ft in	yd ³	lb	lb	8'2"	9'2"	10'6"	12'2"	8'2"	9'2"	10'6"	12'2"		
with counterweight 4.6t / 10,140 lb													
STD ¹⁾	1,250	1.25	1,000	1,050	▲	▲	▲	▲	▲	▲	▲	▲	
	4'1"	1.63	2,210	2,320	▲	▲	▲	▲	▲	▲	▲	▲	
	1,400	1.45	1,070	1,130	▲	▲	▲	▲	▲	▲	▲	■	
	4'7"	1.90	2,360	2,490	▲	▲	▲	▲	▲	▲	▲	■	
	1,550	1.60	1,110	1,170	▲	▲	▲	■	▲	▲	■	▲	
	5'1"	2.09	2,450	2,580	▲	▲	▲	■	▲	▲	■	▲	
	1,650	1.75	1,160	1,220	▲	▲	■	▲	▲	■	▲	■	
	5'5"	2.29	2,560	2,690	▲	▲	■	▲	▲	■	▲	■	
	1,550	1.85	1,170	1,230	▲	■	▲	■	■	■	▲	▲	
	5'1"	2.42	2,580	2,710	▲	■	▲	■	■	■	▲	▲	
1,650	2.00	1,210	1,270	■	▲	■	▲	■	▲	■	▲		
5'5"	2.62	2,670	2,800	■	▲	■	▲	■	▲	■	▲		
1,750	2.15	1,260	1,320	▲	■	▲	▲	▲	■	▲	▲		
5'9"	2.81	2,780	2,910	▲	■	▲	▲	▲	■	▲	▲		
HD ²⁾	1,250	1.25	1,140	1,200	▲	▲	▲	▲	▲	▲	▲	▲	
	4'1"	1.63	2,510	2,650	▲	▲	▲	▲	▲	▲	▲	▲	
	1,400	1.45	1,230	1,290	▲	▲	▲	▲	▲	▲	▲	■	
	4'7"	1.90	2,710	2,840	▲	▲	▲	▲	▲	▲	▲	■	
	1,550	1.60	1,290	1,350	▲	▲	■	▲	▲	▲	■	■	
	5'1"	2.09	2,840	2,980	▲	▲	■	▲	▲	▲	■	■	
	1,650	1.75	1,350	1,410	▲	■	▲	■	▲	■	▲	▲	
	5'5"	2.29	2,980	3,110	▲	■	▲	■	▲	■	▲	▲	
	1,550	1.85	1,340	1,400	▲	■	▲	■	■	▲	■	▲	
	5'1"	2.42	2,950	3,090	▲	■	▲	■	■	▲	■	▲	
1,650	2.00	1,400	1,460	■	▲	■	▲	▲	■	▲	▲		
5'5"	2.62	3,090	3,220	■	▲	■	▲	▲	■	▲	▲		
1,750	2.15	1,450	1,510	▲	■	▲	▲	■	▲	▲	-		
5'9"	2.81	3,200	3,330	▲	■	▲	▲	■	▲	▲	-		
with counterweight 5.1t / 11,240 lb													
STD ¹⁾	1,250	1.25	1,000	1,050	▲	▲	▲	▲	▲	▲	▲	▲	
	4'1"	1.63	2,210	2,320	▲	▲	▲	▲	▲	▲	▲	▲	
	1,400	1.45	1,070	1,130	▲	▲	▲	▲	▲	▲	▲	▲	
	4'7"	1.90	2,360	2,490	▲	▲	▲	▲	▲	▲	▲	▲	
	1,550	1.60	1,110	1,170	▲	▲	▲	▲	▲	▲	▲	▲	
	5'1"	2.09	2,450	2,580	▲	▲	▲	▲	▲	▲	▲	▲	
	1,650	1.75	1,160	1,220	▲	▲	▲	■	▲	▲	▲	■	
	5'5"	2.29	2,560	2,690	▲	▲	▲	■	▲	▲	▲	■	
	1,550	1.85	1,170	1,230	▲	▲	▲	■	▲	▲	■	▲	
	5'1"	2.42	2,580	2,710	▲	▲	▲	■	▲	▲	■	▲	
1,650	2.00	1,210	1,270	▲	▲	■	▲	▲	■	▲	■		
5'5"	2.62	2,670	2,800	▲	▲	■	▲	▲	■	▲	■		
1,750	2.15	1,260	1,320	▲	■	▲	■	■	▲	■	▲		
5'9"	2.81	2,780	2,910	▲	■	▲	■	■	▲	■	▲		
HD ²⁾	1,250	1.25	1,140	1,200	▲	▲	▲	▲	▲	▲	▲	▲	
	4'1"	1.63	2,510	2,650	▲	▲	▲	▲	▲	▲	▲	▲	
	1,400	1.45	1,230	1,290	▲	▲	▲	▲	▲	▲	▲	▲	
	4'7"	1.90	2,710	2,840	▲	▲	▲	▲	▲	▲	▲	▲	
	1,550	1.60	1,290	1,350	▲	▲	▲	▲	▲	▲	▲	■	
	5'1"	2.09	2,840	2,980	▲	▲	▲	▲	▲	▲	▲	■	
	1,650	1.75	1,350	1,410	▲	▲	▲	■	▲	▲	■	▲	
	5'5"	2.29	2,980	3,110	▲	▲	▲	■	▲	▲	■	▲	
	1,550	1.85	1,340	1,400	▲	▲	■	▲	▲	▲	■	▲	
	5'1"	2.42	2,950	3,090	▲	▲	■	▲	▲	▲	■	▲	
1,650	2.00	1,400	1,460	▲	■	▲	■	▲	■	▲	■		
5'5"	2.62	3,090	3,220	▲	■	▲	■	▲	■	▲	■		
1,750	2.15	1,450	1,510	■	■	▲	▲	■	▲	■	▲		
5'9"	2.81	3,200	3,330	■	■	▲	▲	■	▲	■	▲		

* Indicated loads are based on ISO 10567, at maximum reach, and may be swung 360° on firm and even ground

¹⁾ Standard bucket with teeth Z 40

²⁾ HD bucket with teeth Z 40

³⁾ Bucket for direct mounting

⁴⁾ Bucket for mounting to quick coupler SWA 66 (350 kg / 770 lb)

Other buckets available upon request

Max. material weight ▲ = ≤ 2.0t/m³ / 3,400lb/yd³, ■ = ≤ 1.8t/m³ / 3,000lb/yd³, ▲ = ≤ 1.65t/m³ / 2,800lb/yd³, ■ = ≤ 1.5t/m³ / 2,500lb/yd³, △ = ≤ 1.2t/m³ / 2,000lb/yd³, - = not authorized

Lift capacities

with mono boom 6.20 m / 20'4", counterweight 5.1 t / 11,240 lb and track pads 800 mm / 31"

Stick 2.50 m / 8'2"

Under-carriage	3.0m 10ft		4.5m 15ft		6.0m 20ft		7.5m 25ft		9.0m 30ft		m ft in	
9.0m t												
30ft lb												
7.5m t					8.1	9.0*			7.2	8.3*	6.4	
25ft lb					17.4	19.8*			16.3	18.5*	20'10"	
6.0m t					8.0	9.3*			5.6	8.1*	7.5	
20ft lb					17.2	20.2*			12.6	17.8*	24'4"	
4.5m t		11.8	12.8*		7.6	10.2*	5.5	8.2	4.9	7.3	8.1	
15ft lb		25.4	27.6*		16.5	22.0*	11.8	17.7	10.8	16.2	26'5"	
3.0m t		10.8	15.3*		7.2	11.2*	5.3	8.0	4.5	6.8	8.4	
10ft lb		23.4	32.9*		15.6	24.4*	11.4	17.3	9.9	15.0	27'6"	
1.5m t		10.3	16.5*		6.9	11.0	5.1	7.9	4.4	6.7	8.4	
5ft lb		22.1	35.6*		14.9	23.6	11.0	16.9	9.6	14.7	27'7"	
0m t		10.1	16.2*		6.7	10.8	5.0	7.7	4.5	6.9	8.2	
0ft lb		21.7	35.3*		14.5	23.1	10.8	16.7	9.9	15.2	26'8"	
-1.5m t	13.0*	13.0*	10.1	15.0*	6.7	10.7	5.0	7.7	4.9	7.6	7.6	
-5ft lb	29.5*	29.5*	21.8	32.7*	14.5	23.1			10.9	16.8	24'11"	
-3.0m t	15.9*	15.9*	10.3	12.8*	6.8	9.9*			5.9	8.5*	6.7	
-10ft lb	34.5*	34.5*	22.2	27.7*	14.7	21.2*			13.2	18.7*	21'10"	
-4.5m t		8.7*	8.7*						7.4*	7.4*	5.2	
-15ft lb		18.3*	18.3*						16.1*	16.1*	16'8"	
-6.0m t												
-20ft lb												

Stick 2.80 m / 9'2"

Under-carriage	3.0m 10ft		4.5m 15ft		6.0m 20ft		7.5m 25ft		9.0m 30ft		m ft in	
9.0m t												
30ft lb												
7.5m t					8.2	8.5*					6.7	7.3*
25ft lb					17.6	18.8*					15.0	16.2*
6.0m t					8.0	8.9*		5.6	8.2*		5.3	7.1*
20ft lb					17.3	19.3*		12.0	16.8*		11.8	15.7*
4.5m t	18.5*	18.5*	11.9	12.2*	7.7	9.8*	5.5	8.3			4.6	6.9
15ft lb	39.1*	39.1*	25.7	26.4*	16.6	21.3*	11.8	17.8			10.2	15.4
3.0m t			10.9	14.7*	7.3	11.0*	5.3	8.0			4.3	6.5
10ft lb			23.6	31.7*	15.7	23.7*	11.4	17.3			9.4	14.3
1.5m t			10.3	16.2*	6.9	11.0	5.1	7.8			4.1	6.3
5ft lb			22.2	35.1*	14.9	23.6	11.0	16.9			9.1	14.0
0m t			10.0	16.3*	6.7	10.7	5.0	7.7			4.3	6.5
0ft lb			21.6	35.4*	14.4	23.0	10.7	16.6			9.4	14.4
-1.5m t	12.5*	12.5*	10.0	15.3*	6.6	10.6	4.9	7.7			4.6	7.1
-5ft lb	28.5*	28.5*	21.6	33.3*	14.3	22.9	10.7	16.5			10.2	15.8
-3.0m t	17.1*	17.1*	10.2	13.4*	6.7	10.3*					5.5	8.3*
-10ft lb	37.1*	37.1*	21.9	28.9*	14.5	22.1*					12.2	18.3*
-4.5m t	12.1*	12.1*	9.7*	9.7*							7.6*	7.6*
-15ft lb	25.9*	25.9*	20.6*	20.6*							16.5*	16.5*
-6.0m t												
-20ft lb												

Stick 3.20 m / 10'6"

Under-carriage	3.0m 10ft		4.5m 15ft		6.0m 20ft		7.5m 25ft		9.0m 30ft		m ft in	
9.0m t											6.9*	6.9*
30ft lb											13.5	13.9*
7.5m t					8.1	8.4*	5.6	7.8*	4.9	6.1*	8.2	
25ft lb					17.4	18.2*	12.1	17.1*	10.9	13.5*	26'7"	
6.0m t					7.7	9.3*	5.5	8.2*	4.3	6.2*	8.7	
20ft lb					17.4	18.2*	12.1	17.1*	10.9	13.5*	26'7"	
4.5m t		11.4*	11.4*		7.7	9.3*	5.5	8.2*	4.3	6.2*	8.7	
15ft lb		24.6*	24.6*		16.7	20.2*	11.8	17.8	9.5	13.6*	28'7"	
3.0m t		11.1	14.0*		7.3	10.5*	5.3	8.0	4.0	6.1	9.0	
10ft lb		24.0	30.2*		15.7	22.8*	11.4	17.3	8.8	13.4	29'6"	
1.5m t		10.3	15.8*		6.9	11.0	5.1	7.8	3.9	5.9	9.0	
5ft lb		22.3	34.3*		14.9	23.6	10.9	16.8	8.5	13.1	29'8"	
0m t	6.5*	6.5*	10.0	16.3*	6.7	10.7	4.9	7.6	4.0	6.1	8.8	
0ft lb	15.0*	15.0*	21.5	35.4*	14.3	23.0	10.6	16.5	8.7	13.4	28'11"	
-1.5m t	12.0*	12.0*	9.9	15.7*	6.6	10.6	4.9	7.6	4.3	6.6	8.3	
-5ft lb	27.2*	27.2*	21.3	34.0*	14.1	22.7	10.5	16.3	9.4	14.5	27'2"	
-3.0m t	18.6*	18.6*	10.0	14.0*	6.6	10.6			5.0	7.7	7.5	
-10ft lb	40.3*	40.3*	21.6	30.2*	14.2	22.8			11.0	17.1	24'5"	
-4.5m t	14.0*	14.0*	10.3	10.9*	6.8	8.0*			6.6	7.6*	6.2	
-15ft lb	30.0*	30.0*	22.2	23.2*					14.9	16.7*	19'11"	
-6.0m t												
-20ft lb												

Stick 3.70 m / 12'2"

Under-carriage	3.0m 10ft		4.5m 15ft		6.0m 20ft		7.5m 25ft		9.0m 30ft		m ft in	
9.0m t											5.7*	5.7*
30ft lb											12.7*	12.7*
7.5m t							5.8	6.0*			5.3*	5.3*
25ft lb							12.2*	12.2*			11.6*	11.6*
6.0m t							5.7	7.3*			4.5	5.1*
20ft lb							12.3	15.9*			10.0	11.3*
4.5m t							7.8	8.7*	5.5	7.8*	4.1	5.9*
15ft lb							16.9	18.9*	11.9	16.9*	8.8	11.5*
3.0m t		11.4*	11.4*		11.3	13.1*	7.4	10.0*	5.3	8.1	4.0	6.1
10ft lb		29.6*	29.6*		24.5	28.2*	15.9	21.7*	11.4	17.4	8.6	13.1
1.5m t		10.5	15.3*		6.9	11.0	5.1	7.8	3.9	5.9	3.6	5.5
5ft lb		12.5*	12.5*		22.6	33.0*	15.0	23.7	10.9	16.8	8.3	12.8
0m t		7.6*	7.6*		10.0	16.2*	6.6	10.7	4.9	7.6	3.8	5.8
0ft lb		17.2*	17.2*		21.5	35.1*	14.3	23.0	10.5	16.4	8.2	12.6
-1.5m t	11.6*	11.6*	9.8	15.9*	6.5	10.5	4.8	7.5			3.9	6.0
-5ft lb	26.1*	26.1*	21.2	34.6*	14.0	22.6	10.3	16.2			8.6	13.3
-3.0m t	17.0*	17.0*	9.9	14.6*	6.5	10.5	4.8	7.5			4.4	6.9
-10ft lb	38.5*	38.5*	21.3	31.7*	14.0	22.6	10.4	16.3			9.8	15.3
-4.5m t	16.1*	16.1*	10.1	12.1*	6.6	9.1*					5.7	7.6*
-15ft lb	34.6*	34.6*	21.8	25.9*	14.4	19.3*					12.7	16.7*
-6.0m t			7.1*	7.1*							6.5*	6.5*
-20ft lb												

Height Can be slewed through 360° In longitudinal position of undercarriage Max. reach * Limited by hydr. capacity

The load values are quoted in tons (t) / lb x 1,000 at stick end (without bucket), and may be swung 360° on firm and even ground. Adjacent values are valid for the undercarriage when in the longitudinal position. Capacities are valid for 800 mm / 31" wide track pads. Indicated loads are based on ISO 10567 standard and do not exceed 75% of tipping or 87% of hydraulic capacity (indicated via *). Without bucket cylinder, link and lever the lift capacities will increase by 410 kg / 905 lb. Lifting capacity of the excavator is limited by machine stability and hydraulic capacity.

Determine maximum load lift from load lift chart displayed in the operator's cab or from load lift chart detailed in the operator's manual supplied with the machine.

Lift capacities

with mono boom 6.20 m / 20'4", counterweight 6.2 t / 13,670 lb and track pads 800 mm / 31"

Stick 2.50 m / 8'2"

Under-carriage	3.0m 10ft		4.5m 15ft		6.0m 20ft		7.5m 25ft		9.0m 30ft		m ft in	
9.0m t												
30ft lb												
7.5m t					8.9	9.0*			7.9	8.3*	6.4	
25ft lb					19.0	19.8*			17.9	18.5*	20*11"	
6.0m t					8.7	9.3*			6.2	8.1*	7.5	
20ft lb					18.8	20.2*			13.8	17.8*	24*4"	
4.5m t			12.8*	12.8*	8.4	10.2*	6.0	8.8*	5.4	8.0	8.1	
15ft lb			27.6*	27.6*	18.1	22.0*	13.0	19.3*	11.9	17.7	26*5"	
3.0m t			12.0	15.3*	8.0	11.2*	5.8	8.8	5.0	7.4	8.4	
10ft lb			25.8	32.9*	17.3	24.4*	12.6	18.9	11.0	16.4	27*6"	
1.5m t			11.4	16.5*	7.7	11.9	5.7	8.6	4.9	7.3	8.4	
5ft lb			24.6	35.6*	16.6	25.7	12.3	18.5	10.7	16.1	27*7"	
0m t			11.2	16.2*	7.5	11.7	5.6	8.5	5.0	7.5	8.2	
0ft lb			24.1	35.3*	16.2	25.3	12.0	18.2	11.0	16.6	26*8"	
-1.5m t	13.0*	13.0*	11.2	15.0*	7.5	11.6*	5.6	8.5	5.5	8.3	7.6	
-5ft lb	29.5*	29.5*	24.2	32.7*	16.1	25.1*			12.1	18.4	24*11"	
-3.0m t	15.9*	15.9*	11.4	12.8*					6.6	8.5	6.7	
-10ft lb	34.5*	34.5*	24.6	27.7*	16.4	21.2*			14.7	18.7*	21*10"	
-4.5m t			8.7*	8.7*					7.4*	7.4*	5.2	
-15ft lb			18.3*	18.3*					16.1*	16.1*	16*8"	
-6.0m t												
-20ft lb												

Stick 2.80 m / 9'2"

Under-carriage	3.0m 10ft		4.5m 15ft		6.0m 20ft		7.5m 25ft		9.0m 30ft		m ft in	
9.0m t												
30ft lb												
7.5m t					8.5*	8.5*					7.3	7.3*
25ft lb					18.8*	18.8*					16.2*	16.2*
6.0m t					8.8	8.9*	6.2	8.2*			5.8	7.1*
20ft lb					18.9	19.3*	13.3	16.8*			13.0	15.7*
4.5m t	18.5*	18.5*	12.2*	12.2*	8.4	9.8*	6.0	8.6*			5.1	7.2*
15ft lb	39.1*	39.1*	26.4*	26.4*	18.2	21.3*	13.0	18.7*			11.3	15.8*
3.0m t			12.1	14.7*	8.0	11.0*	5.8	8.8			4.7	7.1
10ft lb			26.0	31.7*	17.3	23.7*	12.6	18.9			10.5	15.6
1.5m t			11.4	16.2*	7.7	11.8*	5.6	8.5			4.6	6.9
5ft lb			24.6	35.1*	16.5	25.7*	12.2	18.4			10.2	15.3
0m t			11.2	16.3*	7.4	11.7	5.5	8.4			4.7	7.1
0ft lb			24.0	35.4*	16.1	25.2	11.9	18.1			10.5	15.7
-1.5m t	12.5*	12.5*	11.1	15.3*	7.4	11.6	5.5	8.4			5.2	7.8
-5ft lb	28.5*	28.5*	24.0	33.3*	15.9	25.0	11.9	18.1			11.4	17.2
-3.0m t	17.1*	17.1*	11.3	13.4*	7.5	10.3*					6.1	8.3*
-10ft lb	37.1*	37.1*	24.3	28.9*	16.1	22.1*					13.5	18.3*
-4.5m t	12.1*	12.1*	9.7*	9.7*							7.6*	7.6*
-15ft lb	25.9*	25.9*	20.6*	20.6*							16.5*	16.5*
-6.0m t												
-20ft lb												

Stick 3.20 m / 10'6"

Under-carriage	3.0m 10ft		4.5m 15ft		6.0m 20ft		7.5m 25ft		9.0m 30ft		m ft in	
9.0m t											6.9*	6.9*
30ft lb											6.9*	6.9*
7.5m t											6.3*	6.3*
25ft lb											13.9*	13.9*
6.0m t					8.4*	8.4*	6.2	7.8*			5.4	6.1*
20ft lb					18.2*	18.2*	13.4	17.1*			12.0	13.5*
4.5m t			11.4*	11.4*	8.5	9.3*	6.0	8.2*			4.8	6.2*
15ft lb			24.6*	24.6*	18.3	20.2*	13.0	17.9*			10.5	13.6*
3.0m t			12.2	14.0*	8.0	10.5*	5.8	8.8	4.4	6.5*	4.4	6.4*
10ft lb			26.4	30.2*	17.4	22.8*	12.6	18.9			9.8	14.1*
1.5m t			11.5	15.8*	7.7	11.6*	5.6	8.5	4.4	6.5	4.3	6.5
5ft lb			24.7	34.3*	16.5	25.0*	12.1	18.4			9.5	14.3
0m t	6.5*	6.5*	11.1	16.3*	7.4	11.7	5.5	8.4			4.4	6.7
0ft lb	15.0*	15.0*	23.9	35.4*	16.0	25.1	11.8	18.0			9.7	14.7
-1.5m t	12.0*	12.0*	11.0	15.7*	7.3	11.5	5.4	8.3			4.8	7.2
-5ft lb	27.2*	27.2*	23.7	34.0*	15.8	24.8	11.7	17.9			10.5	15.9
-3.0m t	18.6*	18.6*	11.1	14.0*	7.3	10.7*					5.5	8.0*
-10ft lb	40.3*	40.3*	24.0	30.2*	15.9	23.1*					12.3	17.7*
-4.5m t	14.0*	14.0*	10.9*	10.9*	7.6	8.0*					7.3	7.6*
-15ft lb	30.0*	30.0*	23.2*	23.2*							16.5	16.7*
-6.0m t												
-20ft lb												

Stick 3.70 m / 12'2"

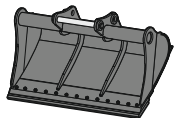
Under-carriage	3.0m 10ft		4.5m 15ft		6.0m 20ft		7.5m 25ft		9.0m 30ft		m ft in	
9.0m t											5.7*	5.7*
30ft lb											12.7*	12.7*
7.5m t							6.0*	6.0*			5.3*	5.3*
25ft lb							12.2*	12.2*			11.6*	11.6*
6.0m t							6.3	7.3*			4.9	5.1*
20ft lb							13.5	15.9*			11.0	11.3*
4.5m t							8.6	8.7*	6.1	7.8*	4.4	5.2*
15ft lb							18.5	18.9*	13.1	16.9*	9.8	11.5*
3.0m t	11.4*	11.4*	12.5	13.1*	8.1	10.0*	5.9	8.4*	4.4	6.6	4.1	5.4*
10ft lb	29.6*	29.6*	26.9	28.2*	17.5	21.7*	12.6	18.3*	9.6	14.3	9.1	11.9*
1.5m t			11.6	15.3*	7.7	11.2*	5.6	8.5	4.3	6.5	4.0	5.8*
5ft lb	12.5*	12.5*	25.0	33.0*	16.6	24.2*	12.1	18.4	9.3	14.0	8.9	12.8*
0m t	7.6*	7.6*	11.1	16.2*	7.4	11.7	5.4	8.3	4.2	6.4	4.1	6.2
0ft lb	17.2*	17.2*	23.9	35.1*	15.9	25.1	11.7	18.0	9.1	13.8	9.0	13.6
-1.5m t	11.6*	11.6*	10.9	15.9*	7.2	11.5	5.3	8.2			4.4	6.6
-5ft lb	26.1*	26.1*	23.6	34.6*	15.6	24.7	11.5	17.7			9.6	14.6
-3.0m t	17.0*	17.0*	11.0	14.6*	7.2	11.1*	5.4	8.3			5.0	7.6
-10ft lb	38.5*	38.5*	23.7	31.7*	15.6	24.0*	11.6	17.8			11.0	16.8
-4.5m t	16.1*	16.1*	11.2	12.1*	7.4	9.1*					6.3	7.6*
-15ft lb	34.6*	34.6*	24.2	25.9*	16.0	19.3*					14.1	16.7*
-6.0m t			7.1*	7.1*							6.5*	6.5*
-20ft lb												

Height Can be slewed through 360° In longitudinal position of undercarriage Max. reach * Limited by hydr. capacity

The load values are quoted in tons (t) / lb x 1,000 at stick end (without bucket), and may be swung 360° on firm and even ground. Adjacent values are valid for the undercarriage when in the longitudinal position. Capacities are valid for 800 mm / 31" wide track pads. Indicated loads are based on ISO 10567 standard and do not exceed 75% of tipping or 87% of hydraulic capacity (indicated via *). Without bucket cylinder, link and lever the lift capacities will increase by 410 kg / 905 lb. Lifting capacity of the excavator is limited by machine stability and hydraulic capacity.

Determine maximum load lift from load lift chart displayed in the operator's cab or from load lift chart detailed in the operator's manual supplied with the machine.

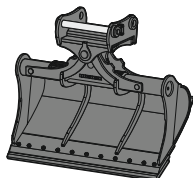
Attachments



Rigid ditch cleaning bucket

GRL 05, for mounting to quick coupler SWA 66

Cutting width	mm / ft in	2,000 / 6'7"	2,400 / 7'10"	2,400 / 7'10"
Capacity	m ³ / yd ³	0.70 / 0.92	0.85 / 1.11	1.25 / 1.63
Weight	kg / lb	546 / 1,200	635 / 1,400	685 / 1,510



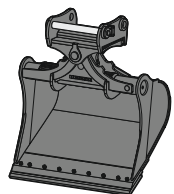
Tiltable ditch cleaning bucket

GRL 100, 2 x 50° tiltable, for direct mounting

Cutting width	mm / ft in	2,000 / 6'7"	2,000 / 6'7"	2,200 / 7'3"	2,400 / 7'10"	2,400 / 7'10"
Capacity	m ³ / yd ³	1.20 / 1.57	1.45 / 1.90	1.65 / 2.16	0.85 / 1.11	1.45 / 1.90
Weight	kg / lb	1,520 / 3,350	1,600 / 3,530	1,680 / 3,700	1,475 / 3,250	1,620 / 3,570

GRL 100, 2 x 50° tiltable, for mounting to quick coupler SWA 66

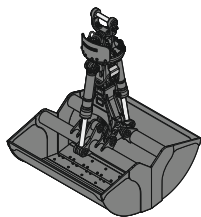
Cutting width	mm / ft in	2,000 / 6'7"	2,000 / 6'7"	2,200 / 7'3"	2,400 / 7'10"	2,400 / 7'10"
Capacity	m ³ / yd ³	1.20 / 1.57	1.45 / 1.90	1.65 / 2.16	0.85 / 1.11	1.45 / 1.90
Weight	kg / lb	1,520 / 3,350	1,600 / 3,530	1,680 / 3,700	1,475 / 3,250	1,620 / 3,570



Tilt bucket

SL 100, 2 x 50° tiltable, for mounting to quick coupler SWA 66

Cutting width	mm / ft in	1,600 / 5'3"	1,600 / 5'3"	1,700 / 5'7"	1,800 / 5'11"
Capacity	m ³ / yd ³	1.45 / 1.90	1.75 / 2.29	1.85 / 2.42	1.60 / 2.09
Weight	kg / lb	1,520 / 3,350	1,635 / 3,610	1,695 / 3,740	1,620 / 3,570
HD version				X	



Clamshell grab

GMZ 30, clamshell buckets, for mounting to quick coupler SWA 48 (exists for direct mounting)

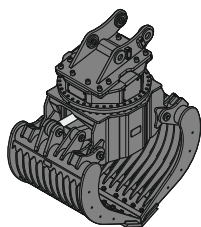
Cutting width	mm / ft in	600 / 2'	800 / 2'7"	1,000 / 3'3"	1,200 / 3'11"
Capacity	m ³ / yd ³	0.38 / 0.50	0.52 / 0.68	0.65 / 0.85	0.80 / 1.05
Weight	kg / lb	1,020 / 2,250	1,100 / 2,430	1,180 / 2,600	1,260 / 2,780

GMZ 40, clamshell buckets, for mounting to quick coupler SWA 48 (exists for direct mounting)

Cutting width	mm / ft in	800 / 2'7"	1,000 / 3'3"	1,200 / 3'11"	1,400 / 4'7"	1,600 / 5'3"
Capacity	m ³ / yd ³	0.65 / 0.85	0.85 / 1.11	1.05 / 1.37	1.20 / 1.57	1.40 / 1.83
Weight	kg / lb	1,320 / 2,910	1,405 / 3,100	1,495 / 3,300	1,580 / 3,480	1,670 / 3,680

GMZ 80, clamshell buckets, for mounting to quick coupler SWA 66

Cutting width	mm / ft in	1,200 / 3'11"	1,200 / 3'11"	1,400 / 4'7"	1,400 / 4'7"	1,650 / 5'5"	1,650 / 5'5"	2,000 / 6'7"	2,000 / 6'7"
Capacity	m ³ / yd ³	1.40 / 1.83	1.40 / 1.83	1.70 / 2.22	1.70 / 2.22	2.00 / 2.62	2.00 / 2.62	2.50 / 3.27	2.50 / 3.27
Weight	kg / lb	2,170 / 4,780	2,130 / 4,700	2,275 / 5,020	2,225 / 4,910	2,415 / 5,320	2,345 / 5,170	2,595 / 5,720	2,520 / 5,560



Sorting grab

		perforated		ribbed		closed		stone tong		
SG 30, for direct mounting										
Cutting width	mm / ft in	1,000 / 3'3"	1,200 / 3'11"	1,400 / 4'7"	1,000 / 3'3"	1,200 / 3'11"	1,400 / 4'7"	1,000 / 3'3"	1,200 / 3'11"	1,400 / 4'7"
Capacity	m ³ / yd ³	0.85 / 1.11	1.00 / 1.31	1.15 / 1.50	0.75 / 0.98	0.90 / 1.18	1.05 / 1.37	0.85 / 1.11	1.00 / 1.31	1.15 / 1.50
Weight	kg / lb	1,485 / 3,270	1,560 / 3,440	1,635 / 3,610	1,565 / 3,450	1,675 / 3,690	1,780 / 3,920	1,730 / 3,810	1,810 / 3,990	1,890 / 4,170
SG 30, for mounting to quick coupler SWA 48										
Cutting width	mm / ft in	1,000 / 3'3"	1,200 / 3'11"	1,400 / 4'7"	1,000 / 3'3"	1,200 / 3'11"	1,400 / 4'7"	1,000 / 3'3"	1,200 / 3'11"	1,400 / 4'7"
Capacity	m ³ / yd ³	0.85 / 1.11	1.00 / 1.31	1.15 / 1.50	0.75 / 0.98	0.90 / 1.18	1.05 / 1.37	0.85 / 1.11	1.00 / 1.31	1.15 / 1.50
Weight	kg / lb	1,485 / 3,270	1,560 / 3,440	1,635 / 3,610	1,565 / 3,450	1,675 / 3,690	1,780 / 3,920	1,730 / 3,810	1,810 / 3,990	1,890 / 4,170
SG 40, for mounting to quick coupler SWA 48 and SWA 66										
Cutting width	mm / ft in	1,100 / 3'7"	1,300 / 4'3"		1,100 / 3'7"	1,300 / 4'3"				
Capacity	m ³ / yd ³	1.30 / 1.70	1.60 / 2.09		1.10 / 1.44	1.40 / 1.83				
Weight	kg / lb	2,230 / 4,920	2,800 / 6,170		2,320 / 5,120	2,900 / 6,390				

Serial equipment

Undercarriage

Lashing eyes
Sprocket with dirt ejector
Track and carrier rollers, sealed and lifetime-lubricated

Uppercarriage

Access platforms without protruding parts
Anti-skid surfaces
Automatic swing brake lock
DEF tank filling indicator
DEF tank lockable access hatch
Engine hood with gas spring opening
Filters accessible from ground level
Handrails
Hydraulic oil level, visible from ground level
Lockable service doors
Lockable storage and accessories compartment
Lockable storage box
Main switch, accessible from ground level
Main switch, electric, with timer
Main switch, manual, lockable
Positioning swing brake manual
Protection grid on radiator fan
Safe uppercarriage side access platform
Sound insulation
Swing-out radiators
Windshield washer fluid tank, accessible from ground level

Hydraulic system

Dedicated swing circuit
Filter with integrated fine filters
Hydraulic pressure measuring ports
Liebherr Positive Control system with 2 independent circuits
Magnetic rod
Pressure accumulator for controlled lowering of equipment with engine turned off

Engine

Air filter with automatic dust ejector
Automatic engine idling / speed increase, controlled via joystick sensors
Common-Rail injection system
Engine oil dipstick
Exhaust gas after-treatment system – SCR
Fixed geometry turbocharger
Fuel fine filter
Fuel pre-filter and water separator
Fuel priming pump
Intercooler
Power Pack US EPA Tier 4 Final

Cab

9" multifunction color touchscreen
Air conditioning, automatic, tri-zone, controlled via display
Armrests adjustable in length, height and inclination
Bottle holder
Cab air filters housing, accessible from ground level
Cab door sliding windows
Cigarette lighter
Coat hook
DEF consumption on touchscreen
DEF level on touchscreen
Electric socket in cabin (12V)
Electric socket in cabin (24V)
Emergency hammer
Engine coolant level, visible from the cab
Engine oil level on touchscreen
Fuel consumption on touchscreen
Fuel level on touchscreen
Hydraulic oil level on touchscreen
Interior lighting
Laminated right hand side window
LiDAT Plus (Liebherr data transfer system)
Mechanical hour meter, visible from ground level
Mobile phone storage net
Movement priority between swing and boom, adjustable via touchscreen
Movement priority for stick-in, adjustable via touchscreen
Operating modes
Power modes
Rain hood over front window opening
Rearview mirror
Rear view monitoring camera
Rear window emergency exit
Right hand side view monitoring camera
Roll-down sun blinds for windscreen and roof window
ROPS safety cab structure (ISO 12117-2)
Rubber floor mat, fixed on floor and removable
Shortcut buttons on joystick configurable
Stepless adjustable engine speed
Storage box
Storage nets
Storage spaces
Swing braking torque adjustable via touchscreen
Swing drive gearbox oil level, visible from the cab
Tilttable console left
Tinted windows
Visco-elastic damping
Windscreen wiper and washer

Equipment

Anti-drift system boom cylinders
Anti-drift system stick cylinder
Boom cylinders regeneration
Pipe fracture safety valve for stick cylinder
Pipe fracture safety valves for boom cylinders
Pivot points made of cast steel
SAE split flanges on high pressure lines
Stick cylinder regeneration

Equipment standard / option

Undercarriage

Chain guide 1 piece	●
Chain guide 3 pieces	+
Chain guide 4 pieces	+
Cover and base plate for undercarriage center section	●
Reinforced cover and base plate for undercarriage center section	+
Special painting	+
Steps	●
Steps wide	+
Track chains cleaner	+
Track pads triple grouser 600 mm / 24" / 700 mm / 28" / 900 mm / 35"	+
Track pads triple grouser 800 mm / 31"	●
Track pads triple grouser reinforced 600 mm / 24"	+
Tracks, sealed and greased	●
Tracks, sealed and greased, reinforced	+
Undercarriage LC	+
Undercarriage storage compartment	+

Uppercarriage

Batteries high capacity	+
Batteries standard capacity	●
Boxing ring	+
Catwalk tiltable front left	+
Centralized lubrication system (automatic)	●
Centralized lubrication system (manual)	+
Counterweight heavy 6.2 t / 13,670 lb	+
Counterweight standard 5.1 t / 11,240 lb	●
Electric socket on uppercarriage (24 V)	+
Extended tool set including tool box	+
External starting aid (24 V)	+
Front right rearview mirror	+ ¹⁾
Fuel anti-theft protection	+
Headlight on uppercarriage, front left, LED+, 1 piece, protection included	+ ¹⁾
Headlight on uppercarriage, front right, LED, 1 piece, protection included	● ¹⁾
Headlight on uppercarriage, front right, LED+, 1 piece, protection included	+ ¹⁾
Headlight on uppercarriage, lateral left, LED+, 1 piece	+ ¹⁾
Headlight on uppercarriage, lateral right, LED+, 1 piece	+ ¹⁾
Headlights on uppercarriage, rear, LED+, 2 pieces	+ ¹⁾
Lighting for tank area	+ ¹⁾
Lighting for uppercarriage access	+ ¹⁾
Lockable fuel tank cap	●
Lockable fuel tank cap with padlock	+
Reflective warning stickers	+
Rotating beacons on uppercarriage, rear, LED, 2 pieces	+
Skyview 360°	+
Special painting	+
Tank refilling pump fuel	+
Tool set including storage case	●
Uppercarriage bottom and side protection	+
Uppercarriage bottom closure sheets	●

Hydraulic system

Bypass filter for hydraulic oil	+
Filter for hydraulic hammer return flow	+
High pressure circuit bypass	+
High pressure circuit flow summation	+
High pressure circuit switchable on pedals or mini-joystick	+
High pressure circuit with Tool Control (20 attachment adjustments on display)	+
Leak oil line for attachment	+
Liebherr hydraulic oil	●
Liebherr hydraulic oil, adapted for extreme climate conditions	+
Liebherr hydraulic oil, biodegradable	+
Medium pressure circuit	+

Engine

Air pre-filter with cyclonical dust trap	+
Automatic engine shutdown after idling	+
Engine shut-down with overrun	+
Lighting for engine compartment	+ ¹⁾
Pre-heating system for fuel	+
Radiator fine mesh protection grid	+
Reversible fan drive	+



Cab

3" seat belt with retractor, orange color	●
4-points seat belt	+
Acoustic travel alarm deactivatable	+
Auxiliary heater programmable	+
Bottom windscreen wiper	+
Coming / Leaving Home	+ ¹⁾
Cool box (12V)	+
Dark tinted windows	+
Electrically adjustable and heated outside rear-view mirrors	+ ¹⁾
Electronic immobilizer	+
Emergency stop in cab	+
FGPS front guard	+
FGPS front guard tiltable	+
Fire extinguisher	+
First-aid box	+
Footrest	+
FOPS top guard	+
FOPS top guard flat	+
Handrests elevated for joysticks	+
Headlights on cab, front, LED, 2 pieces	● ¹⁾
Headlights on cab, front, LED+, 2 pieces	+ ¹⁾
Headlights on cab roof, front, LED+, 2 pieces	+ ¹⁾
Impact resistant one-piece windscreen	+
Impact resistant roof window	+
Independent travel	+ ¹⁾
Integral protection guard	+
Laminated roof window	●
Lightbar on cabin	+
Lighting for cabin access	+ ¹⁾
Luminosity control (LED+ headlights)	+ ¹⁾
Mini-joystick proportional	●
Movement restriction for boom	+
Movement restriction for stick	+
Operator seat Comfort	●
Operator seat Premium	+
Overload warning system	+
Personalized operator profile	+
Preparation for tiltrotator	+
Radio Comfort	+
Radio pre-installation	●
Remote cab lock	+ ¹⁾
Retractable laminated two-piece windscreen	●
Roof sun shield	+
Roof window wiper	+
Rotating beacon on cabin, LED, 1 piece	+
Seat belt reminder	+
Smart Key	+ ¹⁾
Special painting	+
Straight travel via mini-joystick	+ ¹⁾
Sun visor	+
Switch between high pressure and bucket cylinder controls	+
Travel speed management	+ ¹⁾
Windscreen bottom protection grid	+



Equipment

Boom cylinders rod protection	+
Bucket cylinder rod protection	+
Centralized lubrication extended for connecting link	+
Floating boom	+
Grapple hydraulic lines (bucket cylinder inactive)	+
Headlight guard on boom, right	+
Headlight guards on boom, right and left	+
Headlight on boom, left, LED+, 1 piece	+ ¹⁾
Headlight on boom, right, LED, 1 piece	● ¹⁾
Headlight on boom, right, LED+, 1 piece	+ ¹⁾
Headlight on stick, bottom, LED+, 1 piece	+ ¹⁾
Hose protection for Solidlink	+
Liebherr bucket range	+
Liebherr tooth system	+
Load holding valve for bucket cylinder	+
Lubrication hoses protection on stick	+
Mono boom 6.20 m / 20'4"	+
Quick coupler SWA 48 hydraulic	+
Quick coupler SWA 48 mechanical	+
Quick coupler SWA 66 hydraulic	+
Quick coupler SWA 66 mechanical	+
Solidlink electric signal plug	+
Solidlink for quick coupler SWA 48 hydraulic	+
Solidlink for quick coupler SWA 66 hydraulic	+
Special painting	+
Stick 2.50 m / 8'2"	+
Stick 2.80 m / 9'2"	+
Stick 3.20 m / 10'6"	+
Stick 3.70 m / 12'2"	+
Stick bottom protection	+
Tool Management	+



Assistance system

Machine guidance system Leica 2D passive - "3D ready"	+
Machine guidance system Leica 2D semi-automatic - "3D ready"	+
Machine guidance system Leica 3D passive	+
Machine guidance system Leica 3D semi-automatic	+
Preparation for machine guidance system	+
Preparation for weighing system	+

● = Standard, + = Option

¹⁾ Equipment not individually available, but only as predefined packages

Non-exhaustive list, please contact us for further information.

Options and / or special equipment, supplied by vendors other than Liebherr, are only to be installed with the knowledge and approval of Liebherr in order to retain warranty.

The Liebherr Group



Global and independent: more than 70 years of success

Liebherr was founded in 1949. With the development of the world's first mobile tower crane, Hans Liebherr laid the foundations of a successful family business which today comprises more than 140 companies on all continent and employs nearly 51,000 people. The parent company of the Group is Liebherr-International AG in Bulle (Switzerland), whose associates are exclusively members of the Liebherr family.

Technology leadership and pioneering spirit

Liebherr regards itself as a pioneer. This spirit has enabled the company to make a decisive contribution to the technological history of many industries. Today, employees around the world still share the courage of the company founder to take new paths. They are all united by a passion for technology and fascinating products and the determination to perform outstanding work for their customers.

Widely diversified product portfolio

Not only is Liebherr one of the biggest construction equipment manufacturers in the world, it also provides high-quality, user-oriented products and services in a wide range of other areas. The product portfolio includes the segments earthmoving, material handling technology, deep foundation machines, mining, mobile and crawler cranes, tower cranes, concrete technology, maritime cranes, aerospace and transportation systems, gear technology and automation systems, refrigeration and freezing, components and hotels.

Customized solutions and maximum customer benefit

Liebherr solutions are characterized by maximum precision, outstanding implementation and exceptional longevity. Its mastery of key technologies enables the company to offer its customers customized solutions. For Liebherr, customer focus does not end with the product; it also encompasses a wide range of services that make a real difference.

www.liebherr.us

WARNING

Breathing diesel engine exhaust exposes you to chemicals known to the State of California to cause cancer and birth defects or other reproductive harm.

- Always start and operate the engine in a well-ventilated area.
- If in an enclosed area, vent the exhaust to the outside.
- Do not modify or tamper with exhaust system.
- Do not idle the engine except as necessary.

For more information go to www.P65warnings.ca.gov/diesel.

WARNING

This product can expose you to chemicals including lead and lead compounds, which are known to the State of California to cause cancer and birth defects or other reproductive harm.

For more information go to www.P65warnings.ca.gov.

Liebherr USA, Co.

Construction Equipment Division • 4800 Chestnut Avenue • Newport News, VA 23607, USA • Phone +1 (757) 240 4250
construction.usa@liebherr.com • www.liebherr.us • www.facebook.com/LiebherrConstruction