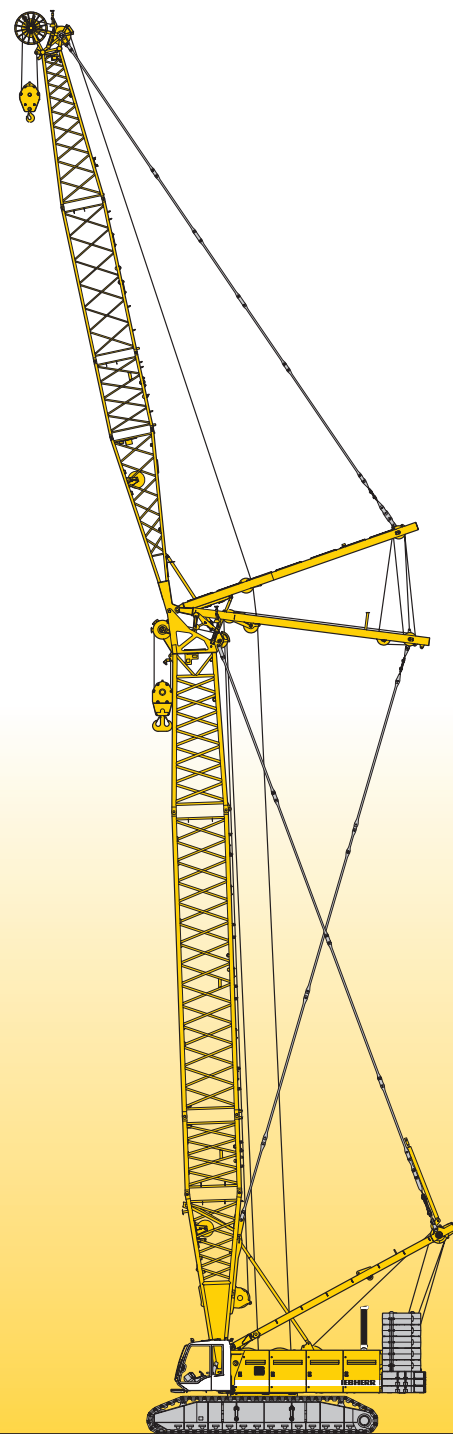


# Technical data Hydraulic lift crane

# LR 1280

Litronic®

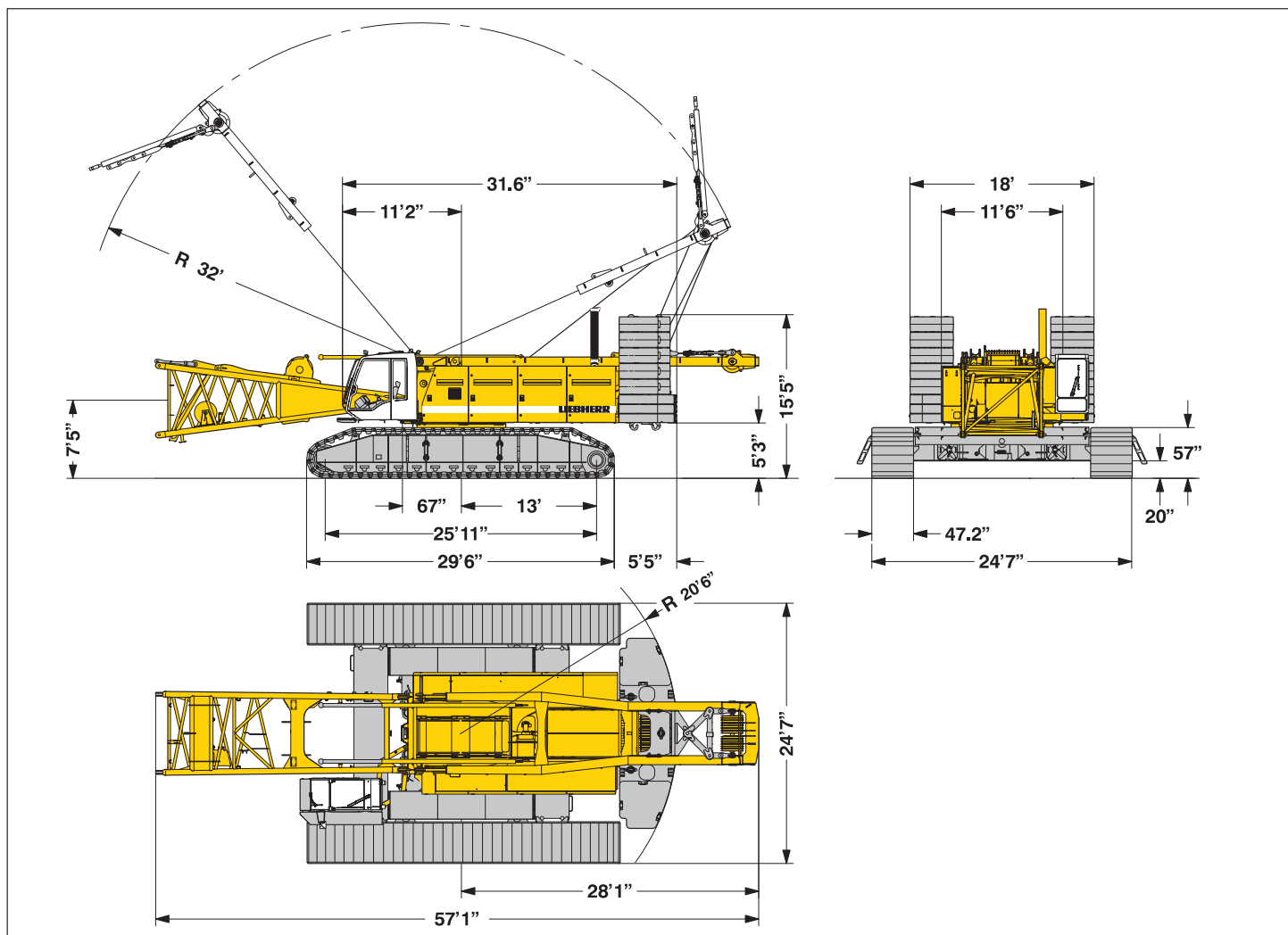
Complies with ANSI B 30.5



# LIEBHERR

# Dimensions

## Basic machine with undercarriage



## Operating weight

The operating weight includes the basic machine with crawlers, 2 main winches 33,100 lbs and 66 ft main boom, consisting of A-frame, boom foot (23 ft), boom head (23 ft), boom extension (20 ft) 188,500 lbs basic counterweight, 79,400 lbs carbody counterweight and 661,400 lbs hook block.

Total weight \_\_\_\_\_ appr. 494,700 lbs

## Ground pressure

Ground bearing pressure \_\_\_\_\_ 16.8 PSI

## Equipment

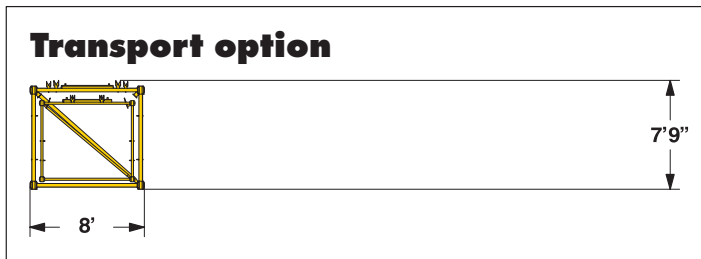
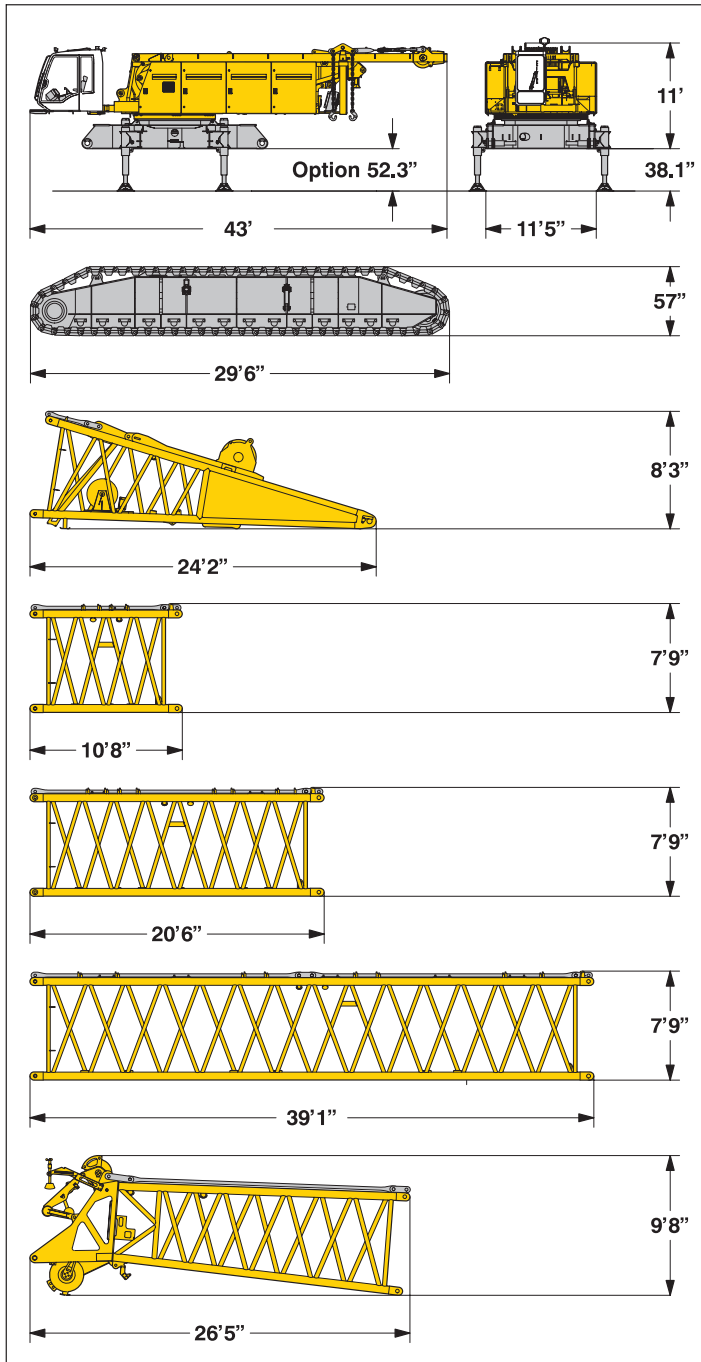
Main boom (No. 2220.xx) max. length \_\_\_\_\_ 296 ft  
 High reach (No. 2220.xx and 1916.xx) \_\_\_\_\_ 391 ft  
 Luffing jib (No. 1916.xx) max. length \_\_\_\_\_ 312 ft  
 Max. combination \_\_\_\_\_ boom 181 ft and luffing jib 312 ft  
 Fixed jib (No. 1008.xx) \_\_\_\_\_ 36 ft – 85 ft  
 Auxiliary jib 66,500 lbs lifting capacity

## Remarks

1. The lifting capacities stated are valid for lifting operation only (corresponds with crane classification according to F.E.M. 1.001, crane group A1)
2. Crane standing on firm, horizontal ground.
3. The weight of the lifting device (hoisting ropes, hook block, shackle etc.) must be deducted from the gross lifting capacity to obtain a net lifting value.
4. Additional equipment on boom (e.g. boom walkways, auxiliary jib) must be deducted to get the net lifting capacity.
5. For max. wind speed please refer to lift chart in operator's cab or manual.
6. Working radii are measured from centre of swing and under load.
7. The lifting capacities are valid for 360 degrees of swing.
8. Calculation of stability under load is based on DIN 15019 / part 2 / chart 1 and ISO 4305 Table 1 + 2, tipping angle 4°.
9. The structures are calculated according to F.E.M. 1.001 – 1998 (EN 13001-2 / 2004).
10. ANSI B 30.5

# Transport dimensions and weights

Basic machine and boom (No. 2220.xx)



\*) Including pendant straps

## Basic machine

with A-frame, 2x 33,100 lbs crane winches including wire ropes (max. 2182 ft, without crawlers, boom foot, basic counterweight and carbody counterweight)

Width	11'6"
Weight in lbs	91,700

## Crawler

**2x**

Flat track shoes	47.2"
Width	55.1"
Weight in lbs	45,300

## Boom foot (No. 2220.30)

Width	8'
Weight in lbs*	12,400

## Boom section (No. 2220.24)

**10 ft**

Width	8'
Weight in lbs*	2,500

## Boom section (No. 2220.24)

**20 ft**

Width	8'
Weight in lbs*	4,150

## Boom section (No. 2220.22)

**38 ft**

Width	8'
Weight in lbs*	6,400

## Boom head (No. 2220.24)

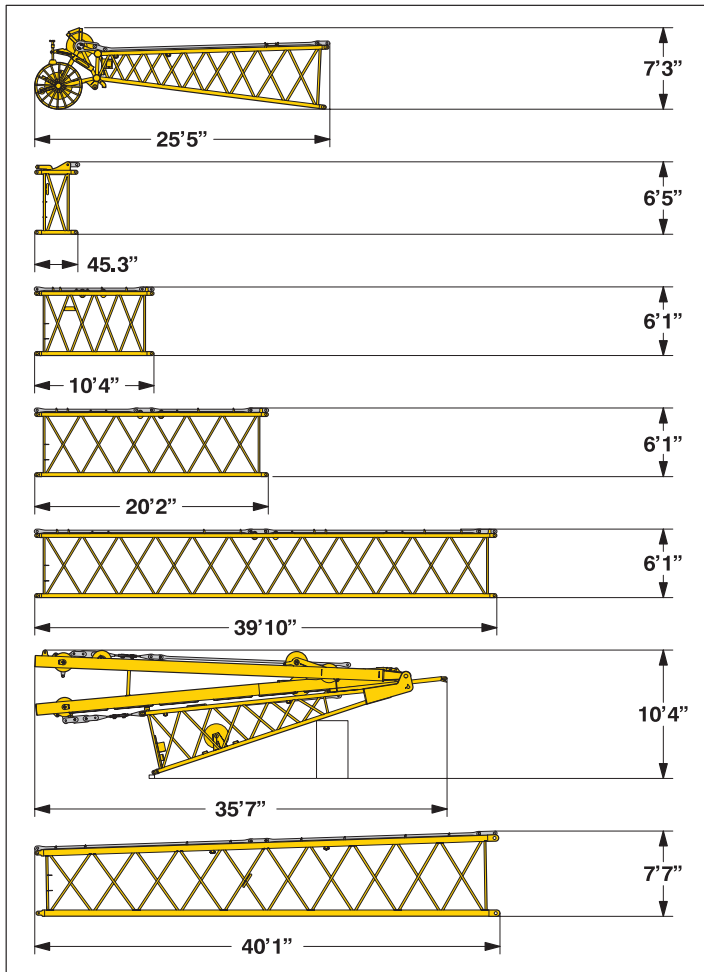
Width	8'
Weight in lbs*	10,400

## Boom transport option

No. 2220.xx/1916.xxx	38'/40'	20'/20'	10'/10'
Length	41'	20'6"	10'8"
Weight in lbs*	9,100	5,650	3,700

# Transport dimensions and weights

## Luffing jib (No. 1916.xx)



### Luffing jib head (No. 1916.21)

Width	6'9"
Weight in lbs*	3,400

### L - boom jib section (No. 1916.22) **3 ft**

Width	6'9"
Weight in lbs*	1,000

### Luffing jib section (No. 1916.18) **10 ft**

Width	6'9"
Weight in lbs*	1,210

### Luffing jib section (No. 1916.18) **20 ft**

Width	6'9"
Weight in lbs*	1,520

### Luffing jib section (No. 1916.18) **40 ft**

Width	6'9"
Weight in lbs*	2,760

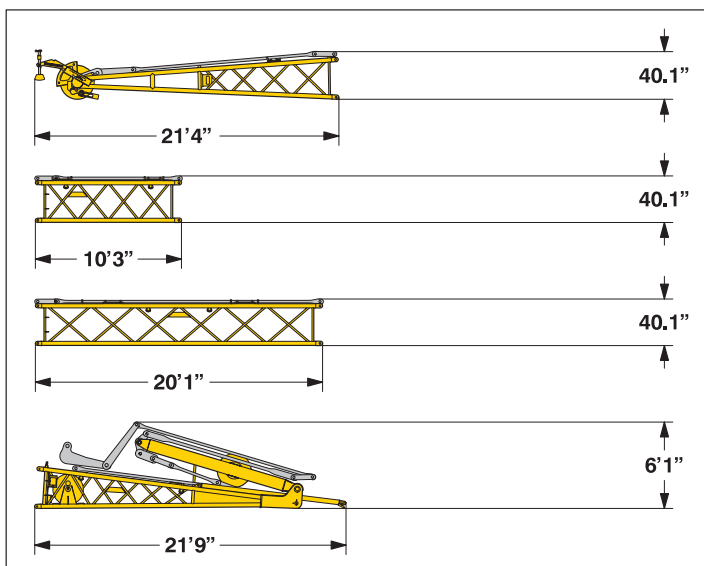
### Luffing jib foot with A-frames (No. 1916.22)

Width	6'9"
Weight in lbs*	14,110

### L - boom section tapered (No. 2320/1916.20) **40 ft**

Width	7'11"
Weight in lbs*	5,810

## Fixed jib (No. 1008.xx)



### Fixed jib head (No. 1008.20)

Width	45"
Weight in lbs*	2,060

### Fixed jib section (No. 1008.17) **10 ft**

Width	43.3"
Weight in lbs*	660

### Fixed jib section (No. 1008.17) **20 ft**

Width	43.3"
Weight in lbs*	1,010

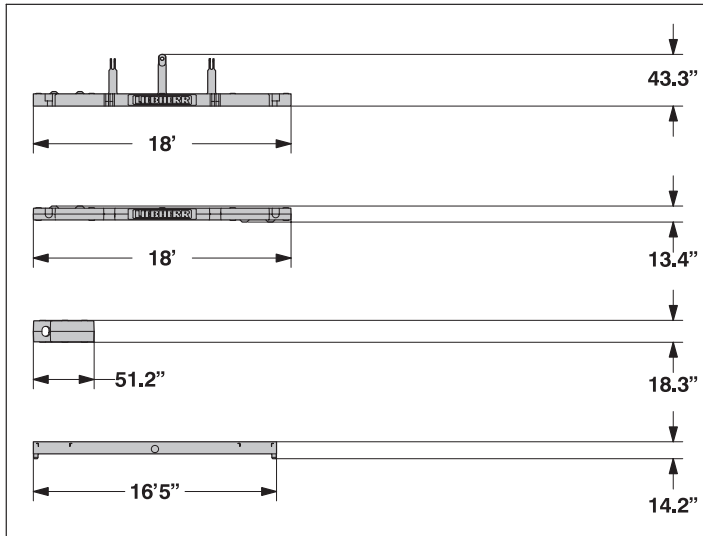
### Fixed jib foot with A-frame (No. 1008.20)

Width	59"
Weight in lbs*	4,300

\*) Including pendant straps

# Transport dimensions and weights

## Counterweights



### Counterweight

**1x**

Width	5'5"
Weight in lbs	29,300

### Counterweight

**2x**

Width	5'5"
Weight in lbs	23,400

### Counterweight

**10x**

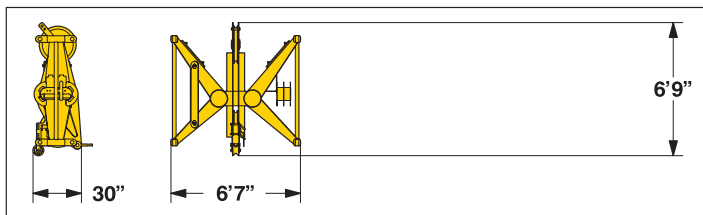
Width	4'6"
Weight in lbs	11,250

### Carbody counterweight

**4x**

Width	45.3
Weight in lbs	21,000

## Mid fall (option)

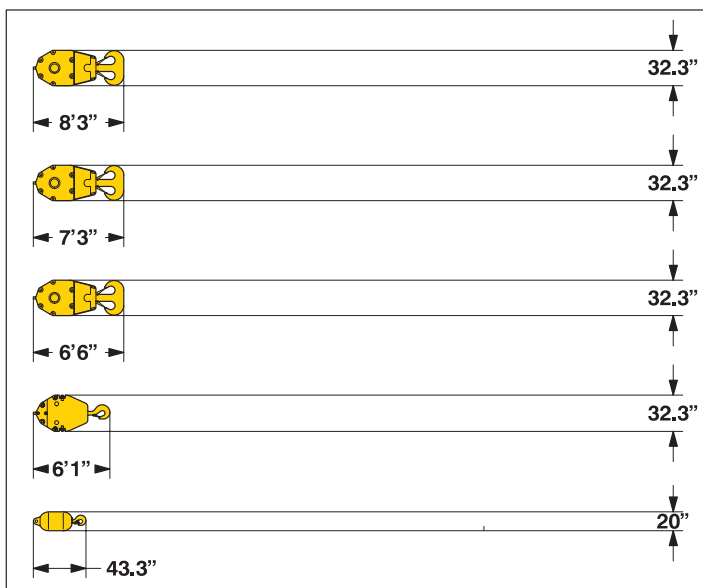


### Mid fall section (No. 1916.32)

**20 inch**

Width	30"
Weight in lbs	1,600

## Hooks



### 661,400 lbs hook block - 11 sheaves

Width	34.6" — 48.4"
Weight in lbs	7,050 — 12,150

### 330,700 lbs hook block - 5 sheaves

Width	20" — 26" — 32.3"
Weight in lbs	3,500 — 6,200 — 8,800

### 220,500 lbs hook block - 3 sheaves

Width	13.4" — 19" — 24.4"
Weight in lbs	2,400 — 4,500 — 6,600

### 110,200 lbs hook block - 1 sheave

Width	11" — 16.1" — 21.3"
Weight in lbs	1,800 — 3,500 — 5,300

### 35,300 lbs single hook

Width	20"
Weight in lbs	2,000

# Technical description



## Engine

Power rating according to ISO 9249, 536 HP at 1900 rpm  
Engine type ———— Liebherr D 9408 TI-E  
Fuel tank ———— 2x 121 gal capacity with continuous level indicator and reserve warning  
Engine complies with NRMM exhaust certification EPA / CARB Tier 2 and 97/68 EC Stage II



## Hydraulic system

An axial displacement pump supplies the open loop hydraulic system for boom luffing, jib luffing and travel. The main hoist winches and swing are operated in a closed loop system. All functions can be operated simultaneously. To minimize peak pressure an automatic working pressure cut-off is integrated in a pump. All filters are electronically monitored. The use of synthetic environmentally friendly (biodegradable) oils is possible. Working pressure ———— max. 5076 PSI  
Oil tank capacity ———— 288 gal



## Luffing jib winch

Line pull ———— max. 23,150 lbs  
Rope diameter ———— 20 mm  
Jib luffing ———— 51 sec. from 15° to 78°



## Boom winch

Line pull ———— max. 48,000 lbs  
Rope diameter ———— 24 mm  
Boom up ———— 137 sec. from 15° to 86°



## Swing

Consists of rollerbearing with external teeth, swing drive with fixed axial piston hydraulic motor, spring loaded and hydraulically released multi-disc holding brake, planetary gearbox and pinion. Free swing with hydraulic moment control reduces wear to a minimum. Alternatively the swing control can be changed to simulate closed loop speed control. Then a multi-disc holding brake acts automatically at zero swing motion. Swing speed from 0 – 1.8 rpm continuously variable.



## Main winches

Line pull (1<sup>st</sup> layer) ———— max. 47,400 lbs  
Line pull (7<sup>th</sup> layer) ———— 33,100 lbs  
Rope diameter ———— 28 mm  
Drum diameter ———— 27.7 inch  
Rope speed ft/min ———— 0 – 453  
Rope capacity in 7 layers ———— 1,870 ft  
The winches are outstanding in their compact design and easy assembly. Propulsion is via a planetary gearbox in an oil bath. Load support by the hydraulic system; additional safety factor provided by a spring loaded, multi-disc holding brake. The main winches use pressure controlled, variable flow hydraulic motors. This system features sensors that automatically adjust oil flow to provide max. winch speed depending on load. Option – winch with freefall system: Clutch and braking functions on the freefall system are provided by a compact designed, low wear and maintenance free multi-disc brake.



## Crawlers

Propulsion through axial piston motor, hydraulically released spring loaded multi-disc brake, crawler tracks, hydraulic chain tensioning device. Flat track shoes ———— 47.2 inch  
Drive speed ———— 0 – 0.8 mph



## Control

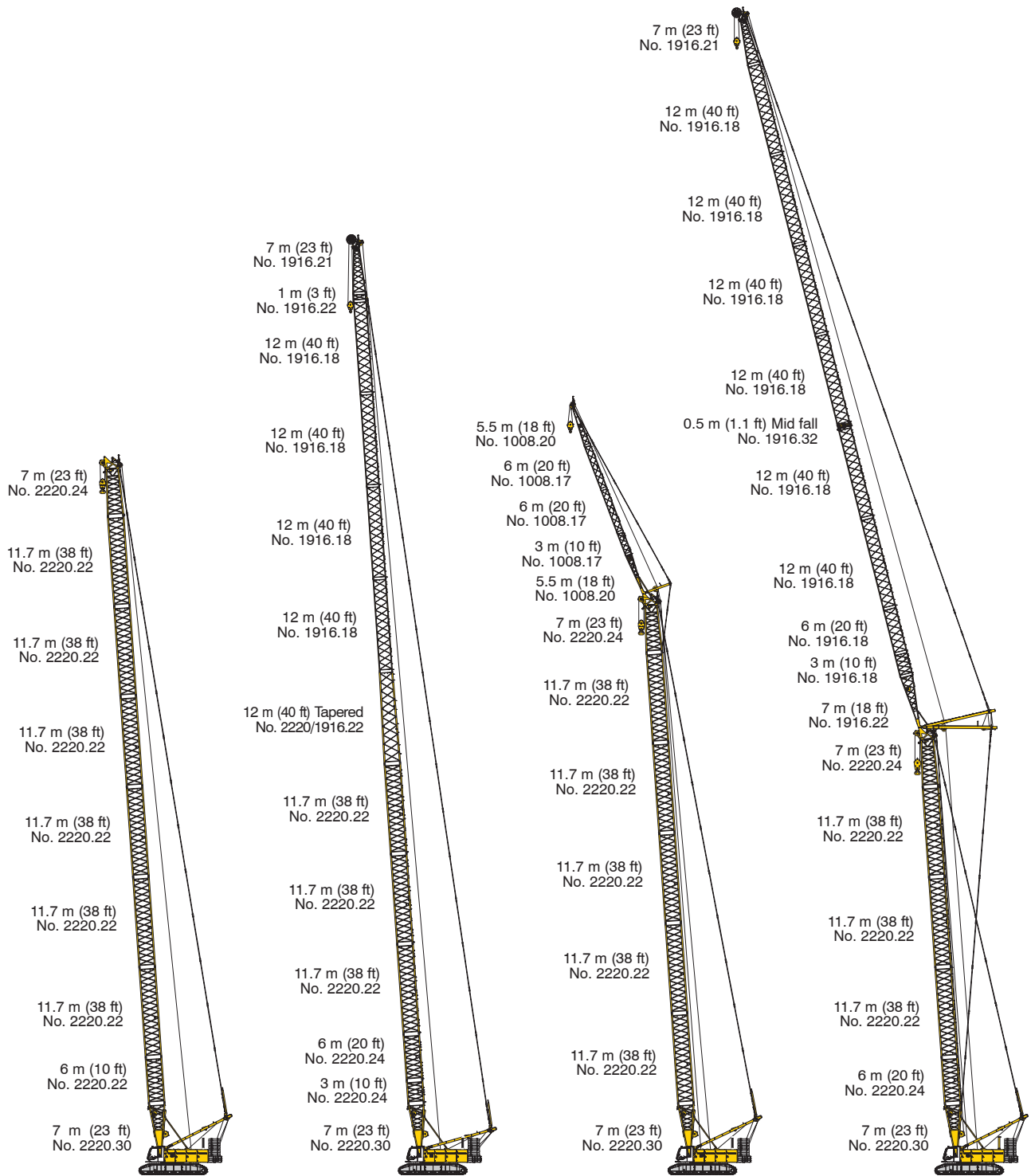
The control system – developed and manufactured by Liebherr – is designed to withstand extreme environmental conditions such as temperature, vibration and electromagnetic interference and to meet all requirements that are needed in heavy duty crane operation. Complete machine operating data are shown on a high resolution display. Standard operational information is displayed by means of graphical symbols, fault indications are displayed in plain text (more than 10 languages available). The cranes are equipped with proportional control for all main movements, which can be carried out simultaneously. A backup control system, that allows limited use of the crane is standard. This feature increases the safety and availability of the crane even further. The crane is operated with 2 multi-directional joysticks, the right for winch I and boom, the left for winch II and swing control. Option: Bi-directional double T-levers for simultaneous boom and luffing jib operation. The crawlers are activated by the two central foot pedals. Additionally, hand levers can be attached to the pedals.



## Noise emission

Noise emissions correspond with 2000/14/EC directive on noise emission by equipment used outdoors.

# Boom combinations



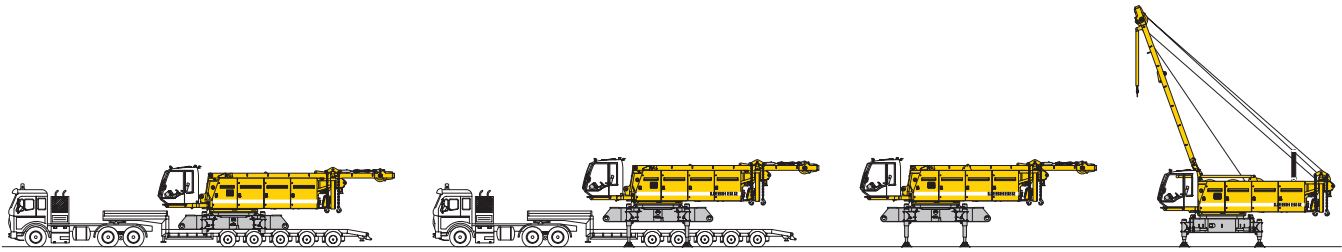
Main boom No. 2220.xx — 296 ft

Max. combination — 391 ft  
 Main boom No. 2220.xx — 168 ft  
 Tapered No. 2220/1916.xx — 40 ft  
 Luffing jib No. 1916.xx — 183 ft

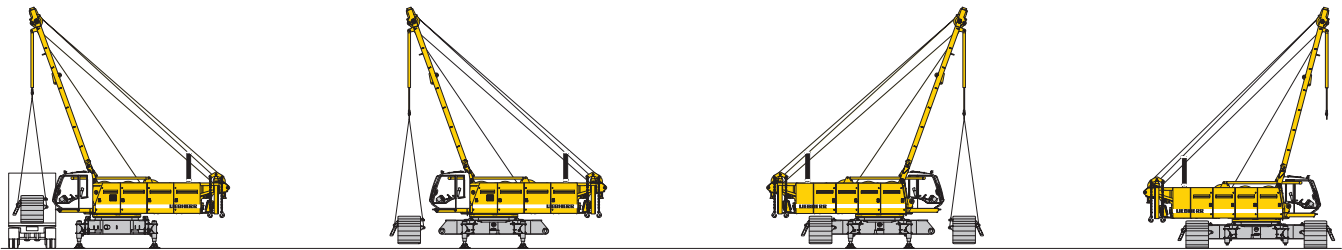
Max. combination — 323 ft  
 Main boom No. 2220.xx — 238 ft  
 Fixed jib No. 1008.xx — 85 ft

Max. combination — 493 ft  
 Main boom No. 2220.xx — 181 ft  
 Luffing jib No. 1916.xx — 312 ft  
 Main boom No. 2220.xx — 191 ft  
 Luffing jib No. 1916.xx — 243 ft

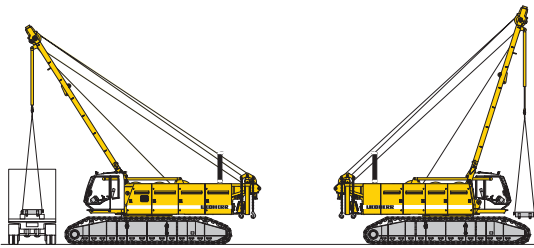
# Self assembly system



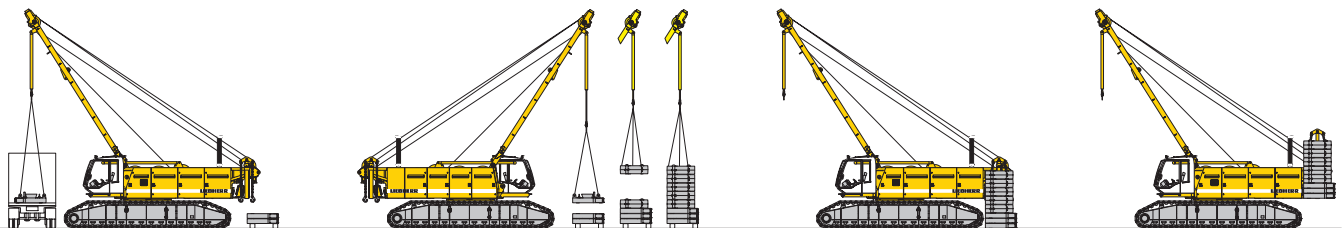
Unloading of basic machine



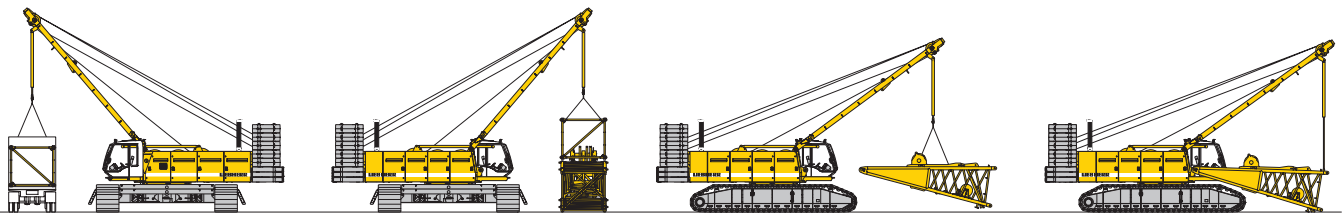
Unloading and assembly of crawlers



Unloading and assembly of carbody counterweight



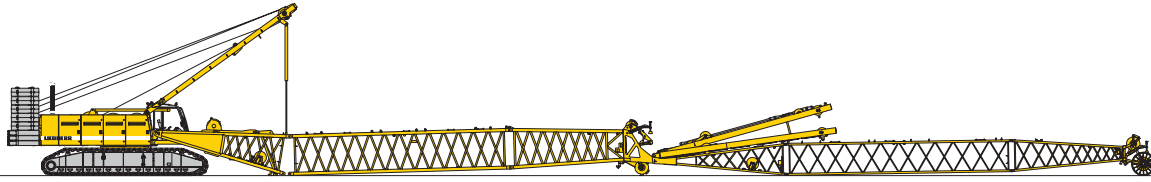
Unloading and assembly of counterweight



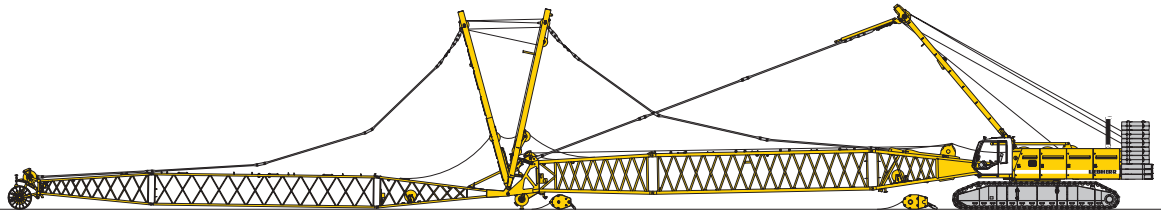
Unloading and assembly of boom – Assembly of boom foot



# Erecting of main boom to working position



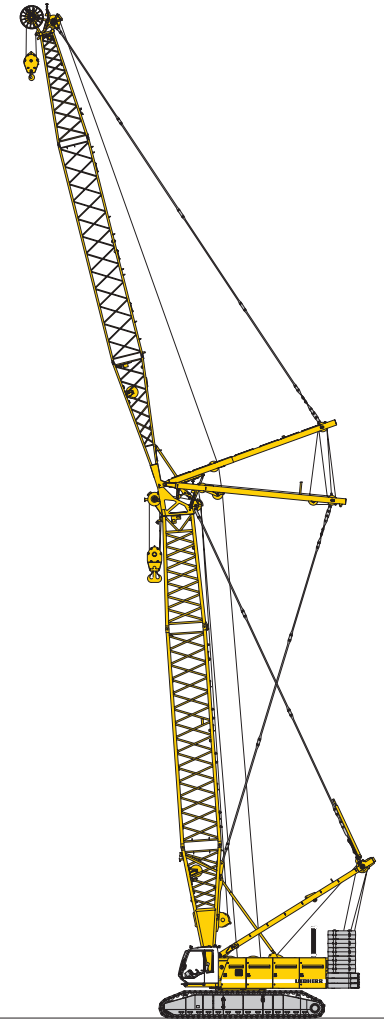
Assembly of boom



Reeving of hoist and luffing jib ropes



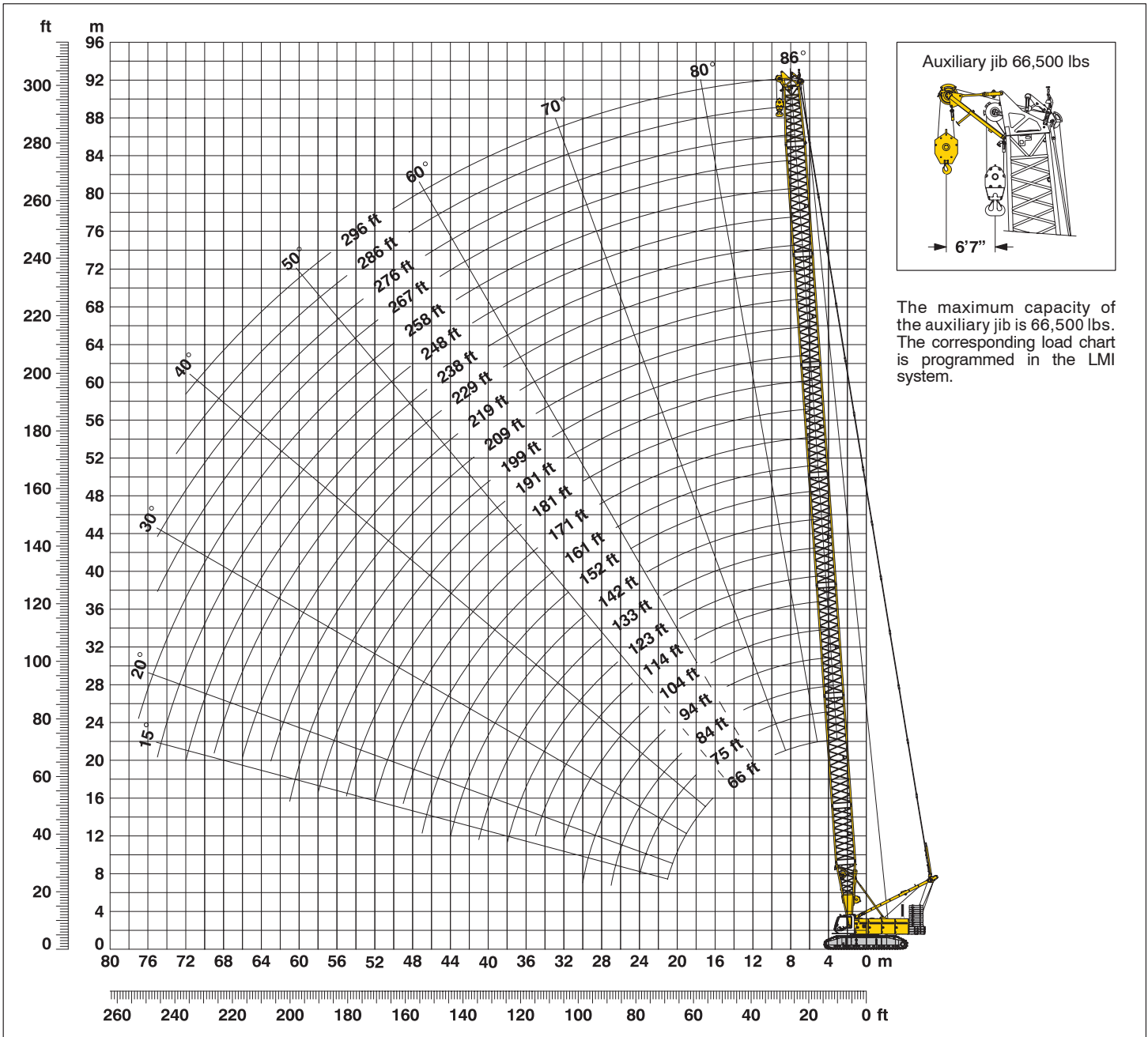
Erecting of main boom and luffing jib



Working position

# Working range - main boom (No. 2220.xx) 86° - 15°

188,500 lbs counterweight and 79,400 lbs carbody counterweight



## Main boom configuration (Table1 - No. 2220.xx)

Configuration for boom lengths (66 ft – 296 ft)

Configuration for boom lengths (66 ft – 296 ft)	Length	Amount of boom extensions																								
		23 ft	38 ft*	20 ft*	10 ft*	23 ft	38 ft*	20 ft*	10 ft*	23 ft	38 ft*	20 ft*	10 ft*	23 ft	38 ft*	20 ft*	10 ft*	23 ft	38 ft*	20 ft*	10 ft*	23 ft	38 ft*			
Boom foot	23 ft	1	1	1	1	1	1	1	1	1	1	1	1	1	1	1	1	1	1	1	1	1	1	1		
Boom insert	10 ft*		1		1		1		1		1		1		1		1		1		1		1			
Boom insert	20 ft*	1	1		1	1		1	1		1	1		1	1		1	1		1	1		1	1		
Boom insert	38 ft*			1	1	1	1	2	2	2	2	3	3	3	3	4	4	4	4	5	5	5	5	6	6	6
Boom head	23 ft	1	1	1	1	1	1	1	1	1	1	1	1	1	1	1	1	1	1	1	1	1	1	1	1	
Boom length in (ft)		66	75	84	94	104	114	123	133	142	152	161	171	181	191	199	209	219	229	238	248	258	267	276	286	296

\*Actual lengths of boom sections are metric (e.g. 3 m, 6 m, 11.7 m). The figures shown above are approximate conversions to feet.

# Lift chart for main boom (No. 2220.xx)

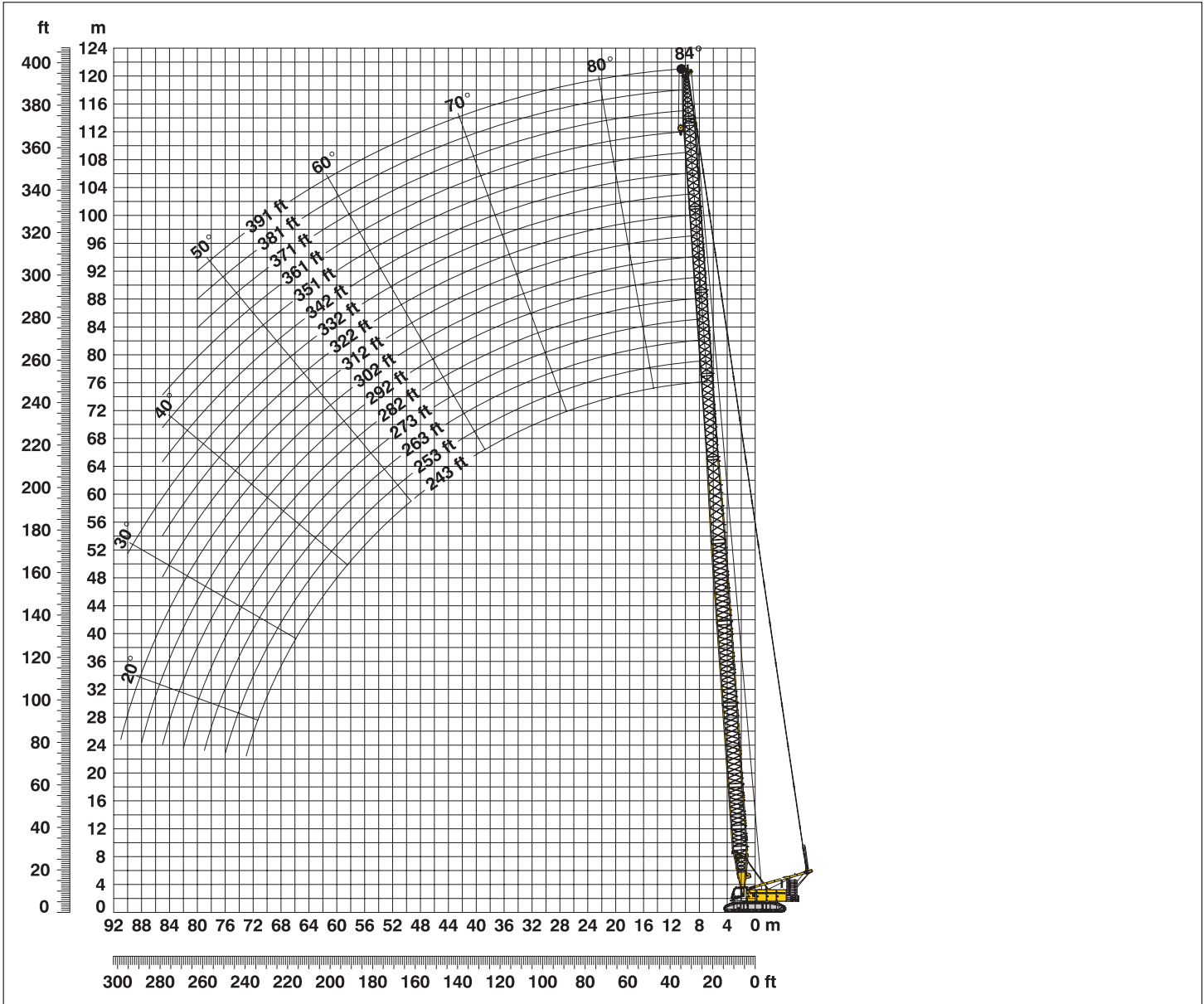
Capacities in 1000 lbs for boom lengths (66 ft – 296 ft) – with 33,100 lbs winches  
188,500 lbs counterweight and 79,400 lbs carbody counterweight

Radius	Boom length in (ft)													Radius
	66	84	104	123	142	161	181	199	219	238	258	276	296	
(ft)	lbs	lbs	lbs	lbs	lbs	lbs	lbs	lbs	lbs	lbs	lbs	lbs	lbs	(ft)
14.1	605.5													14.1
20	509.6	502.7	482.9	447.4	416.4									20
25	390.8	418.1	367.2	390.8	379.9	320.3	292.1	236.4	202.8					25
30	321.1	321.6	321.9	309.2	292.5	297.9	275.0	227.8	199.0	166.2	145.0	118.7		30
35	252.2	251.8	252.7	242.8	252.3	238.3	236.2	215.9	189.4	158.7	143.3	117.8	103.3	35
40	206.8	207.4	207.2	207.0	206.6	206.2	205.4	196.5	178.6	154.2	141.8	116.3	101.4	40
50	150.6	151.2	151.0	150.7	150.1	149.7	149.0	148.5	147.8	139.9	134.8	113.2	97.0	50
60	117.1	117.9	117.6	117.3	116.6	116.1	115.4	114.7	114.0	113.3	112.1	109.2	93.4	60
65	104.8	105.7	105.4	105.2	104.5	104.0	103.2	102.6	101.8	101.1	100.3	96.3	92.1	65
85		73.2	73.2	73.0	72.3	71.7	70.9	70.2	69.3	68.6	67.7	66.9	65.9	85
100			58.3	58.2	57.5	57.0	56.1	55.4	54.5	53.8	52.8	52.0	51.1	100
110				50.8	50.1	49.6	48.8	48.1	47.1	46.4	45.4	44.6	43.6	110
120				44.6	44.1	43.6	42.7	42.0	41.1	40.3	39.4	38.5	37.6	120
130					39.0	38.5	37.7	37.0	36.1	35.3	34.3	33.5	32.7	130
140					34.6	34.2	33.4	32.9	31.9	31.2	30.2	29.4	28.4	140
150						30.6	29.9	29.2	28.3	27.5	26.5	25.7	24.7	150
160						27.3	26.6	26.0	25.1	24.3	23.3	22.5	21.5	160
170							23.8	23.2	22.3	21.5	20.5	19.7	18.7	170
180								21.2	20.7	19.8	19.0	18.1	17.2	180
190									18.4	17.6	16.8	15.9	15.0	190
200									16.4	15.6	14.9	13.9	13.1	200
210										13.7	13.1	12.1	11.3	210
215										12.9	12.2	11.3	10.5	215
220											11.4	10.5	9.7	220
230											9.9	9.0	8.2	230
235											9.2	8.3	7.5	235
240												7.6	6.8	240
250												6.3	5.6	250
255												5.7	5.0	255
260													4.4	260
270													3.3	270

Above lift chart is for reference only. For actual lift duty please refer to lift chart in operator's cab or manual.

# L - boom high reach (No.2220 / 1916.xx) **243 ft - 391 ft**

**Working range 84° - 15°**



## L - boom configuration with 168 ft main boom (No. 2220.xx / No. 1916.xx)

### Configuration for L - boom lengths (243 ft - 391 ft)

Configuration for L - boom lengths (243 ft - 391 ft)	Length	Amount of boom and luffing jib extensions															
		1	1	1	1	1	1	1	1	1	1	1	1	1	1	1	1
Boom foot	23 ft	1	1	1	1	1	1	1	1	1	1	1	1	1	1	1	
Boom insert	10 ft*	1	1	1	1	1	1	1	1	1	1	1	1	1	1	1	
Boom insert	20 ft*	1	1	1	1	1	1	1	1	1	1	1	1	1	1	1	
Boom insert	38 ft*	3	3	3	3	3	3	3	3	3	3	3	3	3	3	3	
Tapered	40 ft*	1	1	1	1	1	1	1	1	1	1	1	1	1	1	1	
Luffing insert	10 ft*	1		1		1		1		1		1		1		1	
Luffing insert	20 ft*		1	1			1	1			1	1			1	1	
Luffing insert	40 ft*				1	1	1	1	2	2	2	2	3	3	3	4	
Luffing jib head	26 ft*	1	1	1	1	1	1	1	1	1	1	1	1	1	1	1	
Max. L - boom length (ft)		243	253	263	273	282	292	302	312	322	332	342	351	361	371	381	391

\*Actual lengths of boom sections are metric (e.g. 3 m, 6 m, 8 m, 11.7 m, 12 m). The figures shown above are approximate conversions to feet.

# Lift chart for L – boom (No. 2220 / 1916.xx)

## Main boom length 168 ft

Capacities in 1000 lbs for L – boom lengths (243 ft – 391 ft) – with 33,100 lbs winches  
188,500 lbs counterweight and 79,400 lbs carbody counterweight

Radius	Boom length in (ft)									Radius
	243	263	282	302	322	342	361	381	391	
(ft)	lbs	lbs	lbs	lbs	lbs	lbs	lbs	lbs	lbs	(ft)
32.8	137.0									32.8
35	136.6	111.7								35
40	132.8	110.6	92.8	77.9						40
45	126.4	105.8	90.0	75.6	61.7	52.3				45
50	120.8	101.8	86.5	72.4	59.6	51.2	42.6	36.3	28.5	50
60	98.2	88.3	80.4	67.7	55.8	48.2	39.9	34.5	27.3	60
80	71.4	67.1	66.5	58.0	49.1	42.8	35.4	27.3	25.0	80
100	56.2	52.3	54.3	51.2	43.4	38.2	29.1	25.3	23.0	100
110	49.5	47.1	49.2	46.8	40.3	36.5	27.7	24.3	21.9	110
120	43.7	42.5	45.0	43.4	37.1	33.6	26.1	23.6	21.0	120
130	39.4	38.9	40.0	39.8	34.7	29.6	24.1	21.9	19.7	130
140	35.4	35.8	35.8	35.5	31.8	28.4	22.5	20.4	18.3	140
150	32.3	31.4	32.2	31.6	30.1	27.1	21.3	19.2	17.1	150
160	29.2	29.1	29.1	28.9	28.7	25.9	20.3	18.3	16.1	160
170	26.4	26.3	26.3	26.1	26.0	24.9	19.5	17.6	15.4	170
180	24.0	23.9	23.9	23.7	23.5	23.3	18.8	16.9	14.8	180
190	21.8	21.7	21.7	21.5	21.4	21.1	18.1	16.4	14.3	190
200	19.9	19.8	19.8	19.5	19.4	19.0	16.6	15.8	13.8	200
210	18.1	18.0	18.0	17.8	17.7	17.1	15.3	14.1	12.8	210
220	16.5	16.4	16.4	16.2	16.1	15.5	14.2	12.5	11.6	220
230	15.0	14.9	15.0	14.7	14.3	13.8	13.3	11.2	10.5	230
235	14.2	14.3	14.2	14.0	13.5	12.9	12.7	10.6	10.0	235
240		13.6	13.4	13.2	12.8	12.2	11.9	10.1	9.6	240
250		12.1	12.0	11.7	11.6	10.7	10.4	8.9	8.8	250
255		11.3	11.4	11.0	10.8	10.1	9.6	8.2	8.2	255
260			10.7	10.3	10.0	9.6	9.0	7.5	7.5	260
270			9.3	9.1	8.6	8.3	7.8	6.3	6.2	270
275			8.6	8.6	8.0	7.5	7.3	5.8	5.6	275
280				8.0	7.4	6.8	6.8	5.3	5.1	280
290				6.8	6.3	5.5	5.6	4.3	4.1	290
295				6.2	5.4	4.8	5.0	4.0	3.7	295
300					4.4	4.3	4.5	3.6	3.3	300
310					2.6	3.3	3.5	2.9	2.7	310
320						2.5	2.6	2.2	2.3	320

Above lift chart is for reference only. For actual lift duty please refer to lift chart in operator's cab or manual.



# Lift chart – tower crane (No. 1916.xx)

Main boom angle 88°

## Main boom 84 ft

Radius (ft)	Jib length in (ft)							
	66	95	135	174	203	233	272	312
27	195.2							
35	186.9	150.3						
45	166.0	134.0	95.9					
50	152.6	124.7	92.2	68.6				
60	121.1	111.3	84.5	64.6	52.1			
65	112.9	104.9	80.7	62.8	50.9	39.2		
70	89.2	99.7	77.2	61.2	49.9	38.4	26.1	
75	33.4	93.0	74.4	60.0	48.7	37.6	24.2	
100		57.6	56.4	52.9	44.0	34.0	22.3	14.2
140			37.5	40.5	39.0	28.7	19.7	12.2
180				26.7	29.3	25.0	17.3	10.6
205					22.1	22.7	16.0	9.8
235						16.4	14.6	8.7
275							10.4	7.4
300								6.3
310								5.9

## Main boom 123 ft

Radius (ft)	Jib length in (ft)							
	66	95	135	174	203	233	272	312
28.3	163.6							
35	163.6	131.6						
45	157.7	126.3	89.3					
55	141.7	115.6	83.6	61.9				
60	124.8	111.4	81.0	60.5	48.5			
65	116.6	105.1	78.4	59.2	47.7	36.3		
75	81.4	93.7	72.6	56.6	45.9	35.2	22.7	
100		60.2	56.8	50.9	41.8	30.5	20.9	13.2
140			38.6	40.0	37.1	25.8	18.7	11.6
180				18.2	19.0	19.7	16.6	10.3
205					16.0	16.3	14.5	9.5
235						13.3	11.7	8.5
260							10.2	7.7
275							9.3	7.3
300								6.5
310								6.1

## Main boom 142 ft

Radius (ft)	Jib length in (ft)							
	66	95	135	174	203	233	272	312
29	163.6							
40	157.8	125.9						
45	149.2	121.7	85.4					
55	134.7	112.4	80.9	59.7				
60	126.3	108.5	78.4	58.4	45.9			
65	116.7	103.4	76.3	57.3	45.6	34.9		
75	83.9	92.9	71.1	54.7	44.2	34.1	21.9	
85		83.6	62.5	52.2	42.8	30.7	21.3	13.8
100		67.3	53.7	48.9	40.5	29.7	20.3	13.2
140			37.1	35.4	34.9	23.8	18.1	11.5
180				15.7	15.1	17.3	15.7	10.1
205					13.1	14.3	13.6	9.3
235						12.0	10.7	8.4
275							8.7	7.2
300								6.4
310								6.1

## Main boom 161 ft

Radius (ft)	Jib length in (ft)							
	66	95	135	174	203	233	272	312
29.6	131.6							
40	131.6	113.2						
45	131.6	110.6	79.4					
55	123.1	102.7	76.3	54.6				
60	118.0	96.9	73.9	53.7	42.2			
65	111.9	93.3	72.2	52.9	41.8	32.4		
75	85.4	85.6	67.6	50.9	40.5	29.7	20.8	
85		77.1	60.6	48.5	39.1	28.9	20.3	13.1
100		48.0	49.0	45.2	37.0	27.7	19.4	12.7
140			18.7	19.2	19.6	22.2	17.2	11.1
180				13.9	13.3	15.4	14.7	9.6
205					12.0	12.0	12.3	8.9
235						10.2	8.8	8.1
275							7.2	7.0
300								6.3
310								6.0

## Main boom 181 ft

Radius (ft)	Jib length in (ft)							
	66	95	135	174	203	233	272	312
30.3	129.2							
40	126.6	99.2						
45	120.0	97.9	72.2					
55	108.1	90.7	69.7	50.8				
60	103.2	87.2	67.4	50.0	39.6			
70	84.5	79.8	62.9	48.0	38.6	28.6		
75	80.4	76.7	60.8	47.1	38.1	28.1	19.8	
85		68.3	55.4	45.0	36.6	27.3	19.3	12.8
105		22.4	41.8	40.4	33.8	25.5	18.2	12.2
140			16.7	17.6	18.1	20.3	16.4	10.8
180				13.0	12.4	14.2	13.9	9.3
205					10.3	10.9	11.6	8.6
235						9.0	8.0	7.8
275							6.4	6.8
300								6.1
310								5.8

## Main boom 199 ft

Radius (ft)	Jib length in (ft)					
	66	95	115	135	164	
31	99.2					
40	99.2	86.3				
45	97.5	82.9	72.4			
50	94.8	80.1	70.4	60.9		
55	89.5	77.0	68.0	59.5	48.4	
60	85.4	74.1	65.5	57.7	47.3	
70	76.0	68.2	60.7	54.5	45.3	
75	72.1	56.8	57.5	52.8	44.4	
90		43.9	46.9	46.6	41.2	
105		20.0	37.0	40.2	38.0	
120			17.0	18.0	34.8	
125			16.1	17.1	17.9	
130				16.2	17.2	
140				14.7	15.9	
160					13.4	
170					11.9	

Capacities in 1000 lbs with luffing jib (No. 1916.xx) 188,500 lbs counterweight + 79,400 lbs carbody counterweight. Above lift chart is for reference only. For actual lift duty and complete chart with all available configurations please refer to lift chart in operator's cab or manual.



# Lift chart - luffing jib (No. 1916.xx)

Main boom angle 83°

## Main boom 84 ft

Radius (ft)	Jib length in (ft)							
	66	95	135	174	203	233	272	312
	lbs	lbs	lbs	lbs	lbs	lbs	lbs	lbs
40	190.7							
50	158.7	139.0						
65	113.5	113.0	86.6					
75	95.0	94.6	79.4	62.4				
80	84.9	87.4	75.9	60.5				
85		81.2	73.3	59.1	48.6			
90		75.7	68.9	57.6	47.2	36.1		
105		61.3	58.3	53.9	44.5	34.3	22.6	
110		33.4	55.3	52.4	43.7	33.8	22.3	
115			52.5	51.0	43.0	31.7	22.0	14.2
145			39.2	40.9	39.3	28.9	20.0	12.7
185				28.4	29.3	25.7	17.6	11.0
215					22.5	23.0	16.1	10.0
240						17.9	15.0	9.0
280							11.4	7.6
320								6.1

## Main boom 123 ft

Radius (ft)	Jib length in (ft)							
	66	95	135	174	203	233	272	312
	lbs	lbs	lbs	lbs	lbs	lbs	lbs	lbs
44.7	163.6							
55	138.3	128.2						
65	111.9	111.3	83.3					
80	86.5	86.1	76.3	58.4				
85	80.3	80.0	73.5	57.0	45.3			
95		69.8	67.5	54.5	44.3	33.8		
110		58.4	57.6	51.4	42.1	30.9	21.0	
120			51.8	49.2	40.8	30.0	20.5	13.1
150			39.2	38.4	37.5	27.0	18.9	11.9
190				20.5	20.7	21.7	16.9	10.4
215					17.2	18.3	15.4	9.6
245						14.5	13.7	8.6
260							12.9	8.2
285							11.4	7.5
300								7.0
320								6.3

## Main boom 142 ft

Radius (ft)	Jib length in (ft)							
	66	95	135	174	203	233	272	312
	lbs	lbs	lbs	lbs	lbs	lbs	lbs	lbs
47.1	163.5							
60	122.7	120.5						
70	101.2	100.5	80.1					
80	85.8	85.3	75.7	56.3				
85	79.6	79.2	72.9	55.7				
90		73.9	70.8	54.6	43.7			
100		65.0	62.1	52.3	42.6	30.8		
110		57.9	57.1	50.3	41.2	30.2	20.4	
115		54.8	54.0	49.3	40.5	29.8	20.3	
120			51.3	48.0	39.9	29.4	20.0	13.9
155			22.8	36.4	35.7	25.3	18.3	11.5
190				17.7	17.8	20.0	16.5	10.2
220					13.8	15.5	14.8	9.3
250						12.5	13.2	8.4
285							10.6	7.5
325								6.3

## Main boom 161 ft

Radius (ft)	Jib length in (ft)							
	66	95	135	174	203	233	272	312
	lbs	lbs	lbs	lbs	lbs	lbs	lbs	lbs
49.3	131.6							
60	121.5	112.5						
70	100.2	99.5	75.4					
85	78.9	78.4	70.5	52.9				
90	73.5	73.1	68.5	51.9	41.1			
100		61.3	62.5	50.0	40.3	29.1		
110		56.7	56.4	48.0	39.1	28.8	20.9	
120		27.5	50.7	46.0	37.9	28.2	19.1	
125			47.8	44.8	37.4	27.6	18.9	12.1
155			35.3	35.4	34.3	23.8	17.5	11.1
195				15.0	15.3	17.5	15.3	9.8
225					12.7	13.3	13.3	8.9
250						11.2	11.6	8.2
290							9.0	7.2
300								6.9
325								6.2

## Main boom 181 ft

Radius (ft)	Jib length in (ft)							
	66	95	135	174	203	233	272	312
	lbs	lbs	lbs	lbs	lbs	lbs	lbs	lbs
51.7	128.2							
65	108.7	98.0						
75	91.0	90.3	70.4					
85	78.0	77.5	67.3	49.6				
95	32.6	67.7	62.9	48.2	38.8			
105		53.9	57.5	46.3	37.9	27.6		
115		47.9	52.3	44.6	36.8	27.1	18.5	
120		45.2	49.6	43.6	36.2	26.8	18.4	
125			46.0	42.3	35.7	26.3	18.2	11.7
160			17.3	19.4	19.6	21.8	16.7	10.7
200				13.2	13.3	15.3	14.5	9.4
225					11.2	11.7	12.7	8.7
255						9.4	10.7	7.8
295							8.0	6.9
320								6.2
330								5.9

## Main boom 199 ft

Radius (ft)	Jib length in (ft)					
	66	95	115	135	164	
	lbs	lbs	lbs	lbs	lbs	
54	99.2					
65	97.7	84.0				
70	93.8	81.8	71.4			
75	89.9	78.9	70.2	60.3		
85	77.1	73.4	64.6	58.3	47.6	
90	71.9	70.7	63.6	56.8	47.1	
95	67.2	66.8	60.6	55.3	46.2	
100		57.1	57.7	54.2	45.4	
110		46.9	52.0	50.0	43.5	
120		41.6	43.3	46.9	41.5	
130			37.3	39.9	39.4	
140			34.0	34.0	37.6	
150				17.5	19.1	
160				15.8	16.9	
180					13.9	
190					12.6	

Capacities in 1000 lbs with luffing jib (No. 1916.xx) 188,500 lbs counterweight + 79,400 lbs carbody counterweight. Above lift chart is for reference only. For actual lift duty and complete chart with all available configurations please refer to lift chart in operator's cab or manual.



# Lift chart – luffing jib (No. 1916.xx)

## Main boom angle 75°

### Main boom 84 ft

Radius (ft)	Jib length in (ft)							
	66	95	135	174	203	233	272	312
60.2	119.7							
75	91.1	90.4						
90	72.8	72.3	71.3					
95	33.4	67.7	66.7					
110		56.6	55.8	54.7				
120		50.9	50.1	49.1	43.1			
135			43.3	42.3	41.4	30.5		
150			37.9	37.0	36.3	29.1	19.9	
160			34.9	34.1	33.4	28.3	19.5	
165				32.8	32.1	27.9	19.2	12.7
200				25.3	24.7	23.9	17.3	10.7
225					20.8	20.1	16.1	9.9
255						16.5	14.8	8.8
295							11.9	7.6
320								6.8
330								6.4

### Main boom 123 ft

Radius (ft)	Jib length in (ft)							
	66	95	135	174	203	233	272	312
70.1	95.0							
85	75.0	74.2						
100	61.5	60.9	59.7					
120		48.7	47.7	46.6				
130		44.1	43.2	42.1	40.3			
145			37.7	36.6	35.8	28.6		
160			32.7	32.3	30.2	27.6	18.6	
170			30.7	29.8	27.5	27.0	18.3	
175				28.7	26.4	26.6	18.1	11.9
205				23.1	21.8	21.5	16.7	10.5
235					18.3	17.1	15.5	9.5
265						14.3	13.3	8.5
280							12.1	8.1
305							10.1	7.4
320								7.0
340								6.4

### Main boom 142 ft

Radius (ft)	Jib length in (ft)							
	66	95	135	174	203	233	272	312
75.2	84.9							
90	68.2	67.3						
105	56.4	55.8	54.6					
125		45.1	44.0	42.8				
135		40.9	40.0	38.8	38.0			
150			35.0	33.9	33.2	27.6		
165			30.3	30.0	29.2	26.8	18.0	
175			27.2	27.6	27.0	26.0	17.8	
180				26.6	25.9	25.0	17.6	11.6
210				21.0	20.9	19.9	16.3	10.2
240					17.0	16.1	15.1	9.3
270						13.2	12.2	8.4
280							11.4	8.1
305							9.6	7.5
320								7.1
345								6.2

### Main boom 161 ft

Radius (ft)	Jib length in (ft)							
	66	95	135	174	203	233	272	312
80.1	76.6							
95	62.2	61.3						
110	51.9	51.2	50.0					
130		41.7	40.6	39.4				
140		38.0	37.0	35.8	35.0			
155			31.0	30.0	30.6	26.4		
170			27.4	27.2	27.0	25.6	17.2	
180			23.6	24.7	24.9	24.0	17.0	
185				23.5	23.5	23.0	16.8	11.0
215				17.9	17.5	18.4	15.7	9.7
245					14.8	13.7	13.8	8.9
275						12.2	11.2	8.1
300							9.3	7.5
310							8.7	7.3
340								5.9
350								5.4

### Main boom 181 ft

Radius (ft)	Jib length in (ft)							
	66	95	135	174	203	233	272	312
85.2	68.8							
100	56.6	55.6						
115	47.6	46.9	45.6					
135		38.4	37.3	36.0				
145		35.1	34.1	32.7	32.0			
160			28.6	28.6	28.1	25.1		
175			24.5	24.7	24.8	23.7	16.3	
185			21.2	22.3	21.1	21.9	16.2	
200				19.4	18.4	19.5	15.9	9.9
220				15.9	16.5	16.4	15.2	9.4
250					13.4	12.4	12.3	8.7
280						10.7	10.0	7.9
315							7.7	6.2
355								4.5

### Main boom 199 ft

Radius (ft)	Jib length in (ft)					
	66	95	115	135	164	
90	62.2					
105	51.5	50.5				
115	46.1	45.2	44.5			
120	43.7	42.9	42.2	41.6		
135		37.0	36.4	35.9	35.0	
140		35.4	34.8	34.2	33.4	
145		33.8	30.5	30.8	31.1	
150		27.2	29.0	30.0	29.1	
160			26.1	26.5	26.5	
170			22.1	23.6	24.6	
180				21.0	21.9	
190				18.2	19.5	
200					17.7	
215					15.5	

Capacities in 1000 lbs with luffing jib (No. 1916.xx) 188,500 lbs counterweight + 79,400 lbs carbody counterweight. Above lift chart is for reference only. For actual lift duty and complete chart with all available configurations please refer to lift chart in operator's cab or manual.

# Lift chart - luffing jib (No. 1916.xx)

Main boom angle 65°

## Main boom 84 ft

Radius (ft)	Jib length in (ft)							
	66	95	135	174	203	233	272	312
84	75.1							
105	57.1	56.5						
125		45.6	44.6					
135		33.4	40.5					
150			35.5	34.4				
165			31.4	30.4	29.6			
170			30.2	29.2	28.5			
180				27.1	26.3	25.3		
205				22.6	21.9	21.0	17.0	
210				21.9	21.2	20.3	17.0	
230					18.5	17.6	16.1	9.9
240					17.3	16.5	15.4	9.6
265						14.0	12.9	8.8
305							9.8	7.6
320								7.3
340								6.7

## Main boom 123 ft

Radius (ft)	Jib length in (ft)							
	66	95	135	174	203	233	272	312
100.2	56.0							
120	44.9	44.1						
140		36.4	35.2					
150		33.4	32.3					
165			28.6	27.4				
180			25.5	24.3	23.4			
190			23.6	22.6	21.8			
200				21.0	20.2	19.2		
220				18.3	17.5	16.5	15.3	
225				17.6	16.9	15.9	14.7	
245					14.8	13.8	12.7	9.2
255					13.8	12.9	11.7	8.9
285						10.5	9.4	8.2
320							7.2	6.1
340								5.1
360								4.1

## Main boom 142 ft

Radius (ft)	Jib length in (ft)							
	66	95	135	174	203	233	272	312
108.5	48.3							
130	38.6	37.8						
150		31.6	30.4					
160		29.0	27.9					
175			24.8	23.6				
190			22.2	21.0	20.2			
200			20.6	19.5	18.7			
205				18.8	18.0	16.9		
230				15.8	15.1	14.0	12.8	
235				15.3	14.6	13.5	12.3	
250					13.1	12.1	10.9	9.0
265					11.8	10.9	9.7	7.9
295						8.8	7.7	6.0
330							5.7	4.3
370								2.8

## Main boom 161 ft

Radius (ft)	Jib length in (ft)							
	66	95	135	174	203	233	272	312
116.4	42.0							
135	34.9	34.0						
140	33.3	32.5						
160		27.4	26.2					
170		25.2	24.1					
180			22.3	21.1				
200			19.3	18.1	17.2			
205			18.6	17.4	16.6			
215				16.2	15.4	14.3		
235				14.1	13.3	12.2	10.4	
260					11.2	10.2	8.5	6.5
270					10.4	9.4	7.9	5.9
300						7.5	6.2	4.3
340							4.3	2.6
355								2.1

## Main boom 181 ft

Radius (ft)	Jib length in (ft)							
	66	95	135	174	203	233	272	312
124.7	36.1							
145	29.8	28.9						
165		24.4	23.1					
175		22.5	21.3					
190			19.0	17.7				
205			17.0	15.8	14.9			
215			15.8	14.7	13.8			
225				13.6	12.8	11.2		
245				11.8	11.0	9.7	7.6	
250				11.4	10.6	9.3	7.2	
270					9.2	8.0	6.0	4.0
280					8.5	7.5	5.5	3.5
310						5.8	4.1	2.1
320							3.7	
345							2.8	

## Main boom 199 ft

Radius (ft)	Jib length in (ft)				
	66	95	115	135	164
132.6	31.1				
150	26.6	25.5			
155	25.4	24.5			
165		22.5	21.8		
175		20.8	20.1	19.5	
180		20.0	19.3	18.7	
190			17.9	17.3	16.4
195			17.2	16.7	15.8
200			16.6	16.1	15.2
210				14.9	14.1
220				13.9	13.1
230					12.2
240					11.3
245					10.9
250					10.5

Capacities in 1000 lbs with luffing jib (No. 1916.xx) 188,500 lbs counterweight + 79,400 lbs carbody counterweight. Above lift chart is for reference only. For actual lift duty and complete chart with all available configurations please refer to lift chart in operator's cab or manual.

# Lift chart – luffing jib (No. 1916.xx)

Main boom angle 45°

## Main boom 84 ft

Radius (ft)	Jib length in (ft)							
	66	95	135	174	203	233	272	312
123.7	42.0							
130	39.4							
150		32.3						
160		29.7						
185			23.6					
200			21.1					
215				18.1				
235				15.7				
240					14.5			
265					12.2			
295						11.3		
330							9.1	8.0
340								6.0
370								4.9
								4.4
								3.1

## Main boom 123 ft

Radius (ft)	Jib length in (ft)							
	66	95	135	174	203	233	272	
150.8	27.8							
160	25.7							
175		22.0						
185		20.4						
210			15.9					
225			14.3					
240				11.7				
260				10.2				
265					9.0			
290					7.4			
320						6.4		
325							4.9	
340								3.5
340								2.9
355								2.3

## Main boom 142 ft

Radius (ft)	Jib length in (ft)							
	66	95	135	174	203	233	272	312
164.8	22.0							
170	21.1							
190		17.2						
200		15.9						
225			12.2					
235			11.3					
255				8.6				
275				7.3				
280					6.3			
305					5.0	3.9		
330						2.9		

## Main boom 161 ft

Radius (ft)	Jib length in (ft)							
	66	95	135	174	203			
178	17.4							
185	16.5							
205		13.2						
215		12.2						
235			9.3					
250			8.3					
270				5.9				
290				4.9				
295					3.8			
300					3.6			
315					3.0			

## Main boom 181 ft

Radius (ft)	Jib length in (ft)						
	66	95	135	174			
191.9	12.9						
200	12.1						
220		9.4					
225		9.0					
250			6.1				
265			5.3				
285				3.0			
305				2.3			

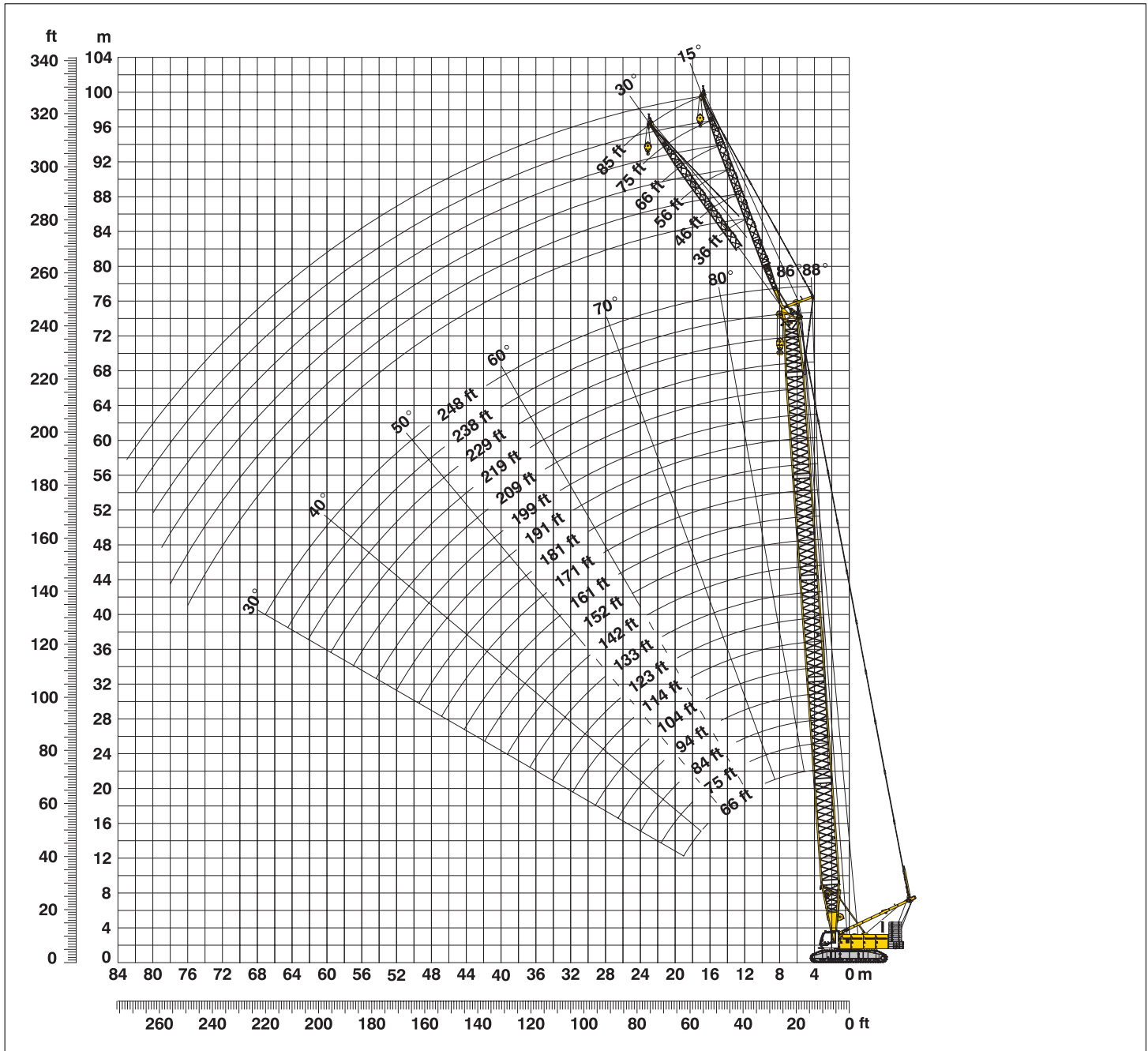
## Main boom 199 ft

Radius (ft)	Jib length in (ft)						
	66	95	135	164			
205.1	9.2						
210	8.9						
230		6.4					
235		6.2					
240		5.9					
265			3.2				
270			3.0				
275			2.8				

Capacities in 1000 lbs with luffing jib (No. 1916.xx) 188,500 lbs counterweight + 79,400 lbs carbody counterweight. Above lift chart is for reference only. For actual lift duty and complete chart with all available configurations please refer to lift chart in operator's cab or manual.

# Working range - fixed jib (No. 1008.xx) 15° and 30°

## Main boom 88°- 30°



### Boom configuration for boom lengths (66 ft - 248 ft) – see table 1 on page 10

### Fixed jib configuration for fixed jib lengths (36 ft - 85 ft)

	Length	Amount of fixed jib extensions					
		36	46	56	66	75	85
Fixed jib foot	18 ft	1	1	1	1	1	1
Fixed jib insert	10 ft*		1		1		1
Fixed jib insert	20 ft*			1	1	2	2
Fixed jib head	18 ft	1	1	1	1	1	1
Fixed jib length (ft)		36	46	56	66	75	85

\*Actual lengths of boom sections are metric (e.g. 3 m, 6 m). The figures shown above are approximate conversions to feet.

# Lift chart - fixed jib (No. 1008.xx)

Offset 15°

## Main boom 66 ft

Radius (ft)	Fixed jib length in (ft)			
	36	46	66	85
19.1	81.2			
25	81.2	81.0		
35	81.2	80.9	75.6	
40	81.2	80.9	69.1	51.3
60	78.7	67.1	51.2	41.6
70	72.5	59.4	45.1	36.7
80	64.7	53.5	39.9	33.4
90	59.9	48.1	36.1	30.6
95	56.9	46.0	34.3	29.2
105		42.1	31.8	26.9
125			28.3	22.7
145				19.9

## Main boom 94 ft

Radius (ft)	Fixed jib length in (ft)			
	36	46	66	85
20.1	80.9			
25	81.0	81.0		
35	81.1	81.0	75.8	
40	81.1	81.0	71.4	51.2
60	80.9	73.8	56.3	43.5
80	76.7	60.2	44.9	35.5
100	59.6	51.4	37.4	30.9
110	52.1	47.6	34.5	28.5
120	45.9	44.5	32.0	26.7
130		41.5	31.4	24.8
150			28.0	21.8
170				19.7

## Main boom 123 ft

Radius (ft)	Fixed jib length in (ft)			
	36	46	66	85
21.1	80.8			
25	81.0	81.2		
35	80.9	81.2	75.5	
45	80.9	81.1	68.8	49.1
60	81.0	77.7	59.1	45.0
80	78.8	67.5	48.4	38.1
100	58.6	58.2	40.9	33.4
120	45.0	45.7	35.6	29.0
145	33.5	34.2	31.6	24.9
155		30.8	30.6	23.5
175			26.2	21.3
195				19.6

## Main boom 152 ft

Radius (ft)	Fixed jib length in (ft)			
	36	46	66	85
22.2	81.2			
30	81.1	81.0		
35	81.0	81.0	74.3	
45	81.0	81.2	69.8	48.7
60	81.0	81.1	61.8	45.3
80	78.5	72.2	52.0	39.8
100	57.1	58.0	44.6	34.2
140	34.1	34.8	34.6	27.7
170	24.3	25.0	26.1	23.7
180		22.4	23.6	22.7
200			19.1	20.1
220				16.4

## Main boom 181 ft

Radius (ft)	Fixed jib length in (ft)			
	36	46	66	85
23.1	81.0			
30	80.9	80.9		
35	81.0	81.1	72.0	
45	81.2	81.2	69.7	47.9
60	81.2	81.2	63.5	45.1
80	77.4	75.4	55.1	40.7
120	42.3	43.1	41.7	33.4
160	26.0	26.7	27.9	26.9
200	16.3	16.9	18.0	18.9
205		15.9	17.0	18.0
225			13.6	14.5
245				11.5

## Main boom 199 ft

Radius (ft)	Fixed jib length in (ft)			
	36	46	66	85
23.8	81.2			
30	80.9	81.1		
40	80.9	81.0	67.2	
45	81.0	81.0	67.3	46.9
60	81.1	81.1	63.5	44.5
100	55.2	56.1	48.9	37.1
140	32.2	32.9	34.1	31.2
180	19.8	20.4	21.6	22.6
215	12.9	13.4	14.5	15.4
225		11.8	12.8	13.7
245			9.9	10.8
265				8.3

## Main boom 219 ft

Radius (ft)	Fixed jib length in (ft)			
	36	46	66	85
24.5	81.2			
30	81.0	75.9		
40	80.9	77.4	59.4	
45	81.0	77.4	60.0	46.1
80	75.8	77.0	56.4	41.1
120	40.5	41.4	42.9	33.8
160	24.2	24.9	26.1	27.2
200	14.6	15.1	16.2	17.2
230	9.6	10.1	11.1	12.0
240		8.7	9.7	10.6
260			7.1	8.0
280				5.7

## Main boom 238 ft

Radius (ft)	Fixed jib length in (ft)			
	36	46	66	85
25.1	76.2			
30	76.0	69.6		
40	75.6	69.9	54.9	
45	75.9	69.9	54.9	44.4
80	73.8	70.2	54.3	40.7
120	39.7	40.5	42.1	34.7
160	23.4	24.0	25.3	26.5
200	13.7	14.3	15.4	16.4
245	6.7	7.2	8.2	9.1
255		5.9	6.9	7.8
275			4.6	5.5
295				3.4

## Main boom 248 ft

Radius (ft)	Fixed jib length in (ft)			
	36	46	56	
25.5	73.3			
30	73.0	66.7		
35	72.4	66.7	57.3	
40	72.3	66.9	57.5	
80	72.1	62.6	57.6	
120	39.2	40.1	41.0	
160	22.9	23.5	24.3	
200	13.2	13.8	14.4	
240	6.8	7.3	7.9	
255	4.9	5.4	6.0	
265		4.3	4.8	
275			3.7	

Capacities in 1000 lbs with fixed jib (No. 1008.xx) 188,500 lbs counterweight + 79,400 lbs carbody counterweight. Above lift chart is for reference only. For actual lift duty and complete chart with all available configurations please refer to lift chart in operator's cab or manual.

# Lift chart - fixed jib (No. 1008.xx)

Offset 30°

## Main boom 66 ft

Radius (ft)	Fixed jib length in (ft)			
	36	46	66	85
27.8	81.2			
35	81.2	66.4		
50	66.5	55.0	40.8	
60	61.3	48.5	35.9	31.4
70	55.1	43.8	32.9	28.0
80	50.5	40.3	31.1	25.1
90	47.2	37.3	28.6	22.8
100	45.0	35.3	26.5	21.1
110		33.9	24.8	19.5
130			22.8	17.2
140				16.5
150				16.1

## Main boom 94 ft

Radius (ft)	Fixed jib length in (ft)			
	36	46	66	85
28.8	81.0			
35	81.1	67.2		
50	72.1	58.1	41.4	
60	64.8	52.6	37.6	29.8
80	56.4	44.2	32.3	26.1
90	52.7	41.2	30.9	24.2
100	49.5	38.8	28.8	22.4
110	47.2	36.7	27.1	21.0
120	45.6	35.3	25.6	19.7
130		34.3	24.4	18.7
150			23.0	17.0
170				16.2

## Main boom 123 ft

Radius (ft)	Fixed jib length in (ft)			
	36	46	66	85
29.8	81.1			
40	80.9	65.9		
50	75.5	60.4	41.9	
65	65.2	53.2	37.0	30.5
80	61.8	47.4	33.4	27.1
100	54.2	41.8	30.8	23.6
120	45.6	38.0	27.5	21.0
140	35.8	35.3	25.1	18.9
150	32.0	32.9	24.2	18.2
160		29.4	23.5	17.4
180			22.7	16.4
200				16.0

## Main boom 152 ft

Radius (ft)	Fixed jib length in (ft)			
	36	46	66	85
30.9	81.0			
40	80.8	66.0		
50	78.6	61.7	42.2	
65	70.1	55.0	37.7	30.8
80	63.9	49.8	34.2	27.6
100	58.0	44.6	31.6	24.6
120	44.3	40.6	29.2	21.9
140	34.6	35.5	26.7	20.0
175	23.2	24.0	23.7	17.6
185		21.4	22.9	17.1
205			18.3	16.4
225				15.8

## Main boom 181 ft

Radius (ft)	Fixed jib length in (ft)			
	36	46	66	85
31.9	81.0			
40	81.2	66.4		
55	77.8	60.7	40.9	
65	72.4	56.7	38.3	30.1
80	64.9	52.1	35.1	27.9
100	57.3	46.6	32.5	25.1
120	43.3	42.5	30.6	22.8
160	26.6	27.4	26.1	19.3
200	16.5	17.2	18.5	17.2
205		16.2	17.5	17.0
225			13.8	15.0
245				11.8

## Main boom 199 ft

Radius (ft)	Fixed jib length in (ft)			
	36	46	66	85
32.5	79.8			
40	79.9	64.7		
55	79.2	61.3	41.1	
65	73.8	57.8	38.7	27.8
80	67.9	53.1	35.7	27.1
120	42.6	43.6	31.0	23.3
160	25.8	26.7	26.9	19.9
200	15.9	16.5	17.9	17.6
215	13.0	13.7	15.0	16.2
225		12.0	13.2	14.4
245			10.1	11.3
265				8.5

## Main boom 219 ft

Radius (ft)	Fixed jib length in (ft)			
	36	46	66	85
33.2	74.3			
40	74.3	60.3		
55	75.2	60.3	41.3	
65	73.2	58.7	39.0	25.7
80	69.7	53.9	36.2	25.8
120	41.7	42.8	31.5	23.8
160	24.9	25.8	27.5	20.5
200	15.0	15.7	17.1	18.2
230	9.7	10.4	11.6	12.8
240		8.8	10.1	11.2
260			7.3	8.4
280				5.9

## Main boom 238 ft

Radius (ft)	Fixed jib length in (ft)			
	36	46	66	85
33.8	67.3			
40	67.4	54.9		
55	68.0	56.0	41.3	
65	68.5	56.2	39.3	29.1
80	69.0	53.8	36.6	24.0
120	41.0	42.1	32.0	24.1
160	24.2	25.0	26.8	21.0
200	14.2	14.9	16.3	17.7
245	6.9	7.5	8.7	9.8
255		6.1	7.3	8.4
275			4.8	5.9
295				3.6

## Main boom 248 ft

Radius (ft)	Fixed jib length in (ft)			
	36	46	56	
34.2	60.0			
45	60.0	53.4		
50	60.1	53.6	49.8	
60	60.3	53.8	48.3	
80	60.7	53.0	44.1	
120	40.5	41.7	37.5	
160	23.7	24.6	25.5	
200	13.7	14.4	15.2	
240	7.1	7.7	8.4	
255	5.1	5.7	6.3	
265		4.4	5.1	
275			3.9	

Capacities in 1000 lbs with fixed jib (No. 1008.xx) 188,500 lbs counterweight + 79,400 lbs carbody counterweight. Above lift chart is for reference only. For actual lift duty and complete chart with all available configurations please refer to lift chart in operator's cab or manual.

# Notice

