

Derrick Equipment

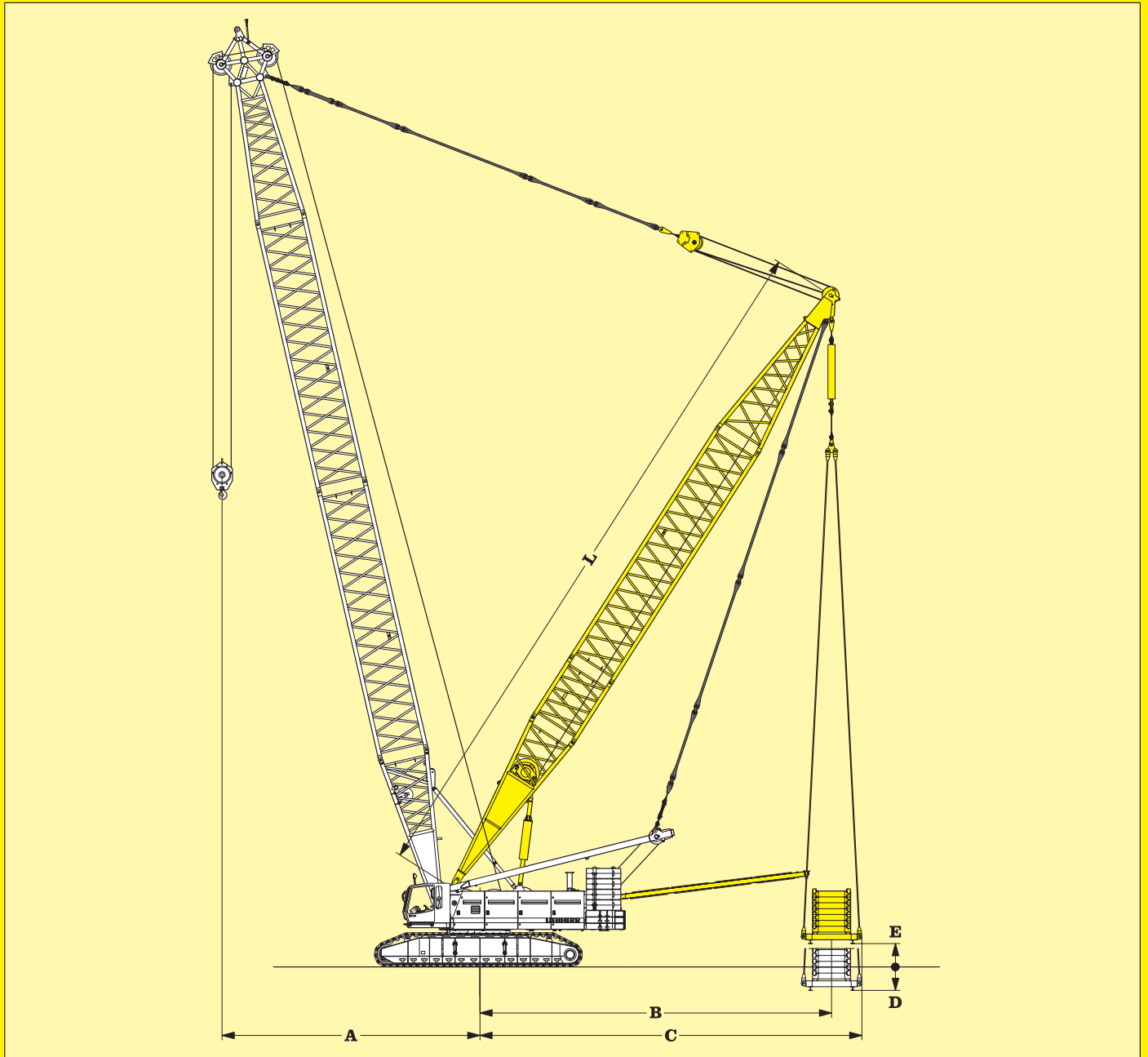
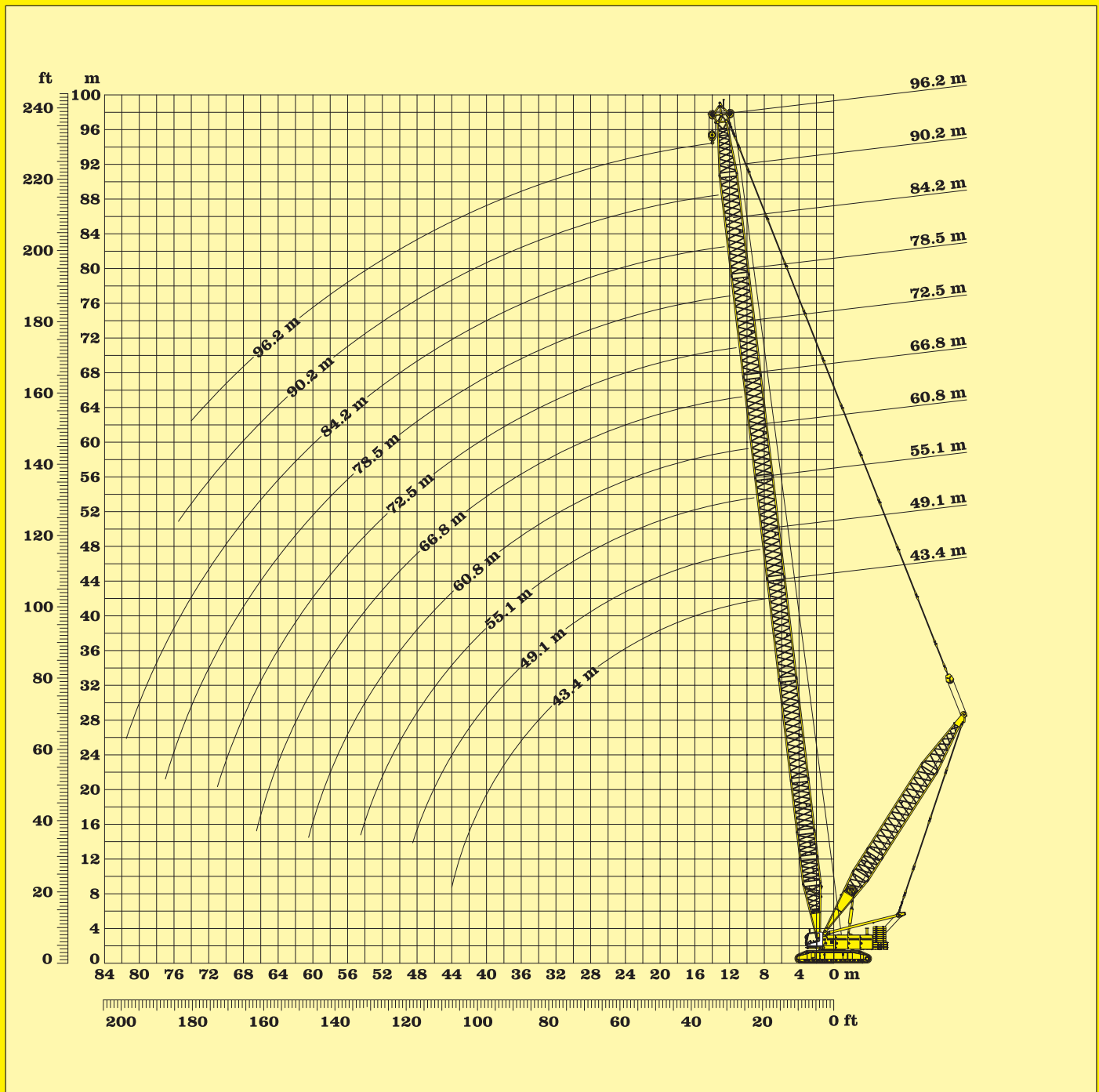


Fig. 1: Dimensions in mm

A Working radius		D Displacement of counterweight frame below ground level	1000
B Centre of rotation - centre of counterweight	15000	E Displacement of counterweight frame above ground level	1000
C Tail swing radius with susp. counterweight	16300		
L Derrick length	30000		

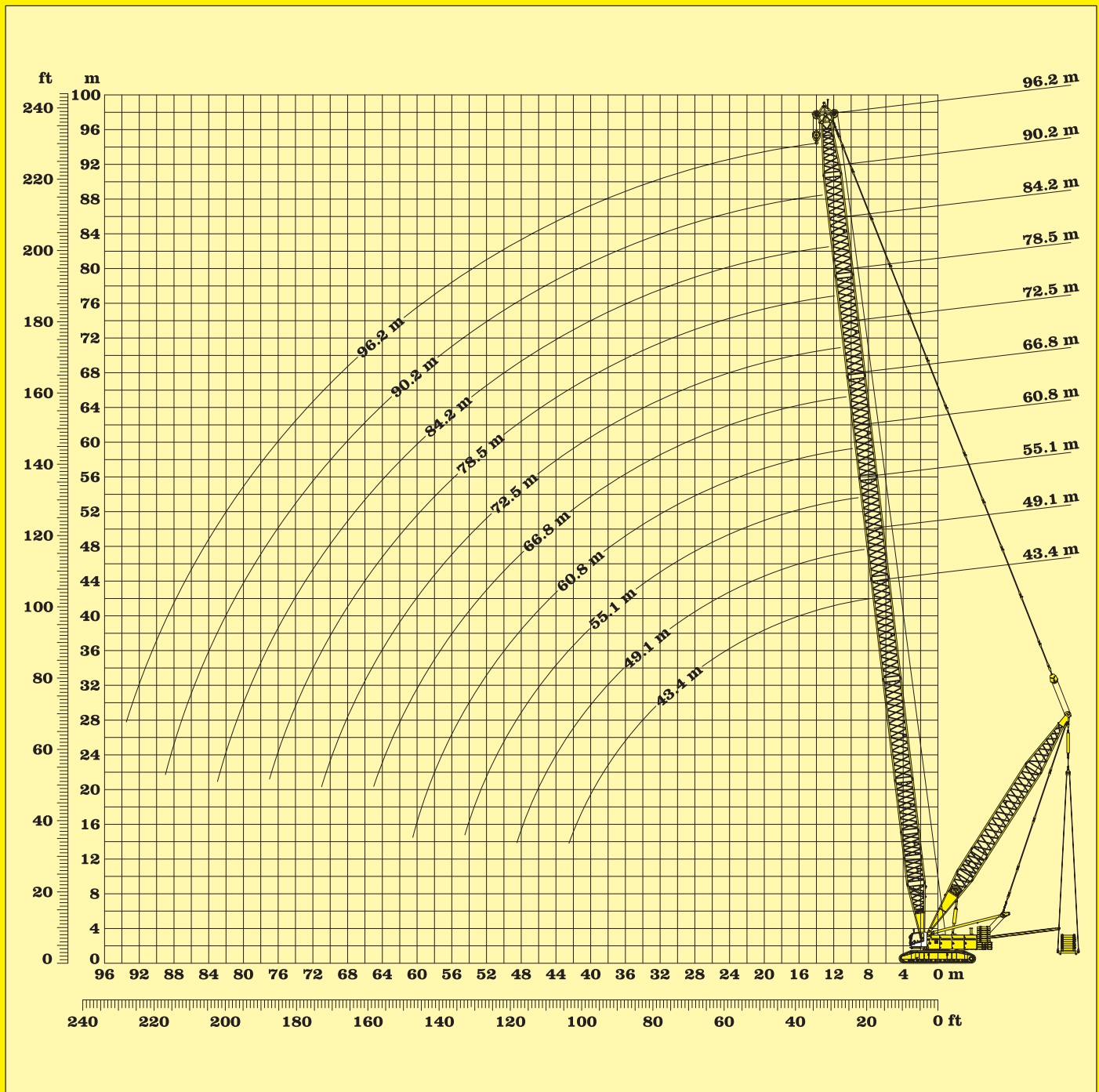


Working range - main boom with derrick

Capacities in metric tons for boom length (HPT) between 43.4 m and 96.2 m: 75.3 t counterweight and 27 t carbody counterweight										
Boom length (HPT)	43.4 m	49.1 m	55.1 m	60.8 m	66.8 m	72.5 m	78.5 m	84.2 m	90.2 m	96.2 m
Radius in (m)	t	t	t	t	t	t	t	t	t	t
9.5	98.4	89.8	90.2	80.4						
11.0	87.4	84.1	81.0	77.3	71.0	63.7	56.3			
12.5	74.1	73.2	70.4	67.8	65.2	61.5	56.0	47.9	42.5	
14.0	66.4	63.4	62.1	60.1	57.4	55.1	52.5	46.7	42.2	37.0
15.5	58.9	57.4	54.6	53.4	51.5	49.3	47.0	43.7	40.6	36.2
17.0	52.0	51.5	49.8	47.7	46.0	44.6	42.6	40.2	37.7	34.4
18.5	48.6	45.7	45.2	43.8	41.5	40.0	38.7	36.7	34.8	32.0
20.0	45.2	42.7	40.6	40.0	38.2	36.4	34.8	33.3	31.9	29.7
21.5	41.8	40.1	37.5	36.2	34.9	33.8	32.0	29.8	29.0	27.2
23.0	38.7	37.4	35.3	33.1	31.7	31.1	29.7	27.6	26.1	24.8
24.5	36.3	34.8	33.2	31.4	28.7	28.5	27.5	25.8	24.4	22.4
26.0	33.9	32.5	31.1	29.7	27.4	25.9	25.2	24.0	22.8	20.8
27.5	31.4	30.7	29.0	27.9	26.1	24.5	23.0	22.3	21.2	19.4
29.0	29.1	28.8	27.4	26.2	24.8	23.3	21.4	20.5	19.6	18.0
30.5	27.1	26.9	25.9	24.5	23.4	22.2	20.5	18.9	18.1	16.6
32.0	25.3	25.1	24.5	23.3	22.1	21.0	19.5	18.1	16.5	15.1
33.5	23.6	23.3	23.1	22.1	20.9	19.9	18.5	17.2	15.7	13.7
35.0	22.2	22.0	21.7	20.9	19.9	18.7	17.6	16.3	14.9	12.8
36.5	20.8	20.6	20.2	19.8	18.9	17.7	16.6	15.5	14.1	12.2
38.0	19.6	19.4	19.0	18.6	17.9	16.8	15.7	14.6	13.3	11.5
39.5	18.4	18.2	17.9	17.4	16.9	15.9	14.8	13.7	12.5	10.9
41.0	17.3	17.2	16.9	16.3	15.8	15.1	14.1	12.8	11.7	10.2
42.5	16.4	16.2	15.9	15.6	14.8	14.2	13.3	12.1	10.9	9.6
44.0	14.1	15.3	15.0	14.8	13.8	13.4	12.6	11.5	10.2	8.9
45.5		14.4	14.2	14.0	13.1	12.5	11.8	10.9	9.6	8.3
47.0		13.6	13.4	13.2	12.4	11.6	11.1	10.3	9.1	7.7
48.5		12.9	12.6	12.4	11.8	10.8	10.3	9.6	8.6	7.2
50.0			12.0	11.8	11.2	10.3	9.6	9.0	8.0	6.7
51.5			11.3	11.1	10.6	9.8	8.8	8.4	7.5	6.3
53.0			10.7	10.5	10.0	9.3	8.3	7.8	7.0	5.9
54.5			10.1	9.9	9.4	8.8	7.9	7.1	6.5	5.4
56.0				9.3	8.7	8.3	7.4	6.6	6.0	5.0
57.5				8.7	8.2	7.8	7.0	6.2	5.5	4.5
59.0				8.2	7.7	7.3	6.6	5.8	5.0	4.1
60.5				7.6	7.2	6.8	6.2	5.5	4.6	3.7
62.0					6.8	6.3	5.8	5.1	4.3	3.2
63.5					6.3	6.0	5.4	4.8	4.0	2.8
65.0					5.8	5.6	5.0	4.4	3.7	2.6
66.5					4.9	5.1	4.6	4.0	3.4	2.3
68.0						4.7	4.3	3.7	3.1	2.1
69.5						4.4	4.0	3.3	2.8	1.9
71.0						4.0	3.6	3.0	2.5	1.6
72.5							3.2	2.7	2.2	1.4
74.0							2.9	2.5	1.9	1.2
75.5							2.6	2.2	1.2	
77.0							2.2	1.9		
78.5								1.6		
80.0								1.3		
81.5								1.0		
Hoist rope reeving minimum	10	9	8	7	6	5	5	4	4	3

Above lift chart is for reference only. For actual lift duty please refer to lift chart in operator's cab or manual.

Lifting capacities - main boom with derrick

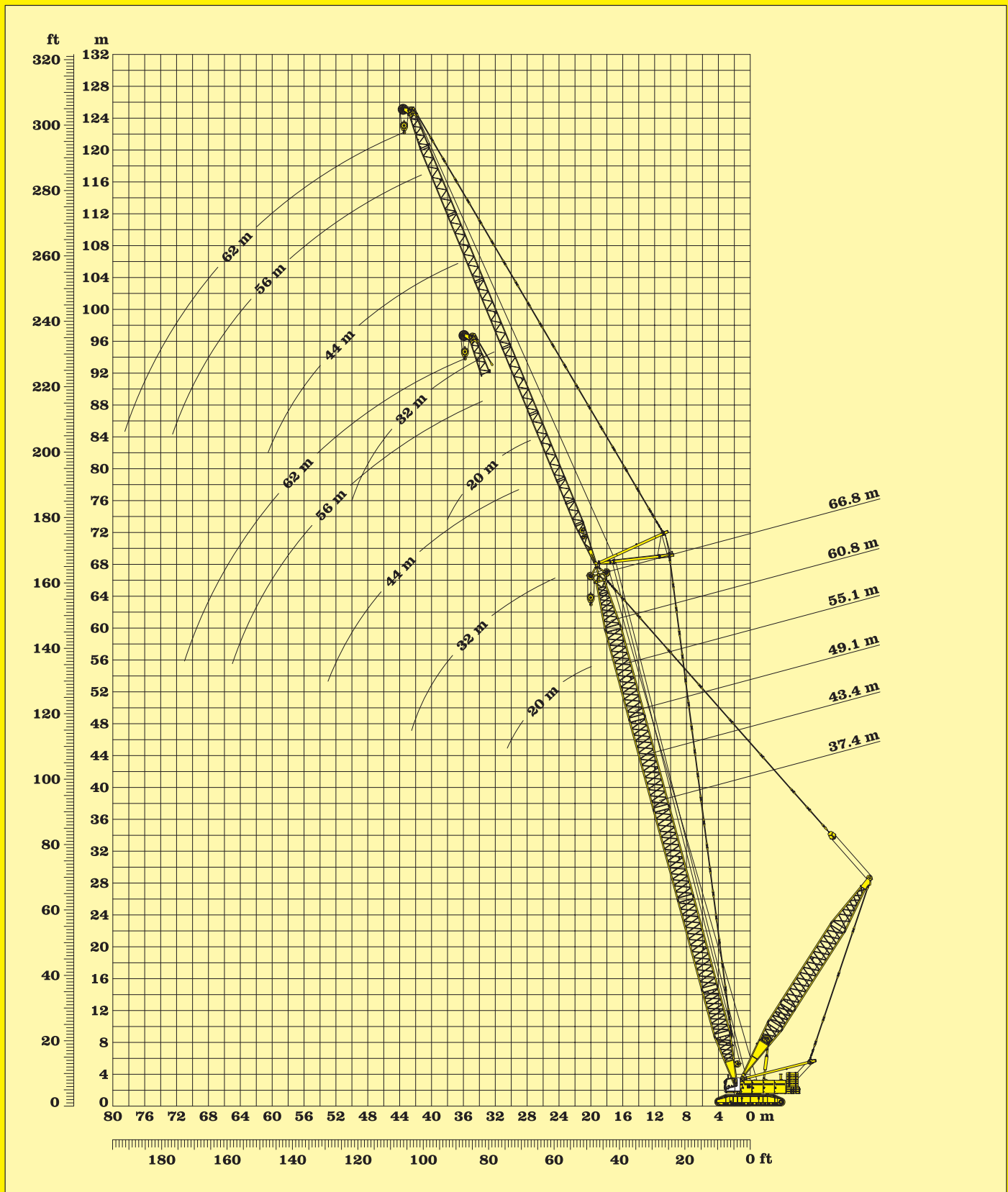


Working range - main boom with derrick and suspended counterweight

Capacities in metric tons for boom length (HPT) between 43.4 m and 96.2 m: 75.3 t counterweight, 27 t carbody counterweight and max. 120 t suspended counterweight										
Boom length (HPT)	43.4 m	49.1 m	55.1 m	60.8 m	66.8 m	72.5 m	78.5 m	84.2 m	90.2 m	96.2 m
Radius in (m)	t	t	t	t	t	t	t	t	t	t
9.5	130.6	104.8	99.9	83.8						
11.0	134.3	114.4	99.8	83.8	73.1	62.1	55.1			
12.5	133.2	113.7	99.2	83.8	73.1	62.1	55.1	46.9	41.5	
14.0	131.8	112.9	98.4	83.8	73.1	62.1	55.1	46.9	41.5	36.6
15.5	130.5	111.9	97.7	83.8	73.1	62.1	55.1	46.9	41.5	36.6
17.0	127.9	110.9	97.0	83.4	73.1	62.1	55.1	46.9	41.5	36.5
18.5	121.3	109.5	96.2	82.8	72.7	62.0	55.1	46.9	41.5	36.2
20.0	114.8	105.6	95.4	82.2	72.2	61.7	55.0	46.9	41.5	35.7
21.5	108.2	101.3	93.0	81.7	71.8	61.4	54.7	46.7	41.5	35.3
23.0	101.9	97.1	89.9	80.3	71.3	61.0	54.4	46.4	41.2	34.8
24.5	96.0	92.8	86.9	78.4	70.6	60.6	54.0	46.0	40.7	34.2
26.0	90.1	88.4	83.8	76.5	69.2	60.2	53.7	45.7	40.1	33.6
27.5	84.1	83.7	80.8	74.7	67.9	59.6	53.3	45.3	39.6	33.0
29.0	78.2	79.1	77.1	72.8	66.6	58.9	52.8	44.9	39.0	32.5
30.5	73.3	74.4	73.3	70.7	65.3	58.2	52.3	44.5	38.5	31.9
32.0	69.7	69.8	69.4	67.9	64.0	57.5	51.7	44.2	38.1	31.3
33.5	66.1	65.3	65.6	65.0	62.4	56.8	51.2	43.8	37.8	30.8
35.0	62.5	62.4	61.7	62.1	60.0	56.1	50.7	43.5	37.6	30.5
36.5	58.9	59.6	57.9	59.1	57.6	54.8	50.1	43.1	37.3	30.3
38.0	55.4	56.8	55.0	56.2	55.2	52.9	49.6	42.8	37.1	30.0
39.5	52.6	54.0	52.9	53.3	52.8	51.0	48.4	42.4	36.8	29.8
41.0	49.9	51.1	50.8	50.5	50.4	49.0	46.8	42.0	36.6	29.6
42.5	47.1	48.4	48.7	48.6	47.9	47.1	45.2	41.0	36.4	29.3
44.0		46.2	46.6	46.7	45.5	45.1	43.7	39.8	36.0	29.1
45.5		43.9	44.5	44.9	43.6	43.2	42.1	38.7	35.2	28.9
47.0		41.7	42.4	43.0	42.1	41.2	40.5	37.6	34.3	28.5
48.5		39.5	40.6	41.1	40.6	39.4	38.9	36.5	33.5	27.9
50.0			38.8	39.3	39.1	38.2	37.3	35.3	32.6	27.3
51.5			37.1	37.4	37.6	36.9	35.7	34.2	31.8	26.7
53.0			35.4	35.8	36.1	35.6	34.5	33.1	30.9	26.2
54.5			33.6	34.4	34.5	34.3	33.4	31.9	30.1	25.6
56.0				33.0	33.0	33.1	32.4	30.9	29.2	25.0
57.5				31.6	31.6	31.8	31.3	30.0	28.3	24.4
59.0				30.2	30.5	30.5	30.2	29.1	27.5	23.8
60.5				28.8	29.3	29.2	29.1	28.1	26.7	23.2
62.0					28.2	28.0	28.1	27.2	26.0	22.6
63.5					27.0	27.1	27.0	26.3	25.2	22.1
65.0					25.8	26.1	25.9	25.4	24.5	21.5
66.5						25.1	24.8	24.5	23.7	20.9
68.0						24.1	24.0	23.6	23.0	20.4
69.5						23.1	23.2	22.7	22.2	19.8
71.0						22.1	22.3	21.8	21.5	19.3
72.5							21.5	21.0	20.7	18.7
74.0							20.7	20.3	20.0	18.2
75.5							19.8	19.6	19.2	17.6
77.0							19.0	18.9	18.6	17.0
78.5								18.2	17.9	16.5
80.0								17.5	17.3	15.9
81.5								16.8	16.7	15.3
83.0								16.1	16.1	14.7
84.5									15.4	14.0
86.0									14.8	13.3
87.5									14.2	12.7
89.0									13.5	12.0
90.5										11.3
92.0										10.7
93.5										10.0
Hoist rope reeving minimum	10	9	8	7	6	5	5	4	4	3

The weight of the suspended counterweight may vary and needs to be adapted to the actual lift. Above lift chart is for reference only. For actual lift duty please refer to lift chart in operator's cab or manual.

Lifting capacities - main boom with derrick and suspended counterweight



Working range - luffing jib with derrick main boom 75°

Main boom (HPT)

37.4 m

Main boom (HPT)

43.4 m

Capacities in metric tons with luffing jib (NDL) Jib length between 20 m and 62 m 75.3 t counterweight + 27 t carbody counterweight					
Jib (NDL)	20m	32m	44m	56m	62m
Radius in (m)	t	t	t	t	t
20.0	39.6				
21.5	38.6				
23.0	36.1				
24.5	33.9	29.9			
26.0	31.8	29.8			
27.5	29.9	28.3			
29.0	28.3	26.9	19.8		
30.5	26.8	25.5	19.8		
32.0		24.3	19.6		
33.5		23.2	19.2	10.5	
35.0		22.1	18.9	10.5	
36.5		21.0	18.6	10.5	8.0
38.0		20.2	18.2	10.4	8.0
39.5		19.4	17.6	10.3	7.9
41.0		18.6	17.0	10.2	7.9
42.5		17.8	16.4	10.1	7.8
44.0			15.8	10.0	7.8
45.5			15.3	9.9	7.7
47.0			14.7	9.8	7.6
48.5			14.2	9.6	7.6
50.0			13.6	9.5	7.5
51.5			13.1	9.4	7.4
53.0			12.5	9.3	7.4
54.5				9.2	7.3
56.0				9.0	7.2
57.5				8.8	7.1
59.0				8.7	7.1
60.5				8.5	7.0
62.0				8.4	6.9
63.5				8.2	6.9
65.0				8.0	6.8
66.5					6.7
68.0					6.6
69.5					6.6
71.0					6.5
72.5					
Reeving	5	5	5	5	5

Capacities in metric tons with luffing jib (NDL) Jib length between 20 m and 62 m 75.3 t counterweight + 27 t carbody counterweight					
Jib (NDL)	20m	32m	44m	56m	62m
Radius in (m)	t	t	t	t	t
20.0					
21.5	35.1				
23.0	34.4				
24.5	32.3				
26.0	30.4	26.7			
27.5	28.6	26.7			
29.0	26.9	25.5			
30.5	25.6	24.2	19.1		
32.0	24.3	22.9	19.1		
33.5		22.0	19.0		
35.0		21.0	18.7	10.2	
36.5		20.1	18.2	10.2	
38.0		19.2	17.7	10.2	7.7
39.5		18.5	17.1	10.2	7.7
41.0		17.7	16.4	10.1	7.7
42.5		17.0	15.8	10.0	7.7
44.0		16.3	15.2	9.9	7.6
45.5			14.5	9.7	7.6
47.0			13.9	9.6	7.5
48.5			13.3	9.4	7.5
50.0			12.7	9.3	7.4
51.5			12.2	9.1	7.3
53.0			11.6	8.9	7.3
54.5			11.0	8.8	7.2
56.0				8.6	7.1
57.5				8.4	7.0
59.0				8.3	7.0
60.5				8.1	6.9
62.0				7.9	6.8
63.5				7.7	6.7
65.0				7.5	6.6
66.5				7.3	6.5
68.0					6.4
69.5					6.3
71.0					6.2
72.5					6.1
Reeving	5	5	5	5	5

Above lift chart is for reference only. For actual lift duty please refer to lift chart in operator's cab or manual.

Lifting capacities - luffing jib with derrick main boom 75°

Main boom (HPT)**49.1 m****Main boom (HPT)****55.1 m**

Capacities in metric tons with luffing jib (NDL) Jib length between 20 m and 62 m 75.3 t counterweight + 27 t carbody counterweight					
Jib (NDL)	20m	32m	44m	56m	62m
Radius in (m)	t	t	t	t	t
23.0	31.5				
24.5	30.9				
26.0	29.0				
27.5	27.3	24.1			
29.0	25.9	24.1			
30.5	24.4	23.1			
32.0	23.3	22.0	17.9		
33.5	22.3	20.9	17.9		
35.0		20.0	17.8		
36.5		19.1	17.3	9.7	
38.0		18.3	16.7	9.7	
39.5		17.4	16.1	9.7	7.4
41.0		16.6	15.6	9.7	7.4
42.5		15.7	15.0	9.6	7.4
44.0		14.9	14.4	9.5	7.4
45.5		14.1	13.8	9.3	7.4
47.0			13.2	9.2	7.3
48.5			12.6	9.1	7.2
50.0			12.0	8.9	7.2
51.5			11.4	8.8	7.1
53.0			10.9	8.6	7.0
54.5			10.3	8.5	7.0
56.0			9.8	8.4	6.9
57.5				8.2	6.8
59.0				8.0	6.7
60.5				7.8	6.7
62.0				7.6	6.6
63.5				7.3	6.5
65.0				7.1	6.3
66.5				6.9	6.2
68.0				6.7	6.1
69.5					6.0
71.0					5.9
72.5					5.8
74.0					5.6
Reeving	5	5	5	5	5

Capacities in metric tons with luffing jib (NDL) Jib length between 20 m and 62 m 75.3 t counterweight + 27 t carbody counterweight					
Jib (NDL)	20m	32m	44m	56m	62m
Radius in (m)	t	t	t	t	t
24.5	27.7				
26.0	27.3				
27.5	25.7				
29.0	24.4	21.5			
30.5	23.2	21.5			
32.0	22.0	20.8			
33.5	21.1	19.8	16.2		
35.0	20.1	18.8	16.2		
36.5		18.0	16.1		
38.0		17.3	15.7	9.3	
39.5		16.5	15.1	9.3	
41.0		15.8	14.5	9.3	7.2
42.5		14.9	13.9	9.3	7.2
44.0		14.1	13.4	9.3	7.2
45.5		13.3	12.8	9.1	7.2
47.0		12.4	12.3	9.0	7.1
48.5			11.8	8.9	7.0
50.0			11.2	8.8	7.0
51.5			10.7	8.6	6.9
53.0			10.2	8.4	6.9
54.5			9.7	8.3	6.8
56.0			9.2	8.1	6.7
57.5			8.7	8.0	6.6
59.0				7.8	6.6
60.5				7.6	6.5
62.0				7.4	6.4
63.5				7.1	6.3
65.0				6.9	6.2
66.5				6.6	6.0
68.0				6.4	5.9
69.5				6.2	5.7
71.0					5.5
72.5					5.4
74.0					5.2
75.5					5.1
Reeving	5	5	5	5	5

Above lift chart is for reference only. For actual lift duty please refer to lift chart in operator's cab or manual.

Lifting capacities - luffing jib with derrick main boom 75°

Main boom (HPT)

60.8 m

Main boom (HPT)

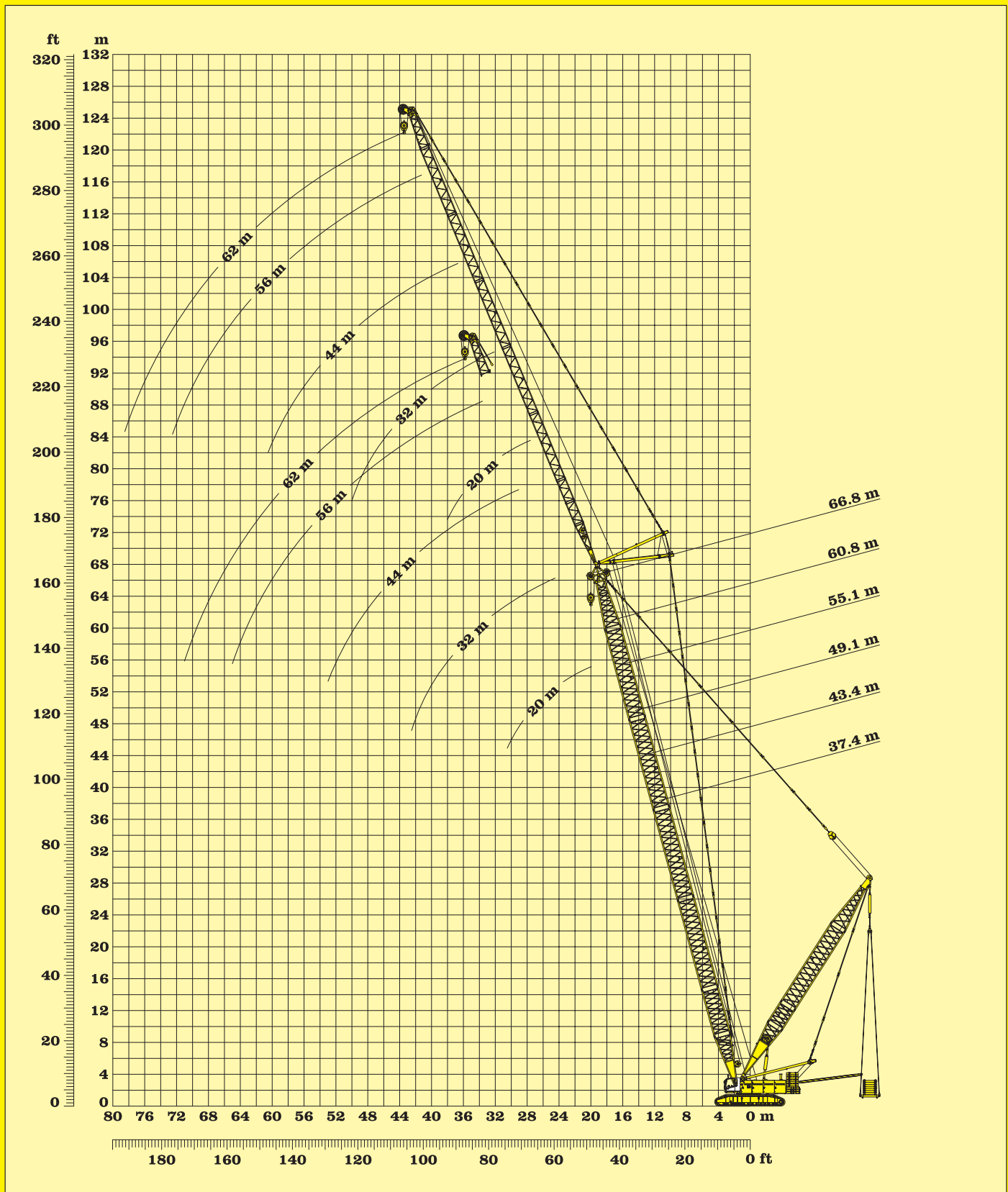
66.8 m

Capacities in metric tons with luffing jib (NDL) Jib length between 20 m and 62 m 75.3 t counterweight + 27 t carbody counterweight					
Jib (NDL)	20m	32m	44m	56m	62m
Radius in (m)	t	t	t	t	t
26.0	25.0				
27.5	24.5				
29.0	23.2				
30.5	22.0	19.4			
32.0	21.0	19.4			
33.5	20.0	48.6			
35.0	19.1	17.8	14.4		
36.5	18.2	17.0	14.4		
38.0		16.3	14.4		
39.5		15.6	14.1	8.8	
41.0		14.9	13.5	8.8	
42.5		14.2	12.9	8.8	6.8
44.0		13.4	12.4	8.7	6.8
45.5		12.6	11.9	8.7	6.8
47.0		11.8	11.4	8.6	6.8
48.5		10.9	11.0	8.5	6.7
50.0			10.5	8.4	6.7
51.5			10.0	8.2	6.6
53.0			9.6	8.0	6.6
54.5			9.2	7.8	6.5
56.0			8.7	7.6	6.4
57.5			8.3	7.4	6.3
59.0			7.9	7.2	6.2
60.5				7.0	6.1
62.0				6.8	5.9
63.5				6.6	5.8
65.0				6.4	5.7
66.5				6.2	5.6
68.0				5.9	5.4
69.5				5.7	5.2
71.0				5.5	5.0
72.5					4.9
74.0					4.7
75.5					4.5
77.0					4.3
Reeving	5	5	5	5	5

Capacities in metric tons with luffing jib (NDL) Jib length between 20 m and 62 m 75.3 t counterweight + 27 t carbody counterweight					
Jib (NDL)	20m	32m	44m	56m	62m
Radius in (m)	t	t	t	t	t
27.5	22.0				
29.0	21.6				
30.5	20.7				
32.0	19.7	17.1			
33.5	18.8	17.1			
35.0	17.9	16.5			
36.5	17.1	15.8	13.1		
38.0	16.4	15.1	13.1		
39.5		14.4	13.0		
41.0		13.8	12.4	8.3	
42.5		13.1	11.8	8.3	
44.0		12.5	11.2	8.3	6.5
45.5		11.8	10.6	8.3	6.5
47.0		11.2	10.2	8.3	6.5
48.5		10.5	9.8	8.2	6.5
50.0		9.9	9.4	8.1	6.4
51.5			9.0	8.0	6.4
53.0			8.6	7.8	6.3
54.5			8.3	7.5	6.3
56.0			8.0	7.2	6.2
57.5			7.7	6.9	6.0
59.0			7.4	6.6	5.8
60.5			7.1	6.3	5.6
62.0				6.0	5.4
63.5				5.8	5.2
65.0				5.6	5.0
66.5				5.5	4.8
68.0				5.3	4.7
69.5				5.1	4.5
71.0				4.9	4.4
72.5				4.7	4.2
74.0					4.0
75.5					3.9
77.0					3.7
78.5					3.5
Reeving	5	5	5	5	5

Above lift chart is for reference only. For actual lift duty please refer to lift chart in operator's cab or manual.

Lifting capacities - luffing jib with derrick main boom 75°



Working range - luffing jib with derrick and suspended counterweight - main boom 75°

Main boom (HPT)**37.4 m****Main boom (HPT)****43.4 m**

Capacities in metric tons with luffing jib (NDL) Jib length between 20 m and 62 m 75.3 t counterweight + 27 t carbody counterweight and max. 45.0 t suspended counterweight					
Jib (NDL)	20m	32m	44m	56m	62m
Radius in (m)	t	t	t	t	t
20.0	55.7				
21.5	55.5				
23.0	55.1				
24.5	53.9	33.1			
26.0	52.2	33.0			
27.5	50.0	32.4			
29.0	44.3	31.6	19.8		
30.5	38.6	30.7	19.8		
32.0		29.8	19.6		
33.5		29.0	19.3	10.6	
35.0		28.2	19.0	10.6	
36.5		27.3	18.6	10.5	8.0
38.0		26.0	18.2	10.4	8.0
39.5		24.7	17.7	10.3	8.0
41.0		23.4	17.2	10.2	7.9
42.5		22.1	16.7	10.1	7.8
44.0			16.2	10.0	7.8
45.5			15.6	9.9	7.7
47.0			15.0	9.7	7.6
48.5			14.4	9.6	7.6
50.0			13.8	9.5	7.5
51.5			13.1	9.4	7.4
53.0			12.5	9.2	7.4
54.5				9.1	7.3
56.0				8.9	7.2
57.5				8.8	7.1
59.0				8.6	7.1
60.5				8.5	7.0
62.0				8.3	6.9
63.5				8.2	6.8
65.0				8.0	6.7
66.5					6.7
68.0					6.6
69.5					6.5
71.0					6.4
72.5					
Reeving	5	5	5	5	5

Capacities in metric tons with luffing jib (NDL) Jib length between 20 m and 62 m 75.3 t counterweight + 27 t carbody counterweight and max. 45.0 t suspended counterweight					
Jib (NDL)	20m	32m	44m	56m	62m
Radius in (m)	t	t	t	t	t
20.0					
21.5	53.0				
23.0	52.9				
24.5	52.6				
26.0	51.5	31.6			
27.5	50.0	31.6			
29.0	48.2	31.2			
30.5	43.4	30.6	19.2		
32.0	38.6	29.9	19.2		
33.5		29.1	19.1		
35.0		28.3	18.8	10.2	
36.5		27.5	18.5	10.2	
38.0		26.6	18.2	10.2	7.7
39.5		25.5	17.7	10.1	7.7
41.0		24.4	17.0	10.0	7.7
42.5		23.3	16.3	9.9	7.7
44.0		22.2	15.6	9.8	7.6
45.5			14.9	9.7	7.6
47.0			14.2	9.6	7.5
48.5			13.6	9.4	7.4
50.0			12.9	9.3	7.4
51.5			12.3	9.1	7.3
53.0			11.7	9.0	7.2
54.5			11.0	8.8	7.1
56.0				8.7	7.1
57.5				8.5	7.0
59.0				8.3	6.9
60.5				8.1	6.8
62.0				7.9	6.7
63.5				7.7	6.6
65.0				7.5	6.6
66.5				7.3	6.5
68.0					6.4
69.5					6.3
71.0					6.2
72.5					6.1
Reeving	5	5	5	5	5

The weight of the suspended counterweight may vary and needs to be adapted to the actual lift.
Above lift chart is for reference only. For actual lift duty please refer to lift chart in operator's cab or manual.

Lifting capacities - luffing jib with derrick and suspended counterweight - main boom 75°

Main boom (HPT)

49.1 m

Main boom (HPT)

55.1 m

Capacities in metric tons with luffing jib (NDL) Jib length between 20 m and 62 m 75.3 t counterweight + 27 t carbody counterweight and max. 45.0 t suspended counterweight					
Jib (NDL)	20m	32m	44m	56m	62m
Radius in (m)	t	t	t	t	t
23.0	48.8				
24.5	48.6				
26.0	48.5				
27.5	47.6	29.6			
29.0	46.0	29.6			
30.5	44.3	29.5			
32.0	40.7	29.1	18.0		
33.5	37.1	28.6	18.0		
35.0		28.0	17.8		
36.5		27.4	17.3	9.8	
38.0		26.7	16.7	9.8	
39.5		26.0	16.2	9.7	7.4
41.0		23.2	15.6	9.7	7.4
42.5		20.3	15.1	9.6	7.4
44.0		17.4	14.5	9.5	7.4
45.5		14.5	14.0	9.4	7.4
47.0			13.4	9.3	7.3
48.5			12.9	9.1	7.3
50.0			12.3	8.9	7.2
51.5			11.6	8.8	7.1
53.0			11.0	8.6	7.1
54.5			10.4	8.4	7.0
56.0			9.8	8.2	6.9
57.5				8.1	6.8
59.0				7.9	6.7
60.5				7.6	6.6
62.0				7.4	6.5
63.5				7.2	6.4
65.0				7.0	6.3
66.5				6.8	6.2
68.0				6.6	6.1
69.5					6.0
71.0					5.8
72.5					5.7
74.0					5.6
Reeving	5	5	5	5	5

Capacities in metric tons with luffing jib (NDL) Jib length between 20 m and 62 m 75.3 t counterweight + 27 t carbody counterweight and max. 45.0 t suspended counterweight					
Jib (NDL)	20m	32m	44m	56m	62m
Radius in (m)	t	t	t	t	t
24.5	45.7				
26.0	45.6				
27.5	45.6				
29.0	44.7	28.1			
30.5	42.8	28.0			
32.0	40.9	28.0			
33.5	38.3	27.7	16.3		
35.0	35.6	27.4	16.3		
36.5		26.9	16.1		
38.0		26.4	15.7	9.4	
39.5		25.9	15.3	9.4	
41.0		25.2	14.8	9.4	7.2
42.5		22.3	14.4	9.3	7.2
44.0		19.2	13.9	9.2	7.2
45.5		16.1	13.4	9.1	7.1
47.0		13.0	12.9	9.0	7.1
48.5			12.4	8.9	7.0
50.0			11.9	8.7	7.0
51.5			11.3	8.6	6.9
53.0			10.7	8.4	6.9
54.5			10.1	8.2	6.8
56.0			9.5	8.0	6.7
57.5			8.8	7.8	6.6
59.0				7.7	6.5
60.5				7.4	6.5
62.0				7.2	6.4
63.5				7.0	6.3
65.0				6.8	6.2
66.5				6.5	6.0
68.0				6.3	5.9
69.5				6.1	5.7
71.0					5.6
72.5					5.5
74.0					5.3
75.5					5.2
Reeving	5	5	5	5	5

The weight of the suspended counterweight may vary and needs to be adapted to the actual lift.
Above lift chart is for reference only. For actual lift duty please refer to lift chart in operator's cab or manual.

Lifting capacities - luffing jib with derrick and suspended counterweight - main boom 75°

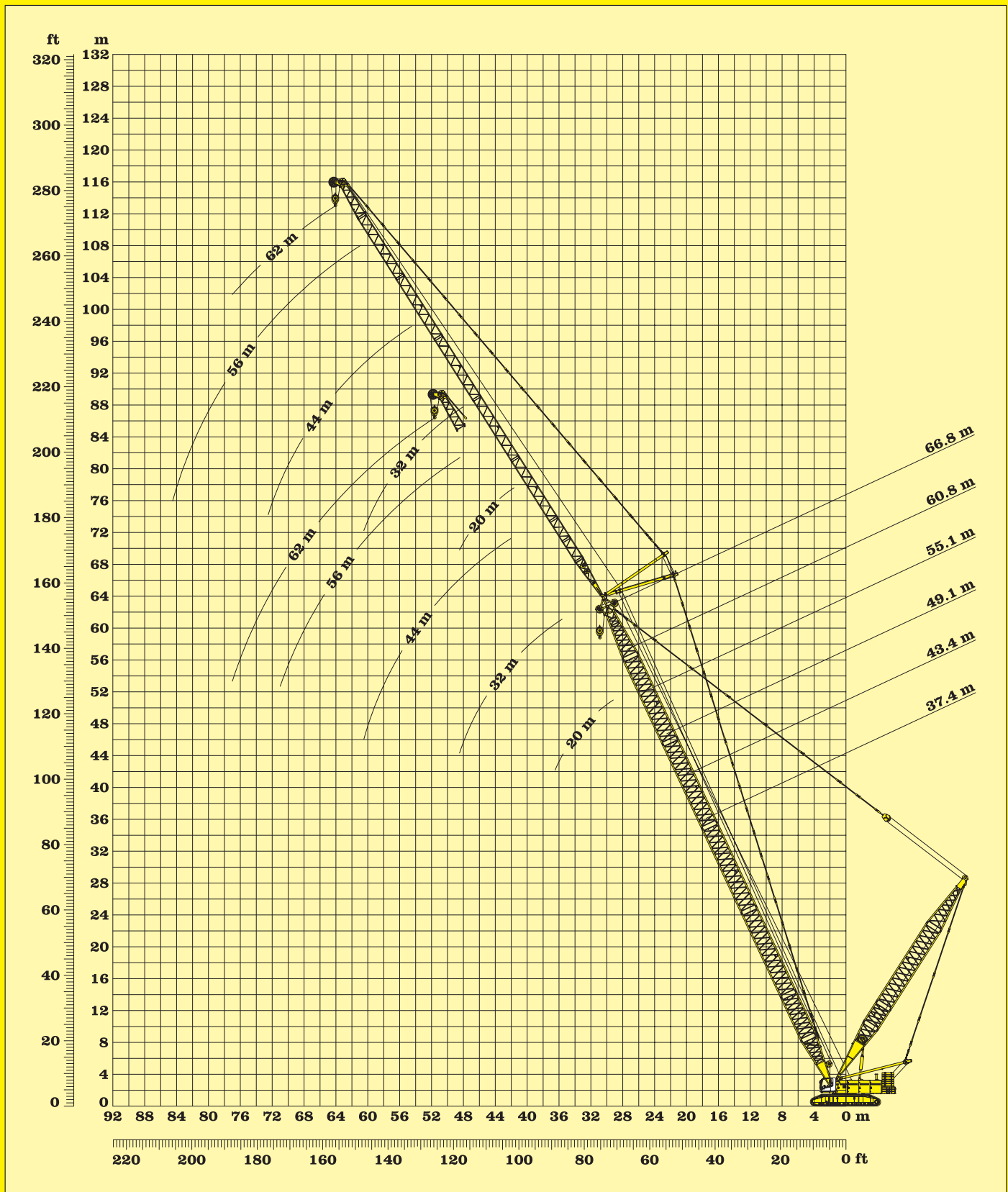
Main boom (HPT)**60.8 m****Main boom (HPT)****66.8 m**

Capacities in metric tons with luffing jib (NDL) Jib length between 20 m and 62 m 75.3 t counterweight + 27 t carbody counterweight and max. 45.0 t suspended counterweight					
Jib (NDL)	20m	32m	44m	56m	62m
Radius in (m)	t	t	t	t	t
26.0	41.5				
27.5	41.5				
29.0	41.4				
30.5	40.5	26.0			
32.0	39.0	26.0			
33.5	37.5	26.0			
35.0	35.5	25.9	14.5		
36.5	33.4	25.8	14.5		
38.0		25.2	14.4		
39.5		24.5	14.1	8.8	
41.0		23.8	13.8	8.8	
42.5		23.0	13.5	8.8	6.8
44.0		20.2	13.2	8.8	6.8
45.5		17.3	12.7	8.7	6.8
47.0		14.4	12.2	8.6	6.8
48.5		11.5	11.7	8.5	6.7
50.0			11.3	8.4	6.7
51.5			10.8	8.2	6.6
53.0			10.2	8.1	6.6
54.5			9.7	7.9	6.5
56.0			9.1	7.7	6.4
57.5			8.5	7.6	6.3
59.0			8.0	7.4	6.2
60.5				7.2	6.2
62.0				7.0	6.1
63.5				6.7	6.0
65.0				6.5	5.9
66.5				6.3	5.7
68.0				6.0	5.6
69.5				5.8	5.5
71.0				5.6	5.3
72.5					5.2
74.0					5.1
75.5					4.9
77.0					4.8
Reeving	5	5	5	5	5

Capacities in metric tons with luffing jib (NDL) Jib length between 20 m and 62 m 75.3 t counterweight + 27 t carbody counterweight and max. 45.0 t suspended counterweight					
Jib (NDL)	20m	32m	44m	56m	62m
Radius in (m)	t	t	t	t	t
27.5	37.7				
29.0	37.5				
30.5	36.3				
32.0	35.1	24.2			
33.5	33.8	24.2			
35.0	32.5	24.2			
36.5	30.7	24.2	13.5		
38.0	28.8	24.2	13.5		
39.5		22.2	13.4		
41.0		20.1	13.2	8.4	
42.5		17.9	12.9	8.4	
44.0		15.8	12.6	8.4	6.5
45.5		14.3	12.2	8.4	6.5
47.0		12.9	11.8	8.3	6.5
48.5		11.5	11.4	8.2	6.5
50.0		10.1	10.9	8.1	6.4
51.5			10.5	7.9	6.4
53.0			10.0	7.8	6.4
54.5			9.5	7.6	6.3
56.0			8.9	7.5	6.3
57.5			8.4	7.3	6.2
59.0			7.8	7.1	6.1
60.5			7.3	6.9	6.0
62.0				6.8	5.9
63.5				6.6	5.8
65.0				6.3	5.7
66.5				6.1	5.6
68.0				5.9	5.5
69.5				5.6	5.3
71.0				5.4	5.2
72.5				5.2	5.0
74.0					4.9
75.5					4.7
77.0					4.6
78.5					4.4
Reeving	5	5	5	5	5

The weight of the suspended counterweight may vary and needs to be adapted to the actual lift.
Above lift chart is for reference only. For actual lift duty please refer to lift chart in operator's cab or manual.

Lifting capacities - luffing jib with derrick and suspended counterweight - main boom 75°



Working range - luffing jib with derrick main boom 65°

Main boom (HPT)

37.4 m

Main boom (HPT)

43.4 m

Capacities in metric tons with luffing jib (NDL) Jib length between 20 m and 62 m 75.3 t counterweight + 27 t carbody counterweight					
Jib (NDL)	20m	32m	44m	56m	62m
Radius in (m)	t	t	t	t	t
30.5	26.2				
32.0	25.0				
33.5	23.6				
35.0	22.4				
36.5	21.2	19.8			
38.0		19.4			
39.5		18.6			
41.0		17.8			
42.5		17.0	14.8		
44.0		16.3	14.8		
45.5		15.6	14.4		
47.0		14.9	13.8		
48.5		14.3	13.2	9.8	
50.0			12.7	9.8	
51.5			12.2	9.8	7.2
53.0			11.6	9.7	7.2
54.5			11.1	9.7	7.2
56.0			10.8	9.6	7.2
57.5			10.4	9.4	7.2
59.0			10.0	9.1	7.2
60.5			9.7	8.7	7.2
62.0				8.4	7.1
63.5				8.1	7.0
65.0				7.8	7.0
66.5				7.6	6.9
68.0				7.4	6.8
69.5				7.1	6.7
71.0				6.9	6.5
72.5					6.3
74.0					6.1
75.5					5.9
77.0					5.6
78.5					
Reeving	5	5	5	5	5

Capacities in metric tons with luffing jib (NDL) Jib length between 20 m and 62 m 75.3 t counterweight + 27 t carbody counterweight					
Jib (NDL)	20m	32m	44m	56m	62m
Radius in (m)	t	t	t	t	t
32.0	22.7				
33.5	22.1				
35.0	21.1				
36.5	20.2				
38.0	19.2				
39.5	18.2	17.3			
41.0		16.7			
42.5		16.1			
44.0		15.4			
45.5		14.7	12.9		
47.0		14.1	12.9		
48.5		13.5	12.4		
50.0		13.0	11.8		
51.5		12.5	11.3	9.5	
53.0			10.9	9.5	
54.5			10.5	9.4	7.2
56.0			10.1	9.2	7.2
57.5			9.7	8.8	7.2
59.0			9.4	8.5	7.2
60.5			9.1	8.2	7.1
62.0			8.7	7.9	7.1
63.5				7.6	7.0
65.0				7.3	6.8
66.5				7.0	6.6
68.0				6.8	6.3
69.5				6.6	6.1
71.0				6.4	5.8
72.5				6.2	5.6
74.0				6.0	5.5
75.5					5.3
77.0					5.1
78.5					4.9
80.0					4.8
Reeving	5	5	5	5	5

Above lift chart is for reference only. For actual lift duty please refer to lift chart in operator's cab or manual.

Lifting capacities - luffing jib with derrick main boom 65°

Main boom (HPT)**49.1 m****Main boom (HPT)****55.1 m**

Capacities in metric tons with luffing jib (NDL) Jib length between 20 m and 62 m 75.3 t counterweight + 27 t carbody counterweight					
Jib (NDL)	20m	32m	44m	56m	62m
Radius in (m)	t	t	t	t	t
35.0	19.7				
36.5	18.8				
38.0	18.0				
39.5	17.3				
41.0	16.5	15.1			
42.5		14.5			
44.0		13.9			
45.5		13.4			
47.0		12.9	11.0		
48.5		12.5	11.0		
50.0		12.0	10.6		
51.5		11.6	10.3		
53.0		11.2	9.9		
54.5			9.5	8.2	
56.0			9.2	8.0	
57.5			8.9	7.7	7.0
59.0			8.6	7.4	6.7
60.5			8.3	7.1	6.5
62.0			8.0	6.9	6.2
63.5			7.8	6.6	6.0
65.0			7.5	6.4	5.8
66.5				6.2	5.5
68.0				5.9	5.3
69.5				5.7	5.1
71.0				5.5	4.9
72.5				5.3	4.7
74.0				5.2	4.5
75.5				5.0	4.4
77.0				4.8	4.2
78.5					4.0
80.0					3.9
81.5					3.7
83.0					3.6
Reeving	5	5	5	5	5

Capacities in metric tons with luffing jib (NDL) Jib length between 20 m and 62 m 75.3 t counterweight + 27 t carbody counterweight					
Jib (NDL)	20m	32m	44m	56m	62m
Radius in (m)	t	t	t	t	t
38.0	16.1				
39.5	15.5				
41.0	14.8				
42.5	14.3				
44.0	13.7	12.3			
45.5		11.8			
47.0		11.4			
48.5		10.9			
50.0		10.6	9.2		
51.5		10.2	8.8		
53.0		9.8	8.5		
54.5		9.5	8.2		
56.0		9.2	7.9	6.6	
57.5			7.6	6.4	
59.0			7.3	6.2	5.3
60.5			7.1	5.9	5.2
62.0			6.8	5.7	5.0
63.5			6.6	5.5	4.8
65.0			6.4	5.2	4.6
66.5			6.1	5.0	4.4
68.0			5.9	4.8	4.2
69.5				4.6	4.0
71.0				4.5	3.8
72.5				4.3	3.7
74.0				4.1	3.5
75.5				4.0	3.3
77.0				3.8	3.2
78.5				3.7	3.0
80.0					2.9
81.5					2.8
83.0					2.6
84.5					2.5
86.0					
Reeving	5	5	5	5	5

Above lift chart is for reference only. For actual lift duty please refer to lift chart in operator's cab or manual.

Lifting capacities - luffing jib with derrick main boom 65°

Main boom (HPT)

60.8 m

Main boom (HPT)

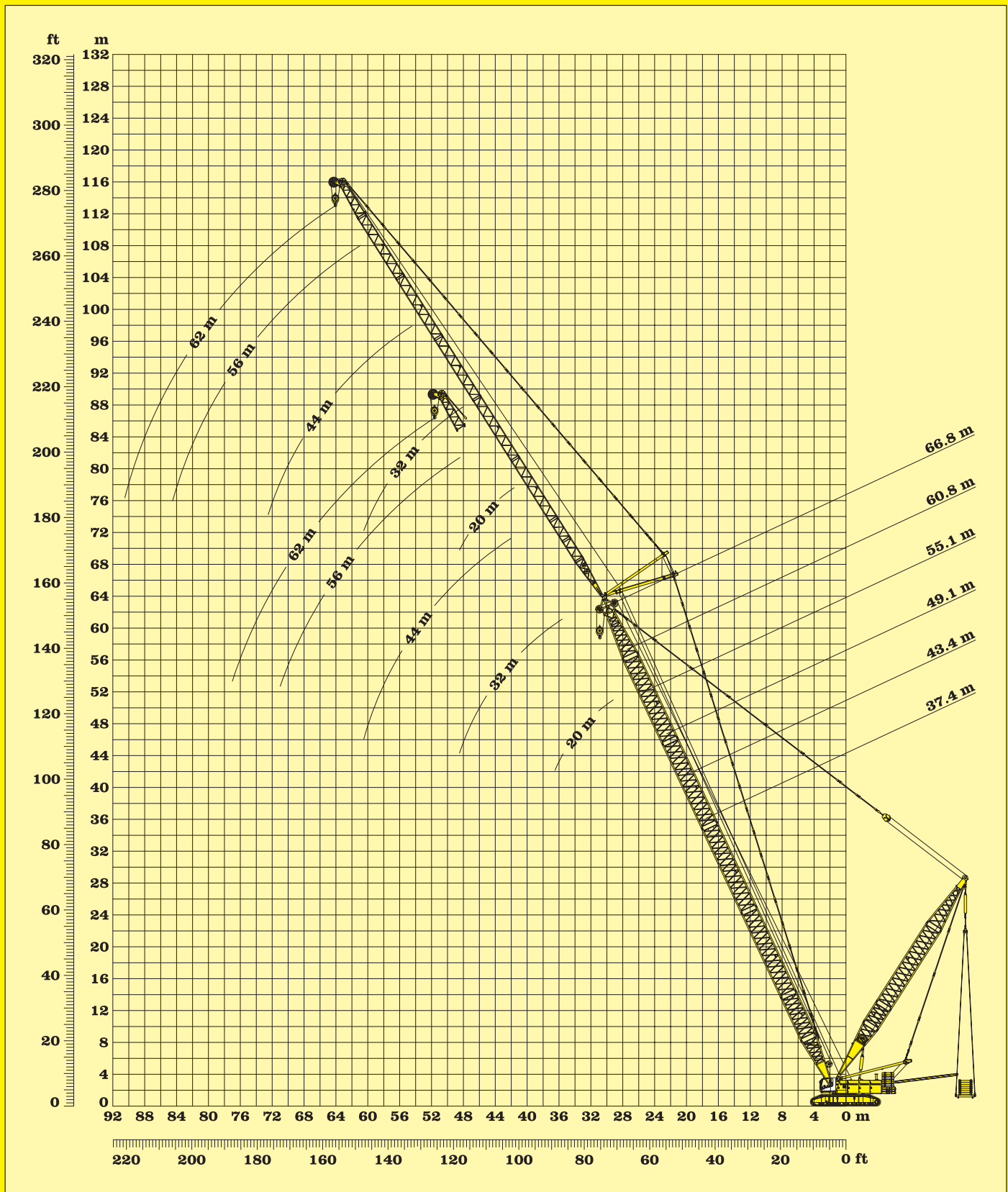
66.8 m

Capacities in metric tons with luffing jib (NDL) Jib length between 20 m and 62 m 75.3 t counterweight + 27 t carbody counterweight					
Jib (NDL)	20m	32m	44m	56m	62m
Radius in (m)	t	t	t	t	t
39.5	13.7				
41.0	13.2				
42.5	12.6				
44.0	12.2				
45.5	11.7	10.1			
47.0	11.3	9.9			
48.5		9.5			
50.0		9.1			
51.5		8.8			
53.0		8.5	7.1		
54.5		8.2	6.9		
56.0		7.9	6.6		
57.5		7.6	6.4		
59.0		7.4	6.1	4.9	
60.5			5.9	4.7	
62.0			5.7	4.5	3.8
63.5			5.4	4.3	3.6
65.0			5.2	4.1	3.5
66.5			5.1	3.9	3.3
68.0			4.9	3.8	3.1
69.5			4.7	3.6	3.0
71.0				3.4	2.8
72.5				3.3	2.7
74.0				3.1	2.5
75.5				3.0	2.4
77.0				2.8	2.2
78.5				2.7	2.1
80.0				2.6	2.0
81.5				2.4	1.9
83.0					1.7
84.5					1.6
86.0					1.5
87.5					1.4
Reeving	5	5	5	5	5

Capacities in metric tons with luffing jib (NDL) Jib length between 20 m and 62 m 75.3 t counterweight + 27 t carbody counterweight					
Jib (NDL)	20m	32m	44m	56m	62m
Radius in (m)	t	t	t	t	t
42.5	10.7				
44.0	10.3				
45.5	9.9				
47.0	9.5				
48.5	9.1	7.8			
50.0		7.5			
51.5		7.2			
53.0		6.9			
54.5		6.7	5.2		
56.0		6.4	5.1		
57.5		6.2	4.9		
59.0		5.9	4.7		
60.5		5.7	4.5		
62.0			4.3	3.1	
63.5			4.1	3.0	
65.0			3.9	2.8	2.1
66.5			3.8	2.6	2.0
68.0			3.6	2.5	1.8
69.5			3.4	2.4	1.7
71.0			3.3	2.2	1.6
72.5			3.1	2.1	1.4
74.0				2.0	1.3
75.5				1.8	1.2
77.0				1.7	1.1
78.5				1.6	
80.0				1.5	
81.5				1.4	
83.0				1.3	
84.5				1.1	
86.0					
87.5					
89.0					
90.5					
Reeving	5	5	5	5	5

Above lift chart is for reference only. For actual lift duty please refer to lift chart in operator's cab or manual.

Lifting capacities - luffing jib with derrick main boom 65°



Working range - luffing jib with derrick and suspended counterweight - main boom 65°

Main boom (HPT)**37.4 m****Main boom (HPT)****43.4 m**

Capacities in metric tons with luffing jib (NDL) Jib length between 20 m and 62 m 75.3 t counterweight + 27 t carbody counterweight and max. 75.0 t suspended counterweight					
Jib (NDL)	20m	32m	44m	56m	62m
Radius in (m)	t	t	t	t	t
30.5	51.9				
32.0	52.1				
33.5	50.1				
35.0	47.3				
36.5	42.1	28.5			
38.0		28.3			
39.5		27.9			
41.0		27.4			
42.5		26.8	17.1		
44.0		26.2	17.1		
45.5		25.5	17.0		
47.0		24.6	16.8		
48.5		23.7	16.6	9.8	
50.0			16.4	9.8	
51.5			16.3	9.8	7.2
53.0			16.2	9.7	7.2
54.5			15.9	9.7	7.2
56.0			15.3	9.7	7.2
57.5			14.7	9.6	7.2
59.0			14.1	9.5	7.2
60.5			13.5	9.5	7.2
62.0				9.4	7.2
63.5				9.4	7.1
65.0				9.3	7.1
66.5				9.2	7.1
68.0				9.2	7.1
69.5				9.1	7.1
71.0				9.0	7.1
72.5					7.1
74.0					7.1
75.5					7.1
77.0					7.1
78.5					
Reeving	5	5	5	5	5

Capacities in metric tons with luffing jib (NDL) Jib length between 20 m and 62 m 75.3 t counterweight + 27 t carbody counterweight and max. 75.0 t suspended counterweight						
Jib (NDL)	20m	32m	44m	56m	62m	
Radius in (m)	t	t	t	t	t	
32.0	49.0					
33.5	49.1					
35.0	48.3					
36.5	46.4					
38.0	43.8					
39.5	40.1	27.8				
41.0		27.6				
42.5		27.3				
44.0		26.8				
45.5		26.4	16.9			
47.0		25.9	16.8			
48.5		25.2	16.7			
50.0		24.5	16.6			
51.5		23.7	16.5	9.7		
53.0			16.4	9.7		
54.5			16.3	9.7	7.2	
56.0			16.2	9.7	7.2	
57.5			15.9	9.7	7.2	
59.0			15.2	9.6	7.2	
60.5			14.6	9.6	7.2	
62.0			13.9	9.5	7.2	
63.5				9.5	7.2	
65.0				9.4	7.2	
66.5				9.4	7.1	
68.0				9.2	7.1	
69.5				9.1	7.1	
71.0				9.0	7.1	
72.5					8.9	7.1
74.0					8.8	7.1
75.5						7.1
77.0						7.1
78.5						7.0
80.0						7.0
Reeving	5	5	5	5	5	

The weight of the suspended counterweight may vary and needs to be adapted to the actual lift.
Above lift chart is for reference only. For actual lift duty please refer to lift chart in operator's cab or manual.

Lifting capacities - luffing jib with derrick and suspended counterweight - main boom 65°

Main boom (HPT)**49.1 m****Main boom (HPT)****55.1 m**

Capacities in metric tons with luffing jib (NDL) Jib length between 20 m and 62 m 75.3 t counterweight + 27 t carbody counterweight and max. 75.0 t suspended counterweight					
Jib (NDL)	20m	32m	44m	56m	62m
Radius in (m)	t	t	t	t	t
35.0	45.6				
36.5	45.0				
38.0	43.4				
39.5	41.8				
41.0	40.3	26.5			
42.5		26.5			
44.0		26.3			
45.5		26.1			
47.0		25.8	16.3		
48.5		25.4	16.3		
50.0		25.0	16.3		
51.5		24.5	16.2		
53.0		23.9	16.1		
54.5			16.0	9.4	
56.0			15.9	9.4	
57.5			15.7	9.4	7.0
59.0			15.6	9.4	7.0
60.5			14.9	9.4	7.0
62.0			14.1	9.4	7.0
63.5			13.3	9.3	7.0
65.0			12.5	9.3	7.0
66.5				9.2	7.0
68.0				9.1	7.0
69.5				9.0	7.0
71.0				8.9	7.0
72.5				8.7	7.0
74.0				8.5	7.0
75.5				8.4	6.9
77.0				8.2	6.9
78.5					6.8
80.0					6.8
81.5					6.7
83.0					6.7
Reeving	5	5	5	5	5

Capacities in metric tons with luffing jib (NDL) Jib length between 20 m and 62 m 75.3 t counterweight + 27 t carbody counterweight and max. 75.0 t suspended counterweight					
Jib (NDL)	20m	32m	44m	56m	62m
Radius in (m)	t	t	t	t	t
38.0	41.7				
39.5	40.2				
41.0	38.9				
42.5	37.6				
44.0	36.5	25.3			
45.5		25.2			
47.0		25.2			
48.5		25.0			
50.0		24.8	15.3		
51.5		24.5	15.3		
53.0		24.2	15.2		
54.5		23.9	15.2		
56.0		23.5	15.2	8.7	
57.5			14.9	8.7	
59.0			14.6	8.8	6.5
60.5			14.3	8.8	6.5
62.0			13.9	8.8	6.5
63.5			13.1	8.7	6.5
65.0			12.3	8.7	6.5
66.5			11.5	8.7	6.5
68.0			10.7	8.6	6.6
69.5				8.5	6.6
71.0				8.5	6.6
72.5				8.4	6.5
74.0				8.2	6.5
75.5				8.0	6.5
77.0				7.8	6.5
78.5				7.6	6.5
80.0					6.4
81.5					6.4
83.0					6.3
84.5					6.3
86.0					
Reeving	5	5	5	5	5

The weight of the suspended counterweight may vary and needs to be adapted to the actual lift.
Above lift chart is for reference only. For actual lift duty please refer to lift chart in operator's cab or manual.

Lifting capacities - luffing jib with derrick and suspended counterweight - main boom 65°

Main boom (HPT)**60.8 m****Main boom (HPT)****66.8 m**

Capacities in metric tons with luffing jib (NDL) Jib length between 20 m and 62 m 75.3 t counterweight + 27 t carbody counterweight and max. 75.0 t suspended counterweight					
Jib (NDL)	20m	32m	44m	56m	62m
Radius in (m)	t	t	t	t	t
39.5	37.0				
41.0	36.4				
42.5	35.4				
44.0	34.3				
45.5	33.4	23.8			
47.0	32.4	23.8			
48.5		23.7			
50.0		23.7			
51.5		23.6			
53.0		23.4	14.1		
54.5		23.2	14.1		
56.0		20.5	14.0		
57.5		17.7	13.9		
59.0		14.9	13.7	8.3	
60.5			13.5	8.3	
62.0			13.2	8.3	6.2
63.5			12.9	8.3	6.2
65.0			12.4	8.3	6.2
66.5			11.7	8.3	6.2
68.0			11.0	8.2	6.3
69.5			10.3	8.1	6.3
71.0				8.0	6.3
72.5				7.9	6.3
74.0				7.8	6.3
75.5				7.6	6.3
77.0				7.4	6.3
78.5				7.3	6.3
80.0				7.1	6.2
81.5				7.0	6.1
83.0					6.1
84.5					6.0
86.0					5.9
87.5					5.9
Reeving	5	5	5	5	5

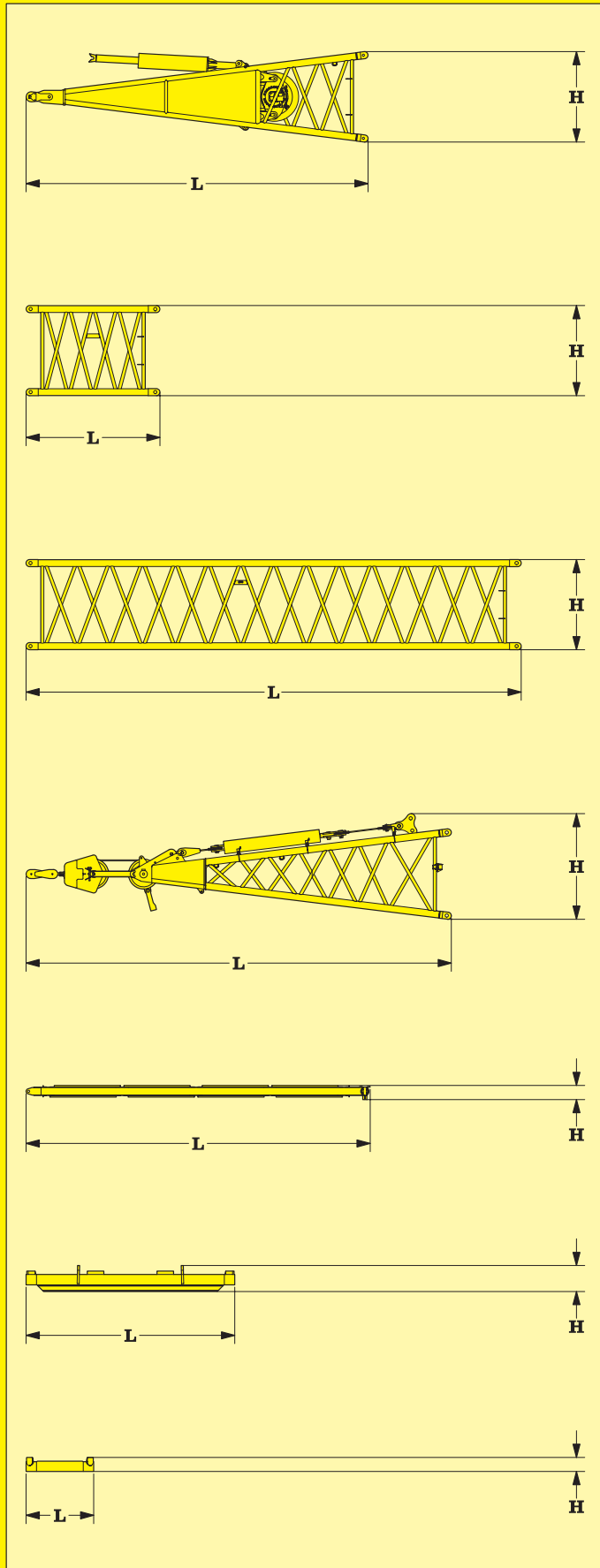
Capacities in metric tons with luffing jib (NDL) Jib length between 20 m and 62 m 75.3 t counterweight + 27 t carbody counterweight and max. 75.0 t suspended counterweight					
Jib (NDL)	20m	32m	44m	56m	62m
Radius in (m)	t	t	t	t	t
42.5	32.0				
44.0	31.2				
45.5	30.3				
47.0	29.5				
48.5	28.8	21.4			
50.0		21.5			
51.5		21.7			
53.0		21.7			
54.5		21.7	13.1		
56.0		21.6	13.1		
57.5		20.7	13.1		
59.0		17.9	12.9		
60.5		15.1	12.7		
62.0			12.5	7.9	
63.5			12.2	7.9	
65.0			12.0	7.9	5.9
66.5			11.7	7.9	5.9
68.0			11.1	7.9	6.0
69.5			10.4	7.9	6.0
71.0			9.7	7.8	6.0
72.5			9.0	7.7	6.0
74.0				7.6	6.0
75.5				7.5	6.0
77.0				7.4	6.0
78.5				7.2	6.0
80.0				7.0	6.0
81.5				6.8	6.0
83.0				6.7	5.9
84.5				6.5	5.8
86.0					5.7
87.5					5.7
89.0					5.6
90.5					5.5
Reeving	5	5	5	5	5

The weight of the suspended counterweight may vary and needs to be adapted to the actual lift.

Above lift chart is for reference only. For actual lift duty please refer to lift chart in operator's cab or manual.

Lifting capacities - luffing jib with derrick and suspended counterweight - main boom 65°

Transport dimensions and weights



*) Including pendants

Derrick foot

Width	mm	2420
Weight	kg	6100
L Length	mm	8230
H Height	mm	2200

Tubular boom section (HPT) 3 m

Width	mm	2420
Weight*	kg	1125
L Length	mm	3250
H Height	mm	2340

Tubular boom section (HPT) 11.7 m

Width	mm	2420
Weight*	kg	2850
L Length	mm	11950
H Height	mm	2340

Derrick head

Width	mm	2420
Weight*	kg	5260
L Length	mm	10250
H Height	mm	2550

Distance frame

Width	mm	1800
Weight	kg	540
L Length	mm	8300
H Height	mm	340

Counterweight frame

Width	mm	2400
Weight	kg	13700
L Length	mm	5020
H Height	mm	630

Counterweight

		max. 21
Width	mm	1625
Weight	kg	5010
L Length	mm	1625
H Height	mm	340

LIEBHERR-WERK NENZING GMBH.

P.O. Box 10, A-6710 Nenzing / Austria / Europa

Telephone (+43) 5525 - 606 - 473

Telefax (+43) 5525 - 606 - 499

Email: crawler.crane@lwn.liebherr.com

www.liebherr.com

Presented by: