

EN



LHM 600

High rise version

www.liebherr.com

LIEBHERR

Mobile harbour crane

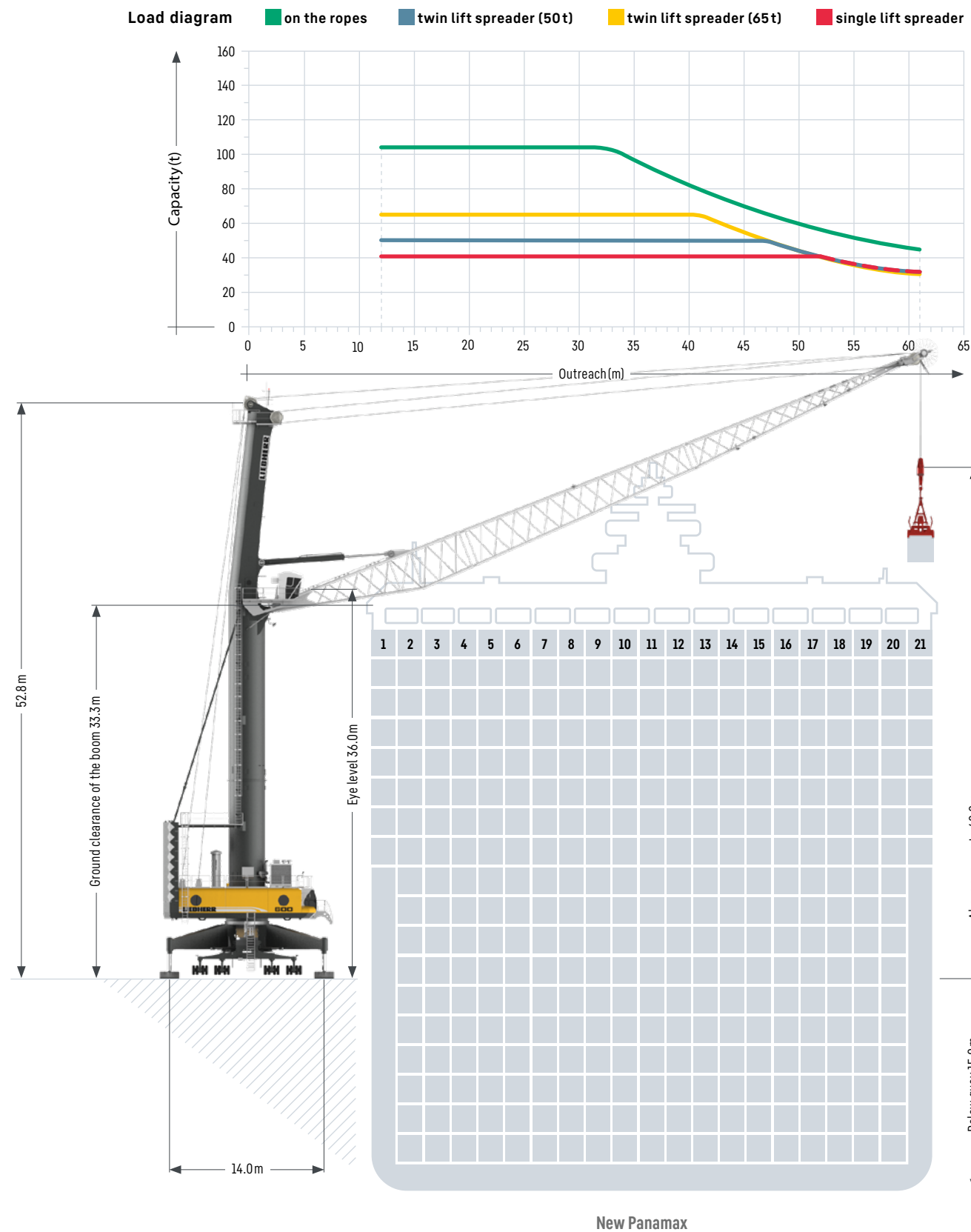
**Maximum
lifting capacity**
154 t

**Maximum
outreach**
61m

Ship size
New Panamax,
Ultra Large
Container Ship

Main dimensions

Container operation



Lifting Capacities

Container Operation

Maximum crane capacity 104t

Outreach (m)	Spreader operation under			Hook operation on the ropes
	Single lift (t)	Twin lift (50t) (t)	Twin lift (65t) (t)	Standard (t)
12	41.0	50.0	65.0	104.0
14	41.0	50.0	65.0	104.0
16	41.0	50.0	65.0	104.0
18	41.0	50.0	65.0	104.0
20	41.0	50.0	65.0	104.0
22	41.0	50.0	65.0	104.0
24	41.0	50.0	65.0	104.0
26	41.0	50.0	65.0	104.0
28	41.0	50.0	65.0	104.0
30	41.0	50.0	65.0	104.0
33	41.0	50.0	65.0	104.0
35	41.0	50.0	65.0	98.3
37	41.0	50.0	65.0	91.6
39	41.0	50.0	65.0	85.7
41	41.0	50.0	65.0	80.0
43	41.0	50.0	60.0	74.6
45	41.0	50.0	55.3	69.8
47	41.0	50.0	50.9	65.4
49	41.0	47.2	46.9	61.4
51	41.0	43.7	43.4	57.9
53	41.0	40.3	40.0	54.5
55	39.1	37.4	37.1	51.6
57	36.5	34.8	34.5	49.0
59	34.2	32.5	32.2	46.7
61	32.1	30.4	30.1	44.6

Weight rotator 3.5t; Weight fully automatic (telescopic) spreader 9.0t
 Weight (50t) twin lift spreader 10.7t; Weight (65t) twin lift spreader 11.0t

Maximum crane capacity 154t

Outreach (m)	Spreader operation under			Hook operation on the ropes
	Single lift (t)	Twin lift (50t) (t)	Twin lift (65t) (t)	Standard (t)
12	41.0	50.0	65.0	154.0
14	41.0	50.0	65.0	154.0
16	41.0	50.0	65.0	154.0
18	41.0	50.0	65.0	154.0
20	41.0	50.0	65.0	154.0
22	41.0	50.0	65.0	154.0
24	41.0	50.0	65.0	153.2
25	41.0	50.0	65.0	146.7
28	41.0	50.0	65.0	130.4
30	41.0	50.0	65.0	120.0
33	41.0	50.0	65.0	106.1
35	41.0	50.0	65.0	98.3
37	41.0	50.0	65.0	91.6
39	41.0	50.0	65.0	85.7
41	41.0	50.0	65.0	80.0
43	41.0	50.0	59.6	74.6
45	41.0	50.0	54.8	69.8
47	41.0	50.0	50.4	65.4
49	41.0	46.7	46.4	61.4
51	41.0	43.2	42.9	57.9
53	41.0	39.8	39.5	54.5
55	38.6	36.9	36.6	51.6
57	36.0	34.3	34.0	49.0
59	33.7	32.0	31.7	46.7
61	31.6	29.9	29.6	44.6

Weight rotator 4.0t; Weight fully automatic (telescopic) spreader 9.0t
 Weight (50t) twin lift spreader 10.7t; Weight (65t) twin lift spreader 11.0t

Standard configuration – Turnover up to 32 cycles per hour

Pactronic® – Turnover up to 38 cycles per hour

Precision to perfection: With incredibly short acceleration times for all crane motions, Liebherr is the top performer in container handling.

Technical data

Container operation

Capacity and Classification

	Capacity	Classification
Container operation	≤ 63t	A7
Standard operation	≤ 104t	A4

Main Dimensions

Min. to max. outreach	13 – 61m
Height of boom fulcrum	33.0m
Tower cabin height (eye level)	36.0m
Overall height (top of tower)	52.8m
Overall length of undercarriage	21.6m
Overall width of undercarriage	10.3m
Number of axle sets (standard)	28
Number of axle sets (optional)	32

Working Speeds

Hoisting / lowering	0 – 120m/min
Slewing	0 – 1.6rpm
Luffing (average horizontal speed)	0 – 61m/min
Travelling	0 – 5.0km/h

Propping Arrangements

Standard supporting base	14.0m x 14.0m
Standard pad dimension	5.5m x 1.8m
Standard supporting area of pads	9.9m ²

Optional size of supporting pads and bases on request

Quay Load Arrangements

Uniformly distributed load	3.2t/m ²
Max. load per tyre	5.5t

Due to a unique undercarriage design the quay loads specified above can even be reduced. Pad sizes, supporting base and the number of axle sets can easily be adapted to comply with the most stringent quay load restrictions.

Weight

Total weight of crane in container version (104t winch, 61m boom, Pactronic®)	approx. 618t
---	--------------

Hoisting Heights

Above quay at minimum radius	48.0m
Above quay at maximum radius	48.0m
Below quay level (approx.)	15.0m

Optional equipment

Additional products and services

- Pactronic® – power by accumulator and electronics
- SmartGrip – intelligent grabbing
- Cycoptronic® – anti-sway system
- Teach-In – semi-automatic point to point system
- Sycratronic® – synchronizing crane control system
- Vertical Line Finder – diagonal pull preventing system
- Collision alert system
- LiDAT® – smartApp
- Economy software – for optimised fuel consumption
- Video monitoring system
- Radio remote control

- Autopropping undercarriage
- Cyclone air-intake system for the engine
- Low temperature package
- Customer-specific painting & logo
- Additional (driven) axle sets
- Axle sets equipped with foamed tyres
- Different supporting bases and pad sizes
- And many more as per customers' requirements