

EN-US

---

# LR 1110

---

LR 1001.02

[www.liebherr.com](http://www.liebherr.com)

## LIEBHERR

Crawler cranes



# Concept and characteristics



## LR 1110 Standard

- Excellent lifting capacities thanks to optimized distribution of forces
- New cabin with improved and ergonomic operating concept
- Convenient ladder to access the cabin
- Optimized air-conditioning and airflow in the cabin
- Catwalks and optional railings on uppercarriage and cabin
- Transport possible with mounted boom foot and crawlers
- Foldable catwalks remain with the machine during transportation
- Optional railings can be disassembled in a few steps using pin connections

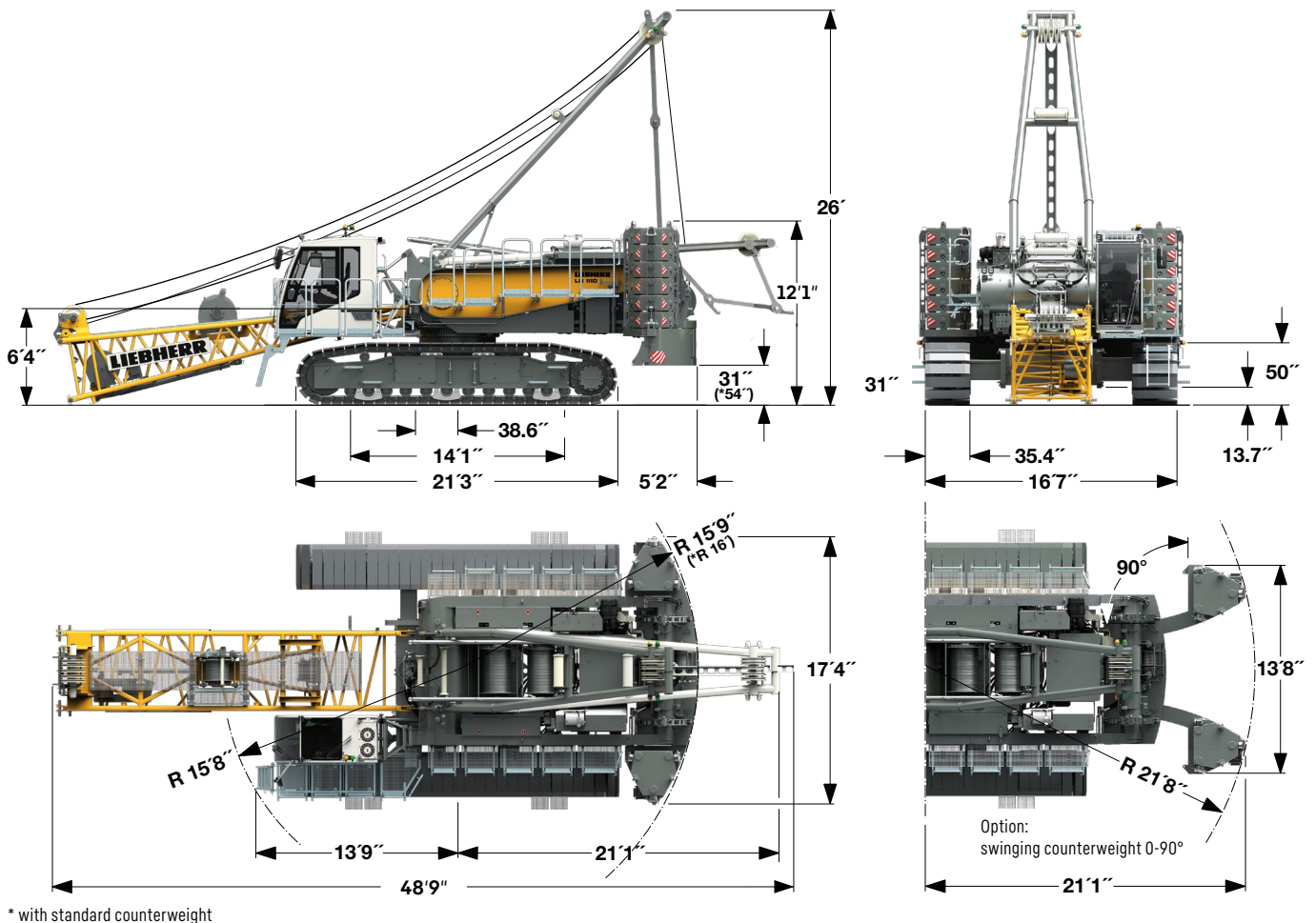


#### **Option: LR 1110 with swinging counterweight**

- Up to 20% increase in lifting capacities where tilting is the limiting factor
- Larger radii thanks to improved stability
- Function of swinging counterweight: the rear counterweight splits in the centre and is swung backwards to a max. angle of 90°. The counterweight can adopt any position within this angle range. The optimized lifting capacities are calculated online in real time via the LMI system and displayed in the operator's cab.
- Easy and quick adaptation of the counterweight to the lifting requirements
- Swinging counterweight requires less counterweight – swinging back leads to improved ground pressure and similar lifting capacities to those with full counterweight in standard position can be achieved.
- Swinging the counterweight back makes the machine narrower – this allows the machine to pass through narrow spaces.
- For increased lifting capacities the swinging counterweight can also be added to other LR 1110 with standard counterweight

# Dimensions

## Basic machine with undercarriage

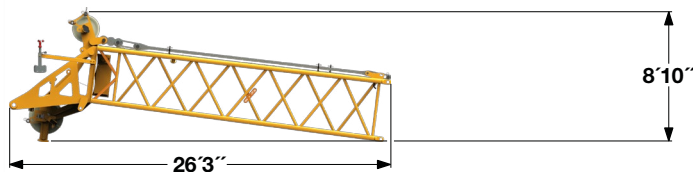
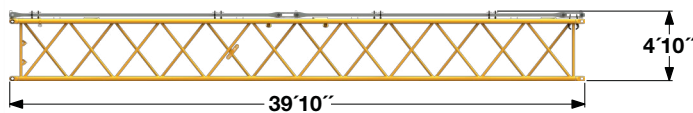
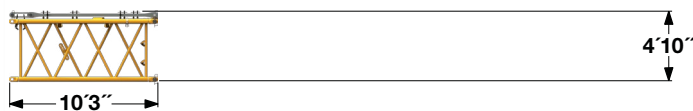
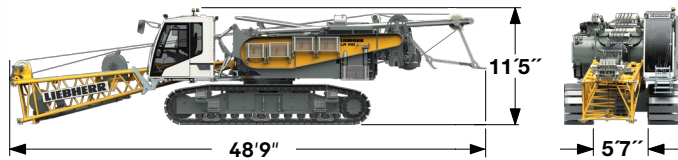


### Remarks

- The load capacities stated are valid for lifting operation only (corresponding with crane classification according to ISO 4301-1, crane group A1).
- Machine is standing on firm, horizontal ground.
- The weight of the lifting device (pulley block, hoist ropes, shackles, etc.) must be deducted from the load capacity.
- Additional equipment on boom (e.g. walkways) must be deducted from the load capacity.
- The max. admissible wind speed can be preselected in the LML software and referred to in the load chart.
- Working radii are measured from centre of swing ring and under load.
- The lifting capacities are valid for 360 degrees of swing.
- Calculation of stability under load is based on ANSI/ASME B 30.5 load ratings as well as ISO 4305 Table 2 and tested according to SAE J765 and SAE J987.
- Weights may vary depending on the delivered configuration of the machine, filling level of the tanks, as well as generally valid tolerances.
- The illustrations in this brochure may include options which are not within the standard scope of supply of the machine.

# Transport dimension and weights

## Basic machine and main boom 1512.xx



### Basic machine

Width	11'6"
Weight without hoist rope	lbs 125,664
Weight of hoist ropes	lbs/ft 2.3

with A-frame, winches 1 + 2 (2x 120kN), with boom foot, with crawler side frames, without rear counterweight, without carbody counterweight

### Boom sections 10 ft (No. 1512.22)

Width	5'3"
Weight including boom pendants	lbs 1,038
Weight including boom and jib pendants	lbs 1,184

### Boom section 20 ft (No. 1512.22)

Width	5'3"
Weight including boom pendants	lbs 1,676
Weight including boom and jib pendants	lbs 1,918

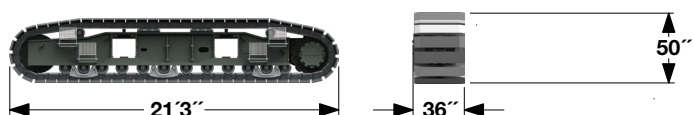
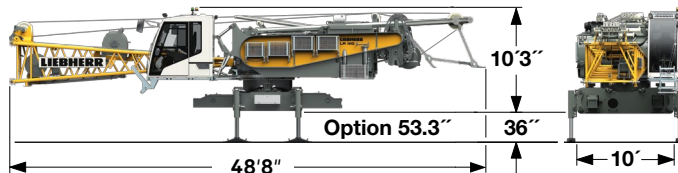
### Boom section 40 ft (No. 1512.22)

Width	5'3"
Weight including boom pendants	lbs 3,069
Weight including boom and jib pendants	lbs 3,554

### Boom head 23 ft (No. 1512.22)

Width	6'
Weight including boom pendants	lbs 4,828

## Transport option – basic machine and crawler side frames



### Basic machine

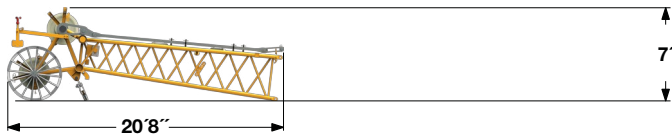
Width	11'6"
Weight without hoist rope	lbs 82,674
Weight of hoist ropes	lbs/ft 2.3

with A-frame, winches 1 + 2 (2x 120kN), with boom foot, without crawler side frames, without rear counterweight, without carbody counterweight

### Crawler side frame (2x)

Flat track pads	35.4"
Width	36"
Weight	lbs 22,484

## Luffing jib 1309.xx



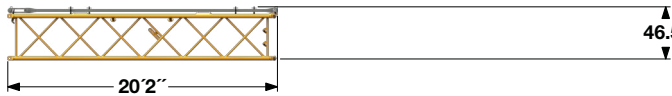
### Jib head 18 ft (No. 1309.22)

Width	4'7"
Weight including pendants	lbs 2,458



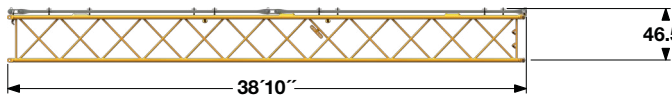
### Jib section 10 ft (No. 1309.20)

Width	4'7"
Weight including pendants	lbs 666



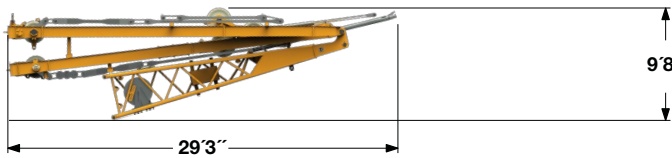
### Jib section 20 ft (No. 1309.20)

Width	4'7"
Weight including pendants	lbs 1,124



### Jib section 38 ft (No. 1309.20)

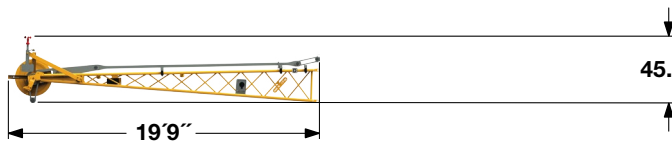
Width	4'7"
Weight including pendants	lbs 2,077



### Jib foot with A-frames 18 ft (No. 1309.22)

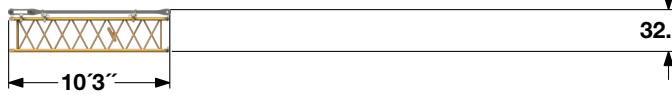
Width	5'4"
Weight including pendants	lbs 9,222

## Fixed jib 0806.xx



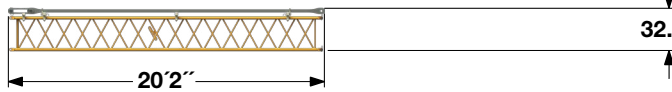
### Jib head 18 ft (No. 0806.16)

Width	36.2"
Weight including pendants	lbs 935



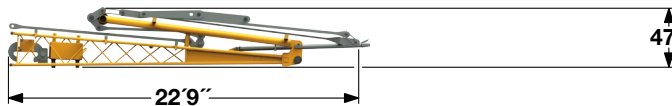
### Jib section 10 ft (No. 0806.15)

Width	36.6"
Weight including pendants	lbs 311



### Jib section 20 ft (No. 0806.15)

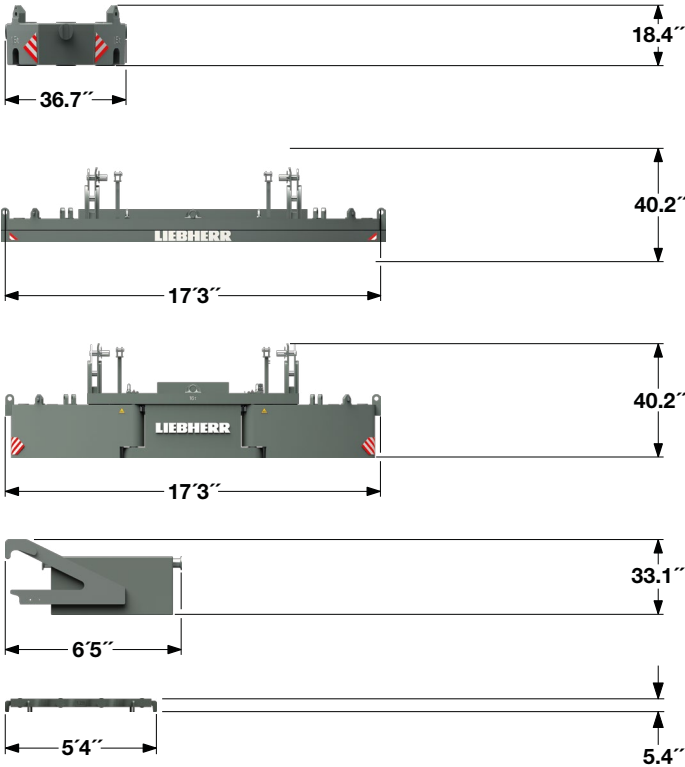
Width	3'1"
Weight including pendants	lbs 549



### Jib foot with A-frame 18 ft (No. 0806.20)

Width	5'11"
Weight including pendants	lbs 2,727

## Counterweight



### Counterweight (12x)

Width	37.2"
Weight	lbs 3,307

### Standard counterweight (1x)

Width	4'10"
Weight	lbs 35,274

### Swinging counterweight option (1x)

Width	4'10"
Weight	lbs 35,274

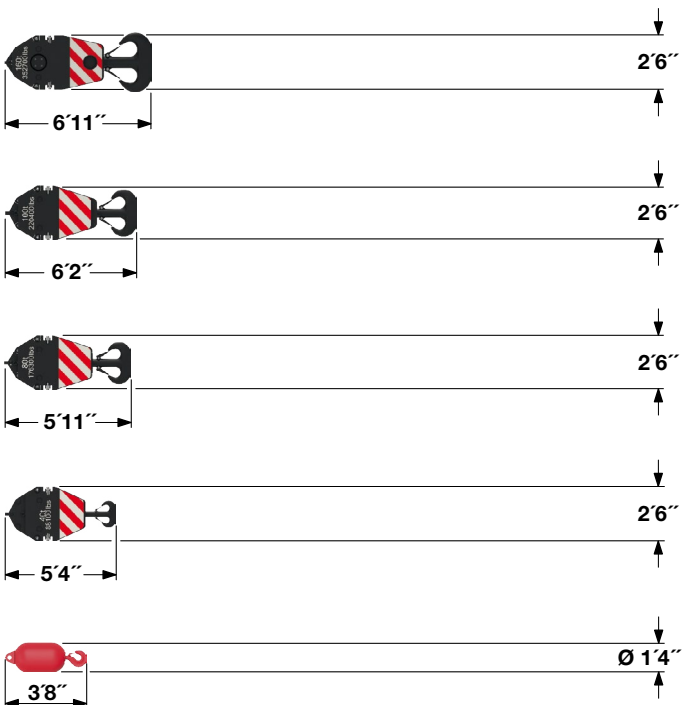
### Carbody counterweight (2x)

Standard	
Width	5'5"
Weight	lbs 16,535

### Carbody counterweight (2x)

Standard	
Width	5'
Weight	lbs 2,756

## Pulley block with additional weights / load hooks



### 160 t pulley block - 7 pulleys

Width	2'11"
Weight	lbs 3,307 / 4,960 / 6,614

### 100 t pulley block - 5 pulleys

Width	2'5"
Weight	lbs 2,866 / 3,968 / 5,071

### 80 t pulley block - 3 pulleys

Width	1'10"
Weight	lbs 2,205 / 3,307 / 4,409

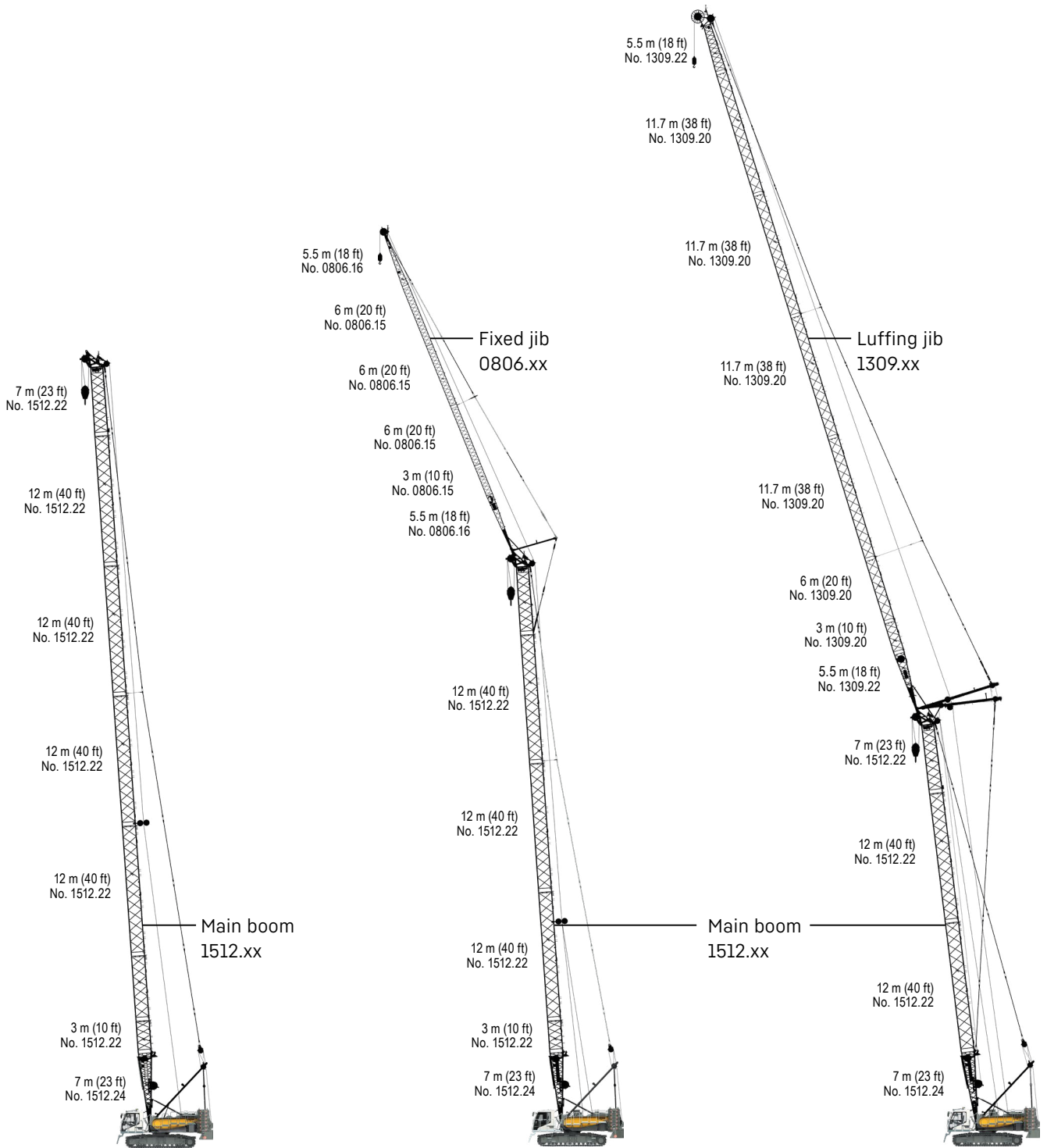
### 40 t pulley block - 1 pulley

Width	1'7"
Weight	lbs 1,543 / 2,425 / 3,307

### 12.5 t load hook

Width	1'4"
Weight	lbs 1,323

# Boom combinations



## Main boom

Mode 1	
<b>Max. length</b>	
1512.xx	ft 233

## Main boom + fixed jib

Mode 3	
<b>Max. combination</b>	
1512.xx	ft 174
0806.xx	ft 105
<b>Total length</b>	ft 279

## Main boom + luffing jib

Mode 4		
<b>Max. combination</b>		
1512.xx	ft 125	134
1309.xx	ft 219	190
<b>Total length</b>	ft 344	324



# Technical description



## Diesel engine

<b>Power rating according to ISO 9249</b>	230 kW (308 hp) at 1700 rpm
<b>Engine type</b>	Liebherr D 944 A7 SCR
<b>Fuel tank capacity</b>	800 l with continuous level indicator and reserve warning
<b>Exhaust certification</b>	97/68 EC Stage IV; EPA/CARB Tier 4f



## Noise measurement data and vibration

<b>Noise emission</b>	according to 2000/14/EC directive	
<b>Emission sound pressure level L<sub>PA</sub></b>	71 dB(A)	(in the cabin)
<b>Guaranteed sound power level L<sub>WA</sub></b>	108 dB(A)	(of the machine)
<b>Vibration transmitted to the machine operator</b>	< 8.20 ft/s <sup>2</sup>	(to the hand-arm system)
	< 1.64 ft/s <sup>2</sup>	(to the whole body)



## Hydraulic system

<b>Hydraulic pumps</b>	double axial displacement pump in open loop hydraulic system allows all functions to be operated simultaneously automatic working pressure cut-off to minimize peak pressure	
<b>Hydraulic oil tank capacity</b>	181 gal	
<b>Max. working pressure</b>	5,076 PSI	
<b>Hydraulic oil</b>	electronic monitoring of alle filters use of synthetic environmentally friendly oil	



## Control

<b>Control system</b>	includes all control and monitoring functions, designed to withstand extreme environmental conditions and heavy construction tasks	
<b>Display</b>	high resolution monitor in the operator's cabin, clear display of complete machine operating data, warnings and failure indications in the required language	
<b>Operation</b>	several movements can be performed simultaneously thanks to electro-hydraulic proportional control, all categories of loads can be positioned with utmost precision	



## Crawlers

<b>Drive system</b>	with fixed axial piston hydraulic motors	
<b>Crawler side frames</b>	maintenance-free, with hydraulic chain tensioning device	
<b>Brake</b>	hydraulically released, spring-loaded multi-disc holding brake	
<b>Drive speed</b>	0-1.74 mph	
<b>Flat track pads</b>	width 35.4"	



## Swing gear

<b>Drive system</b>	with fixed axial piston hydraulic motors, planetary gearbox, pinion
<b>Swing ring</b>	roller bearing with external teeth
<b>Brake</b>	hydraulically released, spring-loaded multi-disc holding brake
<b>Swing speed</b>	0-2.1 rpm continuously variable
<b>Speed control</b>	both swing modes are possible - speed control or free swing for speed control: a multi-disc holding brake locks automatically at zero swing motion.



## Hoisting gear

<b>Standard crane winches 1+2</b>	Internal low-maintenance planetary gearbox in oil bath, load support by the hydraulic system, spring-loaded, multi-disc holding brake, pressure controlled, variable flow hydraulic motors for the main winches, full utilisation of engine power as the winch speed is automatically adjusted to suit the respective line pull
<b>Line pull in the 4<sup>th</sup> layer</b>	26,977 lbf
<b>Rope diameter</b>	26 mm
<b>Drum diameter</b>	22.8"
<b>Rope speed</b>	0-446 ft/min
<b>Rope capacity in 4 layers</b>	840 ft
<b>Option - winch with free fall</b>	Free fall: clutch and braking functions are provided by the service brake (low wear and maintenance-free multi-disc brake in compact design)



## Boom/jib luffing winches

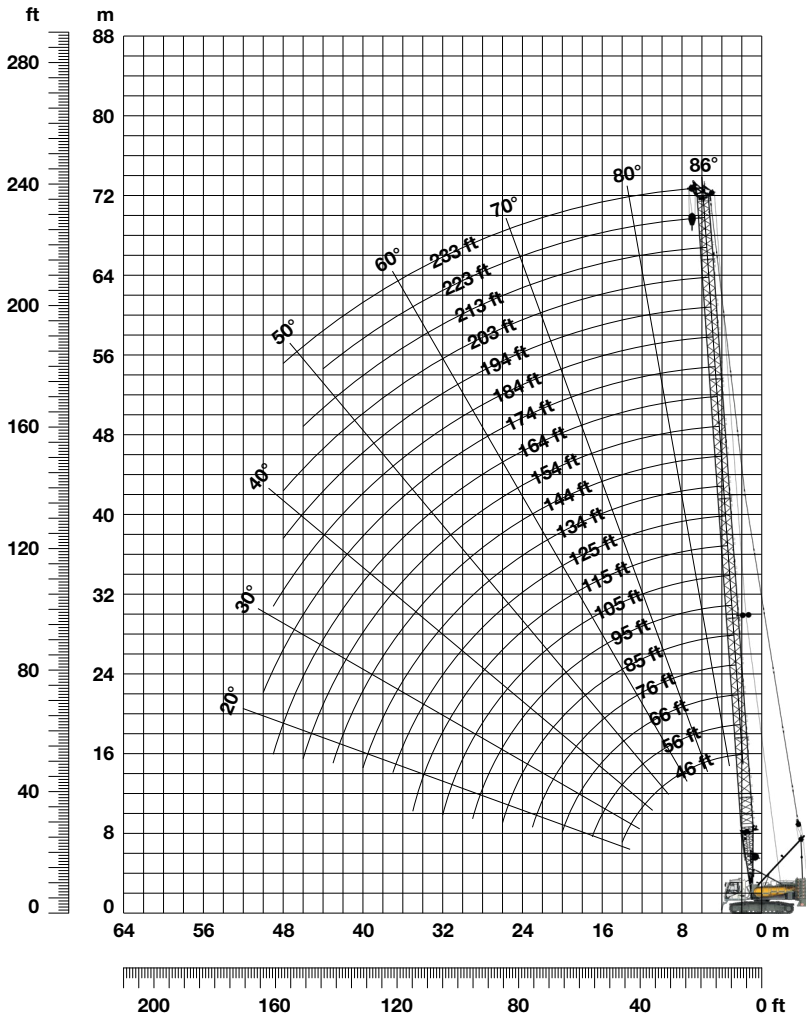
<b>Main boom</b>	
<b>Line pull</b>	26,145 lbf
<b>Rope diameter</b>	20 mm
<b>Boom luffing</b>	15-86° in 44 s
<b>Jib</b>	
<b>Line pull</b>	18,434 lbf
<b>Rope diameter</b>	20 mm
<b>Jib luffing</b>	15-78° in 46 s

## Operating weight

<b>Composition of operating weight</b>	basic machine with crawlers winches 1+2, A-frame 46 ft main boom, consisting of boom foot (23 ft) and boom head (23 ft) 75,000 lbs rear counterweight 38,600 lbs carbody counterweight 220,400 lbs pulley block
<b>Total weight</b>	approx. 254,855 lbs

# Main boom 1512.xx

## Boom lengths 46-233 ft



**Auxiliary jib 79,400 lbs (option)**

The maximum capacity of the auxiliary jib is 79,400 lbs. The corresponding load chart is programmed in the LML system.

### Main boom configuration 1512.xx

Boom section	Amount of boom sections									
	1	1	1	1	1	1	1	1	1	1
Boom foot 23 ft	1									
Boom section 10 ft		1								
Boom section 20 ft			1							
Boom section 40 ft				1						
Boom head 23 ft	1	1	1	1	1	1	1	1	1	1
<b>Boom length [ft]</b>	<b>46</b>	<b>56</b>	<b>66</b>	<b>76</b>	<b>85</b>	<b>95</b>	<b>105</b>	<b>115</b>	<b>125</b>	<b>134</b>
Auxiliary jib	✓	✓	✓	✓	✓	✓	✓	✓	✓	✓
Boom foot 23 ft	1	1	1	1	1	1	1	1	1	1
Boom section 10 ft		1								
Boom section 20 ft	1	1								
Boom section 40 ft	2	1	3	3	3	3	4	4	4	4
Boom head 23 ft	1	1	1	1	1	1	1	1	1	1
<b>Boom length [ft]</b>	<b>144</b>	<b>154</b>	<b>164</b>	<b>174</b>	<b>184</b>	<b>194</b>	<b>203</b>	<b>213</b>	<b>223</b>	<b>233</b>
Auxiliary jib	✓	✓	✓							

Actual lengths of boom sections are metric (e.g. 3 m, 6 m, 7 m, 12 m). The figures shown above are approximate conversions to feet.

# Load capacities with main boom

Load capacities in 1000 lbs with 75,000 lbs standard counterweight and 38,600 lbs carbody counterweight

Radius [ft]	Boom length [ft]																			
	46	56	66	76	85	95	105	115	125	135	144	154	164	174	184	194	203	213	223	233
9.7	254.6																			
15	230.6	217.0	204.9	194.0	184.2	175.2	154.8	137.6												
20	158.0	152.8	146.4	140.4	135.0	129.8	125.0	120.4	114.8	105.4	93.7	92.3	79.3	72.2	64.4	59.0				
25	112.5	112.5	112.6	109.4	105.9	102.5	99.3	96.1	93.2	90.4	87.7	85.1	77.5	70.7	63.3	58.0	52.4	47.2	42.8	38.7
30	86.9	86.9	86.8	86.7	86.7	84.3	81.9	79.6	77.4	75.3	73.3	71.3	69.4	67.5	62.0	56.5	51.5	46.4	42.5	38.2
40	58.9	58.8	58.8	58.6	58.6	58.4	58.3	58.1	57.1	55.6	54.3	52.9	51.7	50.4	49.2	47.9	46.8	44.8	41.2	37.3
45	50.3	50.3	50.3	50.1	50.1	49.9	49.8	49.5	49.4	48.9	47.8	46.6	45.5	44.4	43.3	42.2	41.2	40.2	39.2	36.9
55		38.6	38.6	38.4	38.4	38.2	38.0	37.8	37.7	37.4	37.2	37.0	36.2	35.3	34.5	33.6	32.8	31.9	31.1	30.3
65			30.9	30.7	30.7	30.5	30.3	30.1	30.0	29.7	29.5	29.3	29.1	28.8	28.1	27.3	26.7	26.1	25.4	24.7
75				25.4	25.4	25.2	25.0	24.8	24.6	24.4	24.2	23.9	23.7	23.5	23.3	22.8	22.2	21.5	20.7	20.0
85					21.3	21.1	20.9	20.7	20.6	20.3	20.1	19.8	19.7	19.4	19.2	18.9	18.3	17.6	16.9	16.2
95						17.9	17.8	17.5	17.4	17.2	16.9	16.7	16.5	16.2	16.0	15.7	15.3	14.6	14.0	13.3
105							15.2	15.0	14.9	14.6	14.4	14.2	14.0	13.7	13.5	13.2	12.8	12.2	11.6	10.9
115								12.9	12.8	12.6	12.4	12.1	11.9	11.7	11.4	11.1	10.8	10.2	9.6	9.0
125									11.1	10.9	10.7	10.4	10.2	9.9	9.7	9.4	9.2	8.6	8.0	7.4
135										9.4	9.2	8.9	8.8	8.5	8.3	8.0	7.8	7.2	6.7	6.1
140											8.5	8.3	8.1	7.8	7.6	7.3	7.1	6.6	6.0	5.5
145												7.7	7.5	7.2	7.0	6.7	6.5	6.0	5.5	4.9
155													6.4	6.2	5.9	5.7	5.4	5.0	4.5	
160													5.9	5.7	5.4	5.2	5.0	4.5		
165														5.2	5.0	4.7	4.5			
170														4.8	4.5					

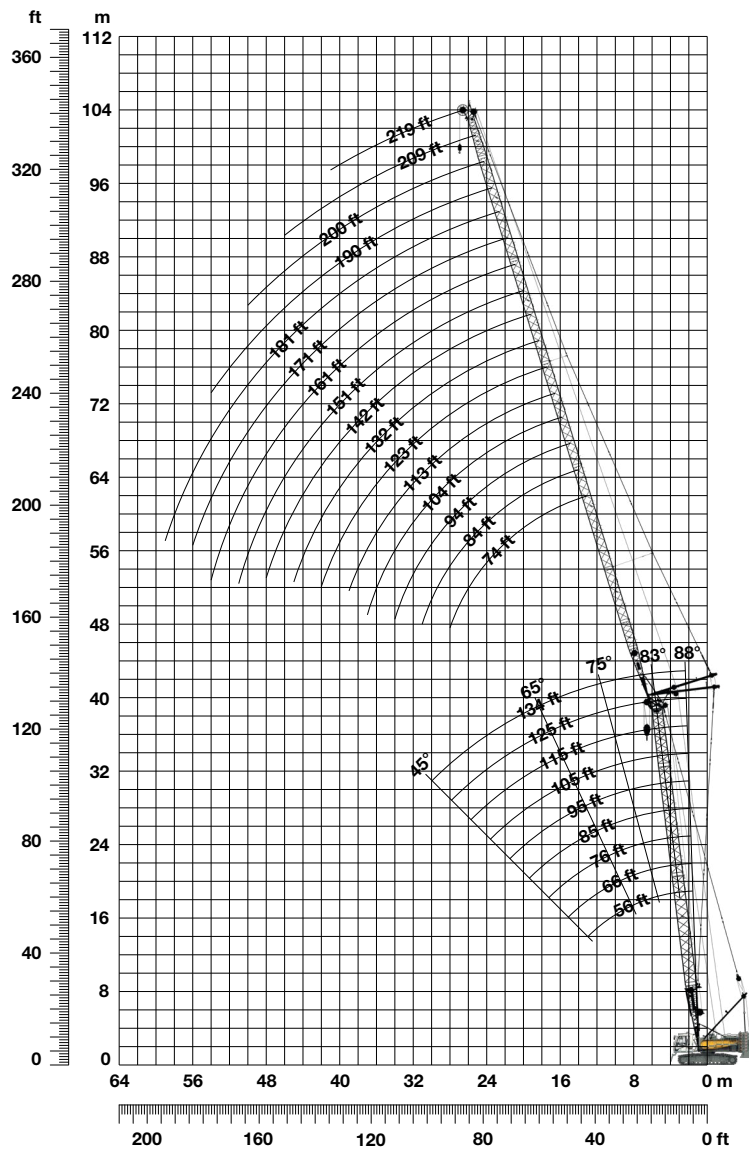
Load capacities in 1000 lbs with 75,000 lbs swinging counterweight 90° and 38,600 lbs carbody counterweight

Radius [ft]	Boom length [ft]																				
	56	66	76	85	95	105	115	125	135	144	154	164	174	184	194	203	213	223	233		
22.8																				38.7	
25																					
30																			47.2	42.8	38.7
35														69.2	62.0	56.5	51.5	46.4	42.5	38.2	
40										72.7	71.0	69.2	67.6	65.9	60.5	55.1	50.7	45.6	42.1	37.7	
45						65.6	65.4	64.8	63.2	61.8	60.3	58.9	57.5	56.2	54.0	50.0	44.8	41.2	37.3		
45			56.5	56.5	56.3	56.1	55.9	55.8	55.6	54.4	53.2	52.0	50.8	49.6	48.5	47.4	44.2	40.6	36.9		
50	49.4	49.4	49.2	49.2	49.0	48.8	48.6	48.5	48.3	48.1	47.4	46.4	45.3	44.3	43.2	42.3	41.3	39.8	36.6		
55	43.6	43.6	43.5	43.4	43.2	43.1	42.8	42.7	42.5	42.3	42.0	41.7	40.7	39.8	38.8	38.0	37.0	36.2	35.3		
60		38.9	38.8	38.8	38.6	38.4	38.2	38.0	37.8	37.6	37.3	37.1	36.8	36.0	35.1	34.3	33.4	32.6	31.8		
65		35.0	34.9	34.9	34.7	34.5	34.3	34.1	33.9	33.7	33.4	33.2	33.0	32.7	31.9	31.1	30.3	29.6	28.8		
75			28.8	28.8	28.6	28.5	28.2	28.1	27.8	27.6	27.4	27.2	26.9	26.7	26.6	26.1	25.4	24.8	24.0		
85				24.4	24.2	24.0	23.8	23.7	23.4	23.2	22.9	22.8	22.5	22.3	22.0	21.8	21.2	20.5	19.7		
95					20.6	20.5	20.3	20.2	19.9	19.7	19.4	19.2	19.0	18.8	18.5	18.3	17.8	17.1	16.4		
105						17.7	17.5	17.4	17.1	16.9	16.6	16.4	16.2	15.9	15.7	15.5	15.1	14.5	13.8		
115							15.2	15.1	14.8	14.6	14.3	14.2	13.9	13.7	13.4	13.2	12.8	12.3	11.6		
125								13.1	12.9	12.7	12.4	12.3	12.0	11.8	11.5	11.3	11.0	10.4	9.8		
135									11.3	11.1	10.8	10.6	10.4	10.1	9.9	9.7	9.4	8.9	8.3		
140										10.4	10.1	9.9	9.7	9.4	9.1	8.9	8.7	8.2	7.6		
150											8.8	8.6	8.4	8.1	7.9	7.7	7.4	7.0	6.4		
160												7.5	7.2	7.0	6.7	6.5	6.3	5.9	5.3		
170													6.2	6.0	5.8	5.6	5.3	5.0	4.4		
175														5.6	5.3	5.1	4.8	4.5			
180															5.1	4.9	4.7				
185																4.5					

TLT 11943097 - M00000 V9. Above load charts are for reference only. For actual lift duty please refer to load chart in operator's cabin or manual. Otherwise we recommend you to plan your lifting job using Crane Planner 2.0.

# Luffing jib 1309.xx

## Jib lengths 74-219 ft, standard counterweight



### Jib configuration 1309.xx

Jib section	Amount of jib sections															
	1	1	1	1	1	1	1	1	1	1	1	1	1	1	1	1
Jib foot 18 ft	1															
Jib section 10 ft		1														
Jib section 20 ft			1													
Jib section 38 ft	1	1	1	1	2	2	2	2	3	3	3	3	4	4	4	4
Jib head 18 ft	1	1	1	1	1	1	1	1	1	1	1	1	1	1	1	1
<b>Jib length [ft]</b>	<b>74</b>	<b>84</b>	<b>94</b>	<b>104</b>	<b>113</b>	<b>123</b>	<b>132</b>	<b>142</b>	<b>151</b>	<b>161</b>	<b>171</b>	<b>181</b>	<b>190</b>	<b>200</b>	<b>209</b>	<b>219</b>

Actual lengths of boom sections are metric (e.g. 3 m, 5.5 m, 6 m, 11.7 m). The figures shown above are approximate conversions to feet. For main boom configuration please refer to the table on page 10.

# Load capacities with luffing jib

**Load capacities in 1000 lbs, 56 ft main boom 88°, standard counterweight**

Radius [ft]	Jib length [ft]							
	74	104	123	142	161	181	200	219
25.2	81.6							
35	64.2	57.6						
40	56.7	51.9	48.0	40.2				
50	46.0	43.0	40.6	37.2	31.9	25.5		
60	38.5	36.5	34.5	32.4	29.2	24.3	20.8	16.9
70	31.8	31.1	30.0	27.9	26.2	23.0	19.7	16.1
80	26.9	26.6	26.0	24.7	23.3	21.2	18.7	15.2
90		22.9	22.7	21.8	20.7	19.3	17.1	14.5
105		18.6	18.6	18.2	17.5	16.5	15.5	13.2
125			14.4	14.4	14.0	13.5	12.6	11.4
145				11.5	11.3	10.9	10.5	9.5
165					5.2	8.9	8.5	7.8
180						7.6	7.2	6.7
200							5.4	5.5
215								4.7

75,000 lbs standard counterweight and 38,600 lbs carbody counterweight

**Load capacities in 1000 lbs, 76 ft main boom 88°, standard counterweight**

Radius [ft]	Jib length [ft]							
	74	104	123	142	161	181	200	219
25.9	69.5							
35	57.0	49.7						
40	51.2	46.4	42.3					
45	46.8	42.5	39.4	35.1	30.0			
50	42.6	39.2	36.4	33.2	29.1	23.7		
55	39.2	36.1	34.1	30.9	28.2	23.1	19.8	
60	36.3	33.8	31.6	29.3	26.4	22.7	19.2	15.8
80	25.9	25.5	24.5	23.1	21.2	19.3	17.0	14.3
110		7.8	16.2	16.3	15.7	14.3	13.3	11.7
125			13.5	13.4	13.3	12.6	11.5	10.2
145				10.7	10.8	10.3	9.7	8.6
165					4.8	8.7	8.1	7.1
180						7.6	7.2	6.1
200							5.9	5.1
210								4.6

75,000 lbs standard counterweight and 38,600 lbs carbody counterweight

**Load capacities in 1000 lbs, 95 ft main boom 88°, standard counterweight**

Radius [ft]	Jib length [ft]							
	74	104	123	142	161	181	200	219
26.6	62.5							
35	53.5	46.6						
40	48.9	43.3	39.0					
45	45.0	39.9	36.7	31.4	26.4			
50	41.3	37.2	34.1	30.0	25.9	21.5		
55	38.2	34.6	32.4	28.2	24.8	21.2	17.9	
60	35.3	32.7	30.1	26.9	23.7	20.4	17.3	14.7
80	24.3	23.8	22.8	21.8	19.6	17.6	15.6	13.1
110		15.1	15.2	14.9	14.4	13.5	12.4	11.0
125			12.6	12.3	12.2	11.9	10.9	9.8
145				10.0	10.1	9.8	9.4	8.3
165					8.2	8.3	7.8	7.0
185						6.9	6.7	5.8
200							5.7	5.1
210								4.5

75,000 lbs standard counterweight and 38,600 lbs carbody counterweight

**Load capacities in 1000 lbs, 115 ft main boom 88°, standard counterweight**

Radius [ft]	Jib length [ft]							
	74	104	123	142	161	181	200	219
27.3	54.1							
35	49.8	40.6						
40	46.3	38.3	33.4					
45	42.5	35.7	31.7	27.4				
50	38.8	33.6	29.6	26.1	22.7	19.0		
55	35.2	31.3	28.2	24.9	22.0	18.6	16.0	
60	32.3	29.5	26.4	23.9	21.3	18.0	15.5	13.1
80	22.8	21.5	20.5	19.7	17.7	15.6	13.8	11.8
110		14.2	14.0	13.5	12.9	12.0	11.2	9.9
125			11.8	11.4	11.1	10.6	9.9	8.9
145				9.3	9.2	8.9	8.7	7.7
165					7.6	7.5	7.3	6.6
185						6.3	6.3	5.6
200							5.4	4.8
205								4.5

75,000 lbs standard counterweight and 38,600 lbs carbody counterweight

**Load capacities in 1000 lbs, 125 ft main boom 88°, standard counterweight**

Radius [ft]	Jib length [ft]							
	74	104	123	142	161	181	200	219
27.6	46.9							
35	43.6	35.8						
40	41.2	34.1	30.1					
45	38.7	32.5	28.8	25.1				
50	36.0	31.1	27.5	24.1	21.1	17.7		
55	33.1	29.0	26.4	23.1	20.4	17.5	14.8	
60	30.7	27.4	25.2	22.2	19.7	16.9	14.5	12.1
70	25.4	23.5	22.8	20.0	18.3	15.8	13.7	11.4
80	21.8	20.5	19.3	18.2	16.5	14.7	13.0	10.8
110		13.7	13.3	12.8	12.3	11.4	10.6	9.1
130			6.8	10.4	10.1	9.7	9.0	8.0
145				9.1	8.8	8.4	8.1	7.3
165					7.5	7.1	6.9	6.3
185						6.1	6.0	5.4
200							5.3	4.6

75,000 lbs standard counterweight and 38,600 lbs carbody counterweight

**Load capacities in 1000 lbs, 135 ft main boom 88°, standard counterweight**

Radius [ft]	Jib length [ft]							
	74	104	123	142	161	181		
28	43.0							
35	39.8	32.4						
40	37.7	31.2	27.4					
45	35.6	29.7	26.3	22.9				
50	33.4	28.3	25.4	22.1	19.2			
55	30.7	26.5	24.4	21.3	18.6	15.8		
60	28.7	25.3	23.3	20.4	17.9	15.3		
70	24.3	21.9	21.2	18.7	16.8	14.3		
80	21.0	19.4	18.1	17.2	15.4	13.5		
90		16.8	16.2	15.2	14.5	12.6		
110		13.3	12.6	12.1	11.7	10.7		
125			10.9	10.3	10.1	9.4		
145				8.7	8.4	7.9		
165					7.1	6.8		
185						5.9		

75,000 lbs standard counterweight and 38,600 lbs carbody counterweight

TLT 11943097 - M00000 V9. Above load charts are for reference only. For actual lift duty please refer to load chart in operator's cabin or manual. Otherwise we recommend you to plan your lifting job using Crane Planner 2.0.

# Load capacities with luffing jib

**Load capacities in 1000 lbs, 56 ft main boom 83°, standard counterweight**

Radius [ft]	Jib length [ft]							
	74	104	123	142	161	181	200	219
36.5	65.3							
50	46.8	44.9						
55	41.6	40.8	39.2					
60	37.3	36.8	35.9	34.5				
65	33.8	33.3	33.0	31.7	30.5			
70	30.9	30.4	30.1	29.3	28.2	23.7		
75	28.3	27.9	27.6	27.2	26.2	23.2	20.0	
80	26.1	25.7	25.4	25.0	24.4	22.7	19.7	15.7
85	24.1	23.8	23.5	23.1	22.8	21.7	19.3	15.4
115		11.6	15.8	15.5	15.1	14.8	14.3	13.4
130			13.3	13.0	12.7	12.3	12.0	11.2
150				10.5	10.2	9.9	9.5	8.9
170					6.2	8.0	7.7	7.1
185						6.8	6.5	6.0
205							5.2	4.8

75,000 lbs standard counterweight and 38,600 lbs carbody counterweight

**Load capacities in 1000 lbs, 76 ft main boom 83°, standard counterweight**

Radius [ft]	Jib length [ft]							
	74	104	123	142	161	181	200	219
38.9	57.7							
50	45.3	42.4						
55	41.0	38.6	37.1					
60	36.9	35.4	34.0	32.6				
65	33.4	32.6	31.4	30.0	28.3			
70	30.5	30.0	29.0	27.8	26.7	22.3		
80	25.8	25.3	25.0	24.1	23.1	21.6	18.5	
85	23.9	23.5	23.2	22.5	21.6	20.5	18.2	14.6
115		15.8	15.6	15.2	14.8	14.2	13.4	12.5
135			7.7	12.1	11.8	11.4	10.6	9.9
150				10.3	10.0	9.6	9.0	8.3
170					8.1	7.8	7.3	6.6
190						6.3	5.9	5.2
200							5.3	4.6
205							5.0	

75,000 lbs standard counterweight and 38,600 lbs carbody counterweight

**Load capacities in 1000 lbs, 95 ft main boom 83°, standard counterweight**

Radius [ft]	Jib length [ft]							
	74	104	123	142	161	181	200	219
41.3	51.2							
50	42.7	40.0						
60	35.7	33.4	32.1					
65	32.9	30.9	29.6	28.3				
70	30.0	28.6	27.5	26.3	25.1			
75	27.6	26.6	25.5	24.4	23.4	20.5		
80	25.4	24.9	23.8	22.7	21.8	20.1	17.2	
85	23.5	23.1	22.3	21.3	20.4	19.3	16.9	13.6
90	21.8	21.5	21.0	19.9	19.0	18.0	16.7	13.5
115		15.5	15.3	14.9	14.1	13.3	12.6	11.7
135			12.1	11.8	11.4	10.7	9.9	9.2
155				9.5	9.3	8.6	7.9	7.2
170					7.9	7.4	6.7	6.0
190						6.0	5.3	4.7
205							4.5	

75,000 lbs standard counterweight and 38,600 lbs carbody counterweight

**Load capacities in 1000 lbs, 115 ft main boom 83°, standard counterweight**

Radius [ft]	Jib length [ft]							
	74	104	123	142	161	181	200	219
43.7	45.6							
55	36.7	34.3						
60	33.7	31.5	30.2					
65	31.1	29.1	27.9	26.6				
70	28.9	27.0	25.9	24.7	22.4			
75	26.9	25.1	24.1	23.0	21.9	18.5		
85	23.2	22.0	21.0	20.0	19.1	17.9	15.2	
90	21.5	20.7	19.7	18.8	17.9	16.9	14.9	12.4
100		18.4	17.5	16.6	15.8	14.9	14.0	12.0
120		14.3	14.1	13.3	12.5	11.7	10.9	10.1
140			6.9	10.8	10.1	9.3	8.6	7.9
155				9.3	8.7	7.9	7.3	6.5
175					7.1	6.4	5.8	5.1
185						5.7	5.1	4.4
195						5.2	4.5	

75,000 lbs standard counterweight and 38,600 lbs carbody counterweight

**Load capacities in 1000 lbs, 125 ft main boom 83°, standard counterweight**

Radius [ft]	Jib length [ft]							
	74	104	123	142	161	181	200	219
44.9	43.0							
55	35.6	33.2						
60	32.7	30.5	28.2					
65	30.2	28.2	27.0	23.8				
75	26.2	24.3	23.3	22.2	19.7			
80	24.5	22.8	21.8	20.7	19.1	16.5		
85	22.9	21.3	20.4	19.4	18.4	16.1	13.7	
90	21.3	20.1	19.1	18.2	17.2	15.7	13.5	11.1
120		14.2	13.7	12.8	12.1	11.3	10.5	9.6
140			11.1	10.4	9.7	8.9	8.3	7.5
160				4.9	7.9	7.2	6.5	5.8
175					6.8	6.1	5.5	4.7
180						5.8	5.1	4.4
190						5.2	4.6	
195						4.9		

75,000 lbs standard counterweight and 38,600 lbs carbody counterweight

**Load capacities in 1000 lbs, 135 ft main boom 83°, standard counterweight**

Radius [ft]	Jib length [ft]							
	74	104	123	142	161	181		
46.1	38.2							
55	34.4	29.4						
65	29.3	27.3	24.7					
70	27.2	25.3	23.8	20.7				
75	25.4	23.6	22.6	20.0	17.7			
80	23.8	22.0	21.1	19.4	17.1	14.7		
90	21.0	19.4	18.5	17.5	16.0	13.9		
95	19.6	18.3	17.4	16.4	15.5	13.6		
100		17.3	16.4	15.5	14.6	13.1		
120		14.0	13.2	12.3	11.6	10.8		
140			10.8	10.0	9.3	8.5		
150				9.1	8.4	7.6		
160				8.3	7.6	6.8		
175					6.5	5.8		
195						4.6		

75,000 lbs standard counterweight and 38,600 lbs carbody counterweight

TLT 11943097 - M00000 V9. Above load charts are for reference only. For actual lift duty please refer to load chart in operator's cabin or manual. Otherwise we recommend you to plan your lifting job using Crane Planner 2.0.

# Load capacities with luffing jib

**Load capacities in 1000 lbs, 56 ft main boom 75°, standard counterweight**

Radius [ft]	Jib length [ft]							
	74	104	123	142	161	181	200	219
53.9	40.5							
70	29.3	28.7						
75	26.9	26.4	26.0					
85	23.0	22.5	22.2	21.7				
90	21.4	20.9	20.6	20.2				
95		19.5	19.2	18.8	18.4			
100		18.3	17.9	17.5	17.2	16.5		
110		16.1	15.8	15.4	15.0	14.6	13.8	
115		15.1	14.9	14.5	14.1	13.7	13.0	12.1
120		14.3	14.0	13.6	13.3	12.8	12.2	11.4
140			11.2	10.9	10.5	10.1	9.7	8.9
155				9.3	9.0	8.6	8.2	7.4
175					7.2	6.9	6.5	5.8
195						5.5	5.2	4.5
205							4.6	

75,000 lbs standard counterweight and 38,600 lbs carbody counterweight

**Load capacities in 1000 lbs, 76 ft main boom 75°, standard counterweight**

Radius [ft]	Jib length [ft]							
	74	104	123	142	161	181	200	219
59	35.0							
70	28.3							
75	26.0	25.4						
80	24.0	23.4	22.8					
90	20.7	20.1	19.7	19.0				
95	19.3	18.8	18.4	17.8				
100		17.5	17.2	16.7	15.9			
105		16.4	16.1	15.7	14.9	14.0		
115		14.5	14.2	13.8	13.3	12.4	11.6	
125		12.9	12.6	12.2	11.9	11.0	10.3	9.5
145			10.1	9.8	9.4	8.8	8.1	7.3
165				7.9	7.6	7.1	6.4	5.6
180					6.5	6.0	5.3	4.6
195						5.1	4.4	
200							4.8	

75,000 lbs standard counterweight and 38,600 lbs carbody counterweight

**Load capacities in 1000 lbs, 95 ft main boom 75°, standard counterweight**

Radius [ft]	Jib length [ft]							
	74	104	123	142	161	181	200	219
64.1	29.8							
80	23.1	21.9						
85	21.4	20.5	19.4					
95	18.5	17.9	17.1	16.2				
100	17.3	16.7	16.1	15.2				
105		15.7	15.2	14.3	13.4			
110		14.7	14.4	13.5	12.6	11.7		
120		13.1	12.7	12.0	11.2	10.4	9.6	
130		11.6	11.3	10.8	10.0	9.2	8.4	7.6
150			9.1	8.7	8.0	7.3	6.6	5.8
165				7.4	6.8	6.1	5.4	4.7
170				7.0	6.5	5.7	5.1	
180					5.8	5.1	4.4	
185					5.5	4.8		
190						4.5		

75,000 lbs standard counterweight and 38,600 lbs carbody counterweight

**Load capacities in 1000 lbs, 115 ft main boom 75°, standard counterweight**

Radius [ft]	Jib length [ft]							
	74	104	123	142	161	181	200	219
69.2	25.1							
85	20.2	18.5						
90	18.9	17.3	16.4					
100	16.5	15.3	14.5	13.5				
105	15.4	14.5	13.6	12.7				
110		13.7	12.9	11.9	11.1			
115		13.0	12.2	11.3	10.5	9.5		
125		11.6	10.9	10.0	9.3	8.4	7.7	
135		10.3	9.8	9.0	8.2	7.4	6.7	5.9
150			8.4	7.6	6.9	6.1	5.4	4.6
155				8.0	7.2	6.5	5.8	5.1
160					6.9	6.2	5.4	4.7
170					6.2	5.5	4.7	
175					5.9	5.2	4.4	
185						4.6		

75,000 lbs standard counterweight and 38,600 lbs carbody counterweight

**Load capacities in 1000 lbs, 125 ft main boom 75°, standard counterweight**

Radius [ft]	Jib length [ft]							
	74	104	123	142	161	181	200	219
71.7	23.0							
85	19.2	17.5						
95	17.0	15.4	14.5					
105	15.1	13.7	12.9	11.9				
110	14.1	12.9	12.1	11.2	10.4			
120		11.6	10.8	9.9	9.2	8.3		
125		11.0	10.2	9.4	8.6	7.8	6.9	
135		9.9	9.2	8.4	7.6	6.8	6.1	5.2
140		8.2	8.7	7.9	7.2	6.4	5.6	4.8
145			8.3	7.5	6.8	6.0	5.2	4.4
150			7.9	7.1	6.4	5.6	4.9	
155			7.5	6.7	6.0	5.2	4.5	
165				6.0	5.3	4.6		
175				5.4	4.7			
180					4.4			

75,000 lbs standard counterweight and 38,600 lbs carbody counterweight

**Load capacities in 1000 lbs, 135 ft main boom 75°, standard counterweight**

Radius [ft]	Jib length [ft]							
	74	104	123	142	161	181		
74.2	21.0							
90	17.1	15.5						
95	16.1	14.5	13.6					
105	14.3	12.9	12.0	11.1				
110	13.5	12.1	11.3	10.4				
115		11.5	10.7	9.8	9.0			
120		10.9	10.1	9.2	8.4	7.5		
125		10.3	9.5	8.7	7.9	7.0		
130		9.8	9.0	8.2	7.4	6.6		
135		9.3	8.5	7.7	7.0	6.1		
140		8.8	8.1	7.3	6.5	5.7		
155			6.9	6.1	5.4	4.6		
160			6.5	5.8	5.1			
170				5.1	4.5			
180					4.6			

75,000 lbs standard counterweight and 38,600 lbs carbody counterweight

TLT 11943097 - M00000 V9. Above load charts are for reference only. For actual lift duty please refer to load chart in operator's cabin or manual. Otherwise we recommend you to plan your lifting job using Crane Planner 2.0.

# Load capacities with luffing jib

**Load capacities in 1000 lbs, 56 ft main boom 65°, standard counterweight**

Radius [ft]	Jib length [ft]							
	74	104	123	142	161	181	200	219
74.1	25.6							
95	18.7	18.1						
100	17.5	16.9						
105		15.9	15.5					
115		14.0	13.7	13.2				
125		12.5	12.1	11.7	11.3			
130		11.8	11.5	11.1	10.7			
135			10.8	10.4	10.1	9.5		
150			9.2	8.9	8.5	8.0	7.4	
160				7.9	7.6	7.2	6.6	5.8
165				7.5	7.2	6.8	6.2	5.4
180					6.1	5.7	5.1	4.4
185					5.8	5.4	4.8	
190						5.1	4.5	
200							4.5	

75,000 lbs standard counterweight and 38,600 lbs carbody counterweight

**Load capacities in 1000 lbs, 76 ft main boom 65°, standard counterweight**

Radius [ft]	Jib length [ft]							
	74	104	123	142	161	181	200	
82.4	20.9							
100	16.3	15.6						
110	14.3	13.8	13.3					
125		11.5	11.1	10.7				
135		10.3	9.9	9.5	8.8			
140		9.7	9.4	8.9	8.3			
145			8.9	8.4	7.9	7.1		
155				7.9	7.6	7.0	6.3	5.5
160					7.1	6.6	5.9	5.2
165					6.8	6.3	5.5	4.8
170					6.4	5.9	5.2	4.5
175					6.0	5.6	4.9	
180						5.3	4.6	
190							4.7	
195							4.5	

75,000 lbs standard counterweight and 38,600 lbs carbody counterweight

**Load capacities in 1000 lbs, 95 ft main boom 65°, standard counterweight**

Radius [ft]	Jib length [ft]						
	74	104	123	142	161	181	
90.7	17.1						
110	13.3	12.5					
120	11.7	11.1	10.4				
130		9.9	9.3	8.4			
145		8.3	7.9	7.1	6.3		
155			7.1	6.3	5.6	4.8	
160			6.7	5.9	5.2	4.5	
165			6.3	5.6	4.9		
170				5.3	4.6		
185				4.4			

75,000 lbs standard counterweight and 38,600 lbs carbody counterweight

**Load capacities in 1000 lbs, 115 ft main boom 65°, standard counterweight**

Radius [ft]	Jib length [ft]				
	74	104	123	142	
99	13.5				
120	10.6	9.3			
125	10.0	8.7			
130		8.3	7.5		
140		7.4	6.6	5.8	
145		7.0	6.3	5.4	
150		6.6	5.9	5.1	
155		6.2	5.6	4.8	
160			5.2	4.4	
170			4.6		

75,000 lbs standard counterweight and 38,600 lbs carbody counterweight

**Load capacities in 1000 lbs, 125 ft main boom 65°, standard counterweight**

Radius [ft]	Jib length [ft]				
	74	104	123	142	
103.2	11.8				
125	9.2	7.8			
130	8.7	7.4			
135		7.0	6.2		
145		6.2	5.5	4.6	
160		5.2	4.5		

75,000 lbs standard counterweight and 38,600 lbs carbody counterweight

**Load capacities in 1000 lbs, 135 ft main boom 65°, standard counterweight**

Radius [ft]	Jib length [ft]				
	74	104	123		
107.3	10.1				
125	8.2	6.8			
135	7.3	6.0	5.2		
140		5.7	4.9		
145		5.3	4.6		
155		4.7			

75,000 lbs standard counterweight and 38,600 lbs carbody counterweight

TLT 11943097 - M00000 V9. Above load charts are for reference only. For actual lift duty please refer to load chart in operator's cabin or manual. Otherwise we recommend you to plan your lifting job using Crane Planner 2.0.



# Load capacities with luffing jib

Load capacities in 1000 lbs, 56 ft main boom 45°, standard counterweight

Radius [ft]	Jib length [ft]								
	74	104	123	142	161				
107.5	13.8								
115	12.7								
135		9.5							
145		8.5							
147			7.9						
165			6.5	6.1					
180				5.1	4.7				
185				4.8	4.5				

75,000 lbs standard counterweight and 38,600 lbs carbody counterweight

Load capacities in 1000 lbs, 76 ft main boom 45°, standard counterweight

Radius [ft]	Jib length [ft]							
	74	104	123					
121.4	10.1							
130	9.1							
150		6.7						
160		5.9						
165			5.2					
175			4.6					

75,000 lbs standard counterweight and 38,600 lbs carbody counterweight

Load capacities in 1000 lbs, 95 ft main boom 45°, standard counterweight

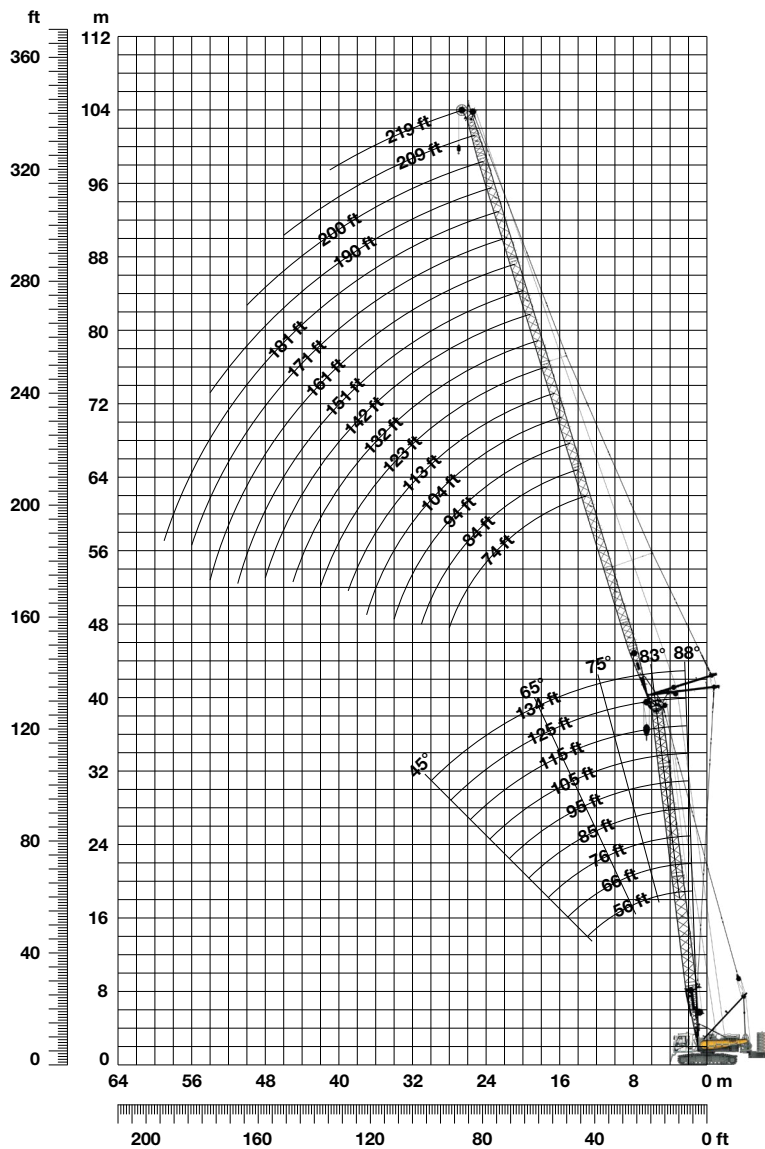
Radius [ft]	Jib length [ft]								
	74								
135.3	7.0								
140	6.7								
145	6.3								

75,000 lbs standard counterweight and 38,600 lbs carbody counterweight

TLT 11943097 - M00000 V9. Above load charts are for reference only. For actual lift duty please refer to load chart in operator's cabin or manual. Otherwise we recommend you to plan your lifting job using Crane Planner 2.0.

# Luffing jib 1309.xx

Jib lengths 74-219 ft, swinging counterweight 90°



## Jib configuration 1309.xx

Jib section	Amount of jib sections															
	1	1	1	1	1	1	1	1	1	1	1	1	1	1	1	1
Jib foot 18 ft	1															
Jib section 10 ft		1														
Jib section 20 ft			1													
Jib section 38 ft	1	1	1	1	2	2	2	2	3	3	3	3	4	4	4	4
Jib head 18 ft	1	1	1	1	1	1	1	1	1	1	1	1	1	1	1	1
<b>Jib length [ft]</b>	<b>74</b>	<b>84</b>	<b>94</b>	<b>104</b>	<b>113</b>	<b>123</b>	<b>132</b>	<b>142</b>	<b>151</b>	<b>161</b>	<b>171</b>	<b>181</b>	<b>190</b>	<b>200</b>	<b>209</b>	<b>219</b>

Actual lengths of boom sections are metric (e.g. 3 m, 5.5 m, 6 m, 11.7 m). The figures shown above are approximate conversions to feet. For main boom configuration please refer to the table on page 10.

# Load capacities with luffing jib

**Load capacities in 1000 lbs, 56 ft main boom 88°, swinging counterweight**

Radius [ft]	Jib length [ft]							
	74	104	123	142	161	181	200	219
43.3					32.7			
45				38.9	32.8			
50				37.2	31.9	25.5		
55		39.4	37.5	34.4	30.9	24.8	21.3	
60		36.5	34.5	32.4	29.2	24.3	20.8	16.9
65	35.3	33.5	32.1	29.9	27.8	23.6	20.4	16.4
70	32.7	31.1	30.0	27.9	26.2	23.0	19.7	16.1
80	27.0	27.0	26.0	24.7	23.3	21.2	18.7	15.2
105		18.6	18.7	18.4	17.5	16.5	15.5	13.2
125			14.4	14.6	14.3	13.5	12.6	11.4
145				11.6	11.8	11.0	10.5	9.5
165					5.2	9.3	8.5	7.8
180						8.1	7.2	6.7
200							5.4	5.5
220								4.5

75,000 lbs swinging counterweight 90° and 38,600 lbs carbody counterweight

**Load capacities in 1000 lbs, 76 ft main boom 88°, swinging counterweight**

Radius [ft]	Jib length [ft]							
	74	104	123	142	161	181	200	219
40.1					36.7			
45					39.4	35.1	30.0	
50					39.2	36.4	33.2	29.1
55					36.1	34.1	30.9	28.2
60					36.1	34.1	30.9	28.2
65					36.1	34.1	30.9	28.2
70	36.3	33.8	31.6	29.3	26.4	22.7	19.2	15.8
80	31.2	29.2	27.9	25.7	23.8	21.0	18.0	15.1
100	25.9	25.5	24.5	23.1	21.2	19.3	17.0	14.3
110		18.9	18.7	18.6	17.2	15.9	14.4	12.5
125		7.8	16.2	16.3	15.7	14.3	13.3	11.7
145			13.5	13.4	13.3	12.6	11.5	10.2
165				10.7	10.8	10.3	9.7	8.6
180					4.8	8.7	8.1	7.1
200						7.7	7.2	6.1
210							5.9	5.1
220								4.6

75,000 lbs swinging counterweight 90° and 38,600 lbs carbody counterweight

**Load capacities in 1000 lbs, 95 ft main boom 88°, swinging counterweight**

Radius [ft]	Jib length [ft]							
	74	104	123	142	161	181	200	219
36.6					39.2			
45					39.9	36.7	31.4	26.4
50					37.2	34.1	30.0	25.9
55					34.6	32.4	28.2	24.8
60	38.2	34.6	32.4	26.9	23.7	20.4	17.3	14.7
70	29.0	27.6	26.8	24.1	21.7	18.9	16.3	13.9
80	24.3	23.8	22.8	21.8	19.6	17.6	15.6	13.1
90		20.2	19.9	19.0	17.9	16.1	14.4	12.4
110		15.1	15.2	14.9	14.4	13.5	12.4	11.0
125			12.6	12.3	12.2	11.9	10.9	9.8
145				10.0	10.1	9.8	9.4	8.3
165					8.2	8.3	7.8	7.0
185						6.9	6.7	5.8
200							6.0	5.1
215								4.5

75,000 lbs swinging counterweight 90° and 38,600 lbs carbody counterweight

**Load capacities in 1000 lbs, 115 ft main boom 88°, swinging counterweight**

Radius [ft]	Jib length [ft]							
	74	104	123	142	161	181	200	219
37.3					33.4			
40					38.3	33.4		
45					41.8	35.7	31.7	27.4
50					38.8	33.6	29.6	26.1
55					35.2	31.3	28.2	24.9
60					32.3	29.5	26.4	23.9
70					26.8	24.9	23.7	21.6
80					22.8	21.5	20.5	19.7
110					14.2	14.0	13.5	12.9
125						11.8	11.4	11.1
145							9.3	9.2
165								7.6
185								6.3
200								5.6
215								4.6

75,000 lbs swinging counterweight 90° and 38,600 lbs carbody counterweight

**Load capacities in 1000 lbs, 125 ft main boom 88°, swinging counterweight**

Radius [ft]	Jib length [ft]							
	74	104	123	142	161	181	200	219
33.8								
40								
45								
50								
55								
60								
70								
80								
110								
130								
145								
165								
185								
200								
210								

75,000 lbs swinging counterweight 90° and 38,600 lbs carbody counterweight

**Load capacities in 1000 lbs, 135 ft main boom 88°, swinging counterweight**

Radius [ft]	Jib length [ft]							
	74	104	123	142	161	181	200	219
34.1								
40								
45								
50								
55								
60								
70								
80								
90								
110								
120								
125								
145								
165								
185								

75,000 lbs swinging counterweight 90° and 38,600 lbs carbody counterweight

TLT 11943097 - M00000 V9. Above load charts are for reference only. For actual lift duty please refer to load chart in operator's cabin or manual. Otherwise we recommend you to plan your lifting job using Crane Planner 2.0.

# Load capacities with luffing jib

**Load capacities in 1000 lbs, 56 ft main boom 83°, swinging counterweight**

Radius [ft]	Jib length [ft]							
	74	104	123	142	161	181	200	219
45	58.5							
50	52.4	49.6						
55	46.6	45.1	43.1					
60	41.9	40.9	39.6	36.7				
65	38.0	37.5	36.1	34.0	31.0			
70	34.7	34.2	33.6	31.8	29.4	23.7		
75	31.9	31.4	31.1	29.4	27.9	23.2	20.0	
80	29.4	29.0	28.7	27.6	26.0	22.7	19.7	15.7
85	27.2	26.9	26.6	25.9	24.5	21.9	19.3	15.4
115		11.6	18.0	17.7	17.4	16.3	15.7	13.7
130			15.3	15.0	14.6	14.2	13.2	12.0
150				12.0	11.9	11.5	10.9	10.0
170					6.2	9.4	9.0	8.2
185						8.1	7.7	7.1
205							5.9	5.9

75,000 lbs swinging counterweight 90° and 38,600 lbs carbody counterweight

**Load capacities in 1000 lbs, 76 ft main boom 83°, swinging counterweight**

Radius [ft]	Jib length [ft]							
	74	104	123	142	161	181	200	219
38.9	62.0							
50	49.8	45.9						
55	45.5	42.2	39.6					
60	41.4	38.8	36.7	33.3				
65	37.6	36.2	34.2	31.7	28.3			
70	34.3	33.5	31.7	29.8	27.3	22.3		
80	29.1	28.7	27.9	26.2	24.5	21.6	18.5	
85	27.0	26.6	26.1	24.9	23.1	21.1	18.2	14.6
115		18.0	17.8	17.4	17.0	15.6	14.6	12.6
135			7.7	14.0	13.6	12.9	12.1	10.8
150				12.0	11.7	11.1	10.6	9.5
170					9.6	9.2	8.8	7.9
190						7.6	7.3	6.5
205							6.3	5.7
225								4.6

75,000 lbs swinging counterweight 90° and 38,600 lbs carbody counterweight

**Load capacities in 1000 lbs, 95 ft main boom 83°, swinging counterweight**

Radius [ft]	Jib length [ft]							
	74	104	123	142	161	181	200	219
41.3	57.5							
50	48.6	43.7						
60	40.7	38.3	35.7					
65	37.1	35.3	33.8	30.4				
70	33.9	32.8	31.5	28.8	26.0			
75	31.1	30.6	29.4	27.4	24.8	20.5		
80	28.7	28.2	27.5	25.8	23.9	20.1	17.2	
85	26.6	26.2	25.8	24.5	22.6	19.7	16.9	13.6
90	24.7	24.4	24.0	23.2	21.5	19.1	16.7	13.5
115		17.8	17.5	17.1	16.7	15.5	14.3	12.1
135			14.0	13.7	13.4	12.8	12.0	10.6
155				11.2	10.9	10.5	9.8	9.1
170					9.4	9.0	8.5	7.7
190						7.4	7.0	6.3
210							5.8	5.0

75,000 lbs swinging counterweight 90° and 38,600 lbs carbody counterweight

**Load capacities in 1000 lbs, 115 ft main boom 83°, swinging counterweight**

Radius [ft]	Jib length [ft]							
	74	104	123	142	161	181	200	219
43.7	50.4							
55	41.9	37.8						
60	38.6	36.2	31.9					
65	35.7	33.5	30.9	26.6				
70	33.2	31.1	29.8	26.1	22.4			
75	30.7	29.0	27.9	25.5	22.2	18.5		
85	26.2	25.5	24.5	23.4	21.1	17.9	15.2	
90	24.4	24.0	23.0	22.0	20.3	17.6	14.9	12.4
100		21.0	20.5	19.5	18.7	16.6	14.4	12.0
120		16.5	16.2	15.8	15.0	14.1	13.1	10.9
140			6.9	12.8	12.2	11.4	10.7	9.8
155				10.9	10.6	9.9	9.1	8.4
175					8.7	8.1	7.5	6.7
195						6.8	6.1	5.4
210							5.2	4.6

75,000 lbs swinging counterweight 90° and 38,600 lbs carbody counterweight

**Load capacities in 1000 lbs, 125 ft main boom 83°, swinging counterweight**

Radius [ft]	Jib length [ft]							
	74	104	123	142	161	181	200	219
44.9	43.1							
55	39.3	33.2						
60	37.4	31.8	28.2					
65	34.7	30.5	27.4	23.8				
75	30.2	28.0	25.3	22.5	19.7			
80	28.1	26.4	24.3	21.8	19.1	16.5		
85	26.0	24.8	23.3	21.0	18.6	16.1	13.7	
90	24.2	23.3	22.3	20.4	18.0	15.7	13.5	11.1
120		16.3	16.1	15.3	14.5	13.1	11.7	9.8
140			12.6	12.6	11.9	11.0	10.3	8.8
160				4.9	9.8	9.0	8.4	7.6
175					8.6	7.8	7.2	6.4
195						6.5	5.8	5.1
205							5.2	4.5
210								5.0

75,000 lbs swinging counterweight 90° and 38,600 lbs carbody counterweight

**Load capacities in 1000 lbs, 135 ft main boom 83°, swinging counterweight**

Radius [ft]	Jib length [ft]							
	74	104	123	142	161	181		
46.1	38.2							
55	35.4	29.4						
65	32.0	27.3	24.7					
70	30.6	26.2	23.8	20.7				
75	29.1	25.2	22.9	20.0	17.7			
80	27.5	23.9	22.0	19.4	17.1	14.7		
90	24.0	22.0	20.1	18.0	16.0	13.9		
95	22.4	20.8	19.3	17.4	15.5	13.6		
110		17.9	16.8	15.5	14.1	12.5		
120		15.8	15.3	14.3	13.2	11.6		
130			13.8	13.1	12.3	10.9		
140			12.3	12.1	11.4	10.3		
160				9.8	9.5	8.7		
175					8.3	7.5		
195						6.2		

75,000 lbs swinging counterweight 90° and 38,600 lbs carbody counterweight

TLT 11943097 - M00000 V9. Above load charts are for reference only. For actual lift duty please refer to load chart in operator's cabin or manual. Otherwise we recommend you to plan your lifting job using Crane Planner 2.0.

# Load capacities with luffing jib

**Load capacities in 1000 lbs, 56 ft main boom 75°, swinging counterweight**

Radius [ft]	Jib length [ft]							
	74	104	123	142	161	181	200	219
53.9	45.7							
70	33.2	32.6						
75	30.5	29.9	29.5					
85	26.1	25.6	25.3	24.8				
90	24.3	23.9	23.5	23.1				
95		22.3	21.9	21.5	21.1			
100		20.9	20.5	20.1	19.7	19.3		
110		18.4	18.1	17.7	17.4	16.9	16.4	
115		17.4	17.1	16.7	16.3	15.9	15.5	13.3
120		16.4	16.1	15.8	15.4	15.0	14.6	13.3
140			11.7	12.7	12.3	11.9	11.6	11.1
155				10.9	10.6	10.2	9.8	9.4
175					8.7	8.3	8.0	7.6
195						6.8	6.5	6.1
215							5.3	4.9

75,000 lbs swinging counterweight 90° and 38,600 lbs carbody counterweight

**Load capacities in 1000 lbs, 76 ft main boom 75°, swinging counterweight**

Radius [ft]	Jib length [ft]							
	74	104	123	142	161	181	200	219
59	39.6							
75	29.5	28.9						
80	27.3	26.6	26.2					
90	23.6	23.0	22.6	22.2				
95	22.0	21.5	21.1	20.7				
100		20.1	19.8	19.3	18.8			
105		18.9	18.6	18.1	17.7	16.8		
115		16.8	16.4	16.0	15.6	15.0	14.2	
125		14.9	14.7	14.3	13.9	13.4	12.6	11.7
145			10.7	11.5	11.2	10.8	10.2	9.4
165				9.3	9.1	8.7	8.2	7.5
180					7.9	7.5	7.1	6.3
200						6.1	5.7	5.0
210							5.2	4.5
220							4.6	

75,000 lbs swinging counterweight 90° and 38,600 lbs carbody counterweight

**Load capacities in 1000 lbs, 95 ft main boom 75°, swinging counterweight**

Radius [ft]	Jib length [ft]							
	74	104	123	142	161	181	200	219
64.1	34.5							
80	26.4	25.6						
85	24.5	23.8	22.9					
95	21.2	20.7	20.3	19.3				
100	19.9	19.3	19.0	18.1				
105		18.2	17.8	17.1	16.2			
110		17.1	16.7	16.2	15.3	14.3		
120		15.2	14.9	14.4	13.7	12.8	12.0	
130		13.6	13.3	12.9	12.3	11.5	10.7	9.9
140			11.9	11.6	11.1	10.3	9.6	8.8
150			10.7	10.4	10.1	9.3	8.6	7.8
170				8.4	8.2	7.6	6.9	6.1
185					7.0	6.5	5.8	5.1
195						5.9	5.2	4.5
205						5.3	4.6	

75,000 lbs swinging counterweight 90° and 38,600 lbs carbody counterweight

**Load capacities in 1000 lbs, 115 ft main boom 75°, swinging counterweight**

Radius [ft]	Jib length [ft]							
	74	104	123	142	161	181	200	219
69.2	29.4							
85	23.5	22.0						
90	21.9	20.6	19.6					
100	19.1	18.4	17.4	16.4				
105	17.9	17.3	16.5	15.5				
110		16.3	15.6	14.6	13.8			
115		15.4	14.8	13.8	13.0	12.0		
125		13.7	13.3	12.4	11.6	10.8	10.0	
135		12.2	12.0	11.2	10.4	9.6	8.8	8.0
150			10.2	9.7	8.9	8.1	7.4	6.6
155				9.7	9.2	8.5	7.7	6.2
175					6.7	7.0	6.2	5.5
180						6.6	5.9	5.2
190						6.0	5.3	4.6
205							4.4	

75,000 lbs swinging counterweight 90° and 38,600 lbs carbody counterweight

**Load capacities in 1000 lbs, 125 ft main boom 75°, swinging counterweight**

Radius [ft]	Jib length [ft]							
	74	104	123	142	161	181	200	219
71.7	27.1							
85	22.8	20.9						
95	20.0	18.6	17.6					
105	17.5	16.6	15.7	14.7				
110	16.4	15.7	14.8	13.9	13.0			
120		14.1	13.3	12.4	11.6	10.7		
125		13.3	12.6	11.8	11.0	10.1	9.2	
135		11.9	11.4	10.6	9.8	9.0	8.2	7.4
140		8.2	10.9	10.1	9.3	8.5	7.7	6.9
150			9.9	9.1	8.4	7.6	6.8	6.0
155			9.4	8.7	7.9	7.1	6.4	5.6
170				7.5	6.8	6.0	5.3	4.6
175				7.2	6.5	5.7	5.0	
180					6.1	5.4	4.7	
195					5.1	4.5		

75,000 lbs swinging counterweight 90° and 38,600 lbs carbody counterweight

**Load capacities in 1000 lbs, 135 ft main boom 75°, swinging counterweight**

Radius [ft]	Jib length [ft]							
	74	104	123	142	161	181		
74.2	25.0							
90	20.4	18.7						
95	19.2	17.6	16.6					
105	17.1	15.7	14.8	13.8				
110	16.0	14.9	14.0	13.1				
115		14.1	13.3	12.3	11.5			
120		13.4	12.6	11.7	10.8	9.9		
130		12.1	11.3	10.5	9.7	8.8		
140		11.0	10.3	9.4	8.7	7.8		
150			9.3	8.5	7.8	7.0		
160			8.5	7.7	7.0	6.2		
170				7.0	6.3	5.5		
180				6.0	5.6	4.9		
185					5.3	4.6		
195					4.8			

75,000 lbs swinging counterweight 90° and 38,600 lbs carbody counterweight

TLT 11943097 - M00000 V9. Above load charts are for reference only. For actual lift duty please refer to load chart in operator's cabin or manual. Otherwise we recommend you to plan your lifting job using Crane Planner 2.0.

# Load capacities with luffing jib

Load capacities in 1000 lbs, 56 ft main boom 65°, swinging counterweight

Radius [ft]	Jib length [ft]							
	74	104	123	142	161	181	200	219
74.1	29.2							
95	21.4	20.8						
100	20.1	19.5						
105		18.3	17.9					
115		16.3	15.9	15.5				
125		14.5	14.2	13.8	13.3			
130		13.7	13.4	13.0	12.6			
135			12.7	12.3	11.9	11.4		
150			10.9	10.5	10.2	9.7	9.3	
160				9.5	9.2	8.7	8.4	7.7
165				9.1	8.7	8.3	7.9	7.3
180					7.5	7.1	6.7	6.1
185					7.1	6.8	6.4	5.8
205						5.5	5.1	4.6
215							4.6	

75,000 lbs swinging counterweight 90° and 38,600 lbs carbody counterweight

Load capacities in 1000 lbs, 76 ft main boom 65°, swinging counterweight

Radius [ft]	Jib length [ft]							
	74	104	123	142	161	181	200	219
82.4	24.1							
100	18.9	18.2						
105	17.8	17.1						
110	16.7	16.1	15.6					
125		13.5	13.2	12.7				
135		12.1	11.8	11.4	10.9			
140		11.5	11.2	10.8	10.3			
145			10.6	10.2	9.8	9.2		
155			9.6	9.2	8.8	8.2	7.5	
170				7.9	7.5	7.0	6.3	5.5
175				7.5	7.1	6.6	6.0	5.2
185					6.4	6.0	5.3	4.5
195					5.8	5.4	4.7	
200						5.1	4.4	
210							4.6	

75,000 lbs swinging counterweight 90° and 38,600 lbs carbody counterweight

Load capacities in 1000 lbs, 95 ft main boom 65°, swinging counterweight

Radius [ft]	Jib length [ft]						
	74	104	123	142	161	181	200
90.7	20.0						
110	15.6	14.9					
120	13.8	13.2	12.8				
130		11.8	11.4	10.7			
145		10.1	9.7	9.2	8.4		
155			8.7	8.3	7.6	6.7	
165			7.9	7.5	6.8	6.0	5.3
170				7.1	6.4	5.6	4.9
175				6.7	6.1	5.3	4.6
185				6.0	5.5	4.7	
190					5.2	4.4	
200					4.7		

75,000 lbs swinging counterweight 90° and 38,600 lbs carbody counterweight

Load capacities in 1000 lbs, 115 ft main boom 65°, swinging counterweight

Radius [ft]	Jib length [ft]					
	74	104	123	142	161	181
99	16.4					
120	12.7	11.8				
125	12.0	11.2				
130		10.6	9.8			
140		9.6	8.8	8.0		
150		8.6	8.0	7.1	6.3	
155		8.1	7.6	6.7	6.0	
160			7.2	6.4	5.6	4.8
165			6.8	6.0	5.3	4.5
175			6.2	5.4	4.7	
180				5.1		
190				4.6		

75,000 lbs swinging counterweight 90° and 38,600 lbs carbody counterweight

Load capacities in 1000 lbs, 125 ft main boom 65°, swinging counterweight

Radius [ft]	Jib length [ft]				
	74	104	123	142	161
103.2	14.7				
125	11.5	10.3			
130	10.8	9.7			
135		9.2	8.4		
145		8.3	7.6	6.7	
155		7.5	6.8	6.0	5.2
160		7.1	6.4	5.6	4.9
165			6.1	5.3	4.6
175			5.5	4.7	
180				4.4	

75,000 lbs swinging counterweight 90° and 38,600 lbs carbody counterweight

Load capacities in 1000 lbs, 135 ft main boom 65°, swinging counterweight

Radius [ft]	Jib length [ft]			
	74	104	123	142
107.3	12.9			
125	10.7	9.2		
130	10.1	8.8		
135	9.6	8.3	7.4	
150		7.1	6.3	5.5
160		6.4	5.6	4.8
165		6.0	5.3	4.5
170			5.0	
175			4.7	
180			4.5	

75,000 lbs swinging counterweight 90° and 38,600 lbs carbody counterweight

TLT 11943097 - M00000 V9. Above load charts are for reference only. For actual lift duty please refer to load chart in operator's cabin or manual. Otherwise we recommend you to plan your lifting job using Crane Planner 2.0.

# Load capacities with luffing jib

Load capacities in 1000 lbs, 56 ft main boom 45°, swinging counterweight

Radius [ft]	Jib length [ft]					
	74	104	123	142	161	181
107.5	16.2					
115	14.9					
135		11.4				
145		10.2				
147			9.6			
165			8.0	7.6		
180				6.5	6.1	
185				6.2	5.8	
195					5.2	4.7
200					4.9	4.5

75,000 lbs swinging counterweight 90° and 38,600 lbs carbody counterweight

Load capacities in 1000 lbs, 76 ft main boom 45°, swinging counterweight

Radius [ft]	Jib length [ft]			
	74	104	123	142
121.4	12.2			
130	11.1			
150		8.3		
160		7.5		
165			6.7	
170			6.4	
180			5.7	5.3
185				5.0
190				4.7
195				4.5

75,000 lbs swinging counterweight 90° and 38,600 lbs carbody counterweight

Load capacities in 1000 lbs, 95 ft main boom 45°, swinging counterweight

Radius [ft]	Jib length [ft]		
	74	104	123
135.3	8.9		
145	8.0		
160		6.1	
170		5.5	
175		5.2	4.6

75,000 lbs swinging counterweight 90° and 38,600 lbs carbody counterweight

Load capacities in 1000 lbs, 115 ft main boom 45°, swinging counterweight

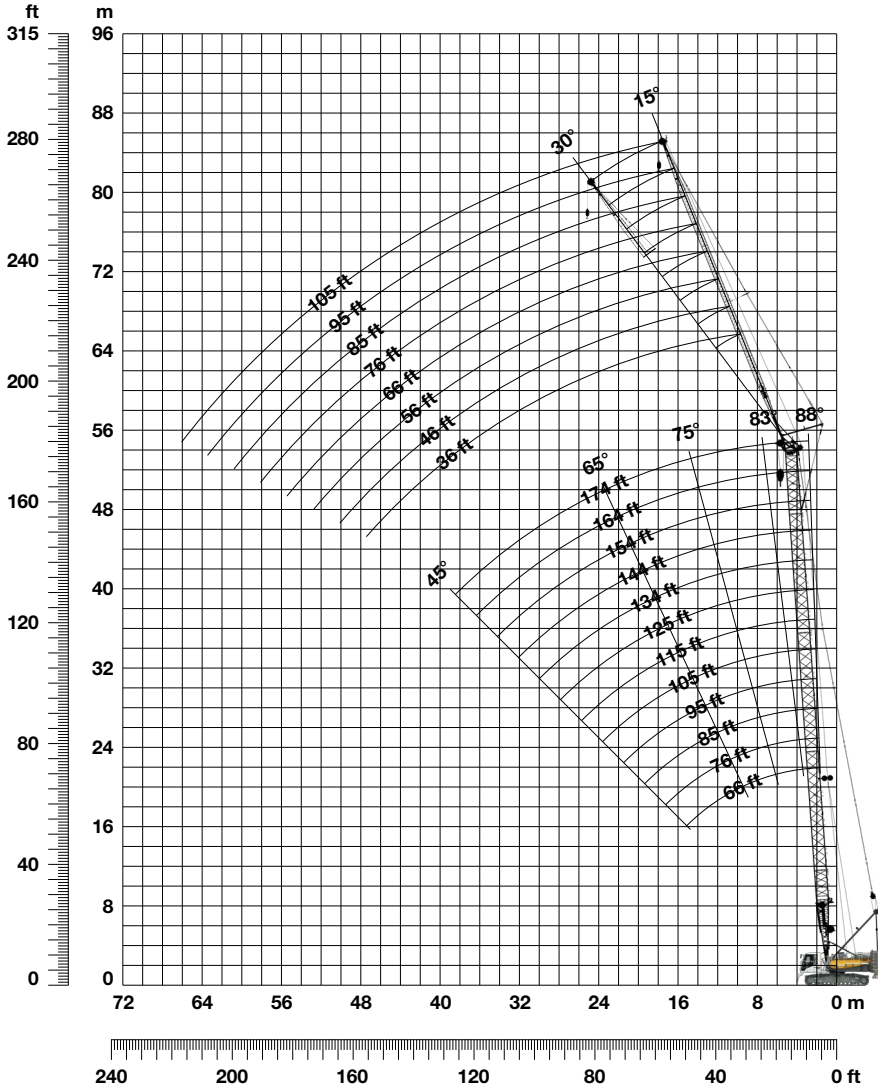
Radius [ft]	Jib length [ft]			
	74			
149.3	6.0			
150	6.0			
155	5.7			
160	5.3			

75,000 lbs swinging counterweight 90° and 38,600 lbs carbody counterweight

TLT 11943097 - M00000 V9. Above load charts are for reference only. For actual lift duty please refer to load chart in operator's cabin or manual. Otherwise we recommend you to plan your lifting job using Crane Planner 2.0.

# Fixed jib 0806.xx

## Jib lengths 36-105 ft, standard counterweight



### Jib configuration 0806.xx

Jib section	Amount of jib sections							
	36	46	56	66	76	85	95	105
Jib foot 18 ft	1	1	1	1	1	1	1	1
Jib section 10 ft		1		1		1		1
Jib section 20 ft			1	1	2	2	3	3
Jib head 18 ft	1	1	1	1	1	1	1	1
<b>Jib length [ft]</b>	<b>36</b>	<b>46</b>	<b>56</b>	<b>66</b>	<b>76</b>	<b>85</b>	<b>95</b>	<b>105</b>

Actual lengths of boom sections are metric (e.g. 3 m, 5.5 m, 6 m). The figures shown above are approximate conversions to feet. For main boom configuration please refer to the table on page 10.



# Load capacities with fixed jib 15°

**Load capacities in 1000 lbs – 66 ft main boom**

Radius [ft]	Jib length [ft]			
	36	66	85	105
16.6	50.2			
30	46.6	24.6		
40	43.9	22.8	16.6	
50	41.2	21.3	15.6	11.4
65	32.0	19.5	14.3	10.3
80	24.3	17.9	13.2	9.4
95	19.2	16.9	12.4	8.7
110		16.3	11.8	8.1
125		13.6	11.3	7.5
140			11.1	7.1
145			11.0	7.0
165				6.8

75,000 lbs standard counterweight and 38,600 lbs carbody counterweight

**Load capacities in 1000 lbs – 85 ft main boom**

Radius [ft]	Jib length [ft]			
	36	66	85	105
17.3	49.0			
30	46.8	24.6		
40	44.8	23.1	16.7	
50	43.0	21.7	15.8	11.4
65	31.5	20.0	14.6	10.5
80	23.9	18.6	13.5	9.7
95	18.7	17.5	12.8	9.0
120		14.0	11.8	8.0
145		10.3	10.7	7.3
150			10.1	7.2
160			9.0	7.0
180				6.9

75,000 lbs standard counterweight and 38,600 lbs carbody counterweight

**Load capacities in 1000 lbs – 95 ft main boom**

Radius [ft]	Jib length [ft]			
	36	66	85	105
17.7	47.3			
30	45.7	24.1		
50	42.2	21.5	15.4	11.1
80	23.6	18.7	13.4	9.6
105	15.9	17.0	12.2	8.5
110	14.8	15.7	12.1	8.3
120	12.9	13.7	11.8	8.0
125		12.9	11.6	7.8
130		12.1	11.5	7.7
150		9.4	9.9	7.2
170			7.8	6.9
190				6.5

75,000 lbs standard counterweight and 38,600 lbs carbody counterweight

**Load capacities in 1000 lbs – 105 ft main boom**

Radius [ft]	Jib length [ft]			
	36	66	85	105
18	46.5			
30	45.2	23.9		
40	43.5	22.8	16.0	
50	42.0	21.7	15.4	11.0
70	28.0	19.7	14.1	10.0
95	18.2	17.9	12.8	8.9
120	12.6	13.5	11.9	8.1
135		11.1	11.4	7.7
155		9.2	9.1	7.2
160		8.1	8.5	7.1
180			6.7	6.9
200				5.5

75,000 lbs standard counterweight and 38,600 lbs carbody counterweight

**Load capacities in 1000 lbs – 125 ft main boom**

Radius [ft]	Jib length [ft]			
	36	66	85	105
18.7	45.4			
40	42.4	22.6	15.3	
50	41.1	21.8	14.8	10.6
70	27.6	20.1	14.0	10.0
90	19.2	18.7	13.1	9.3
110	14.0	15.0	12.3	8.6
130	10.5	11.4	11.7	8.0
150		8.7	9.1	7.6
170		6.7	7.1	7.2
175		6.3	6.7	7.0
195			5.1	5.4
215				4.2

75,000 lbs standard counterweight and 38,600 lbs carbody counterweight

**Load capacities in 1000 lbs – 144 ft main boom**

Radius [ft]	Jib length [ft]			
	36	66	85	105
19.4	40.6			
40	39.0	21.6	13.9	
50	38.3	21.2	13.6	9.7
70	27.1	19.9	13.0	9.3
90	18.7	18.7	12.4	8.9
110	13.5	14.5	12.0	8.4
130	9.9	10.8	11.3	7.9
155	6.8	7.7	8.1	7.4
190		4.6	5.0	5.3
210			3.6	4.0
220				3.4
235				2.6

75,000 lbs standard counterweight and 38,600 lbs carbody counterweight

**Load capacities in 1000 lbs – 164 ft main boom**

Radius [ft]	Jib length [ft]			
	36	66	85	105
20.1	37.4			
40	36.2	19.7	12.8	
50	35.5	19.4	12.6	9.0
90	18.2	17.7	11.7	8.4
110	13.0	14.0	11.4	8.1
135	8.7	9.6	10.1	7.7
170	4.9	5.7	6.1	6.5
185		4.5	4.9	5.2
205		3.1	3.5	3.8
210		2.8	3.2	3.5
230			2.1	2.4
237				2.0

75,000 lbs standard counterweight and 38,600 lbs carbody counterweight

**Load capacities in 1000 lbs – 174 ft main boom**

Radius [ft]	Jib length [ft]			
	36	66	85	105
20.4	34.1			
40	33.0	17.9		
50	32.4	17.7	11.7	8.3
85	19.6	16.8	11.0	7.8
105	13.8	14.9	10.7	7.6
125	9.9	10.9	10.3	7.4
145	7.1	8.0	8.5	7.2
165	5.1	5.9	6.3	6.7
200		3.1	3.5	3.9
220			2.3	2.7
225			2.1	2.4
230				2.1

75,000 lbs standard counterweight and 38,600 lbs carbody counterweight

**Load capacities in 1000 lbs – 194 ft main boom**

Radius [ft]	Jib length [ft]			
	36	46	56	66
21.1	28.7			
30	28.4	22.6	18.1	
40	27.9	22.3	17.7	15.1
70	25.2	21.3	17.1	14.7
100	14.5	14.9	15.3	14.4
135	7.9	8.2	8.6	8.9
150	6.0	6.3	6.7	6.9
170	4.1	4.3	4.6	4.9
190	2.5	2.8	3.1	3.3
200		2.1	2.4	2.6
205			2.1	2.3
209				2.0

75,000 lbs standard counterweight and 38,600 lbs carbody counterweight

TLT 11943097 - M236250. Above load charts are for reference only. For actual lift duty please refer to load chart in operator's cabin or manual. Otherwise we recommend you to plan your lifting job using Crane Planner 2.0.

# Load capacities with fixed jib 30°

Load capacities in 1000 lbs – 66 ft main boom

Radius [ft]	Jib length [ft]			
	36	66	85	105
25.4	42.7			
50	37.7	19.0		
60	34.7	18.1	13.7	
70	29.5	17.6	13.2	9.3
80	24.6	17.2	12.8	8.9
90	21.0	16.4	12.3	8.5
95	19.4	16.2	12.2	8.4
100	18.0	15.7	11.9	8.2
110		14.9	11.5	7.8
120		14.3	11.0	7.6
145			10.0	7.2
165				7.1

75,000 lbs standard counterweight and 38,600 lbs carbody counterweight

Load capacities in 1000 lbs – 85 ft main boom

Radius [ft]	Jib length [ft]			
	36	66	85	105
26.1	42.1			
50	37.9	19.1		
60	35.2	18.3	13.7	
70	29.1	17.7	13.3	9.4
110	15.2	15.8	11.8	8.1
130		12.6	11.0	7.6
135		11.9	10.8	7.5
140		11.1	10.5	7.4
145		10.4	10.3	7.4
155			9.8	7.3
165			8.6	7.2
185				7.2

75,000 lbs standard counterweight and 38,600 lbs carbody counterweight

Load capacities in 1000 lbs – 95 ft main boom

Radius [ft]	Jib length [ft]			
	36	66	85	105
26.4	41.1			
50	37.5	19.0		
60	34.7	18.3	13.6	
70	29.9	17.7	13.2	9.2
90	20.3	17.1	12.5	8.5
110	15.0	16.1	11.9	8.0
130		12.4	11.2	7.6
140		10.9	10.8	7.4
150		9.6	10.2	7.3
155		9.0	9.6	7.2
175			7.4	7.1
190				6.6

75,000 lbs standard counterweight and 38,600 lbs carbody counterweight

Load capacities in 1000 lbs – 105 ft main boom

Radius [ft]	Jib length [ft]			
	36	66	85	105
26.7	40.8			
50	37.1	19.0		
60	34.5	18.4	13.6	
70	28.7	17.8	13.2	9.1
90	20.1	17.2	12.5	8.6
110	14.8	16.0	12.0	8.1
135		11.5	11.2	7.6
150		9.4	10.0	7.4
160		8.3	8.8	7.3
165			8.3	7.2
180			6.8	7.1
200				5.7

75,000 lbs standard counterweight and 38,600 lbs carbody counterweight

Load capacities in 1000 lbs – 125 ft main boom

Radius [ft]	Jib length [ft]			
	36	66	85	105
27.4	39.5			
50	36.4	18.8		
60	34.4	18.3	13.4	
75	25.7	17.6	12.9	8.9
100	16.8	17.0	12.3	8.4
125	11.5	12.7	11.7	7.9
150	8.0	9.1	9.6	7.5
170		6.9	7.5	7.3
180		5.9	6.5	7.3
185			6.1	6.6
200			4.9	5.4
220				3.9

75,000 lbs standard counterweight and 38,600 lbs carbody counterweight

Load capacities in 1000 lbs – 144 ft main boom

Radius [ft]	Jib length [ft]			
	36	66	85	105
28.1	36.9			
50	35.5	18.5		
60	34.2	18.0	12.6	
75	25.3	17.4	12.4	8.6
100	16.3	16.6	12.1	8.2
120	11.9	13.2	11.7	7.9
145	8.2	9.3	9.9	7.5
165	6.0	7.0	7.6	7.3
190		4.7	5.3	5.8
205			4.2	4.6
215			3.4	4.0
235				2.7

75,000 lbs standard counterweight and 38,600 lbs carbody counterweight

Load capacities in 1000 lbs – 164 ft main boom

Radius [ft]	Jib length [ft]			
	36	66	85	105
28.8	34.2			
50	31.9	18.0		
60	29.4	17.7	11.9	
75	24.9	17.0	11.7	8.3
100	15.9	15.1	11.6	8.0
125	10.6	11.9	10.8	7.7
150	7.1	8.2	8.9	7.5
175	4.6	5.6	6.2	6.7
195		4.0	4.5	5.0
215		2.6	3.1	3.6
230			2.2	2.7
240				2.1

75,000 lbs standard counterweight and 38,600 lbs carbody counterweight

Load capacities in 1000 lbs – 174 ft main boom

Radius [ft]	Jib length [ft]			
	36	66	85	105
29.1	31.7			
50	30.5	17.4		
60	28.1	17.3	11.1	
75	24.7	16.6	11.1	7.9
95	17.0	15.2	11.0	7.8
120	11.2	12.6	10.5	7.6
145	7.5	8.6	9.3	7.4
170	4.8	5.8	6.5	6.9
190	3.2	4.1	4.7	5.2
220		2.0	2.6	3.1
230				2.5
238				2.0

75,000 lbs standard counterweight and 38,600 lbs carbody counterweight

Load capacities in 1000 lbs – 194 ft main boom

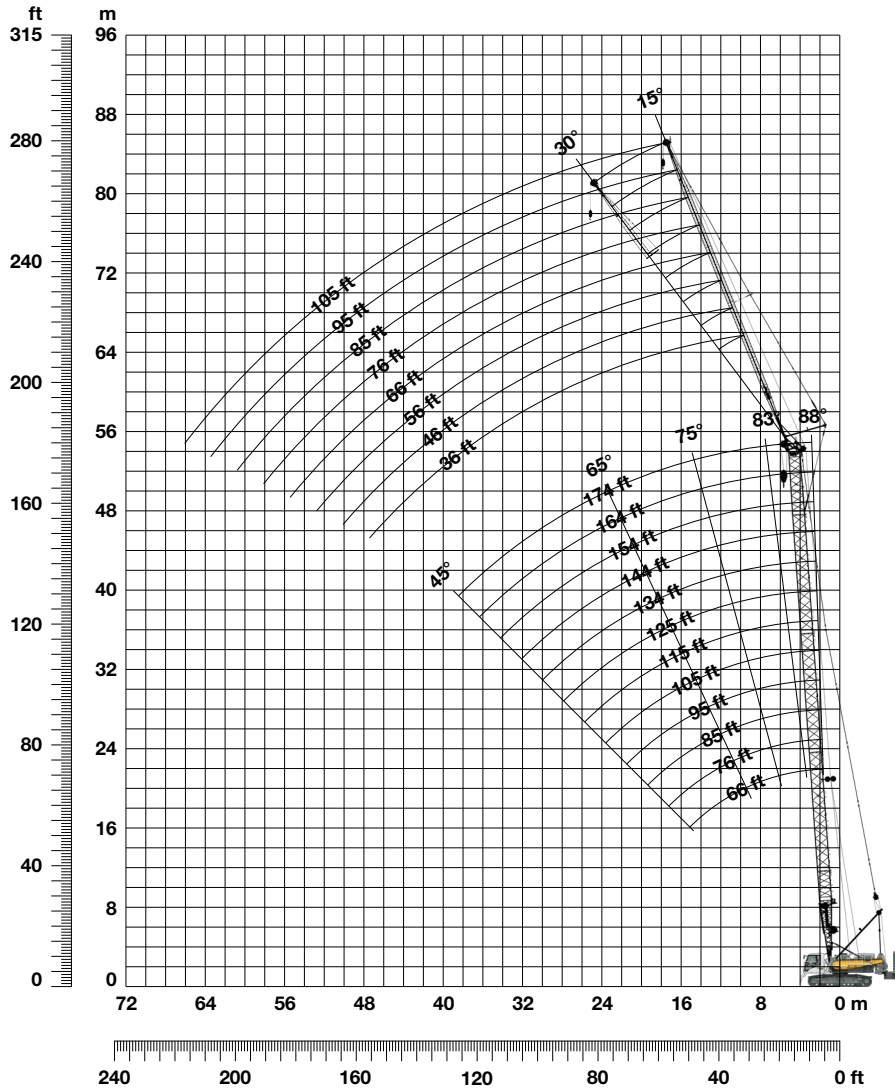
Radius [ft]	Jib length [ft]			
	36	46	56	66
29.8	27.3			
40	27.2	22.0		
50	27.0	22.0	17.6	
55	26.4	22.0	17.6	12.4
80	21.9	20.4	17.5	12.4
90	18.2	18.8	16.9	15.2
105	13.9	14.5	15.0	12.2
135	8.3	8.7	9.2	9.6
165	4.8	5.2	5.5	5.9
200		2.3	2.6	2.9
205			2.3	2.6
210				2.2

75,000 lbs standard counterweight and 38,600 lbs carbody counterweight

TLT 11943097 - M236250. Above load charts are for reference only. For actual lift duty please refer to load chart in operator's cabin or manual. Otherwise we recommend you to plan your lifting job using Crane Planner 2.0.

# Fixed jib 0806.xx

Jib lengths 36-105 ft, swinging counterweight 90°



## Jib configuration 0806.xx

Jib section	Amount of jib sections							
	36	46	56	66	76	85	95	105
Jib foot 18 ft	1	1	1	1	1	1	1	1
Jib section 10 ft		1		1	1	1		1
Jib section 20 ft			1	1	2	2	3	3
Jib head 18 ft	1	1	1	1	1	1	1	1
<b>Jib length [ft]</b>	<b>36</b>	<b>46</b>	<b>56</b>	<b>66</b>	<b>76</b>	<b>85</b>	<b>95</b>	<b>105</b>

Actual lengths of boom sections are metric (e.g. 3 m, 5.5 m, 6 m). The figures shown above are approximate conversions to feet. For main boom configuration please refer to the table on page 10.

# Load capacities with fixed jib 15°

**Load capacities in 1000 lbs – 66 ft main boom**

Radius [ft]	Jib length [ft]			
	36	66	85	105
55	39.9			
70	32.9	18.9	13.9	
75	30.1	18.4	13.5	9.8
95	22.0	16.9	12.4	8.7
105		16.5	12.0	8.3
125		15.5	11.3	7.5
135			11.1	7.2
140			11.1	7.1
145			11.0	7.0
150				7.0
155				6.9
165				6.8

75,000 lbs swinging counterweight 90° and 38,600 lbs carbody counterweight

**Load capacities in 1000 lbs – 85 ft main boom**

Radius [ft]	Jib length [ft]			
	36	66	85	105
50	43.0			
60	39.6	20.5		
65	35.7	20.0	14.6	
70	32.4	19.6	14.2	10.2
90	23.2	17.8	13.0	9.2
110	17.4	16.8	12.2	8.4
115	16.3	16.7	12.0	8.2
130		14.3	11.5	7.7
145		12.1	11.2	7.3
150			11.1	7.2
155			11.1	7.1
180				6.9

75,000 lbs swinging counterweight 90° and 38,600 lbs carbody counterweight

**Load capacities in 1000 lbs – 95 ft main boom**

Radius [ft]	Jib length [ft]			
	36	66	85	105
50	42.2			
60	39.4	20.5		
65	35.4	19.9	14.3	10.3
80	26.8	18.7	13.4	9.6
95	21.2	17.6	12.7	8.9
110	17.1	16.7	12.1	8.3
125		14.9	11.6	7.8
135		13.2	11.3	7.6
150		11.1	11.1	7.2
155			10.9	7.1
170			9.3	6.9
190				6.8

75,000 lbs swinging counterweight 90° and 38,600 lbs carbody counterweight

**Load capacities in 1000 lbs – 105 ft main boom**

Radius [ft]	Jib length [ft]			
	36	66	85	105
45	42.8			
55	41.4	21.2		
60	39.1	20.8	14.7	
65	35.2	20.2	14.4	10.3
75	29.0	19.3	13.8	9.8
90	22.6	18.2	13.0	9.1
110	16.9	17.1	12.2	8.4
130	13.0	13.8	11.6	7.8
140		12.3	11.3	7.6
160		9.7	10.1	7.1
180			8.1	6.9
200				6.8

75,000 lbs swinging counterweight 90° and 38,600 lbs carbody counterweight

**Load capacities in 1000 lbs – 125 ft main boom**

Radius [ft]	Jib length [ft]			
	36	66	85	105
45	41.9			
50	41.1	21.8		
55	40.3	21.3	14.6	
60	38.7	20.9	14.4	10.3
75	28.5	19.7	13.8	9.8
90	22.1	18.7	13.1	9.3
105	17.6	17.7	12.5	8.7
120	14.2	15.1	12.0	8.3
145	10.3	11.1	11.3	7.7
175		7.7	8.1	7.1
195			6.4	6.6
215				5.3

75,000 lbs swinging counterweight 90° and 38,600 lbs carbody counterweight

**Load capacities in 1000 lbs – 144 ft main boom**

Radius [ft]	Jib length [ft]			
	36	66	85	105
40	39.0			
50	38.3	21.2		
55	37.2	20.8	13.4	
60	35.8	20.4	13.3	9.5
90	21.6	18.7	12.4	8.9
110	15.8	16.6	12.0	8.4
120	13.7	14.6	11.7	8.2
150	9.1	9.9	10.3	7.5
165	7.4	8.2	8.6	7.2
190		5.9	6.3	6.6
215			4.5	4.8
235				3.6

75,000 lbs swinging counterweight 90° and 38,600 lbs carbody counterweight

**Load capacities in 1000 lbs – 164 ft main boom**

Radius [ft]	Jib length [ft]			
	36	66	85	105
35	36.5			
45	35.8	19.5		
50	35.5	19.4	12.6	
75	27.6	18.6	12.0	8.6
100	17.9	17.2	11.5	8.2
125	12.2	13.2	11.0	7.9
150	8.6	9.4	9.9	7.5
160	7.4	8.2	8.7	7.3
180	5.5	6.2	6.7	6.5
210		4.0	4.4	4.7
230			3.1	3.5
250				2.4

75,000 lbs swinging counterweight 90° and 38,600 lbs carbody counterweight

**Load capacities in 1000 lbs – 174 ft main boom**

Radius [ft]	Jib length [ft]			
	36	66	85	105
35	33.3			
45	32.7	17.8		
50	32.4	17.7	11.7	
60	31.3	17.4	11.5	8.2
70	28.4	17.2	11.3	8.1
90	19.1	16.5	10.8	7.8
110	13.9	14.4	10.6	7.5
135	9.6	10.5	9.8	7.3
165	6.1	6.9	7.3	7.0
215		3.1	3.5	4.1
235			2.3	2.9
253				2.0

75,000 lbs swinging counterweight 90° and 38,600 lbs carbody counterweight

**Load capacities in 1000 lbs – 194 ft main boom**

Radius [ft]	Jib length [ft]			
	36	46	56	66
35	28.1	22.5		
40	27.9	22.3	17.7	15.1
60	26.9	21.7	17.3	14.9
80	23.5	20.6	17.0	14.6
105	15.7	16.1	16.3	14.4
125	11.4	11.8	12.1	12.0
155	7.1	7.4	7.7	8.0
185	4.2	4.5	4.8	5.0
205	2.8	3.0	3.3	3.5
210		2.7	3.0	3.2
215		2.4	2.6	2.9
220			2.3	2.5

75,000 lbs swinging counterweight 90° and 38,600 lbs carbody counterweight

TLT 11943097 - M236250. Above load charts are for reference only. For actual lift duty please refer to load chart in operator's cabin or manual. Otherwise we recommend you to plan your lifting job using Crane Planner 2.0.

# Load capacities with fixed jib 30°

Load capacities in 1000 lbs – 66 ft main boom

Radius [ft]	Jib length [ft]			
	36	66	85	105
65	33.0			
80	27.9	17.2		
85	25.8	16.8	12.5	
90	23.8	16.4	12.3	8.5
95	22.1	16.2	12.2	8.4
100	20.6	15.7	11.9	8.2
105		15.3	11.7	8.0
125		14.1	10.7	7.5
130		13.9	10.4	7.4
135			10.2	7.3
145			10.0	7.2
165				7.1

75,000 lbs swinging counterweight 90° and 38,600 lbs carbody counterweight

Load capacities in 1000 lbs – 85 ft main boom

Radius [ft]	Jib length [ft]			
	36	66	85	105
60	35.2			
70	32.8	17.7		
75	30.1	17.5		
80	27.6	17.4	12.9	
85	25.4	17.3	12.7	8.8
95	21.7	16.7	12.4	8.5
110	17.6	15.8	11.8	8.1
120		15.0	11.5	7.8
140		12.9	10.5	7.4
145		12.2	10.3	7.4
165			10.0	7.2
185				7.2

75,000 lbs swinging counterweight 90° and 38,600 lbs carbody counterweight

Load capacities in 1000 lbs – 95 ft main boom

Radius [ft]	Jib length [ft]			
	36	66	85	105
55	35.9			
70	32.6	17.7		
75	29.8	17.4	13.0	
85	25.1	17.2	12.7	8.7
95	21.5	16.8	12.3	8.4
105	18.6	16.3	12.1	8.1
115	16.2	15.8	11.7	7.9
125	14.2	15.1	11.4	7.7
135		13.5	11.0	7.5
155		10.6	10.2	7.2
175			8.9	7.1
190				7.1

75,000 lbs swinging counterweight 90° and 38,600 lbs carbody counterweight

Load capacities in 1000 lbs – 105 ft main boom

Radius [ft]	Jib length [ft]			
	36	66	85	105
55	35.7			
65	33.6	18.0		
75	29.6	17.5	13.0	
80	27.1	17.3	12.8	8.8
90	23.0	17.2	12.5	8.6
100	19.8	16.7	12.3	8.3
110	17.1	16.3	12.0	8.1
120	14.9	15.7	11.7	7.8
125	14.0	15.1	11.5	7.8
155		10.5	10.4	7.3
165			9.8	7.2
200				6.9

75,000 lbs swinging counterweight 90° and 38,600 lbs carbody counterweight

Load capacities in 1000 lbs – 125 ft main boom

Radius [ft]	Jib length [ft]			
	36	66	85	105
50	36.4			
65	33.4	18.1		
70	32.1	17.8	13.1	
80	26.7	17.4	12.8	8.8
95	20.9	17.1	12.4	8.5
110	16.7	16.3	12.1	8.2
125	13.6	14.7	11.7	7.9
135	11.9	13.0	11.5	7.7
145	10.4	11.4	11.2	7.5
180		7.3	7.9	7.3
200			6.1	6.6
220				5.1

75,000 lbs swinging counterweight 90° and 38,600 lbs carbody counterweight

Load capacities in 1000 lbs – 144 ft main boom

Radius [ft]	Jib length [ft]			
	36	66	85	105
45	36.3			
60	34.2	18.0		
70	31.5	17.6	12.5	
90	22.1	16.9	12.2	8.4
110	16.2	16.1	11.9	8.1
130	12.2	13.4	11.6	7.7
145	9.9	11.0	11.3	7.5
150	9.3	10.3	10.9	7.5
155	8.6	9.7	10.2	7.4
195		5.6	6.2	6.7
215			4.6	5.1
235				3.7

75,000 lbs swinging counterweight 90° and 38,600 lbs carbody counterweight

Load capacities in 1000 lbs – 164 ft main boom

Radius [ft]	Jib length [ft]			
	36	66	85	105
45	33.1			
60	29.4	17.7		
65	28.3	17.6	11.8	
95	20.0	15.6	11.6	8.1
115	14.7	14.0	11.1	7.9
135	10.9	12.1	10.4	7.6
155	8.2	9.3	9.3	7.4
170	6.6	7.6	8.1	7.1
185	5.2	6.1	6.7	6.8
215		3.7	4.3	4.8
230			3.3	3.8
250				2.5

75,000 lbs swinging counterweight 90° and 38,600 lbs carbody counterweight

Load capacities in 1000 lbs – 174 ft main boom

Radius [ft]	Jib length [ft]			
	36	66	85	105
45	31.2			
55	29.2	17.4		
65	27.2	17.2	11.1	
75	23.9	16.3	11.0	7.9
95	18.2	14.8	11.0	7.8
120	12.4	12.6	10.4	7.6
140	9.2	10.4	9.5	7.4
160	6.8	7.9	8.5	7.1
180	4.9	5.9	6.5	6.7
215		3.2	3.7	4.5
235			2.4	3.2
256				2.0

75,000 lbs swinging counterweight 90° and 38,600 lbs carbody counterweight

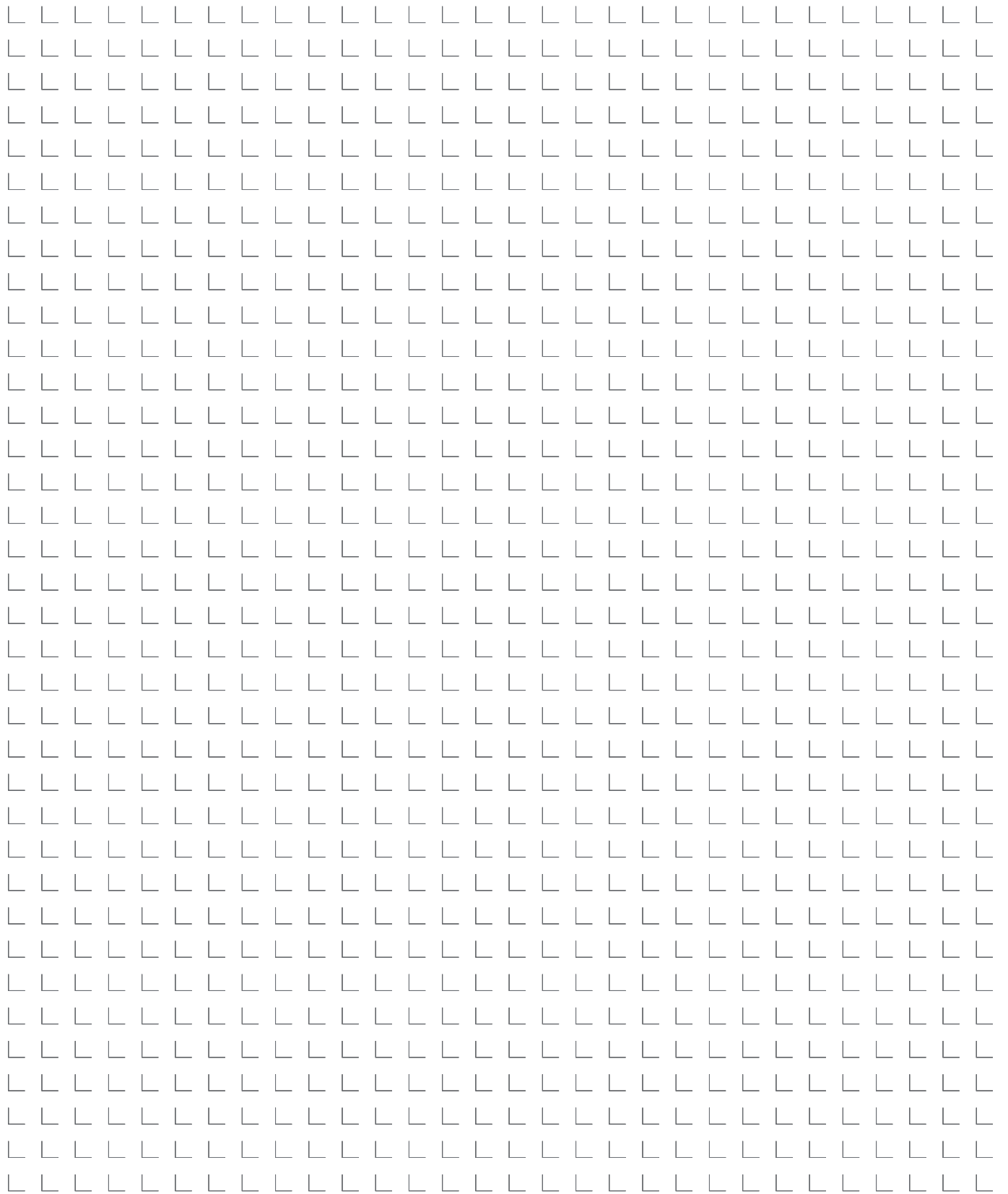
Load capacities in 1000 lbs – 194 ft main boom

Radius [ft]	Jib length [ft]			
	36	46	56	66
40	27.2			
45	27.1	22.0		
50	27.0	22.0	17.6	
60	25.8	21.8	17.6	15.2
80	22.9	20.4	17.5	15.2
110	15.1	15.6	15.3	13.8
130	11.0	11.5	11.9	11.9
155	7.4	7.8	8.2	8.6
180	4.9	5.2	5.6	5.9
210	2.5	2.8	3.2	3.4
220		2.2	2.5	2.7
230				2.1

75,000 lbs swinging counterweight 90° and 38,600 lbs carbody counterweight

TLT 11943097 - M236250. Above load charts are for reference only. For actual lift duty please refer to load chart in operator's cabin or manual. Otherwise we recommend you to plan your lifting job using Crane Planner 2.0.







Download datasheet



Please contact us.

Liebherr-Werk Nenzing GmbH · Dr. Hans Liebherr Str. 1 · 6710 Nenzing, Austria  
Phone +43 50809 41-473 · [crawler.crane@liebherr.com](mailto:crawler.crane@liebherr.com) · [www.liebherr.com](http://www.liebherr.com)  
[facebook.com/LiebherrConstruction](https://facebook.com/LiebherrConstruction)

Liebherr USA, Co. · 7075 Bennington Street · Houston, TX 77028-5812  
Phone (713) 636-4050 · [crawler.cranes.usa@liebherr.com](mailto:crawler.cranes.usa@liebherr.com) · [www.liebherr.com](http://www.liebherr.com)  
[facebook.com/LiebherrConstruction](https://facebook.com/LiebherrConstruction)